

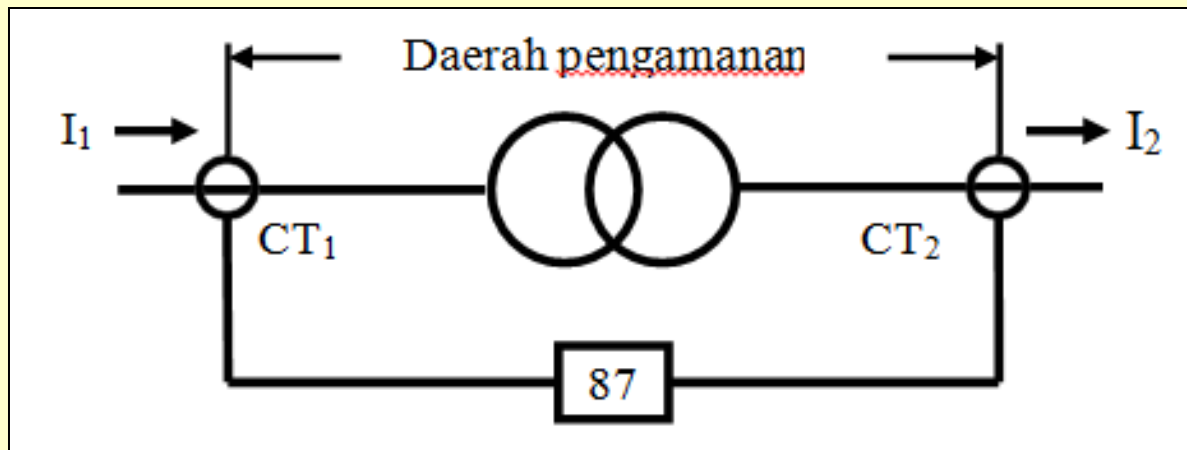
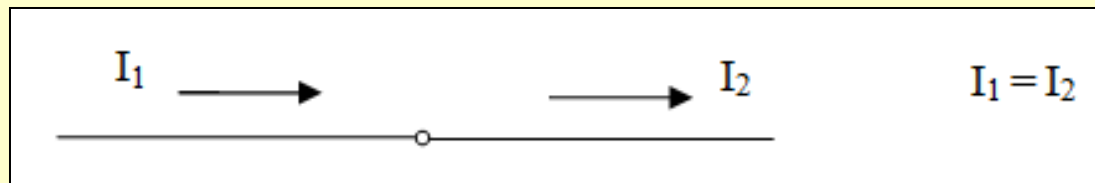
# **RELE DIFERENSIAL**

*Ramadoni Syahputra*

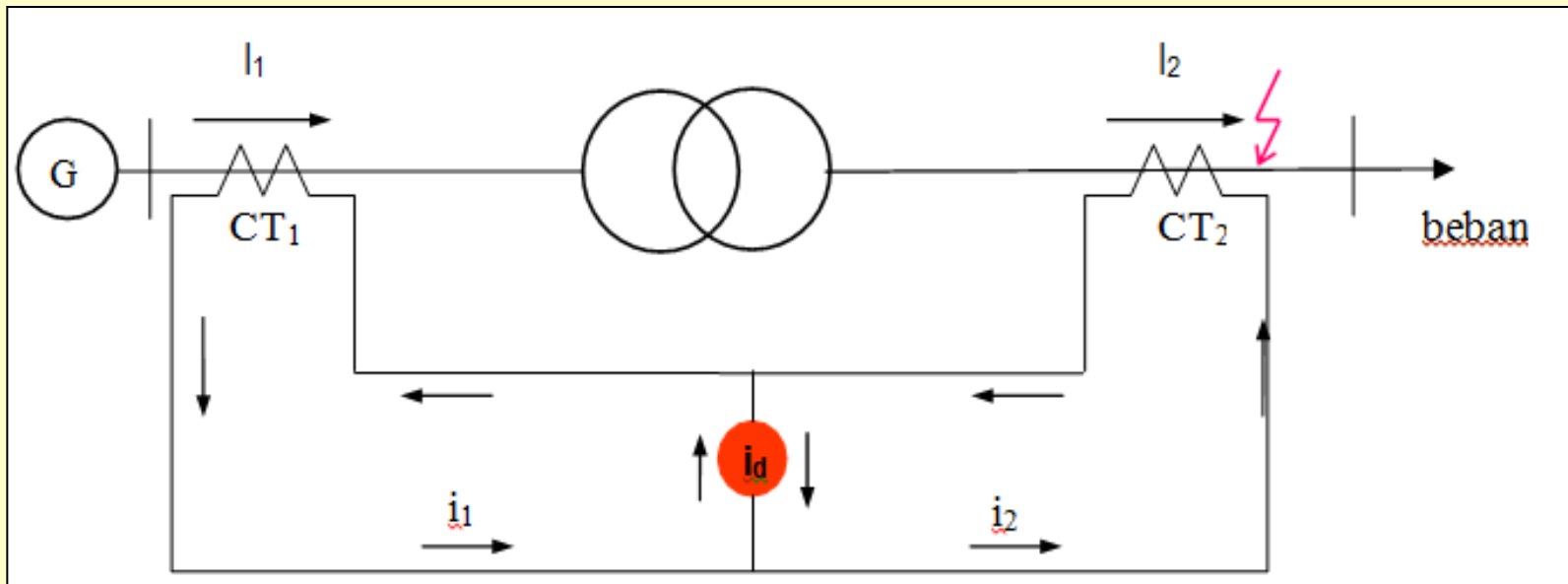
Jurusan Teknik Elektro FT UMY

# Prinsip kerja relay differential

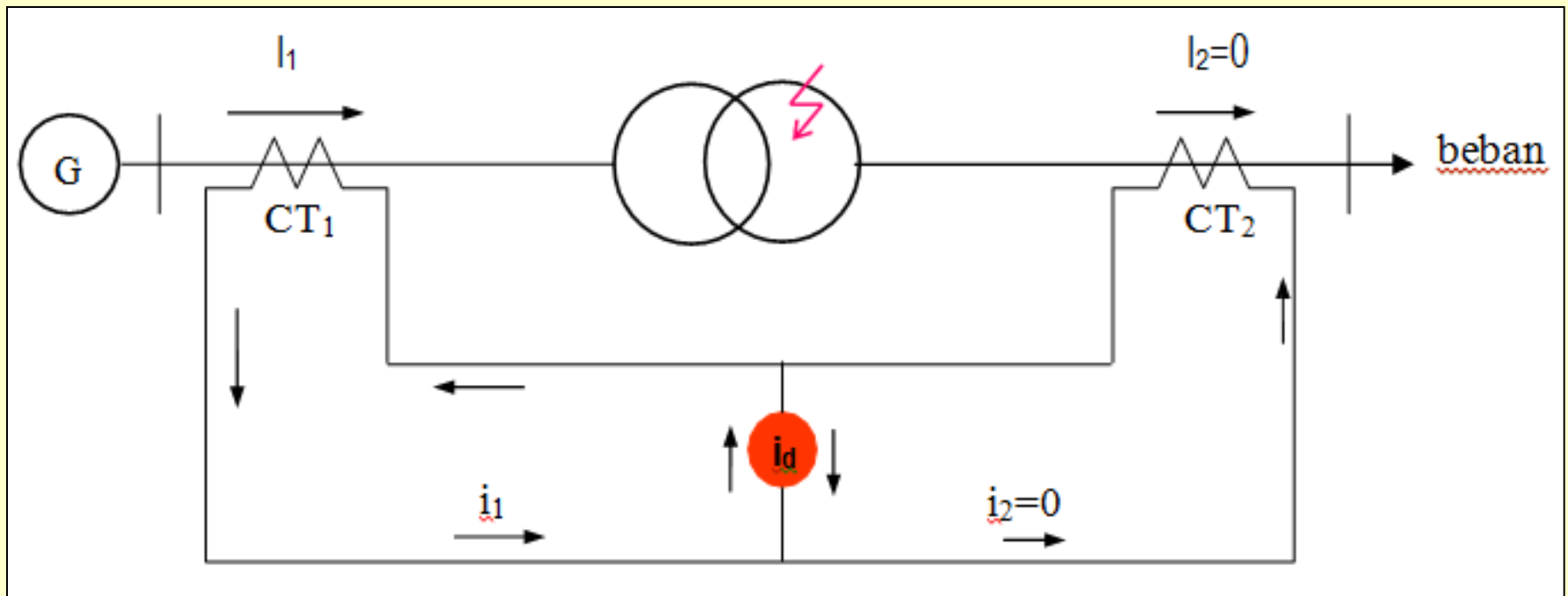
- Relay differential prinsip kerjanya berdasarkan hukum kirchof, dimana arus yang masuk pada suatu titik, sama dengan arus yang keluar dari titik tersebut

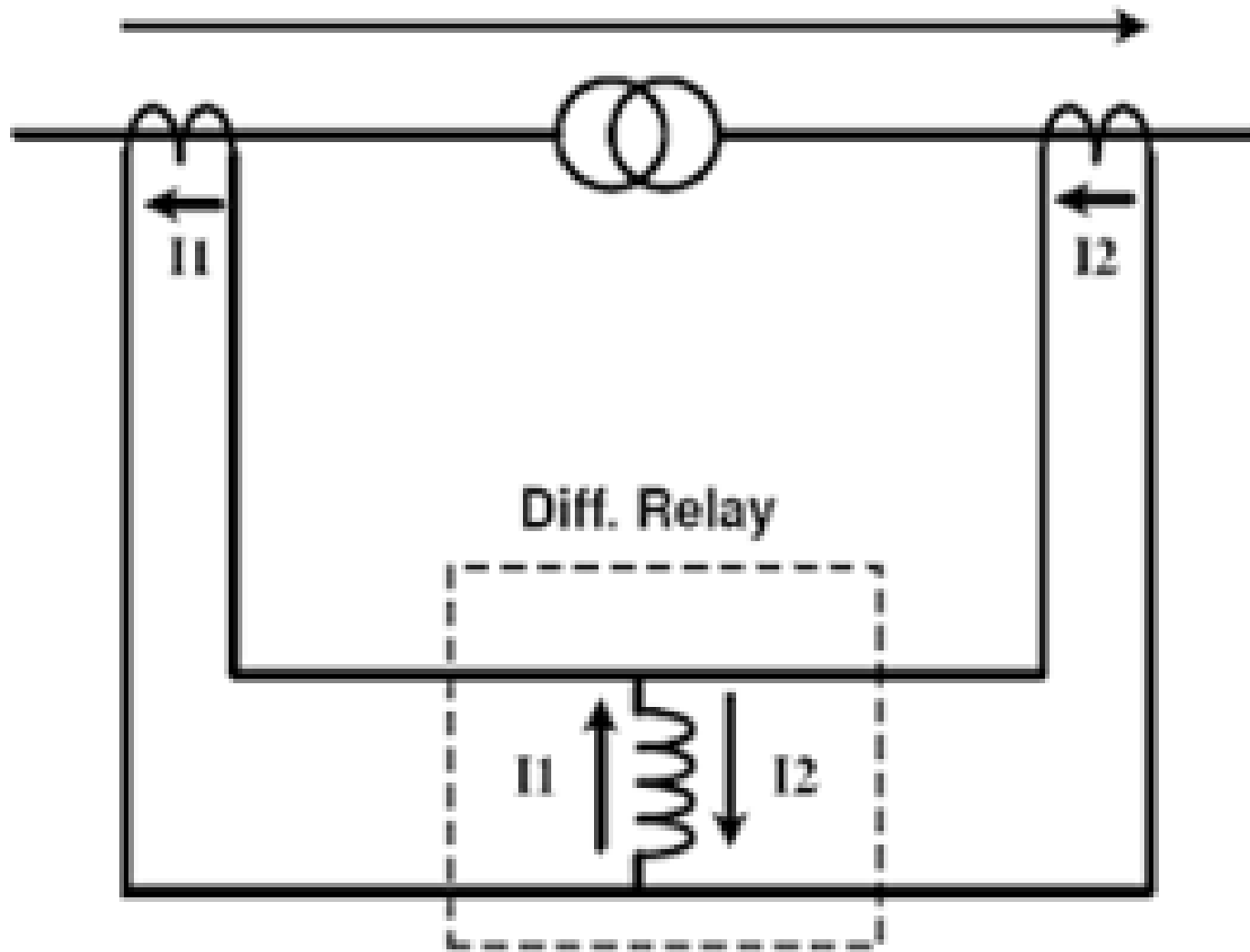


# Gangguan eksternal, rele tidak bekerja

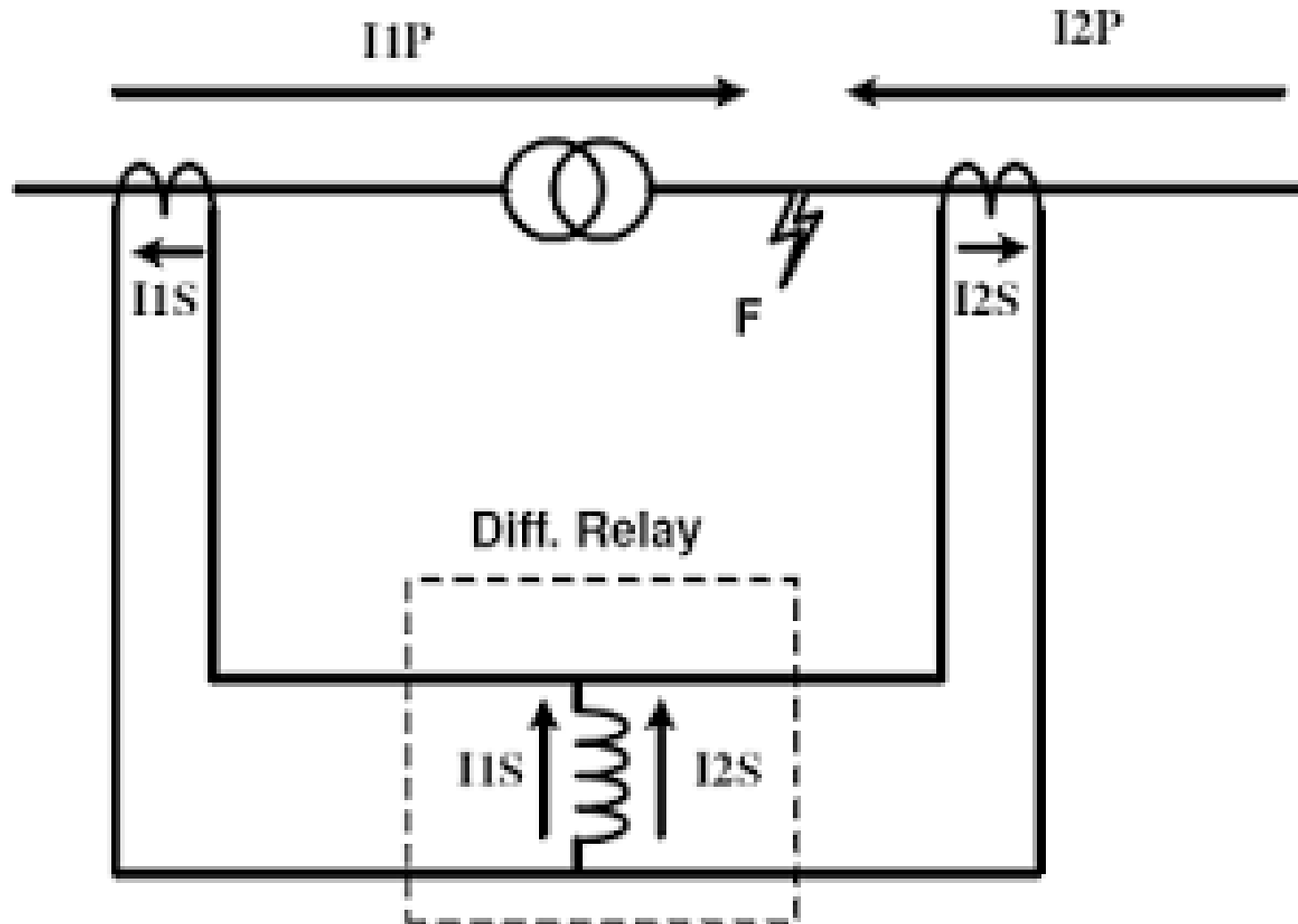


# Gangguan internal, rele bekerja

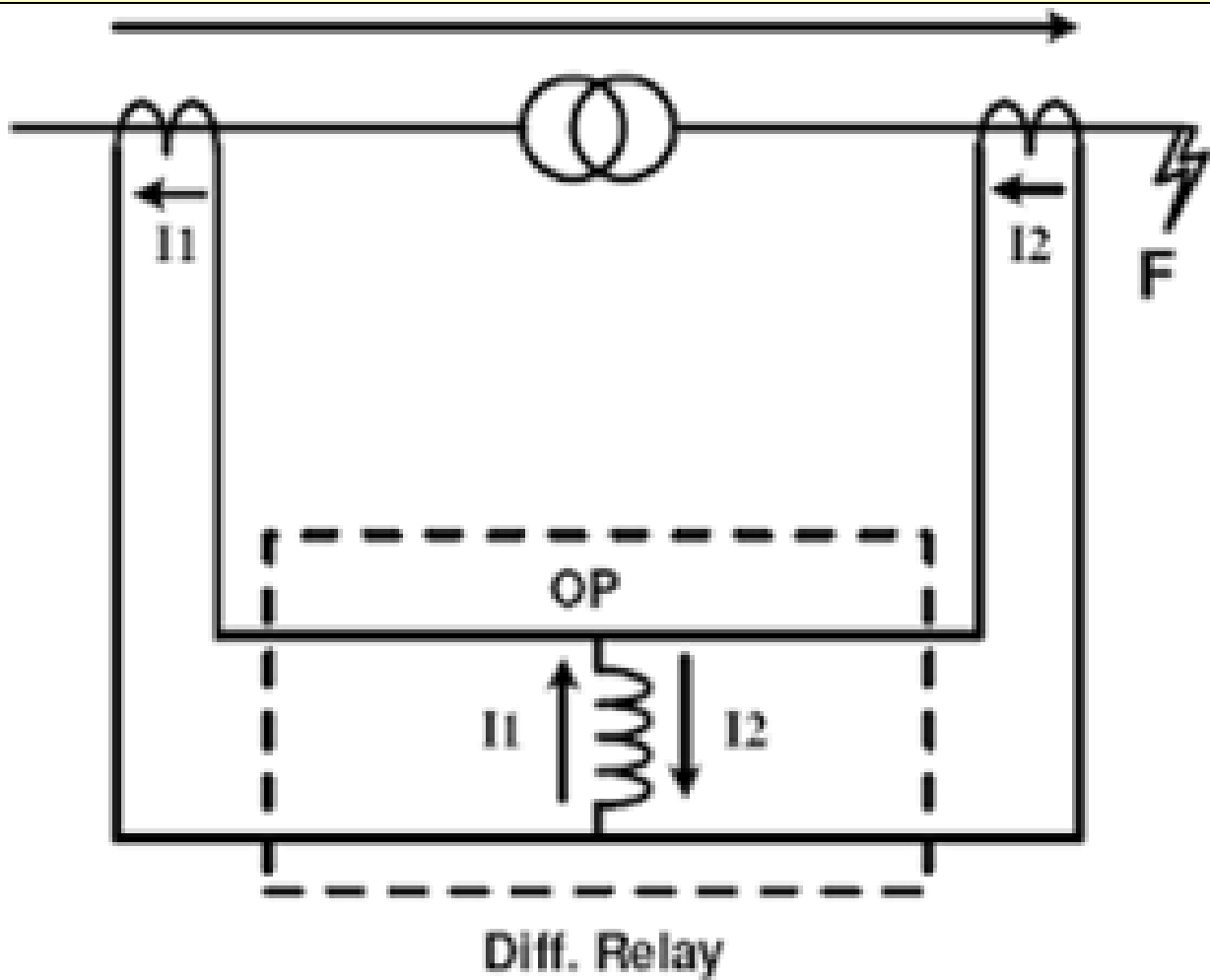




**Differential Relay at Normal Condition**



**Differential Relay With Internal Fault Condition**



**Differential Relay External Fault condition**









# GENERAL ELECTRIC

**DIFFERENTIAL RELAY FOR TRANSFORMER PROTECTION  
WITH PERCENTAGE AND HARMONIC RESTRAINT**

MODEL	1 2BDD15B16A	TYPE	BDD
	5 AMP	60	CYCLES
48-125	D-C CONTROL VOLTS		
PICKUP 0.30 X TAP			
INSTRUCTIONS	GEH-2057	PARTS BULLETIN	

**PHILADELPHIA, PA.**

**MADE IN U.S.A.**

NP-166821

CURRENT TRANSFORMER RATIO MATCHING TAPS  
2.9 3.2 3.5 3.8 4.2 4.6 5.0 8.7



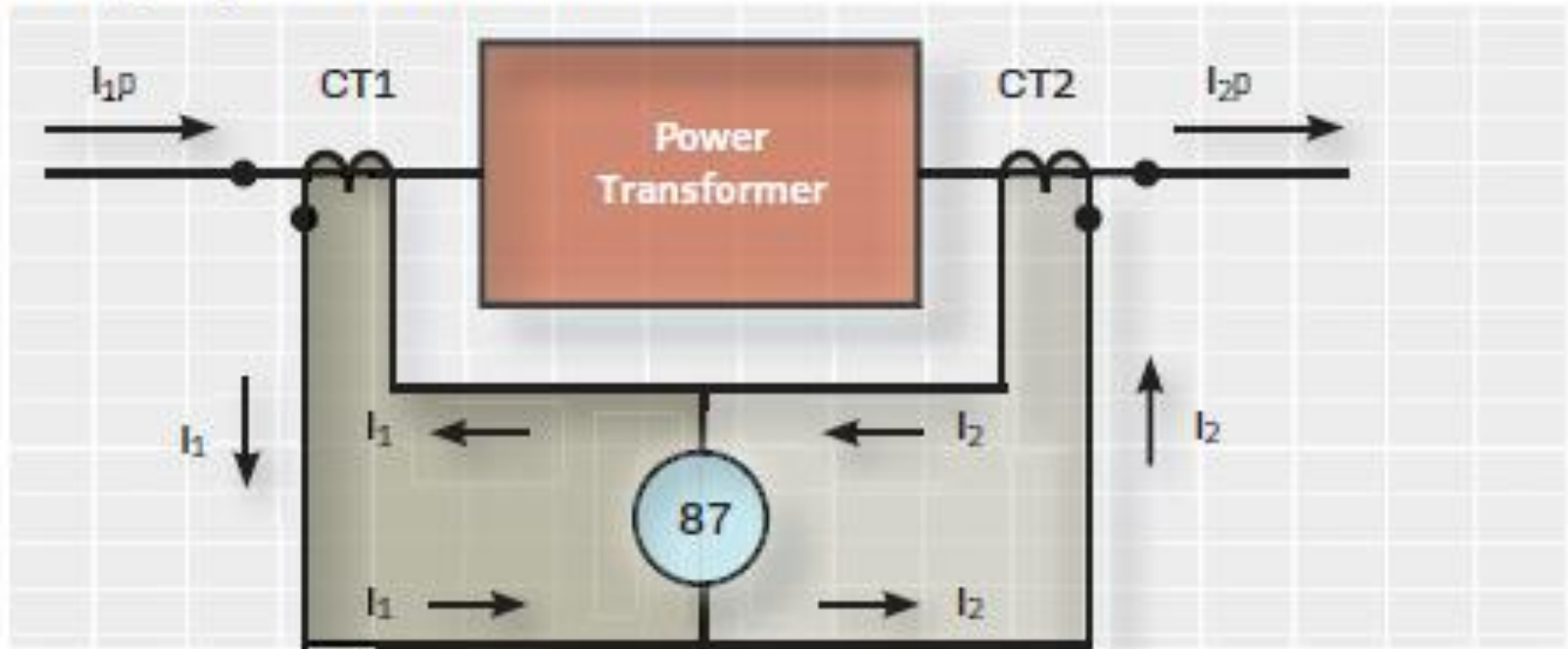
[NASWGR-STORE.COM](http://NASWGR-STORE.COM) 800-909-3660 [SALES@NASWGR.COM](mailto:SALES@NASWGR.COM)



## 4 Operating characteristics of percentage differential relay



### 3 Typical connections of a differential relay applied to a single-phase transformer



# Aplikasi pada trafo



**Terima Kasih**