

# LAMPIRAN

**Tabel hasil perhitungan nilai kekerasan sebelum perendaman**

No Sampel	Aquades				Susu bubuk				Susu cair				Susu kental manis			
	d <sub>1</sub>	d <sub>2</sub>	D	VHN	d <sub>1</sub>	d <sub>2</sub>	D	VHN	d <sub>1</sub>	d <sub>2</sub>	d	VHN	d <sub>1</sub>	d <sub>2</sub>	d	VHN
1	27	31.75	29.375	<b>0.2149</b>	30	28.5	<b>29.25</b>	<b>0.2167</b>	29.5	29.5	<b>29.5</b>	<b>0.2130</b>	27.75	28	<b>27.875</b>	<b>0.2386</b>
2	23	28	25.5	<b>0.2851</b>	27	30	<b>28.5</b>	<b>0.2283</b>	27.5	29.25	<b>28.375</b>	<b>0.2303</b>	26.5	27.25	<b>26.875</b>	<b>0.2567</b>
3	24.5	26	25.25	<b>0.2908</b>	24.5	25.5	<b>25</b>	<b>0.2966</b>	27	27.5	<b>27.5</b>	<b>0.2497</b>	25.5	27.25	<b>26.375</b>	<b>0.2665</b>
4	25	25	25	<b>0.2966</b>	25.25	23.5	<b>24.375</b>	<b>0.3120</b>	26.25	27.5	<b>26.875</b>	<b>0.2567</b>	25.5	26.5	<b>26</b>	<b>0.2743</b>
5	26.5	23	24.75	<b>0.3027</b>	22.5	22	<b>22.25</b>	<b>0.3745</b>	25	25.5	<b>25.25</b>	<b>0.2908</b>	26.75	25	<b>25.875</b>	<b>0.2769</b>
6	23.5	23.5	23.5	<b>0.3357</b>	22	21.5	<b>21.75</b>	<b>0.3919</b>	24.25	19.25	<b>21.75</b>	<b>0.3919</b>	24	27	<b>25.5</b>	<b>0.2851</b>

**Tabel hasil perhitungan nilai kekerasan sesudah perendaman**

No Sampel	Aquadess				Susu bubuk				Susu cair				Susu kental manis			
	d <sub>1</sub>	d <sub>2</sub>	D	VHN	d <sub>1</sub>	d <sub>2</sub>	D	VHN	d <sub>1</sub>	d <sub>2</sub>	d	VHN	d <sub>1</sub>	d <sub>2</sub>	D	VHN
1	26.5	25	25.75	<b>0.2796</b>	28.5	27	<b>27.75</b>	<b>0.2408</b>	22.25	23.25	<b>22.75</b>	<b>0.3582</b>	36	34	<b>35</b>	<b>0.1513</b>
2	25	25.5	25.25	<b>0.2908</b>	26	26	<b>26</b>	<b>0.2743</b>	21.5	24	<b>22.75</b>	<b>0.3583</b>	28	28.75	<b>28.375</b>	<b>0.2293</b>
3	23.5	26.5	25	<b>0.2966</b>	22.25	24.5	<b>23.375</b>	<b>0.3375</b>	18.25	20.25	<b>19.25</b>	<b>0.5003</b>	31.75	27.5	<b>29.625</b>	<b>0.2112</b>
4	26.5	24.25	25.375	<b>0.2897</b>	25.25	20.75	<b>23</b>	<b>0.3505</b>	20	20.5	<b>20.25</b>	<b>0.3505</b>	34	33.5	<b>33.75</b>	<b>0.1622</b>
5	25.75	29	27.375	<b>0.2474</b>	21	21.25	<b>21.125</b>	<b>0.4154</b>	18.5	19.75	<b>19.125</b>	<b>0.5069</b>	37.75	38.25	<b>38</b>	<b>0.1284</b>
6	22.25	22.75	22.5	<b>0.3662</b>	20	19.5	<b>19.75</b>	<b>0.4753</b>	18.75	16	<b>17.375</b>	<b>0.6141</b>	34.25	42.5	<b>38.375</b>	<b>0.1255</b>

### Rerata hasil perendaman (VHN)

	Susu bubuk	Susu cair (UHT)	Susu kental manis	Aquades
Sebelum	0,3033	0,2721	0,2664	0,2876
Sesudah	0,3302	0,4725	0,1680	0,2948
Selisih	0,0269	0,2005	-0,0983	0,0071

### Explore sampel

#### Case Processing Summary

sampel		Cases					
		Valid		Missing		Total	
		N	Percent	N	Percent	N	Percent
sebelum	Susu cair	6	100.0%	0	.0%	6	100.0%
	Susu bubuk	6	100.0%	0	.0%	6	100.0%
	Susu kental manis	6	100.0%	0	.0%	6	100.0%
	Aquades	6	100.0%	0	.0%	6	100.0%
sesudah	Susu cair	6	100.0%	0	.0%	6	100.0%
	Susu bubuk	6	100.0%	0	.0%	6	100.0%
	Susu kental manis	6	100.0%	0	.0%	6	100.0%
	Aquades	6	100.0%	0	.0%	6	100.0%

**Descriptives**

1			2	3	
sampel			Statistic	Std. Error	
sebelum	Susu cair	Mean	.2723	.02617	
		95% Confidence Interval for Mean	Lower Bound	.2051	
			Upper Bound	.3396	
		5% Trimmed Mean	.2689		
		Median	.2536		
		Variance	.004		
		Std. Deviation	.06410		
		Minimum	.21		
		Maximum	.39		
		Range	.18		
		Interquartile Range	.09		
		Skewness	1.626	.845	
		Kurtosis	2.859	1.741	
		Susu bubuk	Mean	.3033	.02953
95% Confidence Interval for Mean	Lower Bound		.2274		
	Upper Bound		.3792		
5% Trimmed Mean	.3032				
Median	.3043				
Variance	.005				
Std. Deviation	.07234				
Minimum	.22				

1		2	3
	Maximum	.39	
	Range	.18	
	Interquartile Range	.15	
	Skewness	-.014	.845
	Kurtosis	-1.771	1.741
Susu kental manis	Mean	.2661	.00686
	95% Confidence Interval for Mean		
	Lower Bound	.2485	
	Upper Bound	.2838	
	5% Trimmed Mean	.2666	
	Median	.2699	
	Variance	.000	
	Std. Deviation	.01680	
	Minimum	.24	
	Maximum	.29	
	Range	.05	
	Interquartile Range	.03	
	Skewness	-.882	.845
	Kurtosis	.448	1.741
Aquades	Mean	.2876	.01625
	95% Confidence Interval for Mean		
	Lower Bound	.2459	
	Upper Bound	.3294	
	5% Trimmed Mean	.2890	
	Median	.2937	

		1	2	3
		Variance	.002	
		Std. Deviation	.03981	
		Minimum	.21	
		Maximum	.34	
		Range	.12	
		Interquartile Range	.04	
		Skewness	-1.282	.845
		Kurtosis	3.053	1.741
sesudah	Susu cair	Mean	.4642	.04029
		95% Confidence Interval for Mean		
		Lower Bound	.3606	
		Upper Bound	.5678	
		5% Trimmed Mean	.4618	
		Median	.4748	
		Variance	.010	
		Std. Deviation	.09869	
		Minimum	.36	
		Maximum	.61	
		Range	.26	
		Interquartile Range	.18	
		Skewness	.326	.845
		Kurtosis	-.554	1.741
	Susu bubuk	Mean	.3490	.03549
		95% Confidence Interval for Mean		
		Lower Bound	.2577	
		Upper Bound	.4402	

1		2	3
	5% Trimmed Mean	.3480	
	Median	.3440	
	Variance	.008	
	Std. Deviation	.08693	
	Minimum	.24	
	Maximum	.48	
	Range	.23	
	Interquartile Range	.16	
	Skewness	.286	.845
	Kurtosis	-.829	1.741
Susu kental manis	Mean	.1680	.01762
	95% Confidence Interval for Mean		
	Lower Bound	.1227	
	Upper Bound	.2133	
	5% Trimmed Mean	.1669	
	Median	.1568	
	Variance	.002	
	Std. Deviation	.04315	
	Minimum	.13	
	Maximum	.23	
	Range	.10	
	Interquartile Range	.09	
	Skewness	.626	.845
	Kurtosis	-1.523	1.741
Aquades	Mean	.2948	.01596



1		2	3
95% Confidence Interval for Mean	Lower Bound	.2537	
	Upper Bound	.3358	
5% Trimmed Mean		.2934	
Median		.2894	
Variance		.002	
Std. Deviation		.03910	
Minimum		.25	
Maximum		.37	
Range		.12	
Interquartile Range		.04	
Skewness		1.279	.845
Kurtosis		3.081	1.741

### Tests of Normality

	Kolmogorov-Smirnov <sup>a</sup>			Shapiro-Wilk		
	Statistic	df	Sig.	Statistic	df	Sig.
sebelum perendaman dengan susu bubuk	,184	6	,200*	,919	6	,497
sesudah perendaman dengan susu bubuk	,160	6	,200*	,971	6	,899
sebelum perendaman dengan susu kental manis	,183	6	,200*	,946	6	,710
sesudah perendaman dengan susu kental manis	,220	6	,200*	,888	6	,309
sebelum perendaman dengan susu cair	,261	6	,200*	,851	6	,159
sesudah perendaman dengan susu cair	,192	6	,200*	,923	6	,527
sebelum perendaman dengan aquades	,308	6	,078	,872	6	,234
sesudah perendaman dengan aquades	,314	6	,064	,867	6	,215

\*. This is a lower bound of the true significance.

a. Lilliefors Significance Correction

### Paired Samples Test

		Paired Differences					t	df	Sig. (2-tailed)
		Mean	Std. Deviation	Std. Error Mean	95% Confidence Interval of the Difference				
					Lower	Upper			
Pair 1	sebelum perendaman dengan susu bubuk - sesudah perendaman dengan susu bubuk	-,0456333	,0199290	,0081360	-,0665476	-,0247191	-5,609	5	,002
Pair 2	sebelum perendaman dengan susu kental manis - sesudah perendaman dengan susu kental manis	,0983667	,0518940	,0211857	,0439072	,1528261	4,643	5	,006
Pair 3	sebelum perendaman dengan susu cair - sesudah perendaman dengan susu cair	-,1921167	,0479027	,0195562	-,2423874	-,1418459	-9,824	5	,000
Pair 4	sebelum perendaman dengan aquades - sesudah perendaman dengan aquades	-,0071167	,0400309	,0163426	-,0491265	,0348932	-,435	5	,681

### Test of Homogeneity of Variances

Perubahan tingkat kekerasan email

Levene Statistic	df1	df2	Sig.
1,891	3	20	,164

### Tests of Normality

Perlakuan	Perlakuan	Kolmogorov-Smirnov <sup>a</sup>			Shapiro-Wilk		
		Statistic	df	Sig.	Statistic	df	Sig.
Perubahan tingkat kekerasan email	susu bubuk	,326	6	,046	,816	6	,081
	susu kental manis	,166	6	,200*	,954	6	,774
	susu cair	,192	6	,200*	,939	6	,651
	aquades	,180	6	,200*	,970	6	,894

\*. This is a lower bound of the true significance.

a. Lilliefors Significance Correction

### ANOVA

Perubahan tingkat kekerasan email

	Sum of Squares	Df	Mean Square	F	Sig.
Between Groups	,260	3	,087	49,621	,000
Within Groups	,035	20	,002		
Total	,295	23			

## Post Hoc Tests

### Multiple Comparisons

Dependent Variable: Perubahan tingkat kekerasan email

LSD

(I) Perlakuan	(J) Perlakuan	Mean Difference (I-J)	Std. Error	Sig.	95% Confidence Interval	
					Lower Bound	Upper Bound
susu bubuk	susu kental manis	,1439833*	,0241349	,000	,093639	,194328
	susu cair	-,1465167*	,0241349	,000	-,196861	-,096172
	aquades	,0384833	,0241349	,127	-,011861	,088828
susu kental manis	susu bubuk	-,1439833*	,0241349	,000	-,194328	-,093639
	susu cair	-,2905000*	,0241349	,000	-,340844	-,240156
	aquades	-,1055000*	,0241349	,000	-,155844	-,055156
susu cair	susu bubuk	,1465167*	,0241349	,000	,096172	,196861
	susu kental manis	,2905000*	,0241349	,000	,240156	,340844
	aquades	,1850000*	,0241349	,000	,134656	,235344
aquades	susu bubuk	-,0384833	,0241349	,127	-,088828	,011861
	susu kental manis	,1055000*	,0241349	,000	,055156	,155844
	susu cair	-,1850000*	,0241349	,000	-,235344	-,134656

\*. The mean difference is significant at the .05 level.

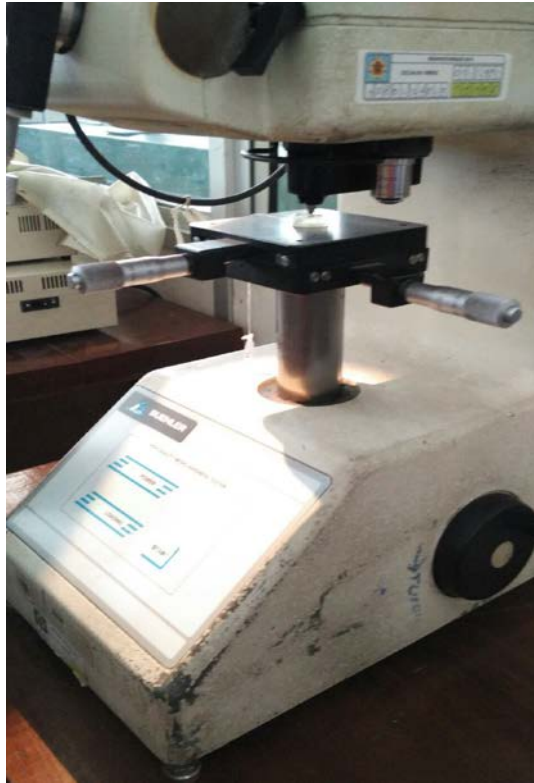
**Multiple Comparisons**

**LSD**

Dependent Variable	(I) sampel	(J) sampel	Mean Difference (I-J)	Std. Error	Sig.	95% Confidence Interval	
						Lower Bound	Upper Bound
sebelum	Susu cair	Susu bubuk	-.03100	.03056	.323	-.0948	.0328
		Susu kental manis	.00622	.03056	.841	-.0575	.0700
		Aquades	-.01530	.03056	.622	-.0791	.0485
	Susu bubuk	Susu cair	.03100	.03056	.323	-.0328	.0948
		Susu kental manis	.03722	.03056	.237	-.0265	.1010
		Aquades	.01570	.03056	.613	-.0481	.0795
	Susu kental manis	Susu cair	-.00622	.03056	.841	-.0700	.0575
		Susu bubuk	-.03722	.03056	.237	-.1010	.0265
		Aquades	-.02152	.03056	.490	-.0853	.0422
	Aquades	Susu cair	.01530	.03056	.622	-.0485	.0791
		Susu bubuk	-.01570	.03056	.613	-.0795	.0481
		Susu kental manis	.02152	.03056	.490	-.0422	.0853
sesudah	Susu cair	Susu bubuk	.11522	.04152	.012	.0286	.2018
		Susu kental manis	.29620	.04152	.000	.2096	.3828
		Aquades	.16943	.04152	.001	.0828	.2560
	Susu bubuk	Susu cair	-.11522	.04152	.012	-.2018	-.0286
		Susu kental manis	.18098	.04152	.000	.0944	.2676
		Aquades	.05422	.04152	.206	-.0324	.1408
	Susu kental manis	Susu cair	-.29620	.04152	.000	-.3828	-.2096
		Susu bubuk	-.18098	.04152	.000	-.2676	-.0944
		Aquades	-.12677	.04152	.006	-.2134	-.0402
	Aquades	Susu cair	-.16943	.04152	.001	-.2560	-.0828
		Susu bubuk	-.05422	.04152	.206	-.1408	.0324
		Susu kental manis	.12677	.04152	.006	.0402	.2134

\*. The mean difference is significance the 0.05 level

## Dokumentasi Penelitian



Alat pengukur kekerasan (*Micro Vickers Hardness Tester Machine*)



Sampel gigi desidui pada media tanam sebelum diberi resin



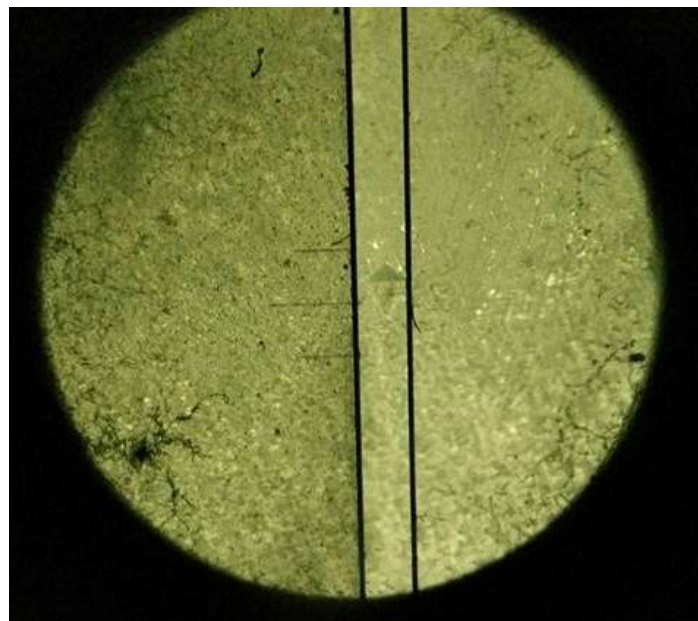
Sampel gigi desidui yang telah diberi resin dan siap untuk diuji



Jenis sediaan susu yang digunakan



Sampel gigi yang direndam dengan susu



Tampak penampang kekerasan email gigi



