

LAMPIRAN

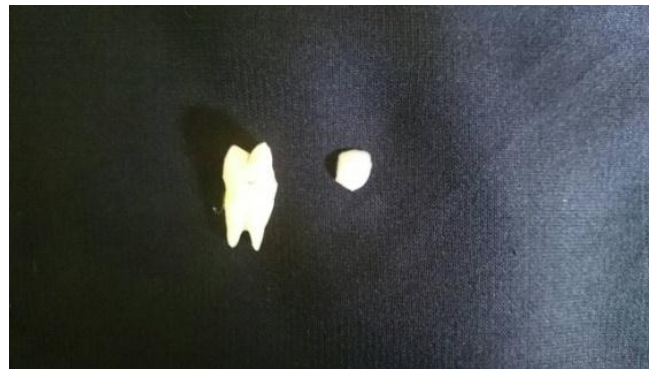
ALAT DAN BAHAN PENELITIAN



Semen ionomer kaca tipe 1 Tipe 1



Self adhesif semen Rely X U200



Gigi Premolar



Universal Testing Machine



Komposit Nano hybrid (duo Ceramic)

HASIL UJI TARIK DI *UNIVERSAL TESTING MACHINE*

Jenis Bahan Sementasi	Hasil Uji Tarik (N)
<i>Self adhesif semen</i>	129,4
	164,2
	164,2
	170,2
	188,1
	135,4
Semen ionomer kaca tipe 1 Tipe 1	88,9
	92,4
	101,5
	104,8
	86,6
	85,0