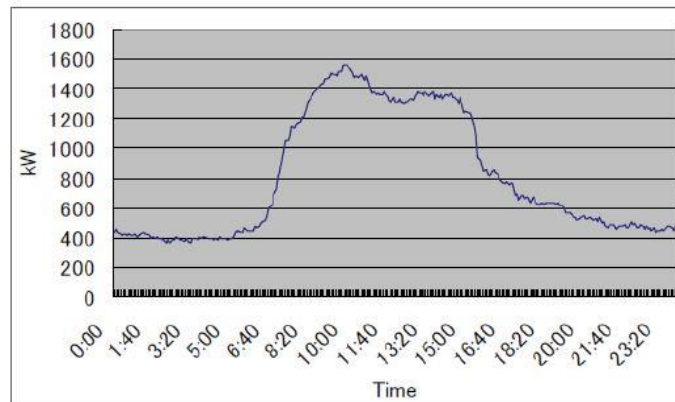


## Profile beban energi listrik pada Rumah Sakit



Data diatas didapat dari buku perencanaan efisiensi dan elastisitas energi 2012 oleh badan pengkajian dan penerapan teknologi. Kemudian dijadikan dasar sebagai penentuan kapasitas cooling load rumah sakit dalam persentase pada obyek perancangan rumah sakit Priscilla. Berikut tabel persentase tersebut :

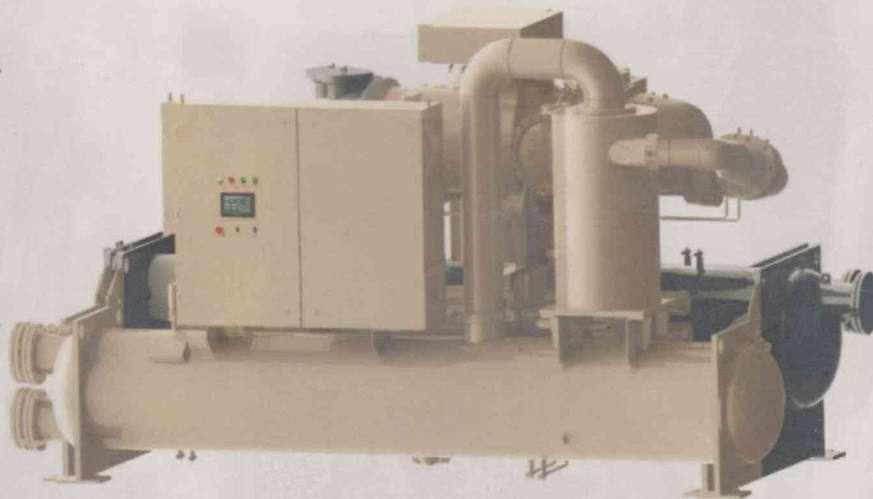
Waktu	Profile beban energi listrik Rumah Sakit (Kw)	KCLRS (%)
00:00-01:00	420	28
01:00-02:00	410	27
02:00-03:00	395	26
03:00-04:00	390	26
04:00-05:00	400	27
05:00-06:00	420	28
06:00-07:00	585	39
07:00-08:00	900	60
08:00-09:00	1285	86
09:00-10:00	1315	88
10:00-11:00	1500	100
11:00-12:00	1350	90
12:00-13:00	1300	87
13:00-14:00	1380	92
14:00-15:00	1375	92
15:00-16:00	1200	80
16:00-17:00	880	59
17:00-18:00	700	47
18:00-19:00	650	43
19:00-20:00	580	39
20:00-21:00	565	38
21:00-22:00	495	33
22:00-23:00	450	30
23:00-00:00	428	29

\*Tulisan berwarna merah adalah beban puncak penggunaan energi listrik

PM-ZUW FF-CAT-A



# Water Cooled Single Screw Chiller with Falling Film Evaporator ZUWY4H~6Q Power supply:380V/400V/50Hz/3



ISO9001 2008  
ISO14001 2004  
OHSAS18001 1999



CNAB002-Q  
CNAB002-E



Product Safety  
Certification



Engineered for flexibility and performance.™

# Technical Data

22 0/04

Model		ZUWY 5L2KF JKE2 FBL2 N	ZUWY 5L2KF JDE3 FBL2 N	ZUWY 5L2KF JEE3 FBL2 N	ZUWY 5L2KF JDE3 FFL2 N	ZUWY 5L2KF KEE3 GDL2 N	ZUWY 5L2KF KEE3 KBL2 N	ZUWY 5L2KF KFE3 KCL2 N	ZUWY 5M2LF JKE2 FCL2 N	ZUWY 5M2LF JDE3 FCL2 N	ZUWY 5M2LF KEE3 GEL2 N	ZUWY 5M2LF JEE3 FDL2 N	ZUWY 5M2LF JDE3 FFL2 N	ZUWY 5M2LF KEE3 KCL2 N	
Cooling Capacity	U.S.RT	277	298	301	298	304	304	305	294	317	324	321	317	324	
	kW	973	1047.1	1058.7	1047.9	1067.7	1068.2	1071	1032.3	1114.9	1138.8	1128.4	1115.9	1140.1	
Power Input	KW	178	179.3	179.5	175.4	175.6	172.6	171.8	190	192.4	189.5	192.1	189.7	186.1	
COP		5.47	5.84	5.9	5.98	6.08	6.19	6.23	5.43	5.8	6.01	5.88	5.88	6.13	
IPLV		6.39	6.76	6.82	6.84	6.94	7	7.03	6.02	6.35	6.5	6.42	6.4	6.56	
Evap. Flow Rate	l/s	41.9	45.1	45.6	45.1	46	46	46.1	44.4	48	49	48.6	48	49.1	
Evap. Pressure Drop	kPa	35.9	62.5	45	62.6	50.8	50.8	39.7	40	69.8	56.9	50.4	69.9	57	
Cond. Flow Rate	l/s	52.4	56.4	57	56.4	57.5	57.5	57.6	55.6	60	61.3	60.7	60.1	61.4	
Cond. Pressure Drop	kPa	58.7	66.5	67.8	43.7	60.9	34.7	28.6	59.4	67.6	63.3	60.2	48.6	31.7	
Compressor	Type	Semi-hermetic Single Screw Compressor													
Starter Type		Y-Δ													
Refrigerant	Type	R134a													
	Charge kg	275	275	275	275	300	325	325	275	275	300	275	275	325	
Oil	Brand	Oil B													
Temp. Control		Evaporator leaving water temperature PID													
Evap. Water Pipe	mm	φ219	φ219	φ219	φ219	φ219	φ219	φ219	φ219	φ219	φ219	φ219	φ219	φ219	
Cond. Water Pipe	mm	φ219	φ219	φ219	φ219	φ219	φ219	φ219	φ219	φ219	φ219	φ219	φ219	φ219	
Thermal Insulation Material		Polyurethane insulation													
Chiller Weight	kg	5050	5206	5271	5294	5512	6084	6214	5075	5253	5540	5309	5316	6143	
Operation Weight	kg	5580	5736	5801	5824	6099	6671	6801	5605	5840	6127	5839	5903	6730	
Rated Load Amps	A	304.9	306.9	307.2	300.7	301.1	296.3	295	333.3	337.1	332.5	336.6	332.9	327.2	
Compressor Inrush	A	770.7	770.7	770.7	770.7	770.7	770.7	770.7	882.3	882.3	882.3	882.3	882.3	882.3	
Max Inrush Amps	A	770.7	770.7	770.7	770.7	770.7	770.7	770.7	882.3	882.3	882.3	882.3	882.3	882.3	
Dimension L*W*H	mm	3597* 1758* 2346	3623*1758*2346			3912* 1703* 2346	3870*1758*2408			3597* 1758* 2346	3623* 1758* 2346	3912* 1703* 2346	3623*1758*2346		3870* 1758* 2408

**Noted:**

- Above chiller cooling capacity is based on AHRI condition:  
Chilled water outlet temperature 6.7°C, Chilled water flow rate 0.155 m<sup>3</sup> / (h. kW);  
Cooling water inlet temperature 29.4 °C. Cooling water flow rate 0.194 m<sup>3</sup> / (h. kW);  
Evaporator-side water fouling factor: 0.018 m<sup>2</sup> °C / kW, condenser-side water fouling factor: 0.044 m<sup>2</sup> °C / kW.
- Power supply: 380V/50Hz/3
- The application code:  
N – Conventional, P – Part of heat recovery, B – Hot gas bypass.  
The unit application code above is N, has been omitted.
- Evaporator is 3 pass, condenser is 2 pass. The code has been omitted.
- Parameters of other units, please contact the Daikin local sales organization.
- References technical data: Z9690701





PT DAIKIN APPLIED SOLUTIONS INDONESIA

PCXCMT1601B

- Wall mounted
- Ceiling cassette
- Ceiling convertible
- Ducted

# Chilled Water Fan Coil Unit Product Catalogue



[50Hz] 220-240V, 380-415V

## Specification for wall mounted

Indoor model name		FWW02L	FWW03L	FWW04L	FWW05L	FWW06L
Nominal cooling capacity	Btu/hr	8300	9200	11300	15500	18000
	W	2430	2700	3310	4540	5280
Nominal sensible cooling capacity	Btu/hr	6300	6900	9000	11700	14000
	W	1850	2020	2640	3430	4100
Nominal heating capacity (entering water temperature: 50°C)	Btu/hr	11000	12000	15000	20500	25000
	W	3220	3520	4400	6010	7330
Nominal total input power	W	31	32	42	53	72
Nominal running current	A	0.19	0.20	0.21	0.29	0.34
Power source	V/Ph/Hz	220-240 / 1 / 50				
Control	Air discharge	Automatic louver (up & down)				
	Operation	LCD wireless micro-computer remote control				
Airflow (H/M/L/Q)	CFM	260 / 230 / 200 / 180	280 / 250 / 220 / 190	370 / 320 / 260 / 240	510 / 450 / 390 / 360	620 / 520 / 460 / 440
Nominal water flow rate	USGPM	1.85	2.03	2.51	3.43	4.01
	liters/min	7.00	7.68	9.50	13.00	15.18
Head loss (Cooling)	kPa	34	24	31	30	36
Head loss (Heating): 50°C	kPa	29	20	25	27	33
Max. working pressure	kPa	1608				
Surface air velocity	m/s	0.68	0.74	0.97	0.83	1.01
Sound pressure level (H/M/L/Q)	dB(A)	34 / 29 / 25 / 24	35 / 30 / 25 / 24	42 / 39 / 32 / 29	42 / 38 / 34 / 32	46 / 42 / 39 / 37
Unit dimension (HxWxD)	mm	288 x 800 x 206			310 x 1065 x 224	
Packing dimension (HxWxD)	mm	344 x 874 x 274			386 x 1136 x 314	
Unit weight	kg	9			14	
Condensate drain size	mm	19.05				
Pipe connection	mm	12.70 BSP female thread adaptor				
Fan	Type	Cross flow fan				
	Drive	Direct				
Fan speed (H/M/L)	RPM	1030 / 890 / 760	1050 / 910 / 780	1310 / 1150 / 955	1035 / 920 / 825	1250 / 1070 / 970
Fan motor	Type	Single phase SCR				
	Index of Protection (IP)	IP20			IP44	
Insulation grade		E				
Rated input power	W	31 / 29 / 25	32 / 31 / 29	42 / 37 / 33	53 / 47 / 42	72 / 68 / 60
Rated running current	A	0.19 / 0.18 / 0.17	0.20 / 0.20 / 0.19	0.21 / 0.20 / 0.19	0.29 / 0.26 / 0.25	0.34 / 0.32 / 0.31
Starting current	A	0.40	0.40	0.40	0.30	0.43
Motor output	W	18	18	18	26	30
Poles		4				
Coil	Tube	Material	Copper			
		Diameter (mm)	7.00			
	Fin	Material	Aluminium			
		Face area (m <sup>2</sup> )	0.18		0.29	
Water volume	liter	0.52	0.58	0.58	0.95	0.95
Air quality	Filter type	Washable saranet filter				
	Filter quantity	2				
Casing	Colour	White				

Mode	Cooling	Heating
Entering air temperature	27°C DB / 19°C WB	20°C DB
Entering water temperature	7°C	50°C (2-pipe system)
Leaving water temperature	12°C	

All specifications are subjected to change by the manufacturer without prior notice.

# Ceiling Cassette 3x3 (50Hz)

## Specification for ceiling cassette (2-pipe system)

Indoor model name			FWK06E	FWK08E	FWK09E	FWK11E	FWK13E
Nominal cooling capacity	Btu/hr		21000	25000	30000	38000	43000
	W		6150	7330	8790	11140	12600
Nominal sensible cooling capacity	Btu/hr		16700	19200	22300	27400	31000
	W		4890	5630	6540	8030	9090
Nominal heating capacity (entering water temperature: 50°C)	Btu/hr		28000	33600	38300	45500	52000
	W		8210	9850	11230	13340	15240
Nominal total input power	W		95	126	167	186	227
Nominal running current	A		0.44	0.55	0.74	0.85	1.03
Power source	V/Ph/Hz		220-240 / 1 / 50				
Control	Air discharge		4-way automatic louver (up & down)				
	Operation		LCD wireless micro-computer remote control				
Airflow (H/M/L/Q)	CFM		750 / 620 / 480 / 320	860 / 700 / 540 / 380	890 / 720 / 570 / 420	1000 / 840 / 680 / 540	1140 / 1000 / 840 / 700
Nominal water flow rate	USGPM		4.71	5.59	6.69	8.45	9.60
	liters/min		17.83	21.17	25.29	31.94	36.29
Head loss (Cooling)	kPa		20	37	22	44	53
Head loss (Heating): 50°C	kPa		19	33	19	38	47
Max. working pressure	kPa		1608				
Surface air velocity	m/s		0.92	1.05	1.13	1.02	1.17
Sound pressure level (H/M/L/Q)	dBA		42 / 38 / 32 / 23	46 / 42 / 35 / 27	48 / 43 / 38 / 30	50 / 47 / 43 / 33	52 / 49 / 45 / 39
Unit dimension (Unit dimension with panel) (HxWxD)	mm		265 X 820 X 820 (340 X 990 X 990)			300 X 820 X 820 (375 X 990 X 990)	
Packing dimension (Panel dimension) (HxWxD)	mm		341 X 916 X 916 (125 X 1020 X 1020)			376 X 916 X 916 (125 X 1020 X 1020)	
Unit weight + panel weight	kg		26 + 4		28 + 4		32 + 4
Condensate drain size	mm		19.05				
Pipe connection	mm		19.05 BSP female thread adaptor				
Fan	Type		Turbo fan				
	Drive		Direct				
	Fan speed (H/M/L)	RPM	530 / 450 / 360	600 / 500 / 400	660 / 550 / 450	710 / 610 / 510	800 / 710 / 610
Fan motor	Type		Permanent split capacitor (Induction)				
	Index of Protection (IP)		IP20				
	Insulation grade		B				
	Rated input power (H/M/L)	W	95 / 79 / 67	126 / 103 / 89	167 / 109 / 86	186 / 151 / 118	227 / 176 / 144
	Rated running current (H/M/L)	A	0.44 / 0.40 / 0.36	0.55 / 0.45 / 0.39	0.74 / 0.49 / 0.39	0.85 / 0.71 / 0.57	1.03 / 0.82 / 0.69
	Starting current	A	0.44	0.71	0.89	1.02	1.28
	Motor output	W	30	45	65	80	110
	Poles		8			6	
Coil	Tube	Material	Copper				
		Diameter (mm)	7.00				
	Fin	Material	Aluminium				
		Face area (m <sup>2</sup> )	0.39		0.37		0.46
		Row	2		3		
Water volume	liter	1.36	1.34	1.97	2.35		
Air quality	Filter type		Washable saranet filter				
	Filter quantity	pc	1				
Casing	Colour		White				

Mode	Cooling	Heating
Entering air temperature	27°C DB / 19°C WB	20°C DB
Entering water temperature	7°C	50°C (2-pipe system)
Leaving water temperature	12°C	-

All specifications are subjected to change by the manufacturer without prior notice.

# Ceiling Cassette 3x3 with Brushless DC Motor (50Hz)

## Specification for ceiling cassette (4-pipe system)

Indoor model name		FWKE05EH				FWKE08EH				FWKE11EH				
		Quiet	Low	Medium	High	Quiet	Low	Medium	High	Quiet	Low	Medium	High	
Nominal cooling capacity	Btu/hr	6800	9600	12300	15000	13300	17100	20800	24600	17700	22200	26400	30700	
	W	2000	2800	3600	4400	3900	5000	6100	7200	5200	6500	7750	9000	
Nominal sensible cooling capacity	Btu/hr	5300	7600	10200	13100	9900	13000	16600	19600	13300	16700	20700	24500	
	W	1560	2240	2990	3850	2910	3810	4850	5750	3890	4900	6060	7170	
Nominal heating capacity (entering water temperature: 70°C)	Btu/hr	12800	17200	21700	26100	21800	27300	32800	38200	31900	39100	46200	53400	
	W	3750	5050	6350	7650	6400	8000	9600	11200	9350	11450	13550	15650	
Fan input power	W	7	12	19	37	17	26	50	90	23	39	83	120	
Nominal running current	A	0.11	0.13	0.19	0.26	0.19	0.28	0.43	0.74	0.21	0.35	0.55	0.95	
Power source	V/Ph/Hz	220-240 / 1 / 50												
Control	Air discharge Operation	4-way automatic louver (up & down) LCD wireless micro-computer remote control												
Airflow	CFM	220	350	470	620	420	560	720	890	510	680	870	1060	
Nominal water flow rate (Cooling)	USGPM	1.53	2.14	2.76	3.37	2.99	3.83	4.67	5.51	3.98	4.98	5.93	6.91	
	liters/min	5.80	8.12	10.44	12.75	11.31	14.49	17.68	20.87	15.07	18.84	22.47	26.09	
Nominal water flow rate (Heating)	USGPM	1.44	1.93	2.43	2.93	2.45	3.06	3.68	4.29	3.58	4.38	5.19	5.99	
	liters/min	5.44	7.31	9.20	11.09	9.28	11.58	13.91	16.23	13.55	16.60	19.64	22.68	
Head loss (Cooling)	kPa	5	9	13	18	6	10	15	19	12	19	24	32	
Head loss (Heating): 70°C	kPa	7	10	17	22	13	18	25	32	21	30	39	52	
Max. working pressure	kPa	1608												
Surface air velocity	m/s	0.27	0.43	0.57	0.76	0.54	0.71	0.92	1.13	0.52	0.70	0.89	1.08	
Sound pressure level	dBA	16	23	31	37	31	37	42	47	34	41	46	51	
Unit dimension (Unit dimension with panel) (HxWxD)	mm	265 X 820 X 820 (340 X 990 X 990)						300 X 820 X 820 (375 X 990 X 990)						
Packing dimension (Panel dimension) (HxWxD)	mm	341 X 916 X 916 (125 X 1020 X 1020)						376 X 916 X 916 (125 X 1020 X 1020)						
Unit weight + panel weight	kg	26 + 4				28 + 4				32 + 4				
Condensate drain size	mm	19.05												
Pipe connection	mm	19.05 BSP female thread adaptor												
Fan	Type	Turbo fan												
	Drive	Direct												
	Fan speed	RPM	200	280	360	450	350	440	550	660	400	510	630	750
Fan motor	Type	BLDC												
	Index of Protection (IP)	IP20												
	Insulation grade	E												
	Rated running current	A	0.11	0.13	0.19	0.26	0.19	0.28	0.43	0.74	0.21	0.35	0.55	0.95
	Starting current	A	N/A											
	Motor output	W	70						100					
	Poles	8												
Coil	Tube	Material	Copper											
		Diameter (mm)	7.00											
	Fin	Material	Aluminium											
		Face area (m <sup>2</sup> )	0.39				0.37				0.46			
		Row	2				3							
Water volume	liter	1.36				1.97				2.35				
Air quality	Filter type	Washable saranet filter												
	Filter quantity	pc	1											
Casing	Colour	White												

**Note:**

- A) Based on Eurovent conditions.
- B) Additional 10W is required for condensate water drain pump.
- C) Sound pressure level is tested as per JIS standard as below:  
 FWKE05EH - 1.4m below the face centre of air return of the unit  
 FWKE08/11EH - 1.5m below the face centre of air return of the unit

Mode	Cooling	Heating
Entering air temperature	27°C DB / 19°C WB	20°C DB
Entering water temperature	7°C	70°C (4-pipe system)
Leaving water temperature	12°C	60°C (4-pipe system)

All specifications are subjected to change by the manufacturer without prior notice.

# Ceiling Concealed (50Hz)

Specification for ceiling concealed standard delta-T

Model		FWC12G	FWC14G	FWC16G	FWC18G	FWC20G	
Nominal cooling capacity	Btu/hr	36000	42000	48000	54000	60000	
	W	10550	12310	14070	15830	17580	
Nominal sensible cooling capacity	Btu/hr	27900	33900	38200	43900	50000	
	W	8180	9940	11200	12870	14650	
Nominal total input power	W	246	450	558	624	659	
Nominal running current	A	1.10	1.96	2.43	2.72	2.87	
Power source	V/Ph/Hz	220-240/1/50					
Control	Air discharge	Ducted					
	Operation	Without controller					
Air flow (H/M/L)	CFM	1200/975/810	1400/1130/825	1600/1300/905	1800/1445/1060	2000/1530/1075	
External static pressure (H/M/L)	Pa	50/33/23	75/48/24	75/48/24	75/48/25	75/45/22	
Nominal water flow rate	USGPM	7.99	9.32	10.65	11.98	13.31	
	litres/min	30.26	35.31	40.35	45.40	50.44	
Head loss (Cooling)	kPa	38	31	27	33	32	
Max. working pressure	kPa	1608					
Surface air velocity	m/s	2.05	2.43	2.41	2.71	2.65	
Sound pressure level (H/M/L)	dBA	44/40/37	47/43/35	48/44/37	49/45/39	50/46/38	
Unit dimension	H x W x D	mm	251X461x1514	363X660x1116	363X660x1254	363X660x1394	
Packing dimension	H x W x D	mm	595X284x1724	760X395x1331	760X395x1469	760X395x1609	
Unit weight	kg	30	34	37	38	41	
Condensate drain size	mm	19.05					
Pipe connection	mm	19.05 BSP FEMALE THREAD ADAPTOR	25.4 BSP FEMALE THREAD ADAPTOR				
INDOOR UNIT	Fan	Type	Blower				
		Drive	Direct				
		Quantity	4	2	2	2	2
		Fan speed (H/M/L)	RPM	1320/1050/965	1065/875/675	1115/920/690	1210/1000/740
Fan motor	Type	PERMANENT SPLIT CAPACITOR (INDUCTION)					
	Index of protection (IP)	IP20					
	Insulation grade	B					
	Quantity	2	1	1	1	1	
	Rated input power (H/M/L)	W	246/200/158	450/307/173	558/385/214	624/459/295	659/497/313
	Rated running current (H/M/L)	A	1.10/0.88/0.70	1.96/1.34/0.76	2.43/1.68/0.95	2.72/2.00/1.31	2.87/2.17/1.40
	Starting current	A	1.62	2.75	3.81	4.38	4.35
	Motor output	W	146	248	342	418	446
Coil	Poles	4					
	Tube	Material	Copper				
		Diameter (mm)	7.00	9.52			
	Fin	Material	Aluminium				
		Face area (m <sup>2</sup> )	0.28	0.22	0.26	0.26	0.29
Row	3						
Water volume	litre	1.29	2.00	2.32	2.32	2.63	
Air quality	Filter	Type	OPTION (WASHABLE SARANET FILTER OR ALUMINIUM MESH FILTER)				
		Quantity	pc	4	2	3	3
Casing	Colour	Without paint					

Mode	Cooling (2 Pipe)
Entering air temperature	27°C DB / 19°C WB
Entering water temperature	7°C
Leaving water temperature	12°C

All specifications are subjected to change by the manufacturer without prior notice.



The DAIKIN logo is located in the top left corner. It features a stylized white triangle to the left of the word "DAIKIN" in a bold, white, sans-serif font.

PCVMY1321A

The text "VRV IV" is positioned in the center-left of the page. "VRV" is written in a large, stylized font with horizontal lines through the letters, and "IV" is in a smaller, classic serif font.

Some model names might differ and some products might not be available depending on the country of sale. For further information, please contact one of our sales companies.

Cooling Only 50Hz

**R-410A**

# Specifications

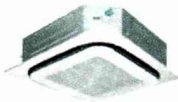
## VRV Indoor Units

### Ceiling Mounted Cassette (Round Flow with Sensing) Type



MODEL		FXFQ25SVM	FXFQ32SVM	FXFQ40SVM	FXFQ50SVM	FXFQ63SVM	FXFQ80SVM	FXFQ100SVM	FXFQ125SVM	
Power supply		1-phase, 220-240 V/220-230 V, 50/60 Hz								
Cooling capacity	kcal/h	2,400	3,100	3,900	4,800	6,100	7,700	9,600	12,000	
	Btu/h	9,600	12,300	15,400	19,100	24,200	30,700	38,200	47,800	
	kW	2.8	3.6	4.5	5.6	7.1	9.0	11.2	14.0	
Power consumption	Cooling	kW	0.031	0.031	0.041	0.080	0.095	0.095	0.194	0.219
Casing		Galvanised steel plate								
Airflow rate (H/M/L)	m <sup>3</sup> /min	12.5/11.5/10.0	12.5/11.5/10.0	14.5/13.0/11.0	22.0/17.5/13.5	23.5/18.5/13.5	23.5/19.5/15.0	33.0/26.0/19.0	34.5/27.5/21.0	
	cfm	441/406/353	441/406/353	512/459/388	777/618/477	830/653/477	830/689/530	1,165/918/671	1,218/971/741	
Sound level(H/M/L)	dB(A)	30/28.5/27	30/28.5/27	31/29/27	36/32/28	38/33/28	38/35/31	44/38/32	45/40/35	
Dimensions (HxWxD)		mm						246x840x840		288x840x840
Machine weight		kg		19		23		26		
Piping connections	Liquid (Flare)	mm				φ6.4		φ9.5		
	Gas (Flare)	mm				φ12.7		φ15.9		
	Drain	I.D. φ25xO.D. φ32(VP25)								
Panel (Option)	Model		BYCQ125B-W1							
	Colour		Fresh white							
	Dimensions(HxWxD)	mm	50x950x950							
	Weight	kg	5.5							

### Ceiling Mounted Cassette (Round Flow) Type



MODEL		FXFQ25LUV1	FXFQ32LUV1	FXFQ40LUV1	FXFQ50LUV1	FXFQ63LUV1	FXFQ80LUV1	FXFQ100LUV1	FXFQ125LUV1	
Power supply		1-phase, 220-240 V, 50 Hz								
Cooling capacity	kcal/h	2,400	3,100	3,900	4,800	6,100	7,700	9,600	12,000	
	Btu/h	9,600	12,300	15,400	19,100	24,200	30,700	38,200	47,800	
	kW	2.8	3.6	4.5	5.6	7.1	9.0	11.2	14.0	
Power consumption	Cooling	kW	0.033	0.033	0.047	0.052	0.066	0.093	0.187	0.209
Casing		Galvanised steel plate								
Airflow rate (HH/H/L)	m <sup>3</sup> /min	13/11.5/10	13/11.5/10	15/13/11	16/13.5/11	19/16.5/13.5	21/18/15	32/26/20	33/28/22.5	
	cfm	459/406/353	459/406/353	530/459/388	565/477/388	671/583/477	742/636/530	1,130/918/706	1,165/989/794	
Sound level (HH/H/L)	dB(A)	30/28.5/27	30/28.5/27	31/29/27	32/29.5/27	34/31/28	36/33.5/31	43/37.5/32	44/39/34	
Dimensions (HxWxD)		mm						246X840X840		288X840X840
Machine weight		kg		19.5		22		25		
Piping connections	Liquid (Flare)	mm				φ6.4		φ9.5		
	Gas (Flare)	mm				φ12.7		φ15.9		
	Drain	VP25 (External Dia, 32/Internal Dia, 25)								
Panel (Option)	Model		BYCP125K-W1							
	Colour		Fresh white							
	Dimensions(HxWxD)	mm	50x950x950							
	Weight	kg	5.5							

Note: Specifications are based on the following conditions:

- Cooling: Indoor temp.: 27°CDB, 19°CWB, Outdoor temp.: 35°CDB, Equivalent piping length: 7.5m, Level difference: 0m.
- Capacity of indoor unit is only for reference. Actual capacity of indoor unit is based on the total capacity index. (See Engineering Data Book for details.)
- Sound level: Anechoic chamber conversion value, measured at a point 1.5m downward from the unit centre.

### Ceiling Mounted Duct Type



MODEL		FXMQ200MAVE	FXMQ250MAVE
Power supply		1-phase, 220-240 V/220 V, 50/60 Hz	
Cooling capacity	kcal/h	19,300	24,100
	Btu/h	76,400	95,500
	kW	22.4	28.0
Power consumption	Cooling kW	1.294 *1	1.465 *1
Casing		Galvanised steel plate	
Airflow rate (H/L)	m <sup>3</sup> /min	58/50	72/62
	cfm	2,047/1,765	2,542/2,189
External static pressure		Pa	132-221 *2
Sound level (H/L)	220 V	dB(A)	48/45
	240 V		49/46
Dimensions (H×W×D)		mm	470×1,380×1,100
Machine weight		kg	137
Piping connections	Liquid (Flare)	mm	φ 9.5
	Gas (Brazing)		φ 19.1
	Drain		PS1B

### Ceiling Suspended Type



MODEL		FXHQ32MAVE	FXHQ63MAVE	FXHQ100MAVE
Power supply		1-phase, 220-240 V/220 V, 50/60 Hz		
Cooling capacity	kcal/h	3,100	6,100	9,600
	Btu/h	12,300	24,200	38,200
	kW	3.6	7.1	11.2
Power consumption	Cooling kW	0.111	0.115	0.135
Casing		White (10Y9/0.5)		
Airflow rate (H/L)	m <sup>3</sup> /min	12/10	17.5/14	25/19.5
	cfm	424/353	618/494	883/688
Sound level (H/L)		dB(A)	36/31	39/34
Dimensions (H×W×D)		mm	195×960×680	195×1,400×680
Machine weight		kg	24.0	28.0
Piping connections	Liquid (Flare)	mm	φ 6.4	φ 9.5
	Gas (Flare)		φ 12.7	φ 15.9
	Drain		VP20 (External Dia, 26/Internal Dia, 20)	

Note: Specifications are based on the following conditions;

- Cooling: Indoor temp.: 27°CDB, 19°CWB, Outdoor temp.: 35°CDB, Equivalent piping length: 7.5 m, Level difference: 0 m.
- Capacity of indoor unit is only for reference. Actual capacity of indoor unit is based on the total capacity index. (See Engineering Data Book for details.)
- Sound level: (FXMQ-MA) Anechoic chamber conversion value, measured at a point 1.5 m downward from the unit centre. (FXHQ-MA) Anechoic chamber conversion value, measured at a point 1 m in front of the unit and 1 m downward. During actual operation, these values are normally somewhat higher as a result of ambient conditions
- \*1: Power consumption values are based on conditions of standard external static pressure.
- \*2: External static pressure is changeable to change over the connectors inside electrical box, this pressure means "Standard-High static pressure".

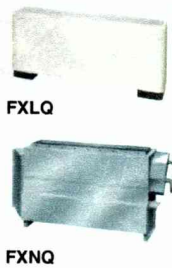
# Specifications

## VRV Indoor Units

### Wall Mounted Type

MODEL		FXAQ20PVE	FXAQ25PVE	FXAQ32PVE	FXAQ40PVE	FXAQ50PVE	FXAQ63PVE	
Power supply		1-phase, 220-240 V/220 V, 50/60 Hz						
Cooling capacity	kcal/h	1,900	2,400	3,100	3,900	4,800	6,100	
	Btu/h	7,500	9,600	12,300	15,400	19,100	24,200	
	kW	2.2	2.8	3.6	4.5	5.6	7.1	
Power consumption	Cooling	kW	0.019	0.028	0.030	0.020	0.033	0.050
Casing		White (3.0Y8.5/0.5)						
Airflow rate (H/L)	m <sup>3</sup> /min	7.5/4.5	8/5	8.5/5.5	12/9	15/12	19/14	
	cfm	265/159	282/177	300/194	424/318	530/424	671/494	
Sound level (H/L)	dB(A)	35/31	36/31	38/31	39/34	42/37	47/41	
Dimensions (HxWxD)	mm	290x795x238	290x795x238	290x795x238	290x1,050x238	290x1,050x238	290x1,050x238	
Machine weight	kg	11.0	11.0	11.0	14.0	14.0	14.0	
Piping connections	Liquid (Flare)	mm	φ6.4	φ6.4	φ6.4	φ6.4	φ6.4	φ9.5
	Gas (Flare)		φ12.7	φ12.7	φ12.7	φ12.7	φ12.7	φ15.9
	Drain		VP13 (External Dia, 18/Internal Dia, 13)					

### Floor Standing Type/Concealed Floor Standing Type



MODEL		FXLQ20MAVE	FXLQ25MAVE	FXLQ32MAVE	FXLQ40MAVE	FXLQ50MAVE	FXLQ63MAVE	
		FXNQ20MAVE	FXNQ25MAVE	FXNQ32MAVE	FXNQ40MAVE	FXNQ50MAVE	FXNQ63MAVE	
Power supply		1-phase, 220-240 V/220 V, 50/60 Hz						
Cooling capacity	kcal/h	1,900	2,400	3,100	3,900	4,800	6,100	
	Btu/h	7,500	9,600	12,300	15,400	19,100	24,200	
	kW	2.2	2.8	3.6	4.5	5.6	7.1	
Power consumption	Cooling	kW	0.049	0.049	0.090	0.090	0.110	0.110
Casing		FXLQ: Ivory white (5Y7.5/1)/FXNQ: Galvanised steel plate						
Airflow rate (H/L)	m <sup>3</sup> /min	7/6	7/6	8/6	11/8.5	14/11	16/12	
	cfm	247/212	247/212	282/212	388/300	494/388	565/424	
Sound level (H/L)	dB(A)	35/32	35/32	35/32	38/33	39/34	40/35	
Dimensions (HxWxD)	FXLQ	600x1,000x222	600x1,000x222	600x1,140x222	600x1,140x222	600x1,420x222	600x1,420x222	
	FXNQ	610x930x220	610x930x220	610x1,070x220	610x1,070x220	610x1,350x220	610x1,350x220	
Machine weight	FXLQ	25.0	25.0	30.0	30.0	36.0	36.0	
	FXNQ	19.0	19.0	23.0	23.0	27.0	27.0	
Piping connections	Liquid (Flare)	mm	φ6.4	φ6.4	φ6.4	φ6.4	φ6.4	φ9.5
	Gas (Flare)		φ12.7	φ12.7	φ12.7	φ12.7	φ12.7	φ15.9
	Drain		VP13 (External Dia, 18/Internal Dia, 13)					

Note: Specifications are based on the following conditions:

- Cooling: Indoor temp.: 27°CDB, 19°CWB, Outdoor temp.: 35°CDB, Equivalent piping length: 7.5 m, Level difference: 0 m.
- Capacity of indoor unit is only for reference. Actual capacity of indoor unit is based on the total capacity index. (See Engineering Data Book for details.)
- Sound level: (FXAQ-P) Anechoic chamber conversion value, measured at a point 1 m in front of the unit and 1 m downward. (FXLQ-MA, FXNQ-MA) Anechoic chamber conversion value, measured at a point 1.5 m in front of the unit at a height of 1.5 m. During actual operation, these values are normally somewhat higher as a result of ambient conditions.



APCVD11613



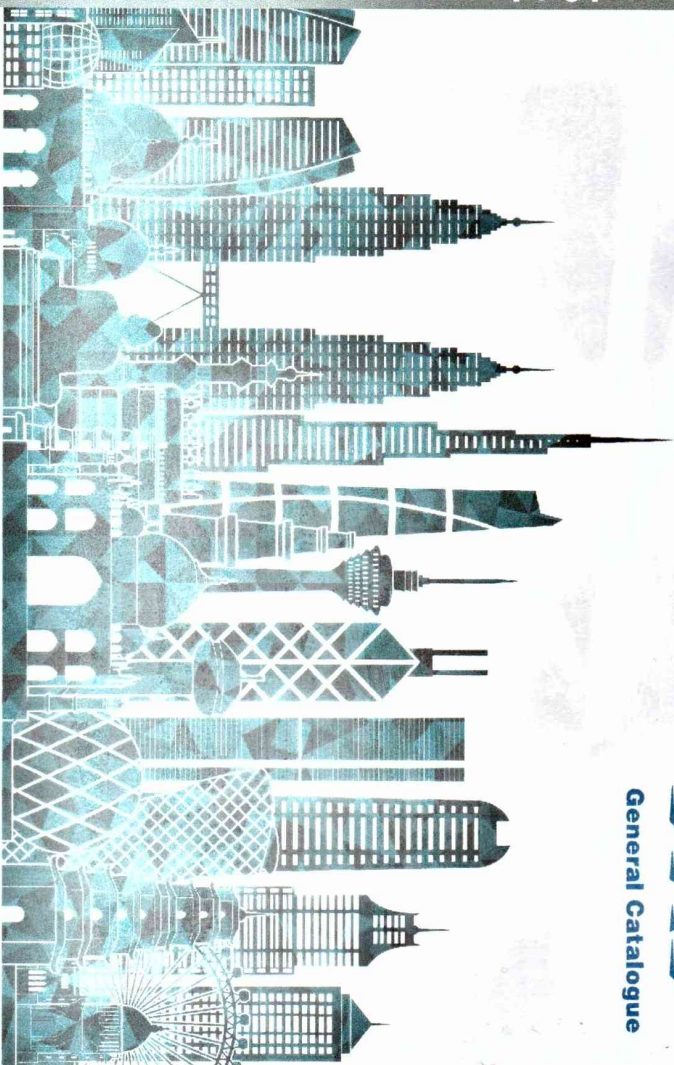
General Catalogue

- Warning**
- Ask a qualified installer or contractor to install this product. Do not try to install the product yourself. Improper installation can result in water or refrigerant leakage, electrical shock, fire or explosion.
  - Use only those parts and accessories supplied or specified by Daikin. Ask a qualified installer or contractor to install those parts and accessories. Use of unauthorised parts and accessories or improper installation of parts and accessories can result in water or refrigerant leakage, electrical shock, fire or explosion.
  - Read the user's manual carefully before using this product. The user's manual provides important safety instructions and warnings. Be sure to follow these instructions and warnings.
- If you have any enquiries, please contact your local importer, distributor and/or retailer.

**Cautions on product corrosion**

1. Air conditioners should not be installed in areas where corrosive gases, such as acid gas or alkaline gas, are produced.
2. If the outdoor unit is to be installed close to the sea shore, direct exposure to the sea breeze should be avoided. If you need to install the outdoor unit close to the sea shore, contact your local distributor.

Cooling Only 50Hz



COOLING ONLY 50Hz  
**R-410A**

# Specifications

## Outdoor Units

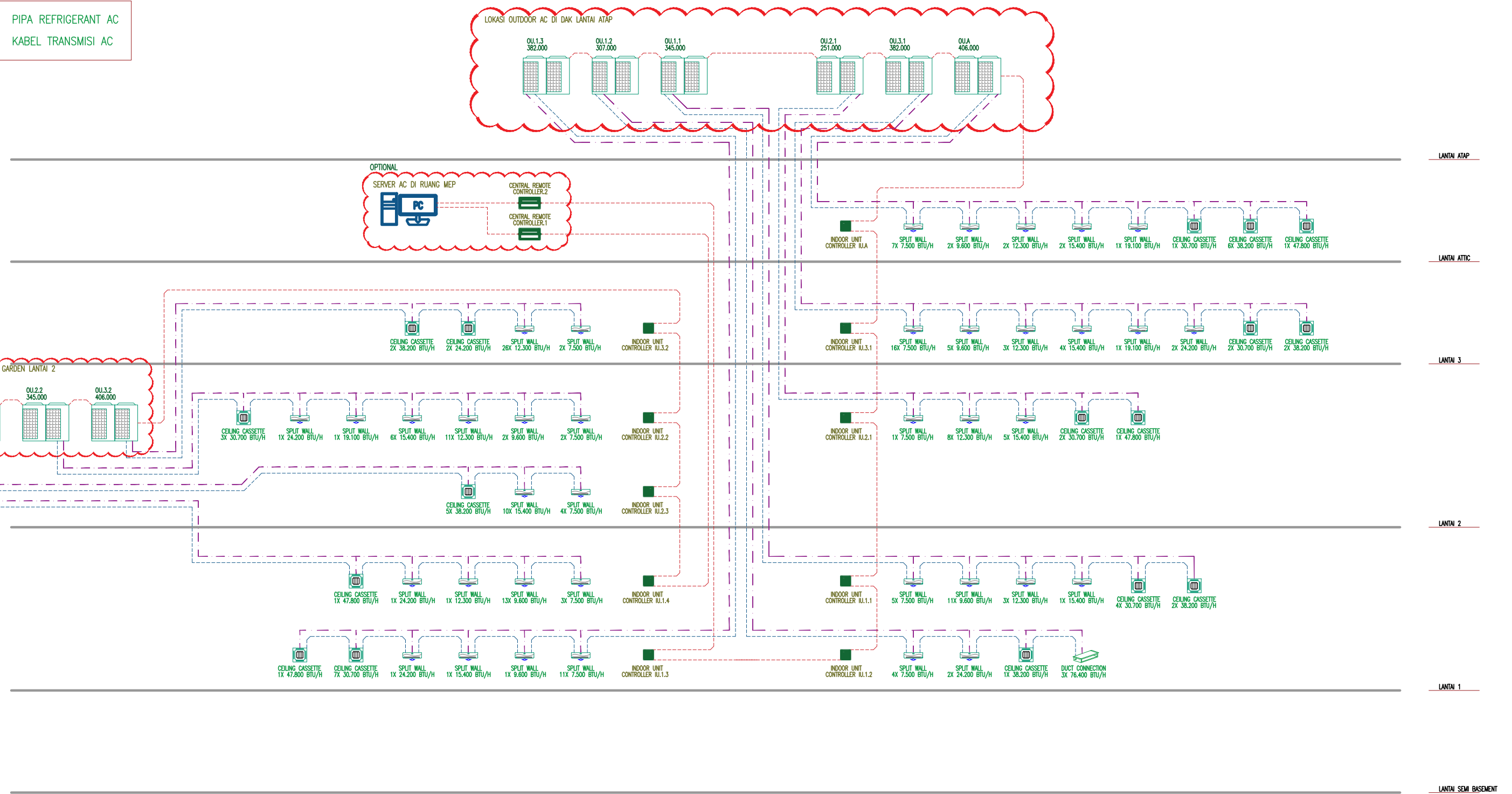
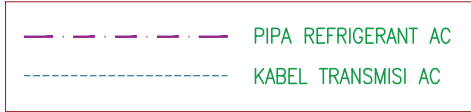
### Standard Type

MODEL	RWHQ181TVM			RWHQ201TVM			RWHQ221TVM			RWHQ241TVM			RWHQ261TVM			RWHQ281TVM			RWHQ301TVM				
	RWHQ181TVM	RWHQ181TVM	RWHQ181TVM	RWHQ201TVM	RWHQ201TVM	RWHQ201TVM	RWHQ221TVM	RWHQ221TVM	RWHQ221TVM	RWHQ241TVM	RWHQ241TVM	RWHQ241TVM	RWHQ261TVM	RWHQ261TVM	RWHQ261TVM	RWHQ281TVM	RWHQ281TVM	RWHQ281TVM	RWHQ301TVM	RWHQ301TVM	RWHQ301TVM		
Power supply	3-phase 4-wire system, 380-415/380 V, 50/60 Hz																						
Cooling capacity	kcal/h	43,300	48,100	53,700	58,500	63,200	68,800	73,100															
	Btu/h	172,000	191,000	213,000	232,000	251,000	273,000	290,000															
Power consumption	kW	50.4	55.9	62.4	68.0	73.5	80.0	85.0															
	Capacity control	%	8-100	14.1	15.9	18.0	19.7	21.6	23.7														
Capacity control	Ivory white (5Y7.5/1)																						
Gasing colour	Type	Hermetically Sealed Scroll Type																					
	Motor output	3.4kV+ (4.1x1)		3.4kV+ (5.2x1)		3.4kV+ (3.3x1)		4.1kV+ (2.9x1)+ (3.3x1)		5.2kV+ (3.3x1)		2.9kV+3.3kV+ (3.6kV+3.3kV)		2.9kV+3.3kV+ (3.6kV+3.7kV)									
Airflow rate	m <sup>3</sup> /min	157+165		157+178		157+233		165+233		178+233		233+233		233+233									
	Dimensions (HxWxD)	1567x930x765+ (1567x930x765)		1567x930x765+ (1567x930x765)		1567x930x765+ (1567x1240x765)		1567x930x765+ (1567x1240x765)		1567x930x765+ (1567x1240x765)		1567x930x765+ (1567x1240x765)		1567x930x765+ (1567x1240x765)									
Machine weight	kg	185+200		185+200		185+285		200+285		200+285		285+285		285+285									
	Sound level	60		61		61		62		63		63		64									
Operation range	%CDB	15 to 49																					
	Type	R-410A																					
Refrigerant	Charge	6.4+6.5		6.4+6.8		6.4+10.3		6.5+10.3		6.8+10.3		10.3+10.3		10.3+10.4									
	Piping connections (indoor unit)	Liquid φ15.9 (Brazeing)		φ15.9 (Brazeing)		φ15.9 (Brazeing)		φ15.9 (Brazeing)		φ19.1 (Brazeing)		φ19.1 (Brazeing)		φ19.1 (Brazeing)									
Piping connections (outdoor unit)	Gas	φ28.6 (Brazeing)		φ28.6 (Brazeing)		φ28.6 (Brazeing)		φ34.9 (Brazeing)		φ34.9 (Brazeing)		φ34.9 (Brazeing)		φ34.9 (Brazeing)									
	Inlet pipe	φ19.1(Brazeingx2)																					
Piping connections (Heat exchanger unit)	Outlet pipe	φ19.1(Brazeingx2)																					

Note: Specifications are based on the following conditions:

- Cooling: indoor temp.: 27°CDB, 19°CWB, Outdoor temp.: 35°CDB, Equivalent piping length: 7.5 m, Level difference: 0 m.
  - Sound level: Anechoic chamber conversion value, measured at a point 1 m in front of the unit at a height of 1.5 m.
- During actual operation, these values are normally somewhat higher as a result of ambient conditions.

MODEL	RWHQ321TVM			RWHQ341TVM			RWHQ361TVM			RWHQ381TVM			RWHQ401TVM			RWHQ421TVM			RWHQ441TVM			RWHQ461TVM			
	RWHQ321TVM	RWHQ321TVM	RWHQ321TVM	RWHQ341TVM	RWHQ341TVM	RWHQ341TVM	RWHQ361TVM	RWHQ361TVM	RWHQ361TVM	RWHQ381TVM	RWHQ381TVM	RWHQ381TVM	RWHQ401TVM	RWHQ401TVM	RWHQ401TVM	RWHQ421TVM	RWHQ421TVM	RWHQ421TVM	RWHQ441TVM	RWHQ441TVM	RWHQ461TVM	RWHQ461TVM	RWHQ461TVM		
Power supply	3-phase 4-wire system, 380-415/380 V, 50/60 Hz																								
Cooling capacity	kcal/h	77,400	81,700	86,900	91,200	96,300	102,000	107,000	112,000																
	Btu/h	307,000	324,000	345,000	362,000	382,000	406,000	423,000	444,000																
Power consumption	kW	90.0	96.0	101	106	112	119	124	130																
	Capacity control	%	26.1	25.1	26.8	29.4	30.8	32.6	34.7	36.9															
Capacity control	Ivory white (5Y7.5/1)																								
Gasing colour	Type	Hermetically Sealed Scroll Type																							
	Motor output	2.9kV+3.3kV+ (4.4kV+4.0kV)		4.1kV+5.2kV+ (5.2x1)		5.2kV+5.2kV+ (5.2x1)		3.4kV+5.2kV+ (4.4kV+4.0kV)		5.2kV+5.2kV+ (3.6kV+3.7kV)		5.2kV+6.9kV+ (3.3kV+6.6kV)		5.2kV+6.9kV+ (3.7kV)		5.2kV+6.9kV+ (3.7kV)		5.2kV+6.9kV+ (3.7kV)		5.2kV+6.9kV+ (3.7kV)		5.2kV+6.9kV+ (3.7kV)		2.9kV+3.3kV+ (4.4kV+4.0kV)	
Airflow rate	m <sup>3</sup> /min	233+233		165+178+178		178+178+178		157+178+233		178+178+233		178+233+233		178+233+233		233+233+233		233+233+233		233+233+233		233+233+233		233+233+233	
	Dimensions (HxWxD)	1567x1240x765+ (1567x1240x765)		1567x930x765+ (1567x930x765)		1567x930x765+ (1567x930x765)		1567x930x765+ (1567x1240x765)		1567x930x765+ (1567x1240x765)		1567x930x765+ (1567x1240x765)		1567x930x765+ (1567x1240x765)		1567x930x765+ (1567x1240x765)		1567x930x765+ (1567x1240x765)		1567x930x765+ (1567x1240x765)		1567x930x765+ (1567x1240x765)		1567x930x765+ (1567x1240x765)	
Machine weight	kg	285+285		200+200+200		200+200+200		185+200+285		200+200+285		200+285+285		200+285+285		285+285+285		285+285+285		285+285+285		285+285+285		285+285+285	
	Sound level	64		63		64		64		65		65		65		65		65		65		65		66	
Operation range	%CDB	15 to 49																							
	Type	R-410A																							
Refrigerant	Charge	10.3+10.5		6.5+6.8+6.8		6.8+6.8+6.8		6.4+6.8+10.5		6.8+6.8+10.4		6.8+10.3+10.4		6.8+10.4+10.4		10.3+10.3+10.5									
	Piping connections (indoor unit)	φ19.1 (Brazeing)		φ19.1 (Brazeing)		φ19.1 (Brazeing)		φ19.1 (Brazeing)		φ19.1 (Brazeing)		φ19.1 (Brazeing)		φ19.1 (Brazeing)		φ19.1 (Brazeing)									
Piping connections (outdoor unit)	Gas	φ34.9 (Brazeing)		φ34.9 (Brazeing)		φ41.3 (Brazeing)		φ41.3 (Brazeing)		φ41.3 (Brazeing)		φ41.3 (Brazeing)		φ41.3 (Brazeing)		φ41.3 (Brazeing)									
	Inlet pipe	φ19.1(Brazeingx2)																							
Piping connections (Heat exchanger unit)	Outlet pipe	φ19.1(Brazeingx2)																							



COOLING TOWER - 2 (SKB-470)  
 KAPASITAS = 317 TR  
 FLOW RATE = 219 M<sup>3</sup>/H  
 INPUT POWER = 5,5 KW / 4 POLES  
 DIMENSION UNIT (LxWxH) = 3630x4500x2930 (MM)

COOLING TOWER - 1 (SKB-470)  
 KAPASITAS = 317 TR  
 FLOW RATE = 219 M<sup>3</sup>/H  
 INPUT POWER = 5,5 KW / 4 POLES  
 DIMENSION UNIT (LxWxH) = 3630x4500x2930 (MM)

MAKE UP WATER  
COOLING TOWER

EXPANSION TANK

LANTAI ATAP

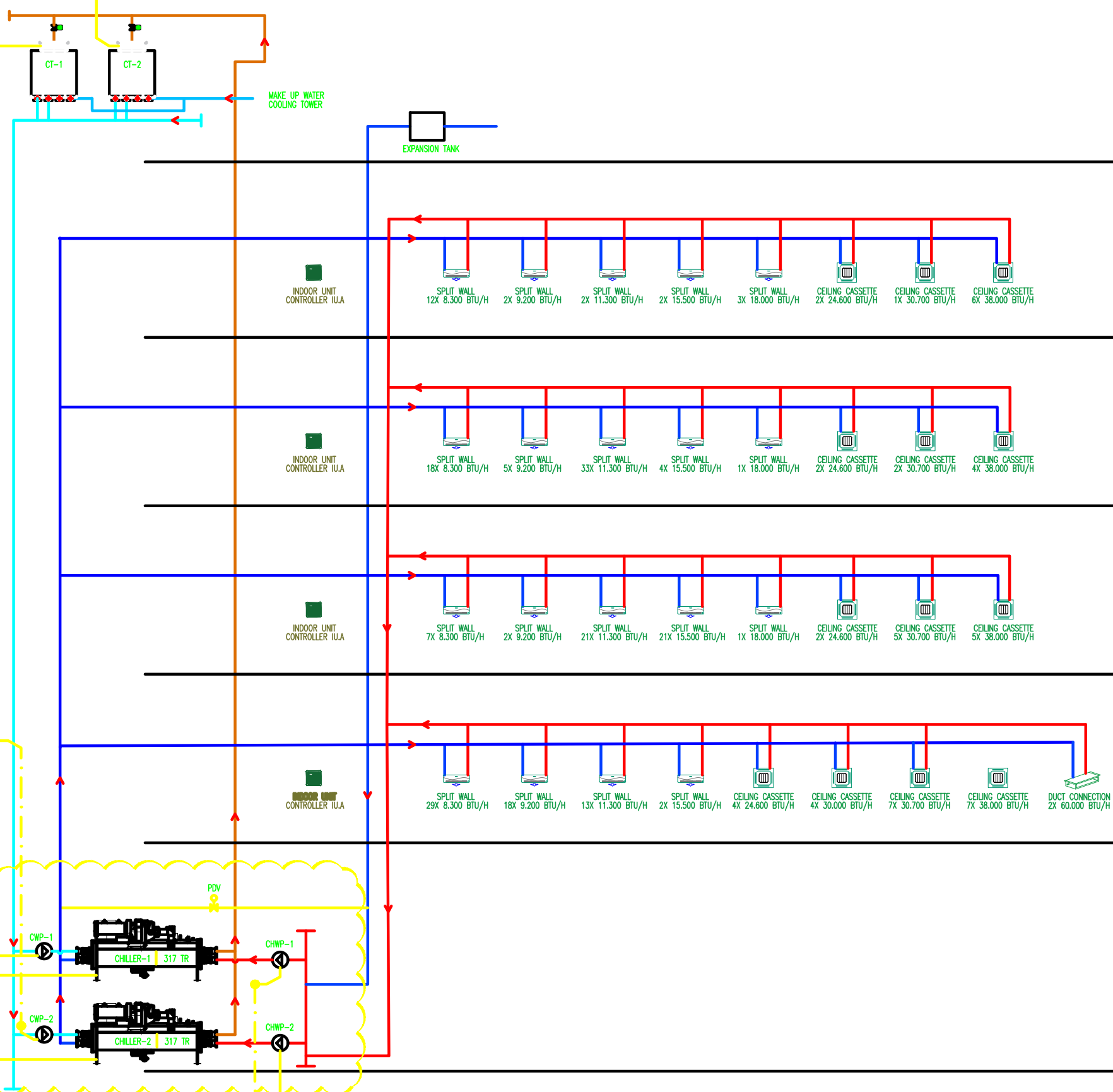
LANTAI ATTIC

LANTAI 3

LANTAI 2

LANTAI 1

LANTAI SEMI BASEMENT



CWP-2  
 WATER FLOW RATE = 216 (M<sup>3</sup>/H)  
 PUMP HEAD = 25 (M)  
 PUMP EFFICIENCY = 80 (%)  
 PUMP KW INPUT = 18,4 (KW)

CWP-1  
 WATER FLOW RATE = 216 (M<sup>3</sup>/H)  
 PUMP HEAD = 25 (M)  
 PUMP EFFICIENCY = 80 (%)  
 PUMP KW INPUT = 18,4 (KW)

CHILLER-1 (ZUW-Y-5M2L-F-JDE-3-FCL-2-N):  
 KAPASITAS = 317 TR  
 INPUT POWER = 192,4 KW  
 EVAP FLOW RATE = 48 L/S (172,8 M<sup>3</sup>/H)  
 CONDENSER FLOW RATE = 60 L/S (216 M<sup>3</sup>/H)  
 DIMENSION UNIT (LxWxH) = 3623x1758x2346 (MM)

CHILLER-2 (ZUW-Y-5M2L-F-JDE-3-FCL-2-N):  
 KAPASITAS = 317 TR  
 INPUT POWER = 192,4 KW  
 EVAP FLOW RATE = 48 L/S (172,8 M<sup>3</sup>/H)  
 CONDENSER FLOW RATE = 60 L/S (216 M<sup>3</sup>/H)  
 DIMENSION UNIT (LxWxH) = 3623x1758x2346 (MM)

CHWP-2  
 WATER FLOW RATE = 172,8 (M<sup>3</sup>/H)  
 PUMP HEAD = 25 (M)  
 PUMP EFFICIENCY = 80 (%)  
 PUMP KW INPUT = 14,7 (KW)

CHWP-1  
 WATER FLOW RATE = 172,8 (M<sup>3</sup>/H)  
 PUMP HEAD = 25 (M)  
 PUMP EFFICIENCY = 80 (%)  
 PUMP KW INPUT = 14,7 (KW)

INDOOR UNIT CONTROLLER I.U.A.

INDOOR UNIT CONTROLLER I.U.A.

INDOOR UNIT CONTROLLER I.U.A.

INDOOR UNIT CONTROLLER I.U.A.

CHILLER-1 317 TR

CHILLER-2 317 TR

SPLIT WALL 12X 8.300 BTU/H

SPLIT WALL 2X 9.200 BTU/H

SPLIT WALL 2X 11.300 BTU/H

SPLIT WALL 2X 15.500 BTU/H

SPLIT WALL 3X 18.000 BTU/H

CEILING CASSETTE 2X 24.600 BTU/H

CEILING CASSETTE 1X 30.700 BTU/H

CEILING CASSETTE 6X 38.000 BTU/H

SPLIT WALL 18X 8.300 BTU/H

SPLIT WALL 5X 9.200 BTU/H

SPLIT WALL 33X 11.300 BTU/H

SPLIT WALL 4X 15.500 BTU/H

SPLIT WALL 1X 18.000 BTU/H

CEILING CASSETTE 2X 24.600 BTU/H

CEILING CASSETTE 2X 30.700 BTU/H

CEILING CASSETTE 4X 38.000 BTU/H

SPLIT WALL 7X 8.300 BTU/H

SPLIT WALL 2X 9.200 BTU/H

SPLIT WALL 21X 11.300 BTU/H

SPLIT WALL 21X 15.500 BTU/H

SPLIT WALL 1X 18.000 BTU/H

CEILING CASSETTE 2X 24.600 BTU/H

CEILING CASSETTE 5X 30.700 BTU/H

CEILING CASSETTE 5X 38.000 BTU/H

SPLIT WALL 29X 8.300 BTU/H

SPLIT WALL 18X 9.200 BTU/H

SPLIT WALL 13X 11.300 BTU/H

SPLIT WALL 2X 15.500 BTU/H

CEILING CASSETTE 4X 24.600 BTU/H

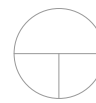
CEILING CASSETTE 4X 30.000 BTU/H

CEILING CASSETTE 7X 30.700 BTU/H

CEILING CASSETTE 7X 38.000 BTU/H

DUCT CONNECTION 2X 60.000 BTU/H



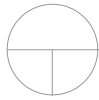


# DENAH LANTAI 1

SKALA

1 : 250

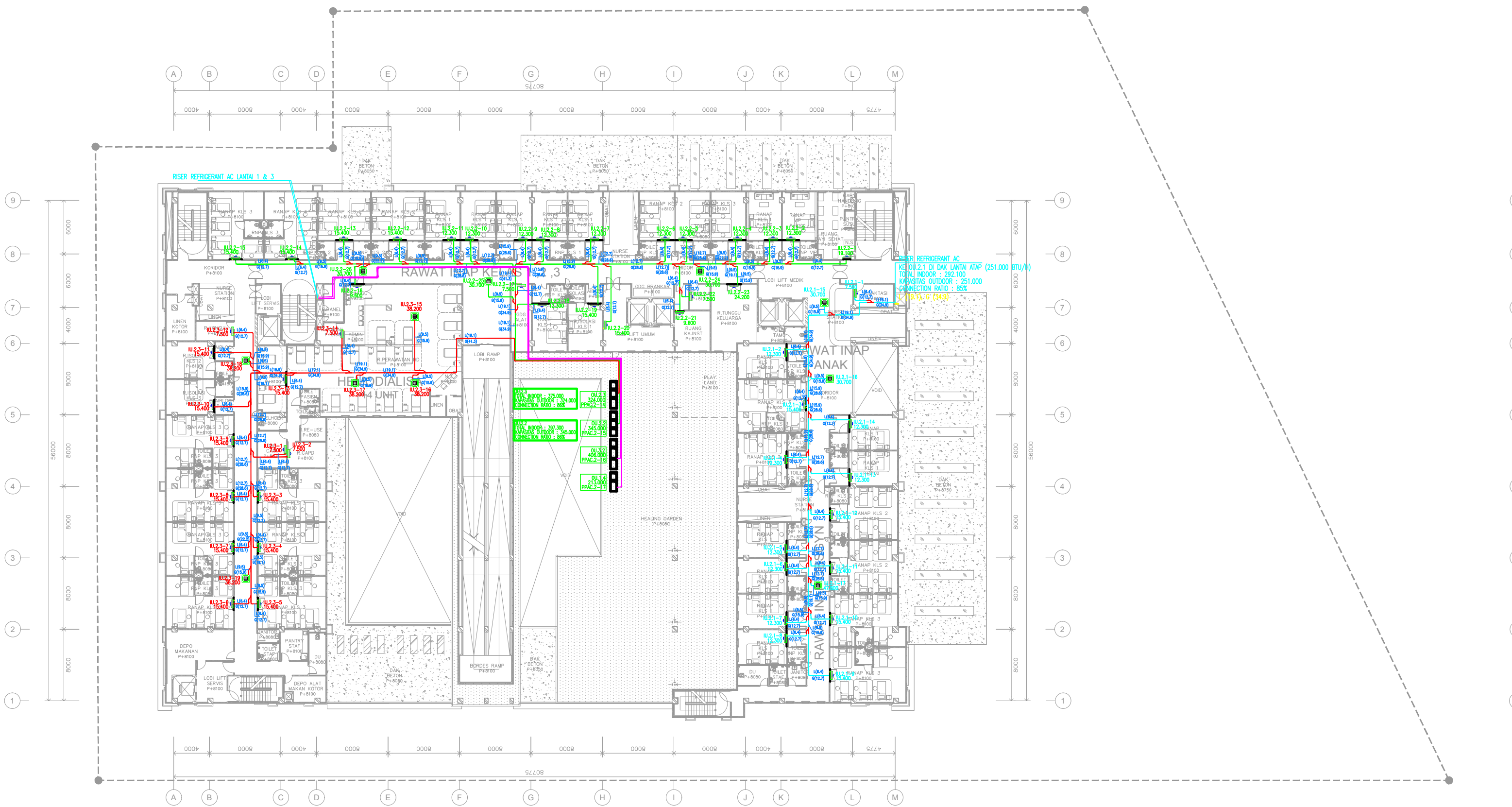


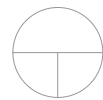


DENAH LANTAI 2

SKALA

1 : 250

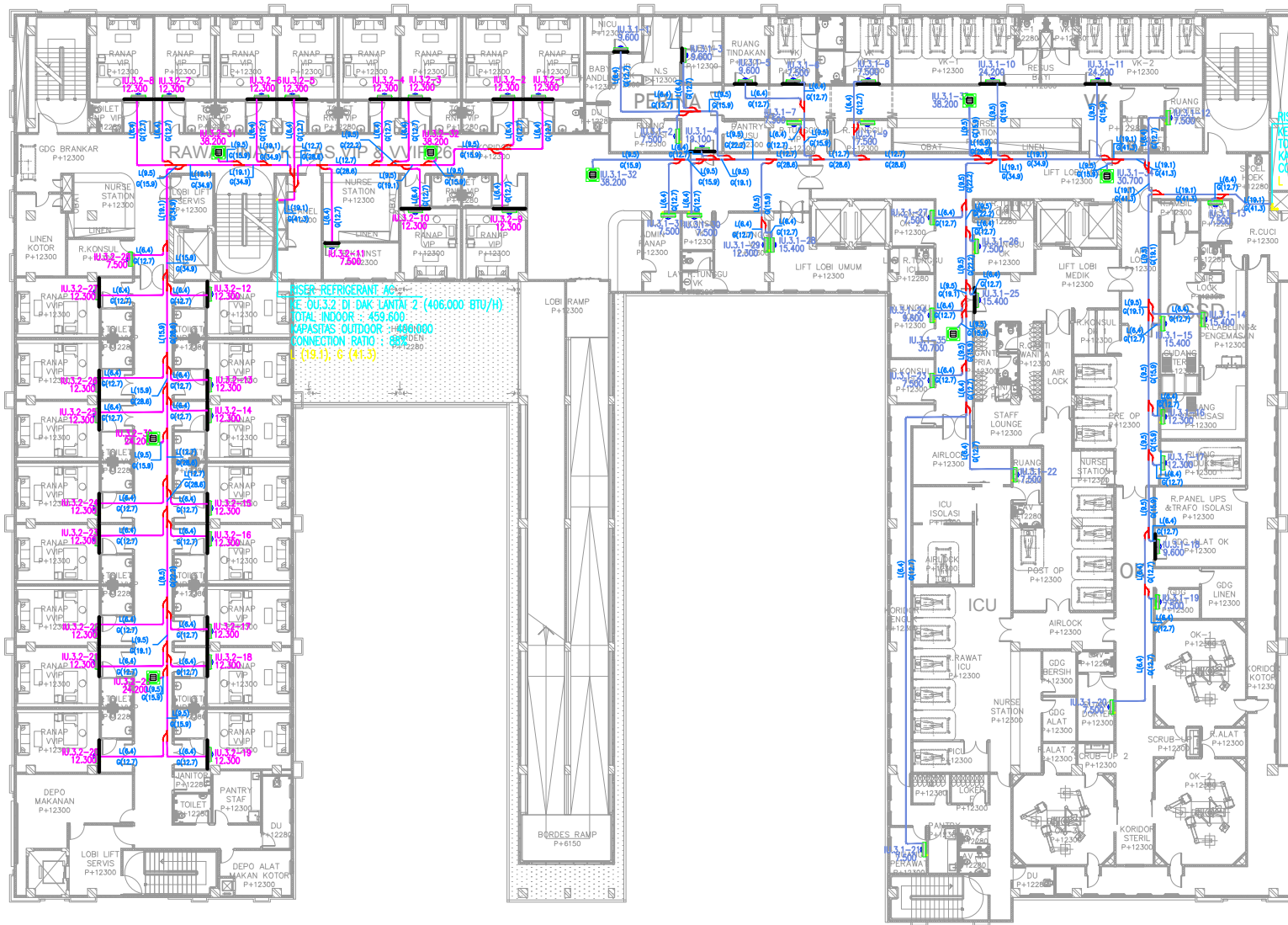
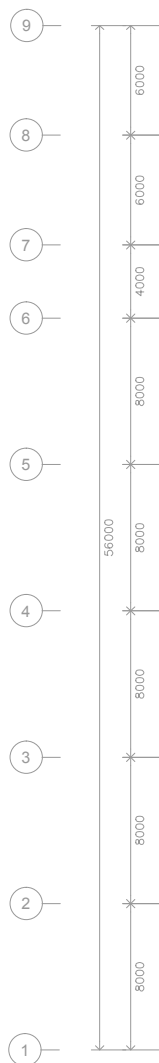
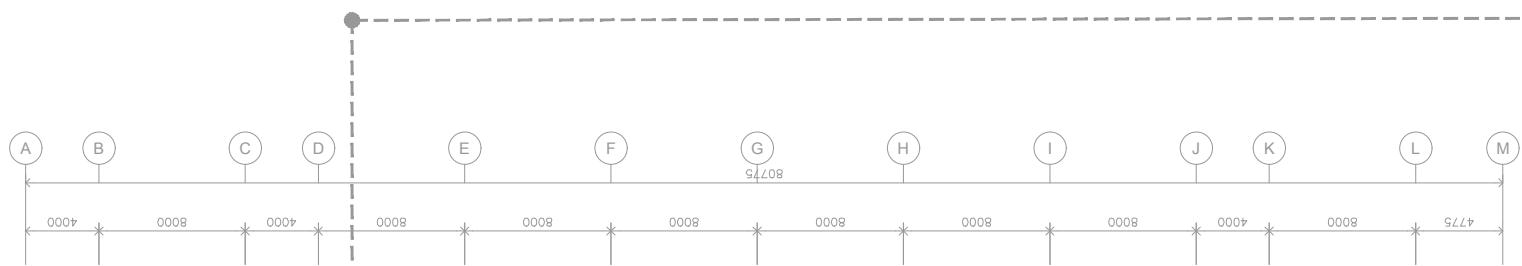




# DENAH LANTAI 3

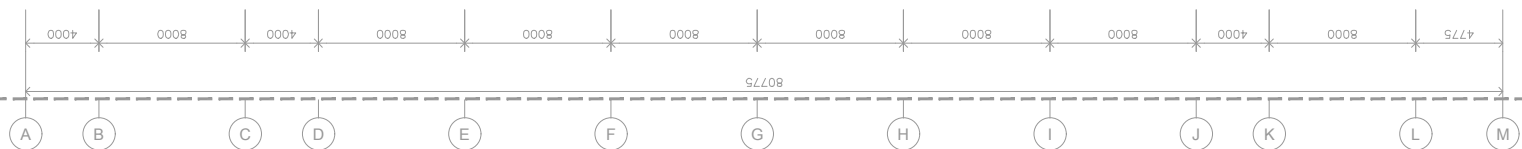
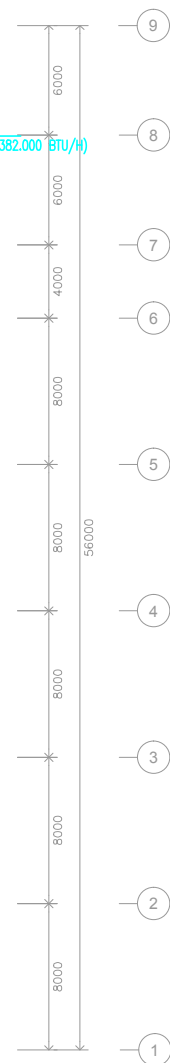
SKALA

1 : 250

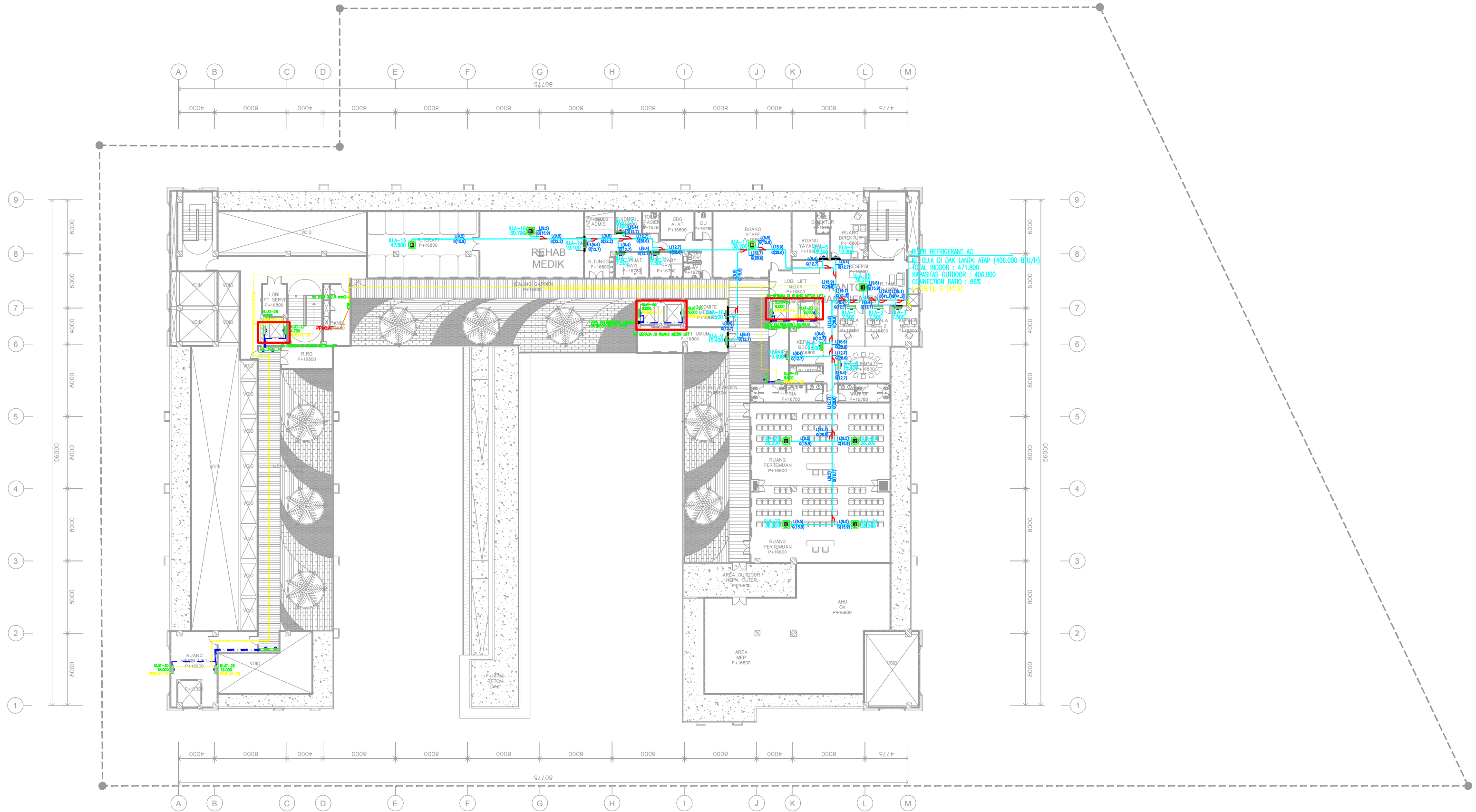


RISER REFRIGERANT AC  
 KE DU.3.2 DI DAK LANTAI 2 (406.000 BTU/H)  
 TOTAL INDOOR : 459.600  
 KAPASITAS OUTDOOR : 466.000  
 CONNECTION RATIO : 88%  
 (39.3) ; G (41.3)

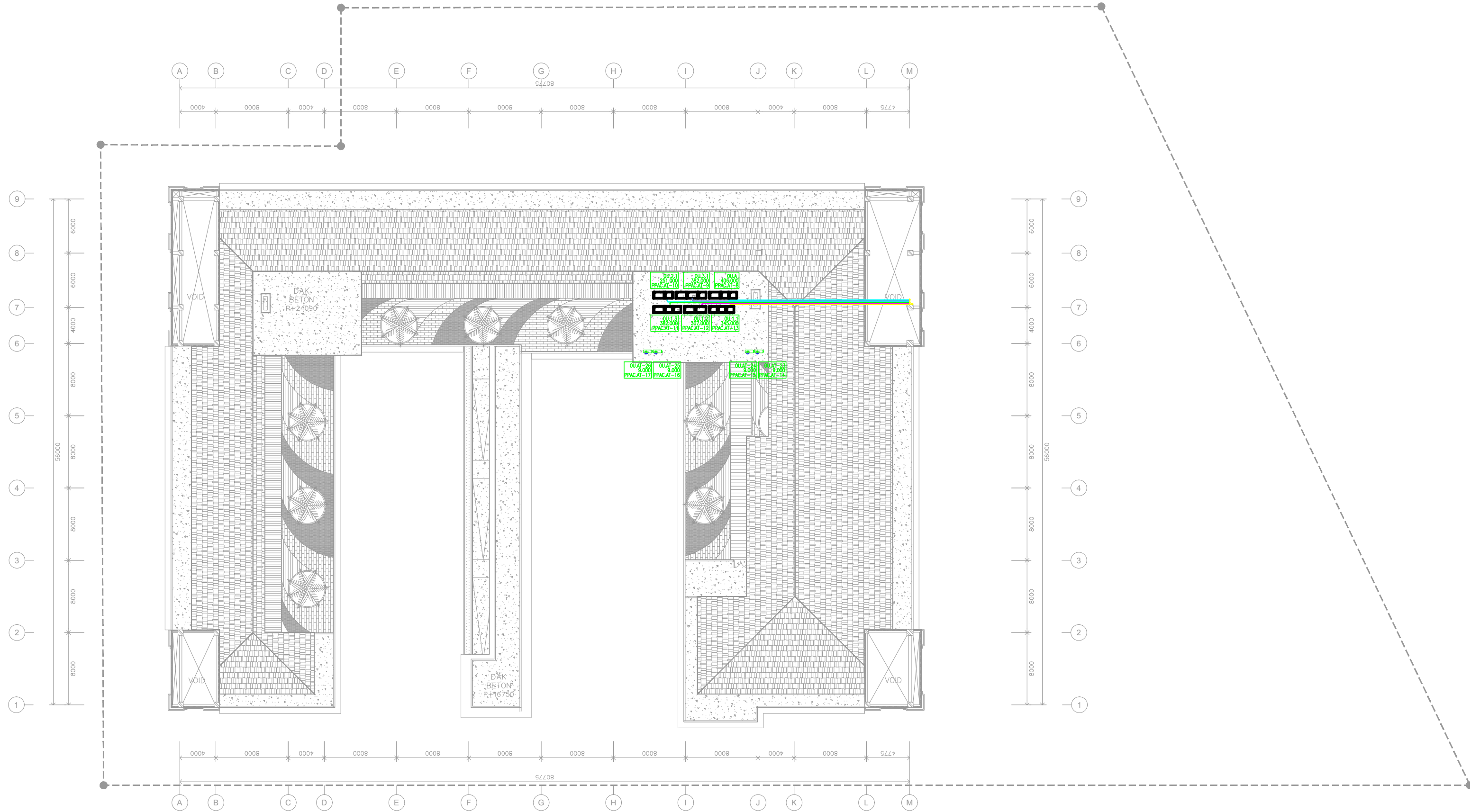
RISER REFRIGERANT AC  
 KE DU.3.1 DI DAK LANTAI ATAP (382.000 BTU/H)  
 TOTAL INDOOR : 438.500  
 KAPASITAS OUTDOOR : 382.000  
 CONNECTION RATIO : 87%  
 L (39.1) ; G (41.3)



DENAH LANTAI ATTIC  
SKALA 1 : 250



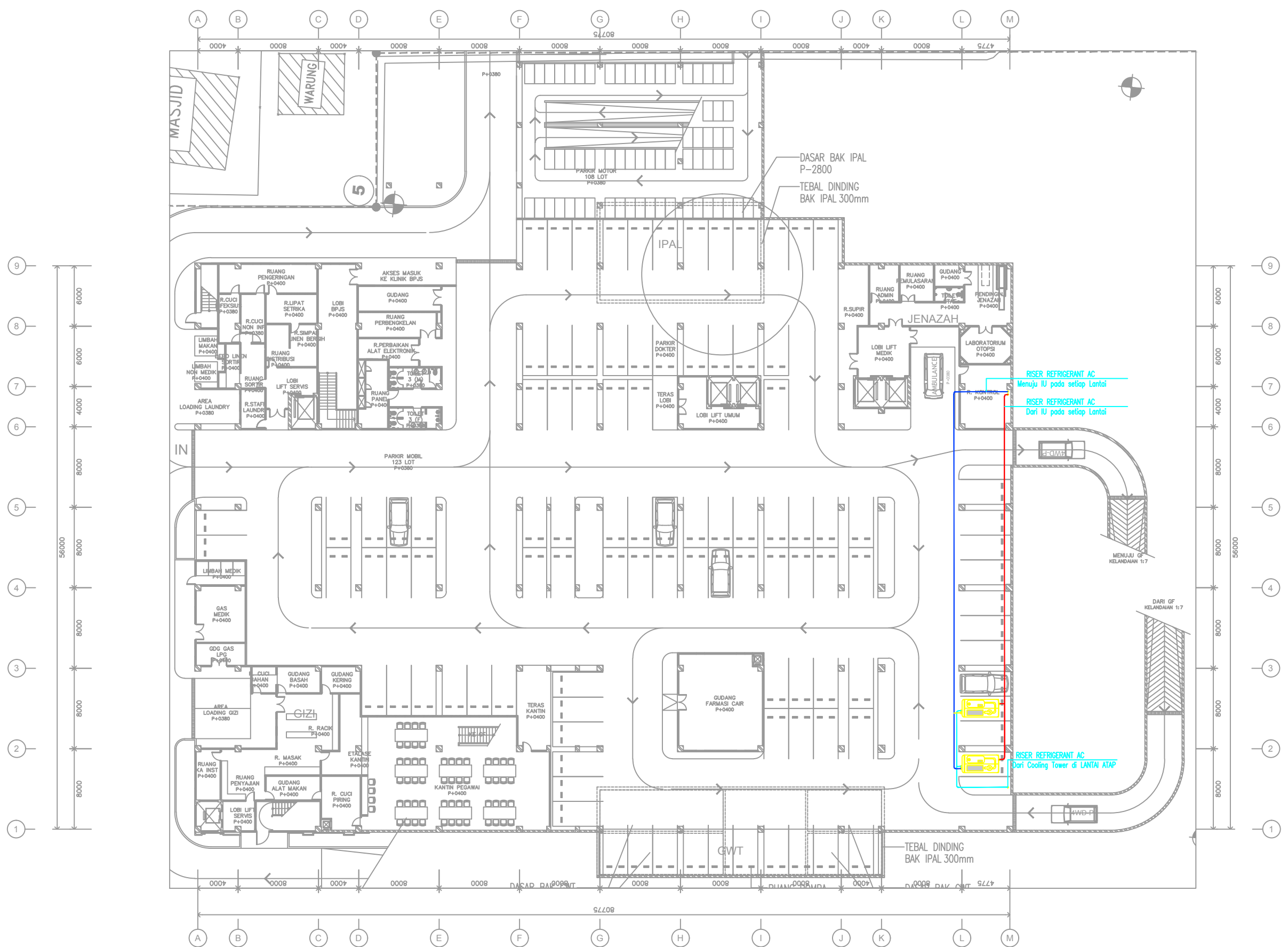

**DENAH LANTAI ATAP**  
 SKALA 1 : 250





# DENAH LANTAI SEMIBASEMENT

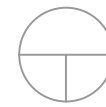
SKALA 1 : 250



RISER REFRIGERANT AC  
Menuju IU pada setiap Lantai

RISER REFRIGERANT AC  
Dari IU pada setiap Lantai

RISER REFRIGERANT AC  
Dari Cooling Tower di LANTAI ATAP



# DENAH LANTAI 1

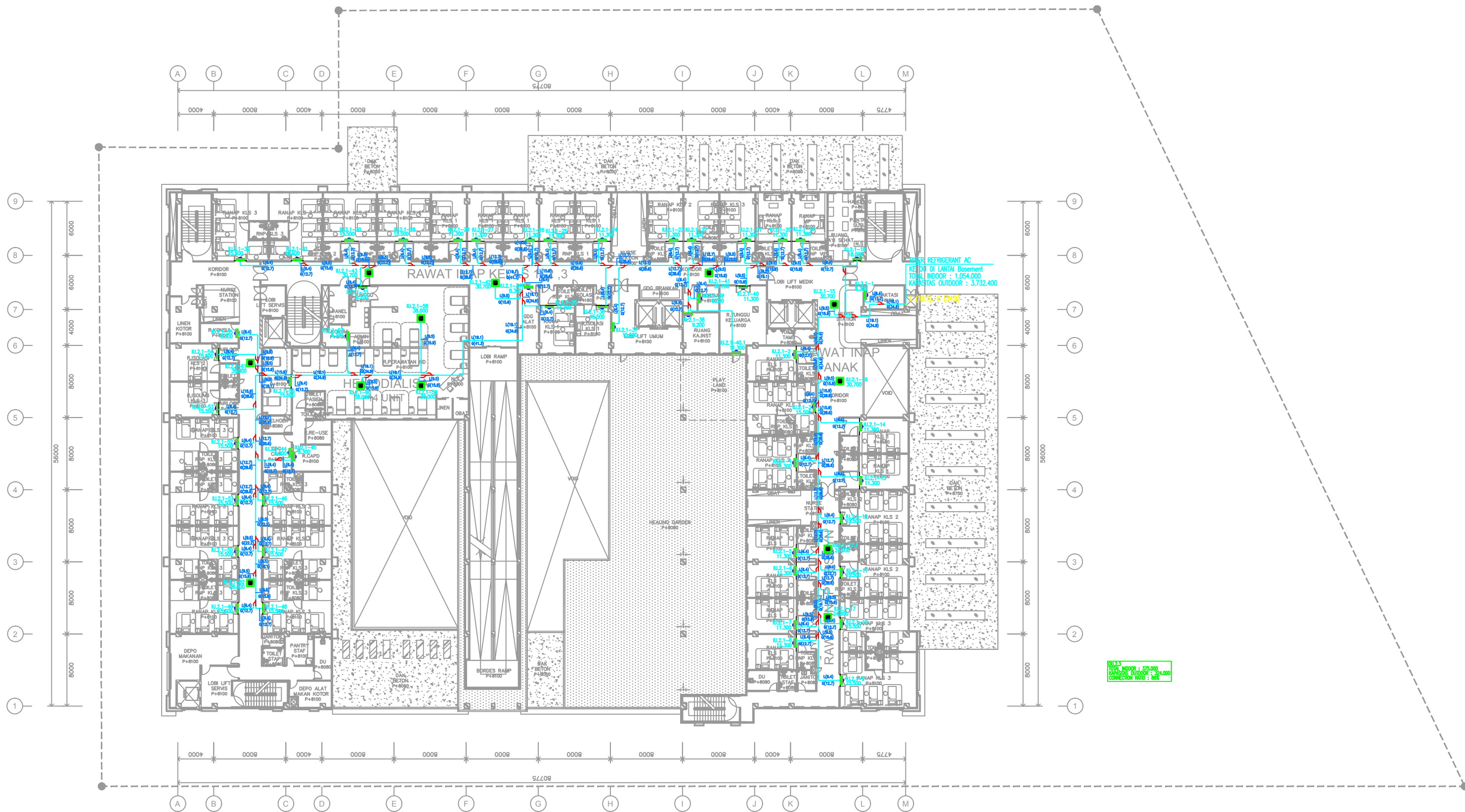
SKALA

1 : 250



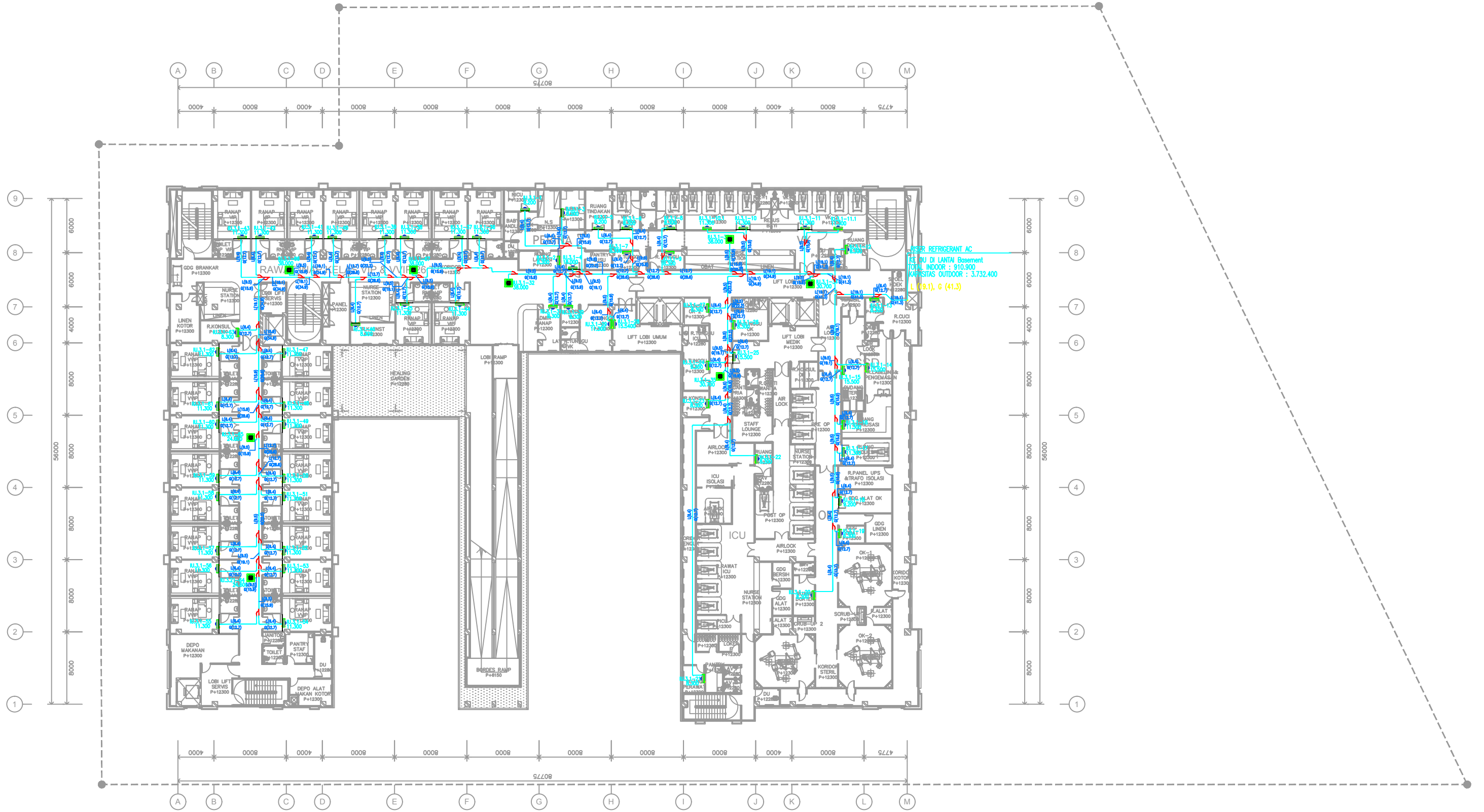
KONSER BERSEKUTU AC  
 KE: OU DI LANTAI Basement  
 TOTAL INDOOR : 1.311.500  
 KAPASITAS OUTDOOR : 3.732.890

**DENAH LANTAI 2**  
 SKALA 1 : 250





DENAH LANTAI 3  
SKALA 1 : 250







# DENAH LANTAI ATAP

SKALA

1 : 250

