

LAMPIRAN

Lampiran 1. Bumper Corolla KE 20



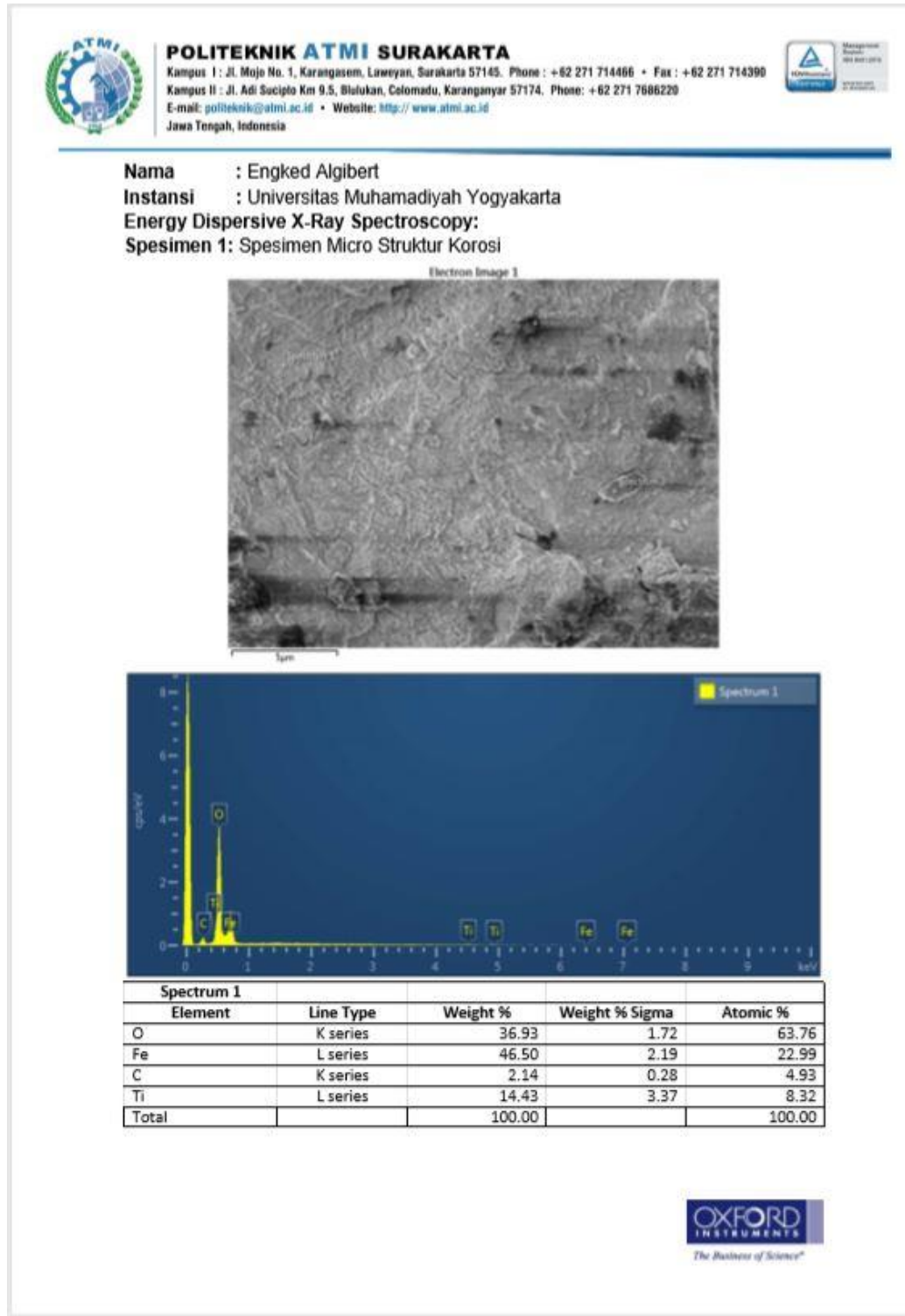


Lampiran 2 Bumper Corolla KE 20 Setelah dibersihkan





Lampiran 3 Hasil Pengujian SEM EDX



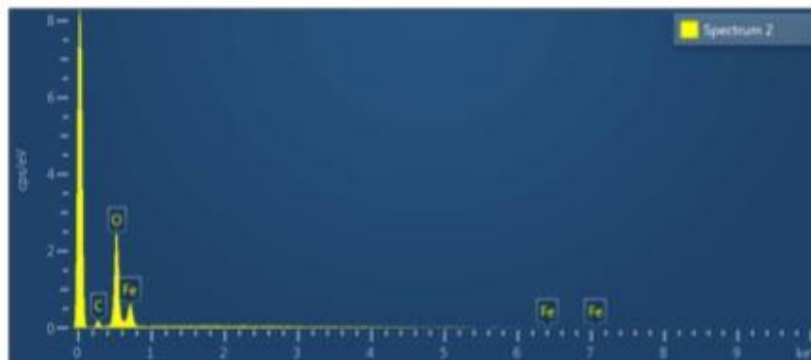

POLITEKNIK ATMI SURAKARTA

Kampus I : Jl. Mojo No. 1, Karangasem, Laweyan, Surakarta 57145. Phone : +62 271 714466 • Fax : +62 271 714390

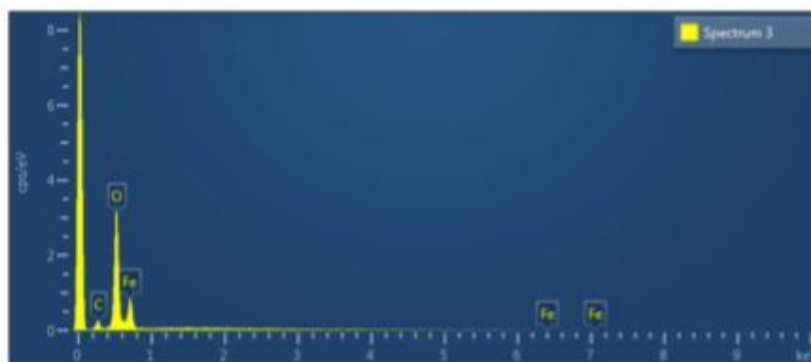
Kampus II : Jl. Adi Sucipto Km 9.5, Blukan, Colomadu, Karanganyar 57174. Phone: +62 271 7686220

 E-mail: politeknik@atmi.ac.id • Website: <http://www.atmi.ac.id>

Jawa Tengah, Indonesia



Spectrum 2				
Element	Line Type	Weight %	Weight % Sigma	Atomic %
O	K series	41.25	1.68	66.08
Fe	L series	54.59	1.82	25.05
C	K series	4.16	0.54	8.88
Total		100.00		100.00



Spectrum 3				
Element	Line Type	Weight %	Weight % Sigma	Atomic %
O	K series	40.17	1.07	65.15
Fe	L series	55.67	1.16	25.86
C	K series	4.16	0.38	8.99
Total		100.00		100.00

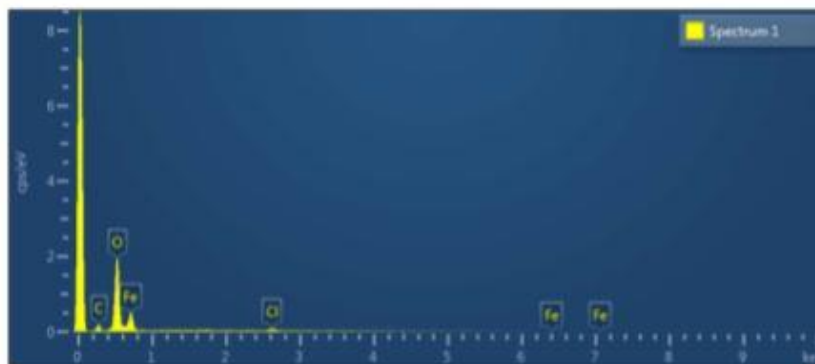
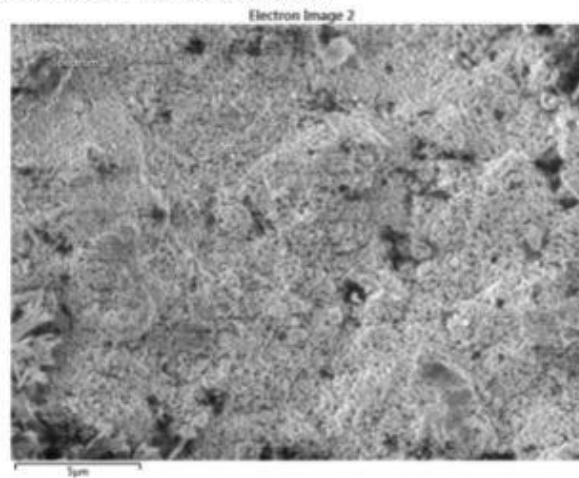


POLITEKNIK ATMI SURAKARTA

Kampus I : Jl. Mojo No. 1, Karangasem, Laweyan, Surakarta 57145. Phone : +62 271 714466 • Fax : +62 271 714390
 Kampus II : Jl. Adi Sucipto Km 9.5, Bluluk, Colomadu, Karanganyar 57174. Phone: +62 271 7686220
 E-mail: politeknik@atmi.ac.id • Website: <http://www.atmi.ac.id>
 Jawa Tengah, Indonesia



Spesimen 1: Spesimen Micro Struktur Korosi



Spectrum 1				
Element	Line Type	Weight %	Weight % Sigma	Atomic %
O	K series	39.78	1.15	62.90
Fe	L series	51.61	1.35	23.38
C	K series	5.44	0.49	11.47
Cl	K series	3.17	0.47	2.26
Total		100.00		100.00



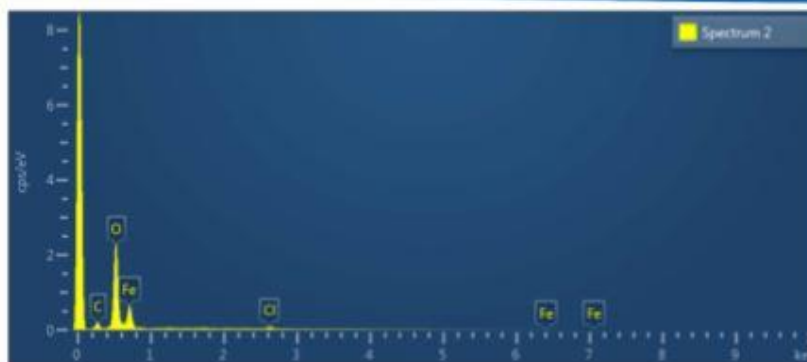
POLITEKNIK ATMI SURAKARTA

Kampus I : Jl. Mojo No. 1, Karangsem, Laweyan, Surakarta 57145. Phone : +62 271 714466 • Fax : +62 271 714390

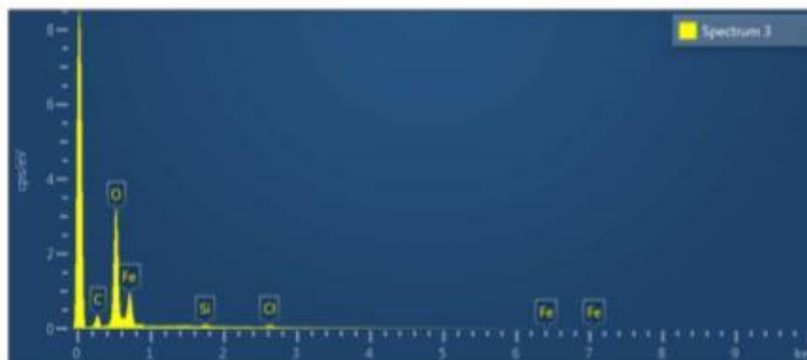
Kampus II : Jl. Adi Sucipto Km 9.5, Blalukan, Colomadu, Karanganyar 57174. Phone: +62 271 7686220

E-mail: politeknik@atmi.ac.id • Website: <http://www.atmi.ac.id>

Jawa Tengah, Indonesia



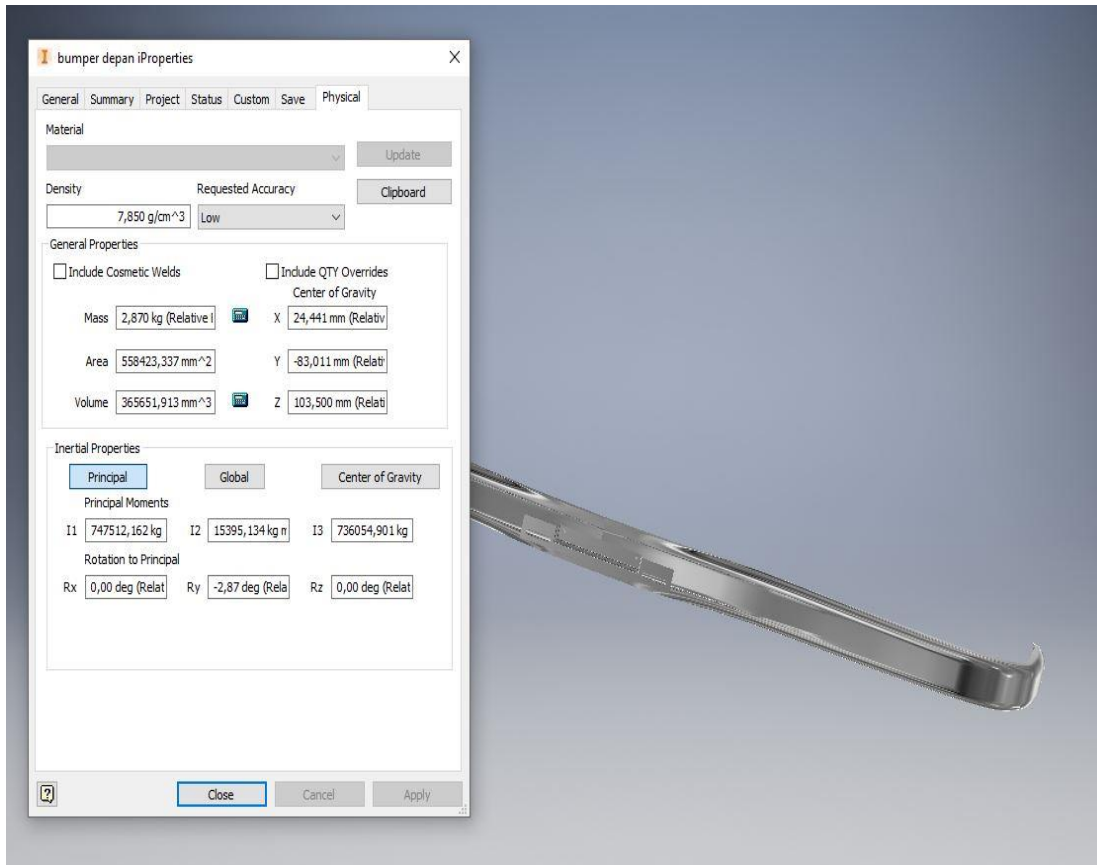
Spectrum 2				
Element	Line Type	Weight %	Weight % Sigma	Atomic %
O	K series	38.50	0.68	62.69
Fe	L series	54.22	0.79	25.29
C	K series	4.65	0.29	10.09
Cl	K series	2.63	0.26	1.93
Total		100.00		100.00

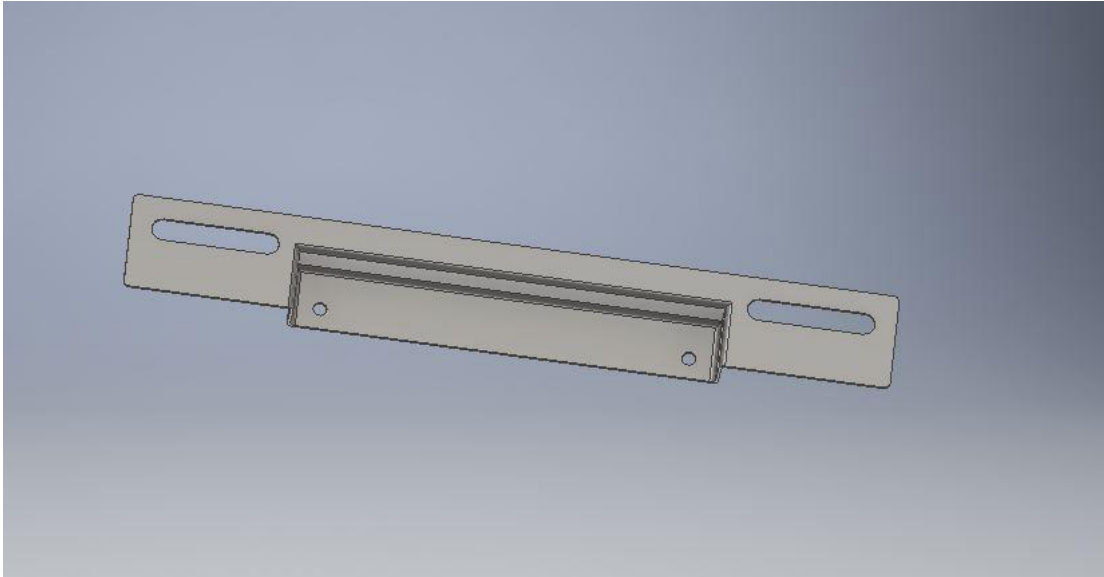


Spectrum 3				
Element	Line Type	Weight %	Weight % Sigma	Atomic %
O	K series	37.11	0.57	60.16
Fe	L series	54.64	0.67	25.38
C	K series	5.80	0.26	12.53
Cl	K series	1.70	0.19	1.24
Si	K series	0.75	0.11	0.69
Total		100.00		100.00

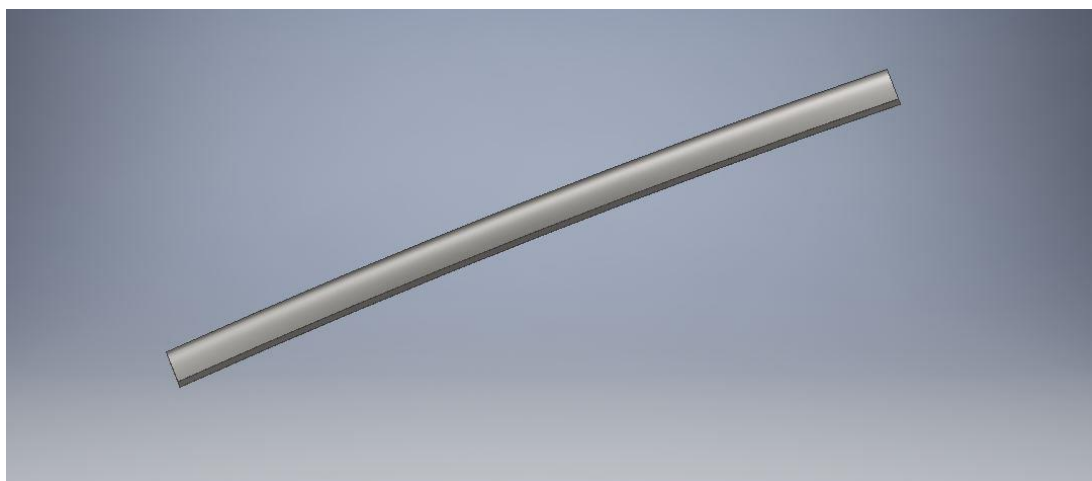
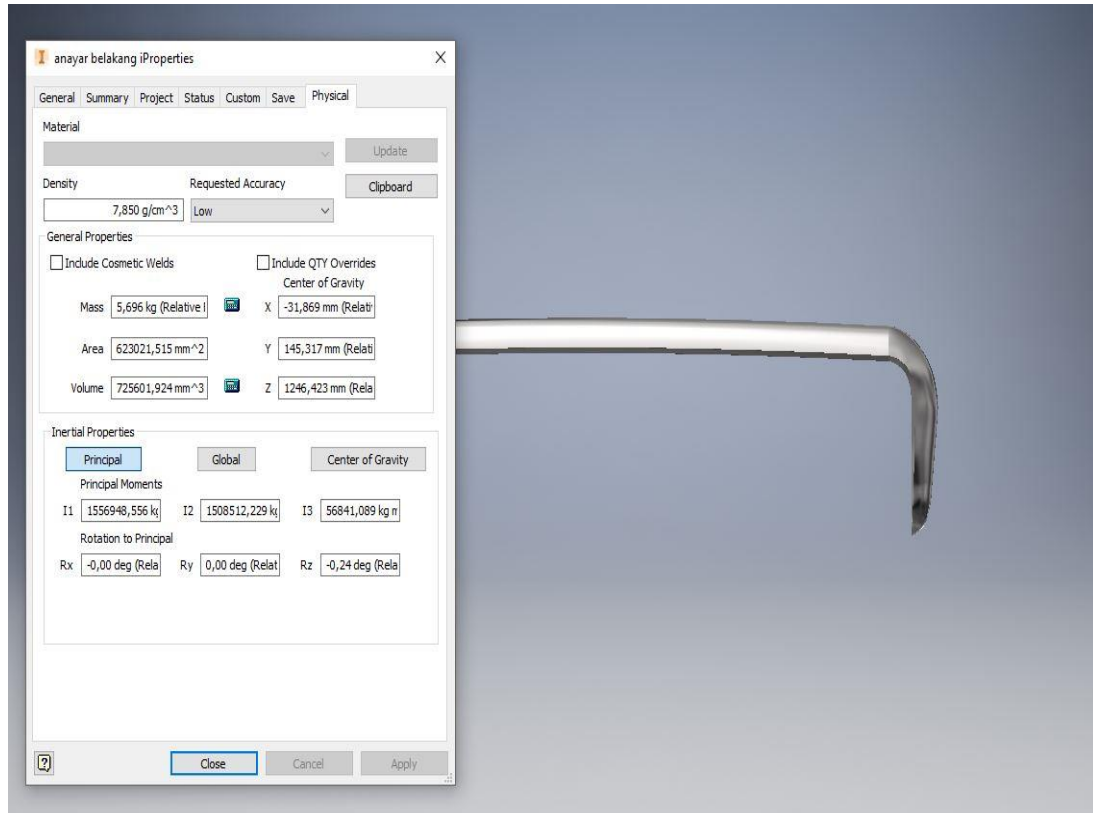
Lampiran 4 Desain bumper Corolla KE20

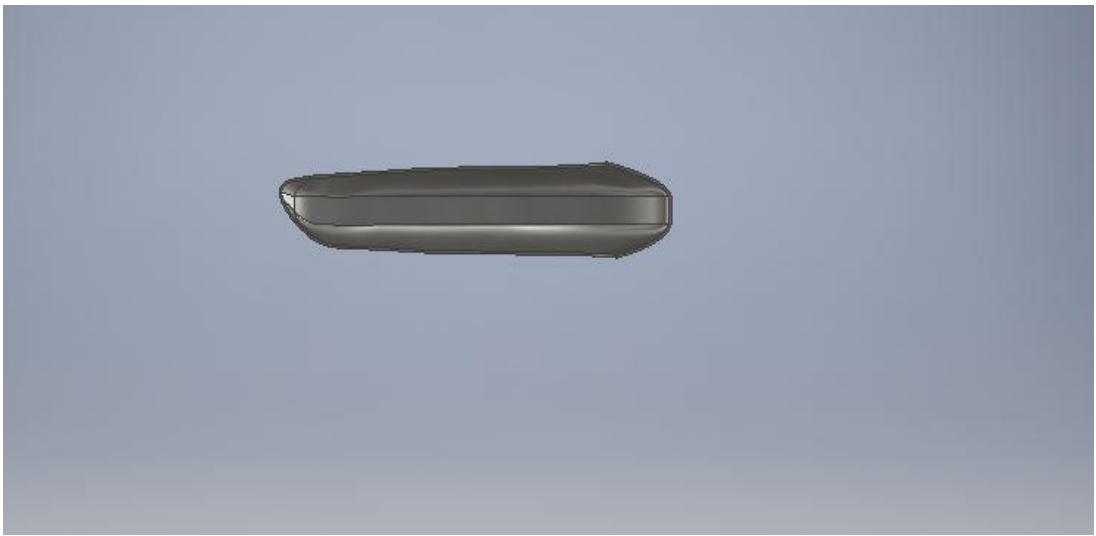
1. Bagian depan





2. Bagian Belakang





Lampiran 5 Berat bumper setelah dibersihkan

1. Bagian Depan



2. Bagian Belakang





