

LAMPIRAN

A. Data

Lampiran 1 Data penelitian

Tahun	Impor	Produksi	Konsumsi	Harga	LL	PDB
	Ton	Ton	Ton	Rp/Ton	Ha	Milyar Rp
1985	33.800	39.032.945	22.483.857	318.000	7.612.759	23.555.869
1986	27.765	39.726.761	23.112.371	343.000	7.774.203	24.311.588
1987	54.982	40.078.195	23.935.192	383.000	8.024.579	27.861.677
1988	32.730	41.676.170	24.467.346	466.000	8.112.883	29.458.838
1989	268.321	44.725.582	24.861.264	493.000	8.238.566	31.635.796
1990	49.577	45.178.751	24.960.588	519.000	8.229.686	33.931.814
1991	170.994	44.688.247	25.985.984	558.000	8.227.149	36.170.616
1992	611.697	48.240.009	27.011.380	604.000	8.393.290	31.991.621
1993	24.317	48.181.087	26.318.135	592.000	8.499.057	34.518.538
1994	633.048	46.641.524	26.746.856	660.000	8.439.305	37.121.192
1995	1.807.875	49.744.140	27.100.158	776.000	8.484.687	40.169.993
1996	2.149.758	51.101.508	24.596.228	885.000	8.519.110	43.378.324
1997	349.681	49.377.054	28.018.270	1.064.000	8.490.042	45.348.996
1998	2.895.118	49.236.692	28.441.147	2.099.000	8.582.655	39.396.158
1999	4.751.398	50.866.387	28.736.841	2.666.000	8.106.356	39.707.831
2000	1.355.666	51.898.852	28.544.118	2.424.000	7.787.339	41.661.484
2001	644.733	50.460.782	28.933.112	2.537.000	7.779.733	43.092.788
2002	1.805.380	51.489.694	29.323.956	2.826.000	7.748.848	44.668.059
2003	1.428.506	52.137.604	29.715.552	2.786.000	7.400.030	46.845.954
2004	236.867	54.088.468	30.109.500	2.851.000	7.696.161	49.248.805
2005	189.617	54.151.097	30.502.334	3.479.000	7.743.764	51.920.286
2006	438.108	54.454.937	30.898.438	4.197.000	7.791.290	54.767.382
2007	1.406.847	57.157.435	31.295.517	5.031.000	7.855.941	53.992.040
2008	289.689	60.325.925	31.695.462	5.288.000	7.991.464	61.763.353
2009	250.473	64.398.890	32.092.540	5.705.000	8.068.327	64.619.509
2010	687.582	66.469.394	32.488.380	6.755.000	8.002.552	68.641.331
2011	2.750.476	65.756.904	31.427.336	7.379.000	8.095.962	72.876.353
2012	1.810.372	69.056.126	31.805.398	8.614.000	8.127.264	77.270.834
2013	472.664	71.279.790	32.182.995	9.197.000	8.128.499	81.564.978
2014	844.163	70.840.465	32.555.485	9.730.000	8.111.593	85.648.666
2015	861.601	75.397.841	32.931.379	10.712.000	8.092.906	89.825.171

2016	1.283.178	76.011.744	33.306.423	11.189.000	8.187.733	94.346.323
2017	305.275	77.786.504	33.681.466	11.182.000	8.162.608	99.127.493
2018	2.253.824	56.537.774	33.475.936	12.054.480	7.105.145	104.253.163

Sumber Data: Badan Pusat Statistik (BPS) -Data Kemeterian Pertanian Indonesia

– Badan Ketahanan Pangan Indonesia

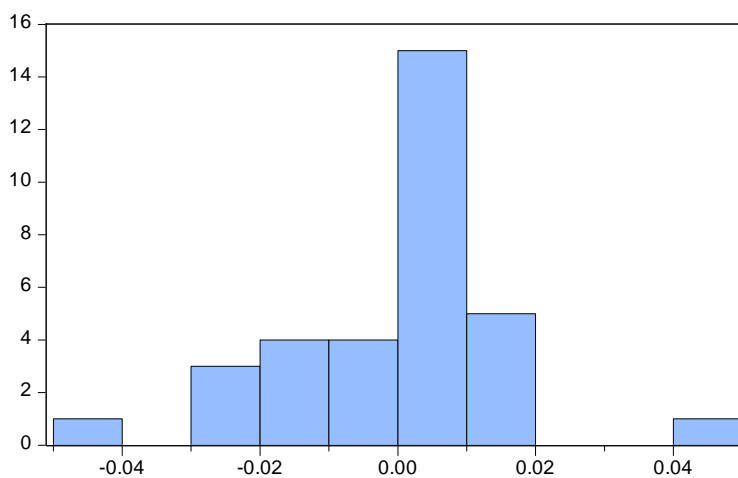
B. Hasil Olah Data *Eviews7*

Lampiran 2 Persamaan Model PAM

Dependent Variable: LOG(IMPOR)
 Method: Least Squares
 Date: 02/19/20 Time: 02:52
 Sample (adjusted): 1986 2018
 Included observations: 33 after adjustments

Variable	Coefficient	Std. Error	t-Statistic	Prob.
C	2.206188	2.497008	0.883533	0.3850
LOG(PRODUKSI)	0.377068	0.054951	6.861863	0.0000
LOG(KONSUMSI)	0.024718	0.125175	0.197470	0.8450
LOG(HARGA)	0.040713	0.014557	2.796795	0.0096
LOG(LL)	-0.004332	0.004165	-1.040023	0.3079
LOG(PDB)	-0.094706	0.032315	-2.930729	0.0070
LOG(IMPOR(-1))	0.551765	0.106277	5.191787	0.0000
R-squared	0.839459	Mean dependent var	15.90167	
Adjusted R-squared	0.802411	S.D. dependent var	0.041502	
S.E. of regression	0.018448	Akaike info criterion	-4.961862	
Sum squared resid	0.008849	Schwarz criterion	-4.644421	
Log likelihood	88.87073	Hannan-Quinn criter.	-4.855053	
F-statistic	22.65870	Durbin-Watson stat	1.850897	
Prob(F-statistic)	0.000000			

Lampiran 3 Uji Normalitas



Series: Residuals	
Sample 1986 2018	
Observations 33	
Mean	3.61e-15
Median	0.001681
Maximum	0.047565
Minimum	-0.041969
Std. Dev.	0.016629
Skewness	0.017483
Kurtosis	4.314792
Jarque-Bera	2.378615
Probability	0.304432

Lampiran 4

Uji Multikolinieritas Sebelum Menghilangkan Satu Variabel

Variance Inflation Factors
Date: 02/21/20 Time: 10:15
Sample: 1985 2018
Included observations: 34

Variable	Coefficient Variance	Uncentered VIF	Centered VIF
C	7.633125	348281.9	NA
LOG(PRODUKSI)	0.006310	91264.46	10.57522
LOG(KONSUMSI)	0.029154	392362.1	17.81372
LOG(HARGA)	0.000358	3513.069	23.52939
LOG(LL)	3.44E-05	250.4537	2.401161
LOG(PDB)	0.002164	30955.17	16.48957

Lampiran 5

Uji Multikolinieritas Sesudah Menghilangkan Satu Variabel

Variance Inflation Factors
Date: 02/21/20 Time: 10:35
Sample: 1985 2018
Included observations: 33

Variable	Coefficient Variance	Uncentered VIF	Centered VIF
C	6.371276	493166.3	NA
LOG(PRODUKSI)	0.003654	89752.15	9.780597
LOG(KONSUMSI)	0.010304	235459.9	9.502155
LOG(LL)	2.14E-05	266.0884	2.368024
LOG(PDB)	0.012284	240500.2	1.222789

Lampiran 6

Uji Autokorelasi

Breusch-Godfrey Serial Correlation LM Test:

F-statistic	0.567887	Prob. F(2,24)	0.5742
Obs*R-squared	1.491122	Prob. Chi-Square(2)	0.4745

Test Equation:
Dependent Variable: RESID
Method: Least Squares

Date: 02/19/20 Time: 02:55
 Sample: 1986 2018
 Included observations: 33
 Presample missing value lagged residuals set to zero.

Variable	Coefficient	Std. Error	t-Statistic	Prob.
C	-0.200824	2.637643	-0.076138	0.9399
LOG(PRODUKSI)	0.003324	0.056021	0.059341	0.9532
LOG(KONSUMSI)	-0.012477	0.128280	-0.097267	0.9233
LOG(HARGA)	0.003836	0.016649	0.230401	0.8197
LOG(LL)	-0.000444	0.004261	-0.104313	0.9178
LOG(PDB)	-0.007411	0.036393	-0.203642	0.8403
LOG(IMPOR(-1))	0.027469	0.129609	0.211940	0.8339
RESID(-1)	0.010417	0.247567	0.042076	0.9668
RESID(-2)	-0.230836	0.221653	-1.041430	0.3081
R-squared	0.045186	Mean dependent var		3.61E-15
Adjusted R-squared	-0.273086	S.D. dependent var		0.016629
S.E. of regression	0.018763	Akaike info criterion		-4.886888
Sum squared resid	0.008449	Schwarz criterion		-4.478750
Log likelihood	89.63366	Hannan-Quinn criter.		-4.749562
F-statistic	0.141972	Durbin-Watson stat		1.859422
Prob(F-statistic)	0.996192			

Lampiran 7 Uji Heterokedastisitas

Heteroskedasticity Test: White

F-statistic	1.002144	Prob. F(18,14)	0.5068
Obs*R-squared	18.57989	Prob. Chi-Square(18)	0.4181
Scaled explained SS	19.11562	Prob. Chi-Square(18)	0.3847

Test Equation:

Dependent Variable: RESID^2

Method: Least Squares

Date: 02/19/20 Time: 02:53

Sample: 1986 2018

Included observations: 33

Collinear test regressors dropped from specification

Variable	Coefficient	Std. Error	t-Statistic	Prob.
C	-3.043633	10.10752	-0.301125	0.7677
LOG(PRODUKSI)	0.484104	1.253292	0.386266	0.7051
(LOG(PRODUKSI))^2	-0.013565	0.040116	-0.338153	0.7403
(LOG(PRODUKSI))*(LOG(KONSUMSI))	-0.002401	0.004942	-0.485959	0.6345
(LOG(PRODUKSI))*(LOG(HARGA))	0.001550	0.012434	0.124655	0.9026
(LOG(PRODUKSI))*(LOG(LL))	0.005412	0.003890	1.391437	0.1858
(LOG(PRODUKSI))*(LOG(PDB))	-0.002739	0.002841	-0.964124	0.3513
(LOG(PRODUKSI))*(LOG(IMPOR(-1)))	-0.000435	0.009667	-0.044953	0.9648

(LOG(KONSUMSI))*(LOG(HARGA))	0.005845	0.007507	0.778644	0.4492
(LOG(KONSUMSI))*(LOG(LL))	-0.002918	0.006256	-0.466468	0.6481
LOG(HARGA)	-0.246356	0.255737	-0.963315	0.3517
(LOG(HARGA))^2	-0.001634	0.002051	-0.796807	0.4389
(LOG(HARGA))*(LOG(LL))	-0.000561	0.000918	-0.611388	0.5507
(LOG(HARGA))*(LOG(PDB))	0.003541	0.003842	0.921816	0.3722
(LOG(HARGA))*(LOG(IMPOR(-1)))	0.006947	0.013972	0.497175	0.6268
LOG(LL)	0.071795	0.110711	0.648487	0.5272
(LOG(LL))^2	2.93E-05	0.000206	0.142185	0.8890
(LOG(LL))*(LOG(PDB))	-0.000203	0.002123	-0.095449	0.9253
(LOG(LL))*(LOG(IMPOR(-1)))	-0.006733	0.007081	-0.950740	0.3579
R-squared	0.563027	Mean dependent var	0.000268	
Adjusted R-squared	0.001205	S.D. dependent var	0.000496	
S.E. of regression	0.000495	Akaike info criterion	-12.08806	
Sum squared resid	3.44E-06	Schwarz criterion	-11.22643	
Log likelihood	218.4530	Hannan-Quinn criter.	-11.79815	
F-statistic	1.002144	Durbin-Watson stat	2.533196	
Prob(F-statistic)	0.506780			

Lampiran 8 Koefisien Jangka Panjang dan Jangka Pendek

Variabel Bebas	Koefisien Jangka Pendek	Koefisien Jangka Panjang	Koefisien Penyesuaian
C	2.206188	7.419070	1 – 0,551765 = 0,448235
LOG(PRODUKSI)	0.377068	0.437023	
LOG(KONSUMSI)	0.024718	0.154271	
LOG(HARGA)	0.040713	0.081169	
LOG(LL)	-0.004332	-0.011478	
LOG(PDB)	-0.094706	-0.051257	
LOG(IMPOR(-1))	0.551765		