

LAMPIRAN

Lampiran 1. Data Penelitian

Tahun	Ekspor (USD)	Produksi (USD)	GDP internasional (USD)	HKD (USD/Kg)	HKoD (USD/Kg)	KURS
1985	70.715.250	76.045.500	309.488.028.133	2,25	2,65	1.130
1986	100.840.320	104.621.760	300.758.100.107	2,07	3,24	1.641
1987	135.006.300	165.656.700	272.972.974.765	1,99	1,88	1.650
1988	204.042.420	264.185.550	312.353.631.208	1,58	1,84	1.729
1989	253.342.340	369.100.060	347.768.051.312	1,24	1,39	1.795
1990	399.881.500	475.438.980	360.857.912.566	1,27	0,90	1.901
1991	486.476.950	585.911.650	383.373.318.084	1,2	0,98	1.992
1992	598.403.400	704.299.800	426.915.712.711	1,1	0,88	2.062
1993	782.492.580	882.561.780	444.731.282.437	1,12	0,99	2.110
1994	792.906.240	926.034.830	564.324.670.006	1,4	2,58	2.200
1995	829.255.150	1.082.274.300	734.547.898.221	1,43	2,63	2.308
1996	1.149.374.480	1.331.436.440	863.746.717.504	1,46	1,62	2.383
1997	553.173.920	686.855.520	961.603.952.952	1,62	1,63	4.650
1998	870.498.200	1.167.210.200	1.029.043.097.554	1,68	1,63	8.025
1999	1.116.864.840	1.243.483.500	1.093.997.267.271	1,14	1,32	7.160
2000	1.132.314.960	1.151.149.140	1.211.346.869.605	0,91	0,96	9.595
2001	951.602.080	1.299.065.680	1.339.395.718.865	1,07	0,75	10.400
2002	1.187.333.550	1.456.445.250	1.470.550.015.082	1,78	0,67	8.940
2003	865.723.540	1.691.134.720	1.660.287.965.663	1,75	0,80	8.465
2004	899.769.520	1.687.757.760	1.955.347.004.963	1,55	0,85	9.290
2005	1.172.208.240	1.887.046.560	2.285.965.892.361	1,54	1,13	9.830
2006	1.579.279.920	1.985.015.880	2.752.131.773.355	1,59	1,41	9.020
2007	1.258.867.500	1.850.015.000	3.421.229.126.745	1,95	1,90	9.419
2008	1.361.120.640	2.121.488.160	3.730.027.830.672	2,58	2,11	10.950
2009	1.505.859.310	2.177.778.270	3.397.791.053.070	2,89	1,88	9.400
2010	1.437.519.200	2.178.586.800	3.396.354.075.664	3,13	1,88	8.991
2011	984.616.800	1.709.354.400	3.744.408.602.684	2,98	2,99	9.068
2012	903.580.990	1.725.395.290	3.527.344.944.140	2,39	2,79	9.670
2013	1.267.106.220	2.205.837.720	3.732.743.446.219	2,44	2,19	12.189
2014	1.287.810.570	2.265.367.540	3.883.920.155.292	3,06	2,70	12.440
2015	1.007.710.580	1.791.859.620	3.360.549.973.889	3,14	2,39	13.795
2016	1.186.786.710	1.968.613.010	3.466.790.065.012	2,89	2,43	13.436
2017	1.089.481.600	2.113.219.150	3.656.749.414.477	2,03	2,53	13.548
2018	1.701.920.140	1.846.820.630	3.947.620.162.503	2,11	2,31	14.481

Data GDP 5 Negara Terbesar Tujuan Ekspor Kakao Indonesia

Tahun	Malaysia (USD)	Amerika (USD)	Jerman (USD)	China (USD)	Belanda(USD)
1984	33.943.505.718	4.037.613.000.000	725.111.123.772	259.946.510.957	143.912.664.080
1985	31.200.161.095	4.338.979.000.000	732.534.886.726	309.488.028.133	143.845.822.917
1986	27.734.562.640	4.579.631.000.000	1.046.259.375.124	300.758.100.107	200.862.095.881
1987	32.181.695.507	4.855.215.000.000	1.298.176.105.441	272.972.974.765	245.046.310.923
1988	35.271.880.250	5.236.438.000.000	1.401.233.225.526	312.353.631.208	261.910.508.306
1989	38.848.567.631	5.641.580.000.000	1.398.967.436.284	347.768.051.312	258.336.705.601
1990	44.024.178.343	5.963.144.000.000	1.771.671.207.360	360.857.912.566	318.330.511.921
1991	49.143.148.094	6.158.129.000.000	1.868.945.197.407	383.373.318.084	327.500.328.265
1992	59.167.550.163	6.520.327.000.000	2.131.571.696.932	426.915.712.711	362.962.871.805
1993	66.894.837.030	6.858.559.000.000	2.071.323.790.370	444.731.282.437	353.550.170.028
1994	74.478.356.958	7.287.236.000.000	2.205.074.123.177	564.324.670.006	379.130.260.201
1995	88.705.342.903	7.639.749.000.000	2.585.792.275.147	734.547.898.221	452.301.674.444
1996	100.855.393.910	8.073.122.000.000	2.497.244.606.187	863.746.717.504	450.490.196.078
1997	100.005.323.302	8.577.554.463.000	2.211.989.623.280	961.603.952.952	416.812.740.005
1998	72.167.498.981	9.062.818.211.000	2.238.990.774.703	1.029.043.097.554	438.008.220.395
1999	79.148.421.053	9.630.664.202.000	2.194.204.133.816	1.093.997.267.271	446.898.572.342
2000	93.789.736.842	10.252.345.464.000	1.943.145.384.190	1.211.346.869.605	416.442.786.070
2001	92.783.947.368	10.581.821.399.000	1.944.107.382.550	1.339.395.718.865	431.213.422.819
2002	100.845.526.316	10.936.419.054.000	2.068.624.129.494	1.470.550.015.082	471.613.965.744
2003	110.202.368.421	11.458.243.878.000	2.496.128.668.172	1.660.287.965.663	578.792.325.056
2004	124.749.473.684	12.213.729.147.000	2.809.187.981.127	1.955.347.004.963	657.171.591.756
2005	143.534.102.611	13.036.640.229.000	2.845.802.760.851	2.285.965.892.361	685.092.650.168
2006	162.691.238.209	13.814.611.414.000	2.992.196.713.085	2.752.131.773.355	733.340.860.620
2007	193.547.824.063	14.451.858.650.000	3.421.229.126.745	3.550.342.425.238	847.481.522.037
2008	230.813.897.716	14.712.844.084.000	3.730.027.830.672	4.594.306.848.763	947.997.656.364
2009	202.257.625.195	14.448.933.025.000	3.397.791.053.070	5.101.702.432.883	868.077.243.679
2010	255.016.609.233	14.992.052.727.000	3.396.354.075.664	6.087.164.527.421	846.554.894.931
2011	297.951.960.784	15.542.581.104.000	3.744.408.602.684	7.551.500.425.598	904.085.980.796
2012	314.443.149.443	16.197.007.349.000	3.527.344.944.140	8.532.230.724.142	838.971.306.991
2013	323.277.158.907	16.784.849.190.000	3.732.743.446.219	9.570.405.758.740	876.923.518.850
2014	338.061.963.396	17.521.746.534.000	3.883.920.155.292	10.438.529.153.238	890.981.311.078
2015	301.354.756.113	18.219.297.584.000	3.360.549.973.889	11.015.542.352.469	765.264.949.781
2016	301.255.454.041	18.707.188.235.000	3.466.790.065.012	11.137.945.669.351	783.528.181.705
2017	318.958.236.443	19.485.393.853.000	3.656.749.414.477	12.143.491.448.186	831.809.944.961
2018	358.581.943.446	20.544.343.456.937	3.947.620.162.503	13.608.151.864.638	913.658.465.709

Lampiran 2. Hasil Uji Stasioner

1. Ekspor Kakao Indonesia

Null Hypothesis: D(LEKSPOR) has a unit root		
Exogenous: Constant		
Lag Length: 0 (Automatic - based on SIC, maxlag=8)		
	t-Statistic	Prob.*
Augmented Dickey-Fuller test statistic	-4.380846	0.0016
Test critical values:	1% level	-3.653730
	5% level	-2.957110
	10% level	-2.617434
*MacKinnon (1996) one-sided p-values.		

2. Jumlah Produksi Kakao Indonesia

Null Hypothesis: D(LJP) has a unit root		
Exogenous: Constant		
Lag Length: 0 (Automatic - based on SIC, maxlag=8)		
	t-Statistic	Prob.*
Augmented Dickey-Fuller test statistic	-6.684100	0.0000
Test critical values:	1% level	-3.653730
	5% level	-2.957110
	10% level	-2.617434
*MacKinnon (1996) one-sided p-values.		

3. GDP Internasional

Null Hypothesis: D(LGDPIN) has a unit root		
Exogenous: Constant		
Lag Length: 0 (Automatic - based on SIC, maxlag=8)		
	t-Statistic	Prob.*
Augmented Dickey-Fuller test statistic	-4.931427	0.0004
Test critical values:	1% level	-3.653730
	5% level	-2.957110
	10% level	-2.617434
*MacKinnon (1996) one-sided p-values.		

4. Harga Kakao Dunia

Null Hypothesis: D(LHKD) has a unit root		
Exogenous: Constant		
Lag Length: 0 (Automatic - based on SIC, maxlag=8)		
	t-Statistic	Prob.*
Augmented Dickey-Fuller test statistic	-6.927075	0.0000
Test critical values:	1% level	-3.653730
	5% level	-2.957110
	10% level	-2.617434
*Mackinnon (1996) one-sided p-values.		

5. Harga Kopi Dunia

Null Hypothesis: D(LHKOD) has a unit root		
Exogenous: Constant		
Lag Length: 0 (Automatic - based on SIC, maxlag=8)		
	t-Statistic	Prob.*
Augmented Dickey-Fuller test statistic	-5.478174	0.0001
Test critical values:	1% level	-5.478174
	5% level	-2.957110
	10% level	-2.617434
*Mackinnon (1996) one-sided p-values.		

6. Kurs

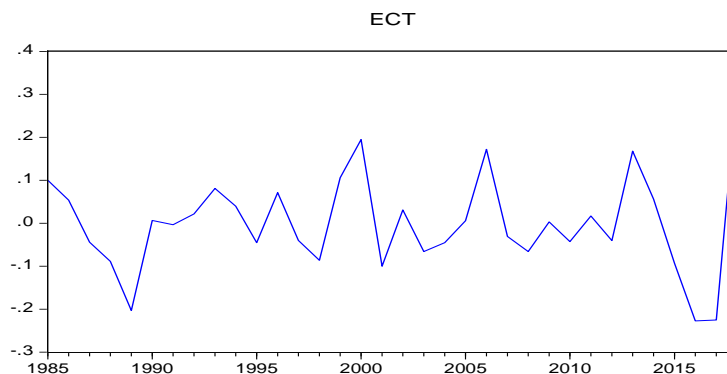
Null Hypothesis: D(LKURS) has a unit root		
Exogenous: Constant		
Lag Length: 0 (Automatic - based on SIC, maxlag=8)		
	t-Statistic	Prob.*
Augmented Dickey-Fuller test statistic	-4.888033	0.0004
Test critical values:	1% level	-3.653730
	5% level	-2.957110
	10% level	-2.617434
*Mackinnon (1996) one-sided p-values.		

Lampiran 3. Hasil Uji Jangka Panjang

Dependent Variable: LOG(EKSPOR)				
Method: Least Squares				
Date: 02/12/20 Time: 18:31				
Sample: 1985 2018				
Included observations: 34				
Variable	Coefficient	Std. Error	t-Statistic	Prob.
C	-0.278403	2.327463	-0.119617	0.0056
LOG(JP)	0.976572	0.053289	1.320601	0.0000
LOG(GDPIN)	0.629075	0.091533	1.299140	0.0117
LOG(HKD)	0.770139	0.227736	2.064403	0.0084
LOG(HKOD)	0.990992	0.226855	4.368386	0.0002
LOG(KURS)	-0.006450	0.076041	-0.084825	0.9330
R-squared	0.980631	Mean dependent var	12.46889	
Adjusted R-squared	0.977172	S.D. dependent var	0.828756	
S.E. of regression	0.125216	Akaike info criterion	-1.158765	
Sum squared resid	0.439015	Schwarz criterion	-0.889407	
Log likelihood	25.69900	Hannan-Quinn criter.	-1.066906	
F-statistic	283.5191	Durbin-Watson stat	1.709938	
Prob(F-statistic)	0.000000			

Lampiran 4. Hasil Uji Kointegrasi

Null Hypothesis: ECT has a unit root		
Exogenous: Constant		
Lag Length: 4 (Automatic - based on SIC, maxlag=8)		
	t-Statistic	Prob.*
Augmented Dickey-Fuller test statistic	-3.993587	0.0046
Test critical values:	1% level	-3.679322
	5% level	-2.967767
	10% level	-2.622989
*MacKinnon (1996) one-sided p-values.		



Lampiran 5. Hasil Uji Jangka Pendek

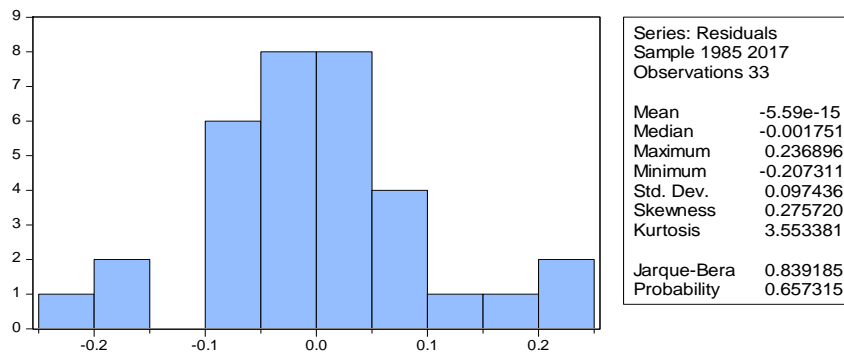
Dependent Variable: D(LOG(EKSPOR))				
Method: Least Squares				
Date: 02/12/20 Time: 18:49				
Sample (adjusted): 1986 2018				
Included observations: 33 after adjustments				
Variable	Coefficient	Std. Error	t-Statistic	Prob.
C	0.023698	0.029288	0.809139	0.4258
D(LOG(JP))	0.632056	0.138654	4.558520	0.0001
D(LOG(GDPIN))	0.005891	0.232598	0.025329	0.9800
D(LOG(HKD))	0.182011	0.208813	0.871645	0.0214
D(LOG((HKOD))	0.952231	0.230290	4.134917	0.0003
D(LOG(KURS))	-0.013072	0.119901	-0.109027	0.9140
ECT(-1)	-0.963906	0.204335	-4.717295	0.0001
R-squared	0.724008	Mean dependent var	0.086581	
Adjusted R-squared	0.660317	S.D. dependent var	0.194553	
S.E. of regression	0.113390	Akaike info criterion	-1.330139	
Sum squared resid	0.334288	Schwarz criterion	-1.012699	
Log likelihood	28.94730	Hannan-Quinn criter.	-1.223330	
F-statistic	11.36758	Durbin-Watson stat	1.663770	
Prob(F-statistic)	0.000003			

Lampiran 6. Hasil Uji Asumsi Klasik

1. Uji Autokorelasi

Breusch-Godfrey Serial Correlation LM Test:			
F-statistic	0.622063	Prob. F(2,25)	0.5449
Obs*R-squared	1.564394	Prob. Chi-Square(2)	0.4574

2. Uji Normalitas



3. Uji Multikolinearitas

Variance Inflation Factors			
Date: 02/14/20 Time: 14:41			
Sample: 1985 2018			
Included observations: 33			
Variable	Coefficient Variance	Uncentered VIF	Centered VIF
LOG(JP)	0.002192	1056.446	5.527483
LOG(GDPIN)	0.000468	2011.183	1.864333
LOG(HKD)	0.029304	95.04979	1.910878
LOG(HKOD)	0.027050	79.43778	2.877587
LOG(KURS)	0.003539	770.9581	6.969057
C	0.579412	1699.313	NA

4. Uji Heteroskedasitas

Heteroskedasticity Test: Breusch-Pagan-Godfrey			
F-statistic	1.715238	Prob. F(5,27)	0.1651
Obs*R-squared	7.955160	Prob. Chi-Square(5)	0.1587
Scaled explained SS	6.798831	Prob. Chi-Square(5)	0.2360



UMY
PERPUSTAKAAN

PERPUSTAKAAN
UNIVERSITAS MUHAMMADIYAH YOGYAKARTA
Terakreditasi "A" (Perpustakaan Nasional RI No: 29/1/ee/XII.2014)

Perpustakaan Universitas Muhammadiyah Yogyakarta menyatakan bahwa Skripsi atas:

Nama : Adimas Rois Adnan
NIM : 20160430162
Prodi : Ekonomi/FEB
Judul : ANALISIS FAKTOR-FAKTOR YANG MEMPENGARUHI
EKSPOR KAKAO INDONESIA TAHUN 1985-2018 DENGAN
PENDEKATAN *ERROR CORRECTION MODEL (ECM)*

Dosen Pembimbing : Dr. Lilies Setiartiti, S.E., M.Si

Telah dilakukan tes Turnitin filter 1%, dengan indeks similaritasnya sebesar 12%.
Semoga surat keterangan ini dapat digunakan sebagaimana mestinya.

Mengetahui
Ka. Ur. Pengelolaan

Laela Niswatin, S.I.Pust

Yogyakarta, 2/25/2020
yang melaksanakan pengecekan

M. Burhanuddin Irsyadi, S.P.