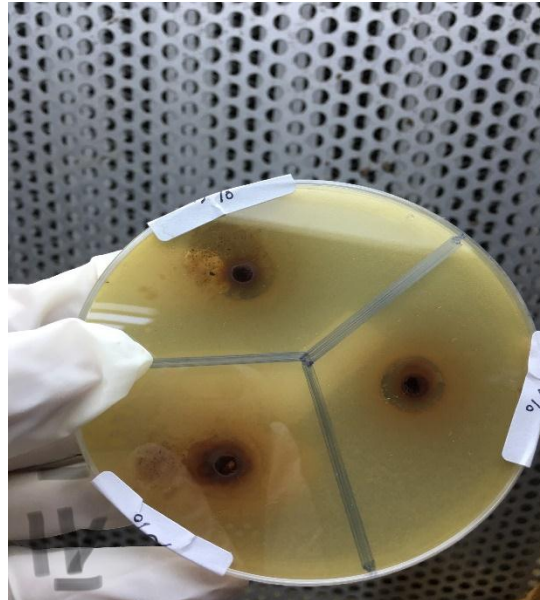
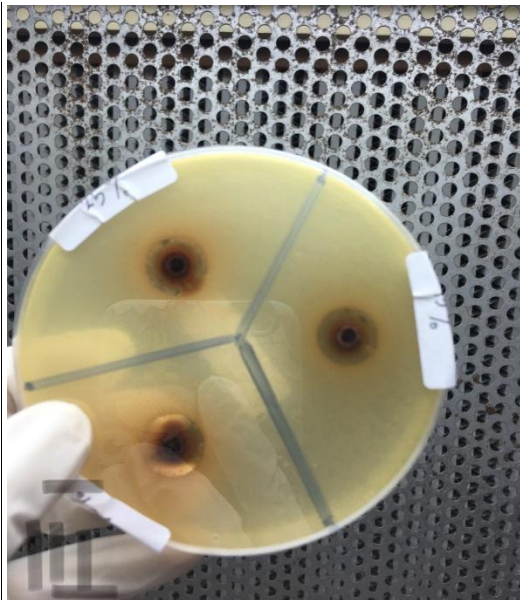
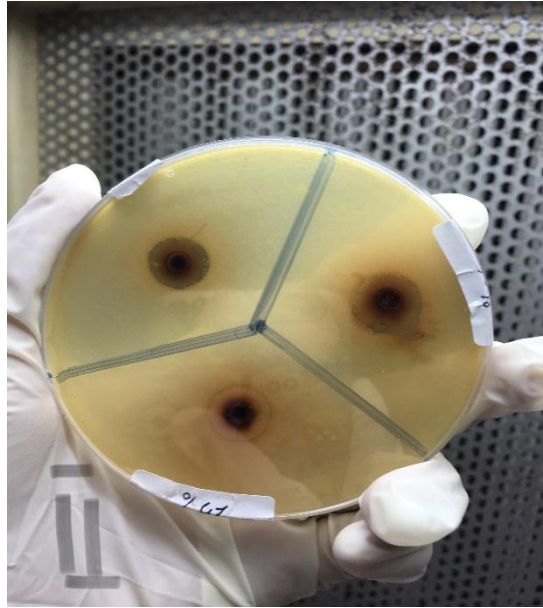
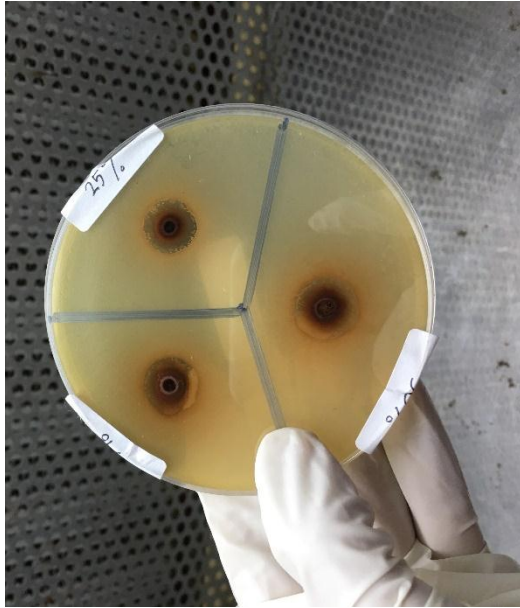
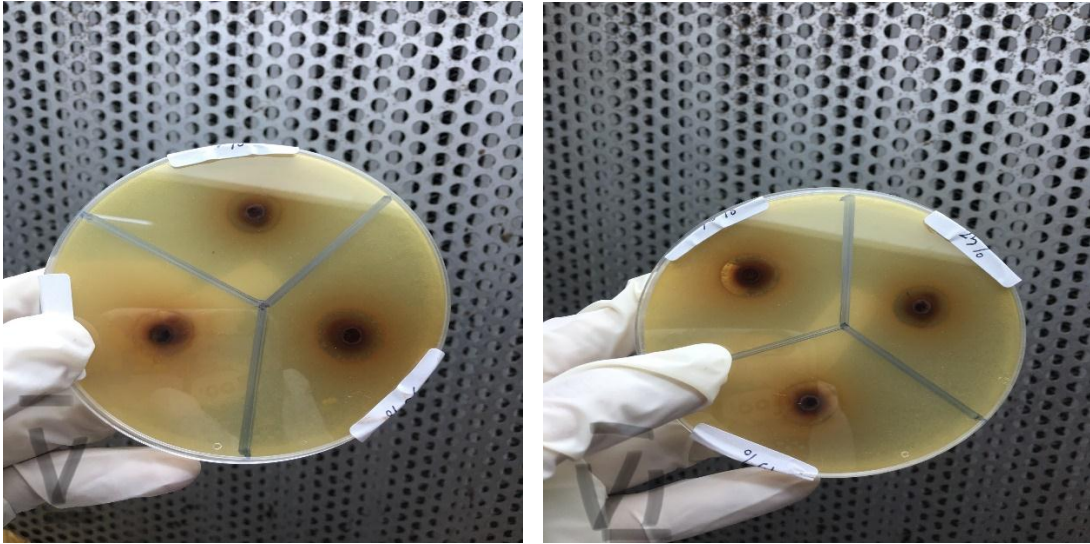


LAMPIRAN

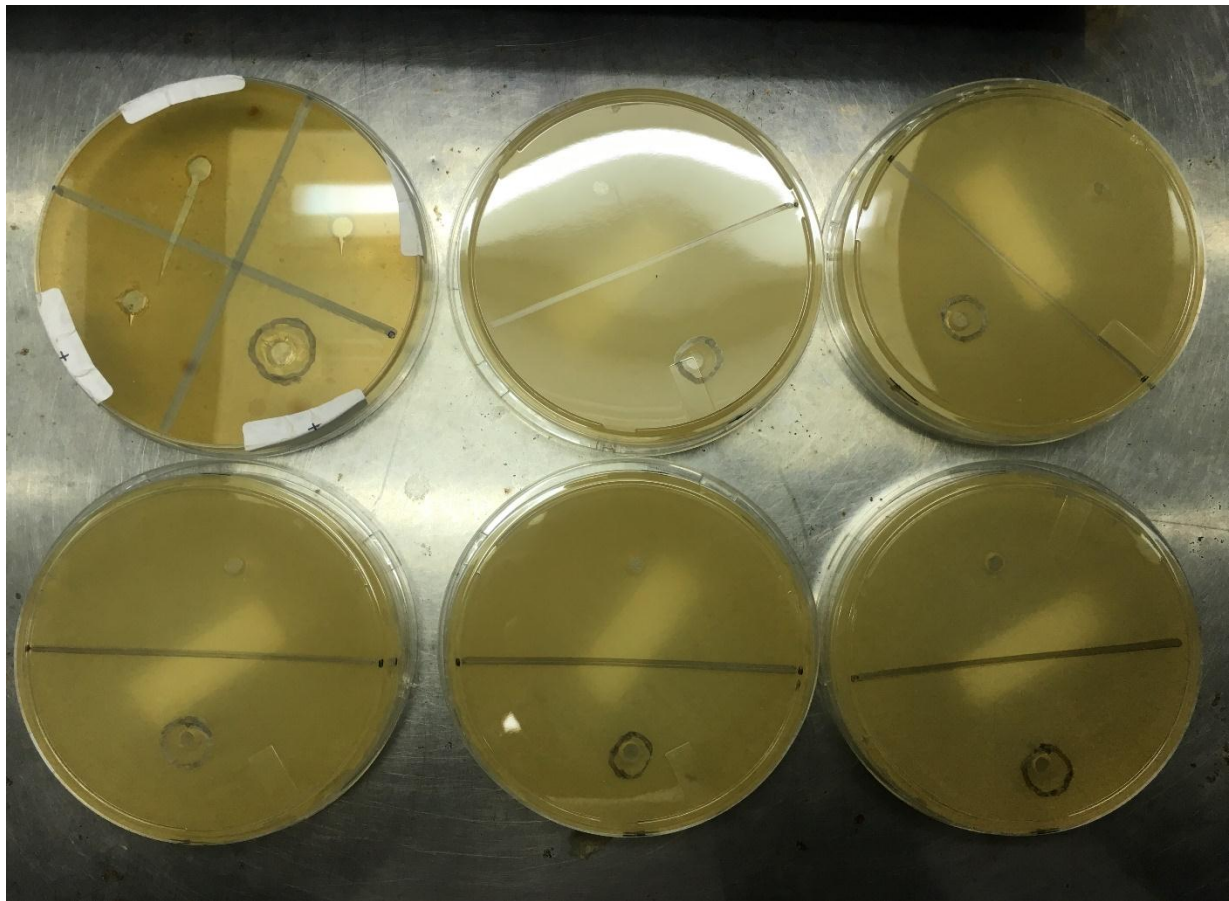
LAMPIRAN 1

A. Zona radikal ekstrak sarang semut (*Myrmecodia pendans*) terhadap pertumbuhan *Staphylococcus aureus*





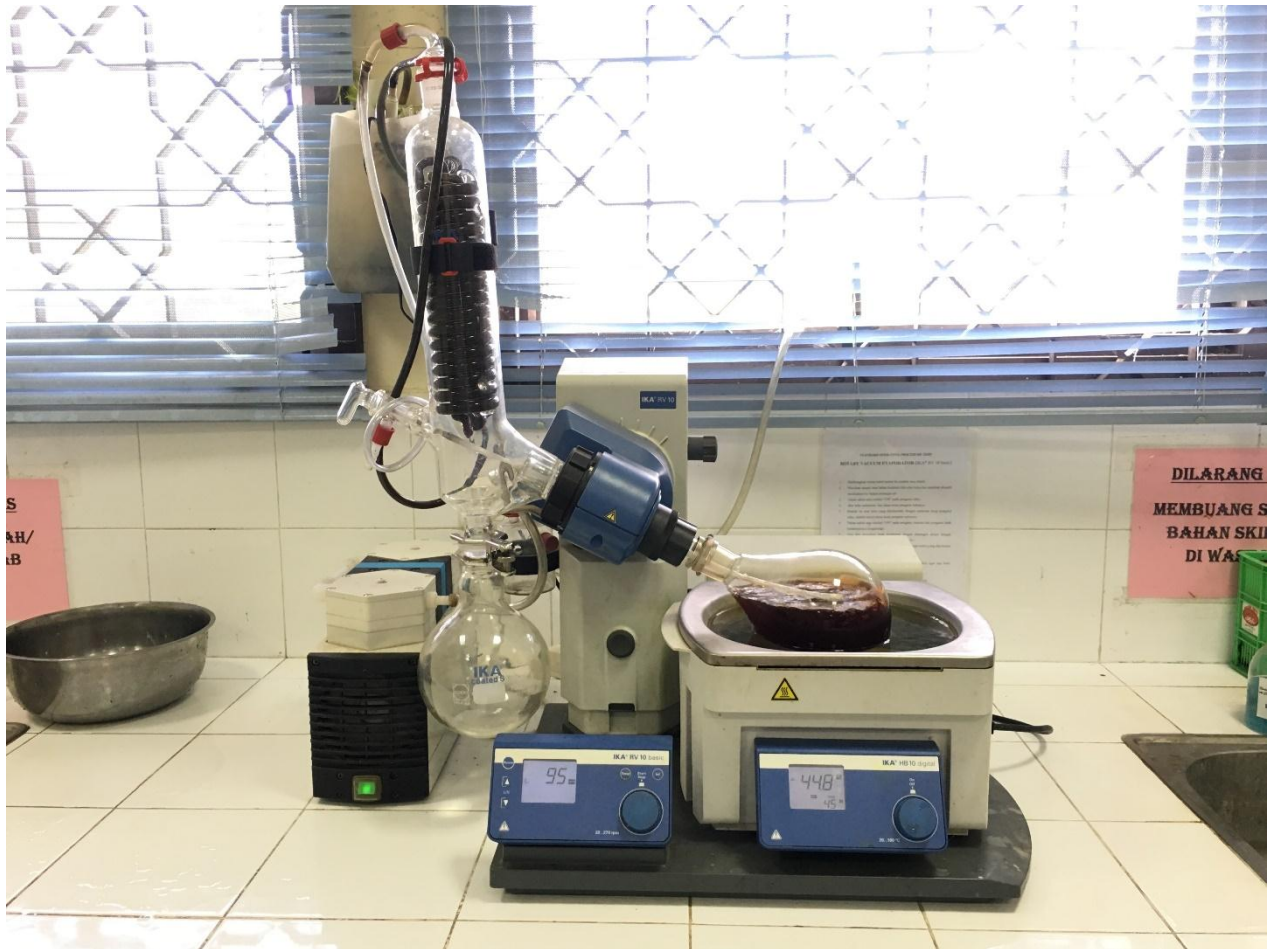
B. Zona radikal sodium hipoklorit (NaOCl) 2,5% (kontrol positif) dan aquadest (kontrol negatif) terhadap pertumbuhan *Staphylococcus aureus*



C. Proses maserasi ekstrak sarang semut (*Myrmecodia pendans*)



D. Proses *vacum rotary evaporator*



E. Proses pengentalan ekstrak sarang semut (*Myrmecodia pendans*) dengan waterbath



LAMPIRAN 2

Perlakuan

Tests of Normality

	Perlakuan	Kolmogorov-Smirnov ^a			Shapiro-Wilk		
		Statistic	df	Sig.	Statistic	df	Sig.
Zona_Hambat_Bakteri	15%	.277	6	.168	.810	6	.072
	25%	.201	6	.200*	.966	6	.868
	50%	.238	6	.200*	.931	6	.590
	K+	.397	6	.004	.653	6	.002

*. This is a lower bound of the true significance.

a. Lilliefors Significance Correction

Oneway

Descriptives

Zona_Hambat_Bakteri

	N	Mean	Std. Deviation	Std. Error	95% Confidence Interval for Mean		Minimum	Maximum
					Lower Bound	Upper Bound		
15%	6	8.43333	1.549731	.632675	6.80699	10.05968	7.050	11.400
25%	6	7.96667	.347371	.141814	7.60212	8.33121	7.450	8.400
50%	6	9.50833	1.417186	.578564	8.02109	10.99558	7.850	12.000
K+	6	3.60833	.989655	.404025	2.56975	4.64691	3.000	5.600
K-	6	.00000	.000000	.000000	.00000	.00000	.000	.000
Total	30	5.90333	3.760845	.686633	4.49901	7.30766	.000	12.000

Test of Homogeneity of Variances

Zona_Hambat_Bakteri

Levene Statistic	df1	df2	Sig.
2.746	4	25	.051

ANOVA

Zona_Hambat_Bakteri

	Sum of Squares	Df	Mean Square	F	Sig.
Between Groups	382.624	4	95.656	86.800	.000
Within Groups	27.551	25	1.102		
Total	410.175	29			

Post Hoc Tests

Multiple Comparisons

Dependent Variable: Zona_Hambat_Bakteri

LSD

(I) Perlakuan	(J) Perlakuan	Mean Difference (I-J)	Std. Error	Sig.	95% Confidence Interval	
					Lower Bound	Upper Bound
15%	25%	.466667	.606089	.449	-.78160	1.71493
	50%	-1.075000	.606089	.088	-2.32326	.17326
	K+	4.825000*	.606089	.000	3.57674	6.07326
	K-	8.433333*	.606089	.000	7.18507	9.68160
25%	15%	-.466667	.606089	.449	-1.71493	.78160
	50%	-1.541667*	.606089	.018	-2.78993	-.29340
	K+	4.358333*	.606089	.000	3.11007	5.60660
	K-	7.966667*	.606089	.000	6.71840	9.21493
50%	15%	1.075000	.606089	.088	-.17326	2.32326
	25%	1.541667*	.606089	.018	.29340	2.78993
	K+	5.900000*	.606089	.000	4.65174	7.14826
	K-	9.508333*	.606089	.000	8.26007	10.75660
K+	15%	-4.825000*	.606089	.000	-6.07326	-3.57674
	25%	-4.358333*	.606089	.000	-5.60660	-3.11007
	50%	-5.900000*	.606089	.000	-7.14826	-4.65174
	K-	3.608333*	.606089	.000	2.36007	4.85660
K-	15%	-8.433333*	.606089	.000	-9.68160	-7.18507
	25%	-7.966667*	.606089	.000	-9.21493	-6.71840
	50%	-9.508333*	.606089	.000	-10.75660	-8.26007
	K+	-3.608333*	.606089	.000	-4.85660	-2.36007

*. The mean difference is significant at the 0.05 level.

Kruskal-Wallis Test

Ranks			
	Perlakuan	N	Mean Rank
Zona_Hambat_Bakteri	15%	6	20.00
	25%	6	19.00
	50%	6	25.50
	K+	6	9.50
	K-	6	3.50
	Total	30	

Test Statistics ^{a,b}	
	Zona_Hambat_Bakteri
Chi-Square	24.405
df	4
Asymp. Sig.	.000

a. Kruskal Wallis Test

b. Grouping Variable: Perlakuan