

LAMPIRAN

Lampiran 1. Foto Alat dan Bahan



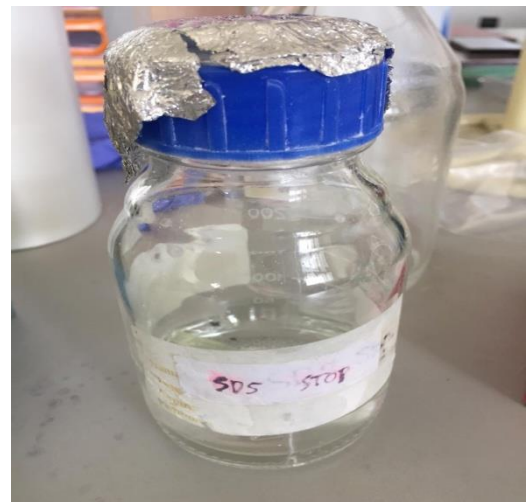
Neraca Analitik



Mikropipet



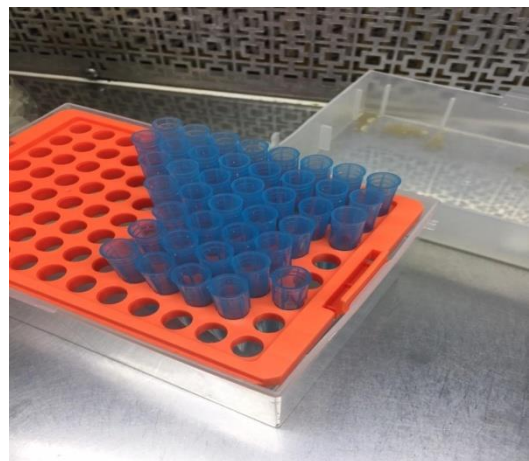
ELISA reader



Larutan SDS Stopper 5 %



MK (Media Komplit)



Blue tip



Inkubator CO₂



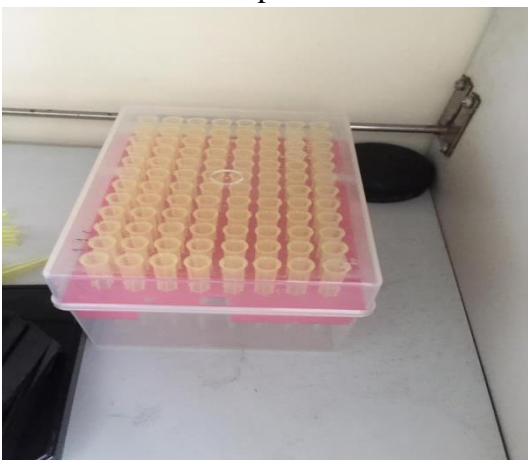
Conical Tube



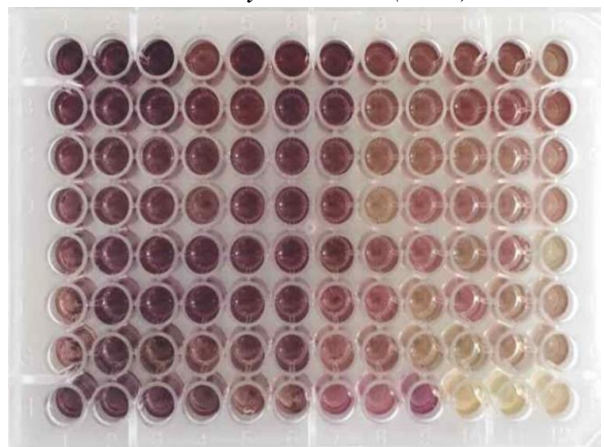
Mikroskop Inverted



Laminary Air Flow (LAF)



Yellow tip



Well-plate 96

Lampiran 2. Hasil pembacaan absorbansi dengan ELISA reader

($\lambda = 595 \text{ nm}$)

Konsentrasi	1	2	3	4	5	6	7	8	9	10	11	12
A	1.056	1.066	1.110	0.502	1.002	0.873	0.888	0.568	0.510	0.524	0.563	0.511
B	0.749	0.907	0.873	0.712	0.710	0.956	0.853	0.435	0.390	0.545	0.530	0.539
C	0.629	0.621	0.752	0.816	0.670	0.716	0.657	0.356	0.338	0.338	0.321	0.343
D	0.650	0.616	0.538	0.616	0.770	0.749	0.573	0.246	0.357	0.330	0.330	0.314
E	0.608	0.624	0.777	0.740	0.783	0.866	0.691	0.426	0.314	0.344	0.352	0.266
F	0.452	0.792	0.782	0.782	0.659	0.649	0.475	0.352	0.251	0.282	0.328	0.319
G	0.434	0.719	0.534	0.379	0.512	0.634	0.275	0.325	0.251	0.255	0.269	0.283
H	0.524	0.577	0.681	0.670	0.477	0.383	0.292	0.210	0.325	0.106	0.104	0.136

Keterangan :

A = 1000 $\mu\text{gr/mL}$

B = 500 $\mu\text{gr/mL}$

C = 250 $\mu\text{gr/mL}$

D = 125 $\mu\text{gr/mL}$

E = 62.5 $\mu\text{gr/mL}$

F = 31.25 $\mu\text{gr/mL}$

G = 15.625 $\mu\text{gr/mL}$

H1 – H6: Kontrol sel *Burkitt's lymphoma*

H7 – H12: Kontrol media

