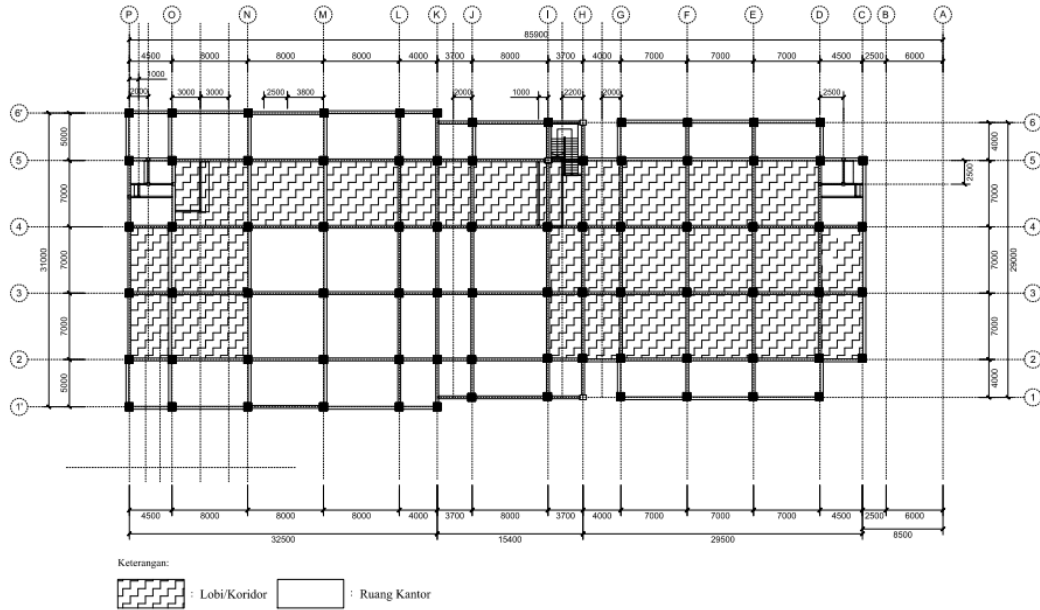


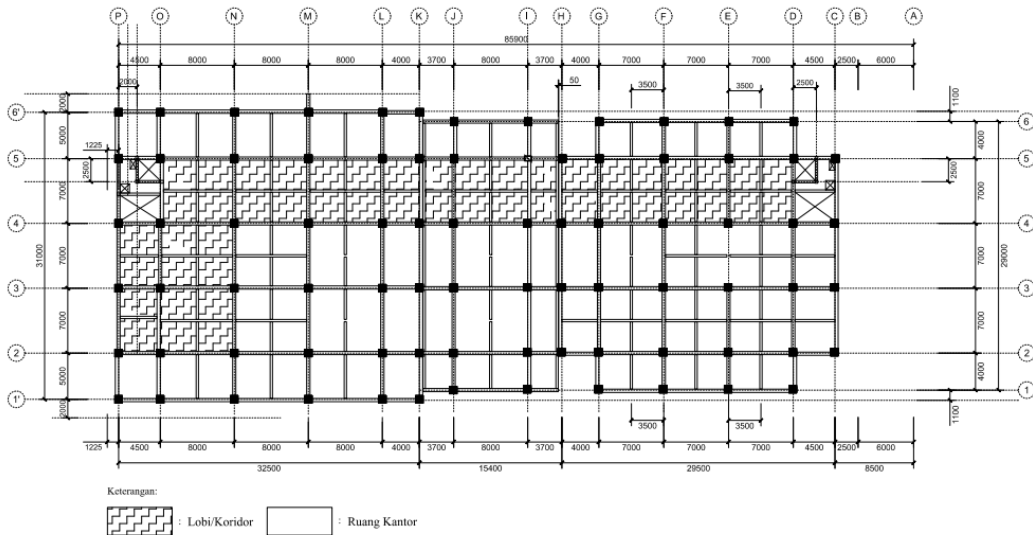
LAMPIRAN

Lampiran 1. Gambar Rencana Kerja (*Shop Drawing*)

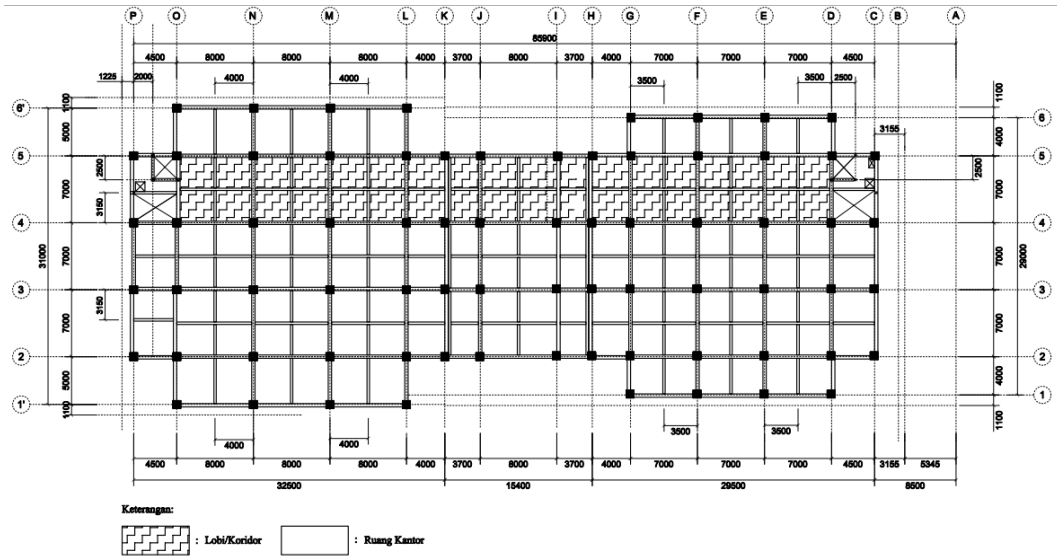
Denah Ruang Lantai Dasar



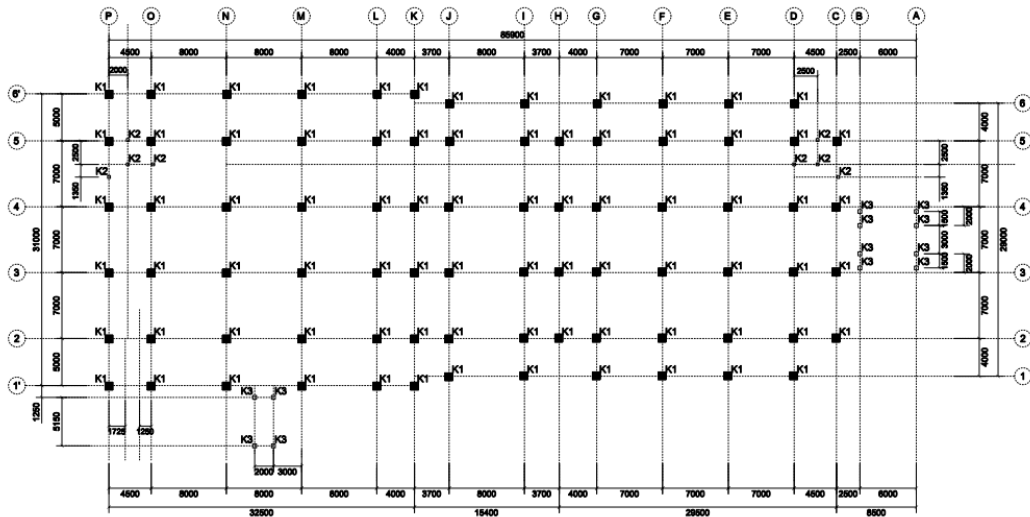
Denah Ruang Lantai 1



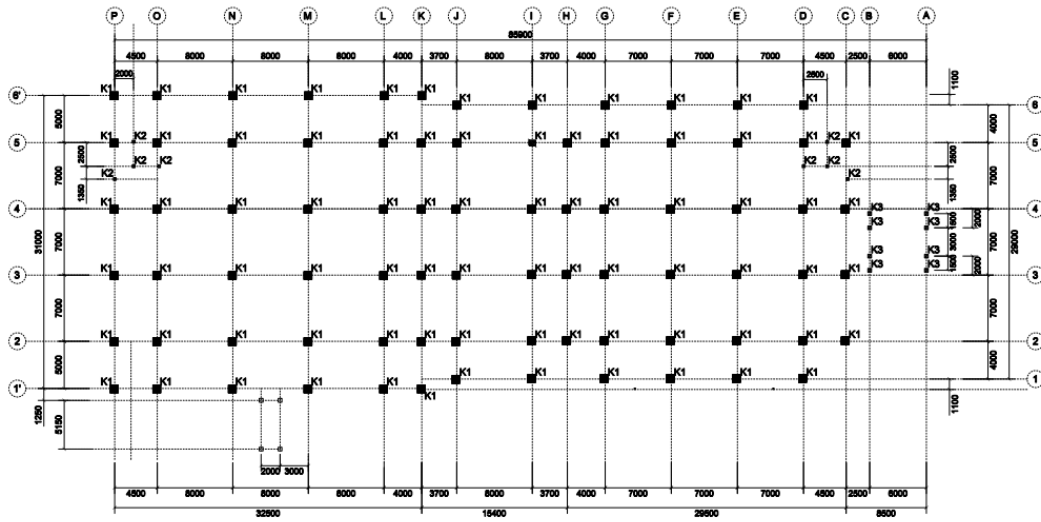
Denah Ruang Lantai 2



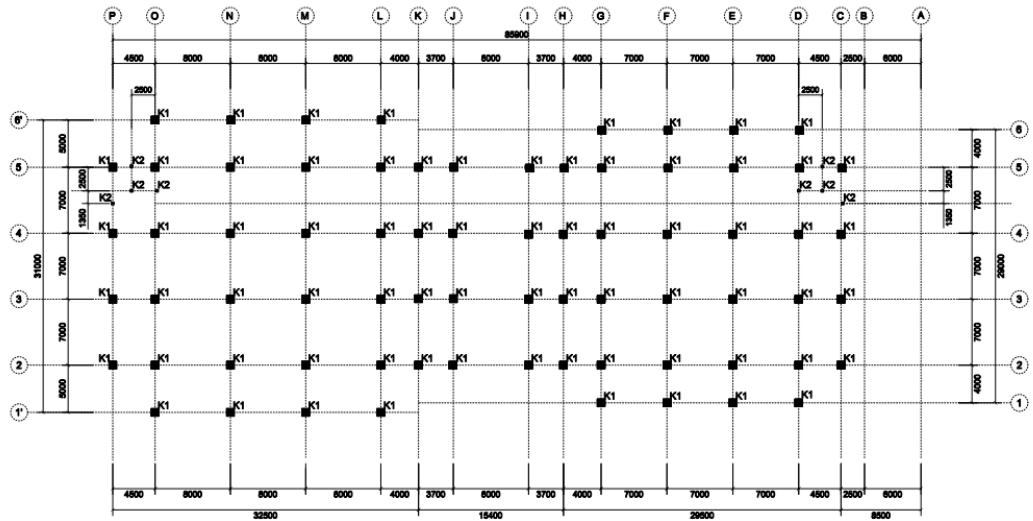
Denah Kolom Lantai Dasar



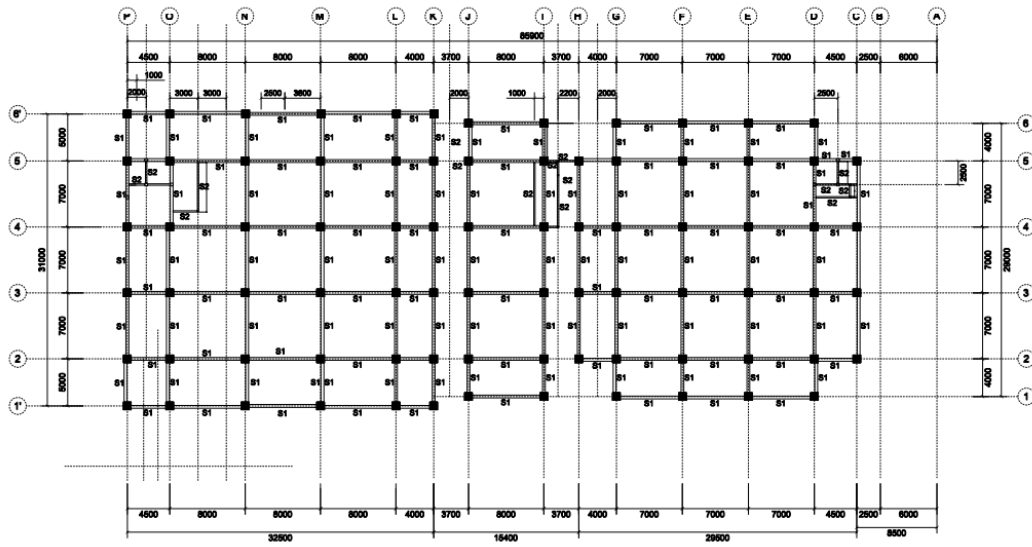
Denah Kolom Lantai 1



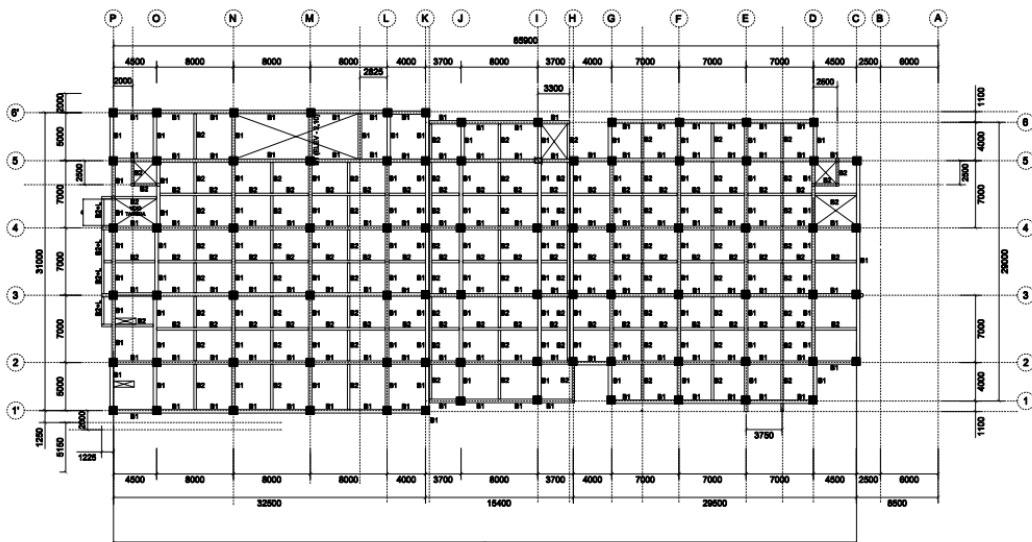
Denah Kolom Lantai 2



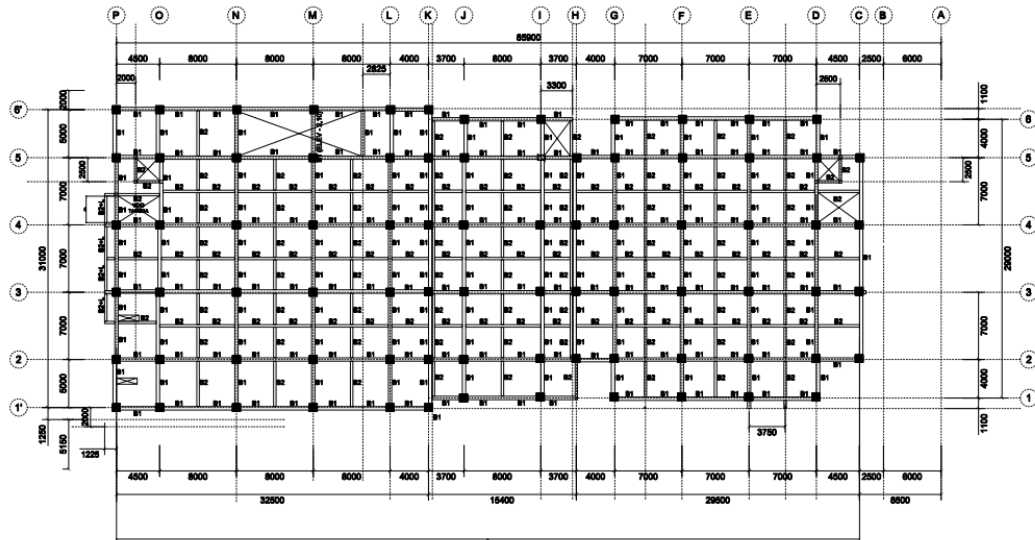
Denah Sloof



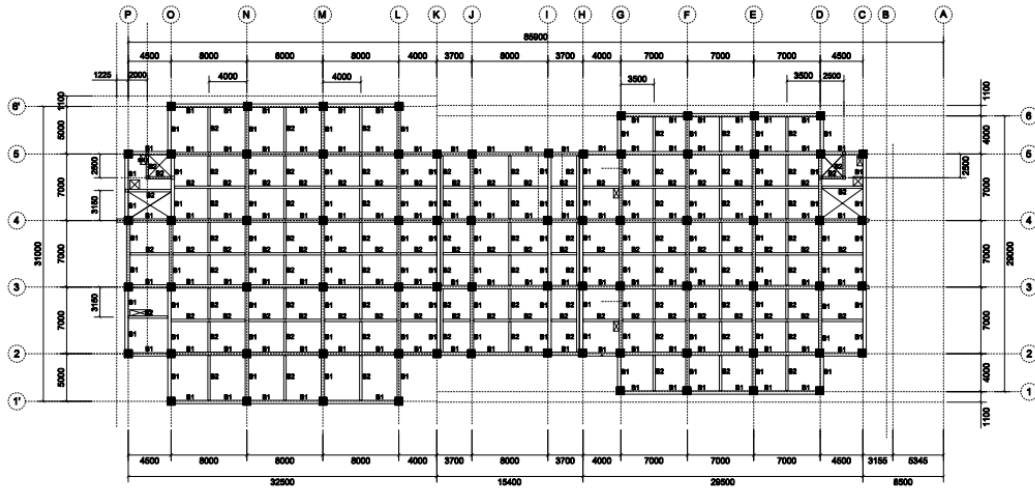
Denah Balok Lantai 1



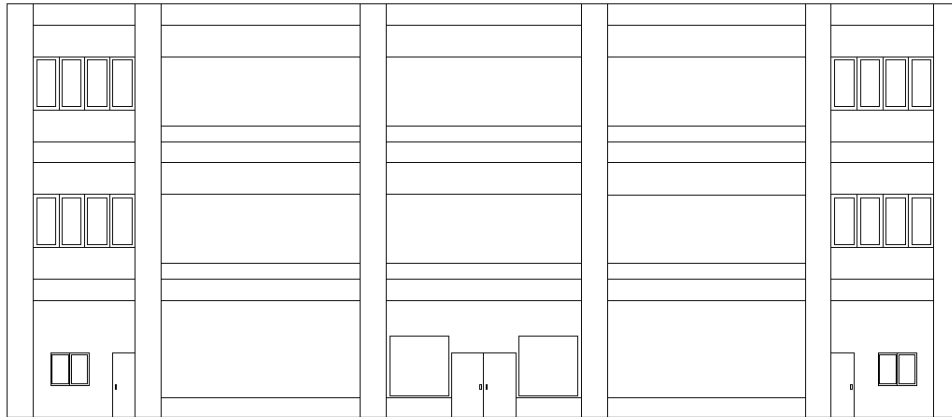
Denah Balok Lantai 2



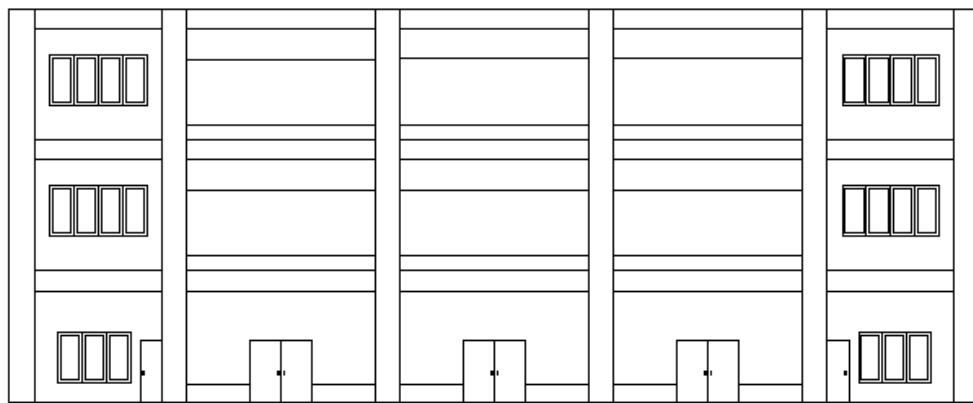
Denah Balok Lantai 3



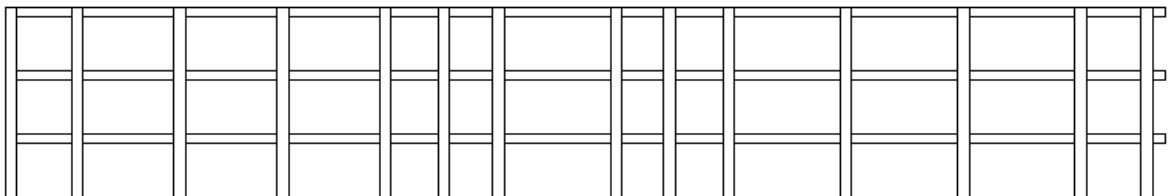
Tampak Depan



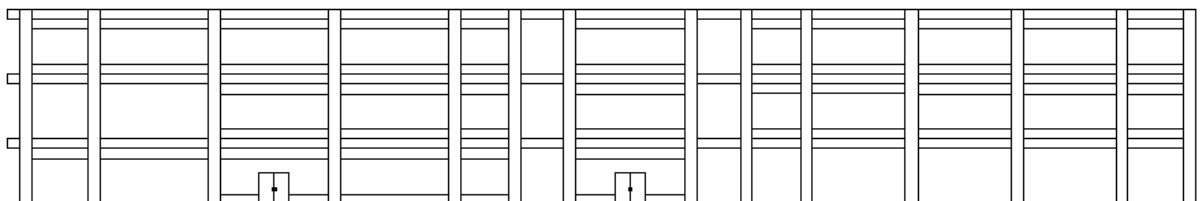
Tampak Belakang



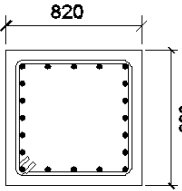
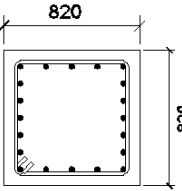
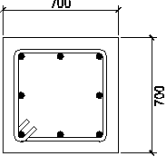
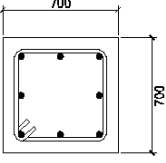
Tampak Samping Kanan



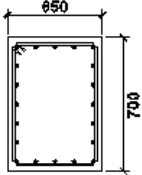
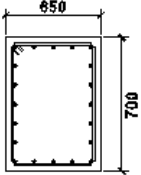
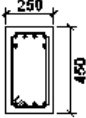
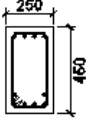
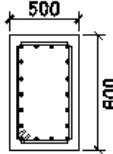
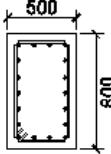
Tampak Samping Kiri



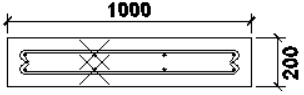
Detail Kolom

Jenis Kolom	K1		K2	
	1/4 L Dari Sendi Plastik	1/2 L Pada Tengah Panjang	1/4 L Dari Sendi Plastik	1/2 L Pada Tengah Panjang
Deskripsi				
Tulangan Utama	24 D 19	24 D 19	12 D 16	12 D 16
Sengkang	Ø 10 - 125	Ø 10 - 175	Ø 10 - 150	Ø 10 - 150

Detail Balok

Jenis Balok	B1		B2	
	Tumpuan	Lapangan	Tumpuan	Lapangan
Deskripsi				
Tulangan Atas	6 D 19	6 D 19	6 D 19	4 D 19
Tulangan Bawah	5 D 19	5 D 19	4 D 19	6 D 19
Tulangan Pinggng	2 D 19	2 D 19	-	-
Sengkang	Ø 10 - 60	Ø 10 - 150	Ø 9 - 150	Ø 8 - 150
Jenis Balok	S1			
	Tumpuan	Lapangan		
Deskripsi				
Tulangan Atas	4 D 16	4 D 16		
Tulangan Bawah	4 D 16	4 D 16		
Tulangan Pinggng	-	-		
Sengkang	Ø 10 - 175	Ø 10 - 175		

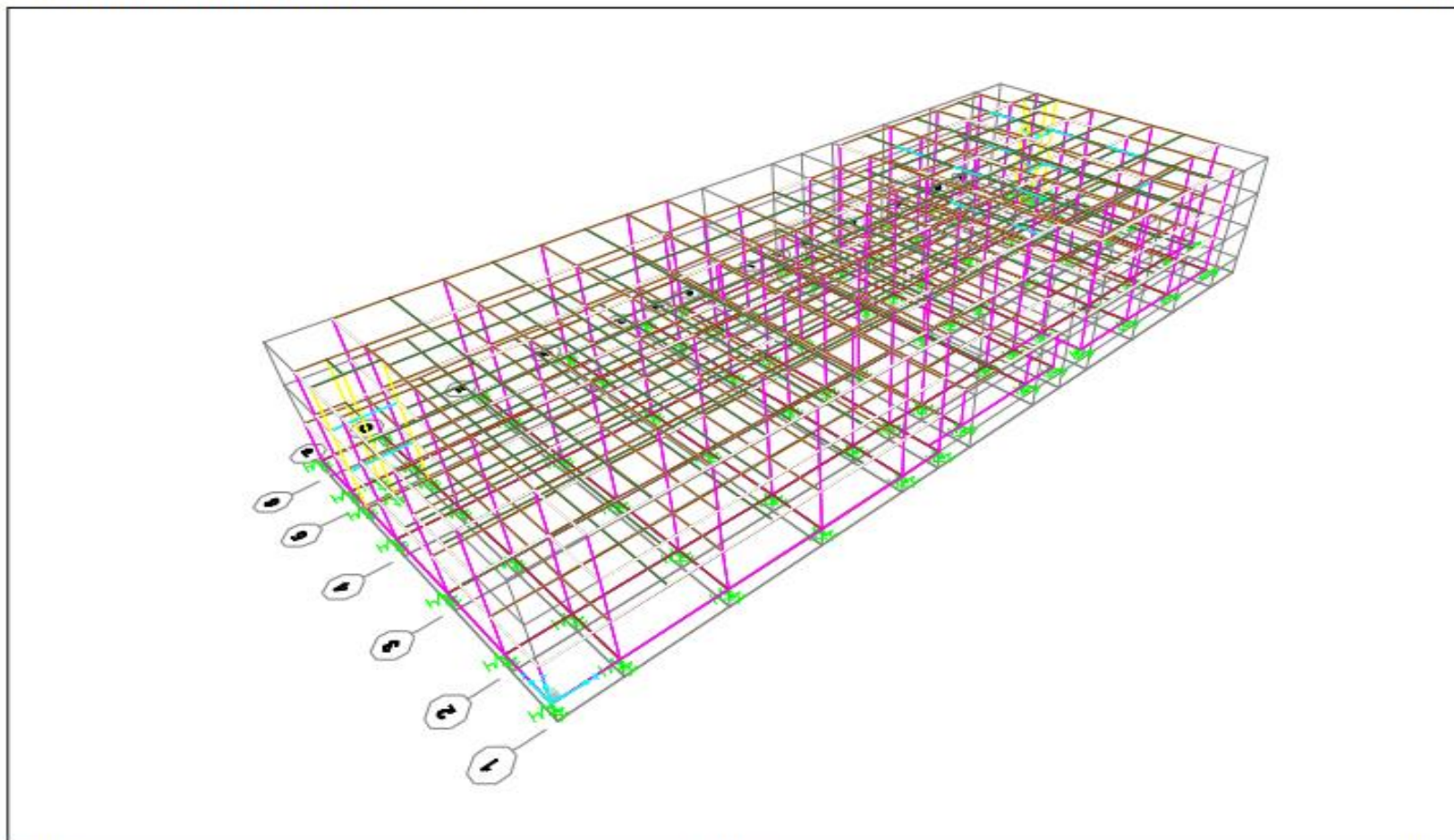
Detail Plat

Jenis Plat	Plat menerus
Deskripsi	 <p>The diagram shows a rectangular plate with a length of 1000 and a width of 200. The plate has a central longitudinal slot and is supported by two vertical supports, each indicated by a cross symbol. The drawing is a technical representation of a continuous plate.</p>
Tulangan Atas	D 13 - 250
Tulangan Bawah	D 13 - 250

Lampiran 2. SAP2000 Versi 21 Report

TANAH SE GEDUNG KPPD 3 LANTAI fixxx SE.sdb

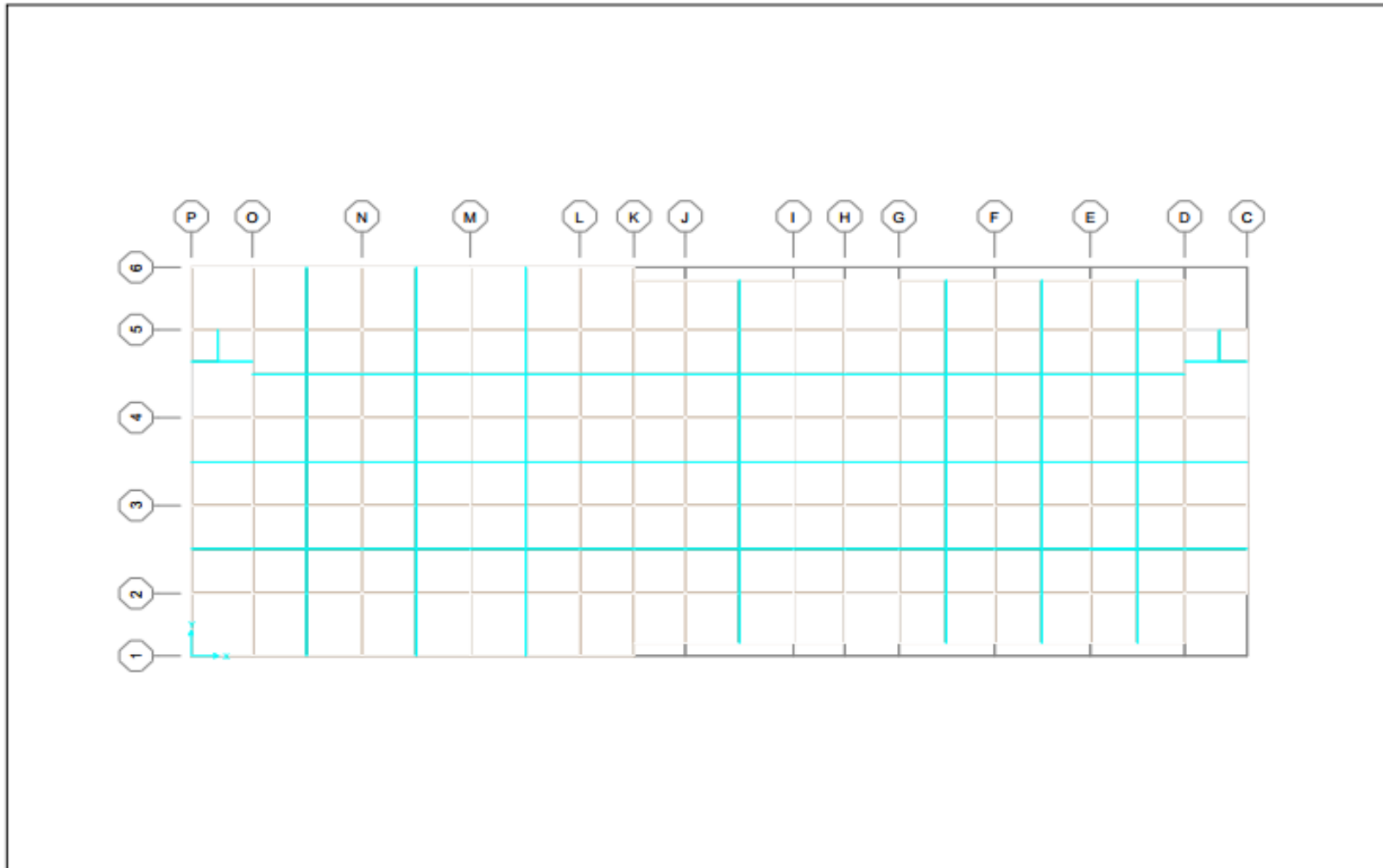
4/23/2019

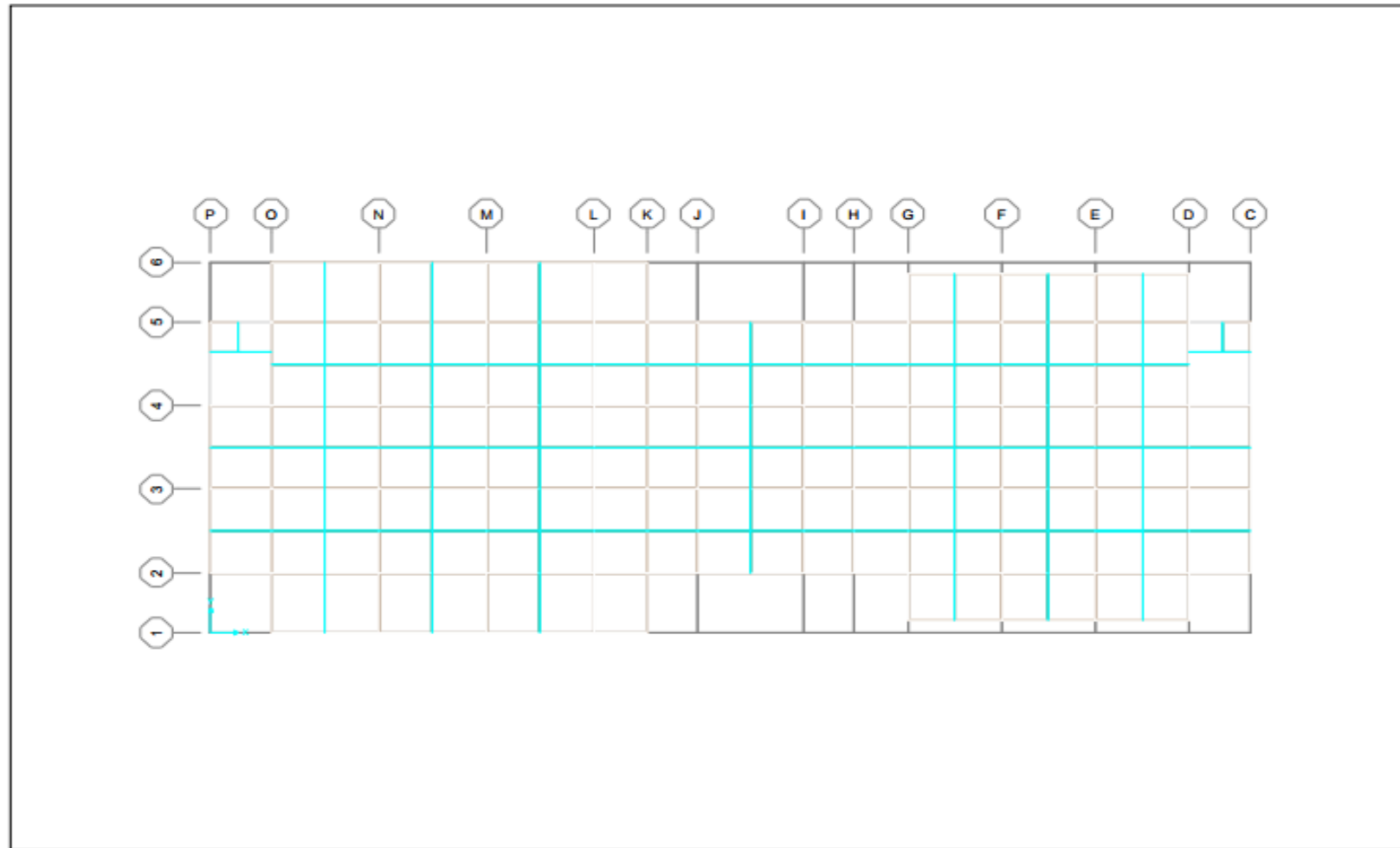


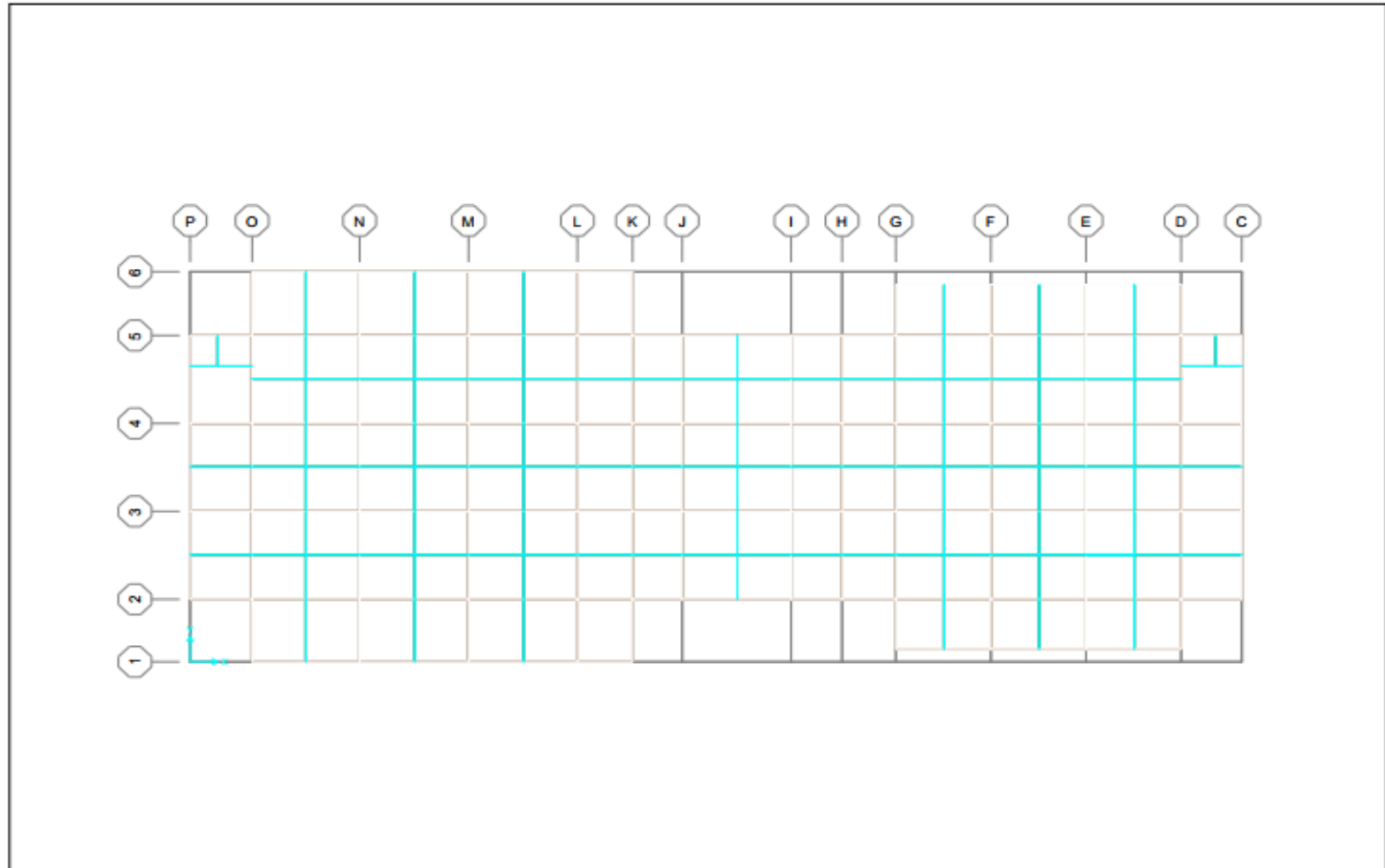
SAP2000 21.0.1

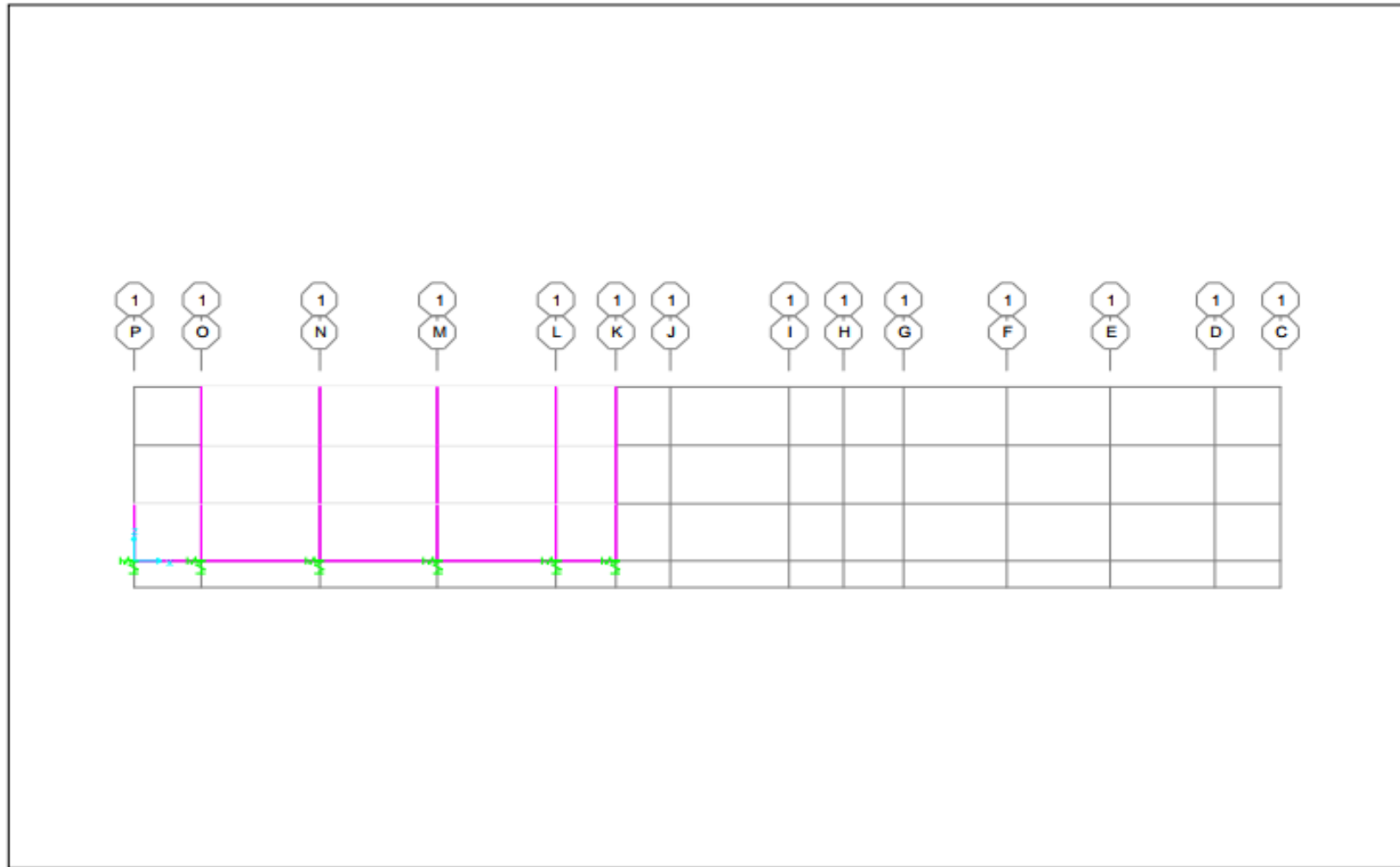
3-D View

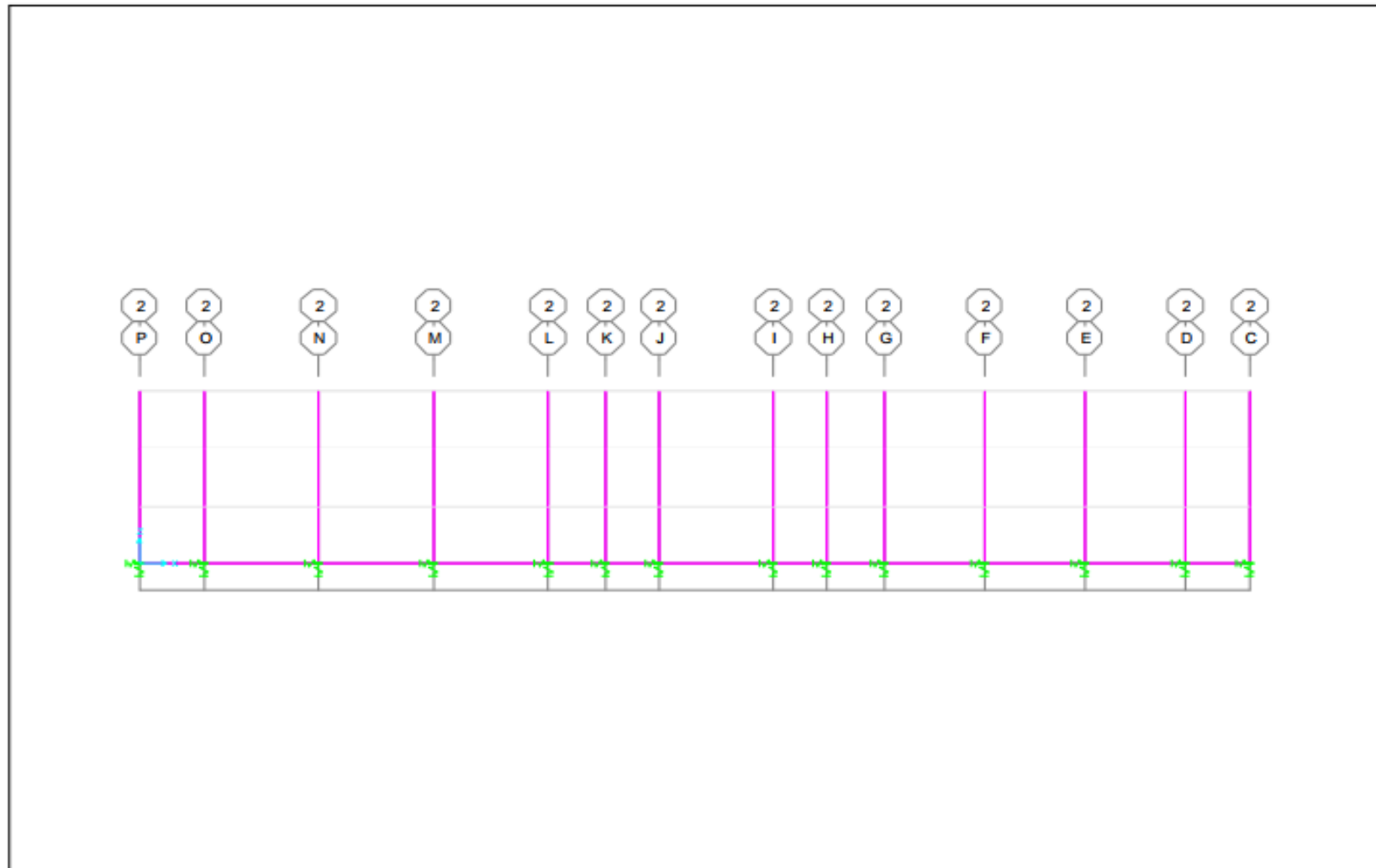
KN, m, C



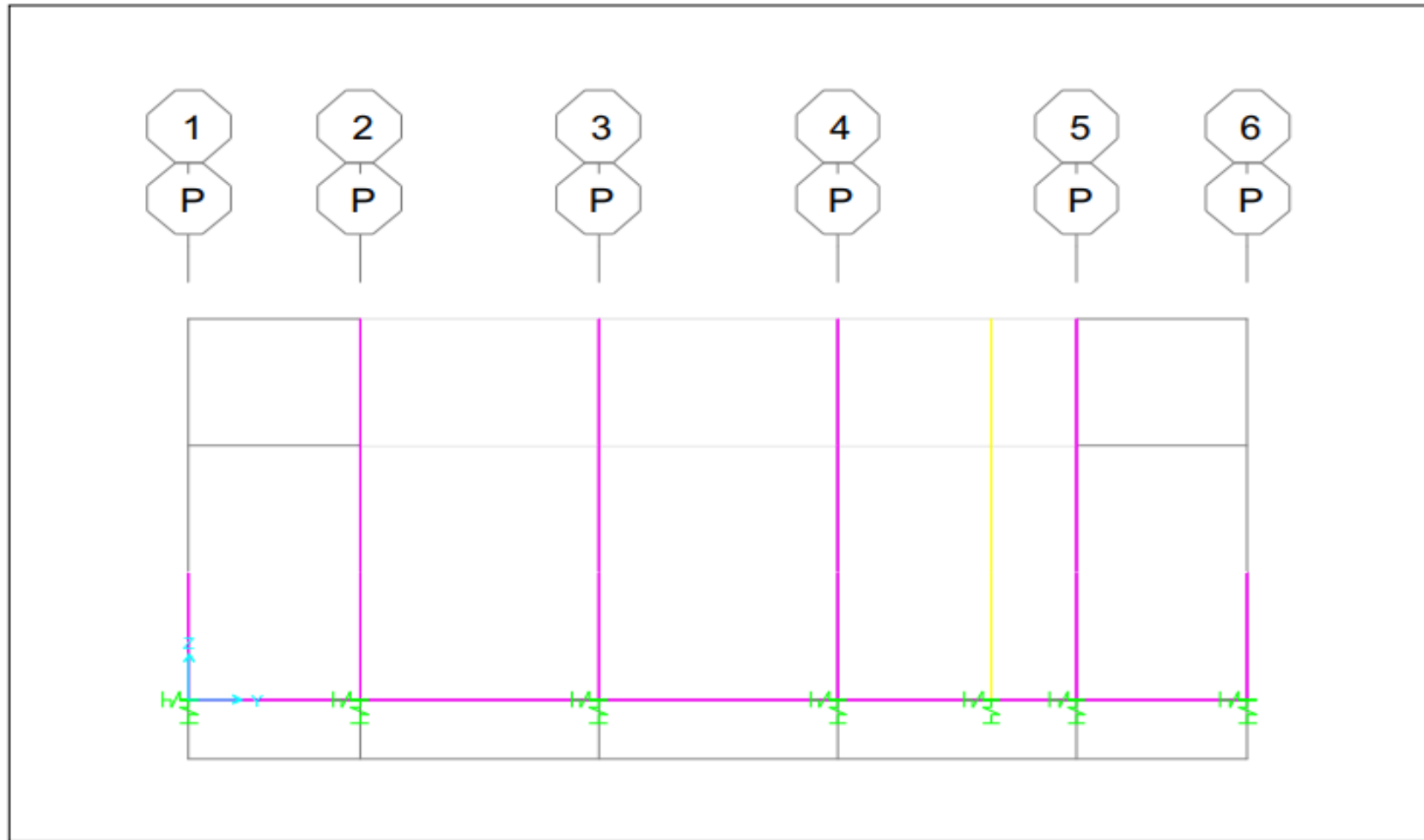


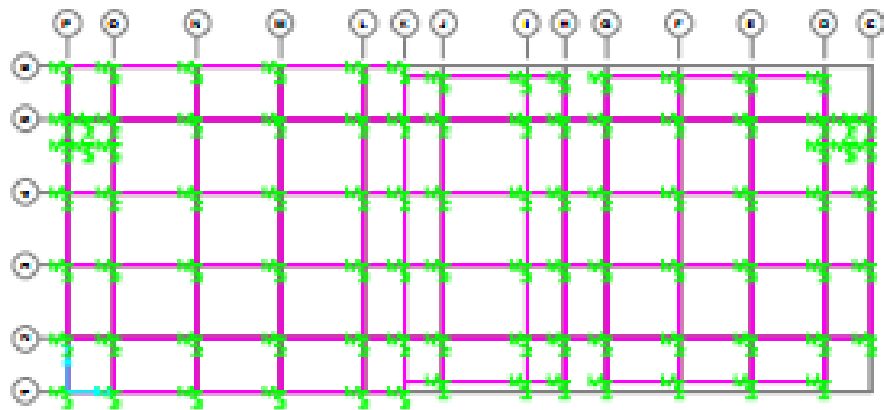












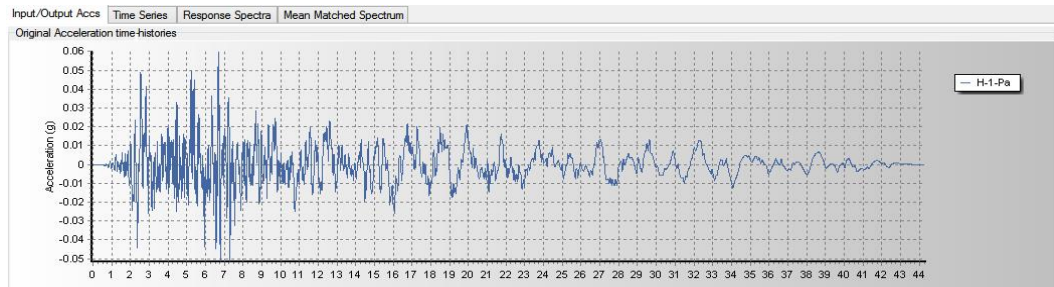


Lampiran 3. SEISMOMATCH V.2016

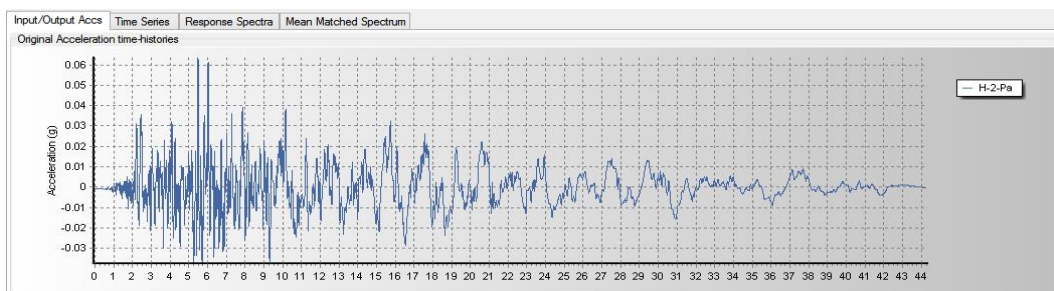
A. Akselogram Rekaman Gempa

1. Tanah Keras (SC)

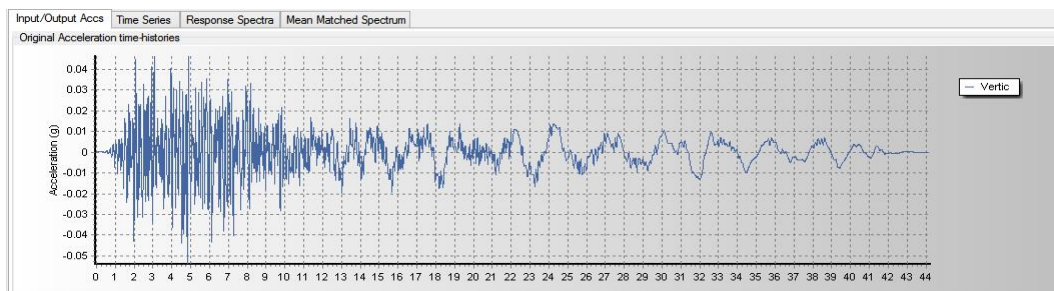
a. Parkfield-1966-Cholame



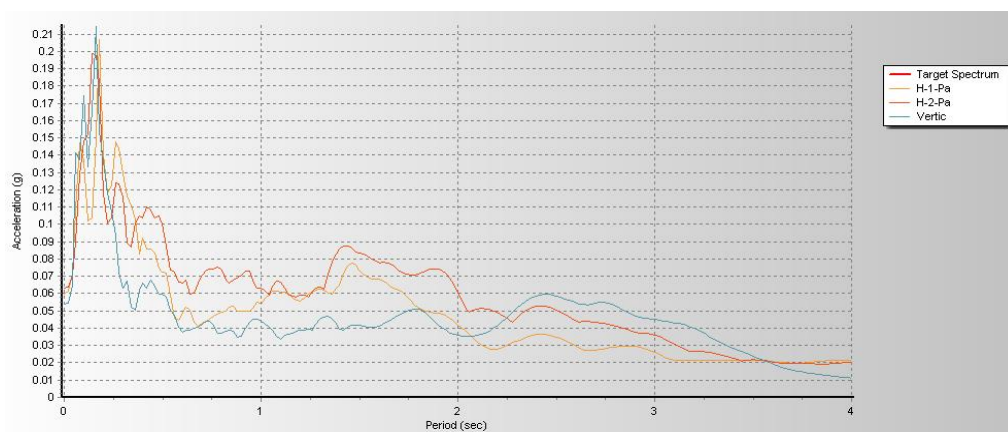
Gambar 1 H-1-Parkfield Cholame



Gambar 2 H-2-Parkfield Cholame

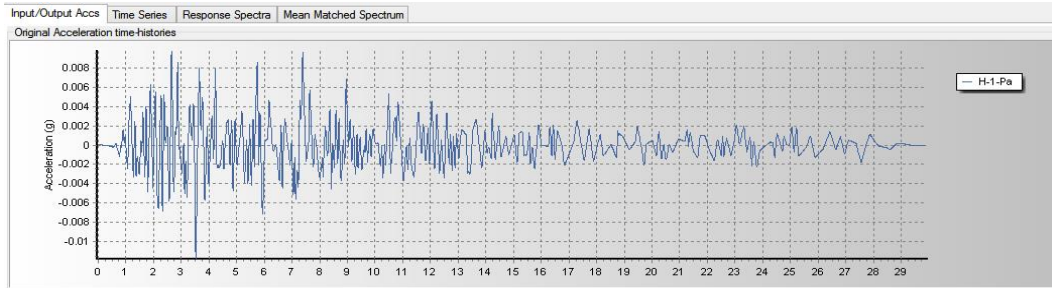


Gambar 3 Vertikal-Parkfield Cholame

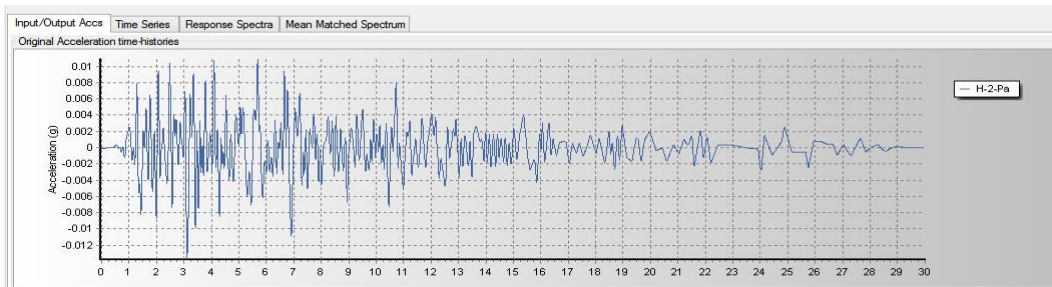


Gambar 4 Respon Spektra Parkfield Cholame

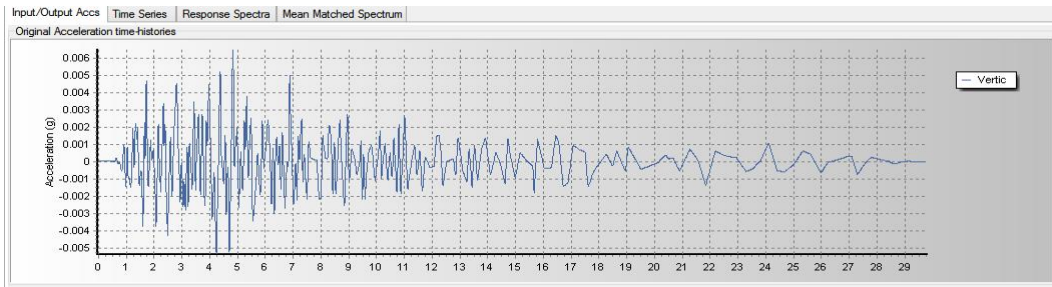
b. Parkfield-1966-San Luis Obispo



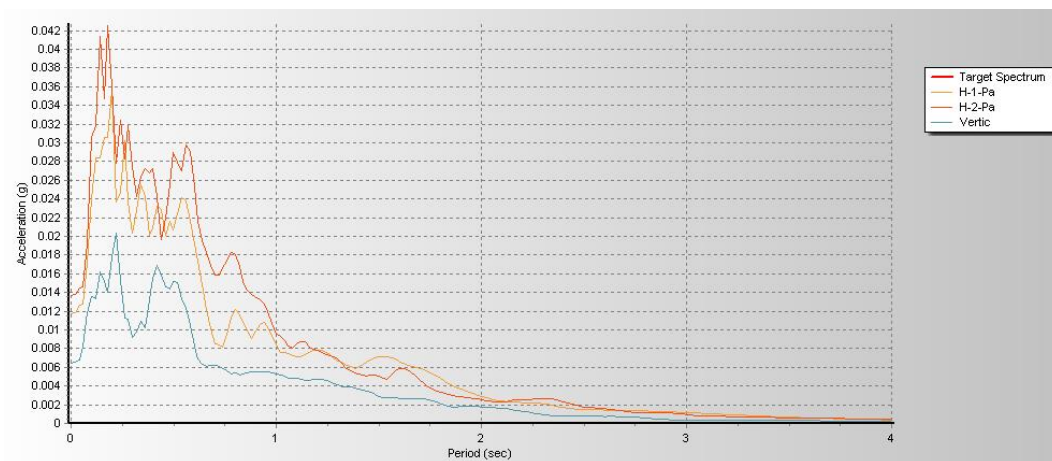
Gambar 5 H-1-Parkfield San Luis Obispo



Gambar 6 H-2-Parkfield San Luis Obispo

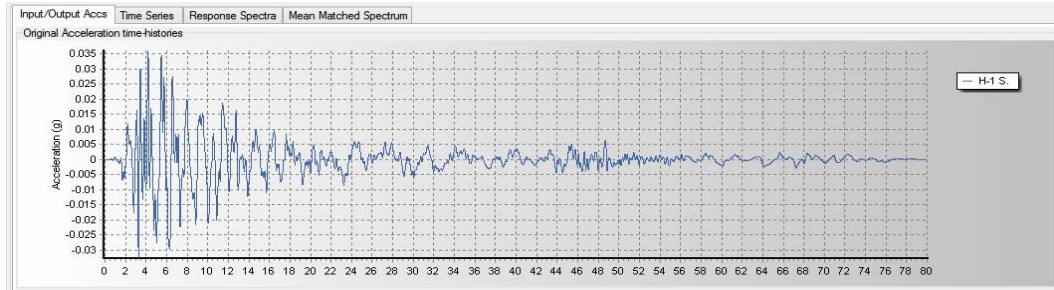


Gambar 7 Vertical-Parkfield San Luis Obispo

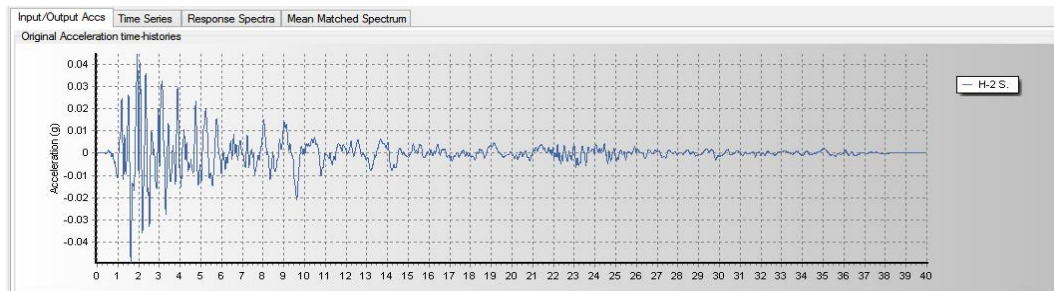


Gambar 8 Respon Spektra Parkfield San Luis Obispo

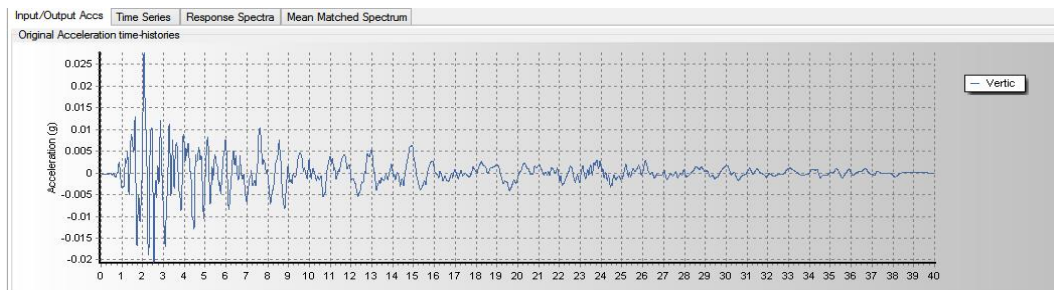
c. Southern Calif



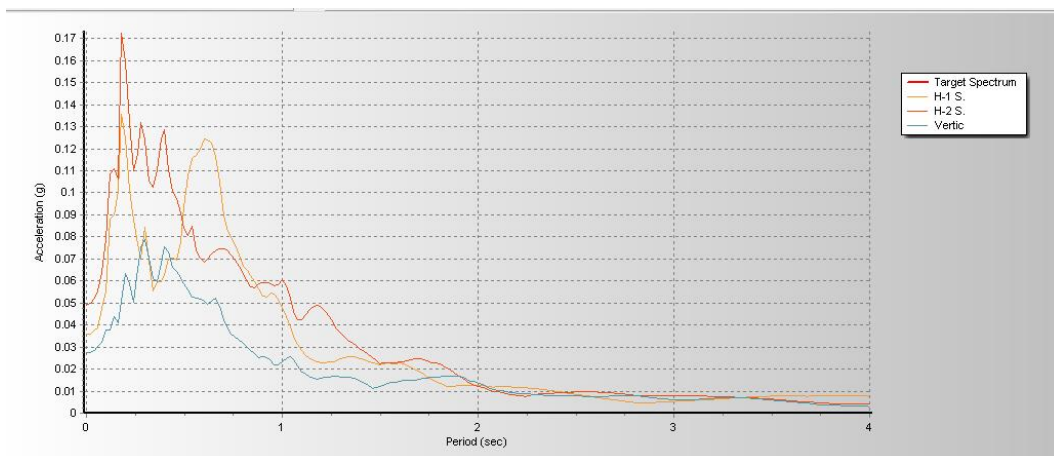
Gambar 9 H-1 S.Calif



Gambar 10 H-2 S.Calif

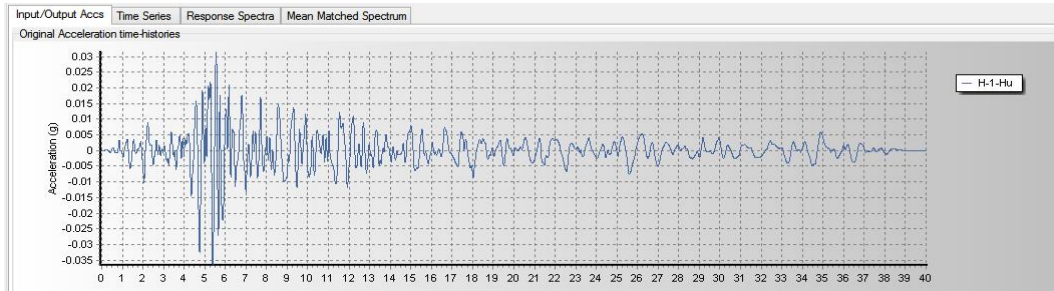


Gambar 11 Vertical S.Calif

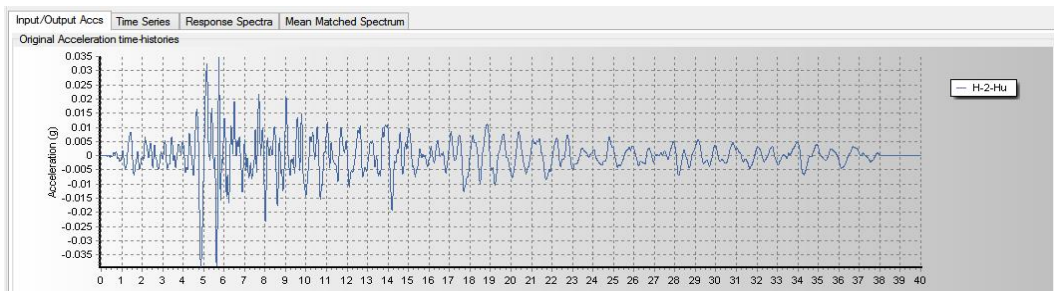


Gambar 12 Respon Spektra S.Calif

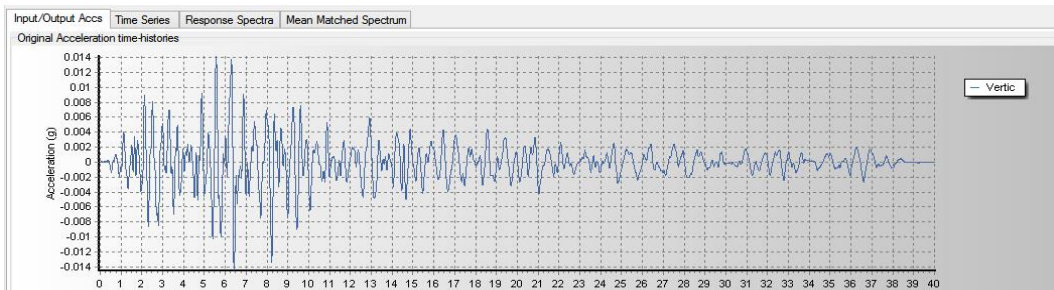
2. Tanah Sedang (SD)
 a. Humbolt Bay-1937-Ferndale City Hall



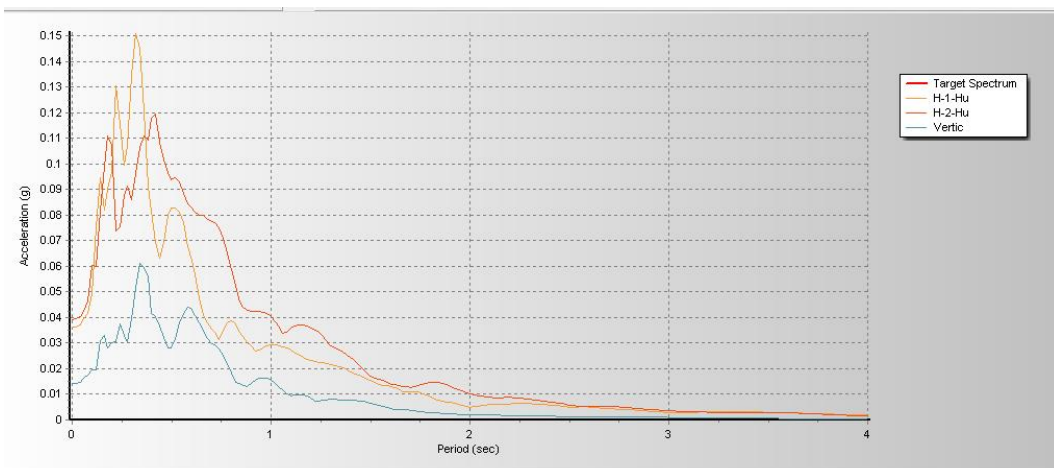
Gambar 13 H-1-Humbolt



Gambar 14 H-2-Humbolt

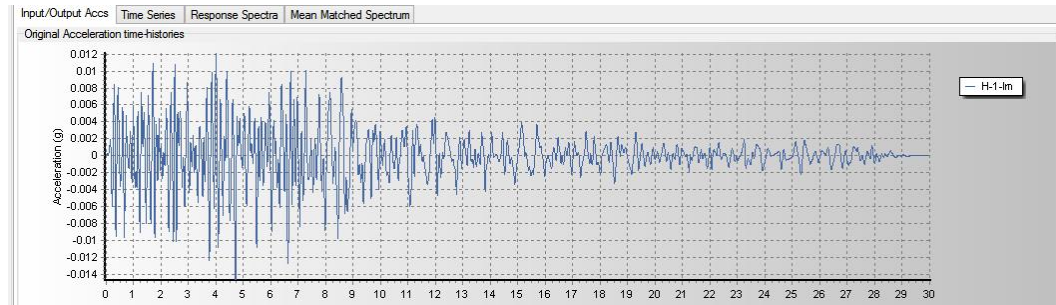


Gambar 15 Vertical-Humbolt

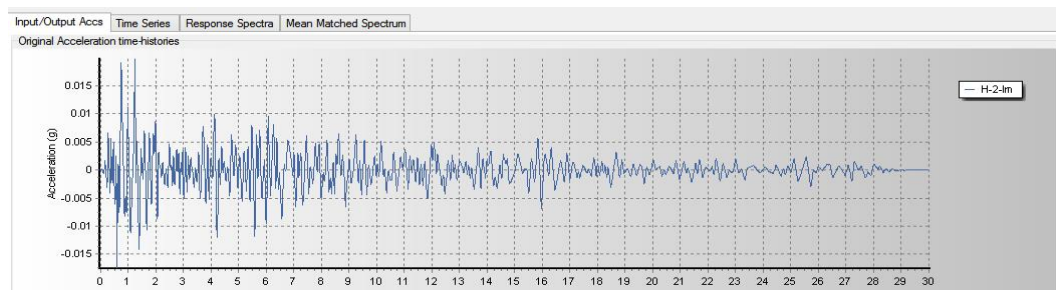


Gambar 16 Respon Spektra Humbolt

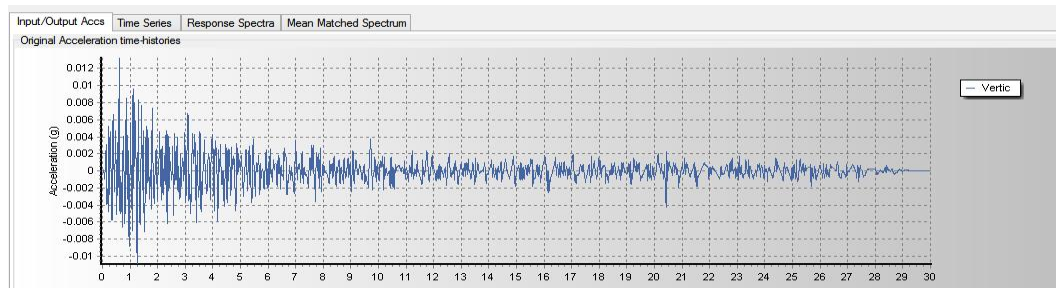
b. Imperial Valley-1938-El Centro Array



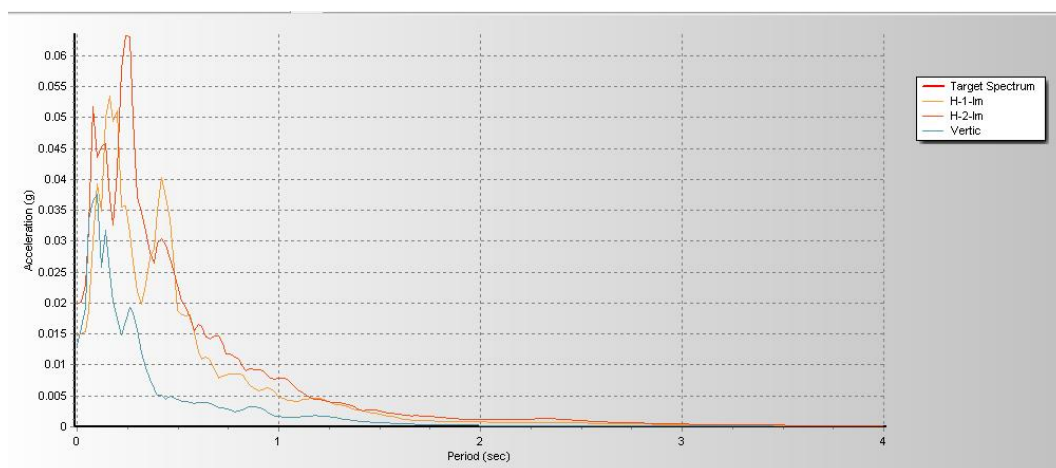
Gambar 17 H-1-Imperial Valley



Gambar 18 H-2-Imperial Valley

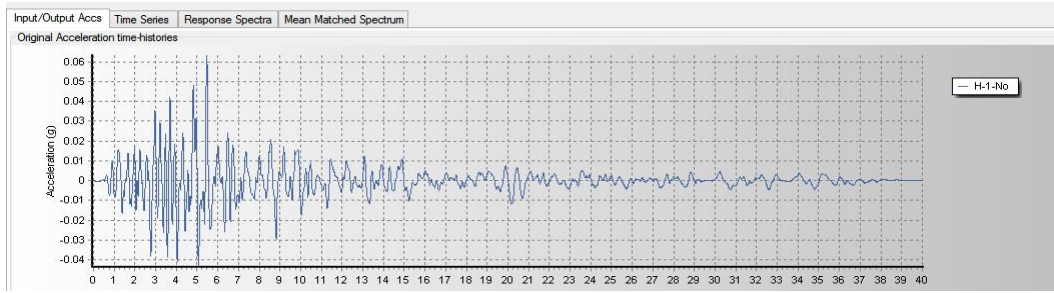


Gambar 19 Vertical-Imperial Valley

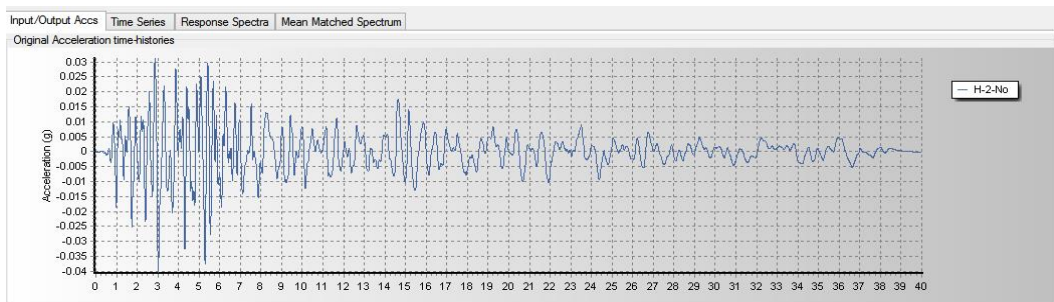


Gambar 20 Respon Spektra Imperial Valley

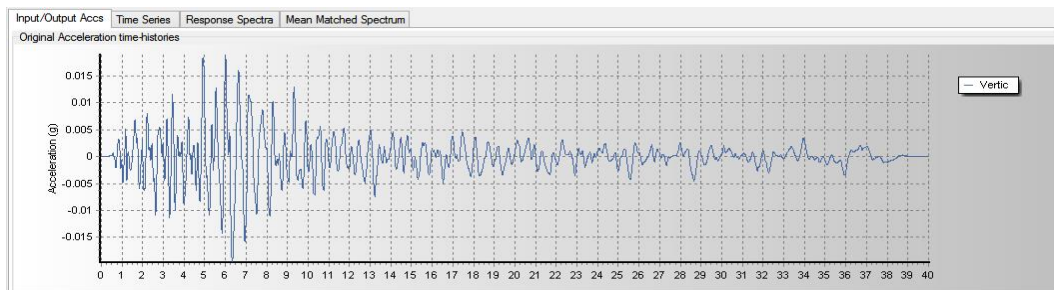
c. Northwest Calif (02)-1941-Ferndale City Hall



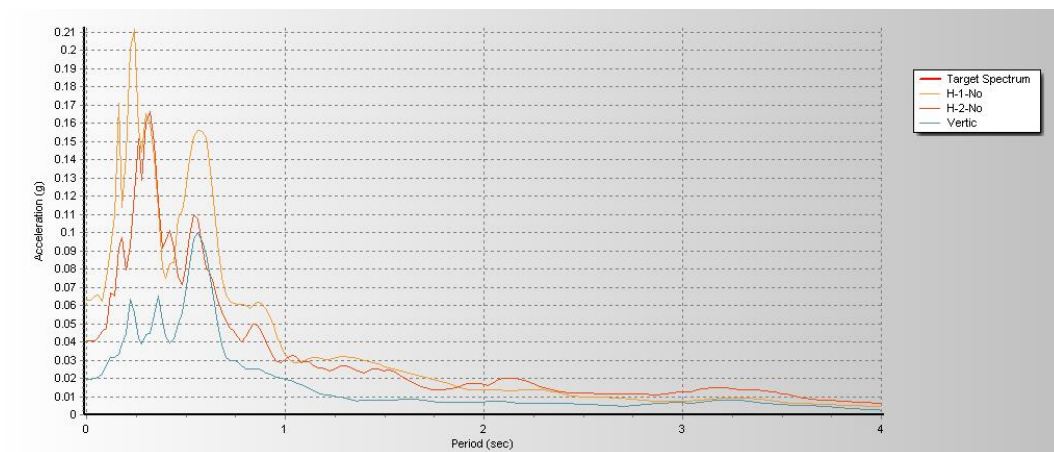
Gambar 21 H-1-Northwest Calif



Gambar 22 H-2-Northwest Calif



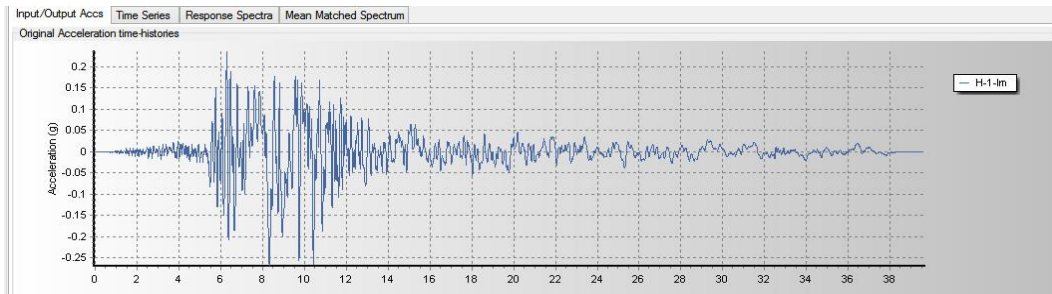
Gambar 23 Vertical-Northwest Calif



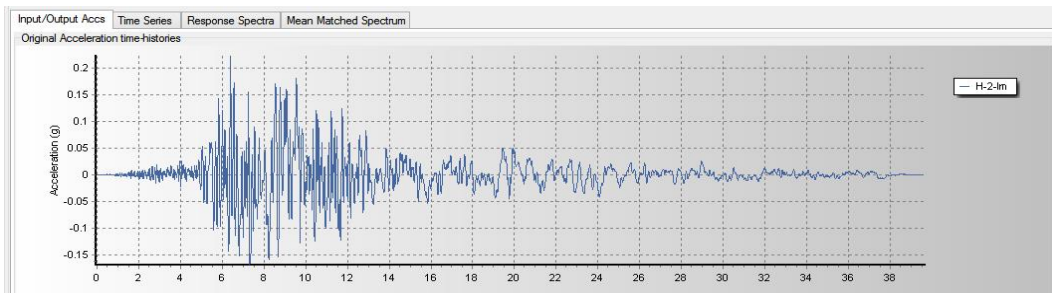
Gambar 24 Respon Spektra Northwest Calif

3. Tanah Lunak (SE)

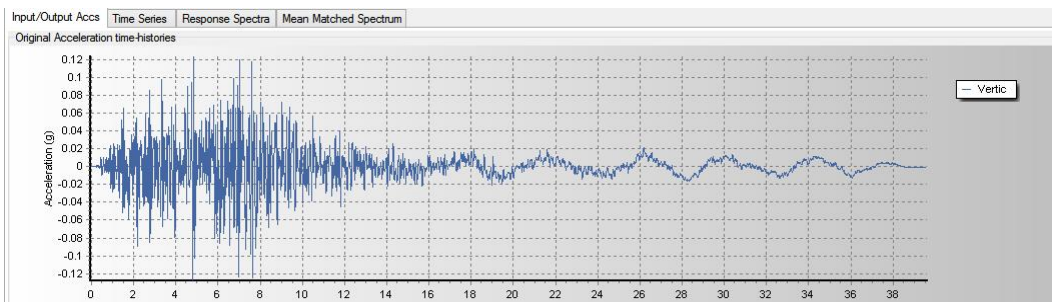
a. Imperial Valley (06)-1979-El Centro Array



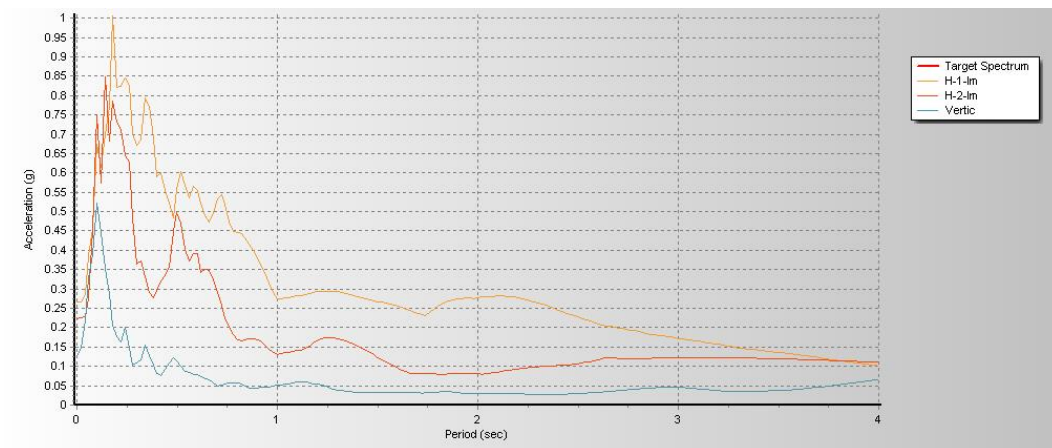
Gambar 25 H-1-Imperial Valley



Gambar 26 H-2-Imperial Valley

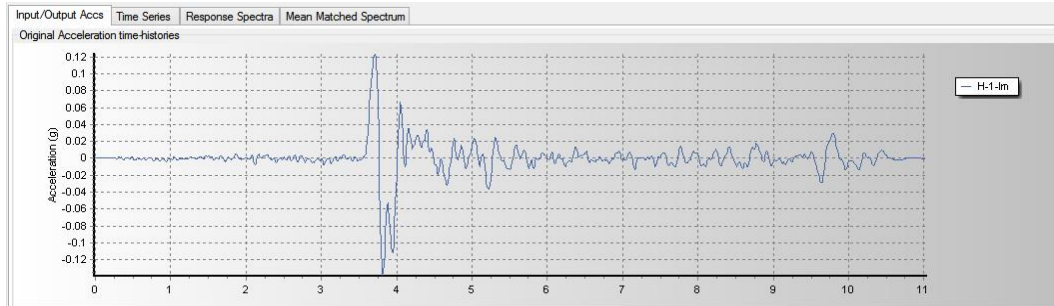


Gambar 27 Vertical-Imperial Valley

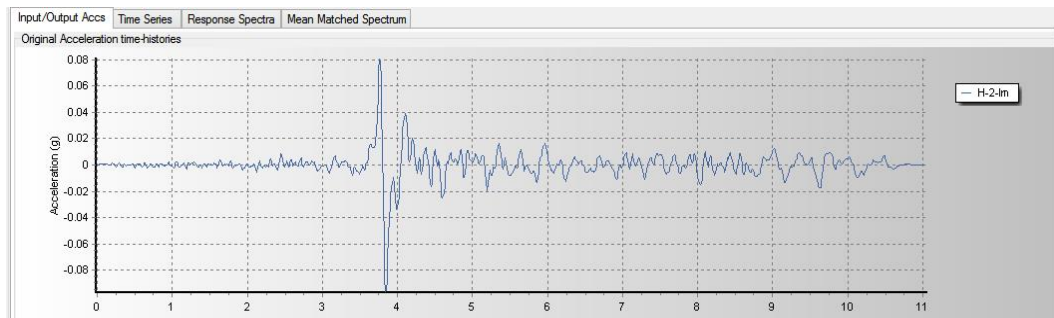


Gambar 28 Respon Spektra Imperial Valley

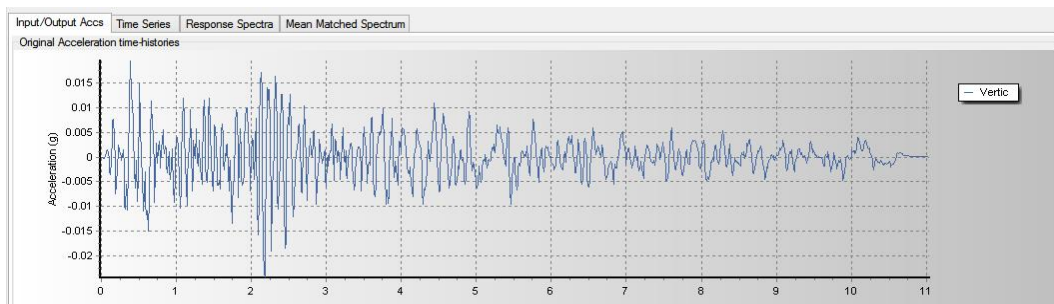
b. Imperial Valley (07)-1979-El Centro Array



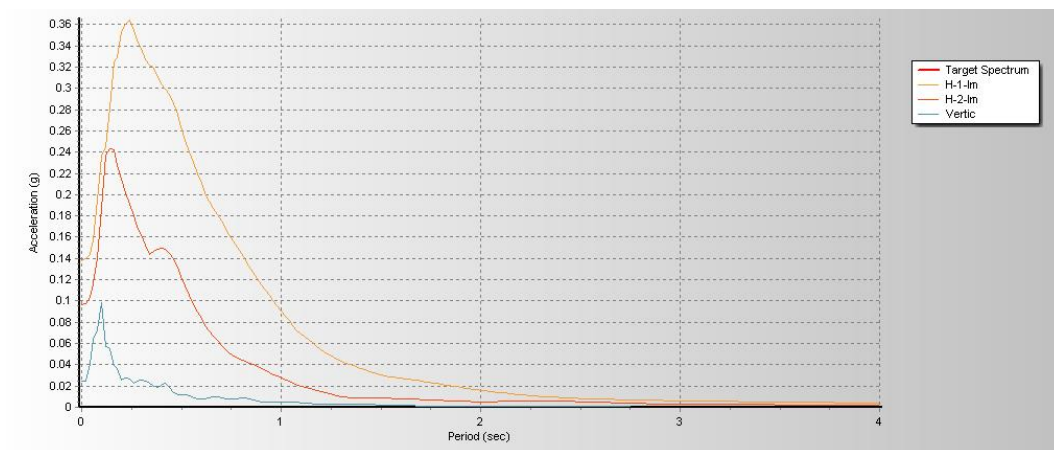
Gambar 29 H-1-Imperial Valley (07)



Gambar 30 H-2-Imperial Valley (07)

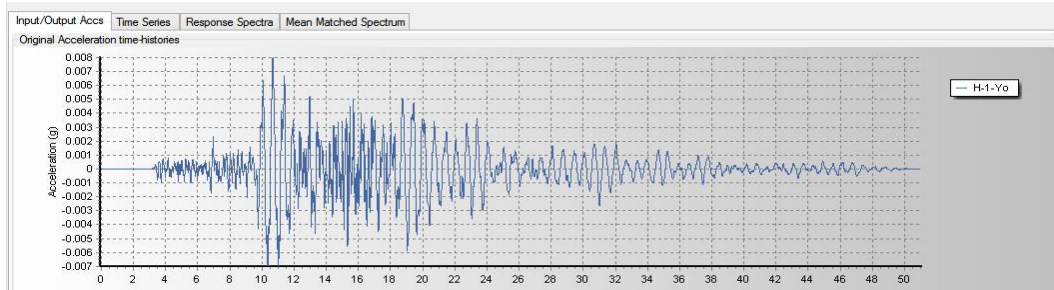


Gambar 31 Vertical-Imperial Valley (07)

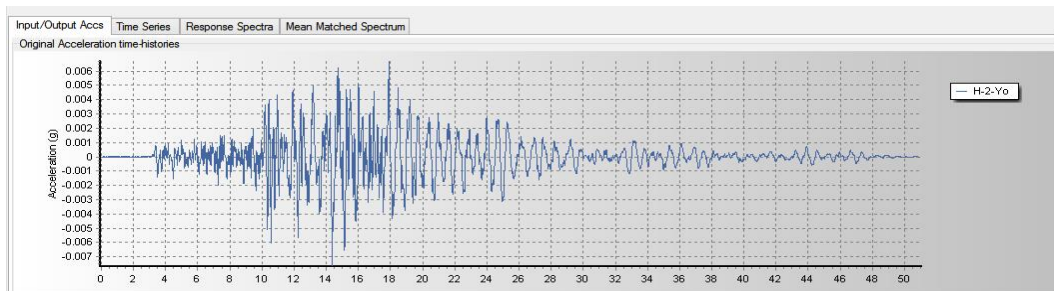


Gambar 32 Respon Spektra Imperial Valley (07)

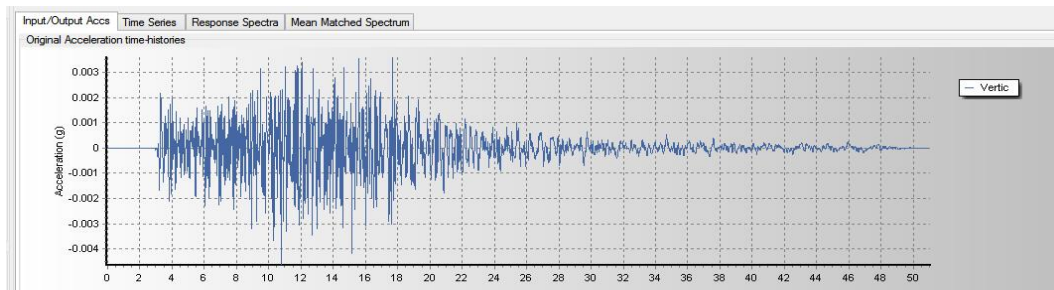
c. Yountville-2000-Larkspur Ferry Terminal



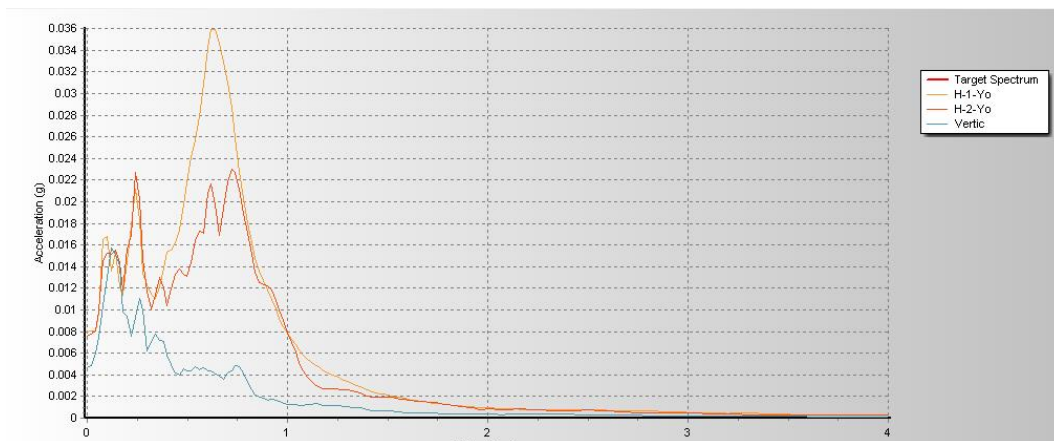
Gambar 33 H-1-YountvilleLKS



Gambar 34 H-2-YountvilleLKS



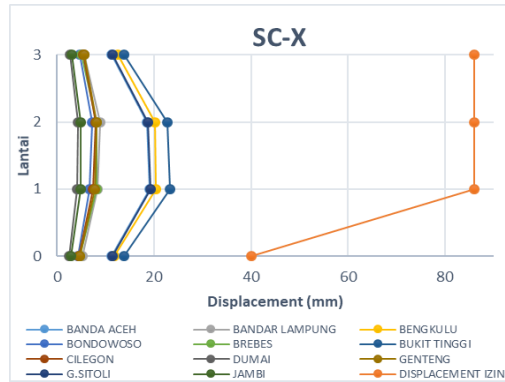
Gambar 35 Vertical-YountvilleLKS



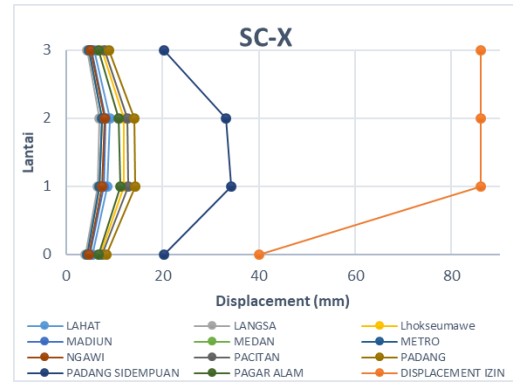
Gambar 36 Respon Spektra YountvilleLKS

Lampiran 4. Grafik Hubungan Antara Perpindahan dengan Jumlah Lantai pada Setiap Klasifikasi Situs Tanah

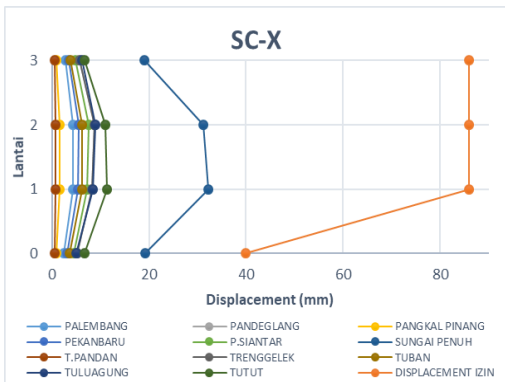
1. Grafik hubungan antara perpindahan dengan jumlah lantai pada klasifikasi situs tanah keras (SC) arah X



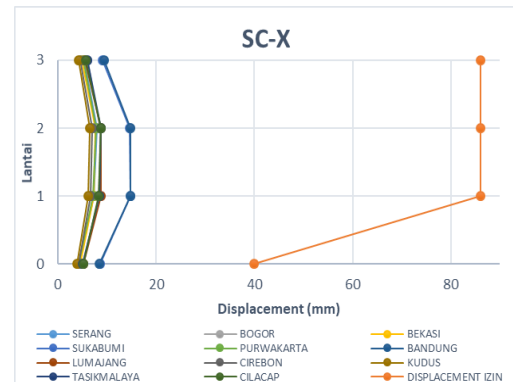
Gambar 1 Grafik perpindahan kelas situs SC arah X



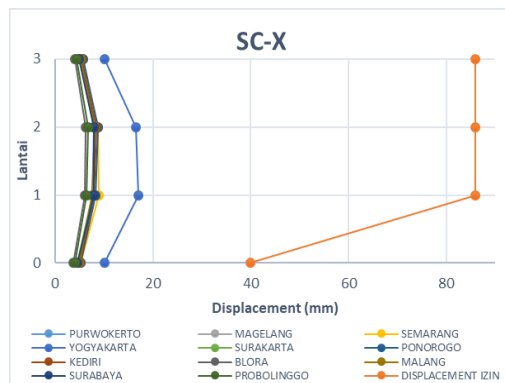
Gambar 2 Grafik perpindahan kelas situs SC arah X



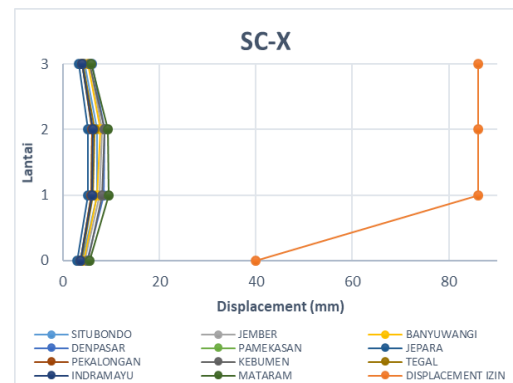
Gambar 3 Grafik perpindahan kelas situs SC arah X



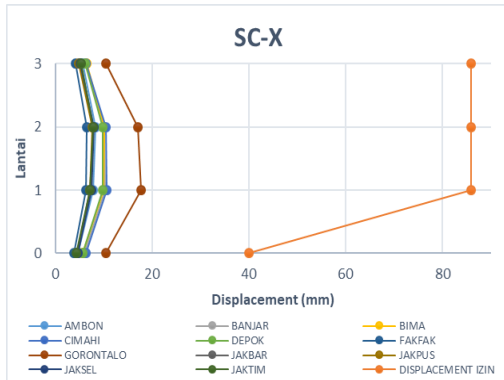
Gambar 4 Grafik perpindahan kelas situs SC arah X



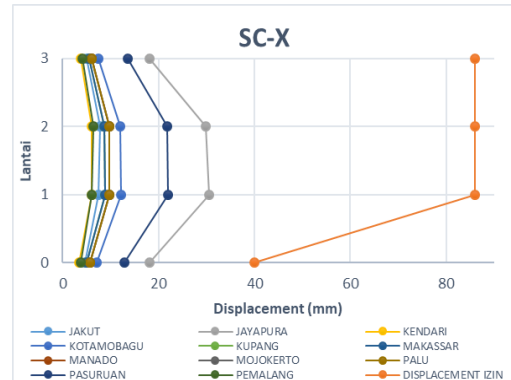
Gambar 5 Grafik perpindahan kelas situs SC arah X



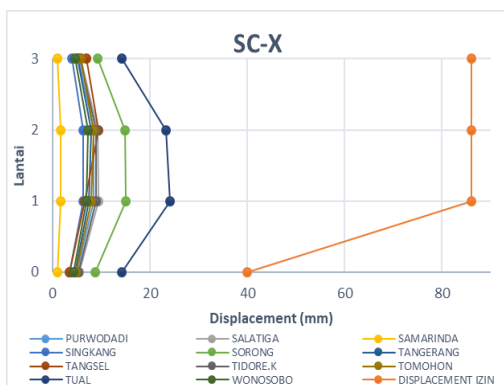
Gambar 6 Grafik perpindahan kelas situs SC arah X



Gambar 7 Grafik perpindahan kelas situs SC arah X

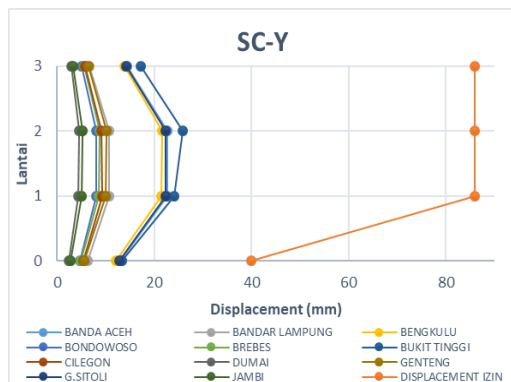


Gambar 8 Grafik perpindahan kelas situs SC arah X

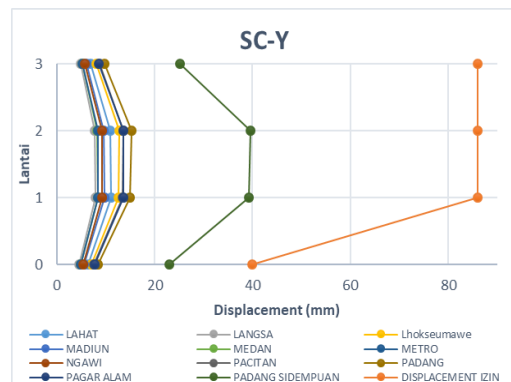


Gambar 9 Grafik perpindahan kelas situs SC arah X

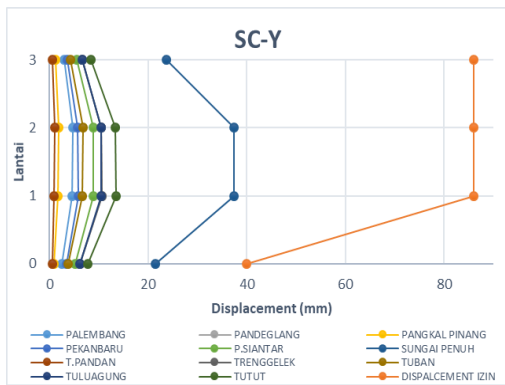
2. Grafik hubungan antara jumlah lantai dengan perpindahan pada klasifikasi situs tanah keras (SC) arah Y



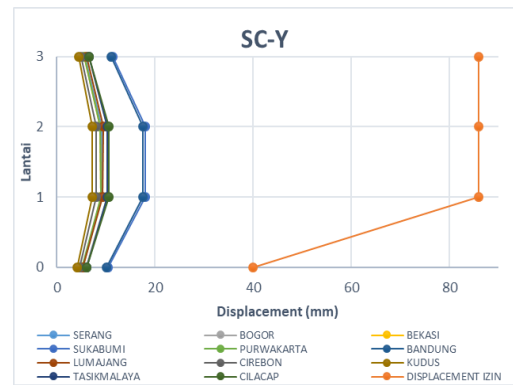
Gambar 10 Grafik perpindahan kelas situs SC arah Y



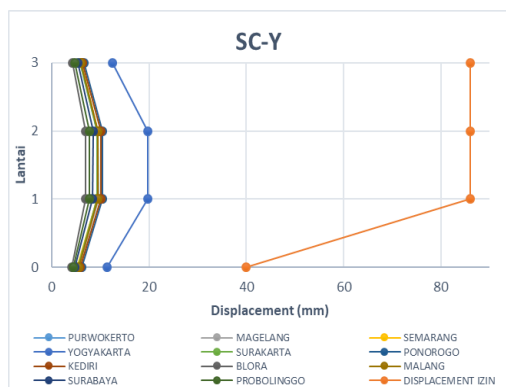
Gambar 11 Grafik perpindahan kelas situs SC arah Y



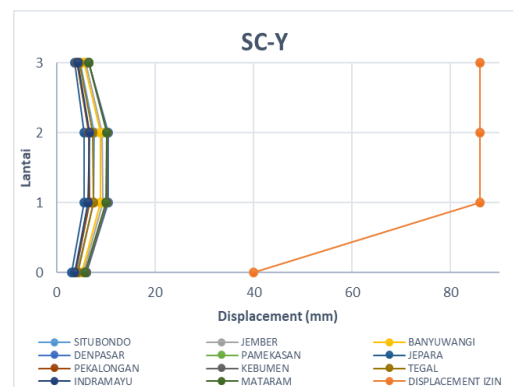
Gambar 12 Grafik perpindahan kelas situs SC arah Y



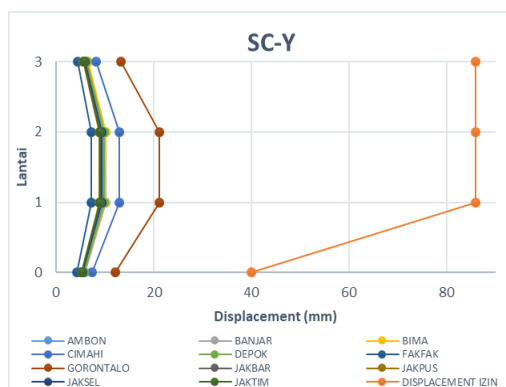
Gambar 13 Grafik perpindahan kelas situs SC arah Y



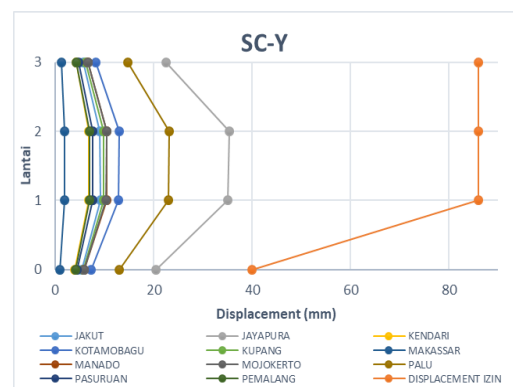
Gambar 14 Grafik perpindahan kelas situs SC arah Y



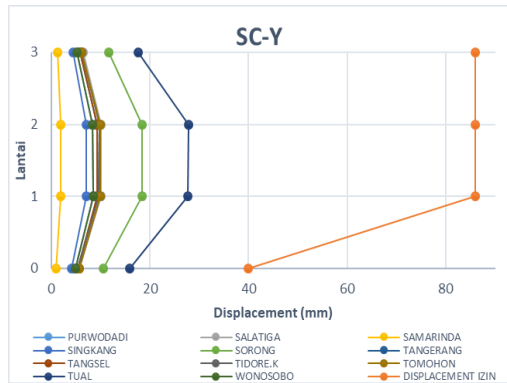
Gambar 15 Grafik perpindahan kelas situs SC arah Y



Gambar 16 Grafik perpindahan kelas situs SC arah Y

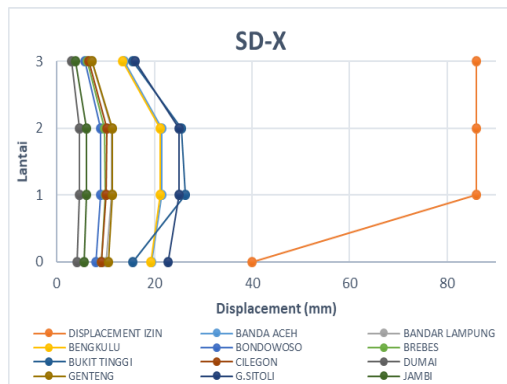


Gambar 17 Grafik perpindahan kelas situs SC arah Y

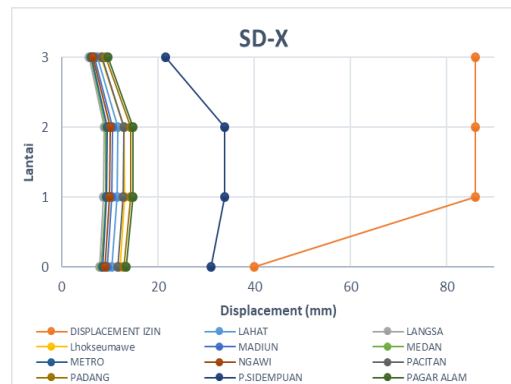


Gambar 18 Grafik perpindahan kelas situs SC arah Y

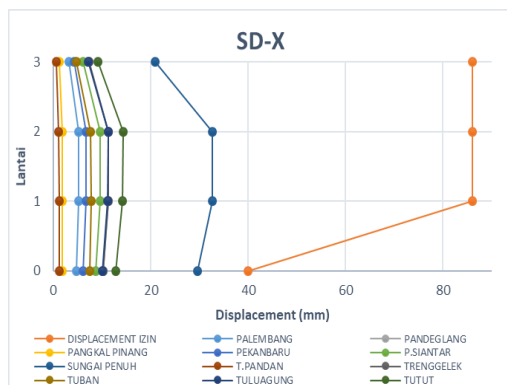
3. Grafik hubungan antara perpindahan dengan jumlah lantai pada klasifikasi situs tanah sedang (SD) arah X



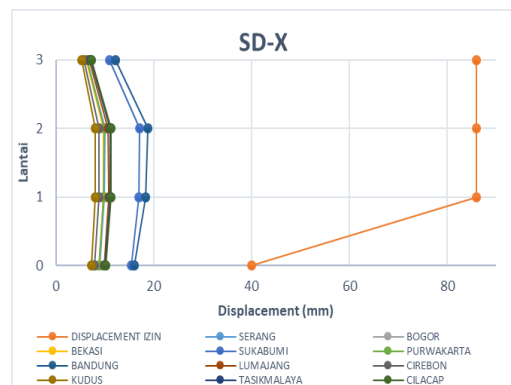
Gambar 19 Grafik perpindahan kelas situs SD arah X



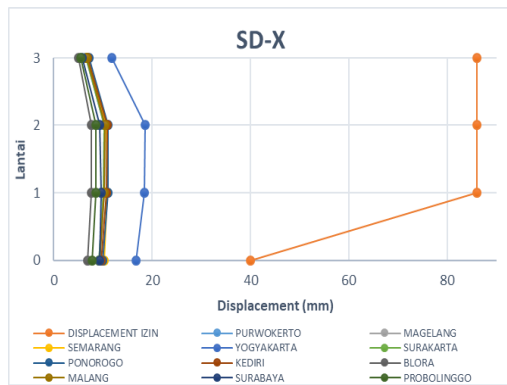
Gambar 20 Grafik perpindahan kelas situs SD arah X



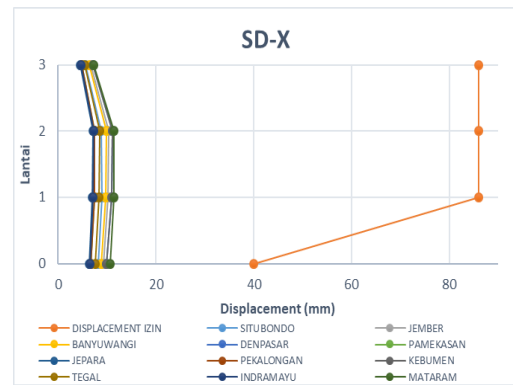
Gambar 21 Grafik perpindahan kelas situs SD arah X



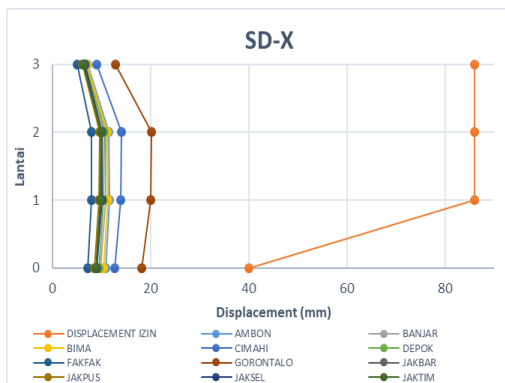
Gambar 22 Grafik perpindahan kelas situs SD arah X



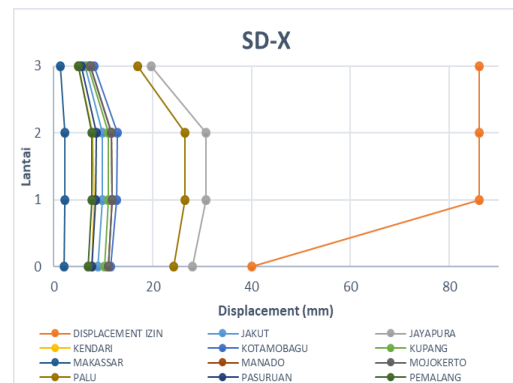
Gambar 23 Grafik perpindahan kelas situs SD arah X



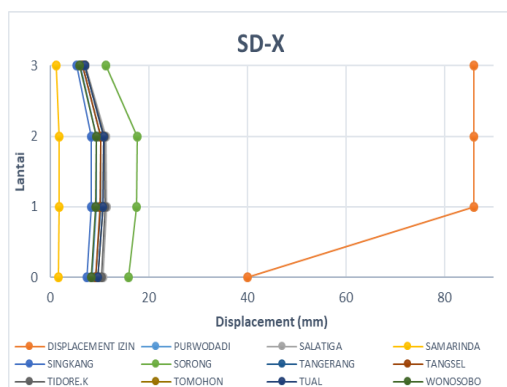
Gambar 24 Grafik perpindahan kelas situs SD arah X



Gambar 25 Grafik perpindahan kelas situs SD arah X

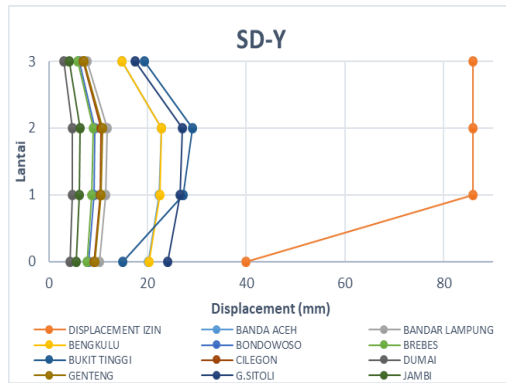


Gambar 26 Grafik perpindahan kelas situs SD arah X

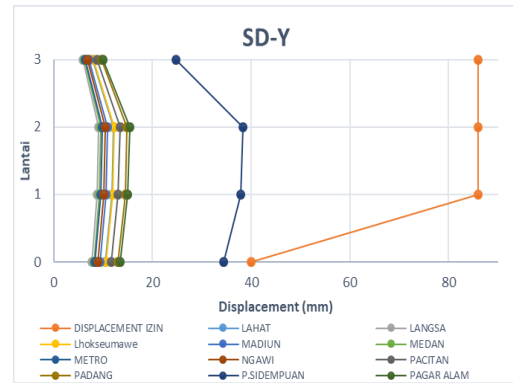


Gambar 27 Grafik perpindahan kelas situs SD arah X

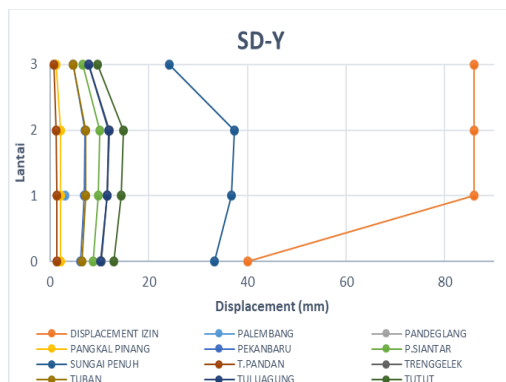
4. Grafik hubungan antara jumlah lantai dengan perpindahan pada klasifikasi situs tanah sedang (SD) arah Y



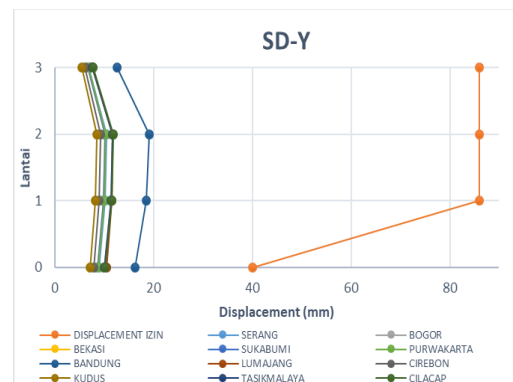
Gambar 28 Grafik perpindahan kelas situs SD arah Y



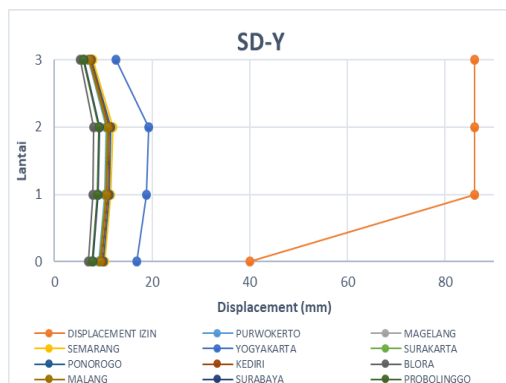
Gambar 29 Grafik perpindahan kelas situs SD arah Y



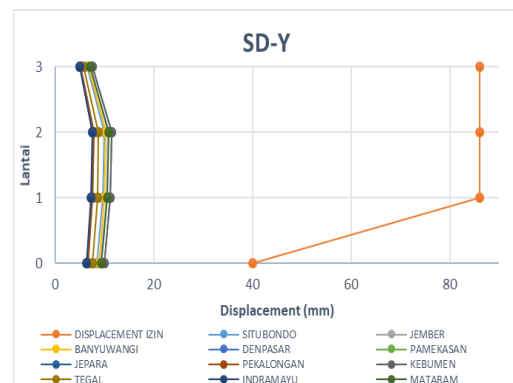
Gambar 30 Grafik perpindahan kelas situs SD arah Y



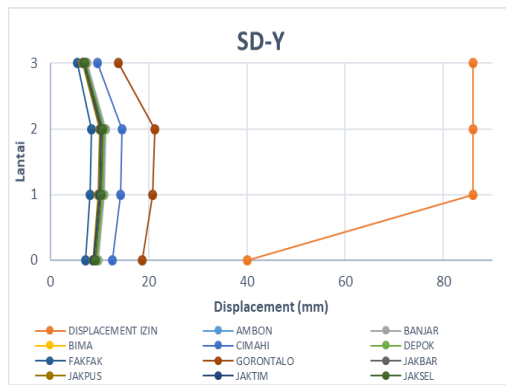
Gambar 31 Grafik perpindahan kelas situs SD arah Y



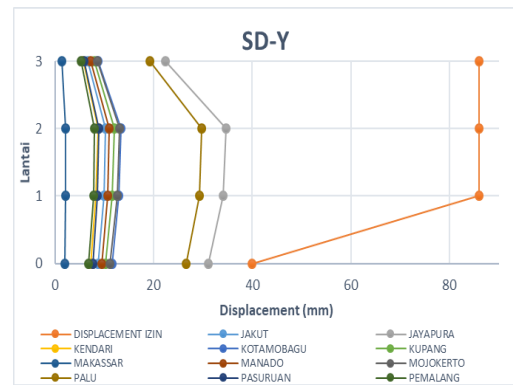
Gambar 32 Grafik perpindahan kelas situs SD arah Y



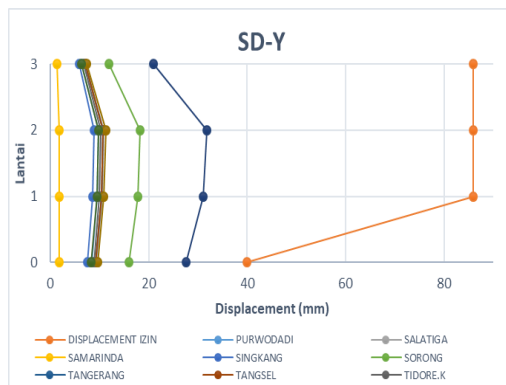
Gambar 33 Grafik perpindahan kelas situs SD arah Y



Gambar 34 Grafik perpindahan kelas situs SD arah Y

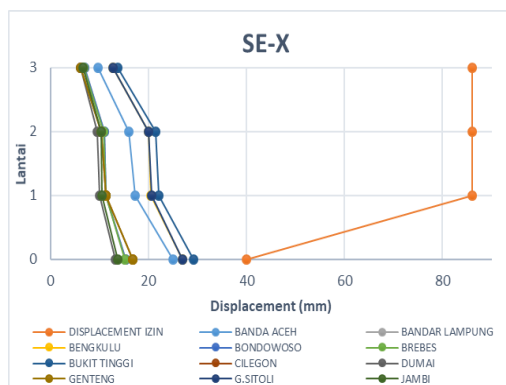


Gambar 35 Grafik perpindahan kelas situs SD arah Y

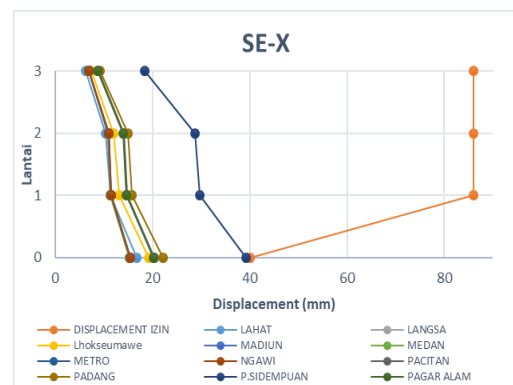


Gambar 36 Grafik perpindahan kelas situs SD arah Y

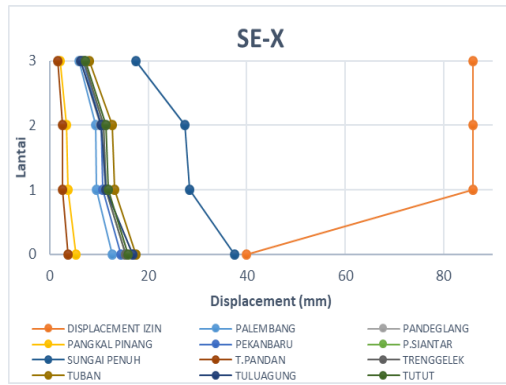
5. Grafik hubungan antara perpindahan dengan jumlah lantai pada klasifikasi situs tanah lunak (SE) arah X



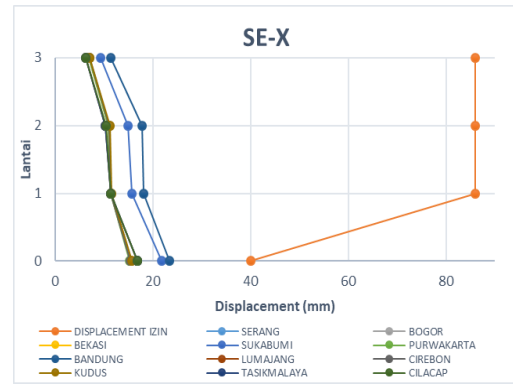
Gambar 37 Grafik perpindahan kelas situs SE arah X



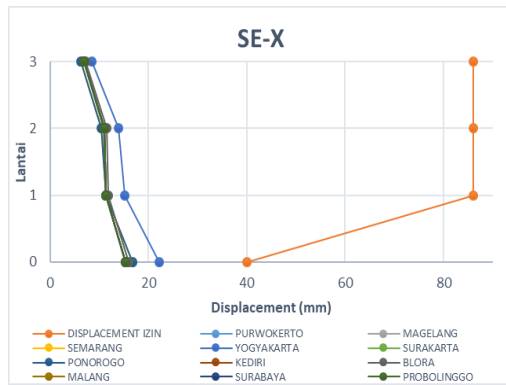
Gambar 38 Grafik perpindahan kelas situs SE arah X



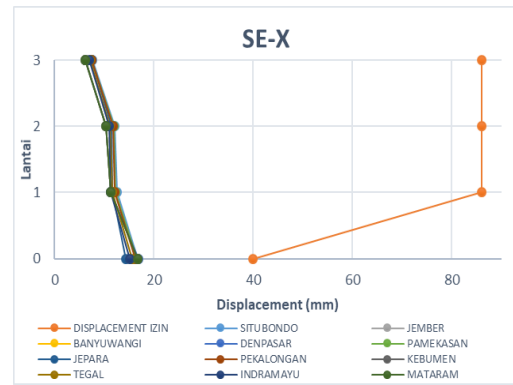
Gambar 39 Grafik perpindahan kelas situs SE arah X



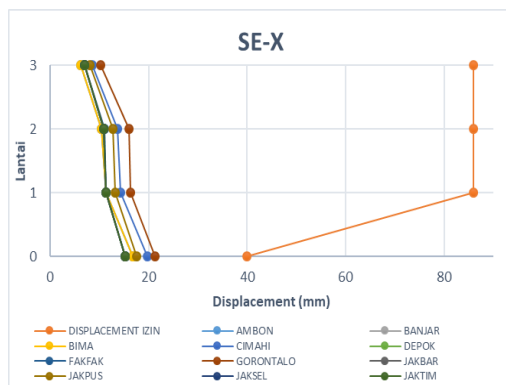
Gambar 40 Grafik perpindahan kelas situs SE arah X



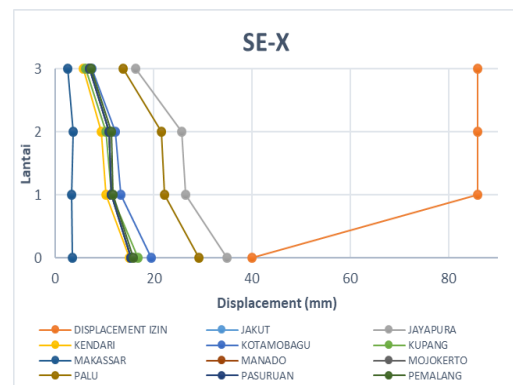
Gambar 41 Grafik perpindahan kelas situs SE arah X



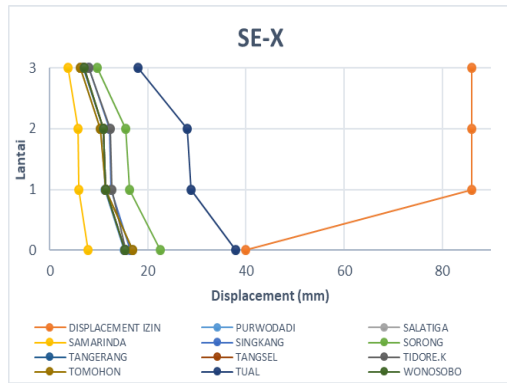
Gambar 42 Grafik perpindahan kelas situs SE arah X



Gambar 43 Grafik perpindahan kelas situs SE arah X

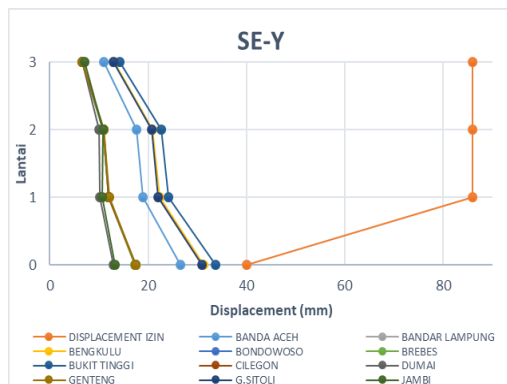


Gambar 44 Grafik perpindahan kelas situs SE arah X

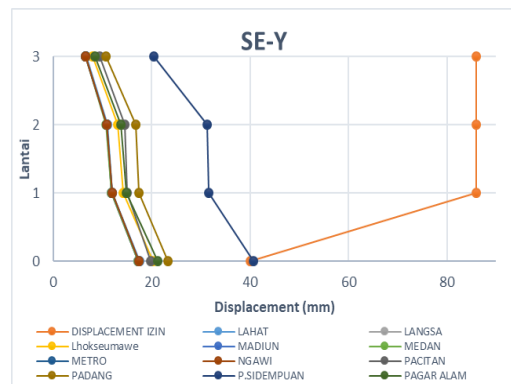


Gambar 45 Grafik perpindahan kelas situs SE arah X

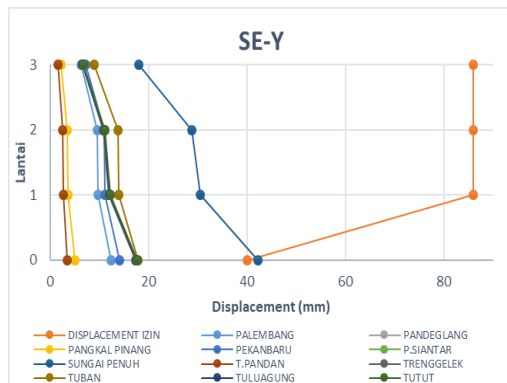
6. Grafik hubungan antara jumlah lantai dengan perpindahan pada klasifikasi situs tanah lunak (SE) arah Y



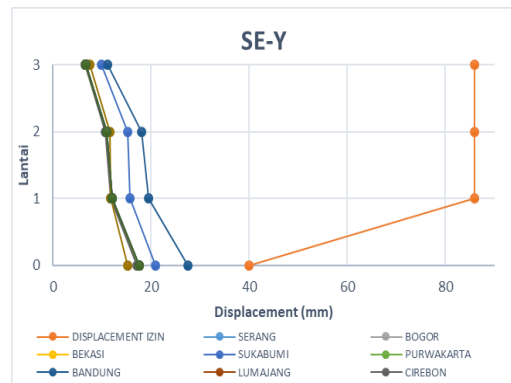
Gambar 46 Grafik perpindahan kelas situs SE arah Y



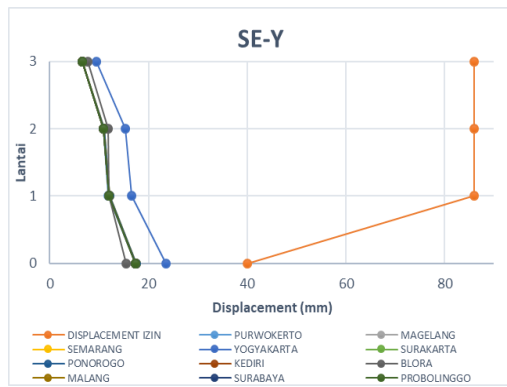
Gambar 47 Grafik perpindahan kelas situs SE arah Y



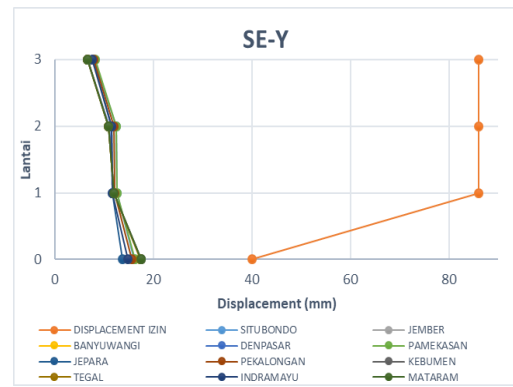
Gambar 48 Grafik perpindahan kelas situs SE arah Y



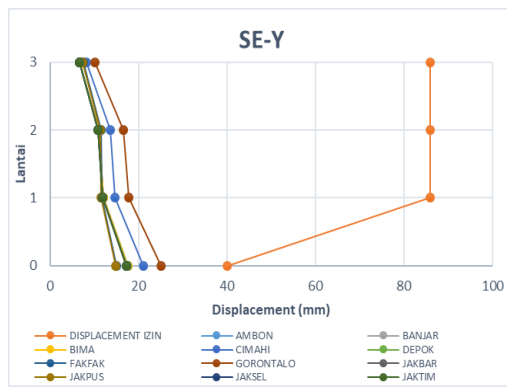
Gambar 49 Grafik perpindahan kelas situs SE arah Y



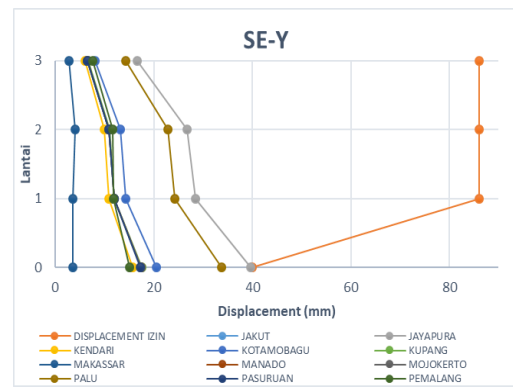
Gambar 50 Grafik perpindahan kelas situs SE arah Y



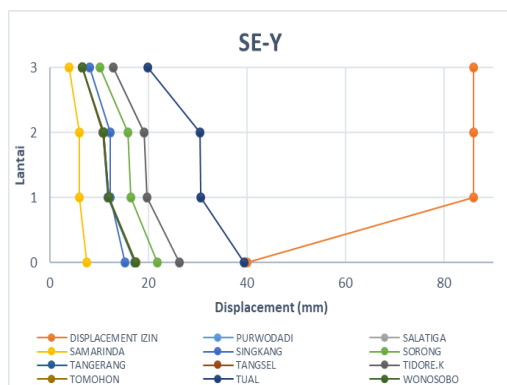
Gambar 51 Grafik perpindahan kelas situs SE arah Y



Gambar 52 Grafik perpindahan kelas situs SE arah Y



Gambar 53 Grafik perpindahan kelas situs SE arah Y



Gambar 54 Grafik perpindahan kelas situs SE arah Y