

LAMPIRAN

Lampiran 1

Sample Perusahaan

NO	Kode Saham	Nama Emiten	Tahun
1	ROTI	Nippon Indosari Corpindo Tbk / Sari Roti	2010
2	SKYB	Skybee Tbk	2010
3	BIPI	Benakat Integra Tbk	2010
4	GOLD	Visi Telekomunikasi Infrastruktur Tbk	2010
5	GREN	Evergreen Invesco Tbk	2010
6	ICBP	Indofood CBP Sukses Makmur Tbk	2010
7	BUVA	Bukit Uluwatu Villa Tbk	2010
8	APLN	Agung Podomoro Land Tbk	2010
9	WINS	Wintermar Offshore Marine Tbk	2010
10	MIDI	Midi Utama Indonesia Tbk	2010
11	MFMI	Multifiling Mitra Indonesia Tbk	2010
12	EMTK	Elang Mahkota Teknologi Tbk	2010
13	KRAS	Krakatau Steel (Persero) Tbk	2010
14	IPOL	Indopoly Swakarsa Industry Tbk	2010
15	VIVA	Visi Media Asia Tbk	2011
16	MTLA	Metropolitan Land Tbk	2011
17	SRAJ	Sejahtera Raya Anugrah Jaya Tbk	2011
18	EMDE	Megapolitan Developments Tbk	2011
19	MBTO	Martina Berto Tbk	2011
20	GIAA	Garuda Indonesia (Persero) Tbk	2011
21	MBSS	Mitrabahtera Segara Sejati Tbk	2011
22	JAWA	Jaya Agra Wattie Tbk	2011
23	SDMU	Sidomulyo Selaras Tbk	2011
24	SMRU	SMR Utama Tbk	2011
25	GEMS	Golden Energy Mines Tbk	2011
26	ERAA	Erajaya Swasembada Tbk	2011
27	BAJA	Saranacentral Bajatama Tbk	2011
28	GWSA	Greenwood Sejahtera Tbk	2011
29	ASSA	Adi Sarana Armada Tbk	2012
30	TAXI	Express Transindo Utama Tbk	2012
31	PALM	Provident Agro Tbk	2012
32	ALTO	TRI Banyan Tirta Tbk	2012

33	MSKY	MNC SKY Vision Tbk	2012
34	TELE	Tiphone Mobile Indonesia Tbk	2012
35	PADI	Minna Padi Investama Tbk	2012
36	TRIS	Trisula International Tbk	2012
37	WIIM	Wismilak Inti Makmur Tbk	2012
38	WSKT	Waskita Karya (Persero) Tbk	2012
39	BEST	Bekasi Fajar Industrial Estate Tbk	2012
40	RANC	Supra Boga Lestari Tbk	2012
41	GLOB	Global Teleshop Tbk	2012
42	GAMA	Gading Development Tbk	2012
43	IBST	Inti Bangun Sejahtera Tbk	2012
44	NIRO	Nirvana Development Tbk	2012
45	NELY	Pelayaran Nelly Dwi Putri Tbk	2012
46	SSMS	Sawit Sumbermas Sarana Tbk	2013
47	DYAN	Dyandra Media International Tbk	2013
48	SRIL	Sri Rejeki Isman Tbk	2013
49	KRAH	Grand Kartech Tbk	2013
50	ACST	Acset Indonusa Tbk	2013
51	NRCA	Nusa Raya Cipta Tbk	2013
52	ECII	Electronic City Indonesia Tbk	2013
53	SILO	Siloam International Hospitals Tbk	2013
54	ISSP	Steel Pipe Industry of Indonesia Tbk / SPINDO	2013
55	MPMX	Mitra Pinasthika Mustika Tbk	2013
56	DSNG	Dharma Satya Nusantara Tbk	2013
57	SRTG	Saratoga Investama Sedaya Tbk	2013
58	MLPT	Multipolar Technology Tbk	2013
59	VICO	Victoria Investama Tbk	2013
60	APII	Arita Prima Indonesia Tbk	2013
61	SIDO	Industri Jamu dan Farmasi Sido Muncul Tbk	2013
62	IMPC	Impack Pratama Industri Tbk	2014
63	BPII	Batavia Prosperindo Internasional Tbk	2014
64	BIRD	Blue Bird Tbk	2014
65	CINT	Chitose Internasional Tb	2014
66	LINK	Link Net Tbk	2014
67	DAJK	Dwi Aneka Jaya Kemasindo Tbk	2014
68	BALI	Bali Towerindo Sentra Tbk	2014
69	WTON	Wijaya Karya Beton Tbk	2014
70	BLTZ	Graha Layar Prima Tbk	2014

71	MDIA	Intermedia Capital Tbk	2014
72	LRNA	Eka Sari Lorena Transport Tbk	2014
73	TARA	Sitara Propertindo Tbk	2014
74	PPRO	PP Properti Tbk	2015
75	MMLP	Mega Manunggal Property Tbk	2015
76	ATIC	Anabatic Technologies Tbk	2015
77	DPUM	Dua Putra Utama Makmur Tbk	2015
78	BIKA	Binakarya Jaya Abadi Tbk	2015
79	MIKA	Mitra Keluarga Karyasehat Tbk	2015
80	BOLT	Garuda Metalindo Tbk	2015
81	KINO	Kino Indonesia Tbk	2015
82	IDPR	Indonesia Pondasi Raya Tbk	2015
83	WSBP	Waskita Beton Precast Tbk	2016
84	MTRA	Mitra Pemuda Tbk	2016
85	MARI	Mahaka Radio Integra Tbk	2016
86	JGLE	Graha Andrasenta Propertindo Tbk	2016
87	OASA	Protech Mitra Perkasa Tbk	2016
88	PBSA	Paramita Bangun Sarana Tbk	2016
89	BOGA	Bintang Oto Global Tbk	2016
90	AGII	Aneka Gas Industri Tbk	2016
91	PRDA	Prodia Widyahusada Tbk	2016
92	IPCM	Jasa Armada Indonesia Tbk	2017
93	PBID	Panca Budi Idaman Tbk	2017
94	WEGE	Wijaya Karya Bangunan Gedung Tbk	2017
95	MCAS	M Cash Integritas Tbk	2017
96	MDKI	Emdeki Utama Tbk	2017
97	MPOW	Megapower Makmur Tbk	2017
98	MAPB	MAP Boga Adiperkasa Tbk	2017
99	CLEO	Sariguna Primatirta Tbk	2017
100	KMTR	Kirana Megatara Tbk	2017
101	HRTA	Hartadinata Abadi Tbk	2017
102	WOOD	Integra Indocabinet Tbk	2017
103	HOKI	Buyung Poetra Sembada Tbk	2017
104	MARK	Mark Dynamics Indonesia Tbk	2017
105	BELL	Trisula Textile Industries Tbk	2017
106	CAMP	Campina Ice Cream Industry Tbk	2017
107	CARS	Bintraco Dharma Tbk	2017
108	MINA	Sanurhasta Mitra Tbk	2017

109	FINN	First Indo American Leasing Tbk	2017
110	FIRE	Alfa Energi Investama Tbk	2017
111	MABA	Marga Abhinaya Abadi Tbk	2017
112	NASA	Ayana Land International Tbk	2017
113	TGRA	Terregra Asia Energy Tbk	2017
114	ZINC	Kapuas Prima Coal Tbk	2017
115	CSIS	Cahayasakti Investindo Sukses Tbk	2017
116	TOPS	Totalindo Eka Persada Tbk	2017
117	PPRE	PP Presisi Tbk	2017
118	PORT	Nusantara Pelabuhan Handal Tbk	2017

Lampiran 2

Data outlier

No	Kode saham	LEVT	MBT-1	PROBT-1	ATANGT-1	SIZET-1
1	PTPP	OUTLIYER				
2	ROTI	0.19852154	0.640867742	0.231978	0.589896	11.68656
3	SKYB	0.534290494	2.117403309	0.181392	0.058386	11.4607
4	BIPI	0.281750735	1.392346266	0.012217	0.004792	11.19919
5	GOLD	0.178440867	0.000259053	0.165524	0.371651	10.52221
6	GREN	0.160580501	1.043958025	0.004373	0.807326	11.01934
7	ICBP	0.299306812	1.967359951	0.029751	0.213269	12.60293
8	BUVA	0.478167453	0.000252726	0.014393	0.076543	10.6616
9	APLN	0.453389109	0.042621217	0.01597	0.398113	11.93245
10	WINS	0.474145438	7.46014E-05	0.126485	0.758207	11.59575
11	MIDI	0.66270239	0.00027069	0.008093	0.356207	11.89907
12	MFMI	0.240740055	0.003448608	0.156356	0.581436	10.61255
13	EMTK	0.275998519	0.939972183	0.066173	0.001483	7.790581
14	KRAS	0.463972169	1.154764394	0.036626	0.264065	13.22823
15	IPOL	0.50633727	0.030273368	0.076768	0.695964	12.08998
16	VIVA	0.340126467	0.000374551	-0.00521	0.203111	11.94895
17	SUPR	OUTLIYER				
18	MTLA	0.218184794	1.72052086	0.077422	0.108045	11.5207
19	SRAJ	0.24841282	1.031416002	0.011409	0.948221	11.1737
20	EMDE	0.409285468	1.843971829	0.050083	0.049379	11.21051
21	MBTO	0.260547052	4.525364755	0.145948	0.159296	11.75296
22	GIAA	0.580946846	6.075956239	0.028086	0.38389	13.26448

23	MBSS	0.399410028	2.166065581	0.104294	0.860496	11.8827
24	JAWA	0.41592383	0.000435061	0.129213	0.198181	11.6164
25	SDMU	0.120489384	1.899845349	0.083384	0.70523	11.00821
26	STAR	OUTLIYER				
27	SMRU	0.123492802	0.000857753	-0.1102	0.380329	10.37767
28	GEMS	0.144574814	21.88272066	0.036423	0.097025	11.96713
29	ERAA	0.26697916	0.000491691	0.230911	0.048136	12.66638
30	BAJA	0.651086274	0.77393418	0.01322	0.408184	11.84931
31	GWSA	0.299695755	3.25437E-05	0.06099	0.002218	10.97477
32	ASSA	0.652463412	0.000311411	0.020542	0.893286	11.7539
33	TAXI	0.614746806	3.64976794	0.081856	0.79963	11.52938
34	PALM	0.728726482	5.90164E-05	0.013006	0.779224	11.60159
35	ALTO	0.421584991	0.23373626	0.020571	0.554934	11.11236
36	MSKY	0.542273038	9.860518393	0.031035	0.529582	12.24001
37	TELE	0.184651745	2.521063075	0.173689	0.065193	12.84437
38	PADI	0.134986484	1.700594148	0.05393	0.110735	10.3531
39	TRIS	0.337726647	1.5404061	0.154764	0.001925	11.67221
40	WIIM	0.456364683	0.336010442	0.20064	0.210238	11.96625
41	WSKT	0.760098414	0.011028303	0.064861	0.037607	12.86178
42	BEST	0.225591193	1.329807064	0.086699	0.04503	11.67757
43	RANC	0.369726699	0.000361522	0.069611	0.28505	11.94956
44	GLOB	0.596332498	0.006402283	0.115886	0.026869	12.26981
45	GAMA	0.167309063	0.203238588	0.004046	0.00248	10.7488
46	IBST	0.420868732	0.00207616	0.048132	0.062899	10.63291
47	NIRO	0.321087612	0.209517751	5.89E-05	0.001376	9.491246
48	NELY	0.266823873	0.118144054	0.19809	0.809625	11.27102
49	SSMS	0.374305265	5.930270397	0.362022	0.308432	12.27422
50	DYAN	0.440044902	1.891550975	0.065888	0.555325	11.79532
51	SAME	OUTLIYER				
52	SRIL	0.585117695	0.488246346	0.07561	0.50406	12.66293
53	KRAH	0.529387554	0.000146053	0.092718	0.159731	11.38704
54	ACST	0.568345191	0.000458271	0.095831	0.178309	11.82601
55	NRCA	0.51670965	0.000101433	0.186142	0.08887	12.30627
56	ECII	0.166785179	17.94677295	0.314659	0.249249	12.15551
57	SILO	0.369806281	36.78863074	0.048556	0.545504	12.25239
58	IMJS	OUTLIYER				
59	ISSP	0.5597075	1.644791469	0.045422	0.238048	12.49033
60	MPMX	0.432869249	0.001050782	0.063824	0.195391	13.03249

61	DSNG	0.716512513	0.242728863	0.067106	0.319257	12.53285
62	SRTG	0.341901007	0.000138014	0.150036	0.068763	12.37256
63	MLPT	0.64413236	3.705395339	0.042984	0.216867	12.1263
64	VICO	0.075630139	0.471443213	0.126319	0.008463	10.73699
65	APII	0.386548063	3.65821E-05	0.157699	0.203738	11.18667
66	SIDO	0.11046933	0.000502357	0.238783	0.20539	12.3787
67	IMPC	0.432869249	2.18629997	0.150566	0.264731	12.09399
68	BPII	0.393645167	0.978795219	0.139996	0.0186	10.88841
69	BIRD	0.497583183	11.46343673	0.190752	0.866246	12.59339
70	CINT	0.201171352	1.247860818	0.196362	0.441958	11.45959
71	LINK	0.189002153	1.932555618	0.151084	0.711594	12.22131
72	DAJK	0.356770215	1.52239291	0.081429	0.291199	11.71022
73	BALI	0.544530272	0.87971395	0.18274	0.01137	11.01366
74	WTON	0.41462847	5.390690697	0.112608	0.346921	12.42222
75	BLTZ	0.214726129	15.82190319	-0.01924	0.407041	11.47849
76	MDIA	0.251150149	7.313720123	0.188857	0.382946	11.92194
77	LRNA	0.237578748	1.24506243	0.013015	0.748466	11.18841
78	TARA	0.210503239	1.016045844	0.010107	0.00396	11.04527
79	PPRO	0.526676568	1.638111801	0.047989	0.07958	11.74427
80	MMLP	0.20387897	1.616183833	0.144663	0.000985	11.15204
81	ATIC	0.692316343	2.567364295	0.056284	0.125556	12.40994
82	DPUM	0.213562654	4.8317E-05	0.15492	0.343411	11.48003
83	DMAS	OUTLIYER				
84	BIKA	0.688049679	0.000117387	0.098782	0.104367	11.9811
85	MKNT	OUTLIYER				
86	MIKA	0.118510945	13.28649092	0.308596	0.355419	12.28903
87	BOLT	0.172093586	0.000392965	0.176522	0.451003	11.98311
88	KINO	0.446745741	0.000688422	0.073806	0.466922	12.52367
89	IDPR	0.281505002	3.21296E-05	0.208044	0.379263	12.10261
90	WSBP	0.807839499	3.07461E-07	0.079759	0.227899	12.42231
91	MTRA	0.522496338	1.345568676	0.145233	0.23111	11.52168
92	MARI	0.168940685	3.883012082	0.324675	0.022175	11.00856
93	JGLE	0.426666482	1.796328228	-0.059	0.518993	11.564
94	OASA	0.011309425	0.140991877	0.210448	0.086699	10.40177
95	PBSA	0.348224152	0.000101624	0.233739	0.019705	11.98115
96	BOGA	0.080211416	0.971856438	0.038843	0.366005	11.54839
97	AGII	0.512495122	0.000639561	0.014195	0.769476	12.15425
98	PRDA	0.305244177	0.003859022	0.133231	0.339671	12.07836

99	IPCM	0.259761115	6.54522E-05	0.283769	0.041613	11.91782
100	DWGL	OUTLIYER				
101	PBID	0.276237619	0.000161098	0.141036	0.405592	12.50078
102	WEGE	0.625902593	2.157311479	0.070592	0.015429	12.28544
103	MCAS	0.313401804	0.000123463	0.23982	0.000175	11.58704
104	MDKI	0.121030467	3.45287E-06	0.246377	0.490378	11.53146
105	MPOW	0.55853553	0.819959839	0.038549	0.918561	10.77288
106	MAPB	0.346106311	0.006826863	0.127232	0.409823	12.21055
107	CLEO	0.549157945	1.015585842	0.102949	0.715603	11.71928
108	KMTR	0.554585544	0.284227712	0.050729	0.215744	12.88602
109	HRTA	0.321440946	1.844364699	0.118826	0.076067	12.34181
110	WOOD	0.502309903	0.909069942	0.0633	0.533071	12.12169
111	HOKI	0.175024977	2.324216932	0.159429	0.480293	12.05952
112	MARK	0.266941226	0.019360993	0.160569	0.43361	11.31644
113	BELL	0.483052852	9.00063E-05	0.030131	0.245074	11.61926
114	CAMP	0.308188335	0.119384307	0.073328	0.21082	11.96873
115	CARS	0.793367935	1.67499393	0.042203	0.108965	12.83189
116	MINA	0.023421478	0.069306279	-0.02801	0.25906	10.01515
117	FINN	0.774689106	0.043839721	0.011922	0.007817	11.18102
118	FIRE	0.509216744	0.001259344	0.024765	0.325915	10.99424
119	MABA	0.685752763	4.28078E-05	-0.06574	0.211168	11.60122
120	NASA	0.170267613	0.103153605	0.000213	0.196796	8.69897
121	TGRA	0.077988937	1.708242583	0.000941	0.707055	10.04276
122	ZINC	0.327676828	0.002381509	-0.05507	0.348095	11.14074
123	CSIS	0.330343289	2.72506741	0.032107	0.005911	10.89194
124	FORZ	OUTLIYER				
125	TOPS	0.645387334	2.441285197	0.105977	0.138123	12.49499
126	PPRE	0.523928271	0.000224712	0.049639	0.562087	11.56965
127	PORT	0.496785501	1.928328078	0.09386	0.441674	12.09253

Lampiran 3

Hasil MB (Market to book)

NO	Kode Saham	Tahun	MV	BV	MB
1	ROTI	2010	1250	449.8918	0.6409
2	SKYB	2010	375	250.022	2.1174033
3	BIPI	2010	140	110.5972	1.3923463
4	GOLD	2010	350	201.0956	2.59E-04
5	GREN	2010	105	100.8623	1.043958
6	ICBP	2010	5395	1529.689	1.96736
7	BUVA	2010	260	160.5315	2.53E-04
8	APLN	2010	365	187.8607	0.0426212
9	WINS	2010	300	0.2967	7.46E-05
10	MIDI	2010	275	130.4561	2.71E-04
11	MFMI	2010	200	138.8503	0.0034486
12	EMTK	2010	720	564.156	0.9399722
13	KRAS	2010	850	589.1547	1.1547644
14	IPOL	2010	105	164.8434	0.0302734
15	VIVA	2011	300	103159.3004	3.75E-04
16	MTLA	2011	240	178.4346	1.7205209
17	SRAJ	2011	120	117.325	1.031416
18	EMDE	2011	250	162.3367	1.8439718
19	MBTO	2011	740	374.3386	4.5253648
20	GIAA	2011	750	333.3393	6.0759562
21	MBSS	2011	1600	961.3691	2.1660656
22	JAWA	2011	500	300.5637	4.35E-04
23	SDMU	2011	225	193.2052	1.8998453
24	SMRU	2011	600	325.556	8.58E-04
25	GEMS	2011	2500	482.8459	21.882721
26	ERAA	2011	1000	740.4835	4.92E-04
27	BAJA	2011	250	130.5738	0.7739342
28	GWSA	2011	250	155.8941	3.25E-05
29	ASSA	2012	390	215.7334	3.11E-04
30	TAXI	2012	560	320.1084	3.6497679
31	PALM	2012	450	180.9542	5.90E-05
32	ALTO	2012	210	121.8851	0.2337363
33	MSKY	2012	1520	320.0658	9.8605184
34	TELE	2012	310	206.3989	2.5210631

35	PADI	2012	395	275.3835	1.7005941
36	TRIS	2012	300	242.5565	1.5404061
37	WIIM	2012	650	312.5447	0.3360104
38	WSKT	2012	380	208.3706	0.0110283
39	BEST	2012	170	189.0799	1.3298071
40	RANC	2012	500	229.6647	3.62E-04
41	GLOB	2012	1150	374.2447	0.0064023
42	GAMA	2012	105	102.6789	0.2032386
43	IBST	2012	1000	1213.7793	0.0020762
44	NIRO	2012	105	102.2147	0.2095178
45	NELY	2012	168	134.7397	0.1181441
46	SSMS	2013	670	243.178	5.9302704
47	DYAN	2013	350	235.0441	1.891551
48	SRIL	2013	240	124.7573	0.4882463
49	KRAH	2013	275	159.5358	1.46E-04
50	ACST	2013	2500	1120.8851	4.58E-04
51	NRCA	2013	850	316.7343	1.01E-04
52	ECII	2013	4050	1262.9842	17.946773
53	SILO	2013	9000	1417.6903	36.788631
54	ISSP	2013	295	269.1986	1.6447915
55	MPMX	2013	1500	984.6763	0.0010508
56	DSNG	2013	1850	791.8786	0.2427289
57	SRTG	2013	5500	3932.119	1.38E-04
58	MLPT	2013	480	236.5785	3.7053953
59	VICO	2013	125	125.8149	0.4714432
60	APII	2013	220	130.7585	3.66E-05
61	SIDO	2013	580	175.0304	5.02E-04
62	IMPC	2014	3800	2037.7399	2.1863
63	BPII	2014	500	600.6418	0.9787952
64	BIRD	2014	6500	1440.0255	11.463437
65	CINT	2014	330	2.9165	1.2478608
66	LINK	2014	1600	997.4064	1.9325556
67	DAJK	2014	470	426.2476	1.5223929
68	BALI	2014	400	537.1044	0.879714
69	WTON	2014	590	255.3825	5.3906907
70	BLTZ	2014	3000	1524.1138	15.821903
71	MDIA	2014	1380	0.3545	7.3137201
72	LRNA	2014	900	781.6878	1.2450624

73	TARA	2014	106	103.8788	1.0160458
74	PPRO	2015	185	179.259	1.6381118
75	MMLP	2015	585	446.4298	1.6161838
76	ATIC	2015	700	374.0762	2.5673643
77	DPUM	2015	550	289.6038	4.83E-05
78	BIKA	2015	1000	1125.8084	1.17E-04
79	MIKA	2015	17000	225.3478	13.286491
80	BOLT	2015	550	324.4925	3.93E-04
81	KINO	2015	3800	1243.6404	6.88E-04
82	IDPR	2015	1280	495.423	3.21E-05
83	WSBP	2016	490	280.9247	3.07E-07
84	MTRA	2016	185	160.7937	1.3455687
85	MARI	2016	750	333.6164	3.8830121
86	JGLE	2016	180	101.5686	1.7963282
87	OASA	2016	190	139.9632	0.1409919
88	PBSA	2016	1200	368.3886	1.02E-04
89	BOGA	2016	103	280.0921	0.9718564
90	AGII	2016	1100	900.2759	6.40E-04
91	PRDA	2016	6500	1351.7511	0.003859
92	IPCM	2017	380	189.9825	6.55E-05
93	PBID	2017	850	703.9544	1.61E-04
94	WEGE	2017	290	180.0814	2.1573115
95	MCAS	2017	1385	149.8811	1.23E-04
96	MDKI	2017	600	421.8913	3.45E-06
97	MPOW	2017	200	179.64	0.8199598
98	MAPB	2017	1680	450.8617	0.0068269
99	CLEO	2017	115	135.4407	1.0155858
100	KMTR	2017	458	206.2066	0.2842277
101	HRTA	2017	300	216.3863	1.8443647
102	WOOD	2017	260	306.0199	0.9090699
103	HOKI	2017	310	202.5449	2.3242169
104	MARK	2017	250	219.5314	0.019361
105	BELL	2017	150	166.1237	9.00E-05
106	CAMP	2017	330	142.3809	0.1193843
107	CARS	2017	1750	1131.9206	1.6749939
108	MINA	2017	105	93.8268	0.0693063
109	FINN	2017	105	116.1731	0.0438397
110	FIRE	2017	500	172.233	0.0012593

111	MABA	2017	112	48.1311	4.30E-05
112	NASA	2017	103	98.0699	0.1031536
113	TGRA	2017	200	130900.8418	1.7082426
114	ZINC	2017	140	94.8141	0.0023815
115	CSIS	2017	300	171.5864	2.7250674
116	TOPS	2017	310	200.9812	2.4412852
117	PPRE	2017	430	238.6622	2.25E-04
118	PORT	2017	535	338.2276	1.9283281

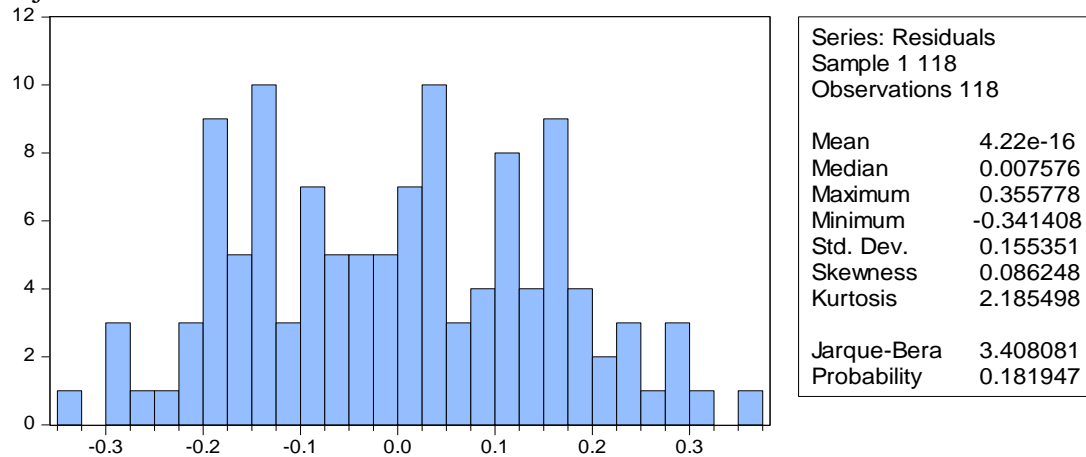
Lampran 4

Analisis Statistik Deskriptif

	LEVT	MB	PROB	ATANG	SIZE
Mean	0.383036	2.038477	0.096284	0.312525	11.65919
Median	0.369750	0.564573	0.077095	0.254155	11.74862
Maximum	0.807800	36.78863	0.362022	0.948221	13.26448
Minimum	0.011300	3.07E-07	-0.110202	0.000175	7.790581
Std. Dev.	0.188785	4.769088	0.087629	0.259488	0.838331
Skewness	0.223839	4.670088	0.601135	0.687607	-1.314002
Kurtosis	2.229064	29.05302	3.248141	2.513785	6.784744
Jarque-Bera	3.907555	3766.160	7.409545	10.46080	104.3842
Probability	0.141738	0.000000	0.024606	0.005351	0.000000
Sum	45.19820	240.5403	11.36152	36.87795	1375.784
Sum Sq. Dev.	4.169871	2661.071	0.898419	7.878083	82.22747
Observations	118	118	118	118	118

Lampiran 5

Uji Normalitas



Lampiran 6

Uji Heteroskedastisitas (Harvey)

Heteroskedasticity Test: Harvey

F-statistic	1.684595	Prob. F(4,113)	0.1584
Obs*R-squared	6.640553	Prob. Chi-Square(4)	0.1561
Scaled explained SS	4.245932	Prob. Chi-Square(4)	0.3737

Test Equation:

Dependent Variable: LRESID2

Method: Least Squares

Date: 12/22/19 Time: 11:30

Sample: 1 118

Included observations: 118

Variable	Coefficient	Std. Error	t-Statistic	Prob.
C	-3.607371	2.314586	-1.558539	0.1219

MB	-0.010143	0.034855	-0.291016	0.7716
PROB	-4.506451	1.928067	-2.337289	0.0212
ATANG	-0.605568	0.638643	-0.948211	0.3450
SIZE	-0.035272	0.202265	-0.174387	0.8619
<hr/>				
R-squared	0.056276	Mean dependent var	-4.662451	
Adjusted R-squared	0.022870	S.D. dependent var	1.783887	
S.E. of regression	1.763371	Akaike info criterion	4.013780	
Sum squared resid	351.3707	Schwarz criterion	4.131182	
Log likelihood	-231.8130	Hannan-Quinn criter.	4.061449	
F-statistic	1.684595	Durbin-Watson stat	2.314393	
Prob(F-statistic)	0.158445			

Lampiran 7

Uji Multikolinearitas

Variance Inflation Factors
Date: 12/22/19 Time: 11:35
Sample: 1 118
Included observations: 118

Variable	Coefficient Variance	Uncentered VIF	Centered VIF
C	0.043052	203.3018	NA
MB	9.76E-06	1.231251	1.039678
PROB	0.029874	2.381900	1.074079
ATANG	0.003278	2.545108	1.033355
SIZE	0.000329	212.1257	1.081860

Lampiran 8

Uji Statistik F

Dependent Variable: LEVT
 Method: Least Squares
 Date: 12/22/19 Time: 11:37
 Sample: 1 118
 Included observations: 118

Variable	Coefficient	Std. Error	t-Statistic	Prob.
C	-0.854667	0.207490	-4.119076	0.0001
MB	-0.006791	0.003125	-2.173272	0.0318
PROB	-0.797353	0.172841	-4.613223	0.0000
ATANG	-0.032727	0.057251	-0.571641	0.5687
SIZE	0.114806	0.018132	6.331698	0.0000
R-squared	0.322840	Mean dependent var		0.383036
Adjusted R-squared	0.298870	S.D. dependent var		0.188785
S.E. of regression	0.158077	Akaike info criterion		-0.810025
Sum squared resid	2.823669	Schwarz criterion		-0.692623
Log likelihood	52.79146	Hannan-Quinn criter.		-0.762356
F-statistic	13.46837	Durbin-Watson stat		2.051916
Prob(F-statistic)	0.000000			



**PERPUSTAKAAN
UNIVERSITAS MUHAMMADIYAH YOGYAKARTA
Terakreditasi "A" (Perpustakaan Nasional RI No: 29/1/ee/XII.2014)**

Perpustakaan Universitas Muhammadiyah Yogyakarta menyatakan bahwa Skripsi atas:

Nama : RADYTIA BIMANTARA PRATAMA TAQWA
 NIM : 20160410106
 Prodi : Manajemen/FEB
 Judul : **UJI EMPIRIS PADA MARKET TIMING THEORY
 TERHADAP LEVERAGE
 (Studi Perusahaan IPO Non Keuangan yang Terdaftar di Bursa
 Efek Indonesia (BEI) pada tahun 2010-2017)**
 Dosen Pembimbing : Dr. Wihandaru SP.M.Si.

**Telah dilakukan tes Turnitin filter 1%, dengan indeks similaritasnya sebesar 16%.
 Semoga surat keterangan ini dapat digunakan sebagaimana mestinya.**

Mengetahui
 Ka. Ur. Pengelolaan

Laela Niswatin, S.I.Pust

Yogyakarta, 12/20/2019
 yang melaksanakan pengecekan

Ikram Al- Zein, S.Kom.I