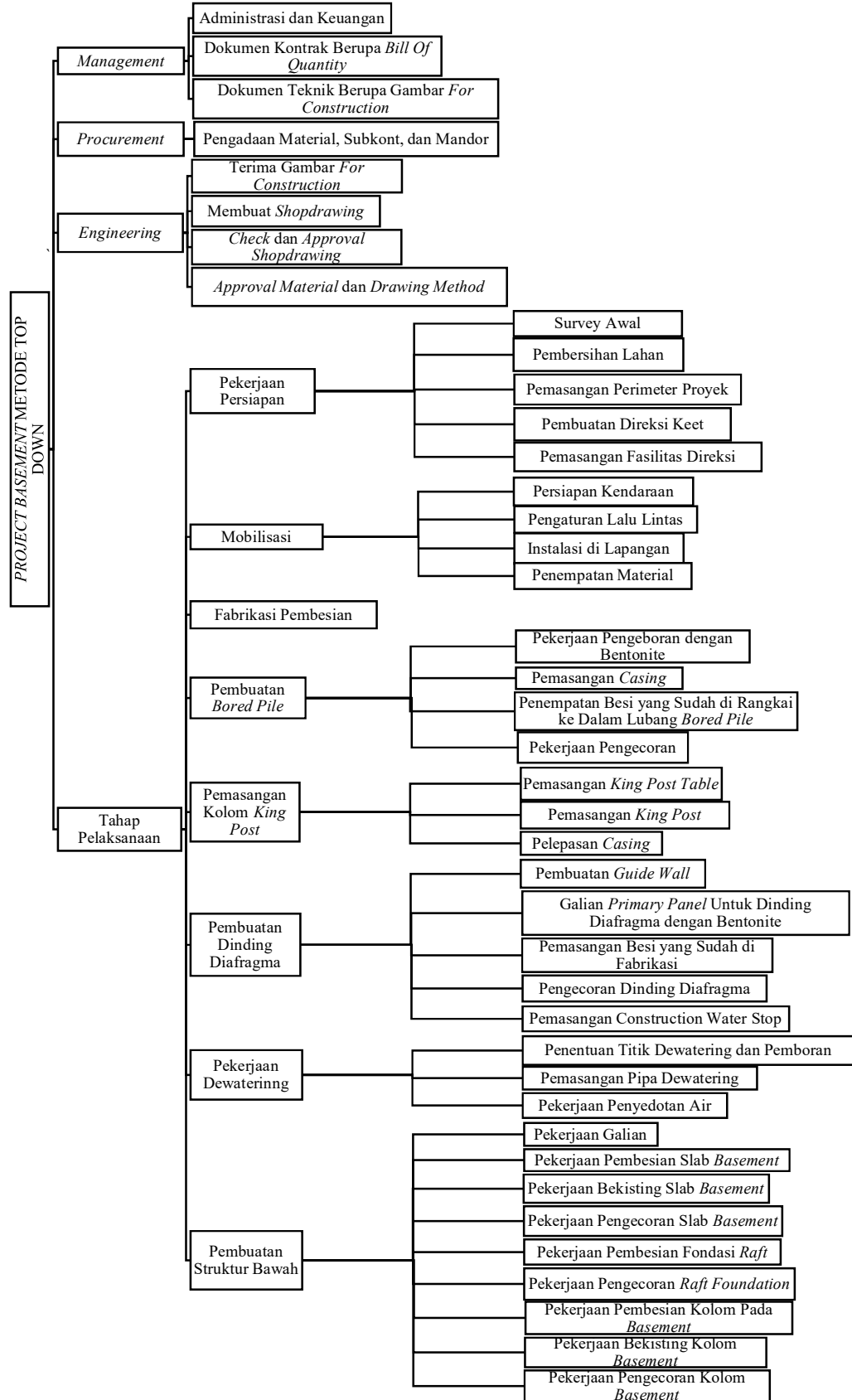
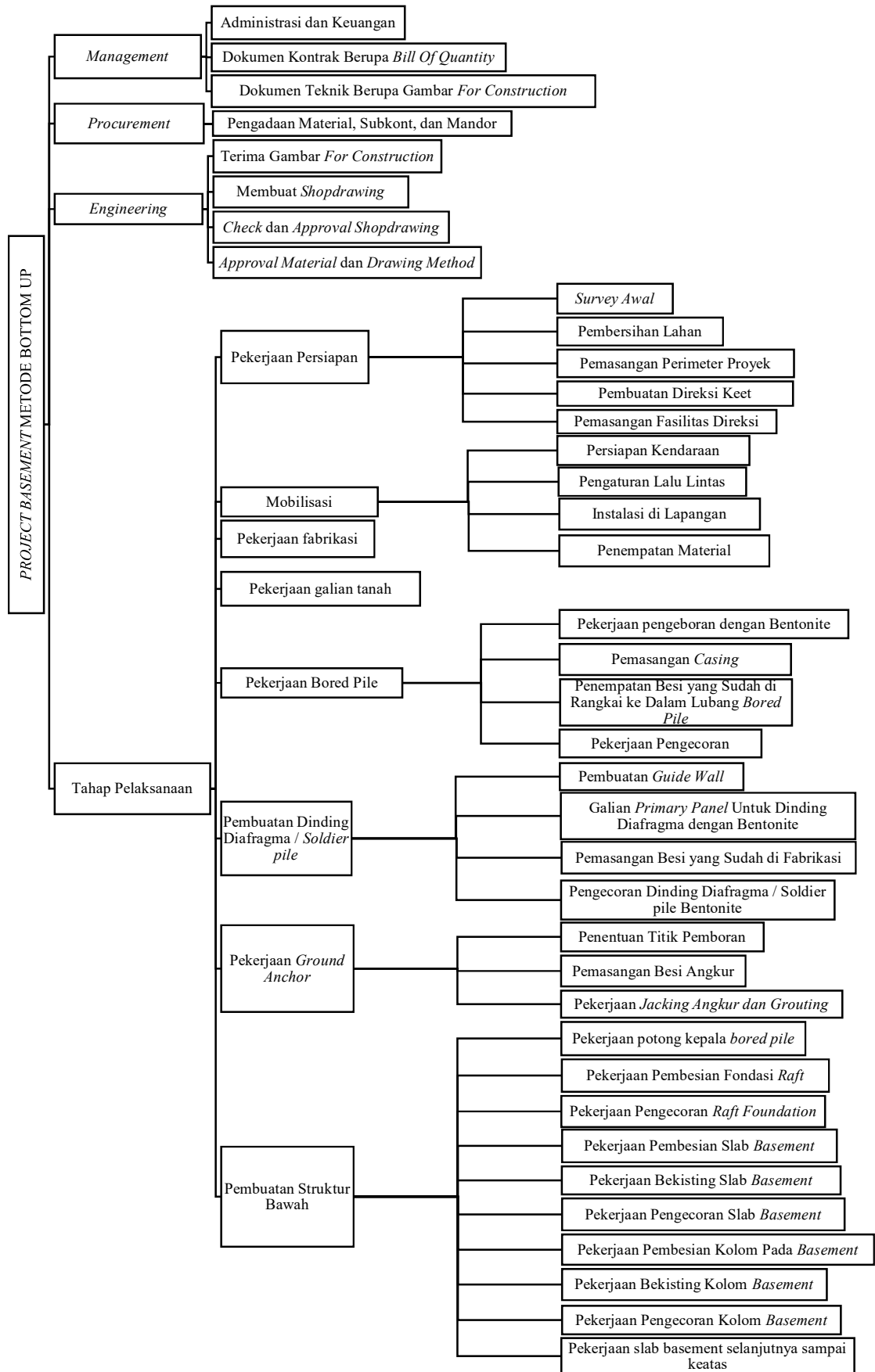


LAMPIRAN

Lampiran 1. *Work Breakdown Structure*





Lampiran 2 Hasil Perhitungan volume *core wall*

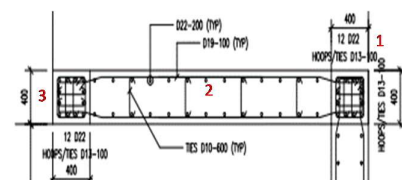
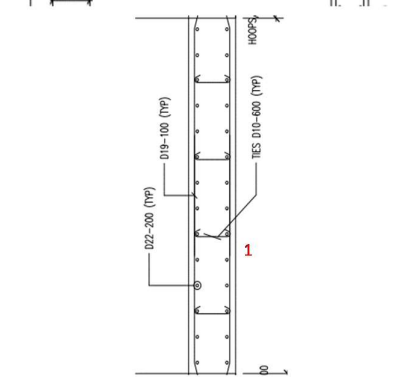
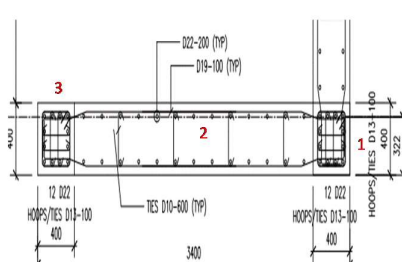
Jenis	Bentuk penampang	Bagian	Perhitungan Volume Beton					Volume tulangan					Total (kg)	Kebutuhan bekisting (m2)									
			Dimensi (m)			Volume beton (m ³)	Tulangan pokok			Lokasi	Tulangan sengkang / spiral												
			b	h	d		H	L	Diameter (m)		Qty	L (m)			jarak (m)	Berat (kg)	Diameter (m)	Qty	L (m)	jarak (m)	Berat (kg)		
Core wall IA		1	1.73	0.5	-	3.5	-	3.01900	0.029	39	3.5	-	707.0700	Hoops	0.013	35	5.562	0.1	202.457	1418.5450	15.575		
			Ties	0.013	805	0.608	0.1	509.018															
		2	1.73	0.5	-	3.95	-	3.40700	0.029	39	3.95	-	797.9790	Hoops	0.013	40	5.562	0.1	231.38	1611.0940	17.5775		
			Ties	0.013	920	0.608	0.1	581.735															
		3	0.8	0.5	-	3.5	-	1.40000	0.029	25	3.5	-	453.2500	Hoops	0.013	35	2.712	0.1	98.717	729.0170	9.1		
			Ties	0.013	280	0.608	0.1	177.05															
		4	0.8	0.5	-	3.95	-	1.58000	0.029	25	3.95	-	511.5250	Hoops	0.013	40	2.712	0.1	112.82	826.6880	10.27		
			Ties	0.013	320	0.608	0.1	202.343															
		Core wall IB		1	1.6	0.5	-	3.5	-	2.80000	0.029	32	3.5	-	580.1600	Hoops	0.019	35	6.4	0.1	499.52	1108.6173	14.7
					Ties	0.010	70	0.67	0.6	28.9373													
2	1.6			0.5	-	3.95	-	3.16000	0.029	32	3.95	-	654.7520	Hoops	0.019	40	6.4	0.1	570.88	1258.7032	16.59		
	Ties			0.010	80	0.67	0.6	33.0712															
3	0.8	0.5	-	3.5	-	1.40000	0.029	22	3.5	-	398.8600	Hoops	0.013	35	2.712	0.1	98.717	674.6270	9.1				
	Ties	0.013	280	0.608	0.1	177.05																	
4	0.8	0.5	-	3.95	-	1.58000	0.029	22	3.95	-	450.1420	Hoops	0.013	40	2.712	0.1	112.82	765.3050	10.27				
	Ties	0.013	320	0.608	0.1	202.343																	
Core wall IC		1	4.75	0.5	-	3.5	-	8.31300	0.029	96	3.5	0.1	1740.4800	Hoops	0.019	35	19.656	0.1	1534.151	3437.7030	36.75		
			Ties	0.010	280	0.56	0.6	163.072															
		2	4.75	0.5	-	3.95	-	9.38200	0.029	96	3.95	0.1	1964.2560	Hoops	0.019	40	19.656	0.1	1753.316	3903.9400	41.475		
			Ties	0.010	320	0.56	0.6	186.368															
		3	1.73	0.5	-	3.5	-	3.01900	0.029	39	3.5	-	707.0700	Hoops	0.013	35	5.562	0.1	202.457	1418.5450	15.575		
			Ties	0.013	805	0.608	0.1	509.018															
		4	1.73	0.5	-	3.95	-	3.40700	0.029	39	3.95	-	797.9790	Hoops	0.013	40	5.562	0.1	231.38	1592.1240	17.5775		
			Ties	0.013	890	0.608	0.1	562.765															
		1	0.8	0.5	-	3.5	-	1.40000	0.029	25	3.5	-	453.2500	Hoops	0.013	35	2.712	0.1	98.717	729.0170	9.1		
			Ties	0.013	280	0.608	0.1	177.05															
		2	0.8	0.5	-	3.95	-	1.58000	0.029	25	3.95	-	511.5250	Hoops	0.013	40	2.712	0.1	112.82	826.6880	10.27		
			Ties	0.013	320	0.608	0.1	202.343															
		3	1.8	0.5	-	3.5	-	3.15000	0.029	32	3.5	-	580.1600	Hoops	0.019	35	6.4	0.1	499.52	1123.0860	16.1		
			Ties	0.010	105	0.67	0.6	43.40595															
		4	1.8	0.5	-	3.95	-	3.55500	0.029	32	3.95	-	654.7520	Hoops	0.019	40	6.4	0.1	570.88	1275.2388	18.17		
			Ties	0.010	120	0.67	0.6	49.6068															
1	0.8	0.5	-	3.5	-	1.40000	0.029	22	3.5	-	398.8600	Hoops	0.013	35	2.712	0.1	98.717	674.6270	9.1				
	Ties	0.013	280	0.608	0.1	177.05																	
2	0.8	0.5	-	3.95	-	1.58000	0.029	22	3.95	-	450.1420	Hoops	0.013	40	2.712	0.1	112.82	765.3050	10.27				
	Ties	0.013	320	0.608	0.1	202.343																	
Kebutuhan beton total			CW1 (3.5)		25.90100	M3				CW (3.5)			11313.7843	135.1									
			CW1 (3.95)		29.231	M3				CW (3.95)			12825.0860	152.47									

Jenis	Bentuk penampang	Bagian	Perhitungan Volume Beton					Volume tulangan										Kebutuhan bekisting (m ²)			
			Dimensi (m)					Volume beton (m ³)	Tulangan pokok				Lokasi	Tulangan sengkang / spiral					Total (kg)		
			b	h	d	H	L		Diameter (m)	Qty	L (m)	jarak (m)		Berat (kg)	Diameter (m)	Qty	L (m)			jarak (m)	Berat (kg)
Core wall 2A		1	1	0.5	-	3.5	-	1.75000	0.025	22	3.5	-	296.4500	Hoops	0.013	35	4.112	0.1	149.677	778.0950	10.5
			Ties	0.013	525	0.608	0.1	331.968													
		1	1	0.5	-	3.95	-	1.97500	0.025	22	3.95	-	334.5650	Hoops	0.013	40	4.112	0.1	171.06	885.0170	11.85
			Ties	0.013	600	0.608	0.1	379.392													
		2	1	0.5	-	3.5	-	1.75000	0.025	29	3.5	-	390.7750	Hoops	0.013	35	3.112	0.1	113.277	725.3640	10.5
			Ties	0.013	350	0.608	0.1	221.312													
		1	1	0.5	-	3.95	-	1.97500	0.025	29	3.95	-	441.0175	Hoops	0.013	40	3.112	0.1	129.46	823.4055	11.85
			Ties	0.013	400	0.608	0.1	252.928													
		3	0.9	0.5	-	3.5	-	1.57500	0.025	12	3.5	-	161.7000	Hoops	0.032	18	5.8	0.2	658.764	835.3460	9.8
			Ties	0.010	36	0.67	0.6	14.88204													
		0.9	0.9	0.5	-	3.95	-	1.77800	0.025	12	3.95	-	182.4900	Hoops	0.032	20	5.8	0.2	731.96	930.9856	11.06
			Ties	0.010	40	0.67	0.6	16.5356													
4	0.8	0.5	-	3.5	-	1.40000	0.025	26	3.5	-	350.3500	Hoops	0.013	35	2.712	0.1	98.717	626.1170	9.1		
	Ties	0.013	280	0.608	0.1	177.05															
0.8	0.8	0.5	-	3.95	-	1.58000	0.025	26	3.95	-	395.3950	Hoops	0.013	40	2.712	0.1	112.82	710.5580	10.27		
	Ties	0.013	320	0.608	0.1	202.343															
Core wall 2B		1	6.2	0.5	-	3.5	-	10.85000	0.025	62	3.5	0.2	835.4500	Hoops	0.025	35	19.8	0.1	2668.05	3727.7240	46.9
			Ties	0.010	385	0.56	0.6	224.224													
6.2	6.2	0.5	-	3.95	-	12.24500	0.025	62	3.95	0.2	942.8650	Hoops	0.025	40	19.8	0.1	3049.2	4248.3210	52.93		
	Ties	0.010	440	0.56	0.6	256.256															
Core wall 2C		1	1	0.5	-	3.5	-	1.75000	0.025	22	3.5	-	296.4500	Hoops	0.013	35	4.112	0.1	149.677	778.0950	10.5
			Ties	0.013	525	0.608	0.1	331.968													
		1	1	0.5	-	3.95	-	1.97500	0.025	22	3.95	-	334.5650	Hoops	0.013	40	4.112	0.1	171.06	885.0170	11.85
			Ties	0.013	600	0.608	0.1	379.392													
		2	1	0.5	-	3.5	-	1.75000	0.025	29	3.5	-	390.7750	Hoops	0.013	35	3.112	0.1	113.277	725.3640	10.5
			Ties	0.013	350	0.608	0.1	221.312													
		1	1	0.5	-	3.95	-	1.97500	0.025	29	3.95	-	441.0175	Hoops	0.013	40	3.112	0.1	129.46	823.4055	11.85
			Ties	0.013	400	0.608	0.1	252.928													
		3	1.5	0.5	-	3.5	-	2.62500	0.025	12	3.5	-	161.7000	Hoops	0.032	18	7	0.2	795.06	979.0831	14
			Ties	0.010	54	0.67	0.6	22.32306													
		1.5	1.5	0.5	-	3.95	-	2.96300	0.025	12	3.95	-	182.4900	Hoops	0.032	20	7.0	0.2	883.4	1090.6934	15.8
			Ties	0.010	60	0.67	0.6	24.8034													
		4	0.8	0.5	-	3.5	-	1.40000	0.025	26	3.5	-	350.3500	Hoops	0.013	35	2.712	0.1	98.717	626.1170	9.1
			Ties	0.013	280	0.608	0.1	177.05													
0.8	0.8	0.5	-	3.95	-	1.58000	0.025	26	3.95	-	395.3950	Hoops	0.013	40	2.712	0.1	112.82	710.5580	10.27		
	Ties	0.013	320	0.608	0.1	202.343															
Kebutuhan beton total			CW2 (3.5)		24.85000	M3											9801.3051	130.9			
			CW2 (3.95)		28.046	M3											11107.9610	147.73			

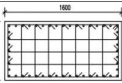
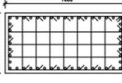

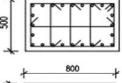
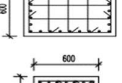
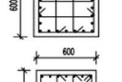
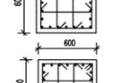
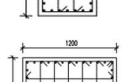
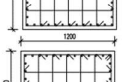

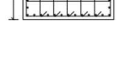
Jenis	Bentuk penampang	Bagian	Perhitungan Volume Beton					Volume tulangan										Total (kg)	Kebutuhan bekisting (m ²)				
			Dimensi (m)					Tulangan pokok					Tulangan sengkang / spiral										
			b	h	d	H	L	Volume beton (m ³)	Diameter (m)	Qty	L (m)	jarak (m)	Beat (kg)	Lokasi	Diameter (m)	Qty	L (m)			jarak (m)	Beat (kg)		
Core wall 3A		1	1.3	0.5	-	3.5	-	2.27500	0.025	24	3.5	-	323.4000	Hoops	0.013	35	3.712	0.1	135.117	746.2230	12.6		
			Ties	0.013	455	0.608	0.1	287.706															
		2	1.3	0.5	-	3.95	-	2.56800	0.025	24	3.95	-	364.9800	Hoops	0.013	40	3.712	0.1	154.42	848.2070	14.22		
			Ties	0.013	520	0.608	0.1	328.807															
		3	1.73	0.5	-	3.5	-	3.01900	0.025	42	3.5	-	565.9500	Hoops	0.013	35	4.562	0.1	166.057	1130.3690	15.575		
			Ties	0.013	630	0.608	0.1	398.362															
		4	1.73	0.5	-	3.95	-	3.40700	0.025	42	3.95	-	638.7150	Hoops	0.013	40	4.562	0.1	189.78	1283.7660	17.5775		
			Ties	0.013	720	0.608	0.1	455.271															
		Core wall 3B		1	6.6	0.5	-	3.5	-	11.55000	0.025	66	3.5	0.2	889.3500	Hoops	0.029	35	18.896	0.1	3425.845	4539.4190	49.7
					Ties	0.010	385	0.56	0.6	224.224													
				2	6.6	0.5	-	3.95	-	13.03500	0.025	66	3.95	0.2	1003.6950	Hoops	0.029	40	18.896	0.1	3915.252	5175.2030	56.09
					Ties	0.010	440	0.56	0.6	256.256													
Core wall 3C		1	1.3	0.5	-	3.5	-	2.27500	0.025	24	3.5	-	323.4000	Hoops	0.013	35	3.712	0.1	135.117	746.2230	12.6		
			Ties	0.013	455	0.608	0.1	287.706															
		2	1.3	0.5	-	3.95	-	2.56800	0.025	24	3.95	-	364.9800	Hoops	0.013	40	3.712	0.1	154.42	848.2070	14.22		
			Ties	0.013	520	0.608	0.1	328.807															
		3	1	0.5	-	3.5	-	1.75000	0.025	23	3.5	-	309.9250	Hoops	0.013	35	3.112	0.1	113.277	644.5140	10.5		
			Ties	0.013	350	0.608	0.1	221.312															
		4	1	0.5	-	3.95	-	1.97500	0.025	23	3.95	-	349.7725	Hoops	0.013	40	3.112	0.1	129.46	732.1605	11.85		
			Ties	0.013	400	0.608	0.1	252.928															
		3	1.3	0.5	-	3.5	-	2.27500	0.025	12	3.5	-	161.7000	Hoops	0.029	18	6.6	0.2	615.384	791.9660	12.6		
			Ties	0.010	36	0.67	0.6	14.88204															
		4	1.3	0.5	-	3.95	-	2.56800	0.025	12	3.95	-	182.4900	Hoops	0.029	20	6.6	0.2	683.76	882.7856	14.22		
			Ties	0.010	40	0.67	0.6	16.5356															
1	1	0.5	-	3.5	-	1.75000	0.025	26	3.5	-	350.3500	Hoops	0.013	35	3.112	0.1	113.277	684.9390	10.5				
	Ties	0.013	350	0.608	0.1	221.312																	
2	1	0.5	-	3.95	-	1.97500	0.025	26	3.95	-	395.3950	Hoops	0.013	40	3.112	0.1	129.46	777.7830	11.85				
	Ties	0.013	400	0.608	0.1	252.928																	
Kebutuhan beton total			CW3 (3.5)		29.97000	M3						CW3 (3.5)		11412.6491	151.375								
			CW3 (3.95)		33.824	M3						CW3 (3.95)		12943.5812	170.8375								

Jenis	Bentuk penampang	Bagian	Perhitungan Volume Beton					Volume tulangan										Total (kg)	Kebutuhan bekisting (m ²)		
			Dimensi (m)					Tulangan pokok					Lokasi								
			b	h	d	H	L	Volume beton (m ³)	Diameter (m)		Qty	L (m)	jarak (m)	Berat (kg)	Tulangan sengkang / spiral		Berat (kg)				
Core wall 4A		1	1.5	0.5	-	3.5	-	2.62500	0.029	33	3.5	-	598.2900	Hoops	0.013	35	5.112	0.1	186.077	1226.9910	14
			Ties	0.013	700	0.608	0.1	442.624													
		1	1.5	0.5	-	3.95	-	2.96300	0.029	33	3.95	-	675.2130	Hoops	0.013	40	5.112	0.1	212.66	1393.7290	15.8
			Ties	0.013	800	0.608	0.1	505.856													
		2	0.7	0.5	-	3.5	-	1.22500	0.029	23	3.5	-	416.9900	Hoops	0.013	35	2.512	0.1	91.437	663.3460	8.4
			Ties	0.013	245	0.608	0.1	154.919													
		2	0.7	0.5	-	3.95	-	1.38300	0.029	23	3.95	-	470.6030	Hoops	0.013	40	2.512	0.1	104.5	752.1530	9.48
			Ties	0.013	280	0.608	0.1	177.05													
		3	1.28	0.5	-	3.5	-	2.23200	0.029	14	3.5	-	253.8200	Hoops	0.025	18	5.35	0.2	370.755	646.8981	12.425
			Ties	0.010	54	0.67	0.6	22.32306													
		3	1.28	0.5	-	3.95	-	2.51900	0.029	14	3.95	-	286.4540	Hoops	0.025	20	5.35	0.2	411.95	723.2074	14.0225
			Ties	0.010	60	0.67	0.6	24.8034													
4	0.7	0.5	-	3.5	-	1.22500	0.029	20	3.5	-	362.6000	Hoops	0.013	35	2.512	0.1	91.437	608.9560	8.4		
	Ties	0.013	245	0.608	0.1	154.919															
4	0.7	0.5	-	3.95	-	1.38300	0.029	20	3.95	-	409.2200	Hoops	0.013	40	2.512	0.1	104.5	690.7700	9.48		
	Ties	0.013	280	0.608	0.1	177.05															
Core wall 4B		1	5.2	0.5	-	3.5	-	9.10000	0.029	52	3.5	0.2	942.7600	Hoops	0.025	35	19.8	0.1	2668.05	3719.6490	39.9
			Ties	0.010	315	0.56	0.6	108.839													
		1	5.2	0.5	-	3.95	-	10.27000	0.029	52	3.95	0.2	1063.9720	Hoops	0.025	40	19.8	0.1	3049.2	4237.5600	45.03
			Ties	0.010	360	0.56	0.6	124.388													
Core wall 4C		1	1.5	0.5	-	3.5	-	2.62500	0.029	33	3.5	-	598.2900	Hoops	0.013	35	4.112	0.1	149.677	1079.9350	14
			Ties	0.013	525	0.608	0.1	331.968													
		1	1.5	0.5	-	3.95	-	2.96300	0.029	33	3.95	-	675.2130	Hoops	0.013	40	4.112	0.1	171.06	1225.6650	15.8
			Ties	0.013	600	0.608	0.1	379.392													
		2	1	0.5	-	3.5	-	1.75000	0.029	29	3.5	-	525.7700	Hoops	0.013	35	3.112	0.1	113.277	860.3590	10.5
			Ties	0.013	350	0.608	0.1	221.312													
		2	1	0.5	-	3.95	-	1.97500	0.029	29	3.95	-	593.3690	Hoops	0.013	40	3.112	0.1	129.46	975.7570	11.85
			Ties	0.013	400	0.608	0.1	252.928													
		3	0.8	0.5	-	3.5	-	1.40000	0.029	20	3.5	-	362.6000	Hoops	0.025	35	6.6	0.1	889.35	1541.3230	9.1
			Ties	0.010	700	0.67	0.1	289.373													
		3	0.8	0.5	-	3.95	-	1.58000	0.029	20	3.95	-	409.2200	Hoops	0.025	40	6.6	0.1	1016.4	1756.3320	10.27
			Ties	0.010	800	0.67	0.1	330.712													
4	1	0.5	-	3.5	-	1.75000	0.029	26	3.5	-	350.3500	Hoops	0.013	35	3.112	0.1	113.277	684.9390	10.5		
	Ties	0.013	350	0.608	0.1	221.312															
4	1	0.5	-	3.95	-	1.97500	0.029	26	3.95	-	395.3950	Hoops	0.013	40	3.112	0.1	129.46	777.7830	11.85		
	Ties	0.013	400	0.608	0.1	252.928															
Kebutuhan beton total			CW 4 (3.5)		23.93200	M3						CW 4 (3.5)		11032.3961	127.225						
			CW 4 (3.95)		27.011	M3						CW 4 (3.95)		12532.9564	143.5825						

Jenis	Bentuk penampang	Bagian	Perhitungan Volume Beton					Volume tulangan										Kebutuhan					
			Dimensi (m)					Volume beton (m ³)	Tulangan pokok				Lokasi	Tulangan sengkang / spiral					Total (kg)	bekisting (m ²)			
			b	h	d	H	L		Diameter (m)	Qty	L (m)	jarak (m)		Berat (kg)	Diameter (m)	Qty	L (m)	jarak (m)			Berat (kg)		
Core wall 6A		1	0.84	0.4	-	3.5	-	1.17600	0.022	22	3.5	-	229.4600	Hoops	0.013	35	2.592	0.1	94.349	490.2300	8.68		
			Ties	0.013	315	0.508	0.1	166.421															
		2	0.84	0.4	-	3.95	-	1.32800	0.022	22	3.95	-	258.9620	Hoops	0.013	40	2.592	0.1	107.828	556.9860	9.796		
			Ties	0.013	360	0.508	0.1	190.196															
		3	5.5	0.5	-	3.5	-	9.62500	0.022	54	3.5	-	563.2200	Hoops	0.022	18	14.36	0.2	770.2704	1407.9006	42		
			Ties	0.010	180	0.67	0.6	74.4102															
		4	5.5	0.5	-	3.95	-	10.86300	0.022	54	3.95	-	635.6340	Hoops	0.022	20	14.36	0.2	855.856	1574.1680	47.4		
			Ties	0.010	200	0.67	0.6	82.678															
		Core wall 6B		3	0.84	0.5	-	3.5	-	1.47000	0.022	24	3.5	-	250.3200	Hoops	0.013	35	2.792	0.1	101.629	528.9990	9.38
					Ties	0.013	280	0.608	0.1	177.05													
1	0.84			0.5	-	3.95	-	1.65900	0.022	24	3.95	-	282.5040	Hoops	0.013	40	2.792	0.1	116.148	600.9950	10.586		
	Ties			0.013	320	0.608	0.1	202.343															
1	2.78			0.5	-	3.5	-	4.85700	0.022	28	3.5	-	292.0400	Hoops	0.022	35	8.478	0.1	884.256	1236.7620	22.925		
	Ties			0.010	175	0.56	0.6	60.466															
1	2.78	0.5	-	3.95	-	5.48100	0.022	28	3.95	-	329.5880	Hoops	0.022	40	8.478	0.1	1010.578	1409.2700	25.8725				
	Ties	0.010	200	0.56	0.6	69.104																	
Core wall 6C		1	0.4	0.4	-	3.5	-	0.56000	0.022	12	3.5	-	125.1600	Hoops	0.013	35	1.712	0.1	62.317	261.4420	5.6		
			Ties	0.013	140	0.508	0.1	73.965															
		2	0.4	0.4	-	3.95	-	0.63200	0.022	12	3.95	-	141.2520	Hoops	0.013	40	1.712	0.1	71.22	297.0040	6.32		
			Ties	0.013	160	0.508	0.1	84.532															
		3	0.8	0.5	-	3.5	-	1.40000	0.022	60	3.5	-	625.8000	Hoops	0.022	35	13.56	0.1	1414.308	2184.7945	9.1		
			Ties	0.010	350	0.67	0.1	144.6865															
		4	0.8	0.5	-	3.95	-	1.58000	0.022	60	3.95	-	706.2600	Hoops	0.022	40	13.56	0.1	1616.352	2487.9680	10.27		
			Ties	0.010	400	0.67	0.1	165.356															
		1	0.4	0.4	-	3.5	-	0.56000	0.022	12	3.5	-	125.1600	Hoops	0.013	35	1.712	0.1	62.317	261.4420	5.6		
			Ties	0.013	140	0.508	0.1	73.965															
3	0.4	0.4	-	3.95	-	0.63200	0.022	12	3.95	-	141.2520	Hoops	0.013	40	1.712	0.1	71.22	297.0040	6.32				
	Ties	0.013	160	0.508	0.1	84.532																	
Kebutuhan beton total			CW 6 (3.5)		19.08800	M3						CW 6 (3.5)		6371.5701	103.285								
			CW 6 (3.95)		21.543	M3						CW 6 (3.95)		7223.3950	116.5645								

Jenis	Bentuk penampang	Perhitungan Volume Beton					Volume tulangan										Kebutuhan				
		Bagian	Dimensi (m)				Volume beton (m ³)	Tulangan pokok				Lokasi	Tulangan sengkang / spiral				Total (kg)	bekisting (m ²)			
			b	h	d	H		L	Diameter (m)	Qty	L (m)		jarak (m)	Berat (kg)	Diameter (m)	Qty			L (m)	jarak (m)	Berat (kg)
Core wall 7A		1	0.4	0.4	-	3.5	-	0.56000	0.022	12	3.5	-	125.1600	Hoops	0.013	35	1.712	0.1	62.317	261.4420	5.6
		1	0.4	0.4	-	3.95	-	0.63200	0.022	12	3.95	-	141.2520	Ties	0.013	140	0.508	0.1	73.965		
		2	0.8	0.5	-	3.5	-	1.40000	0.022	26	3.5	-	271.1800	Hoops	0.013	40	1.712	0.1	71.22	1038.2946	9.1
		2	0.8	0.5	-	3.95	-	1.58000	0.022	26	3.95	-	306.0460	Ties	0.013	160	0.508	0.1	84.532		
		3	0.4	0.4	-	3.5	-	0.56000	0.022	12	3.5	-	125.1600	Hoops	0.013	35	1.712	0.1	62.317	261.4420	5.6
		3	0.4	0.4	-	3.95	-	0.63200	0.022	12	3.95	-	141.2520	Ties	0.013	140	0.508	0.1	73.965		
Core wall 7B		1	2.78	0.4	-	3.5	-	3.88500	0.022	28	3.5	-	292.0400	Hoops	0.013	40	1.712	0.1	71.22	1373.0900	25.0825
		1	2.78	0.4	-	3.95	-	4.38500	0.022	28	3.95	-	329.5880	Ties	0.013	160	0.508	0.1	84.532		
		2	0.4	0.4	-	3.5	-	0.56000	0.022	12	3.5	-	125.1600	Hoops	0.013	35	1.712	0.1	62.317	261.4420	5.6
		2	0.4	0.4	-	3.95	-	0.63200	0.022	12	3.95	-	141.2520	Ties	0.013	140	0.508	0.1	73.965		
Core wall 7C		1	0.4	0.4	-	3.5	-	0.56000	0.022	12	3.5	-	125.1600	Hoops	0.013	35	1.712	0.1	62.317	261.4420	5.6
		1	0.4	0.4	-	3.95	-	0.63200	0.022	12	3.95	-	141.2520	Ties	0.013	140	0.508	0.1	73.965		
		2	0.8	0.5	-	3.5	-	1.40000	0.022	26	3.5	-	271.1800	Hoops	0.013	40	1.712	0.1	71.22	1038.2946	9.1
		2	0.8	0.5	-	3.95	-	1.58000	0.022	26	3.95	-	306.0460	Ties	0.013	160	0.508	0.1	84.532		
		3	0.4	0.4	-	3.5	-	0.56000	0.022	12	3.5	-	125.1600	Hoops	0.013	35	1.712	0.1	62.317	261.4420	5.6
		3	0.4	0.4	-	3.95	-	0.63200	0.022	12	3.95	-	141.2520	Ties	0.013	140	0.508	0.1	73.965		
		Kebutuhan beton total		CW 7 (3.5)	6.40500	M3							CW 7 (3.5)	3027.7256	62.825						
				CW 7 (3.95)	7.789	M3							CW 7 (3.95)	3446.8504	70.9025						

Lampiran 3 Hasil perhitungan volume kolom

Jenis	Bentuk penampang	Perhitungan Volume Beton					Volume tulangan																	Total (kg)	Kebutuhan bekisting (m ²)				
		Dimensi (m)					Qty	Volume beton (m ³)	Volume total (m ³)	Tulangan pokok				Tulangan sengkang / spiral (Tumpuan)				Tulangan sengkang / spiral (Lapangan)											
		b	h	d	H	L				Diameter (m)	Qty	L (m)	jarak (m)	Berat (kg)	Diameter (m)	Qty	L (m)	jarak (m)	Berat (kg)	Diameter (m)	Qty	L (m)	jarak (m)			Berat (kg)			
K1		Basement 2 - 4	1.6	0.8	-	3.5	-	4.48	1	4.4800	9.5360	0.025	48	3.5	-	643.4	Stirrup	0.01	11	4.99	0.175	33.867	0.01	6	4.99	0.35	18.473	801.2995	16.8
		Basement 1	1.6	0.8	-	3.95	-	5.056	1	5.0560		0.025	48	3.95	-	726.2	Ties	0.01	11	10.06	0.175	68.277	0.01	6	10.06	0.35	37.242		
K1A		Basement 2 - 4	1.6	0.8	-	3.5	-	4.48	1	4.48	9.536	0.029	48	3.5	-	870.2400	Stirrup	0.01	9	4.99	0.23	27.709	0.01	6	4.99	0.375	18.473	1009.5278	16.8
		Basement 1	1.6	0.8	-	3.95	-	5.056	1	5.056		0.029	48	3.95	-	982.1280	Ties	0.01	9	10.06	0.23	55.863	0.01	6	10.06	0.375	37.242		
K1B		Basement 2 - 4	1.6	0.8	-	3.5	-	4.48	1	4.48	9.536	0.036	48	3.5	-	1342.3200	Stirrup	0.01	9	4.99	0.24	27.709	0.01	6	4.99	0.37	18.473	1481.6078	16.8
		Basement 1	1.6	0.8	-	3.95	-	5.056	1	5.056		0.036	48	3.95	-	1514.9040	Ties	0.01	9	10.06	0.24	55.863	0.01	6	10.06	0.37	37.242		
K2		Basement 2 - 4	0.8	0.5	-	3.5	-	1.40	1	1.40	2.980	0.022	24	3.5	-	250.3200	Stirrup	0.01	11	2.79	0.175	18.936	0.01	9	2.79	0.225	15.493	314.8582	9.1
		Basement 1	0.8	0.5	-	3.95	-	1.58	1	1.58		0.022	24	3.95	-	282.5040	Ties	0.01	11	2.44	0.175	16.560	0.01	9	2.44	0.225	13.549		
K3		Basement 2 - 4	0.8	0.6	-	3.5	-	1.68	1	1.68	3.576	0.019	28	3.5	-	218.5400	Stirrup	0.01	13	2.99	0.15	23.983	0.01	8	2.99	0.275	14.759	302.1127	9.8
		Basement 1	0.8	0.6	-	3.95	-	1.896	1	1.896		0.019	28	3.95	-	246.6380	Ties	0.01	13	3.46	0.15	27.753	0.01	8	3.46	0.275	17.079		
K4		Basement 2 - 4	0.6	0.6	-	3.5	-	1.26	1	1.26	2.682	0.019	24	3.5	-	187.3200	Stirrup	0.01	13	2.59	0.15	20.774	0.01	8	2.59	0.275	12.784	253.7894	8.4
		Basement 1	0.6	0.6	-	3.95	-	1.422	1	1.422		0.019	24	3.95	-	211.4040	Ties	0.01	13	2.54	0.15	20.373	0.01	8	2.54	0.275	12.537		
K4B		Basement 2 - 4	0.6	0.6	-	3.5	-	1.26	1	1.26	2.682	0.016	24	3.5	-	132.7200	Stirrup	0.01	15	2.59	0.13	23.970	0.01	8	2.59	0.255	12.784	205.5198	8.4
		Basement 1	0.6	0.6	-	3.95	-	1.422	1	1.422		0.016	24	3.95	-	149.7840	Ties	0.01	15	2.54	0.13	23.508	0.01	8	2.54	0.255	12.537		
K4C		Basement 2 - 4	0.6	0.6	-	3.5	-	1.26	1	1.26	1.260	0.019	24	3.5	-	187.3200	Stirrup	0.01	15	2.59	0.15	20.774	0.01	8	2.59	0.275	12.784	253.7894	8.4
		Basement 1	0.6	0.6	-	3.95	-	1.422	1	1.422		0.019	24	3.95	-	211.4040	Ties	0.01	15	2.54	0.15	20.373	0.01	8	2.54	0.275	12.537		
K5		Basement 2 - 4	1.2	0.9	-	3.5	-	3.78	1	3.78	8.046	0.019	40	3.5	-	221.2000	Stirrup	0.01	15	4.39	0.13	40.629	0.01	8	4.39	0.255	21.669	395.8912	14.7
		Basement 1	1.2	0.9	-	3.95	-	4.266	1	4.266		0.019	40	3.95	-	249.6400	Ties	0.01	15	7.92	0.13	73.300	0.01	8	7.92	0.255	39.093		
K5A		Basement 2 - 4	1.2	0.9	-	3.5	-	3.78	1	3.78	8.046	0.019	40	3.5	-	221.2000	Stirrup	0.01	17	4.39	0.13	46.047	0.01	9	4.39	0.255	24.378	447.1170	16.59
		Basement 1	1.2	0.9	-	3.95	-	4.266	1	4.266		0.019	40	3.95	-	249.6400	Ties	0.01	17	7.92	0.13	83.073	0.01	9	7.92	0.255	43.980		
K5B		Basement 2 - 4	1.2	0.9	-	3.5	-	3.78	1	3.78	8.046	0.019	40	3.5	-	221.2000	Stirrup	0.01	15	4.39	0.13	40.629	0.01	8	4.39	0.255	21.669	395.8912	14.7
		Basement 1	1.2	0.9	-	3.95	-	4.266	1	4.266		0.019	40	3.95	-	249.6400	Ties	0.01	15	7.92	0.13	73.300	0.01	8	7.92	0.255	39.093		

K6		Basement 2 - 4	0.3	0.3	-	3.5	-	0.32	1	0.32		0.008	22	3.5	-	30.4150	Stirrup	0.01	13	1.39	0.15	11.149	0.01	7	1.39	0.305	6.003	47.5676	4.2
		Basement 1	0.3	0.3	-	3.95	-	0.3555	1	0.3555	0.671	0.008	22	3.95	-	34.3255	Stirrup	0.01	15	1.39	0.15	12.864	0.01	8	1.39	0.305	6.861	54.0510	4.74
K9		Basement 2 - 4	0.7	0.7	-	3.5	-	1.72	1	1.72		0.022	24	3.5	-	250.3200	Stirrup	0.01	13	2.99	0.15	23.983	0.01	12	2.99	0.16	22.138	341.7903	9.8
		Basement 1	0.7	0.7	-	3.95	-	1.9355	1	1.9355	3.651	0.022	24	3.95	-	282.5040	Ties	0.01	13	2.94	0.15	23.582	0.01	12	2.94	0.16	21.768		
K10		Basement 2 - 4	0.8	0.4	-	3.5	-	1.12	1	1.12		0.016	24	3.5	-	132.7200	Stirrup	0.01	15	2.59	0.13	23.970	0.01	11	2.59	0.175	17.578	221.4323	8.4
		Basement 1	0.8	0.4	-	3.95	-	1.120	1	1.120	1.120	0.016	24	3.95	-	132.7200	Ties	0.01	15	2.94	0.13	27.210	0.01	11	2.94	0.175	19.954		
K12		Basement 2 - 4	0.7	0.7	-	3.5	-	1.72	1	1.72		0.019	24	3.5	-	187.3200	Stirrup	0.01	13	2.99	0.15	23.983	0.01	7	2.99	0.305	12.914	260.4962	9.8
		Basement 1	0.7	0.7	-	3.95	-	1.715	1	1.715	1.715	0.019	24	3.95	-	187.3200	Ties	0.01	13	2.94	0.15	23.582	0.01	7	2.94	0.305	12.698		
K13		Basement 2 - 4	0.8	0.8	-	3.5	-	2.24	1	2.24		0.016	32	3.5	-	176.9600	Stirrup	0.01	15	3.39	0.13	31.374	0.01	8	3.39	0.255	16.733	292.9005	11.2
		Basement 1	0.8	0.8	-	3.95	-	2.528	1	2.528	4.768	0.016	32	3.95	-	376.6720	Ties	0.01	15	4.78	0.13	44.239	0.01	8	4.78	0.255	23.594		
K14		Basement 2 - 4	0.6	0.4	-	3.5	-	0.84	1	0.84		0.016	20	3.5	-	110.6000	Stirrup	0.01	13	2.19	0.15	17.566	0.01	13	2.19	0.155	17.566	171.7200	7
		Basement 1	0.6	0.4	-	3.95	-	0.840	1	0.840	0.840	0.016	20	3.95	-	110.6000	Ties	0.01	13	1.62	0.15	12.994	0.01	13	1.62	0.155	12.994		
K15		Basement 2 - 4	0.8	0.7	-	3.5	-	1.96	1	1.96		0.016	28	3.5	-	154.8400	Stirrup	0.013	33	3.298	0.055	113.187	0.01	17	3.298	0.115	34.593	473.2528	10.5
		Basement 1	0.8	0.7	-	4.95	-	2.772	1	2.772	4.732	0.016	28	4.95	-	218.9880	Ties	0.013	33	3.808	0.055	130.691	0.01	17	3.808	0.115	39.942		
K16		Basement 2 - 4	0.8	0.8	-	3.5	-	2.24	1	2.24		0.019	32	3.5	-	249.7600	Stirrup	0.01	15	3.39	0.13	31.374	0.01	8	3.39	0.255	16.733	365.7005	11.2
		Basement 1	0.8	0.8	-	3.95	-	2.240	1	2.240	2.240	0.019	32	3.95	-	249.7600	Ties	0.01	15	4.78	0.13	44.239	0.01	8	4.78	0.255	23.594		
KT1		Basement 1	0.4	0.4	-	3.95	-	0.63	1	0.63		0.016	16	3.95	-	99.8560	Stirrup	0.01	17	1.79	0.13	18.775	0.01	13	1.79	0.175	14.358	153.3499	6.32
		Basement 1	0.4	0.4	-	3.95	-	0.632	1	0.632	0.632	0.016	16	3.95	-	99.8560	Ties	0.01	17	1.1	0.13	11.538	0.01	13	1.1	0.175	8.823		
KT2		Basement 1	0.8	0.7	-	3.95	-	2.21	1	2.21		0.029	28	3.95	-	174.7480	Stirrup	0.013	37	3.298	0.055	126.907	0.01	21	3.298	0.1	42.732	503.2247	11.85
		Basement 1	0.8	0.7	-	3.95	-	2.212	1	2.212	2.212	0.029	28	3.95	-	174.7480	Ties	0.013	37	3.088	0.055	118.826	0.01	21	3.088	0.1	40.011		

Lampiran 4 *Bill of Quantity*

BILL NO. 2: BASEMENT			
SUB BILL NO. 2.1: SUB STRUCTURE			
Code	Description	Quantity	Unit
EXCAVATION WORKS			
	Excavate within earth retaining wall from existing level to underside of basement slab formation level		
	Note: The quantities given are the net volume, allowance for additional excavation and backfilling to provide working space shall be included in the unit rates		
A	Excavation for basement, 1st stage	9.441	m3
B	Excavation for basement, 2nd stage	27.980	m3
C	Excavation for basement, 3rd stage	16.985	m3
D	Excavation for raft foundation, semi top-down method	1.920	m3
Backfilling			
E	Backfilling with excavated material	3.894	m3
Soil disposal			
F	Remove surplus excavated material off site	56.326	m3
Temporary dewatering			
G	Allow for providing a temporary dewatering system during the excavation process including retribution to the government	1	Ls
Anti termite			
H	Apply anti termite to excavated surface area as specified (if needed)	4.414	m2
Monitoring and record results from Inclinator			
I	Allow for monitoring and report for inclinometer including cabling (installed by Piling Contractor)	4	no

BILL NO. 2: BASEMENT			
SUB BILL NO. 2.1: SUB STRUCTURE			
Code	Description	Quantity	Unit
EXCAVATION WORK (CONT'D)			
	Cut off pile		
	Cutting off heads of bored piles including excavation disposal of debris and cleaning, straightening and bending of projecting reinforcement for casting into raft foundation		
A	Bored piles, 1200mm diameter	49	no
B	Bored piles, 800mm diameter	140	no
	Cutting off tops of diaphragma walls including excavation disposal of debris and cleaning, straightening and bending of projecting reinforcement for casting into capping beam		
C	Diaphragma walls, 800mm wide	252	m
	Lean concrete FC 15 Mpa		
G	Blinding layer, 50mm thick under basement slab, raft foundation, pile caps, ground water tank, lift pit and sumpit	4.196	m2
	Compacted sand		
H	Compacted sand layer, 100mm thick under basement slab, raft foundation, ground water tank, pile caps, lift pit and sumpit	4.196	m2
	Waterstop as specified		
I	To basement walls	249	m
J	To STP and water tanks wall (Provisional Quantity)	176	m
	Prepare and apply integral waterproofing as specified		
K	To raft foundation, basement slab, tie beams, GWT, STP and perimeter basement walls (provisional)	3.945	m3

BILL NO. 2: BASEMENT			
SUB BILL NO. 2.1: SUB STRUCTURE			
Code	Description	Quantity	Unit
SUB STRUCTURE			
Note: All Provisional Quantity for raft foundation and capping beam			
Vibrated reinforced concrete FC 40W Mpa			
A	Raft foundation	3.681	m3
Vibrated reinforced concrete FC 30 Mpa			
B	Lift pit (at raft foundation)	0	m3
C	Capping beams	245	m3
Vibrated reinforced concrete FC 40 Mpa			
D	Ground slab (B4)	2.564	m3
Bar reinforcement; high tensile steel U40 deformed (if D ≥ 10mm), U24 plain (if D < 10mm), including bending, cutting to length and supplying and installing all tying wire, accessories and consumables			
E	General reinforcing bars in raft foundation, 32mm diameter	1.980.600	kg
F	Ditto, 22mm diameter	45.920	kg
G	Ditto, 16mm diameter	113.570	kg
H	Allow for chairs (kaki ayam)	1	Ls
I	Reinforcing bars in capping beams (ratio 250kg/m3)	61.250	kg
Formwork			
J	To sides of raft foundation and slab B4	659	m2
K	To sides of capping beams	490	m2

BILL NO. 2: BASEMENT			
SUB BILL NO. 2.2: STRUCTURAL FRAME			
Code	Description	Quantity	Unit
BASEMENT STRUCTURE			
Note: All Provisional Quantity for core walls and ramps			
Vibrated reinforced concrete FC 50 Mpa			
A	Columns	523	m3
B	Core walls	1.100	m3
Vibrated reinforced concrete FC 40 Mpa			
C	Suspended slabs	2.276	m3
D	Suspended beams	672	m3
E	Ramps	60	m3
Vibrated reinforced concrete FC 40W Mpa			
F	Basement walls	264	m3
G	Suspended slabs	301	m3
Vibrated reinforced concrete FC 30/30W Mpa			
H	Suspended slabs	0	m3
Bar reinforcement; high tensile steel U40 deformed (if D ≥ 10mm), U24 plain (if D < 10mm), including bending, cutting to length and supplying and installing all tying wire, accessories and consumables			
I	General reinforcing bars in columns, 32mm diameter	65.534	kg
J	Ditto, 25mm diameter	51.620	kg
K	Ditto, 19mm diameter	576	kg
L	Ditto, 16mm diameter	5.540	kg
M	Stirrups and ties in columns, 13mm diameter	94.655	kg
N	Ditto, 10mm diameter	6.979	kg

BILL NO. 2: BASEMENT			
SUB BILL NO. 2.2:			
STRUCTURAL FRAME			
Code	Description	Quantity	Unit
	Bar reinforcement; high tensile steel U40 deformed (if D ≥ 10mm), U24 plain (if D < 10mm), including bending, cutting to length and supplying and installing all tying wire, accessories and consumables		
A	Reinforcing bars in core walls (ratio 240kg/m3)	264.000	kg
B	General reinforcing bars in suspended slabs, 22mm diameter	131.064	kg
C	Ditto, 19mm diameter	284.811	kg
D	Ditto, 16mm diameter	358.438	kg
E	Ditto, 13mm diameter	7.249	kg
F	Ditto, 10mm diameter	1.199	kg
G	General reinforcing bars in suspended beams, 25mm diameter	129.892	kg
H	Ditto, 22mm diameter	7.582	kg
I	Ditto, 19mm diameter	3.885	kg
J	Ditto, 16mm diameter	5.398	kg
K	Ditto, 13mm diameter	10.576	kg
L	Stirrups and ties in suspended beams, 10mm diameter	39.799	kg
M	Reinforcing bars in ramps (ratio 180kg/m3)	10.800	kg
B	General reinforcing bars in basement walls, 16mm diameter	13.457	kg
O	Ditto, 13mm diameter	22.643	kg
P	Ditto, 10mm diameter	958	kg

Formwork			
Code	Description	Quantity	Unit
A	To sides of columns	2.301	m2
B	To sides of core walls	5.180	m2
C	To soffits of suspended slab	2.939	m2
D	Ditto, kingpost area	5.698	m2
E	To edges of suspended slab	419	m2
F	To sides and soffits of suspended beams	4.164	m2
G	To sides and soffits of ramps	650	m2
H	To side of basement walls	1.763	m2

Lampiran 5 Analisis durasi pekerjaan metode *top down*

No	Jenis pekerjaan	Volume pekerjaan	Satuan	Produktivitas	Satuan	Jumlah pekerja / alat	Durasi (hari)
1	Pekerjaan D-Wall						
	Pembesian	797155.9	kg	300	kg/orang/hari	75	36
	Galian tanah	5544	m3	90	m3 / jam / alat	4	2
	Pengecoran	5544	m3	25	m3 / jam / alat	5	6
2	Pekerjaan Bore pile D = 0.8 m						
	Pengeboran	140	titik	3	titik / hari / alat	5	10
	Pembesian	191126.32	kg	300	kg/orang/hari	60	11
	Pengecoran	1126.02	m3	25	m3 / jam / alat	4	2
3	Pekerjaan Bore pile D = 1.2 m						
	Pengeboran	49	titik	3	titik / hari / alat	5	4
	Pembesian	135133.933	kg	300	kg/orang/hari	60	8
	Pengecoran	886.704	m3	25	m3 / jam / alat	4	2
4	Pekerjaan tanam King post						
		44	tiang	3	titik / hari / alat	8	2
5	Pekerjaan Capping beam						
	Pembesian	27041.75427	kg	300	kg/orang/hari	55	2
	Bekisting	756	m2	5	m2/orang/hari	72	3
	Pengecoran	302.4	m3	25	m3 / jam / alat	4	1
6	Pekerjaan galian B1						
	Area void B1	1348.72	m3	423.44	m3/alat/hari	2	2
	Area B1-1	1348.72	m3	423.44	m3/alat/hari	2	2
	Area B1-2	1348.72	m3	423.44	m3/alat/hari	2	2
	Area B1-3	1348.72	m3	423.44	m3/alat/hari	2	2
	Area B1-4	1348.72	m3	423.44	m3/alat/hari	2	2
	Area B1-5	1348.72	m3	423.44	m3/alat/hari	2	2
	Area B1-6	1348.72	m3	423.44	m3/alat/hari	2	2
	Area B1-7	1348.72	m3	423.44	m3/alat/hari	2	2
7	Pekerjaan ring slab B1						
	Zona 1						
	Pemadatan tanah	574	m2	10	m2/orang/hari	30	2
	Penghamparan sirtu	574	m2	15	m2/orang/hari	25	2
	Gelar plywood	574	m2	25	m2/orang/hari	20	2
	Pembesian slab	65230.084	kg	300	kg/orang/hari	50	5
	Pengecoran slab	421.143	m3	25	m3 / jam / alat	2	2
	Zona 2						
	Pemadatan tanah	574	m2	10	m2/orang/hari	30	2
	Penghamparan sirtu	574	m2	15	m2/orang/hari	25	2
	Gelar plywood	574	m2	25	m2/orang/hari	20	2
	Pembesian slab	65230.084	kg	300	kg/orang/hari	55	4
	Pengecoran slab	421.143	m3	25	m3 / jam / alat	2	2
	Zona 3						

	Pemadatan tanah	574	m2	10	m2/orang/hari	30	2
	Penghamparan sirtu	574	m2	15	m2/orang/hari	25	2
	Gelar <i>plywood</i>	574	m2	25	m2/orang/hari	20	2
	Pembesian <i>slab</i>	65230.084	kg	300	kg/orang/hari	55	4
	Pengecoran <i>slab</i>	421.143	m3	25	m3 / jam / alat	2	2
	Zona 4						
	Pemadatan tanah	574	m2	10	m2/orang/hari	30	2
	Penghamparan sirtu	574	m2	15	m2/orang/hari	25	2
	Gelar <i>plywood</i>	574	m2	25	m2/orang/hari	20	2
	Pembesian <i>slab</i>	65230.084	kg	300	kg/orang/hari	55	4
	Pengecoran <i>slab</i>	421.143	m3	25	m3 / jam / alat	2	2
	Zona 5						
	Pemadatan tanah	574	m2	10	m2/orang/hari	30	2
	Penghamparan sirtu	574	m2	15	m2/orang/hari	25	2
	Gelar <i>plywood</i>	574	m2	25	m2/orang/hari	20	2
	Pembesian <i>slab</i>	65230.084	kg	300	kg/orang/hari	55	4
	Pengecoran <i>slab</i>	421.143	m3	25	m3 / jam / alat	2	2
	Zona 6						
	Pemadatan tanah	574	m2	10	m2/orang/hari	30	2
	Penghamparan sirtu	574	m2	15	m2/orang/hari	25	2
	Gelar <i>plywood</i>	574	m2	25	m2/orang/hari	20	2
	Pembesian <i>slab</i>	65230.084	kg	300	kg/orang/hari	55	4
	Pengecoran <i>slab</i>	421.143	m3	25	m3 / jam / alat	2	2
	Zona 7						
	Pemadatan tanah	574	m2	10	m2/orang/hari	30	2
	Penghamparan sirtu	574	m2	15	m2/orang/hari	25	2
	Gelar <i>plywood</i>	574	m2	25	m2/orang/hari	20	2
	Pembesian <i>slab</i>	65230.084	kg	300	kg/orang/hari	55	4
	Pengecoran <i>slab</i>	421.143	m3	25	m3 / jam / alat	2	2
8	Pekerjaan galian B2						
	Area <i>void</i> B2	1348.72	m3	423.44	m3/alat/hari	2	8
	Area B2-1	1348.72	m3	245.84	m3/alat/hari	3	2
	Area B2-2	1348.72	m3	245.84	m3/alat/hari	3	2
	Area B2-3	1348.72	m3	245.84	m3/alat/hari	3	2
	Area B2-4	1348.72	m3	245.84	m3/alat/hari	3	2
	Area B2-5	1348.72	m3	245.84	m3/alat/hari	3	2
	Area B2-6	1348.72	m3	245.84	m3/alat/hari	3	2
	Area B2-7	1348.72	m3	245.84	m3/alat/hari	3	2
9	Pekerjaan <i>ring slab</i> B2						
	Zona 1						
	Pemadatan tanah	574	m2	10	m2/orang/hari	30	2
	Penghamparan sirtu	574	m2	15	m2/orang/hari	25	2
	Gelar <i>plywood</i>	574	m2	25	m2/orang/hari	20	2
	Pembesian <i>slab</i>	65230.084	kg	300	kg/orang/hari	55	4

	Pengecoran <i>slab</i>	421.143	m3	25	m3 / jam / alat	2	2
	Zona 2						
	Pemadatan tanah	574	m2	10	m2/orang/hari	30	2
	Penghamparan sirtu	574	m2	15	m2/orang/hari	25	2
	Gelar <i>plywood</i>	574	m2	25	m2/orang/hari	20	2
	Pembesian <i>slab</i>	65230.084	kg	300	kg/orang/hari	55	4
	Pengecoran <i>slab</i>	421.143	m3	25	m3 / jam / alat	2	2
	Zona 3						
	Pemadatan tanah	574	m2	10	m2/orang/hari	30	2
	Penghamparan sirtu	574	m2	15	m2/orang/hari	25	2
	Gelar <i>plywood</i>	574	m2	25	m2/orang/hari	20	2
	Pembesian <i>slab</i>	65230.084	kg	300	kg/orang/hari	55	4
	Pengecoran <i>slab</i>	421.143	m3	25	m3 / jam / alat	2	2
	Zona 4						
	Pemadatan tanah	574	m2	10	m2/orang/hari	30	2
	Penghamparan sirtu	574	m2	15	m2/orang/hari	25	2
	Gelar <i>plywood</i>	574	m2	25	m2/orang/hari	20	2
	Pembesian <i>slab</i>	65230.084	kg	300	kg/orang/hari	55	4
	Pengecoran <i>slab</i>	421.143	m3	25	m3 / jam / alat	2	2
	Zona 5						
	Pemadatan tanah	574	m2	10	m2/orang/hari	30	2
	Penghamparan sirtu	574	m2	15	m2/orang/hari	25	2
	Gelar <i>plywood</i>	574	m2	25	m2/orang/hari	20	2
	Pembesian <i>slab</i>	65230.084	kg	300	kg/orang/hari	55	4
	Pengecoran <i>slab</i>	421.143	m3	25	m3 / jam / alat	2	2
	Zona 6						
	Pemadatan tanah	574	m2	10	m2/orang/hari	30	2
	Penghamparan sirtu	574	m2	15	m2/orang/hari	25	2
	Gelar <i>plywood</i>	574	m2	25	m2/orang/hari	20	2
	Pembesian <i>slab</i>	65230.084	kg	300	kg/orang/hari	55	4
	Pengecoran <i>slab</i>	421.143	m3	25	m3 / jam / alat	2	2
	Zona 7						
	Pemadatan tanah	574	m2	10	m2/orang/hari	30	2
	Penghamparan sirtu	574	m2	15	m2/orang/hari	25	2
	Gelar <i>plywood</i>	574	m2	25	m2/orang/hari	20	2
	Pembesian <i>slab</i>	65230.084	kg	300	kg/orang/hari	55	4
	Pengecoran <i>slab</i>	421.143	m3	25	m3 / jam / alat	2	2
10	Pekerjaan galian B3						
	Area <i>void</i> B3	1348.72	m3	423.44	m3/alat/hari	2	8
	Area B3-1	1348.72	m3	245.84	m3/alat/hari	3	2
	Area B3-2	1348.72	m3	245.84	m3/alat/hari	3	2
	Area B3-3	1348.72	m3	245.84	m3/alat/hari	3	2
	Area B3-4	1348.72	m3	245.84	m3/alat/hari	3	2
	Area B3-5	1348.72	m3	245.84	m3/alat/hari	3	2

	Area B3-6	1348.72	m3	245.84	m3/alat/hari	3	2
	Area B3-7	1348.72	m3	245.84	m3/alat/hari	3	2
11	Pekerjaan <i>ring slab</i> B3						
	Zona 1						
	Pemadatan tanah	574	m2	10	m2/orang/hari	30	2
	Penghamparan sirtu	574	m2	15	m2/orang/hari	25	2
	Gelar <i>plywood</i>	574	m2	25	m2/orang/hari	20	2
	Pembesian <i>slab</i>	65230.084	kg	300	kg/orang/hari	55	4
	Pengecoran <i>slab</i>	421.143	m3	25	m3 / jam / alat	2	2
	Zona 2						
	Pemadatan tanah	574	m2	10	m2/orang/hari	30	2
	Penghamparan sirtu	574	m2	15	m2/orang/hari	25	2
	Gelar <i>plywood</i>	574	m2	25	m2/orang/hari	20	2
	Pembesian <i>slab</i>	65230.084	kg	300	kg/orang/hari	55	4
	Pengecoran <i>slab</i>	421.143	m3	25	m3 / jam / alat	2	2
	Zona 3						
	Pemadatan tanah	574	m2	10	m2/orang/hari	30	2
	Penghamparan sirtu	574	m2	15	m2/orang/hari	25	2
	Gelar <i>plywood</i>	574	m2	25	m2/orang/hari	20	2
	Pembesian <i>slab</i>	65230.084	kg	300	kg/orang/hari	55	4
	Pengecoran <i>slab</i>	421.143	m3	25	m3 / jam / alat	2	2
	Zona 4						
	Pemadatan tanah	574	m2	10	m2/orang/hari	30	2
	Penghamparan sirtu	574	m2	15	m2/orang/hari	25	2
	Gelar <i>plywood</i>	574	m2	25	m2/orang/hari	20	2
	Pembesian <i>slab</i>	65230.084	kg	300	kg/orang/hari	55	4
	Pengecoran <i>slab</i>	421.143	m3	25	m3 / jam / alat	2	2
	Zona 5						
	Pemadatan tanah	574	m2	10	m2/orang/hari	30	2
	Penghamparan sirtu	574	m2	15	m2/orang/hari	25	2
	Gelar <i>plywood</i>	574	m2	25	m2/orang/hari	20	2
	Pembesian <i>slab</i>	65230.084	kg	300	kg/orang/hari	45	5
	Pengecoran <i>slab</i>	421.143	m3	25	m3 / jam / alat	2	2
	Zona 6						
	Pemadatan tanah	574	m2	10	m2/orang/hari	30	2
	Penghamparan sirtu	574	m2	15	m2/orang/hari	25	2
	Gelar <i>plywood</i>	574	m2	25	m2/orang/hari	20	2
	Pembesian <i>slab</i>	65230.084	kg	300	kg/orang/hari	55	4
	Pengecoran <i>slab</i>	421.143	m3	25	m3 / jam / alat	2	2
	Zona 7						
	Pemadatan tanah	574	m2	10	m2/orang/hari	30	2
	Penghamparan sirtu	574	m2	15	m2/orang/hari	25	2
	Gelar <i>plywood</i>	574	m2	25	m2/orang/hari	20	2
	Pembesian <i>slab</i>	65230.084	kg	300	kg/orang/hari	55	4

	Pengecoran <i>slab</i>	421.143	m3	25	m3 / jam / alat	2	2
12	Pekerjaan galian B4						
	Area <i>void</i> B4	2123.13	m3	423.44	m3/alat/hari	2	11
	Area B4-1	2123.13	m3	245.84	m3/alat/hari	3	3
	Area B4-2	2123.13	m3	245.84	m3/alat/hari	3	3
	Area B4-3	2123.13	m3	245.84	m3/alat/hari	3	3
	Area B4-4	2123.13	m3	245.84	m3/alat/hari	3	3
	Area B4-5	2123.13	m3	245.84	m3/alat/hari	3	3
	Area B4-6	2123.13	m3	245.84	m3/alat/hari	3	3
	Area B4-7	2123.13	m3	245.84	m3/alat/hari	3	3
13	Pekerjaan <i>ring slab</i> B4						
	Zona 1						
	Pemadatan tanah	574	m2	10	m2/orang/hari	30	2
	Penghamparan sirtu	574	m2	15	m2/orang/hari	25	2
	Gelar <i>plywood</i>	574	m2	25	m2/orang/hari	20	2
	Pembesian <i>slab</i>	65230.084	kg	300	kg/orang/hari	55	4
	Pengecoran <i>slab</i>	421.143	m3	25	m3 / jam / alat	2	2
	Zona 2						
	Pemadatan tanah	574	m2	10	m2/orang/hari	30	2
	Penghamparan sirtu	574	m2	15	m2/orang/hari	25	2
	Gelar <i>plywood</i>	574	m2	25	m2/orang/hari	20	2
	Pembesian <i>slab</i>	65230.084	kg	300	kg/orang/hari	55	4
	Pengecoran <i>slab</i>	421.143	m3	25	m3 / jam / alat	2	2
	Zona 3						
	Pemadatan tanah	574	m2	10	m2/orang/hari	30	2
	Penghamparan sirtu	574	m2	15	m2/orang/hari	25	2
	Gelar <i>plywood</i>	574	m2	25	m2/orang/hari	20	2
	Pembesian <i>slab</i>	65230.084	kg	300	kg/orang/hari	55	4
	Pengecoran <i>slab</i>	421.143	m3	25	m3 / jam / alat	2	2
	Zona 4						
	Pemadatan tanah	574	m2	10	m2/orang/hari	30	2
	Penghamparan sirtu	574	m2	15	m2/orang/hari	25	2
	Gelar <i>plywood</i>	574	m2	25	m2/orang/hari	20	2
	Pembesian <i>slab</i>	65230.084	kg	300	kg/orang/hari	55	4
	Pengecoran <i>slab</i>	421.143	m3	25	m3 / jam / alat	2	2
	Zona 5						
	Pemadatan tanah	574	m2	10	m2/orang/hari	30	2
	Penghamparan sirtu	574	m2	15	m2/orang/hari	25	2
	Gelar <i>plywood</i>	574	m2	25	m2/orang/hari	20	2
	Pembesian <i>slab</i>	65230.084	kg	300	kg/orang/hari	55	4
	Pengecoran <i>slab</i>	421.143	m3	25	m3 / jam / alat	2	2
	Zona 6						
	Pemadatan tanah	574	m2	10	m2/orang/hari	30	2
	Penghamparan sirtu	574	m2	15	m2/orang/hari	25	2

	Gelar <i>plywood</i>	574	m2	25	m2/orang/hari	20	2
	Pembesian <i>slab</i>	65230.084	kg	300	kg/orang/hari	55	4
	Pengecoran <i>slab</i>	421.143	m3	25	m3 / jam / alat	2	2
	Zona 7						
	Pemadatan tanah	574	m2	10	m2/orang/hari	30	2
	Penghamparan sirtu	574	m2	15	m2/orang/hari	20	2
	Gelar <i>plywood</i>	574	m2	25	m2/orang/hari	20	2
	Pembesian <i>slab</i>	65230.084	kg	300	kg/orang/hari	55	4
	Pengecoran <i>slab</i>	421.143	m3	25	m3 / jam / alat	2	2
14	Pekerjaan <i>Matt foundation</i>						
	Pekerjaan galian tanah	1920	m3	245.84	m3/alat/hari	5	2
	Pekerjaan bobok <i>bore pile</i>	189	tiang	6	tiang / hari / alat	6	6
	Pekerjaan pemadatan tanah	4196	m2	10	m2/orang/hari	55	8
	Pengecoran lantai kerja	209.8	m3	8	m2/orang/hari	20	2
	Pembesian	2140090	kg	300	kg/orang/hari	150	48
	Pengecoran	5419	m3	25	m3 / jam / alat	5	6
	<i>Curing Matt foundation</i>	-	-	-	-	-	12
15	Pengecoran Kolom B4-B3						
	Kolom B4 zona 1						
	Pembesian	1708.952	kg	300	kg/orang/hari	8	1
	Bekisting	49	m2	2	m2/orang/hari	25	1
	Pengecoran	8.6	m3	25	m3 / jam / alat	1	1
	Kolom B4 zona 2						
	Pembesian	4486.7141	kg	300	kg/orang/hari	15	1
	Bekisting	121.1	m2	2	m2/orang/hari	35	2
	Pengecoran	26.4	m3	25	m3 / jam / alat	1	1
	Kolom B4 zona 3						
	Pembesian	4088.3072	kg	300	kg/orang/hari	15	1
	Bekisting	118.3	m2	2	m2/orang/hari	35	2
	Pengecoran	25.76	m3	25	m3 / jam / alat	1	1
	Kolom B4 zona 4						
	Pembesian	5206.1916	kg	300	kg/orang/hari	20	1
	Bekisting	75.6	m2	2	m2/orang/hari	35	2
	Pengecoran	17.22	m3	25	m3 / jam / alat	1	1
	Kolom B4 zona 5						
	Pembesian	2617.7566	kg	300	kg/orang/hari	20	1
	Bekisting	67.2	m2	2	m2/orang/hari	30	2
	Pengecoran	14	m3	25	m3 / jam / alat	1	1
	Kolom B4 zona 6						
	Pembesian	1103.4122	kg	300	kg/orang/hari	20	1
	Bekisting	26.6	m2	2	m2/orang/hari	15	1
	Pengecoran	6.16	m3	25	m3 / jam / alat	1	1
	Kolom B4 zona 7						
	Pembesian	839.5904	kg	300	kg/orang/hari	20	1

	Bekisting	30.8	m2	2	m2/orang/hari	16	1
	Pengecoran	5.74	m3	25	m3 / jam / alat	1	1
16	Area B4 Void						
	<i>B4 Void 1 (Slab, Core wall, kolom)</i>						
	<i>Slab</i>						
	Perancah / Scaffolding	315	m2	15	m2/orang/hari	20	2
	Gelar plywood	315	m2	25	m2/orang/hari	20	1
	Bekisting	626.84	m2	5	m2/orang/hari	70	2
	Pembesian	65230.084	kg	300	kg/orang/hari	60	4
	Pengecoran	421.143	m3	25	m3 / jam / alat	2	2
	<i>Kolom + Core wall</i>						
	Pembesian	13736.3698	kg	300	kg/orang/hari	40	2
	Bekisting	203.7	m2	2	m2/orang/hari	55	2
	Pengecoran	38.941	m3	25	m3 / jam / alat	2	1
	<i>B4 Void 2 (Slab, Core wall, kolom)</i>						
	<i>Slab</i>						
	Perancah / Scaffolding	242	m2	15	m2/orang/hari	20	1
	Gelar plywood	242	m2	25	m2/orang/hari	20	1
	Bekisting	626.84	m2	5	m2/orang/hari	70	2
	Pembesian	65230.084	kg	300	kg/orang/hari	60	4
	Pengecoran	421.143	m3	25	m3 / jam / alat	2	2
	<i>Kolom + Core wall</i>						
	Pembesian	11833.6955	kg	300	kg/orang/hari	40	1
	Bekisting	144.055	m2	2	m2/orang/hari	55	2
	Pengecoran	28.412	m3	25	m3 / jam / alat	2	1
	<i>B4 Void 3 (Slab, Core wall, kolom)</i>						
	<i>Slab</i>						
	Perancah / Scaffolding	426	m2	15	m2/orang/hari	20	2
	Gelar plywood	426	m2	25	m2/orang/hari	20	1
	Bekisting	626.84	m2	5	m2/orang/hari	70	2
	Pembesian	65230.084	kg	300	kg/orang/hari	60	4
	Pengecoran	421.143	m3	25	m3 / jam / alat	2	2
	<i>Kolom + Core wall</i>						
	Pembesian	22300.6591	kg	300	kg/orang/hari	40	2
	Bekisting	324.275	m2	2	m2/orang/hari	55	3
	Pengecoran	61.22	m3	25	m3 / jam / alat	2	1
	<i>B4 Void 4 (Slab, Core wall, kolom)</i>						
	<i>Slab</i>						
	Perancah / Scaffolding	480	m2	15	m2/orang/hari	20	2
	Gelar plywood	480	m2	25	m2/orang/hari	20	1
	Bekisting	626.84	m2	5	m2/orang/hari	70	2
	Pembesian	65230.084	kg	300	kg/orang/hari	60	4
	Pengecoran	421.143	m3	25	m3 / jam / alat	2	2
	<i>Kolom + Core wall</i>						

	Pembesian	12377.1945	kg	300	kg/orang/hari	40	2
	Bekisting	257.11	m2	2	m2/orang/hari	55	3
	Pengecoran	42.493	m3	25	m3 / jam / alat	2	1
17	Pengecoran Kolom B3-B2						
	Kolom B3 zona 1						
	Pembesian	1708.952	kg	300	kg/orang/hari	8	1
	Bekisting	49	m2	2	m2/orang/hari	25	1
	Pengecoran	8.6	m3	25	m3 / jam / alat	1	1
	Kolom B3 zona 2						
	Pembesian	4486.7141	kg	300	kg/orang/hari	15	1
	Bekisting	121.1	m2	2	m2/orang/hari	65	1
	Pengecoran	26.4	m3	25	m3 / jam / alat	1	1
	Kolom B3 zona 3						
	Pembesian	4088.3072	kg	300	kg/orang/hari	15	1
	Bekisting	118.3	m2	2	m2/orang/hari	60	1
	Pengecoran	25.76	m3	25	m3 / jam / alat	1	1
	Kolom B3 zona 4						
	Pembesian	5206.1916	kg	300	kg/orang/hari	20	1
	Bekisting	75.6	m2	2	m2/orang/hari	40	1
	Pengecoran	17.22	m3	25	m3 / jam / alat	1	1
	Kolom B3 zona 5						
	Pembesian	2617.7566	kg	300	kg/orang/hari	20	1
	Bekisting	67.2	m2	2	m2/orang/hari	30	2
	Pengecoran	14	m3	25	m3 / jam / alat	1	1
	Kolom B3 zona 6						
	Pembesian	1103.4122	kg	300	kg/orang/hari	20	1
	Bekisting	26.6	m2	2	m2/orang/hari	15	1
	Pengecoran	6.16	m3	25	m3 / jam / alat	1	1
	Kolom B3 zona 7						
	Pembesian	839.5904	kg	300	kg/orang/hari	20	1
	Bekisting	30.8	m2	2	m2/orang/hari	16	1
	Pengecoran	5.74	m3	25	m3 / jam / alat	1	1
18	Area B3 Void						
	B3 Void 1 (Slab, Core wall, kolom)						
	Slab						
	Perancah / Scaffolding	315	m2	15	m2/orang/hari	20	2
	Gelar plywood	315	m2	25	m2/orang/hari	20	1
	Bekisting	626.84	m2	5	m2/orang/hari	70	2
	Pembesian	65230.084	kg	300	kg/orang/hari	60	4
	Pengecoran	421.143	m3	25	m3 / jam / alat	2	2
	Kolom + Core wall						
	Pembesian	13736.3698	kg	300	kg/orang/hari	40	2
	Bekisting	203.7	m2	2	m2/orang/hari	55	2
	Pengecoran	38.941	m3	25	m3 / jam / alat	2	1

B3 Void 2 (Slab, Core wall, kolom)

Slab

Perancah / Scaffolding	242	m2	15	m2/orang/hari	20	1
Gelar plywood	242	m2	25	m2/orang/hari	20	1
Bekisting	626.84	m2	5	m2/orang/hari	70	2
Pembesian	65230.084	kg	300	kg/orang/hari	60	4
Pengecoran	421.143	m3	25	m3 / jam / alat	2	2

Kolom + Core wall

Pembesian	11833.6955	kg	300	kg/orang/hari	40	1
Bekisting	144.055	m2	2	m2/orang/hari	65	2
Pengecoran	28.412	m3	25	m3 / jam / alat	2	1

B3 Void 3 (Slab, Core wall, kolom)

Slab

Perancah / Scaffolding	426	m2	15	m2/orang/hari	20	2
Gelar plywood	426	m2	25	m2/orang/hari	20	1
Bekisting	626.84	m2	5	m2/orang/hari	70	2
Pembesian	65230.084	kg	300	kg/orang/hari	60	4
Pengecoran	421.143	m3	25	m3 / jam / alat	2	2

Kolom + Core wall

Pembesian	22300.6591	kg	300	kg/orang/hari	40	2
Bekisting	324.275	m2	2	m2/orang/hari	55	3
Pengecoran	61.22	m3	25	m3 / jam / alat	2	1

B3 Void 4 (Slab, Core wall, kolom)

Slab

Perancah / Scaffolding	480	m2	15	m2/orang/hari	20	2
Gelar plywood	480	m2	25	m2/orang/hari	20	1
Bekisting	626.84	m2	5	m2/orang/hari	70	2
Pembesian	65230.084	kg	300	kg/orang/hari	60	4
Pengecoran	421.143	m3	25	m3 / jam / alat	2	2

Kolom + Core wall

Pembesian	12377.1945	kg	300	kg/orang/hari	40	2
Bekisting	257.11	m2	2	m2/orang/hari	55	3
Pengecoran	42.493	m3	25	m3 / jam / alat	2	1

19 Pengecoran Kolom B2-B1

Kolom B2 zona 1

Pembesian	1708.952	kg	300	kg/orang/hari	8	1
Bekisting	49	m2	2	m2/orang/hari	25	1
Pengecoran	8.6	m3	25	m3 / jam / alat	1	1

Kolom B2 zona 2

Pembesian	4486.7141	kg	300	kg/orang/hari	15	1
Bekisting	121.1	m2	2	m2/orang/hari	65	1
Pengecoran	26.4	m3	25	m3 / jam / alat	1	1

Kolom B2 zona 3

Pembesian	4088.3072	kg	300	kg/orang/hari	15	1
-----------	-----------	----	-----	---------------	----	---

	Bekisting	118.3	m2	2	m2/orang/hari	60	1
	Pengecoran	25.76	m3	25	m3 / jam / alat	1	1
	Kolom B2 zona 4						
	Pembesian	5206.1916	kg	300	kg/orang/hari	20	1
	Bekisting	75.6	m2	2	m2/orang/hari	40	1
	Pengecoran	17.22	m3	25	m3 / jam / alat	1	1
	Kolom B2 zona 5						
	Pembesian	2617.7566	kg	300	kg/orang/hari	20	1
	Bekisting	67.2	m2	2	m2/orang/hari	30	2
	Pengecoran	14	m3	25	m3 / jam / alat	1	1
	Kolom B2 zona 6						
	Pembesian	1103.4122	kg	300	kg/orang/hari	20	1
	Bekisting	26.6	m2	2	m2/orang/hari	15	1
	Pengecoran	6.16	m3	25	m3 / jam / alat	1	1
	Kolom B2 zona 7						
	Pembesian	839.5904	kg	300	kg/orang/hari	20	1
	Bekisting	30.8	m2	2	m2/orang/hari	16	1
	Pengecoran	5.74	m3	25	m3 / jam / alat	1	1
20	Area B2 Void						
	B2 Void 1 (Slab, Core wall, kolom)						
	Slab						
	Perancah / Scaffolding	315	m2	15	m2/orang/hari	20	2
	Gelar plywood	315	m2	25	m2/orang/hari	20	1
	Bekisting	626.84	m2	5	m2/orang/hari	70	2
	Pembesian	65230.084	kg	300	kg/orang/hari	60	4
	Pengecoran	421.143	m3	25	m3 / jam / alat	2	2
	Kolom + Core wall						
	Pembesian	13736.3698	kg	300	kg/orang/hari	40	2
	Bekisting	203.7	m2	2	m2/orang/hari	55	2
	Pengecoran	38.941	m3	25	m3 / jam / alat	2	1
	B2 Void 2 (Slab, Core wall, kolom)						
	Slab						
	Perancah / Scaffolding	242	m2	15	m2/orang/hari	20	1
	Gelar plywood	242	m2	25	m2/orang/hari	20	1
	Bekisting	626.84	m2	5	m2/orang/hari	70	2
	Pembesian	65230.084	kg	300	kg/orang/hari	60	4
	Pengecoran	421.143	m3	25	m3 / jam / alat	2	2
	Kolom + Core wall						
	Pembesian	11833.6955	kg	300	kg/orang/hari	40	1
	Bekisting	144.055	m2	2	m2/orang/hari	65	2
	Pengecoran	28.412	m3	25	m3 / jam / alat	2	1
	B2 Void 3 (Slab, Core wall, kolom)						
	Slab						
	Perancah / Scaffolding	426	m2	15	m2/orang/hari	20	2

	Gelar plywood	426	m2	25	m2/orang/hari	20	1
	Bekisting	626.84	m2	5	m2/orang/hari	70	2
	Pembesian	65230.084	kg	300	kg/orang/hari	60	4
	Pengecoran	421.143	m3	25	m3 / jam / alat	2	2
	<i>Kolom + Core wall</i>						
	Pembesian	22300.6591	kg	300	kg/orang/hari	45	2
	Bekisting	324.275	m2	2	m2/orang/hari	55	3
	Pengecoran	61.22	m3	25	m3 / jam / alat	2	1
	<i>B2 Void 4 (Slab, Core wall, kolom)</i>						
	<i>Slab</i>						
	Perancah / Scaffolding	480	m2	15	m2/orang/hari	20	2
	Gelar plywood	480	m2	25	m2/orang/hari	20	1
	Bekisting	626.84	m2	5	m2/orang/hari	70	2
	Pembesian	65230.084	kg	300	kg/orang/hari	60	4
	Pengecoran	421.143	m3	25	m3 / jam / alat	2	2
	<i>Kolom + Core wall</i>						
	Pembesian	12377.1945	kg	300	kg/orang/hari	40	2
	Bekisting	257.11	m2	2	m2/orang/hari	55	3
	Pengecoran	42.493	m3	25	m3 / jam / alat	2	1
19	<i>Pengecoran Kolom B1-GF</i>						
	<i>Kolom B1 zona 1</i>						
	Pembesian	2709.797	kg	300	kg/orang/hari	8	2
	Bekisting	12.84	m2	2	m2/orang/hari	25	1
	Pengecoran	86.9	m3	25	m3 / jam / alat	1	1
	<i>Kolom B1 zona 2</i>						
	Pembesian	5780.493	kg	300	kg/orang/hari	15	2
	Bekisting	148.03	m2	2	m2/orang/hari	65	2
	Pengecoran	32.37	m3	25	m3 / jam / alat	1	1
	<i>Kolom B1 zona 3</i>						
	Pembesian	3615.94	kg	300	kg/orang/hari	15	1
	Bekisting	96.09	m2	2	m2/orang/hari	60	1
	Pengecoran	24.03	m3	25	m3 / jam / alat	1	1
	<i>Kolom B1 zona 4</i>						
	Pembesian	5699.773	kg	300	kg/orang/hari	20	1
	Bekisting	84.24	m2	2	m2/orang/hari	40	2
	Pengecoran	18.19	m3	25	m3 / jam / alat	1	1
	<i>Kolom B1 zona 5</i>						
	Pembesian	2437.17	kg	300	kg/orang/hari	20	1
	Bekisting	63.20	m2	2	m2/orang/hari	30	2
	Pengecoran	12.64	m3	25	m3 / jam / alat	1	1
	<i>Kolom B1 zona 6</i>						
	Pembesian	2531.965	kg	300	kg/orang/hari	20	1
	Bekisting	80.86	m2	2	m2/orang/hari	15	3
	Pengecoran	14.75	m3	25	m3 / jam / alat	1	1

	Kolom B1 zona 7						
	Pembesian	2883.223	kg	300	kg/orang/hari	20	1
	Bekisting	82.16	m2	2	m2/orang/hari	16	3
	Pengecoran	14.54	m3	25	m3 / jam / alat	1	1
20	Area B1 Void						
	B1 Void 1 (Slab, Core wall, kolom)						
	Slab						
	Perancah / Scaffolding	315	m2	15	m2/orang/hari	20	2
	Gelar plywood	315	m2	25	m2/orang/hari	20	1
	Bekisting	626.84	m2	5	m2/orang/hari	70	2
	Pembesian	65230.084	kg	300	kg/orang/hari	60	4
	Pengecoran	421.143	m3	25	m3 / jam / alat	2	2
	Kolom + Core wall						
	Pembesian	15578.506	kg	300	kg/orang/hari	40	2
	Bekisting	229.89	m2	2	m2/orang/hari	60	2
	Pengecoran	43.925	m3	25	m3 / jam / alat	2	1
	B1 Void 2 (Slab, Core wall, kolom)						
	Slab						
	Perancah / Scaffolding	242	m2	15	m2/orang/hari	20	1
	Gelar plywood	242	m2	25	m2/orang/hari	20	1
	Bekisting	626.84	m2	5	m2/orang/hari	70	2
	Pembesian	65230.084	kg	300	kg/orang/hari	60	4
	Pengecoran	421.143	m3	25	m3 / jam / alat	2	2
	Kolom + Core wall						
	Pembesian	13444.842	kg	300	kg/orang/hari	40	2
	Bekisting	162.543	m2	2	m2/orang/hari	65	2
	Pengecoran	32.07	m3	25	m3 / jam / alat	2	1
	B1 Void 3 (Slab, Core wall, kolom)						
	Slab						
	Perancah / Scaffolding	426	m2	15	m2/orang/hari	20	2
	Gelar plywood	426	m2	25	m2/orang/hari	20	1
	Bekisting	626.84	m2	5	m2/orang/hari	70	2
	Pembesian	65230.084	kg	300	kg/orang/hari	60	4
	Pengecoran	421.143	m3	25	m3 / jam / alat	2	2
	Kolom + Core wall						
	Pembesian	25287.734	kg	300	kg/orang/hari	45	2
	Bekisting	365.97	m2	2	m2/orang/hari	85	3
	Pengecoran	69.06	m3	25	m3 / jam / alat	2	1
	B1 Void 4 (Slab, Core wall, kolom)						
	Slab						
	Perancah / Scaffolding	480	m2	15	m2/orang/hari	20	2
	Gelar plywood	480	m2	25	m2/orang/hari	20	1
	Bekisting	626.84	m2	5	m2/orang/hari	70	2
	Pembesian	65230.084	kg	300	kg/orang/hari	60	4

Pengecoran	421.143	m3	25	m3 / jam / alat	2	2
Kolom + <i>Core wall</i>						
Pembesian	14050.139	kg	300	kg/orang/hari	40	2
Bekisting	290.167	m2	2	m2/orang/hari	85	2
Pengecoran	46.12	m3	25	m3 / jam / alat	2	1

Lampiran 6 Analisis durasi pekerjaan metode *bottom up*

No	Jenis pekerjaan	Volume pekerjaan	Satuan	Produktivitas	Satuan	Jumlah pekerja / alat	Durasi (hari)
1	Pekerjaan D-Wall						
	Pembesian	797155.9	kg	300	kg/orang/hari	75	36
	Galian tanah	5544	m3	90	m3 / jam / alat	4	2
	Pengecoran	5544	m3	25	m3 / jam / alat	5	6
2	Pekerjaan Capping beam						
	Pembesian	27041.75427	kg	300	kg/orang/hari	55	2
	Bekisting	756	m2	5	m2/orang/hari	72	3
	Pengecoran	302.4	m3	25	m3 / jam / alat	4	1
3	Pekerjaan galian						
	Galian tahap 1	9441	m3	423.44	m3/alat/hari	4	6
	Galian tahap 2	27980	m3	423.44	m3/alat/hari	8	9
	Galian tahap 3	16985	m3	423.44	m3/alat/hari	6	7
4	Pekerjaan Ground anchor						
	<i>Proofing test</i>	-	-	-	-	-	2
	Pemasangan <i>ground anchor</i> tahap 1	25	titik	5	titik/grup/hari	2	3
	Pemasangan <i>ground anchor</i> tahap 2	25	titik	5	titik/grup/hari	2	3
5	Pekerjaan Bore pile D = 0.8 m						
	Pengeboran	140	titik	3	titik / hari / alat	5	10
	Pembesian	191126.32	kg	300	kg/orang/hari	65	10
	Pengecoran	1126.02	m3	25	m3 / jam / alat	4	2
6	Pekerjaan Bore pile D = 1.2 m						
	Pengeboran	49	titik	3	titik / hari / alat	5	4
	Pembesian	135133.933	kg	300	kg/orang/hari	65	7
	Pengecoran	886.704	m3	25	m3 / jam / alat	4	2
7	Pekerjaan Matt foundation						
	Pekerjaan galian tanah	1920	m3	423.44	m3/alat/hari	4	2
	Pekerjaan bobok <i>bore pile</i>	189	tiang	6	tiang / hari / alat	6	6
	Pekerjaan pemadatan tanah	4196	m2	10	m2/orang/hari	50	9
	Pengecoran lantai kerja	209.8	m3	8	m2/orang/hari	20	2
	Pembesian	2140090	kg	300	kg/orang/hari	150	48
	Pengecoran	5419	m3	25	m3 / jam / alat	5	6
	<i>Curing Matt foundation</i>	-	-	-	-	-	12
8	Pekerjaan ring slab B4						
	Zona 1						
	Perancah / <i>Scaffolding</i>	574	m2	15	m2/orang/hari	20	2
	Gelar <i>plywood</i>	574	m2	25	m2/orang/hari	20	2
	Bekisting <i>slab</i>	626.84	m2	5	m2/orang/hari	70	2
	Pembesian <i>slab</i>	65230.084	kg	300	kg/orang/hari	55	4
	Pengecoran <i>slab</i>	421.143	m3	25	m3 / jam / alat	2	2
	Kolom B4 zona 1						
	Pembesian	1708.952	kg	300	kg/orang/hari	8	1
	Bekisting	49	m2	2	m2/orang/hari	25	1
	Pengecoran	8.6	m3	25	m3 / jam / alat	1	1
	Zona 2						

Perancah / <i>Scaffolding</i>	574	m2	15	m2/orang/hari	20	2
Gelar <i>plywood</i>	574	m2	25	m2/orang/hari	20	2
Bekisting <i>slab</i>	626.84	m2	5	m2/orang/hari	70	2
Pembesian <i>slab</i>	65230.084	kg	300	kg/orang/hari	55	4
Pengecoran <i>slab</i>	421.143	m3	25	m3 / jam / alat	2	2
Kolom B4 zona 2						
Pembesian	4486.7141	kg	300	kg/orang/hari	15	1
Bekisting	121.1	m2	2	m2/orang/hari	35	2
Pengecoran	26.4	m3	25	m3 / jam / alat	1	1
Zona 3						
Perancah / <i>Scaffolding</i>	574	m2	15	m2/orang/hari	20	2
Gelar <i>plywood</i>	574	m2	25	m2/orang/hari	20	2
Bekisting <i>slab</i>	626.84	m2	5	m2/orang/hari	70	2
Pembesian <i>slab</i>	65230.084	kg	300	kg/orang/hari	55	4
Pengecoran <i>slab</i>	421.143	m3	25	m3 / jam / alat	2	2
Kolom B4 zona 3						
Pembesian	4088.3072	kg	300	kg/orang/hari	15	1
Bekisting	118.3	m2	2	m2/orang/hari	35	2
Pengecoran	25.76	m3	25	m3 / jam / alat	1	1
Zona 4						
Perancah / <i>Scaffolding</i>	574	m2	15	m2/orang/hari	20	2
Gelar <i>plywood</i>	574	m2	25	m2/orang/hari	20	2
Bekisting <i>slab</i>	626.84	m2	5	m2/orang/hari	70	2
Pembesian <i>slab</i>	65230.084	kg	300	kg/orang/hari	55	4
Pengecoran <i>slab</i>	421.143	m3	25	m3 / jam / alat	2	2
Kolom B4 zona 4						
Pembesian	5206.1916	kg	300	kg/orang/hari	20	1
Bekisting	75.6	m2	2	m2/orang/hari	35	2
Pengecoran	17.22	m3	25	m3 / jam / alat	1	1
Zona 5						
Perancah / <i>Scaffolding</i>	574	m2	15	m2/orang/hari	20	2
Gelar <i>plywood</i>	574	m2	25	m2/orang/hari	20	2
Bekisting <i>slab</i>	626.84	m2	5	m2/orang/hari	70	2
Pembesian <i>slab</i>	65230.084	kg	300	kg/orang/hari	55	4
Pengecoran <i>slab</i>	421.143	m3	25	m3 / jam / alat	2	2
Kolom B4 zona 5						
Pembesian	2617.7566	kg	300	kg/orang/hari	20	1
Bekisting	67.2	m2	2	m2/orang/hari	30	2
Pengecoran	14	m3	25	m3 / jam / alat	1	1
Zona 6						
Perancah / <i>Scaffolding</i>	574	m2	15	m2/orang/hari	20	2
Gelar <i>plywood</i>	574	m2	25	m2/orang/hari	20	2
Bekisting <i>slab</i>	626.84	m2	5	m2/orang/hari	70	2
Pembesian <i>slab</i>	65230.084	kg	300	kg/orang/hari	55	4
Pengecoran <i>slab</i>	421.143	m3	25	m3 / jam / alat	2	2
Kolom B4 zona 6						
Pembesian	1103.4122	kg	300	kg/orang/hari	20	1
Bekisting	26.6	m2	2	m2/orang/hari	15	1
Pengecoran	6.16	m3	25	m3 / jam / alat	1	1
Zona 7						
Perancah / <i>Scaffolding</i>	574	m2	15	m2/orang/hari	20	2
Gelar <i>plywood</i>	574	m2	25	m2/orang/hari	20	2

	Bekisting <i>slab</i>	626.84	m2	5	m2/orang/hari	70	2
	Pembesian <i>slab</i>	65230.084	kg	300	kg/orang/hari	55	4
	Pengecoran <i>slab</i>	421.143	m3	25	m3 / jam / alat	2	2
	Kolom B4 zona 7						
	Pembesian	839.5904	kg	300	kg/orang/hari	20	1
	Bekisting	30.8	m2	2	m2/orang/hari	16	1
	Pengecoran	5.74	m3	25	m3 / jam / alat	1	1
9	Area B4 <i>Void</i>						
	B4 <i>Void 1 (Slab, Core wall,</i>						
	kolom)						
	<i>Slab</i>						
	Perancah / <i>Scaffolding</i>	315	m2	15	m2/orang/hari	20	2
	Gelar plywood	315	m2	25	m2/orang/hari	20	1
	Bekisting	626.84	m2	5	m2/orang/hari	70	2
	Pembesian	65230.084	kg	300	kg/orang/hari	60	4
	Pengecoran	421.143	m3	25	m3 / jam / alat	2	2
	Kolom + <i>Core wall</i>						
	Pembesian	13736.3698	kg	300	kg/orang/hari	40	2
	Bekisting	203.7	m2	2	m2/orang/hari	55	2
	Pengecoran	38.941	m3	25	m3 / jam / alat	2	1
	B4 <i>Void 2 (Slab, Core wall,</i>						
	kolom)						
	<i>Slab</i>						
	Perancah / <i>Scaffolding</i>	242	m2	15	m2/orang/hari	20	1
	Gelar plywood	242	m2	25	m2/orang/hari	20	1
	Bekisting	626.84	m2	5	m2/orang/hari	70	2
	Pembesian	65230.084	kg	300	kg/orang/hari	60	4
	Pengecoran	421.143	m3	25	m3 / jam / alat	2	2
	Kolom + <i>Core wall</i>						
	Pembesian	11833.6955	kg	300	kg/orang/hari	40	1
	Bekisting	144.055	m2	2	m2/orang/hari	55	2
	Pengecoran	28.412	m3	25	m3 / jam / alat	2	1
	B4 <i>Void 3 (Slab, Core wall,</i>						
	kolom)						
	<i>Slab</i>						
	Perancah / <i>Scaffolding</i>	426	m2	15	m2/orang/hari	20	2
	Gelar plywood	426	m2	25	m2/orang/hari	20	1
	Bekisting	626.84	m2	5	m2/orang/hari	70	2
	Pembesian	65230.084	kg	300	kg/orang/hari	60	4
	Pengecoran	421.143	m3	25	m3 / jam / alat	2	2
	Kolom + <i>Core wall</i>						
	Pembesian	22300.6591	kg	300	kg/orang/hari	40	2
	Bekisting	324.275	m2	2	m2/orang/hari	55	3
	Pengecoran	61.22	m3	25	m3 / jam / alat	2	1
	B4 <i>Void 4 (Slab, Core wall,</i>						
	kolom)						
	<i>Slab</i>						
	Perancah / <i>Scaffolding</i>	480	m2	15	m2/orang/hari	20	2
	Gelar plywood	480	m2	25	m2/orang/hari	20	1
	Bekisting	626.84	m2	5	m2/orang/hari	70	2
	Pembesian	65230.084	kg	300	kg/orang/hari	60	4
	Pengecoran	421.143	m3	25	m3 / jam / alat	2	2
	Kolom + <i>Core wall</i>						

	Pembesian	12377.1945	kg	300	kg/orang/hari	40	2
	Bekisting	257.11	m2	2	m2/orang/hari	55	3
	Pengecoran	42.493	m3	25	m3 / jam / alat	2	1
10	Pekerjaan <i>ring slab</i> B3						
	Zona 1						
	Perancah / <i>Scaffolding</i>	574	m2	15	m2/orang/hari	20	2
	Gelar <i>plywood</i>	574	m2	25	m2/orang/hari	20	2
	Bekisting <i>slab</i>	626.84	m2	5	m2/orang/hari	70	2
	Pembesian <i>slab</i>	65230.084	kg	300	kg/orang/hari	55	4
	Pengecoran <i>slab</i>	421.143	m3	25	m3 / jam / alat	2	2
	Kolom B3 zona 1						
	Pembesian	1708.952	kg	300	kg/orang/hari	8	1
	Bekisting	49	m2	2	m2/orang/hari	25	1
	Pengecoran	8.6	m3	25	m3 / jam / alat	1	1
	Zona 2						
	Perancah / <i>Scaffolding</i>	574	m2	15	m2/orang/hari	20	2
	Gelar <i>plywood</i>	574	m2	25	m2/orang/hari	20	2
	Bekisting <i>slab</i>	626.84	m2	5	m2/orang/hari	70	2
	Pembesian <i>slab</i>	65230.084	kg	300	kg/orang/hari	55	4
	Pengecoran <i>slab</i>	421.143	m3	25	m3 / jam / alat	2	2
	Kolom B3 zona 2						
	Pembesian	4486.7141	kg	300	kg/orang/hari	15	1
	Bekisting	121.1	m2	2	m2/orang/hari	35	2
	Pengecoran	26.4	m3	25	m3 / jam / alat	1	1
	Zona 3						
	Perancah / <i>Scaffolding</i>	574	m2	15	m2/orang/hari	20	2
	Gelar <i>plywood</i>	574	m2	25	m2/orang/hari	20	2
	Bekisting <i>slab</i>	626.84	m2	5	m2/orang/hari	70	2
	Pembesian <i>slab</i>	65230.084	kg	300	kg/orang/hari	55	4
	Pengecoran <i>slab</i>	421.143	m3	25	m3 / jam / alat	2	2
	Kolom B3 zona 3						
	Pembesian	4088.3072	kg	300	kg/orang/hari	15	1
	Bekisting	118.3	m2	2	m2/orang/hari	35	2
	Pengecoran	25.76	m3	25	m3 / jam / alat	1	1
	Zona 4						
	Perancah / <i>Scaffolding</i>	574	m2	15	m2/orang/hari	20	2
	Gelar <i>plywood</i>	574	m2	25	m2/orang/hari	20	2
	Bekisting <i>slab</i>	626.84	m2	5	m2/orang/hari	70	2
	Pembesian <i>slab</i>	65230.084	kg	300	kg/orang/hari	55	4
	Pengecoran <i>slab</i>	421.143	m3	25	m3 / jam / alat	2	2
	Kolom B3 zona 4						
	Pembesian	5206.1916	kg	300	kg/orang/hari	20	1
	Bekisting	75.6	m2	2	m2/orang/hari	35	2
	Pengecoran	17.22	m3	25	m3 / jam / alat	1	1
	Zona 5						
	Perancah / <i>Scaffolding</i>	574	m2	15	m2/orang/hari	20	2
	Gelar <i>plywood</i>	574	m2	25	m2/orang/hari	20	2
	Bekisting <i>slab</i>	626.84	m2	5	m2/orang/hari	70	2
	Pembesian <i>slab</i>	65230.084	kg	300	kg/orang/hari	55	4
	Pengecoran <i>slab</i>	421.143	m3	25	m3 / jam / alat	2	2
	Kolom B3 zona 5						
	Pembesian	2617.7566	kg	300	kg/orang/hari	20	1

	Bekisting	67.2	m2	2	m2/orang/hari	30	2
	Pengecoran	14	m3	25	m3 / jam / alat	1	1
	Zona 6						
	Perancah / <i>Scaffolding</i>	574	m2	15	m2/orang/hari	20	2
	Gelar <i>plywood</i>	574	m2	25	m2/orang/hari	20	2
	Bekisting <i>slab</i>	626.84	m2	5	m2/orang/hari	70	2
	Pembesian <i>slab</i>	65230.084	kg	300	kg/orang/hari	55	4
	Pengecoran <i>slab</i>	421.143	m3	25	m3 / jam / alat	2	2
	Kolom B3 zona 6						
	Pembesian	1103.4122	kg	300	kg/orang/hari	20	1
	Bekisting	26.6	m2	2	m2/orang/hari	15	1
	Pengecoran	6.16	m3	25	m3 / jam / alat	1	1
	Zona 7						
	Perancah / <i>Scaffolding</i>	574	m2	15	m2/orang/hari	20	2
	Gelar <i>plywood</i>	574	m2	25	m2/orang/hari	20	2
	Bekisting <i>slab</i>	626.84	m2	5	m2/orang/hari	70	2
	Pembesian <i>slab</i>	65230.084	kg	300	kg/orang/hari	55	4
	Pengecoran <i>slab</i>	421.143	m3	25	m3 / jam / alat	2	2
	Kolom B3 zona 7						
	Pembesian	839.5904	kg	300	kg/orang/hari	20	1
	Bekisting	30.8	m2	2	m2/orang/hari	16	1
	Pengecoran	5.74	m3	25	m3 / jam / alat	1	1
11	Area B3 Void						
	B3 Void 1 (<i>Slab, Core wall, kolom</i>)						
	<i>Slab</i>						
	Perancah / <i>Scaffolding</i>	315	m2	15	m2/orang/hari	20	2
	Gelar <i>plywood</i>	315	m2	25	m2/orang/hari	20	1
	Bekisting	626.84	m2	5	m2/orang/hari	70	2
	Pembesian	65230.084	kg	300	kg/orang/hari	60	4
	Pengecoran	421.143	m3	25	m3 / jam / alat	2	2
	Kolom + <i>Core wall</i>						
	Pembesian	13736.3698	kg	300	kg/orang/hari	40	2
	Bekisting	203.7	m2	2	m2/orang/hari	55	2
	Pengecoran	38.941	m3	25	m3 / jam / alat	2	1
	B3 Void 2 (<i>Slab, Core wall, kolom</i>)						
	<i>Slab</i>						
	Perancah / <i>Scaffolding</i>	242	m2	15	m2/orang/hari	20	1
	Gelar <i>plywood</i>	242	m2	25	m2/orang/hari	20	1
	Bekisting	626.84	m2	5	m2/orang/hari	70	2
	Pembesian	65230.084	kg	300	kg/orang/hari	60	4
	Pengecoran	421.143	m3	25	m3 / jam / alat	2	2
	Kolom + <i>Core wall</i>						
	Pembesian	11833.6955	kg	300	kg/orang/hari	40	1
	Bekisting	144.055	m2	2	m2/orang/hari	55	2
	Pengecoran	28.412	m3	25	m3 / jam / alat	2	1
	B3 Void 3 (<i>Slab, Core wall, kolom</i>)						
	<i>Slab</i>						
	Perancah / <i>Scaffolding</i>	426	m2	15	m2/orang/hari	20	2
	Gelar <i>plywood</i>	426	m2	25	m2/orang/hari	20	1
	Bekisting	626.84	m2	5	m2/orang/hari	70	2

	Pembesian	65230.084	kg	300	kg/orang/hari	60	4
	Pengecoran	421.143	m3	25	m3 / jam / alat	2	2
	<i>Kolom + Core wall</i>						
	Pembesian	22300.6591	kg	300	kg/orang/hari	40	2
	Bekisting	324.275	m2	2	m2/orang/hari	55	3
	Pengecoran	61.22	m3	25	m3 / jam / alat	2	1
	<i>B3 Void 4 (Slab, Core wall, kolom)</i>						
	<i>Slab</i>						
	Perancah / <i>Scaffolding</i>	480	m2	15	m2/orang/hari	20	2
	Gelar plywood	480	m2	25	m2/orang/hari	20	1
	Bekisting	626.84	m2	5	m2/orang/hari	70	2
	Pembesian	65230.084	kg	300	kg/orang/hari	60	4
	Pengecoran	421.143	m3	25	m3 / jam / alat	2	2
	<i>Kolom + Core wall</i>						
	Pembesian	12377.1945	kg	300	kg/orang/hari	40	2
	Bekisting	257.11	m2	2	m2/orang/hari	55	3
	Pengecoran	42.493	m3	25	m3 / jam / alat	2	1
12	Pekerjaan ring slab B2						
	<i>Zona 1</i>						
	Perancah / <i>Scaffolding</i>	574	m2	15	m2/orang/hari	20	2
	Gelar plywood	574	m2	25	m2/orang/hari	20	2
	Bekisting slab	626.84	m2	5	m2/orang/hari	70	2
	Pembesian slab	65230.084	kg	300	kg/orang/hari	55	4
	Pengecoran slab	421.143	m3	25	m3 / jam / alat	2	2
	<i>Kolom B2 zona 1</i>						
	Pembesian	1708.952	kg	300	kg/orang/hari	8	1
	Bekisting	49	m2	2	m2/orang/hari	25	1
	Pengecoran	8.6	m3	25	m3 / jam / alat	1	1
	<i>Zona 2</i>						
	Perancah / <i>Scaffolding</i>	574	m2	15	m2/orang/hari	20	2
	Gelar plywood	574	m2	25	m2/orang/hari	20	2
	Bekisting slab	626.84	m2	5	m2/orang/hari	70	2
	Pembesian slab	65230.084	kg	300	kg/orang/hari	55	4
	Pengecoran slab	421.143	m3	25	m3 / jam / alat	2	2
	<i>Kolom B2 zona 2</i>						
	Pembesian	4486.7141	kg	300	kg/orang/hari	15	1
	Bekisting	121.1	m2	2	m2/orang/hari	35	2
	Pengecoran	26.4	m3	25	m3 / jam / alat	1	1
	<i>Zona 3</i>						
	Perancah / <i>Scaffolding</i>	574	m2	15	m2/orang/hari	20	2
	Gelar plywood	574	m2	25	m2/orang/hari	20	2
	Bekisting slab	626.84	m2	5	m2/orang/hari	70	2
	Pembesian slab	65230.084	kg	300	kg/orang/hari	55	4
	Pengecoran slab	421.143	m3	25	m3 / jam / alat	2	2
	<i>Kolom B2 zona 3</i>						
	Pembesian	4088.3072	kg	300	kg/orang/hari	15	1
	Bekisting	118.3	m2	2	m2/orang/hari	35	2
	Pengecoran	25.76	m3	25	m3 / jam / alat	1	1
	<i>Zona 4</i>						
	Perancah / <i>Scaffolding</i>	574	m2	15	m2/orang/hari	20	2
	Gelar plywood	574	m2	25	m2/orang/hari	20	2

	Bekisting <i>slab</i>	626.84	m2	5	m2/orang/hari	70	2
	Pembesian <i>slab</i>	65230.084	kg	300	kg/orang/hari	55	4
	Pengecoran <i>slab</i>	421.143	m3	25	m3 / jam / alat	2	2
	Kolom B2 zona 4						
	Pembesian	5206.1916	kg	300	kg/orang/hari	20	1
	Bekisting	75.6	m2	2	m2/orang/hari	35	2
	Pengecoran	17.22	m3	25	m3 / jam / alat	1	1
	Zona 5						
	Perancah / <i>Scaffolding</i>	574	m2	15	m2/orang/hari	20	2
	Gelar <i>plywood</i>	574	m2	25	m2/orang/hari	20	2
	Bekisting <i>slab</i>	626.84	m2	5	m2/orang/hari	70	2
	Pembesian <i>slab</i>	65230.084	kg	300	kg/orang/hari	55	4
	Pengecoran <i>slab</i>	421.143	m3	25	m3 / jam / alat	2	2
	Kolom B2 zona 5						
	Pembesian	2617.7566	kg	300	kg/orang/hari	20	1
	Bekisting	67.2	m2	2	m2/orang/hari	30	2
	Pengecoran	14	m3	25	m3 / jam / alat	1	1
	Zona 6						
	Perancah / <i>Scaffolding</i>	574	m2	15	m2/orang/hari	20	2
	Gelar <i>plywood</i>	574	m2	25	m2/orang/hari	20	2
	Bekisting <i>slab</i>	626.84	m2	5	m2/orang/hari	70	2
	Pembesian <i>slab</i>	65230.084	kg	300	kg/orang/hari	55	4
	Pengecoran <i>slab</i>	421.143	m3	25	m3 / jam / alat	2	2
	Kolom B2 zona 6						
	Pembesian	1103.4122	kg	300	kg/orang/hari	20	1
	Bekisting	26.6	m2	2	m2/orang/hari	15	1
	Pengecoran	6.16	m3	25	m3 / jam / alat	1	1
	Zona 7						
	Perancah / <i>Scaffolding</i>	574	m2	15	m2/orang/hari	20	2
	Gelar <i>plywood</i>	574	m2	25	m2/orang/hari	20	2
	Bekisting <i>slab</i>	626.84	m2	5	m2/orang/hari	70	2
	Pembesian <i>slab</i>	65230.084	kg	300	kg/orang/hari	55	4
	Pengecoran <i>slab</i>	421.143	m3	25	m3 / jam / alat	2	2
	Kolom B2 zona 7						
	Pembesian	839.5904	kg	300	kg/orang/hari	20	1
	Bekisting	30.8	m2	2	m2/orang/hari	16	1
	Pengecoran	5.74	m3	25	m3 / jam / alat	1	1
13	Area B2 Void						
	B2 Void 1 (<i>Slab, Core wall,</i>						
	kolom)						
	<i>Slab</i>						
	Perancah / <i>Scaffolding</i>	315	m2	15	m2/orang/hari	20	2
	Gelar <i>plywood</i>	315	m2	25	m2/orang/hari	20	1
	Bekisting	626.84	m2	5	m2/orang/hari	70	2
	Pembesian	65230.084	kg	300	kg/orang/hari	60	4
	Pengecoran	421.143	m3	25	m3 / jam / alat	2	2
	Kolom + <i>Core wall</i>						
	Pembesian	13736.3698	kg	300	kg/orang/hari	40	2
	Bekisting	203.7	m2	2	m2/orang/hari	55	2
	Pengecoran	38.941	m3	25	m3 / jam / alat	2	1
	B2 Void 2 (<i>Slab, Core wall,</i>						
	kolom)						
	<i>Slab</i>						

	Perancah / <i>Scaffolding</i>	242	m2	15	m2/orang/hari	20	1
	Gelar plywood	242	m2	25	m2/orang/hari	20	1
	Bekisting	626.84	m2	5	m2/orang/hari	70	2
	Pembesian	65230.084	kg	300	kg/orang/hari	60	4
	Pengecoran	421.143	m3	25	m3 / jam / alat	2	2
	<i>Kolom + Core wall</i>						
	Pembesian	11833.6955	kg	300	kg/orang/hari	40	1
	Bekisting	144.055	m2	2	m2/orang/hari	55	2
	Pengecoran	28.412	m3	25	m3 / jam / alat	2	1
	<i>B2 Void 3 (Slab, Core wall, kolom)</i>						
	<i>Slab</i>						
	Perancah / <i>Scaffolding</i>	426	m2	15	m2/orang/hari	20	2
	Gelar plywood	426	m2	25	m2/orang/hari	20	1
	Bekisting	626.84	m2	5	m2/orang/hari	70	2
	Pembesian	65230.084	kg	300	kg/orang/hari	60	4
	Pengecoran	421.143	m3	25	m3 / jam / alat	2	2
	<i>Kolom + Core wall</i>						
	Pembesian	22300.6591	kg	300	kg/orang/hari	40	2
	Bekisting	324.275	m2	2	m2/orang/hari	55	3
	Pengecoran	61.22	m3	25	m3 / jam / alat	2	1
	<i>B2 Void 4 (Slab, Core wall, kolom)</i>						
	<i>Slab</i>						
	Perancah / <i>Scaffolding</i>	480	m2	15	m2/orang/hari	20	2
	Gelar plywood	480	m2	25	m2/orang/hari	20	1
	Bekisting	626.84	m2	5	m2/orang/hari	70	2
	Pembesian	65230.084	kg	300	kg/orang/hari	60	4
	Pengecoran	421.143	m3	25	m3 / jam / alat	2	2
	<i>Kolom + Core wall</i>						
	Pembesian	12377.1945	kg	300	kg/orang/hari	40	2
	Bekisting	257.11	m2	2	m2/orang/hari	55	3
	Pengecoran	42.493	m3	25	m3 / jam / alat	2	1
14	Pekerjaan ring slab B1						
	<i>Zona 1</i>						
	Perancah / <i>Scaffolding</i>	574	m2	15	m2/orang/hari	20	2
	Gelar plywood	574	m2	25	m2/orang/hari	20	2
	Bekisting slab	626.84	m2	5	m2/orang/hari	70	2
	Pembesian slab	65230.084	kg	300	kg/orang/hari	55	4
	Pengecoran slab	421.143	m3	25	m3 / jam / alat	2	2
	<i>Kolom B1 zona 1</i>						
	Pembesian	2709.797	kg	300	kg/orang/hari	8	2
	Bekisting	12.84	m2	2	m2/orang/hari	25	1
	Pengecoran	86.9	m3	25	m3 / jam / alat	1	1
	<i>Zona 2</i>						
	Perancah / <i>Scaffolding</i>	574	m2	15	m2/orang/hari	20	2
	Gelar plywood	574	m2	25	m2/orang/hari	20	2
	Bekisting slab	626.84	m2	5	m2/orang/hari	70	2
	Pembesian slab	65230.084	kg	300	kg/orang/hari	55	4
	Pengecoran slab	421.143	m3	25	m3 / jam / alat	2	2
	<i>Kolom B1 zona 2</i>						
	Pembesian	5780.493	kg	300	kg/orang/hari	15	2
	Bekisting	148.03	m2	2	m2/orang/hari	65	2

Pengecoran	32.37	m3	25	m3 / jam / alat	1	1
Zona 3						
Perancah / <i>Scaffolding</i>	574	m2	15	m2/orang/hari	20	2
Gelar <i>plywood</i>	574	m2	25	m2/orang/hari	20	2
Bekisting <i>slab</i>	626.84	m2	5	m2/orang/hari	70	2
Pembesian <i>slab</i>	65230.084	kg	300	kg/orang/hari	55	4
Pengecoran <i>slab</i>	421.143	m3	25	m3 / jam / alat	2	2
Kolom B1 zona 3						
Pembesian	3615.94	kg	300	kg/orang/hari	15	1
Bekisting	96.09	m2	2	m2/orang/hari	60	1
Pengecoran	24.03	m3	25	m3 / jam / alat	1	1
Zona 4						
Perancah / <i>Scaffolding</i>	574	m2	15	m2/orang/hari	20	2
Gelar <i>plywood</i>	574	m2	25	m2/orang/hari	20	2
Bekisting <i>slab</i>	626.84	m2	5	m2/orang/hari	70	2
Pembesian <i>slab</i>	65230.084	kg	300	kg/orang/hari	55	4
Pengecoran <i>slab</i>	421.143	m3	25	m3 / jam / alat	2	2
Kolom B1 zona 4						
Pembesian	5699.773	kg	300	kg/orang/hari	20	1
Bekisting	84.24	m2	2	m2/orang/hari	40	2
Pengecoran	18.19	m3	25	m3 / jam / alat	1	1
Zona 5						
Perancah / <i>Scaffolding</i>	574	m2	15	m2/orang/hari	20	2
Gelar <i>plywood</i>	574	m2	25	m2/orang/hari	20	2
Bekisting <i>slab</i>	626.84	m2	5	m2/orang/hari	70	2
Pembesian <i>slab</i>	65230.084	kg	300	kg/orang/hari	55	4
Pengecoran <i>slab</i>	421.143	m3	25	m3 / jam / alat	2	2
Kolom B1 zona 5						
Pembesian	2437.17	kg	300	kg/orang/hari	20	1
Bekisting	63.20	m2	2	m2/orang/hari	30	2
Pengecoran	12.64	m3	25	m3 / jam / alat	1	1
Zona 6						
Perancah / <i>Scaffolding</i>	574	m2	15	m2/orang/hari	20	2
Gelar <i>plywood</i>	574	m2	25	m2/orang/hari	20	2
Bekisting <i>slab</i>	626.84	m2	5	m2/orang/hari	70	2
Pembesian <i>slab</i>	65230.084	kg	300	kg/orang/hari	55	4
Pengecoran <i>slab</i>	421.143	m3	25	m3 / jam / alat	2	2
Kolom B1 zona 6						
Pembesian	2531.965	kg	300	kg/orang/hari	20	1
Bekisting	80.86	m2	2	m2/orang/hari	15	3
Pengecoran	14.75	m3	25	m3 / jam / alat	1	1
Zona 7						
Perancah / <i>Scaffolding</i>	574	m2	15	m2/orang/hari	20	2
Gelar <i>plywood</i>	574	m2	25	m2/orang/hari	20	2
Bekisting <i>slab</i>	626.84	m2	5	m2/orang/hari	70	2
Pembesian <i>slab</i>	65230.084	kg	300	kg/orang/hari	55	4
Pengecoran <i>slab</i>	421.143	m3	25	m3 / jam / alat	2	2
Kolom B1 zona 7						
Pembesian	2883.223	kg	300	kg/orang/hari	20	1
Bekisting	82.16	m2	2	m2/orang/hari	16	3
Pengecoran	14.54	m3	25	m3 / jam / alat	1	1

B1 Void 1 (Slab, Core wall,
kolom)

Slab

Perancah / Scaffolding	315	m2	15	m2/orang/hari	20	2
Gelar plywood	315	m2	25	m2/orang/hari	20	1
Bekisting	626.84	m2	5	m2/orang/hari	70	2
Pembesian	65230.084	kg	300	kg/orang/hari	60	4
Pengecoran	421.143	m3	25	m3 / jam / alat	2	2

Kolom + Core wall

Pembesian	15578.506	kg	300	kg/orang/hari	40	2
Bekisting	229.89	m2	2	m2/orang/hari	60	2
Pengecoran	43.925	m3	25	m3 / jam / alat	2	1

B1 Void 2 (Slab, Core wall,
kolom)

Slab

Perancah / Scaffolding	242	m2	15	m2/orang/hari	20	1
Gelar plywood	242	m2	25	m2/orang/hari	20	1
Bekisting	626.84	m2	5	m2/orang/hari	70	2
Pembesian	65230.084	kg	300	kg/orang/hari	60	4
Pengecoran	421.143	m3	25	m3 / jam / alat	2	2

Kolom + Core wall

Pembesian	13444.842	kg	300	kg/orang/hari	40	2
Bekisting	162.543	m2	2	m2/orang/hari	65	2
Pengecoran	32.07	m3	25	m3 / jam / alat	2	1

B1 Void 3 (Slab, Core wall,
kolom)

Slab

Perancah / Scaffolding	426	m2	15	m2/orang/hari	20	2
Gelar plywood	426	m2	25	m2/orang/hari	20	1
Bekisting	626.84	m2	5	m2/orang/hari	70	2
Pembesian	65230.084	kg	300	kg/orang/hari	60	4
Pengecoran	421.143	m3	25	m3 / jam / alat	2	2

Kolom + Core wall

Pembesian	25287.734	kg	300	kg/orang/hari	45	2
Bekisting	365.97	m2	2	m2/orang/hari	85	3
Pengecoran	69.06	m3	25	m3 / jam / alat	2	1

B1 Void 4 (Slab, Core wall,
kolom)

Slab

Perancah / Scaffolding	480	m2	15	m2/orang/hari	20	2
Gelar plywood	480	m2	25	m2/orang/hari	20	1
Bekisting	626.84	m2	5	m2/orang/hari	70	2
Pembesian	65230.084	kg	300	kg/orang/hari	60	4
Pengecoran	421.143	m3	25	m3 / jam / alat	2	2

Kolom + Core wall

Pembesian	14050.139	kg	300	kg/orang/hari	40	2
Bekisting	290.167	m2	2	m2/orang/hari	85	2
Pengecoran	46.12	m3	25	m3 / jam / alat	2	1

ID	Task Mode	Task Name	Duration	Start	Finish	March 1		May 1		July 1		September 1		November 1		January 1		March 1		May 1		June 1				
						3/10	4/7	5/5	6/2	6/30	7/28	8/25	9/22	10/20	11/17	12/15	1/12	2/9	3/8	4/5	5/3	5/31	6/28			
1		Pekerjaan metode Top Down	294 days	May 13 '19	Jun 25 '20																					
2		Pekerjaan D-Wall	42 days	May 13 '19	Jul 9 '19																					
6		Pekerjaan bore pile	25 days	May 17 '19	Jun 20 '19																					
10		Pekerjaan tanam king post	2 days	Jun 19 '19	Jun 20 '19																					
11		Pekerjaan capping beam	5 days	Jul 10 '19	Jul 16 '19																					
15		Pekerjaan galian B1	16 days	Jul 12 '19	Aug 2 '19																					
24		PENGEORAN RING SLAB BASEMENT 1	23 days	Jul 18 '19	Aug 19 '19																					
53		Pekerjaan galian B2	33 days	Jul 17 '19	Aug 30 '19																					
62		PENGEORAN RING SLAB BASEMENT 2	23 days	Aug 14 '19	Sep 13 '19																					
91		Pekerjaan galian B3	45 days	Jul 26 '19	Sep 26 '19																					
100		PENGEORAN RING SLAB BASEMENT 3	23 days	Sep 10 '19	Oct 10 '19																					
129		Pekerjaan galian B4	58 days	Aug 6 '19	Oct 24 '19																					
138		PEKERJAAN MATT FOUNDATION	73 days	Oct 23 '19	Jan 31 '20																					
146		Pekerjaan Kolom B4 - B3	24 days	Jan 22 '20	Feb 24 '20																					
193		PENGEORAN VOID BASEMENT 3	34 days	Feb 20 '20	Apr 7 '20																					
210		PEKERJAAN KOLOM DARI BASEMENT 3 KE BASEMENT 2	57 days	Feb 5 '20	Apr 23 '20																					
257		PENGEORAN VOID BASEMENT 2	34 days	Mar 16 '20	Apr 30 '20																					
274		PEKERJAAN KOLOM DARI BASEMENT 2 KE BASEMENT 1	46 days	Mar 25 '20	May 27 '20																					
321		PENGEORAN VOID BASEMENT 1	27 days	May 5 '20	Jun 10 '20																					
338		PEKERJAAN KOLOM DARI BASEMENT 1 KE GF	26 days	May 21 '20	Jun 25 '20																					

Project: Top down
Date: May 15 '19

Task		External Tasks		Manual Task		Finish-only	
Split		External Milestone		Duration-only		Deadline	
Milestone		Inactive Task		Manual Summary Rollup		Progress	
Summary		Inactive Milestone		Manual Summary			
Project Summary		Inactive Summary		Start-only			

ID	Task Mode	Task Name	Duration	Start	Finish	January 1		April 1		July 1		October 1		January 1		April 1		July 1	
						W-15	W-9	W-3	W4	W10	W16	W22	W28	W34	W40	W46	W52	W58	W64
1		Pekerjaan metode Bottom Up	329 days	May 13 '19	Aug 13 '20														
2		Pekerjaan D-Wall	42 days	May 13 '19	Jul 9 '19														
6		Pekerjaan capping beam	5 days	Jul 9 '19	Jul 15 '19														
10		Pekerjaan galian tanah	22 days	Jul 18 '19	Aug 16 '19														
14		Pekerjaan ground anchor	19 days	Jul 26 '19	Aug 21 '19														
18		Pekerjaan bore pile	25 days	Aug 19 '19	Sep 20 '19														
22		PEKERJAAN MATT FOUNDATION	81 days	Sep 23 '19	Jan 13 '20														
30		Pekerjaan Kolom B4 - B3	24 days	Jan 15 '20	Feb 17 '20														
77		Pekerjaan ring slab B3	31 days	Feb 7 '20	Mar 20 '20														
124		Pekerjaan Kolom B3 - B2	26 days	Mar 12 '20	Apr 16 '20														
171		Pekerjaan ring slab B2	33 days	Apr 6 '20	May 20 '20														
218		Pekerjaan Kolom B2 - B1	28 days	May 8 '20	Jun 16 '20														
265		Pekerjaan ring slab B1	35 days	Jun 2 '20	Jul 20 '20														
312		Pekerjaan kolom B1 - GF	29 days	Jul 6 '20	Aug 13 '20														

Project: Top down
Date: May 15 '19

Task		External Tasks		Manual Task		Finish-only	
Split		External Milestone		Duration-only		Deadline	
Milestone		Inactive Task		Manual Summary Rollup		Progress	
Summary		Inactive Milestone		Manual Summary			
Project Summary		Inactive Summary		Start-only			