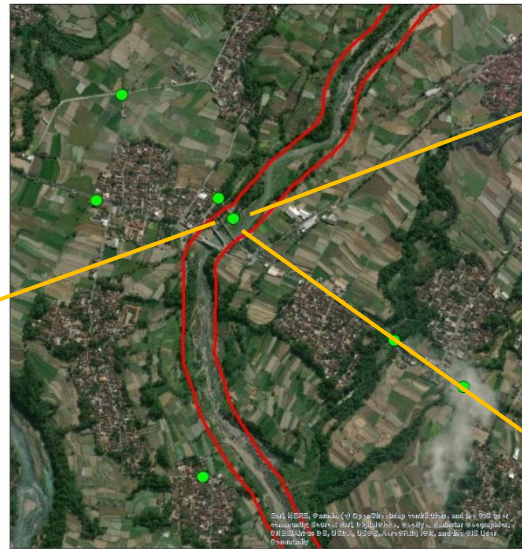


Lampiran 2. Hasil Tinjauan Lapangan Infrastruktur sungai



JB01 Jembatan Baja



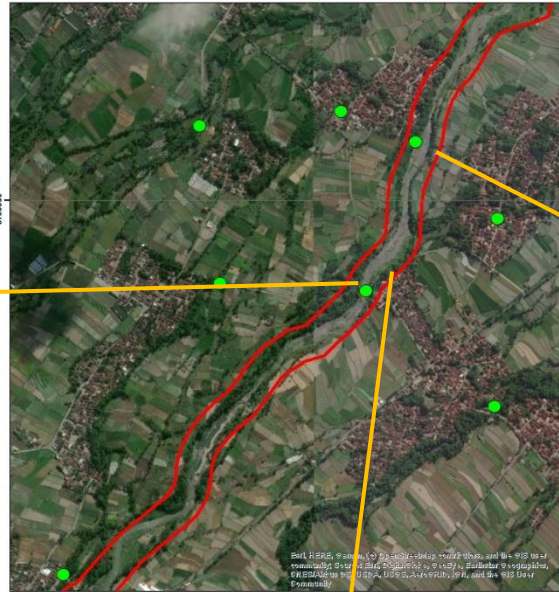
JB01 Material Dasar



Gerusan yang terjadi di Dinding Penahan Tanah



JB02 Jembatan Baja



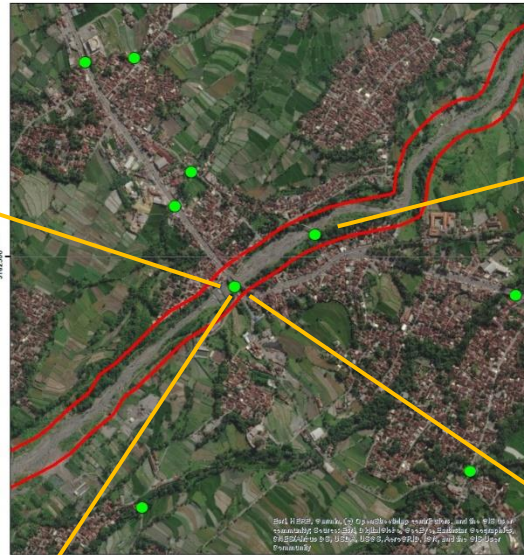
JB03 Jembatan Beton



Pembangunan Bendung Baru



JB04 Jembatan Beton



JB05 Jembatan Baja



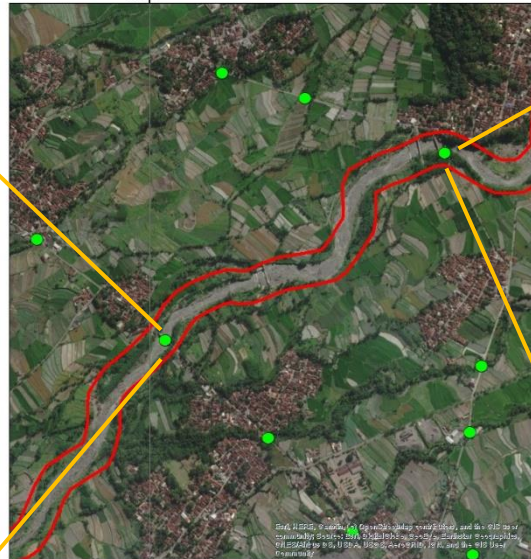
JB04 Permukiman di Daerah Sempadan Sungai



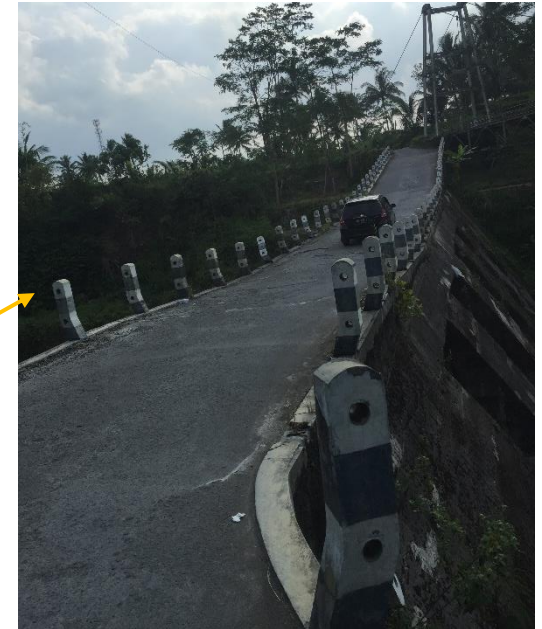
Renovasi Bendung



JB06 Jembatan Beton dan *check* Dam



JB06 Bendung yang berada di



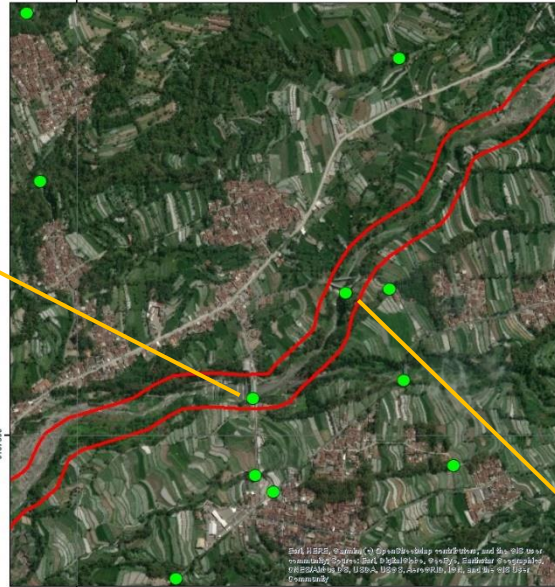
JB07 Jembatan Beton



*Check* Dam



JB08 Jembatan Beton



JB09 Jembatan Baja

