

## Lampiran

### A. Gambar



Tikus Wistar



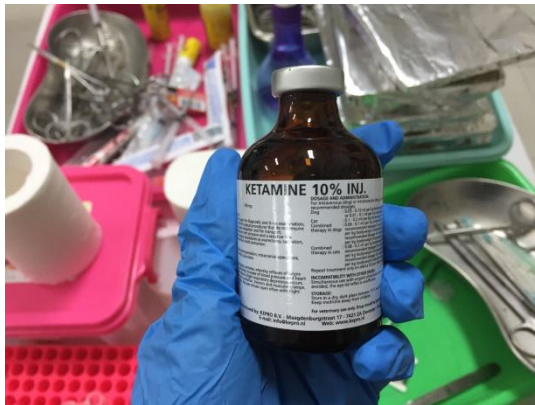
Alat-alat penelitian



Sprit injeksi



Sliding caliper



Ketamine HCL 10%



Bahan-bahan penelitian



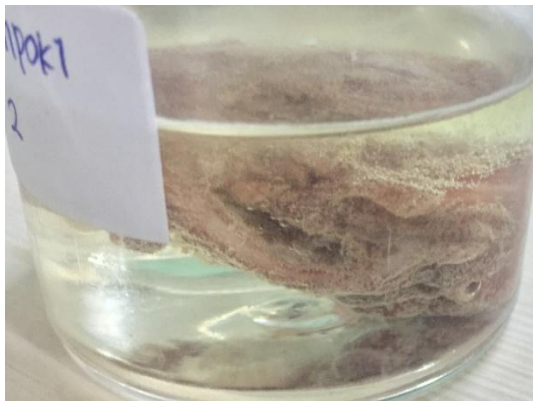
Pemberian nomor pada hewan coba



Anestesi melalui injeksi intramuskular dengan Ketamine HCL 10%



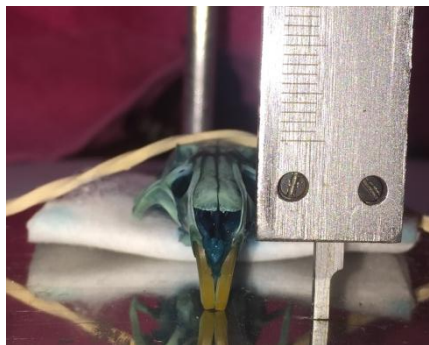
Ligasi gigi insisivus kiri maksila hewan coba



Sisa jaringan lunak dihilangkan dengan perendaman sodium hipoklorit 9%



Hemimaksila direndam dengan alkohol 90%



Penurunan tulang alveolar diukur dengan sliding caliper

**B. Tabel Statistik**

Kelompok Kontrol	Labial			Palatal		
	Mes	Mid	Dis	Mes	Mid	Dis
1	0.3	0.74	0.77	0.31	0.5	0.54
2	0.31	0.72	0.74	0.31	0.53	0.57
3	0.35	0.69	0.72	0.34	0.48	0.51
4	0.3	0.75	0.78	0.32	0.5	0.55
5	0.31	0.7	0.74	0.31	0.45	0.49
6	0.34	0.71	0.72	0.33	0.51	0.53

Kelompok 1	Labial			Palatal		
	Mes	Mid	Dis	Mes	Mid	Dis
1	0.33	0.73	0.75	0.32	0.48	0.52
2	0.36	0.76	0.78	0.35	0.54	0.58
3	0.3	0.71	0.74	0.31	0.51	0.54
4	0.34	0.74	0.76	0.32	0.49	0.53
5	0.28	0.73	0.75	0.3	0.5	0.54
6	0.32	0.7	0.73	0.33	0.47	0.49

Kelompok	Labial			Palatal		
	Mes	Mid	Dis	Mes	Mid	Dis
2	0.34	0.72	0.75	0.34	0.5	0.54
1	0.39	0.75	0.78	0.36	0.55	0.6
2	0.3	0.7	0.73	0.3	0.5	0.52
3	0.33	0.73	0.76	0.32	0.51	0.58
4	0.35	0.79	0.81	0.39	0.57	0.61
5	0.34	0.74	0.77	0.32	0.47	0.5

Kelompok	Labial			Palatal		
	Mes	Mid	Dis	Mes	Mid	Dis
3	0.33	0.76	0.83	0.35	0.53	0.54
1	0.38	0.78	0.84	0.38	0.55	0.6
2	0.41	0.74	0.83	0.36	0.5	0.56
3	0.39	0.7	0.78	0.36	0.56	0.6
4	0.4	0.76	0.8	0.36	0.53	0.58
5	0.42	0.75	0.8	0.37	0.56	0.6

Kelompok	Labial			Palatal		
	Mes	Mid	Dis	Mes	Mid	Dis
4	0.46	0.77	0.8	0.37	0.5	0.53
1	0.35	0.78	0.8	0.35	0.48	0.54
2	0.5	0.81	0.84	0.4	0.55	0.59
3	0.47	0.8	0.83	0.43	0.57	0.63
4	0.45	0.8	0.84	0.4	0.55	0.59

6	0.58	0.78	0.82	0.48	0.57	0.61
---	------	------	------	------	------	------

### Tests of Normality

	kelompok	Kolmogorov-Smirnov <sup>a</sup>			Shapiro-Wilk		
		Statistic	df	Sig.	Statistic	df	Sig.
Nilai	A	.343	6	.026	.801	6	.060
Resorpsi	B	.142	6	.200*	.988	6	.984
	C	.268	6	.200*	.860	6	.189
	D	.240	6	.200*	.884	6	.286

\*. This is a lower bound of the true significance.

a. Lilliefors Significance Correction

## Oneway

### Descriptives

Nilai Resorpsi

	N	Mean	Std. Deviation	Std. Error	95% Confidence Interval for Mean		Minimum	Maximum
					Lower Bound	Upper Bound		
A	6	.00450	.003271	.001335	.00107	.00793	.002	.010
B	6	.01750	.005010	.002045	.01224	.02276	.010	.025
C	6	.02883	.014986	.006118	.01311	.04456	.010	.047
D	6	.02833	.031678	.012932	-.00491	.06158	-.002	.080
Total	24	.01979	.019429	.003966	.01159	.02800	-.002	.080

## ANOVA

Nilai Resobsi

	Sum of Squares	df	Mean Square	F	Sig.
Between Groups	.002	3	.001	2.493	.089
Within Groups	.006	20	.000		
Total	.009	23			

## Post Hoc Tests

## Multiple Comparisons

Dependent Variable: Nilai Resorpsi

Tukey HSD

(I) kelompok	(J) kelompok	Mean Difference (I-J)	Std. Error	Sig.	95% Confidence Interval	
					Lower Bound	Upper Bound
A	B	-.013000	.010263	.594	-.04172	.01572
	C	-.024333	.010263	.115	-.05306	.00439
	D	-.023833	.010263	.126	-.05256	.00489
B	A	.013000	.010263	.594	-.01572	.04172
	C	-.011333	.010263	.691	-.04006	.01739
	D	-.010833	.010263	.719	-.03956	.01789
C	A	.024333	.010263	.115	-.00439	.05306
	B	.011333	.010263	.691	-.01739	.04006
	D	.000500	.010263	1.000	-.02822	.02922
D	A	.023833	.010263	.126	-.00489	.05256
	B	.010833	.010263	.719	-.01789	.03956
	C	-.000500	.010263	1.000	-.02922	.02822