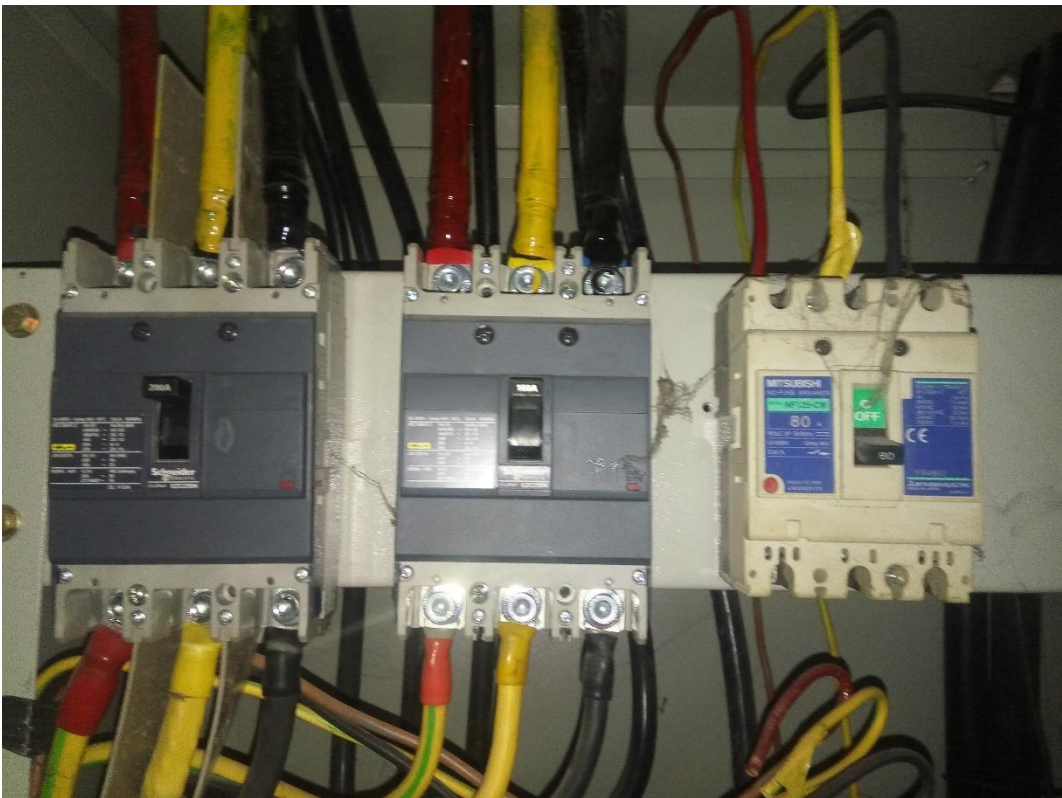
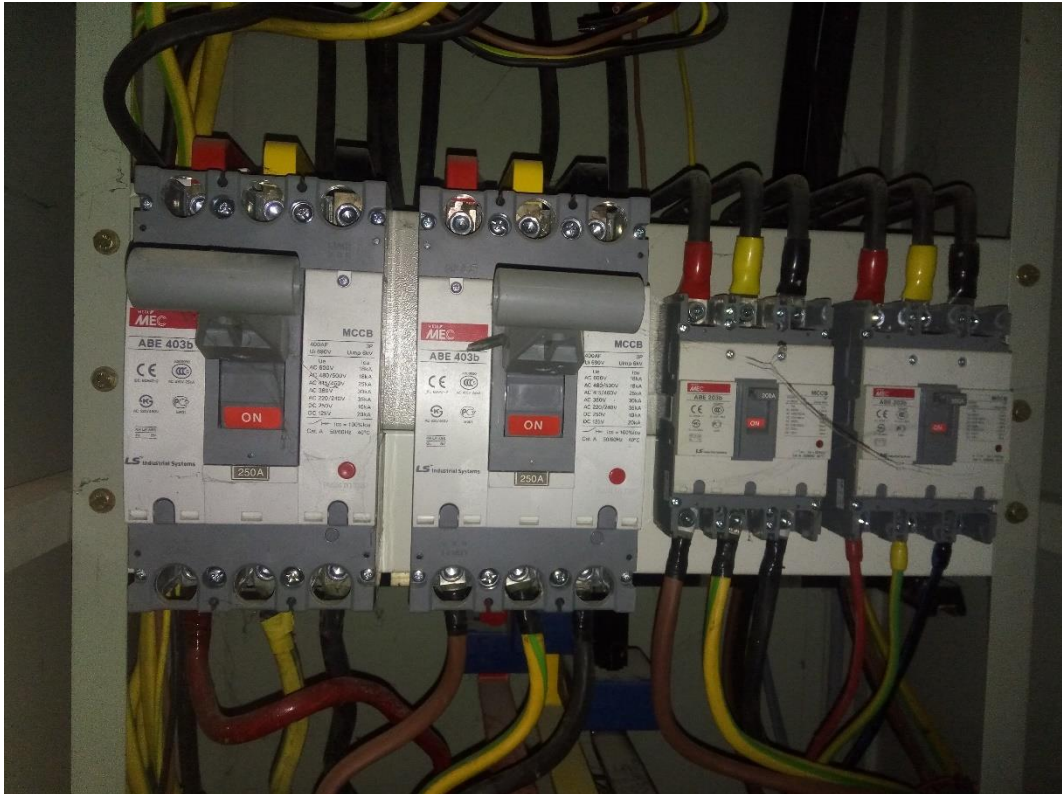


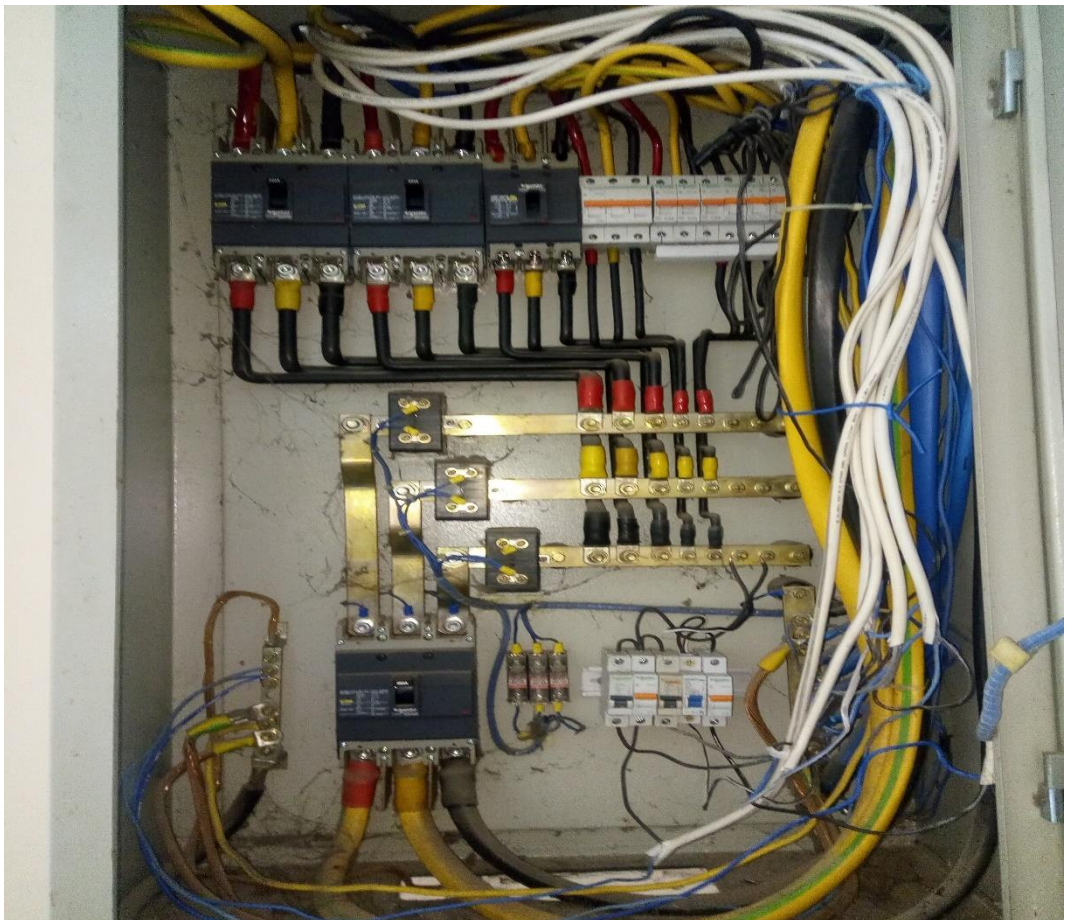
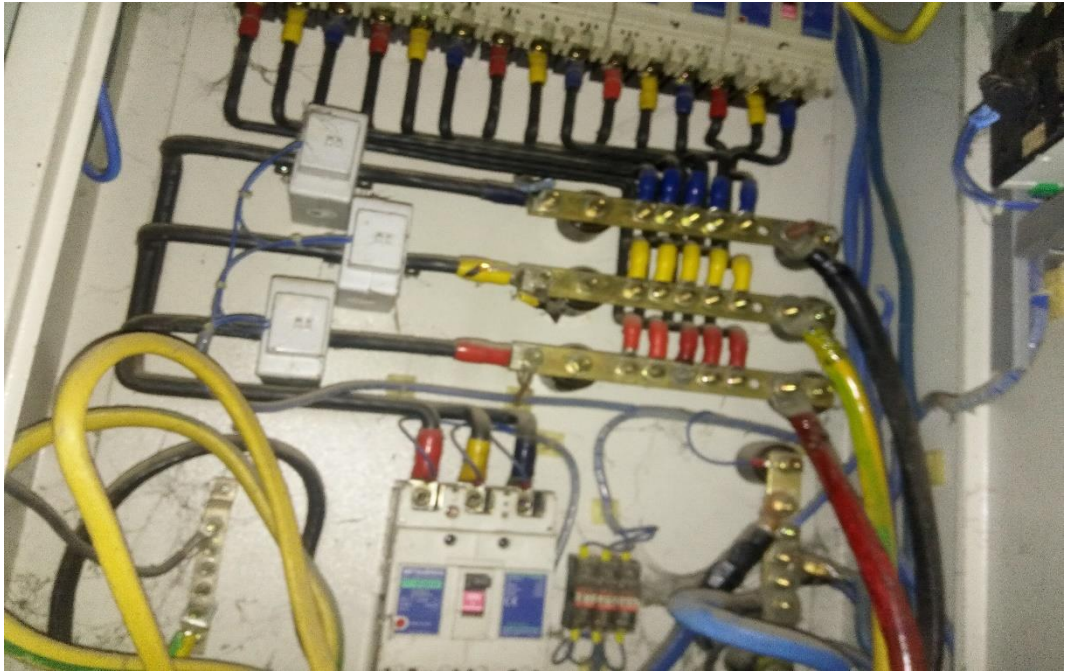
## DAFTAR LAMPIRAN

### Sistem kelistrikan pada Rumah Sakit Umum Daerah Muntilan









## Spesifikasi *Passive Filter*

### Product data sheet Characteristics

VW3A46105  
passive filter - 30 A - 400 V - 50 Hz - for variable  
speed drive



#### Main

Product or component type	Passive filter
Product specific application	Reduction of current harmonics

#### Complementary

Range compatibility	Altivar 61 Altivar 71 Altivar Process ATV600 Altivar Process ATV900
[Us] rated supply voltage	400 V (+/- 10 %)
Power supply frequency	50 Hz (tolerance: +/- 2 %)
Quantity per drive	1 filter per drive for variable speed drive ATV61W motor: 15 kW / 20 hp 1 filter per drive for variable speed drive ATV61H motor: 15 kW / 20 hp 1 filter per drive for variable speed drive ATV71H motor: 15 kW / 20 hp 1 filter per drive for variable speed drive ATV71W motor: 15 kW / 20 hp 1 filter per drive for variable speed drive ATV650 wall mount, motor: 15 kW / 20 hp 1 filter per drive for variable speed drive ATV630 wall mount, motor: 15 kW / 20 hp 1 filter per drive for variable speed drive ATV950 wall mount, motor: 15 kW / 20 hp 1 filter per drive for variable speed drive ATV930 wall mount, motor: 15 kW / 20 hp
[In] rated current	29 A for input 30 A for output
Network number of phases	3 phases
THDI	10 % for variable speed drive ATV61W motor: 15 kW / 20 hp 16 % for variable speed drive ATV61H motor: 15 kW / 20 hp 16 % for variable speed drive ATV71H motor: 15 kW / 20 hp 16 % for variable speed drive ATV71W motor: 15 kW / 20 hp 10 % for variable speed drive ATV650 motor: 15 kW / 20 hp 10 % for variable speed drive ATV630 motor: 15 kW / 20 hp 10 % for variable speed drive ATV950 motor: 15 kW / 20 hp 10 % for variable speed drive ATV930 motor: 15 kW / 20 hp
Max current	1.5 x nominal current (duration = 60 s)
Efficiency	<= 98 %
Thermal losses	224 W
Cos phi	1 at 150 % of line current 0.85 at 75 % of line current 0.99 at 100 % of line current
Electrical connection	X1-1...X2-3 terminal, connection capacity: 0.5...10 mm <sup>2</sup> A, B terminal, connection capacity: 2.5 mm <sup>2</sup>
Electrical insulation class	Class F

Jun 13, 2019

Libby On Schneider

1

Disclaimer: This documentation is not intended as a substitute for and is not to be used for determining suitability or reliability of these products for specific user applications.

Product weight	25 kg
----------------	-------

#### Environment

IP degree of protection	IP55 (enclosure mounting) IP20
Vibration resistance	2 mm peak to peak (f = 5...13.2 Hz) conforming to EN 60068-2-6 0.7 gn (f = 13.2...150 Hz) conforming to EN 60068-2-6
Relative humidity	5...85 % without condensation
Ambient air temperature for operation	> 45...60 °C with current derating 3 % per °C 5...45 °C without current derating
Ambient air temperature for storage	> -25...55 °C storage in original packaging > -25...65 °C during transport
Operating altitude	≤ 1000 m without current derating > 1000...4000 m with current derating 5 % per 1000 m
Standards	EN/IEC 61000-3-2 EN/IEC 61000-3-12 EN/IEC 61000-3-4 EN/IEC 61000-2-2 EN/IEC 61000-2-4 G5/4 engineering recommendation

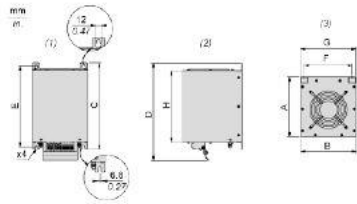
#### Offer Sustainability

RoHS (date code: YYWW)	Compliant  <a href="#">Schneider Electric declaration of conformity</a>
------------------------	---

Product data sheet  
Dimensions Drawings

VW3A46105

Dimensions



- (1) Front view
- (2) Right side view
- (3) Top view

Dimensions in mm

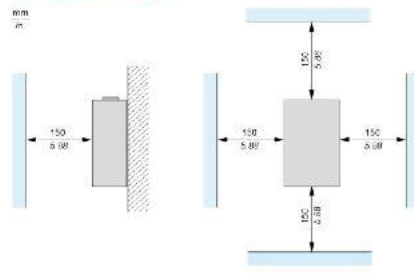
A	B	C	D	E	F	G	H
247.5	232	399.55	436.11	380	205	230	350

Dimensions in in.

A	B	C	D	E	F	G	H
9.74	9.13	15.73	17.17	14.96	8.07	9.06	13.78

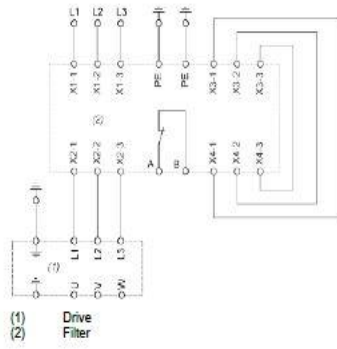
Mounting Recommendations

Vertical Mounting Only





Recommended Schema



## Harga Passive Filter

**VW3A46127 - PASSIVE FLTR, VAR SPEED DRIVE, 400V/60A**

**Manufacturer:** SCHNEIDER ELECTRIC  
**Manufacturer Part No:** VW3A46127  
**Order Code:** 3110779  
**Product Range:** Altivar Series  
**Technical Datasheet:** VW3A46127 Datasheet

**Available to supplier Lead Time**  
 £2,330.00  
 Price for: Each  
 Multiple: 1 Minimum: 1

Quantity	Price
1+	£2,330.00

**Product Information**

- Accessory Type:** Passive Filter
- For Use With:** Schneider Electric Altivar 61, 71, Process ATV600 & Process ATV900 Series Variable Speed Drives
- Product Range:** Altivar Series

## Aplikasi Power View Quality Analyzer

