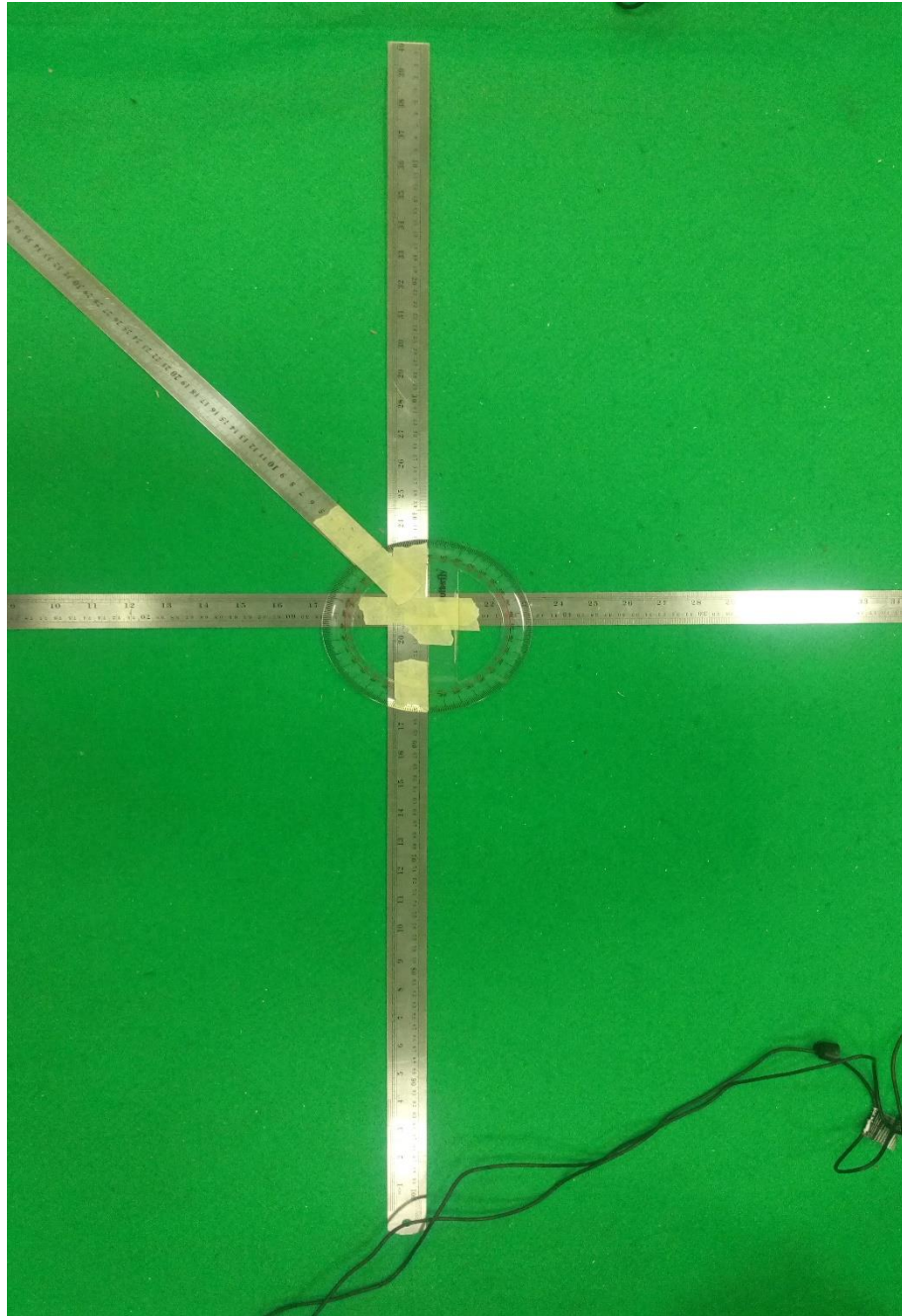


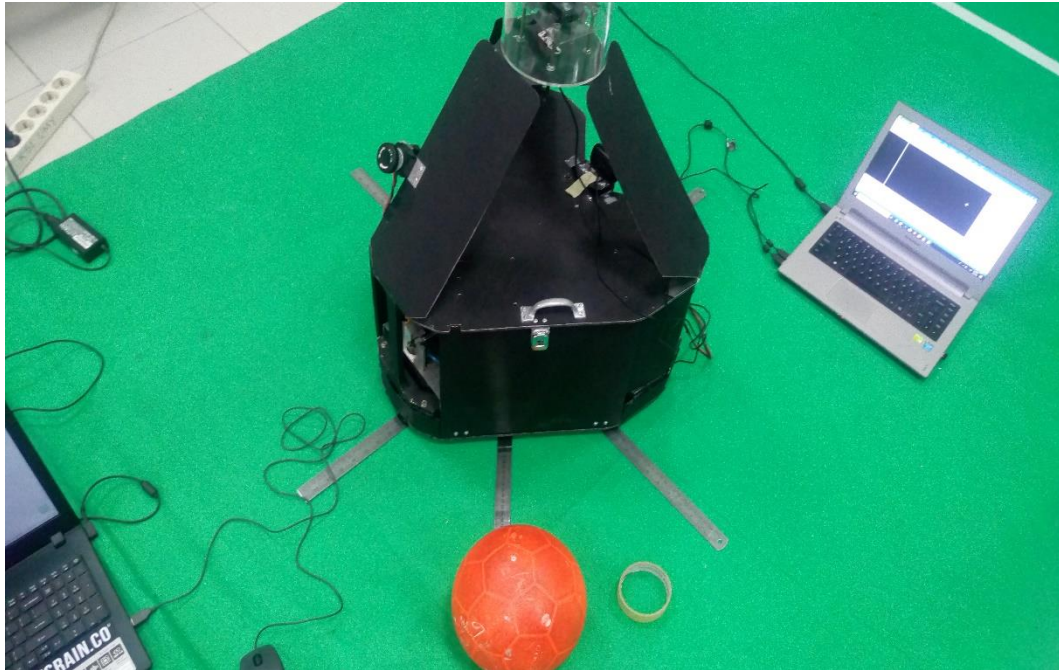
LAMPIRAN



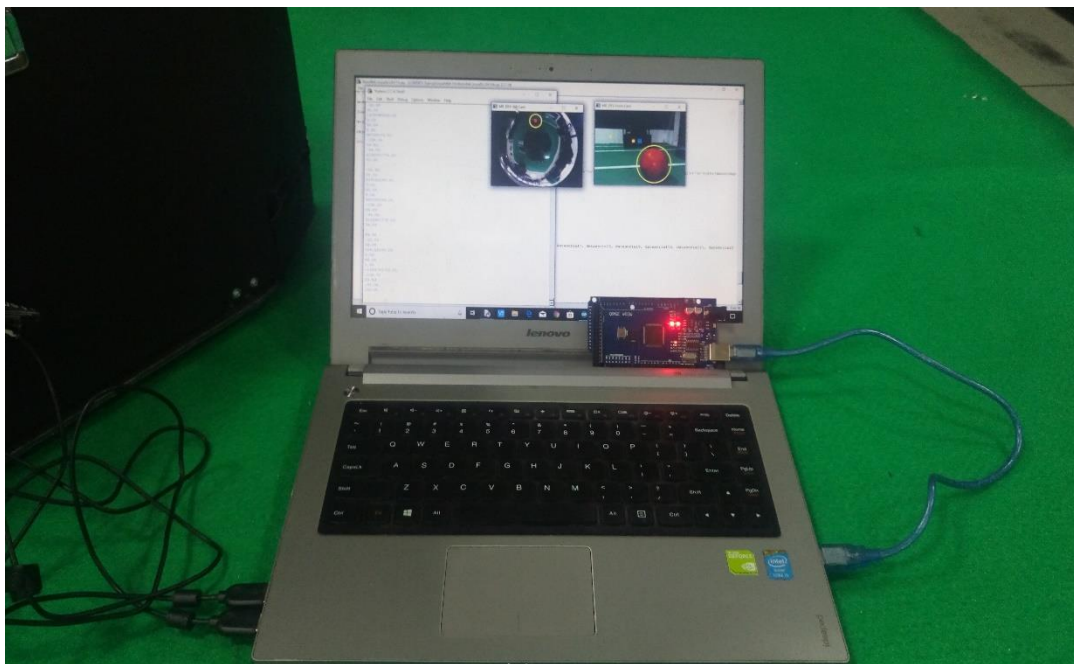
Gambar 7.1 Lux Meter



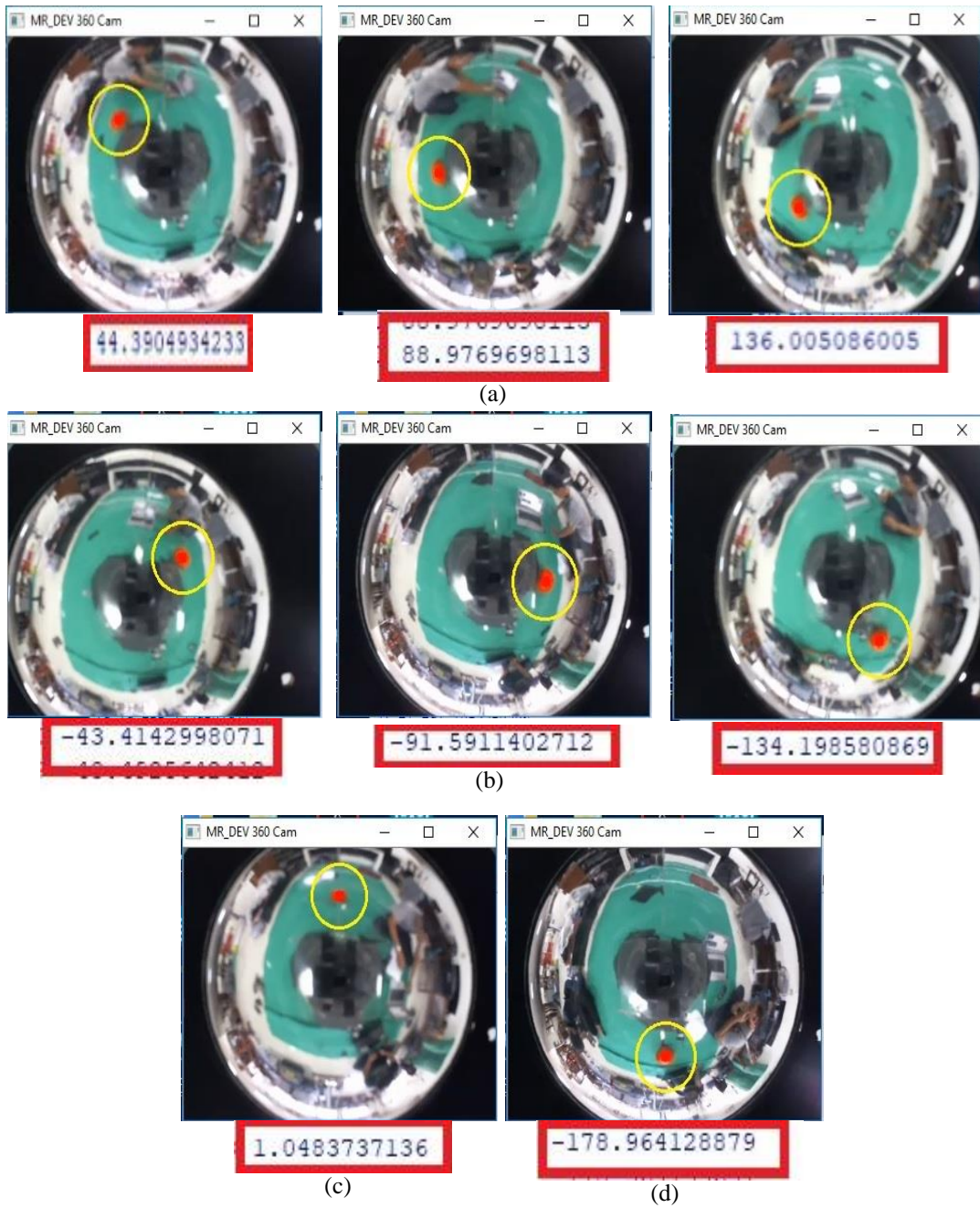
Gambar 7.2 Busur Derajat yang Diperluas Jangkauannya dengan Penggaris Besi sebagai Perangkat Pengukuran dalam Pengujian Pembacaan Sudut



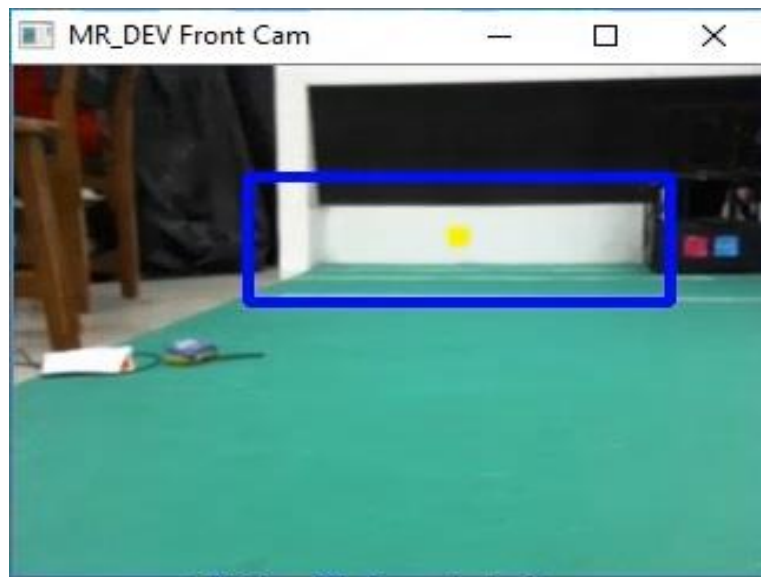
Gambar 7.3 Contoh Pengujian Pembacaan Sudut pada Kamera



Gambar 7.4 Pengujian Pengiriman Data ke *Microcontroller*



Gambar 7.5 Hasil Pembacaan Sudut pada Kamera Omnivision: (a)Sisi Kanan ,
 (b)Sisi Kiri, (c)Sisi Depan , (d)Sisi Belakang Robot



Gambar 7.6 Tampilan Titik Tembak pada Gawang Lawan ketika Kiper di Sisi Kanan Gawang



Gambar 7.7 Tampilan Titik Tembak pada Gawang Lawan ketika Kiper di Sisi Kiri Gawang



Logitech®

HD Webcam C525

For portable HD video calling and recording - with autofocus

- HD 720p video calling and recording plus autofocus - on most major IM applications and Logitech Vid™ HD
- 1-click Facebook™, Twitter™ and YouTube™ HD uploading
- Fold-and-go plus swivel design
- 8-megapixel photos (software enhanced)
- Logitech® Fluid Crystal™ Technology

The Logitech® HD Webcam C525. For portable HD video calling and recording - with autofocus. Stay close to the people you care about in smooth HD 720p with autofocus - on your favourite IM or Logitech Vid™ HD - thanks to Logitech More HD. Upload your latest clip to Facebook™, Twitter™ or YouTube™ with just one click. Logitech Video Effects™ and the included MAGIX™ photo and video editor help you look good. The fold-and-go plus swivel design makes it easy to take it with you. You can send your friends and family a dazzling BMP pic. And it includes Logitech Fluid Crystal™ Technology - delivering smoother video, sharper pictures, richer colours and clearer sound in real-world conditions (requires installation of included software).



Logitech Vid™ HD



fluid crystal
technology

Logitech®

Logitech® HD Webcam C525



Package specifications

	Primary pack	Master shipper carton
Part # WER	960-000721	n/a
Bar Code	5099206027121 (EAN-13)	50992060271214 (SCC-14)
Part # Central	960-000722	n/a
Bar Code	5099206027138 (EAN-13)	50992060271313 (SCC-14)
Part # EER	960-000723	n/a
Bar Code	5099206027145 (EAN-13)	50992060271412 (SCC-14)
Weight	226.8 g	2.147 kg
Length	20.95 cm	31.50 cm
Width	7.62 cm	31.60 cm
Height / depth	15.24 cm	22.40 cm
Volume	2.433 dm ³	0.02230 m ³
1 primary pack	1	n/a
1 intermediate pack	0	n/a
1 master shipper carton	8	1
1 pallet EURO	432	54
1 container 20ft	10080	1260
1 container 40ft	21280	2660
1 container 40ft HQ	23408	2926

Technical Specifications

- HD video calling (1280 x 720 pixels) with recommended system
- HD video capture: up to 1280 x 720 pixels
- Logitech Fluid Crystal™ Technology
- Logitech More HD technology
- Autofocus
- Photos: up to 8 megapixels (software enhanced)
- Built-in microphone with Logitech RightSound™ technology
- Hi-Speed USB 2.0 certified (recommended)
- Universal clip fits laptops, LCD or CRT monitors

Logitech webcam software:

- Logitech Vid™ HD

- Logitech RightLight™ 2 technology
- Video and photo capture
- MAGIX™ photo and video editing software
- 1-click Facebook™, Twitter™ and YouTube™ HD upload (registration required)
- Logitech Video Effects™: fun filters, avatars, face accessories, video masks and mask maker*

Works with most instant messaging applications

* Intel® Pentium® 4 (2.8 GHz) recommended.



©2011 Logitech. Logitech, the Logitech logo and other Logitech marks are owned by Logitech and may be registered. All other trademarks are the property of their respective owners.

Package Contents

- Webcam with 1.5-m (5-foot) cable
- Logitech webcam software with Logitech Vid™ HD
- User documentation

2-year manufacturer's guarantee with full product support

System Requirements

- Windows® XP (SP2 or higher), Windows Vista® or Windows® 7 (32-bit or 64-bit)

Basic requirements:

- 1 GHz
- 512 MB RAM
- 200 MB hard drive space
- Internet connection
- USB 1.1 port (2.0 recommended)

For HD 720p video calling on Logitech Vid™ HD and HD video sharing on Facebook™/Twitter™/YouTube™:

- 2.4 GHz Intel® Core™2 Duo
- 2 GB RAM
- 200 MB hard drive space
- USB 2.0 port
- 1 Mbps upload speed or higher
- 1280 x 720 screen resolution

For other video-calling clients, please check the recommended requirements.

