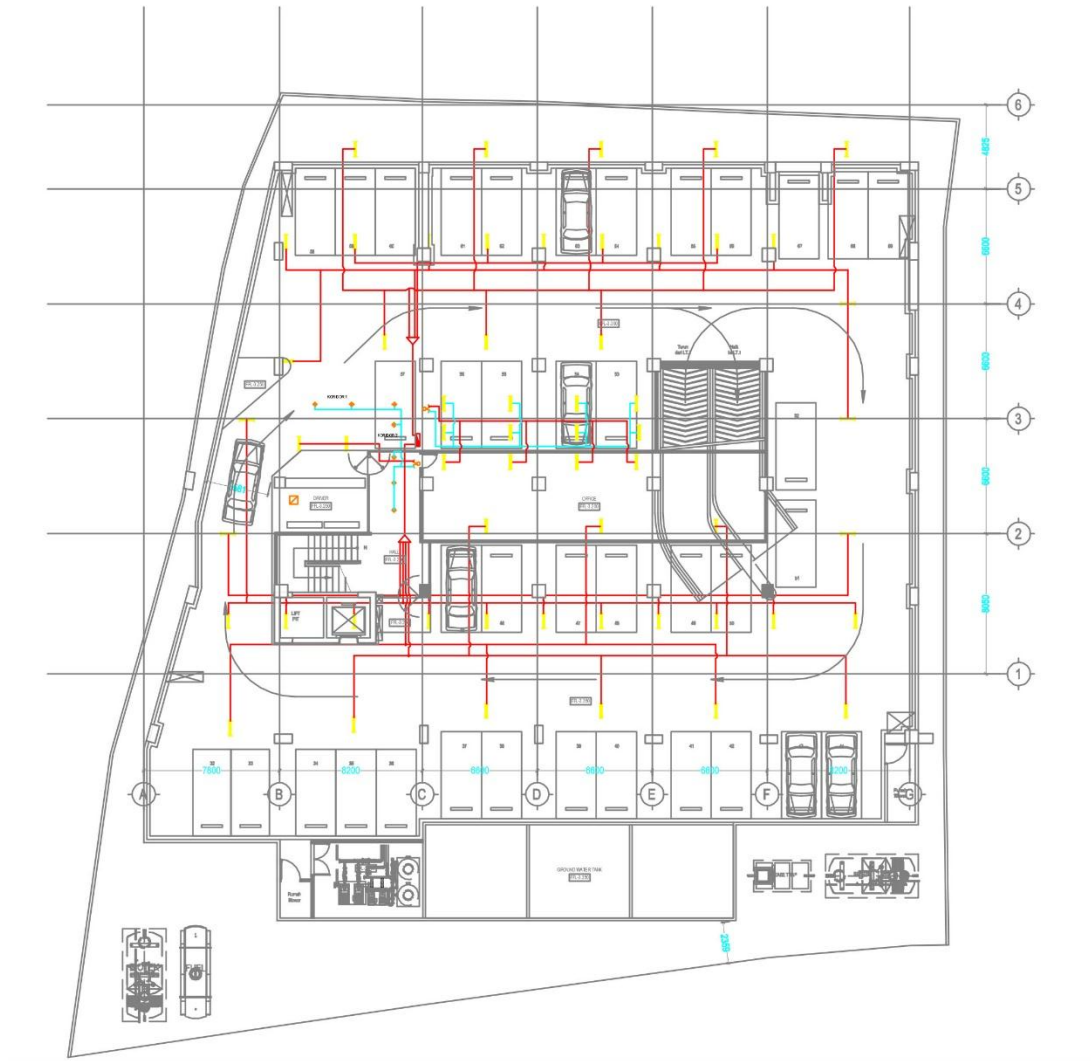


Lampiran

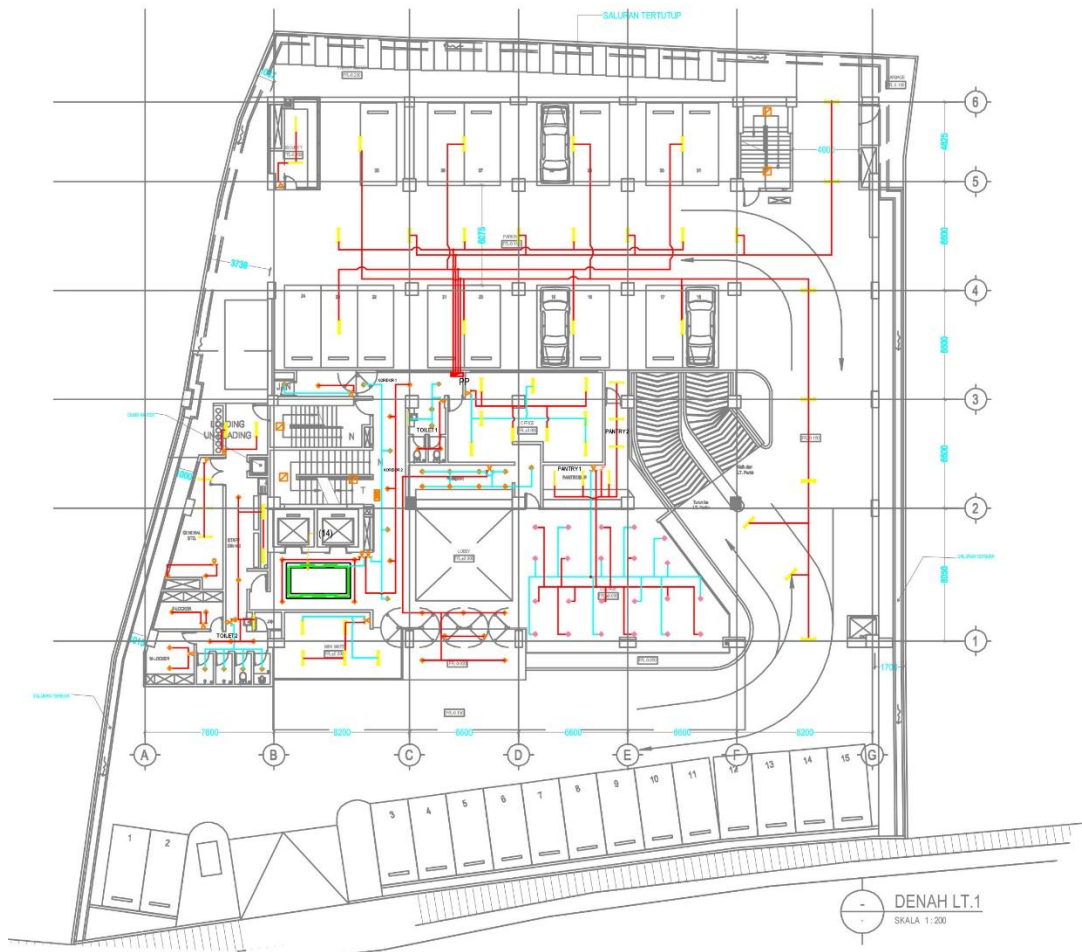
Lampiran 1 denah hasil rancangan

	: LAMPU SOROT PLANTES 38 WATT
	: LAMPU DINDING TANGGA 18 WATT
	: CORELINE LED BATTEN 2X19 WATT
	: DOWN LIGHT LED 15W
	: DOWN LIGHT LED 18W
	: DOWN LIGHT LED 11W
	: HELIPORT PRIMETER LED 5 WATT
	: MASTER LED TUBE T5 8 WATT
	: MASTER LED TUBE T8 12 WATT
	: MASTER LED TUBE T8 14 WATT
	: SAKLAR TUNGGAL
	: SAKLAR SERI
	: LAMPU BARET PL 13 WATT
	: LAMPU EXIT TL 2x10 WATT
	: BOX PANEL

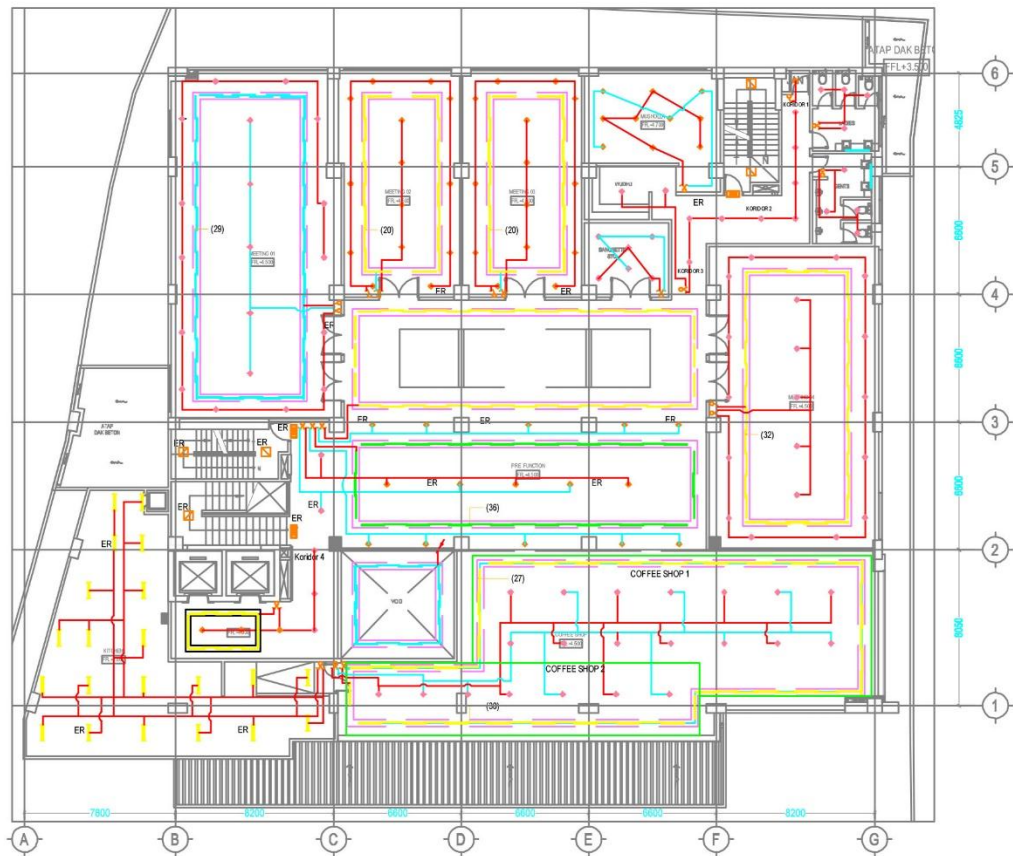
Gambar 1 keterangan lambang lampu



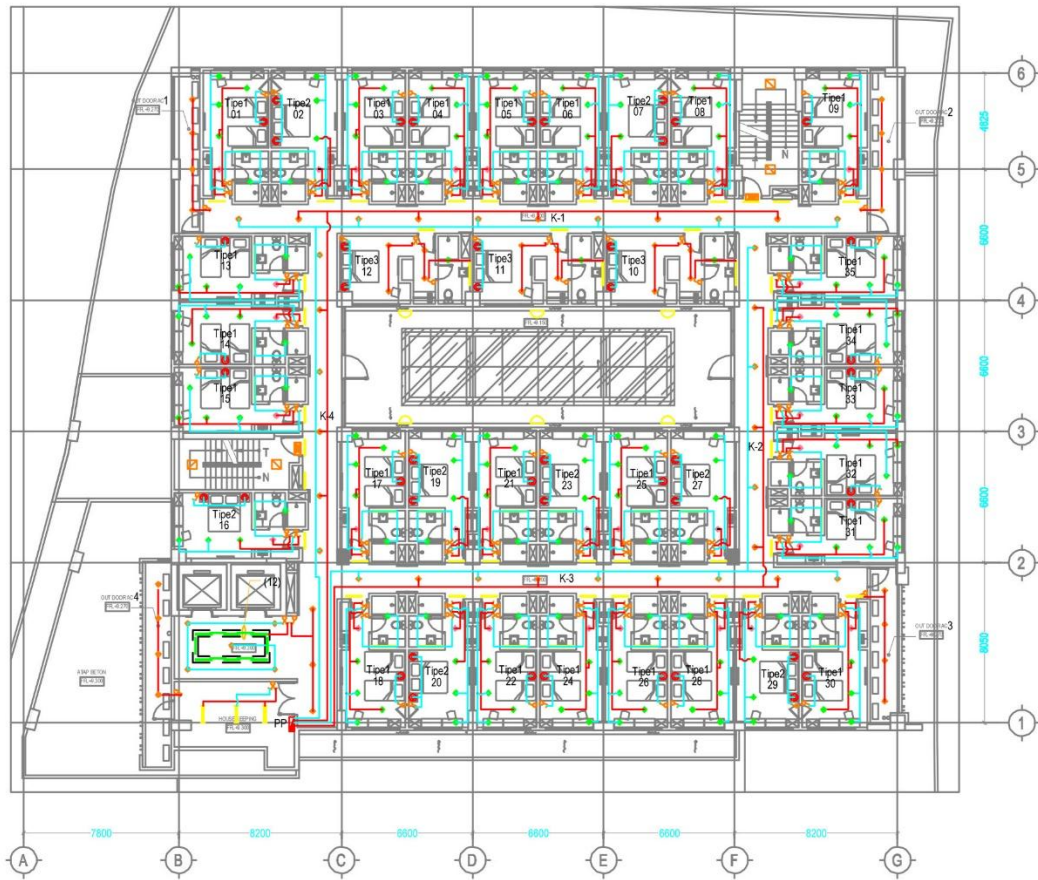
Gambar 2 hasil perancangan lampu lantai basement



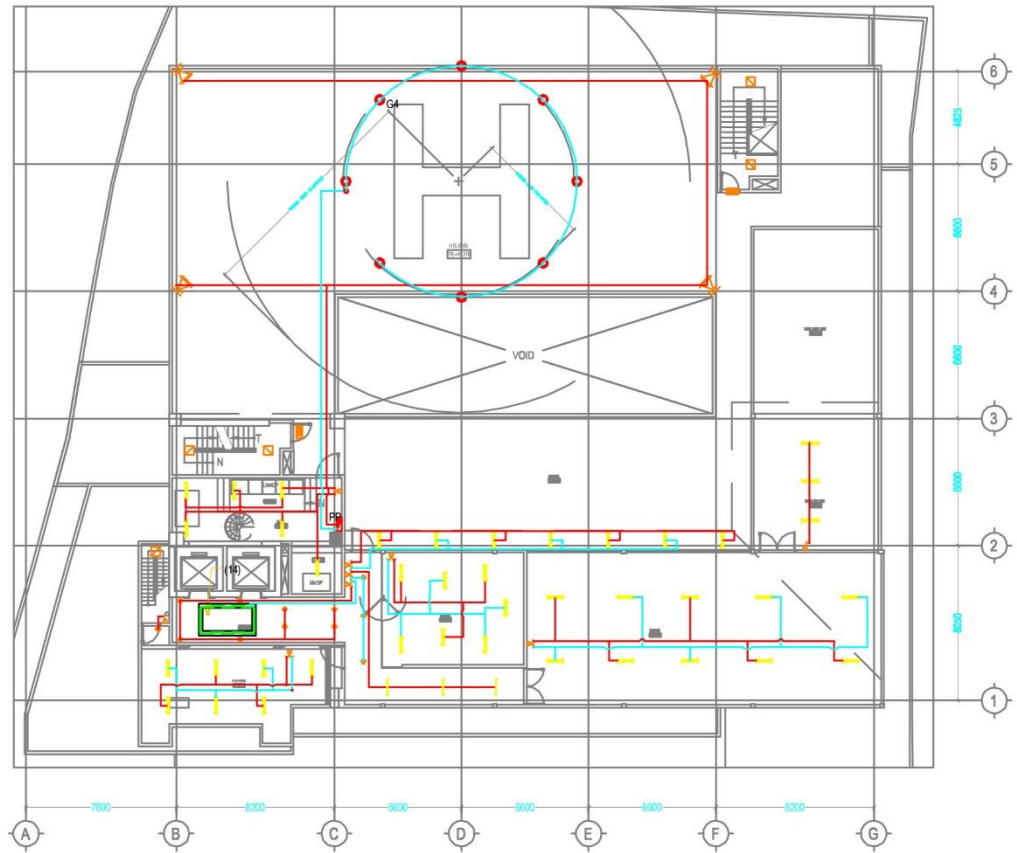
Gambar 3 hasil perancangan lampu lantai 1



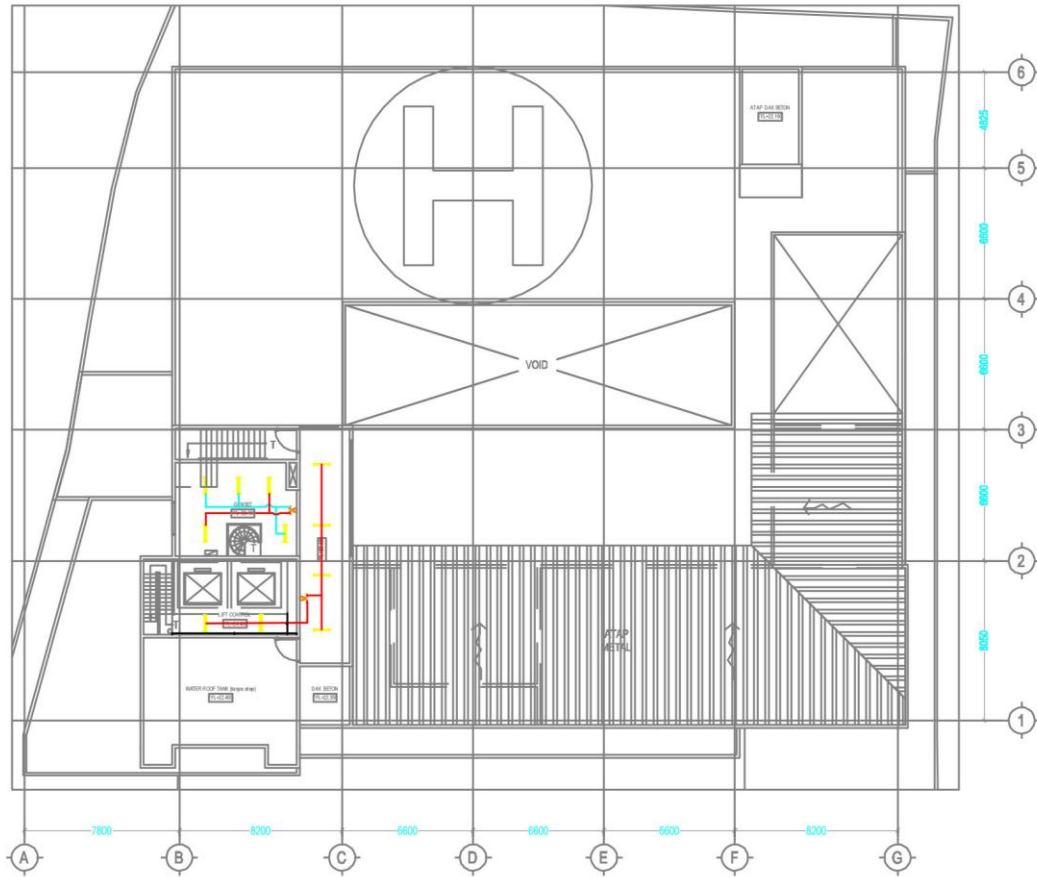
Gambar 4 hasil perancangan lampu lantai 2



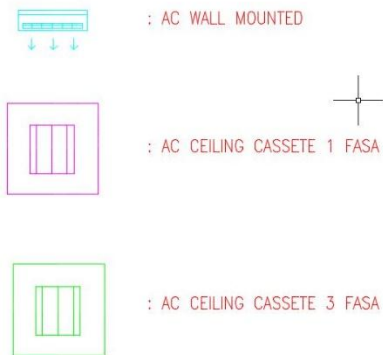
Gambar 5 hasil perancangan lampu lantai 3,4,&5



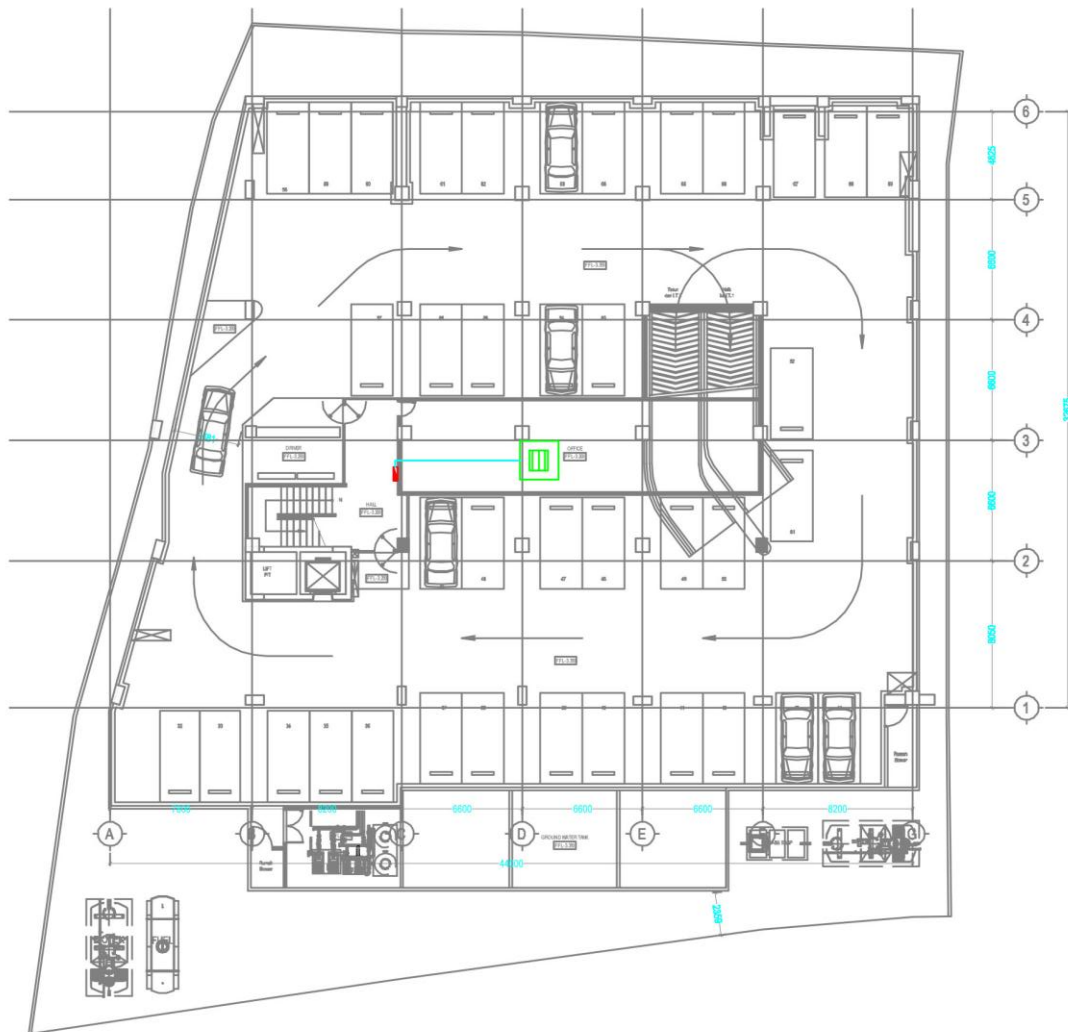
Gambar 6 hasil perancangan lampu lantai 6



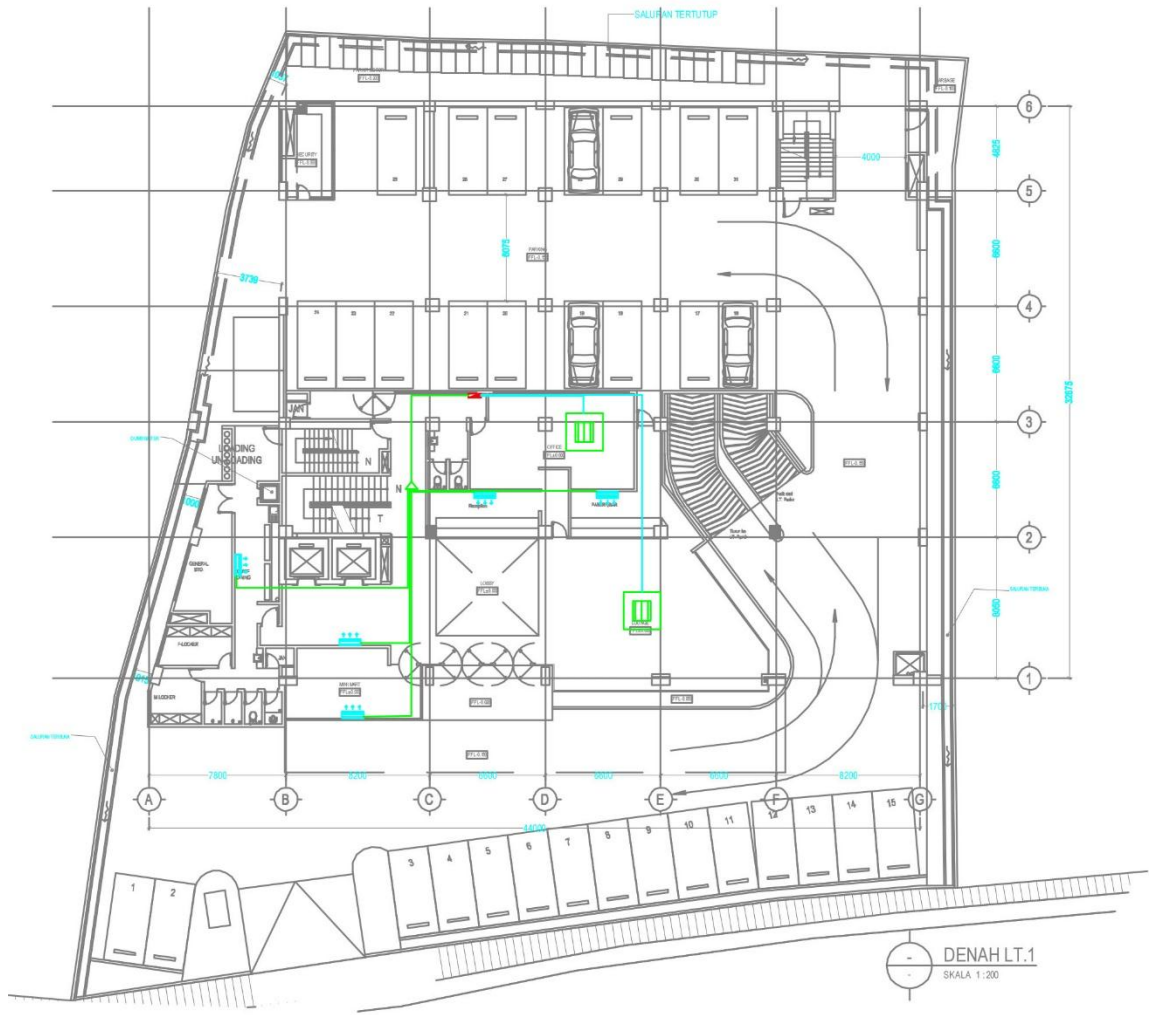
Gambar 7 hasil perancangan lampu lantai atap



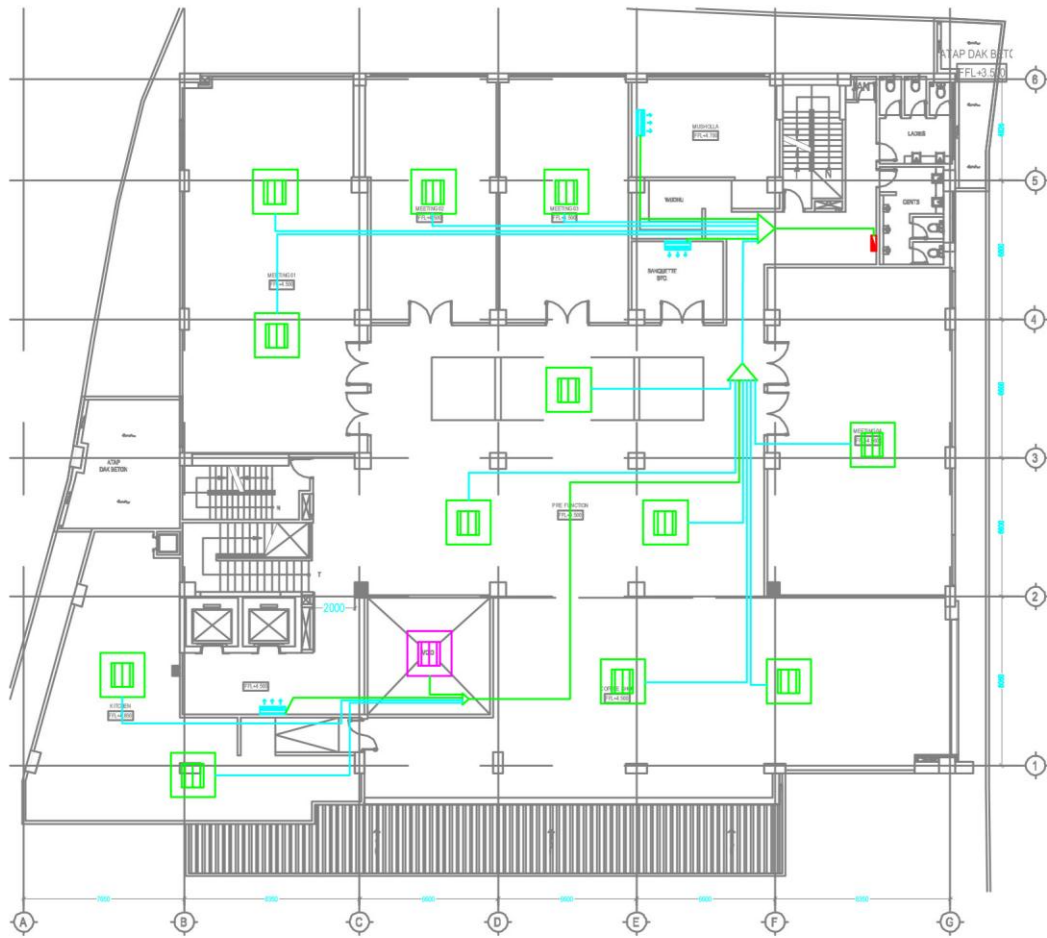
Gambar 8 keterangan lambang AC yang digunakan



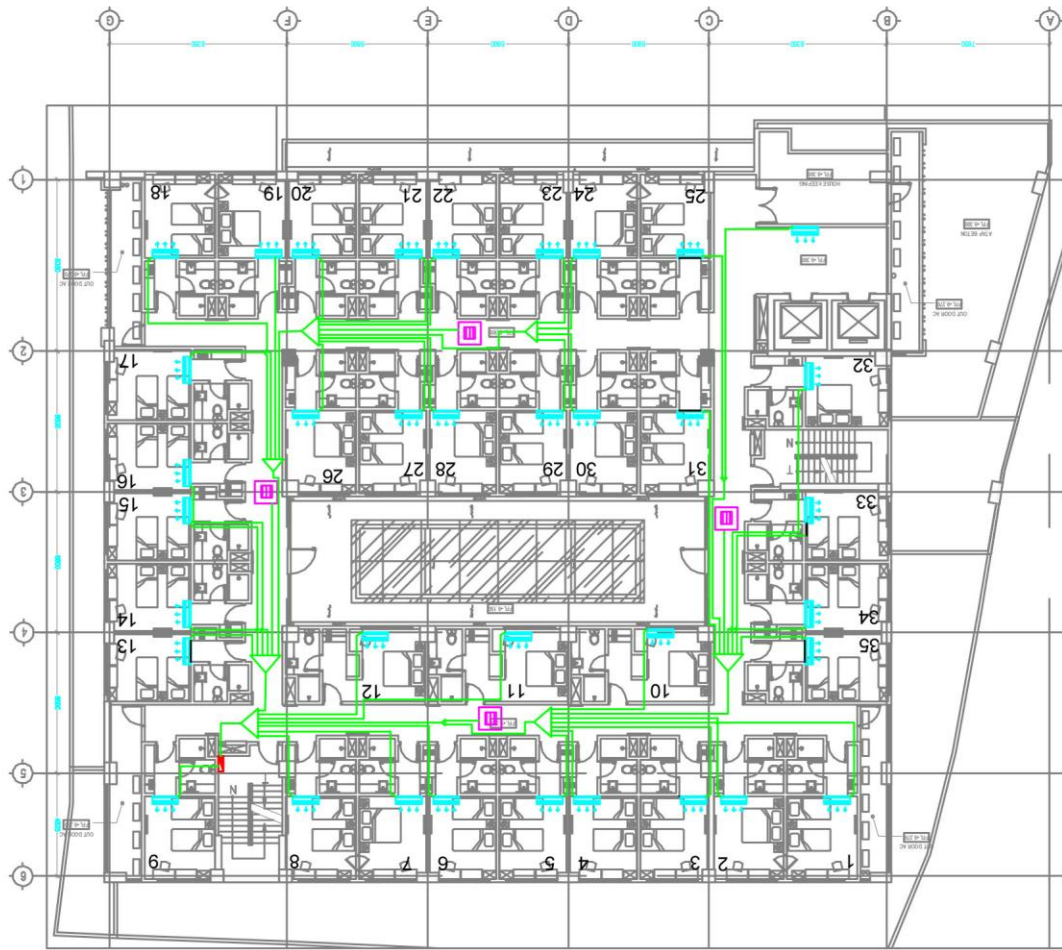
Gambar 9 hasil perancangan AC lantai basement



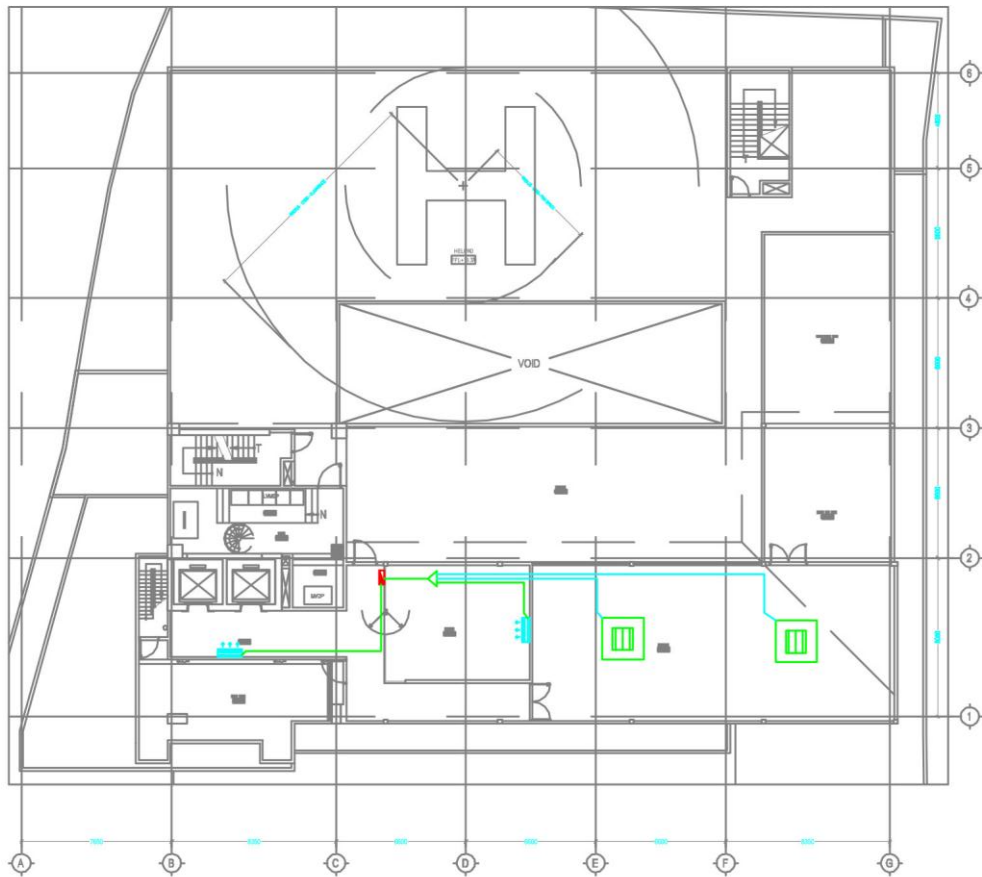
Gambar 10 hasil perancangan AC lantai 1



Gambar 11 hasil perancangan AC lantai 2



Gambar 12 hasil perancangan AC lantai 3,4,&5



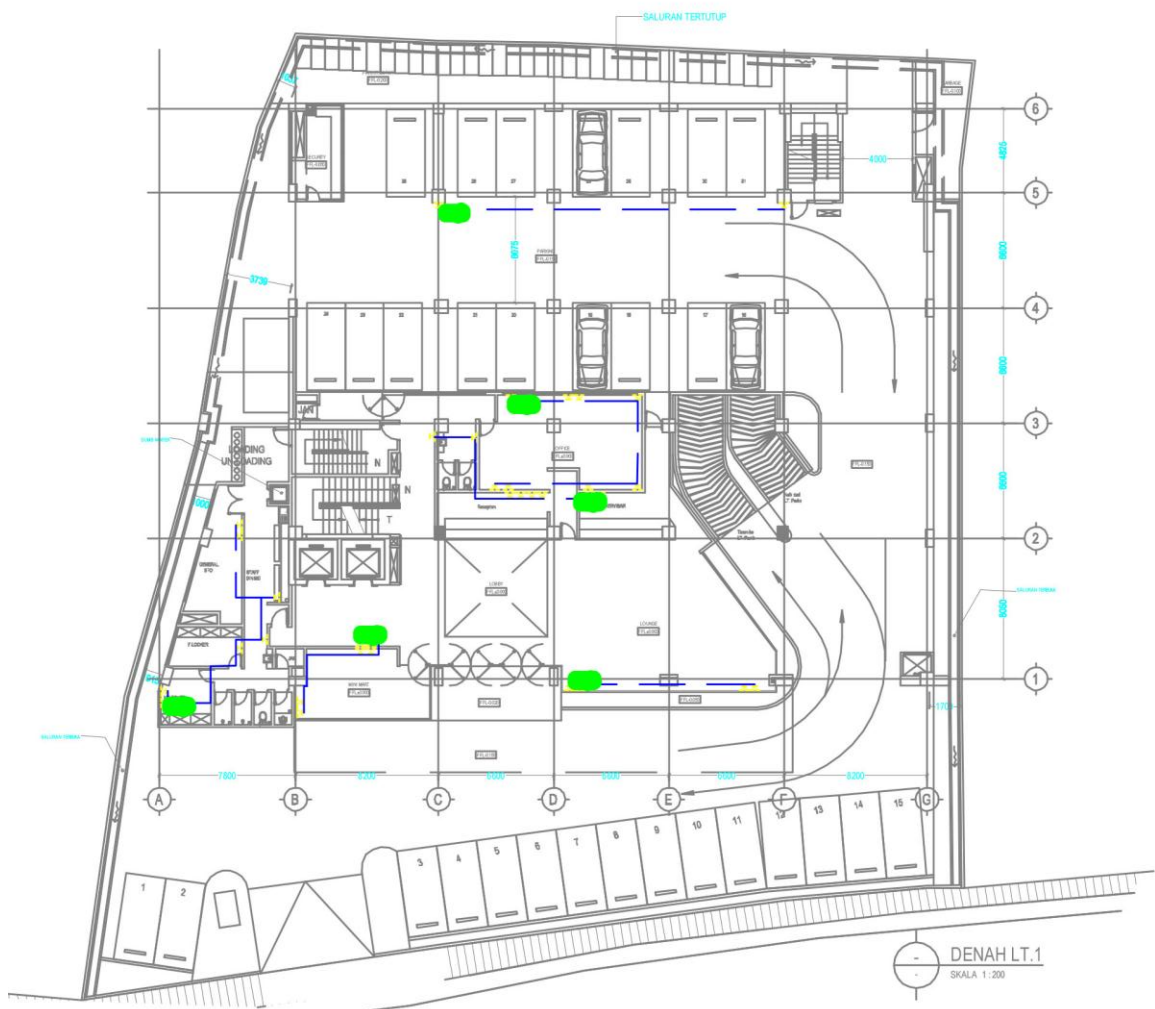
Gambar 13 hasil perancangan AC lantai 6



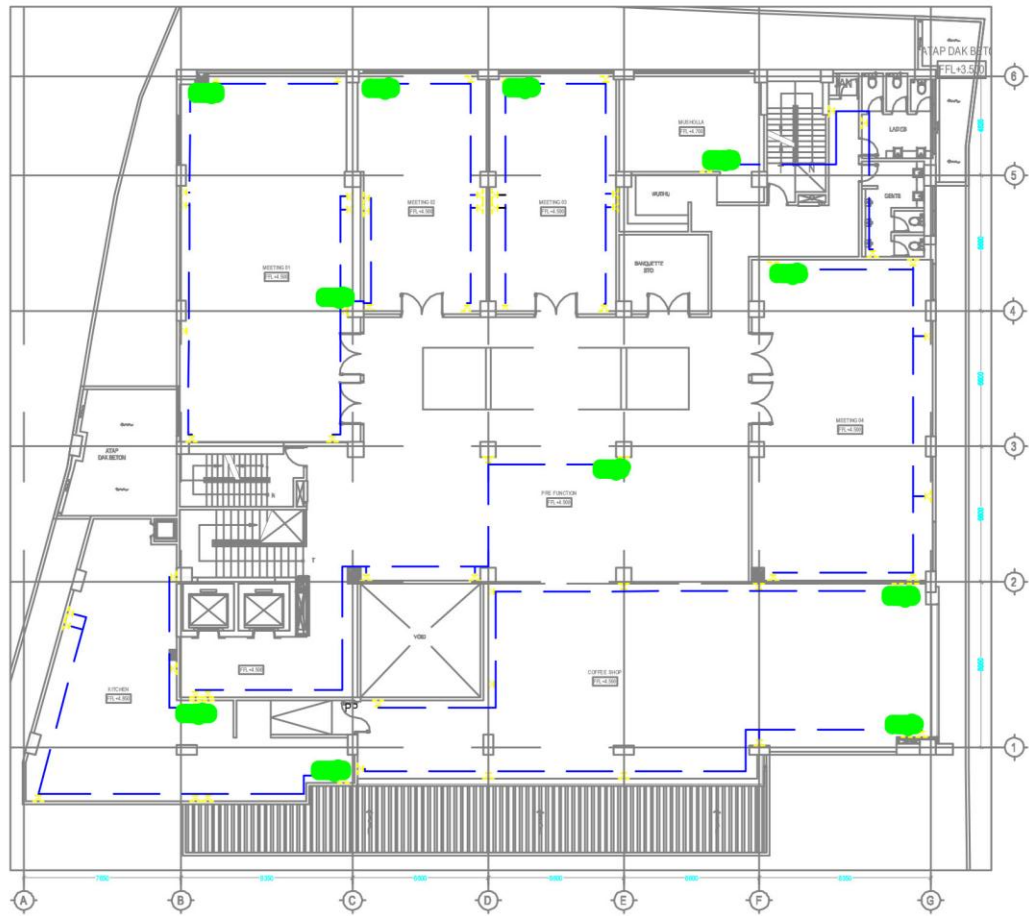
Gambar 14 keterangan lambang kotak – kontak yang digunakan



Gambar 15 hasil perancangan kotak – kontak lantai basement



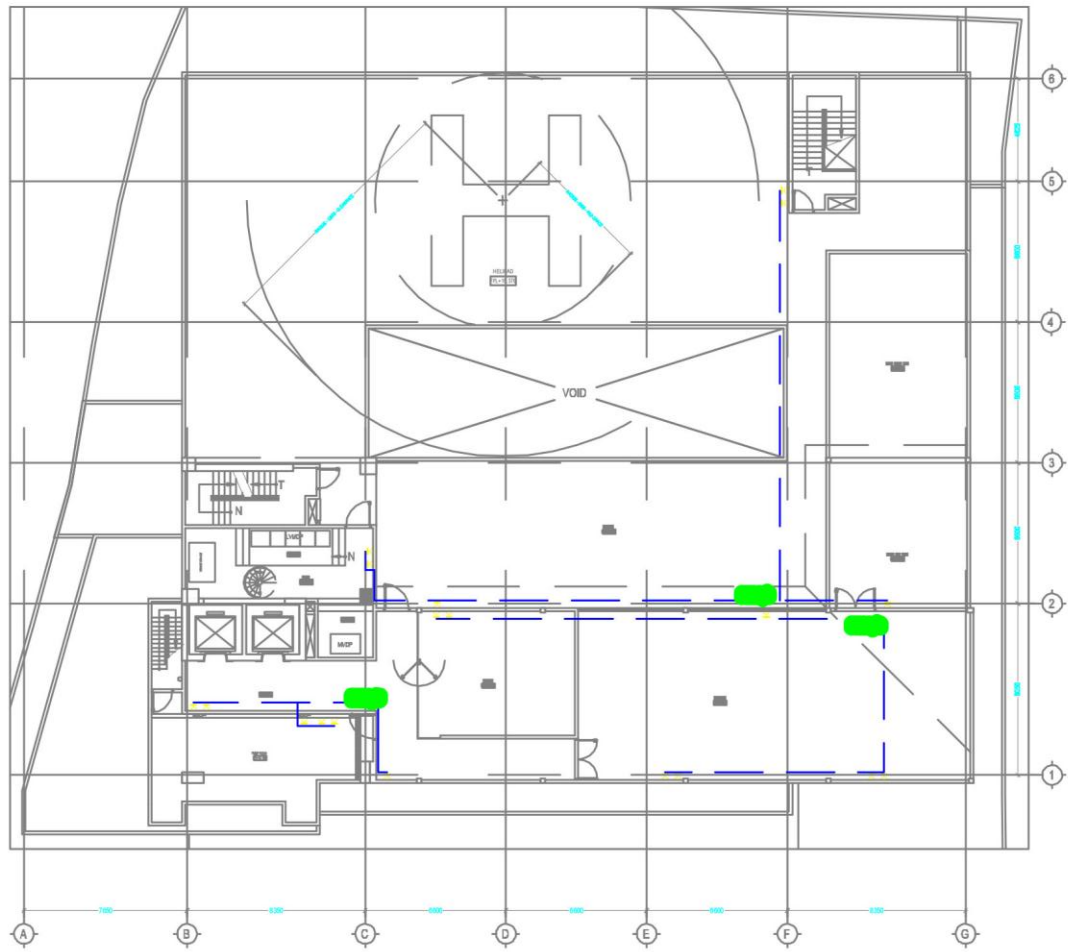
Gambar 16 hasil perancangan kotak – kontak lantai 1



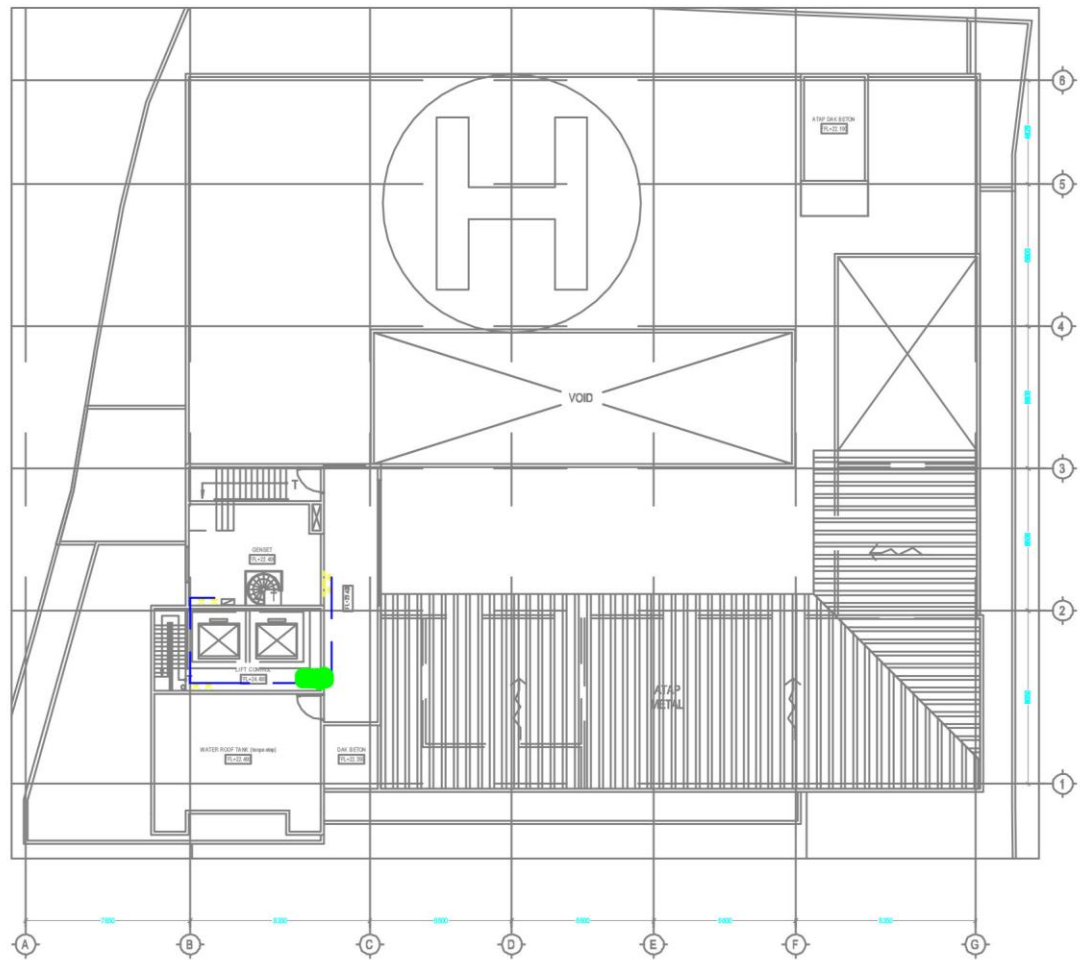
Gambar 17 hasil perancangan kotak – kontak lantai 2



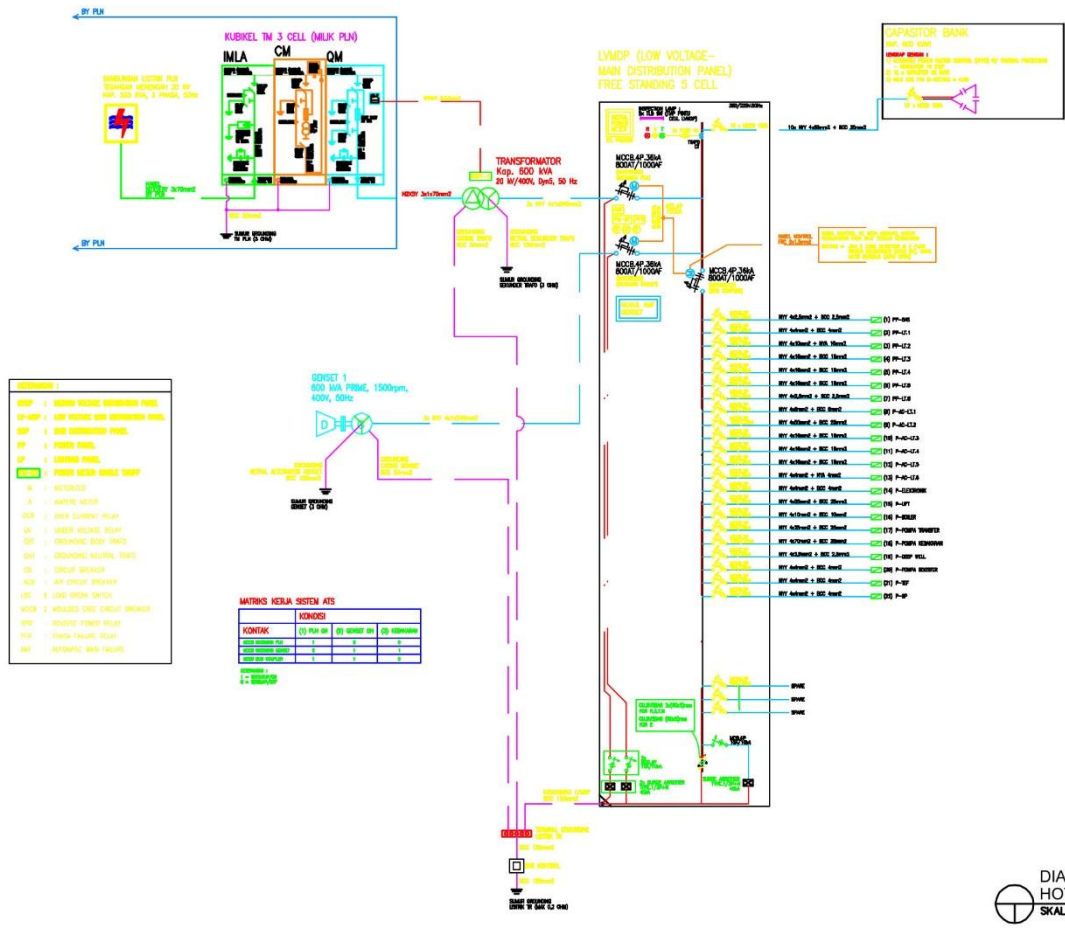
Gambar 18 hasil perancangan kotak – kontak lantai 3,4,&5



Gambar 19 hasil perancangan kotak – kontak lantai 6



Gambar 20 hasil perancangan kotak – kontak lantai atap



Gambar 21 skedul beban keseluruhan



Capacity Tables

Cooling Only 220 V, 50 Hz

Outdoor unit	Combinations of indoor units	Capacity of each indoor unit (kW)				Total capacity (kW) Rated (Min.-Max.)	Total power consumption (W) Rated (Min.-Max.)	Total current (A) Rated (Min.-Max.)
		A room	B room	C room	D room			
MKM65PV14	25	2.50				2.50 (1.76-3.45)	570 (320-890)	2.7 (1.5-4.2)
	35	3.50				3.50 (1.76-4.24)	970 (320-1,350)	4.6 (1.5-6.4)
	42	4.20				4.20 (1.78-4.76)	1,330 (320-1,700)	6.3 (1.5-8.0)
	50	5.00				5.00 (1.78-5.17)	2,250 (320-2,410)	10.7 (1.5-11.4)
	60	6.00				6.00 (1.92-7.17)	1,510 (320-1,990)	7.1 (1.5-9.4)
	25+25	2.50	2.50			5.00 (1.95-6.52)	1,180 (320-1,780)	5.6 (1.5-8.4)
	25+35	2.50	3.50			6.00 (1.96-6.90)	1,600 (320-1,980)	7.6 (1.5-9.4)
	25+42	2.27	3.82			6.09 (1.97-6.94)	1,630 (320-2,040)	7.7 (1.5-9.7)
	25+50	2.06	4.13			6.19 (1.97-6.97)	1,680 (320-2,060)	8.0 (1.5-9.8)
	25+60	1.86	4.45			6.31 (2.00-7.14)	1,350 (320-1,660)	6.4 (1.5-7.9)
	35+35	3.07	3.07			6.13 (1.96-6.79)	1,740 (320-2,110)	8.2 (1.5-10.0)
	35+42	2.82	3.39			6.21 (1.97-6.92)	1,740 (320-2,110)	8.2 (1.5-10.0)
	35+50	2.60	3.71			6.31 (1.97-6.95)	1,740 (320-2,110)	8.2 (1.5-10.0)
	35+60	2.37	4.07			6.44 (2.00-7.16)	1,420 (320-1,660)	6.7 (1.5-7.9)
	42+42	3.15	3.15			6.30 (1.98-7.05)	1,710 (320-2,110)	8.1 (1.5-10.0)
	42+50	2.92	3.48			6.40 (1.98-7.08)	1,740 (320-2,110)	8.2 (1.5-10.0)
	42+60	2.68	3.82			6.50 (2.07-7.21)	1,420 (320-1,660)	6.7 (1.5-7.9)
	50+50	3.25	3.25			6.50 (1.99-7.11)	1,780 (320-2,110)	8.4 (1.5-10.0)
	50+60	2.95	3.55			6.50 (2.00-7.22)	1,420 (320-1,660)	6.7 (1.5-7.9)
	60+60	3.25	3.25			6.50 (1.96-7.60)	1,320 (310-1,670)	6.3 (1.5-7.9)
	25+25+25	2.06	2.06	2.06		6.19 (1.99-7.87)	1,350 (320-2,020)	6.4 (1.5-9.6)
	25+25+35	1.86	1.86	2.60		6.31 (1.99-7.89)	1,390 (320-2,020)	6.6 (1.5-9.6)
	25+25+42	1.74	1.74	2.92		6.40 (2.00-7.96)	1,420 (320-2,020)	6.7 (1.5-9.6)
	25+25+50	1.63	1.63	3.25		6.50 (2.00-7.98)	1,450 (320-2,020)	6.9 (1.5-9.6)
	25+25+60	1.48	1.48	3.55		6.50 (1.99-8.44)	1,320 (310-2,000)	6.3 (1.5-9.5)
	25+35+35	1.69	2.37	2.37		6.44 (1.99-7.91)	1,450 (320-2,020)	6.9 (1.5-9.6)
	25+35+42	1.59	2.23	2.68		6.50 (2.00-7.98)	1,450 (320-2,020)	6.9 (1.5-9.6)
	25+35+50	1.48	2.07	2.95		6.50 (2.00-7.99)	1,450 (320-2,020)	6.9 (1.5-9.6)
	25+35+60	1.35	1.90	3.25		6.50 (1.99-8.44)	1,320 (310-2,000)	6.3 (1.5-9.5)
	25+42+42	1.49	2.50	2.50		6.50 (2.00-8.05)	1,420 (320-2,020)	6.7 (1.5-9.6)
	25+42+50	1.39	2.33	2.78		6.50 (2.00-8.06)	1,420 (320-2,020)	6.7 (1.5-9.6)
	35+35+35	2.17	2.17	2.17		6.50 (1.96-7.92)	1,450 (320-2,020)	6.9 (1.5-9.6)
	35+35+42	2.03	2.03	2.44		6.50 (1.96-7.99)	1,450 (320-2,020)	6.9 (1.5-9.6)
35+35+50	1.90	1.90	2.71		6.50 (1.96-8.01)	1,450 (320-2,020)	6.9 (1.5-9.6)	
35+42+42	1.91	2.29	2.29		6.50 (1.96-8.06)	1,420 (320-2,020)	6.7 (1.5-9.6)	
25+25+25+25	1.63	1.63	1.63	1.63	6.50 (1.95-8.50)	1,320 (310-2,040)	6.3 (1.5-9.7)	
25+25+25+35	1.48	1.48	1.48	2.07	6.50 (1.95-8.50)	1,320 (310-2,040)	6.3 (1.5-9.7)	
25+25+25+42	1.39	1.39	1.39	2.33	6.50 (1.94-8.52)	1,320 (310-2,040)	6.3 (1.5-9.7)	
25+25+35+35	1.35	1.35	1.90	1.90	6.50 (1.95-8.51)	1,320 (310-2,040)	6.3 (1.5-9.7)	
MKM80PV14	25	2.50				2.50 (1.76-3.45)	530 (320-890)	2.5 (1.5-4.2)
	35	3.50				3.50 (1.76-4.24)	900 (320-1,350)	4.3 (1.5-6.4)
	42	4.20				4.20 (1.78-4.76)	1,210 (320-1,700)	5.7 (1.5-8.0)
	50	5.00				5.00 (1.78-5.17)	1,910 (320-2,410)	9.0 (1.5-11.4)
	60	6.00				6.00 (1.92-7.30)	1,410 (320-2,060)	6.7 (1.5-9.8)
	71	7.10				7.10 (1.95-7.78)	1,730 (320-2,060)	8.2 (1.5-9.8)
	25+25	2.50	2.50			5.00 (1.95-6.53)	1,100 (320-1,780)	5.2 (1.5-8.4)
	25+35	2.50	3.50			6.00 (1.96-6.92)	1,510 (320-1,980)	7.1 (1.5-9.4)
	25+42	2.50	4.20			6.70 (1.97-7.40)	1,760 (320-2,200)	8.3 (1.5-10.4)
	25+50	2.35	4.69			7.04 (1.97-7.66)	1,930 (320-2,340)	9.1 (1.5-11.1)
	25+60	2.09	5.02			7.11 (2.00-8.47)	1,480 (320-2,010)	7.0 (1.5-9.5)
	25+71	1.87	5.31			7.18 (2.01-8.71)	1,450 (320-2,020)	6.9 (1.5-9.6)
	35+35	3.50	3.50			7.00 (1.96-7.49)	1,960 (320-2,340)	9.3 (1.5-11.1)
	35+42	3.20	3.85			7.05 (1.97-7.66)	1,970 (320-2,340)	9.3 (1.5-11.1)
	35+50	2.93	4.18			7.11 (1.97-7.69)	1,970 (320-2,350)	9.3 (1.5-11.1)
	35+60	2.65	4.53			7.18 (2.00-8.49)	1,510 (320-2,010)	7.1 (1.5-9.5)
	35+71	2.39	4.86			7.25 (2.01-8.72)	1,480 (320-2,020)	7.0 (1.5-9.6)
	42+42	3.55	3.55			7.10 (1.98-7.98)	1,900 (320-2,460)	9.0 (1.5-11.6)
	42+50	3.27	3.89			7.16 (1.98-8.02)	1,930 (320-2,460)	9.1 (1.5-11.6)
	42+60	2.98	4.25			7.23 (2.00-8.56)	1,510 (320-2,010)	7.1 (1.5-9.5)
	42+71	2.71	4.59			7.30 (2.01-8.77)	1,480 (310-2,020)	7.0 (1.5-9.6)
	50+50	3.61	3.61			7.21 (1.99-8.06)	1,930 (320-2,460)	9.1 (1.5-11.6)
	50+60	3.31	3.97			7.28 (2.00-8.57)	1,510 (320-2,010)	7.1 (1.5-9.5)
	50+71	3.04	4.32			7.36 (2.01-8.79)	1,480 (310-2,020)	7.0 (1.5-9.6)
	60+60	3.68	3.68			7.35 (1.96-8.84)	1,420 (310-1,960)	6.7 (1.5-9.3)
	60+71	3.40	4.03			7.43 (1.94-9.13)	1,450 (310-1,970)	6.9 (1.5-9.3)
	71+71	3.76	3.76			7.51 (1.91-9.14)	1,480 (310-1,970)	7.0 (1.5-9.3)

Spesifikasi



CEILING MOUNTED CASSETTE TYPE

SKYAIR INVERTER R32

		50	60	71	100	125	140		
Model Name	Indoor unit	FCF50CVM	FCF60CVM	FCF71CVM	FCF100CVM	FCF125CVM	FCF140CVM		
	Outdoor unit	RZF50CVM	RZF60CVM	RZF71CVM	RZF100CVM	RZF125CVM	RZF140CVM		
Power supply	Outdoor unit	1 Phase / 220-230V / 60Hz							
Cooling Capacity ^{1,2} Rated (Min. - Max.)	kW	5.0 (3.2-5.6)	6.0 (3.2-6.0)	7.1 (3.2-8.0)	10.0 (5.0-11.2)	12.5 (5.7-14.0)	14.0 (6.2-15.5)		
		Btu/h	17,100 (10,900-19,100)	20,500 (10,900-20,500)	24,200 (10,900-27,300)	34,100 (17,100-38,200)	42,700 (19,500-47,800)	47,800 (21,200-52,900)	
Power consumption	Cooling	kW	1.14	1.53	1.93	2.97	4.18	5.47	
COP	WW	4.39	3.92	3.68	3.37	2.99	2.56		
CSPF	Wh/Wh	6.60	6.31	6.17	5.50	5.15	5.00		
Indoor unit	Colour	Fresh white							
	Airflow rate (H / HM / M / ML / L)	Unit	Fresh white						
		Decoration panel	Fresh white						
	m³/min	23.0 / 21.0 / 18.5 / 16.0 / 13.5	34.5 / 31.0 / 27.5 / 24.0 / 20.0		36.5 / 33.0 / 29.0 / 25.0 / 21.0				
		cfm	812 / 741 / 653 / 565 / 477	1,218 / 1,094 / 971 / 847 / 706		1,288 / 1,165 / 1,024 / 883 / 741			
	Sound pressure level ¹ (H / HM / M / ML / L)	Unit	37.0 / 34.5 / 32.0 / 29.5 / 27.5		45.0 / 41.5 / 38.0 / 35.0 / 32.5		46.0 / 43.0 / 40.0 / 36.0 / 32.5		
		dB(A)	37.0 / 34.5 / 32.0 / 29.5 / 27.5		45.0 / 41.5 / 38.0 / 35.0 / 32.5		46.0 / 43.0 / 40.0 / 36.0 / 32.5		
	Dimensions (H×W×D)	Unit	256×840×840		50×950×950		296×840×840		
		mm	256×840×840		50×950×950		296×840×840		
	Machine weight	Unit	22		5.5		24		
kg		22		5.5		24			
Decoration panel	kg	22		5.5		24			
Certified Operation range	°CWB	14 to 25							
Outdoor unit	Colour	Ivory white							
	Coil	Micro channel							
	Compressor	Type	Hermetically sealed swing type						
		Motor output	1.30		1.60		2.40		
	Refrigerant charge (R32)	kg	1.2(Charged for 30 m)		1.3(Charged for 30 m)		1.9(Charged for 30 m)		
	Sound pressure level ¹	Cooling	48		49		52		54
		Night quiet mode	44		45		45		54
	Dimensions (H×W×D)	mm	595×845×300		695×930×350		990×940×320		
	Machine weight	kg	41		48		64		
	Certified Operation range	°CDB	21 to 46						
Piping connections	Liquid (Flare)	mm							
	Gas (Flare)	mm							
	Drain	Indoor unit	mm				mm		
	Outdoor unit	mm		mm		mm			
Max. Interunit piping length	m	φ26.0 (Hole)		50 (Equivalent length 70)		φ26.0 (Hole)			
Max. installation level difference	m	30							
Heat insulation		Both liquid and gas piping							

Spesifikasi



CEILING MOUNTED CASSETTE TYPE

SKYAIR INVERTER R32

		50	60	71	100	125	140		
Model Name	Indoor unit	FCF50CVM	FCF60CVM	FCF71CVM	FCF100CVM	FCF125CVM	FCF140CVM		
	Outdoor unit	RZF50CVM	RZF60CVM	RZF71CVM	RZF100CVM	RZF125CVM	RZF140CVM		
Power supply	Outdoor unit	1 Phase / 220-230V / 60Hz							
Cooling Capacity ^{1,2} Rated (Min. - Max.)	kW	5.0 (3.2-5.6)	6.0 (3.2-6.0)	7.1 (3.2-8.0)	10.0 (5.0-11.2)	12.5 (5.7-14.0)	14.0 (6.2-15.5)		
		Btu/h	17,100 (10,900-19,100)	20,500 (10,900-20,500)	24,200 (10,900-27,300)	34,100 (17,100-38,200)	42,700 (19,500-47,800)	47,800 (21,200-52,900)	
Power consumption	Cooling	kW	1.14	1.53	1.93	2.97	4.18	5.47	
COP		W/W	4.39	3.92	3.68	3.37	2.99	2.56	
CSPF		Wh/Wh	6.60	6.31	6.17	5.50	5.15	5.00	
Indoor unit	Colour	Unit	-----						
		Decoration panel	Fresh white						
	Airflow rate (H / HM / M / ML / L)	m ³ /min	23.0 / 21.0 / 18.5 / 16.0 / 13.5				34.5 / 31.0 / 27.5 / 24.0 / 20.0		36.5 / 33.0 / 29.0 / 25.0 / 21.0
		cfm	812 / 741 / 653 / 565 / 477				1218 / 1,094 / 971 / 847 / 706		1,288 / 1,165 / 1,024 / 883 / 741
	Sound pressure level ¹ (H / HM / M / ML / L)	dB(A)	37.0 / 34.5 / 32.0 / 29.5 / 27.5				45.0 / 41.5 / 38.0 / 35.0 / 32.5		46.0 / 43.0 / 40.0 / 36.0 / 32.5
		mm	256x840x840				298x840x840		
	Dimensions (HxWxD)	Unit	50x950x950						
		Decoration panel	298x840x840						
Machine weight	Unit	22					24		
	Decoration panel	5.5							
Certified Operation range	°CWB	14 to 25							
Outdoor unit	Colour	Ivory white							
	Coil	Micro channel							
	Compressor	Hermetically sealed swing type							
		Motor output	kW		1.30		1.60	2.40	
		Refrigerant charge (R32)	kg		1.2(Charged for 30 m)		1.3(Charged for 30 m)	1.9(Charged for 30 m)	
	Sound pressure level ¹	Cooling	dB(A)		48		49	52	54
		Night quiet mode	dB(A)		44		45	45	
	Dimensions (HxWxD)	mm		595x845x300		695x930x350		990x940x320	
Machine weight	kg		41		48		64		
Certified Operation range	°CDB	21 to 46							
Piping connections	Liquid (Flare)	mm						φ9.5	
	Gas (Flare)	mm						φ15.9	
	Drain	Indoor unit	mm						VP25 (L.D.φ25xO.D.φ32)
		Outdoor unit	mm		φ26.0 (Hole)		φ18.0 (Hole)		φ26.0 (Hole)
Max. interunit piping length	m		50 (Equivalent length 70)				30		
Max. installation level difference	m							30	
Heat insulation	Both liquid and gas piping								

Spesifikasi



CEILING MOUNTED CASSETTE TYPE

SKYAIR INVERTER R32

		50	60	71	100	125	140		
Model Name	Indoor unit	FCF50CVM	FCF60CVM	FCF71CVM	FCF100CVM	FCF125CVM	FCF140CVM		
	Outdoor unit	RZF50CVM	RZF60CVM	RZF71CVM	RZF100CVM	RZF125CVM	RZF140CVM		
Power supply	Outdoor unit	1 Phase / 220-230V / 60Hz							
Cooling Capacity ^{1,2} Rated (Min. - Max.)	kW	5.0 (3.2-5.6)	6.0 (3.2-6.0)	7.1 (3.2-8.0)	10.0 (5.0-11.2)	12.5 (5.7-14.0)	14.0 (6.2-15.5)		
		Btu/h	17,100 (10,900-19,100)	20,500 (10,900-20,500)	24,200 (10,900-27,300)	34,100 (17,100-38,200)	42,700 (19,500-47,800)	47,800 (21,200-52,900)	
Power consumption	Cooling	kW	1.14	1.53	1.93	2.97	4.18	5.47	
COP		W/W	4.39	3.92	3.68	3.37	2.99	2.56	
CSPF		Wh/Wh	6.60	6.31	6.17	5.50	5.15	5.00	
Indoor unit	Colour	Unit	-----						
		Decoration panel	Fresh white						
	Airflow rate (H / HM / M / ML / L)	m ³ /min	23.0 / 21.0 / 18.5 / 16.0 / 13.5				34.5 / 31.0 / 27.5 / 24.0 / 20.0		36.5 / 33.0 / 29.0 / 25.0 / 21.0
		cfm	812 / 741 / 653 / 565 / 477				1218 / 1,094 / 971 / 847 / 706		1,288 / 1,165 / 1,024 / 883 / 741
	Sound pressure level ¹ (H / HM / M / ML / L)	dB(A)	37.0 / 34.5 / 32.0 / 29.5 / 27.5				45.0 / 41.5 / 38.0 / 35.0 / 32.5		46.0 / 43.0 / 40.0 / 36.0 / 32.5
		mm	256x840x840				50x950x950		298x840x840
	Dimensions (HxWxD)	Unit							
		Decoration panel							
Machine weight	Unit	22					24		
	Decoration panel						5.5		
Certified Operation range	°CWB	14 to 25							
Outdoor unit	Colour	Ivory white							
	Coil	Micro channel							
	Compressor	Hermetically sealed swing type							
		Motor output	kW		1.30		1.60	2.40	
	Refrigerant charge (R32)	kg	1.2(Charged for 30 m)		1.3(Charged for 30 m)		1.9(Charged for 30 m)		
	Sound pressure level ¹	Cooling	dB(A)		48		49	52	54
		Night quiet mode	dB(A)		44		45	45	
	Dimensions (HxWxD)	mm	595x845x300		695x930x350		990x940x320		
Machine weight	kg	41		48		64			
Certified Operation range	°CDB	21 to 46							
Piping connections	Liquid (Flare)	mm							
	Gas (Flare)	mm							
	Drain	Indoor unit	mm						
		Outdoor unit	mm		mm		mm		
Max. interunit piping length	m	φ26.0 (Hole)		50 (Equivalent length 70)		φ18.0 (Hole)		φ26.0 (Hole)	
Max. installation level difference	m	30							
Heat insulation	Both liquid and gas piping								

Spesifikasi



CEILING MOUNTED CASSETTE TYPE

SKYAIR INVERTER R32

		50	60	71	100	125	140
Model Name	Indoor unit	FCF50CVM	FCF60CVM	FCF71CVM	FCF100CVM	FCF125CVM	FCF140CVM
	Outdoor unit	RZF50CVM	RZF60CVM	RZF71CVM	RZF100CVM	RZF125CVM	RZF140CVM
Power supply	Outdoor unit	1 Phase / 220-230V / 60Hz					
Cooling Capacity ^{1,2} Rated (Min. - Max.)	kW	5.0 (3.2-5.6)	6.0 (3.2-6.0)	7.1 (3.2-8.0)	10.0 (5.0-11.2)	12.5 (5.7-14.0)	14.0 (6.2-15.5)
	Btu/h	17,100 (10,900-19,100)	20,500 (10,900-20,500)	24,200 (10,900-27,300)	34,100 (17,100-38,200)	42,700 (19,500-47,800)	47,800 (21,200-52,900)
Power consumption	Cooling	kW	1.14	1.53	1.93	2.97	4.18
COP		W/W	4.39	3.92	3.68	3.37	2.99
CSPF		Wh/Wh	6.60	6.31	6.17	5.50	5.15
Indoor unit	Colour	Unit	-----				
		Decoration panel	Fresh white				
	Airflow rate (H / HM / M / ML / L)	m ³ /min	23.0 / 21.0 / 18.5 / 16.0 / 13.5				
		cfm	812 / 741 / 653 / 565 / 477				
	Sound pressure level ¹ (H / HM / M / ML / L)	dB(A)	37.0 / 34.5 / 32.0 / 29.5 / 27.5				
			45.0 / 41.5 / 38.0 / 35.0 / 32.5				
	Dimensions (H×W×D)	Unit	mm				298×840×840
		Decoration panel	mm				50×950×950
Machine weight	Unit	kg				24	
	Decoration panel	kg				5.5	
Certified Operation range	°CWB	14 to 25					
Outdoor unit	Colour	Ivory white					
	Coil	Type					
		Micro channel					
	Compressor	Type					
		Hermetically sealed swing type					
	Motor output	kW	1.30		1.60		2.40
	Refrigerant charge (R32)	kg	1.2(Charged for 30 m)		1.3(Charged for 30 m)		1.9(Charged for 30 m)
	Sound pressure level ¹	Cooling	dB(A)	48		49	
Night quiet mode		dB(A)	44		45		54
Dimensions (H×W×D)	mm	595×845×300			695×930×350		990×940×320
Machine weight	kg	41			48		64
Certified Operation range	°CDB	21 to 46					
Piping connections	Liquid (Flare)	mm	φ9.5				
	Gas (Flare)	mm	φ15.9				
	Drain	Indoor unit	mm	VP25 (L.D.φ25×O.D.φ32)			
		Outdoor unit	mm	φ26.0 (Hole)		φ18.0 (Hole)	
Max. interunit piping length	m	50 (Equivalent length 70)					
Max. installation level difference	m	30					
Heat insulation		Both liquid and gas piping					

Spesifikasi



CEILING MOUNTED CASSETTE TYPE

SKYAIR INVERTER R32

		50	60	71	100	125	140					
Model Name	Indoor unit	FCF50CVM	FCF60CVM	FCF71CVM	FCF100CVM	FCF125CVM	FCF140CVM					
	Outdoor unit	RZF50CVM	RZF60CVM	RZF71CVM	RZF100CVM	RZF125CVM	RZF140CVM					
Power supply	Outdoor unit	1 Phase / 220-230V / 60Hz										
Cooling Capacity ^{1,2} Rated (Min. - Max.)	kW	5.0 (3.2-5.6)	6.0 (3.2-6.0)	7.1 (3.2-8.0)	10.0 (5.0-11.2)	12.5 (5.7-14.0)	14.0 (6.2-15.5)					
		Btu/h	17,100 (10,900-19,100)	20,500 (10,900-20,500)	24,200 (10,900-27,300)	34,100 (17,100-38,200)	42,700 (19,500-47,800)	47,800 (21,200-52,900)				
Power consumption	Cooling	kW	1.14	1.53	1.93	2.97	4.18	5.47				
COP		W/W	4.39	3.92	3.68	3.37	2.99	2.56				
CSPF		Wh/Wh	6.60	6.31	6.17	5.50	5.15	5.00				
Indoor unit	Colour	Unit	-----									
		Decoration panel	Fresh white									
	Airflow rate (H / HM / M / ML / L)	m ³ /min	23.0 / 21.0 / 18.5 / 16.0 / 13.5				34.5 / 31.0 / 27.5 / 24.0 / 20.0		36.5 / 33.0 / 29.0 / 25.0 / 21.0			
		cfm	812 / 741 / 653 / 565 / 477				1218 / 1,094 / 971 / 847 / 706		1,288 / 1,165 / 1,024 / 883 / 741			
	Sound pressure level ¹ (H / HM / M / ML / L)	dB(A)	37.0 / 34.5 / 32.0 / 29.5 / 27.5				45.0 / 41.5 / 38.0 / 35.0 / 32.5		46.0 / 43.0 / 40.0 / 36.0 / 32.5			
		mm	256x840x840				50x950x950		298x840x840			
	Dimensions (HxWxD)	Unit										
		Decoration panel										
Machine weight	Unit	22				24						
	Decoration panel					5.5						
Certified Operation range	°CWB	14 to 25										
Outdoor unit	Colour	Ivory white										
	Coil	Micro channel										
	Compressor	Hermetically sealed swing type										
		Motor output	kW		1.30		1.60		2.40			
		Refrigerant charge (R32)	kg		1.2(Charged for 30 m)		1.3(Charged for 30 m)		1.9(Charged for 30 m)			
	Sound pressure level ¹	Cooling	dB(A)		48		49		52		54	
		Night quiet mode	dB(A)		44		45		45		45	
	Dimensions (HxWxD)	mm		595x845x300		695x930x350		990x940x320				
Machine weight	kg		41		48		64					
Certified Operation range	°CDB	21 to 46										
Piping connections	Liquid (Flare)	mm		φ9.5								
	Gas (Flare)	mm		φ15.9								
	Drain	Indoor unit	mm		VP25 (L.D.φ25xO.D.φ32)							
		Outdoor unit	mm		φ26.0 (Hole)		φ18.0 (Hole)		φ26.0 (Hole)			
Max. interunit piping length	m		50 (Equivalent length 70)									
Max. installation level difference	m		30									
Heat insulation	Both liquid and gas piping											

Miniature Circuit Breaker (MCB) Acti 9 IC60N dengan Indikator Pengaman (VisiTrip & VisiSafe)

PTFDB



◇ LMK ◇

1



VisiTrip & VisiSafe

SNI 04-6507.1-2002/Amd1-2006 (IEC 60898-1): 6 kA, IEC 60947-2: 10 kA

MCB IC60N - Kurva C

Direkomendasikan untuk spesifikasi kapasitas pemutusan 6 kA.

- Kurva C (magnetis trip antara 5 dan 10 In).
- Lebar modul per kutub = 18 mm.
- Cocok untuk aplikasi gedung komersil dan industri.
- Koneksi kabel ke terminal :
1 sampai 25 A → maksimum 16 mm² kabel serabut atau 25 mm² kabel tunggal.
32 sampai 63 A → maksimum 25 mm² kabel serabut atau 35 mm² kabel tunggal.



MCB IC60N
1 Kutub



MCB IC60N
2 Kutub



MCB IC60N
3 Kutub



MCB IC60N
4 Kutub

Kutub	Pengenal (A)	Referensi	Harga (Rp)	SS
1 kutub	1	A9F74101	112,750	1
	2	A9F74102	112,750	1
	3	A9F74103	112,750	1
	4	A9F74104	112,750	1
	6	A9F74106	102,850	1
	10	A9F74110	102,850	1
	16	A9F74118	102,850	1
	20	A9F74120	102,850	1
	25	A9F74125	107,800	1
	32	A9F74132	123,200	1
	40	A9F74140	128,150	1
	50	A9F74150	174,350	1
	63	A9F74183	205,150	1
2 kutub	1	A9F74201	314,050	1
	2	A9F74202	314,050	1
	3	A9F74203	314,050	1
	4	A9F74204	314,050	1
	6	A9F74206	261,800	1
	10	A9F74210	261,800	1
	16	A9F74216	261,800	1
	20	A9F74220	261,800	1
	25	A9F74225	324,500	1
	32	A9F74232	350,350	1
	40	A9F74240	366,300	1
	50	A9F74250	397,650	1
	63	A9F74283	429,000	1
3 kutub	1	A9F74301	468,050	1
	2	A9F74302	468,050	1
	3	A9F74303	468,050	1
	4	A9F74304	468,050	1
	6	A9F74306	397,650	1
	10	A9F74310	397,650	1
	16	A9F74316	397,650	1
	20	A9F74320	397,650	1
	25	A9F74325	427,350	1
	32	A9F74332	433,950	1
	40	A9F74340	465,300	1
	50	A9F74350	651,750	1
	63	A9F74383	792,550	1
4 kutub	1	A9F74401	552,750	2
	2	A9F74402	552,750	2
	3	A9F74403	552,750	2
	4	A9F74404	552,750	2
	6	A9F74406	494,450	1
	10	A9F74410	494,450	1
	16	A9F74416	494,450	1
	20	A9F74420	494,450	1
	25	A9F74425	541,750	1
	32	A9F74432	650,650	1
	40	A9F74440	659,450	1
	50	A9F74450	969,100	1
	63	A9F74483	1,120,900	1

Catatan : Aksesori, lihat halaman 1-16



Harga sudah termasuk PPN 10%

1-5

EasyPact Circuit Breaker

100 A

PTCCB

2

EasyPact Ezc100 B/F/N/H

- Aplikasi untuk instalasi listrik dengan kapasitas pemutusan rendah.
- Kapasitas Pemutusan : 7.5 kA s/d 30 kA pada 380/415 VAC.
- Thermal magnetic trip unit, tidak dapat disetel (non adjustable).
- Fixed type, front connection.
- Satu ukuran (frame size) untuk semua rating.
- Memenuhi standar IEC 60947-2.



Ezc100B, 3P



Ezc100F, 3P



Ezc100N, 3P



Ezc100H, 2P

EasyPact	I _r (A)	2P	Harga (Rp)	SS	3P	Harga (Rp)	SS
Ezc100B - 7.5 kA							
Ezc100B	15				Ezc100B3015	600,600	1
Ezc100B	20				Ezc100B3020	600,600	1
Ezc100B	25				Ezc100B3025	600,600	1
Ezc100B	30				Ezc100B3030	600,600	1
Ezc100B	40				Ezc100B3040	600,600	1
Ezc100B	50				Ezc100B3050	600,600	1
Ezc100B	60				Ezc100B3060	655,050	1

Ezc100F - 10 kA							
Ezc100F	15				Ezc100F3015	641,300	1
Ezc100F	20				Ezc100F3020	641,300	1
Ezc100F	25				Ezc100F3025	641,300	1
Ezc100F	30				Ezc100F3030	641,300	1
Ezc100F	40				Ezc100F3040	641,300	1
Ezc100F	50				Ezc100F3050	641,300	1
Ezc100F	60				Ezc100F3060	709,500	1
Ezc100F	75				Ezc100F3075	709,500	1
Ezc100F	80				Ezc100F3080	709,500	1
Ezc100F	100				Ezc100F3100	709,500	1

Ezc100N - 18 kA (380V) / 15 kA (400/415V)							
Ezc100N	15				Ezc100N3015	794,750	1
Ezc100N	20				Ezc100N3020	794,750	1
Ezc100N	25				Ezc100N3025	794,750	1
Ezc100N	30				Ezc100N3030	794,750	1
Ezc100N	40				Ezc100N3040	794,750	1
Ezc100N	50				Ezc100N3050	794,750	1
Ezc100N	60				Ezc100N3060	868,450	1
Ezc100N	75				Ezc100N3075	868,450	1
Ezc100N	80				Ezc100N3080	868,450	1
Ezc100N	100				Ezc100N3100	868,450	1

Ezc100H - 30 kA							
Ezc100H	15	Ezc100H2015	822,800	2	Ezc100H3015	926,750	1
Ezc100H	20	Ezc100H2020	822,800	2	Ezc100H3020	926,750	1
Ezc100H	25	Ezc100H2025	822,800	2	Ezc100H3025	926,750	1
Ezc100H	30	Ezc100H2030	822,800	2	Ezc100H3030	926,750	1
Ezc100H	40	Ezc100H2040	822,800	2	Ezc100H3040	926,750	1
Ezc100H	50	Ezc100H2050	822,800	2	Ezc100H3050	926,750	1
Ezc100H	60	Ezc100H2060	822,800	2	Ezc100H3060	1,018,050	1
Ezc100H	75	Ezc100H2075	822,800	2	Ezc100H3075	1,018,050	1
Ezc100H	80	Ezc100H2080	822,800	2	Ezc100H3080	1,018,050	1
Ezc100H	100	Ezc100H2100	822,800	2	Ezc100H3100	1,018,050	1

Schneider
Electric

Harga sudah termasuk PPN 10%

2-3

EasyPact Circuit Breaker 250 A

PTCCB

2

EasyPact Ezc250 F/N/H

- Aplikasi untuk instalasi listrik dengan kapasitas pemutusan rendah.
- Kapasitas Pemutusan : 18 kA s/d 36 kA pada 380/415 VAC.
- Thermal magnetic trip unit, tidak dapat disetel (non adjustable).
- Fixed type, front connection.
- Satu ukuran (frame size) untuk semua rating.
- Memenuhi standar IEC 60947-2.



Ezc250F, 3P

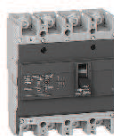
EasyPact	Ir (A)	2P	Harga (Rp)	SS	3P	Harga (Rp)	SS
Ezc250F - 18 kA							
Ezc250F	100				Ezc250F3100	1,361,800	1
Ezc250F	125				Ezc250F3125	1,382,600	1
Ezc250F	160				Ezc250F3160	1,432,200	1
Ezc250F	200				Ezc250F3200	1,507,550	1
Ezc250F	225				Ezc250F3225	1,507,550	1
Ezc250F	250				Ezc250F3250	1,507,550	1

Ezc250N - 25 kA							
Ezc250N	100				Ezc250N3100	1,450,350	1
Ezc250N	125				Ezc250N3125	1,519,100	1
Ezc250N	160				Ezc250N3160	1,582,900	1
Ezc250N	200				Ezc250N3200	1,884,850	1
Ezc250N	225				Ezc250N3225	1,884,850	1
Ezc250N	250				Ezc250N3250	1,884,850	1



Ezc250N, 3P

Ezc250H - 36 kA							
Ezc250H	100	Ezc250H2100	1,533,950	2	Ezc250H3100	1,684,100	1
Ezc250H	125	Ezc250H2125	1,533,950	2	Ezc250H3125	1,737,450	1
Ezc250H	160	Ezc250H2160	1,602,700	2	Ezc250H3160	1,884,850	1
Ezc250H	200	Ezc250H2200	1,679,900	2	Ezc250H3200	1,960,200	1
Ezc250H	225	Ezc250H2225	1,679,900	2	Ezc250H3225	1,960,200	1
Ezc250H	250	Ezc250H2250	1,679,900	2	Ezc250H3250	1,960,200	1



Ezc250H, 4P

EasyPact	Ir (A)	4P4T	Harga (Rp)	SS
Ezc250N - 25 kA				
Ezc250N	100	Ezc250N44100	1,900,800	2
Ezc250N	125	Ezc250N44125	1,988,050	2
Ezc250N	160	Ezc250N44160	2,063,600	2
Ezc250N	200	Ezc250N44200	2,226,950	2
Ezc250N	225	Ezc250N44225	2,226,950	2
Ezc250N	250	Ezc250N44250	2,226,950	2

Ezc250H - 36 kA				
Ezc250H	100	Ezc250H44100	2,234,100	2
Ezc250H	125	Ezc250H44125	2,234,100	2
Ezc250H	160	Ezc250H44160	2,481,600	2
Ezc250H	200	Ezc250H44200	2,588,850	2
Ezc250H	225	Ezc250H44225	2,588,850	2
Ezc250H	250	Ezc250H44250	2,588,850	2

2-4

Harga sudah termasuk PPN 10%

Schneider
Electric

NYM 2 x (1.5 - 35) mm² 300/500 V Cu / PVC / PVC

(Copper Conductor, PVC Insulated, PVC Sheathed)
Standard Specification : SNI 04-6629.4 : 2006

Construction Data

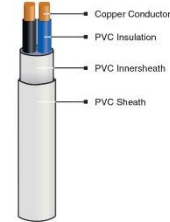
Nom. Cross Section Area	Overall Diameter approx.	Cable Weight approx.
mm ²	mm	kg/km
1.5	9.5	116
2.5	10.5	157
4	11.5	203
6	12.5	262
10	16.0	426
16	19.0	638
25	23.0	962
35	26.0	1,270

APPLICATION :

For building wire installed in conduit in dry location and interwiring in switch board and control panel, inherently flame retardant in compliance with IEC 60332-1.

Special Features on Request

- Tinned Coated Copper Conductor
- Fire Resistance
- Oil Resistance
- Flame Retardant Cat. A, B, C
- Heat Resistance
- Nylon Coated



Note :

Conductor Shaped

1.5 - 10 sqmm supplied in solid (re) or non compacted circular stranded (rm) conductor shape
16 - 35 sqmm supplied in non compacted circular stranded (rm) conductor shape

Tinned Coated Copper Conductor

Electrical properties for tinned coated copper conductor will be submitted upon request

Standard Packing

1.5 - 4 sqmm supplied in coil @ 100 m or in wooden drum @ 1000/2000 m
6 - 35 sqmm supplied in wooden drum @ 1000 m
Length tolerance per drum ±2%.

Electrical Data

Nom. Cross Sect. (mm ²)	Conductor		Insulation	Inductance (mH/km)	Current-Carrying Capacity at 30° C * in air (A)	Short circuit current at 1 sec Max. (kA)
	DC Resistance at 20° C Max. (Ω/km)	AC Resistance at 70° C Max. (Ω/km)	Insulation Resistance at 70° C Min. (M.Ω.km)			
1.5	12.1	14.478	0.010	0.329	19	0.17
2.5	7.41	8.866	0.009	0.318	25	0.29
4	4.61	5.516	0.0077	0.297	34	0.46
6	3.08	3.685	0.0065	0.281	44	0.69
10	1.83	2.190	0.0065	0.278	61	1.15
16	1.15	1.376	0.0052	0.255	82	1.84
25	0.727	0.870	0.0050	0.252	108	2.88
35	0.524	0.627	0.0044	0.244	134	4.03

* Further information about rating factor for certain cable arrangement can be found on supplementary technical information

KMI
Wire and Cable

kabelmetal
INDONESIA

SMK3
PER.05/MEN/1096
ISO 9001
QUALITY ASSURED FIRM

ISO 14001
ENVIRONMENTAL SYSTEM
OHSAS 18001
HEALTH & SAFETY MANAGEMENT SYSTEM

www.kmi.co.id
PT KMI Wire and Cable Tbk reserves the right to change the data content without prior notification

12201-02 Rev. 1.0 / 2013

NYM 3 x (1.5 - 35) mm² 300/500 V Cu / PVC / PVC

(Copper Conductor, PVC Insulated, PVC Sheathed)
Standard Specification : SNI 04-6629.4 : 2006

Construction Data

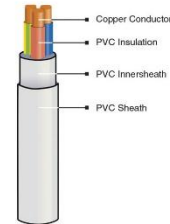
Nom. Cross Section Area	Overall Diameter	Cable Weight
	approx. mm	approx. kg/km
1.5	10.0	136
2.5	11.0	186
4	12.0	246
6	13.5	335
10	17.0	527
16	20.5	816
25	24.5	1,229
35	27.5	1,601

APPLICATION :

For building wire installed in conduit in dry location and interwiring in switch board and control panel, inherently flame retardant in compliance with IEC 60332-1.

Special Features on Request

- Tinned Coated Copper Conductor
- Fire Resistance
- Oil Resistance
- Flame Retardant Cat. A, B, C
- Heat Resistance
- Nylon Coated



Note :

Conductor Shaped

1.5 - 10 sqmm supplied in solid (re) or non compacted circular stranded (rm) conductor shape
16 - 35 sqmm supplied in non compacted circular stranded (rm) conductor shape

Tinned Coated Copper Conductor

Electrical properties for tinned coated copper conductor will be submitted upon request

Standard Packing

1.5 - 4 sqmm supplied in coil @ 100 m or in wooden drum @ 1000/2000 m
6 - 35 sqmm supplied in wooden drum @ 1000 m
Length tolerance per drum ±2%.

Electrical Data

Nom. Cross Sect. (mm ²)	Conductor		Insulation	Inductance (mH/km)	Current-Carrying Capacity at 30° C * in air (A)	Short circuit current at 1 sec (kA)
	DC Resistance at 20° C Max. (Ω/km)	AC Resistance at 70° C Max. (Ω/km)	Insulation Resistance at 70° C Min. (M.Ω.km)			
1.5	12.1	14.478	0.010	0.329	19	0.17
2.5	7.41	8.866	0.009	0.318	25	0.29
4	4.61	5.516	0.0077	0.297	34	0.46
6	3.08	3.685	0.0065	0.281	44	0.69
10	1.83	2.190	0.0065	0.278	61	1.15
16	1.15	1.376	0.0052	0.255	82	1.84
25	0.727	0.870	0.0050	0.252	108	2.88
35	0.524	0.627	0.0044	0.244	134	4.03

* Further information about rating factor for certain cable arrangement can be found on supplementary technical information

KMI
Wire and Cable

kabelmetal
INDONESIA

SMK3
PER.05/MEN/1096
ISO 9001
QUALITY ASSURED FIRM

ISO 14001
ENVIRONMENTAL SYSTEM
OHSAS 18001
HEALTH & SAFETY MANAGEMENT SYSTEM

www.kmi.co.id
PT KMI Wire and Cable Tbk reserves the right to change the data content without prior notification

12201-03 Rev. 1.0 / 2013

NYY 4 x (1.5-400) mm² 0.6/1 kV

Cu / PVC / PVC

(Copper Conductor, PVC Insulated, PVC Sheathed)

Standard Specification : IEC 60502-1

Construction Data

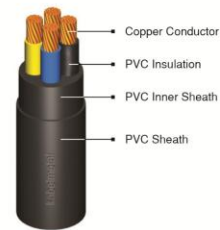
Nom. Cross Section Area	Overall Diameter	Cable Weight
	approx.	approx.
mm ²	mm	kg/km
1.5	13.8	259
2.5	15.0	324
4	17.3	453
6	18.7	563
10	21.5	794
16	23.5	1,083
25	27.5	1,558
35	30.0	2,018
50	35.5	2,466
70	39.0	3,334
95	44.5	4,491
120	48.5	5,504
150	54.5	6,787
185	59.0	8,392
240	66.0	10,818
300	72.5	13,326
400	82.5	16,969

Application :

Power cable : Indoors, cable trunking, outdoors and buried in the ground, for power stations, industry and switchgear as well as for urban supply networks, if mechanical damage is unlikely.

Special Features on Request :

- Fire Resistance
- Oil Resistance
- UV Resistance
- Flame Retardant Cat. A, B, C
- Flame Retardant Non Category
- Heat Resistance
- Anti Termite
- Anti Rodent
- Low Smoke Zero Halogen
- Nylon Coated



Note :

Conductor Shape

- 1.5 - 10 sqmm supplied in solid (re) or non compacted circular stranded (m) conductor shape
- 16 sqmm supplied in non compacted circular stranded (m) conductor shape
- 25 - 35 sqmm supplied in compacted circular stranded (cm) conductor shape
- 50 - 400 sqmm supplied in sector shaped stranded (sm) conductor

Standard Packing

- 1.5 - 70 sqmm supplied in wooden drum @ 1000 m
- 95 - 400 sqmm will be supplied in wooden drum on available length
- Length Tolerance per drum ± 2%

Electrical Data

Nom. Cross Sect. (mm ²)	Conductor		Inductance (mH/km)	Current - Carrying Capacity at 30°C *		Short circuit current at 1 sec (kA)
	DC Resistance at 20°C (Ω/km)	AC Resistance at 70°C (Ω/km)		in air (A)	in ground (A)	
1.5	12.1	14.478	0.328	22	27	0.17
2.5	7.41	8.866	0.304	29	35	0.29
4	4.61	5.516	0.303	39	46	0.46
6	3.08	3.685	0.288	50	57	0.69
10	1.83	2.190	0.269	68	77	1.15
16	1.15	1.376	0.255	90	99	1.84
25	0.727	0.870	0.255	121	128	2.88
35	0.524	0.627	0.246	149	154	4.03
50	0.387	0.464	0.247	173	173	5.75
70	0.268	0.321	0.238	215	212	8.05
95	0.193	0.232	0.238	266	255	10.93
120	0.153	0.184	0.233	308	289	13.80
150	0.124	0.150	0.233	357	327	17.25
185	0.0991	0.121	0.233	405	366	21.28
240	0.0754	0.093	0.232	482	425	27.60
300	0.0601	0.075	0.231	552	479	34.50
400	0.0470	0.060	0.229	643	545	41.20

* Further information about rating factor for certain cable arrangement can be found on supplementary technical information



www.kmi.co.id

PT KMI Wire and Cable Tbk reserves the right to change the data content without prior notification

14233-04 Rev. 2.0 / 2009

Product		Wattage (W) ↕	Luminous Flux (lm) ↕	Color Temperature (K) ↕
<input type="checkbox"/>  BN124C LED41S/840 PSU ELB3 TW1 L1200 910500465175		42	4100	4000
<input type="checkbox"/>  BN124C LED64S/840 PSU ELB3 TW1 L1500 910500465177		60	6400	4000
<input type="checkbox"/>  BN124C LED21S/840 PSU TW1 L600 910503910277		19	2100	4000
<input type="checkbox"/>  BN124C LED19S/830 PSU TW1 L600 910503910278		19	1900	3000
<input type="checkbox"/>  BN124C LED41S/840 PSU TW1 L1200 910503910279		38	4100	4000
<input type="checkbox"/>  DN003B LED9/CW D125 RD 911401597531		11	900	6500
<input type="checkbox"/>  DN003B LED12/WW D150 RD 911401597631		15	1200	3000
<input type="checkbox"/>  DN003B LED12/NW D150 RD 911401597731		15	1200	4000
<input type="checkbox"/>  DN003B LED12/CW D150 RD 911401597831		15	1200	6500
<input type="checkbox"/>  DN003B LED15/WW D175 RD 911401597931		18	1500	3000

LED tube

MASTER LEDtube

Philips MASTER LEDtubes have 100% safe, hasslefree installation with a simple lamp-for-lamp replacement. We have the widest range on the market, with standard 1200mm and 1500mm tubes along with special 600, 900 and 1800m versions. Each replaces a different fluorescent type, ensuring a light for every application.



Our EM/mains and InstantFit HF tubes fit straight into existing luminaires. Our InstantFit range has best in class performance with even more existing ballasts (600, 1200 and 1500mm InstantFit version lists are regularly updated. Building on the latest InstantFit technology innovation Philips Master LEDtubes can now offer dimming functionality for defined tube/ballast combination. Please refer to the site www.philips.com/ledtube for the latest information about ballast compatibility.



MASTER LEDtube T5



Product type	LED	Lumen output	Operation	Dimmable	Rotatable end cap	Beam angle	CRI	Color temp.	Lifetime	Energy-label	Dimensions	EOC 1 pcs (C)*
	W	lm	lm/W			°		K	Hrs.		H x W	8718696
MASTER LEDtube (HF)												
600mm HE 8W 830 T5 NEW	8	1000	HF	No	No	200	83	3000	50,000	A+	21 x 600	74323200
600mm HE 8W 840 T5 NEW	8	1050	HF	No	No	200	83	4000	50,000	A+	21 x 600	74325600
600mm HE 8W 865 T5 NEW	8	1050	HF	No	No	200	83	6500	50,000	A+	21 x 600	74327000
1200mm HE 16.5W 830 T5 NEW	16.5	2300	HF	No	No	200	83	3000	50,000	A+	21 x 1200	74329400
1200mm HE 16.5W 840 T5 NEW	16.5	2500	HF	No	No	200	83	4000	50,000	A++	21 x 1200	74331700
1200mm HE 16.5W 865 T5 NEW	16.5	2500	HF	No	No	200	83	6500	50,000	A++	21 x 1200	74333100
1500mm HE 20W 830 T5 NEW	20	2800	HF	No	No	200	83	3000	50,000	A+	21 x 1500	74335500
1500mm HE 20W 840 T5 NEW	20	3000	HF	No	No	200	83	4000	50,000	A++	21 x 1500	74337900
1500mm HE 20W 865 T5 NEW	20	3000	HF	No	No	200	83	6500	50,000	A++	21 x 1500	74339300
1500mm UO 36W 830 T5 Instant Fit	36	5200	HF	No	No	160	80	3000	50,000	A++	21 x 1500	70599500
1500mm UO 36W 840 T5 Instant Fit	36	5600	HF	No	No	160	80	4000	50,000	A++	21 x 1500	70603900
1500mm UO 36W 865 T5 Instant Fit	36	5600	HF	No	No	160	80	3000	50,000	A++	21 x 1500	70605300
1500mm HO 26W 830 T5 Instant Fit	26	3700	HF	No	No	160	83	3000	50,000	A+	21 x 1500	68552500
1500mm HO 26W 840 T5 Instant Fit	26	3900	HF	No	No	160	83	3000	50,000	A++	21 x 1500	68554900
1500mm HO 26W 865 T5 Instant Fit	26	3900	HF	No	No	160	83	6500	50,000	A++	21 x 1500	68556300
1200mm HO 26W 830 T5 Instant Fit	26	3700	HF	No	No	160	80	3000	50,000	A+	21 x 1200	70527800
1200mm HO 26W 840 T5 Instant Fit	26	3900	HF	No	No	160	80	6500	50,000	A++	21 x 1200	70529200
1200mm HO 26W 865 T5 Instant Fit	26	3900	HF	No	No	160	80	6500	50,000	A++	21 x 1200	70531500

MASTER LEDtube T8 food



Product type		LED	Lumen output	Operation	Dimmable	Rotatable end cap	Beam angle	CRI	Color temp.	Lifetime	Energy-label	Dimensions	EOC 1 pcs (C)*
		W	lm	lm/W			°		K	Hrs.		H x W	8718696
1	MASTER LEDtube (EM)												
	1200mm 12W833 T8 food	12	1000	EM	No	Yes	160	83	3300	50,000	A+	28 x 1200	76393300
	1500mm 20W833 T8 food	20	1680	EM	No	Yes	160	83	3300	50,000	A+	28 x 1500	76395700
	900mm 8.5W833 T8 food	8.5	750	EM	No	Yes	160	83	3300	50,000	A+	28 x 900	76391900
2	MASTER LEDtube (HF)												
	1200mm 16.5W833 T8 food	16.5	1000	HF	No	Yes	160	83	3300	50,000	B	28 x 1200	56616900

MASTER LEDtube T8 High Output



Product type		LED	Lumen output	Operation	Dimmable	Rotatable end cap	Beam angle	CRI	Color temp.	Lifetime	Energy-label	Dimensions	EOC 1 pcs (C)*
		W	lm	lm/W			°		K	Hrs.		H x W	8718696
1	MASTER LEDtube (EM)												
	600mm HO 8W 830 T8	8	1000	EM & Mains	No	Yes	160	83	3000	50,000	A++	28 x 600	69747400
	600mm HO 8W 840 T8	8	1050	EM & Mains	No	Yes	160	83	4000	50,000	A++	28 x 600	69749800
	600mm HO 8W 865 T8	8	1050	EM & Mains	No	Yes	160	83	6500	50,000	A++	28 x 600	69751100
	900mm HO 12W 840 T8	12	1575	EM & Mains	No	Yes	160	83	4000	50,000	A+	28 x 900	68708600
	900mm HO 12W 865 T8	12	1575	EM & Mains	No	Yes	160	83	6500	50,000	A++	28 x 900	68710900
	1200mm HO 14W 830 T8	14	2000	EM & Mains	No	Yes	160	83	3000	50,000	A++	28 x 1200	68718500
	1200mm HO 14W 840 T8	14	2100	EM & Mains	No	Yes	160	83	4000	50,000	A+	28 x 1200	68720800
	1200mm HO 14W 865 T8	14	2100	EM & Mains	No	Yes	160	83	6500	50,000	A++	28 x 1200	68722200
	1500mm HO 20W 830 T8	20	2900	EM & Mains	No	Yes	160	83	3000	50,000	A++	28 x 1500	68712300
	1500mm HO 20W 840 T8	20	3100	EM & Mains	No	Yes	160	83	4000	50,000	A++	28 x 1500	68714700
	1500mm HO 20W 865 T8	20	3100	EM & Mains	No	Yes	160	83	6500	50,000	A++	28 x 1500	68716100
2	MASTER LEDtube (HF)												
	600mm 10.5W 830 T8 Instant Fit	10.5	1000	HF	Yes	Yes	160	83	3000	50,000	A+	28 x 600	5965900
	600mm 10.5W 840 T8 Instant Fit	10.5	1050	HF	Yes	Yes	160	83	4000	50,000	A+	28 x 600	5967300
	600mm 10.5W 865 T8 Instant Fit	10.5	1050	HF	Yes	Yes	160	83	6500	50,000	A+	28 x 600	5969700
	1200mm HO 14W 830 T8 Instant Fit	14	2000	HF	Yes	Yes	160	83	3000	50,000	A+	28 x 1200	68752900
	1200mm HO 14W 840 T8 Instant Fit	14	2100	HF	Yes	Yes	160	83	4000	50,000	A++	28 x 1200	68748200
	1200mm HO 14W 865 T8 Instant Fit	14	2100	HF	Yes	Yes	160	83	6500	50,000	A++	28 x 1200	68750500
	1500mm HO 20W 830 T8 Instant Fit	20	2900	HF	Yes	Yes	160	83	3000	50,000	A+	28 x 1500	68758100
	1500mm HO 20W 840 T8 Instant Fit	20	3100	HF	Yes	Yes	160	83	4000	50,000	A++	28 x 1500	68754300
	1500mm HO 20W 865 T8 Instant Fit	20	3100	HF	Yes	Yes	160	83	6500	50,000	A++	28 x 1500	68756700