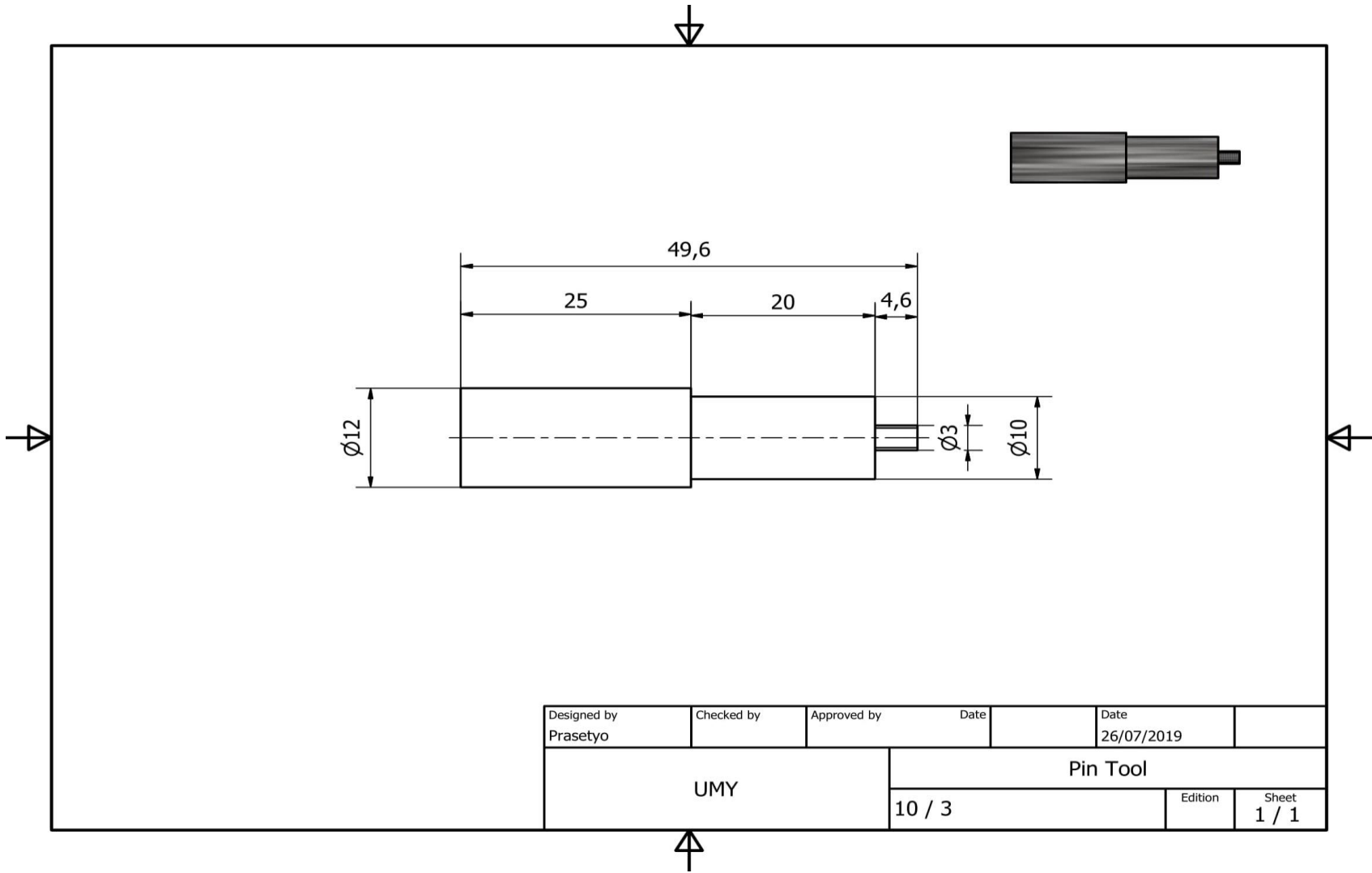
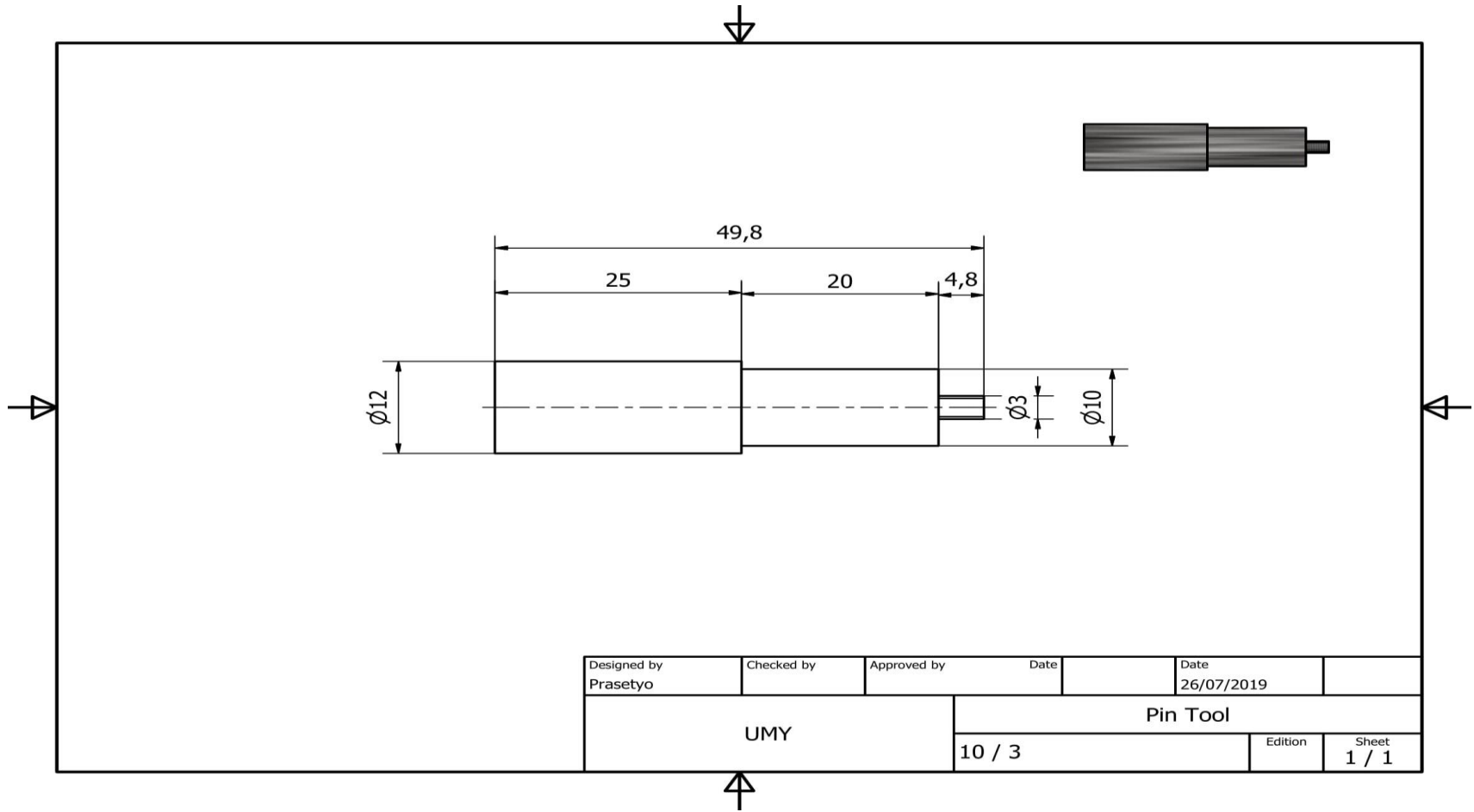


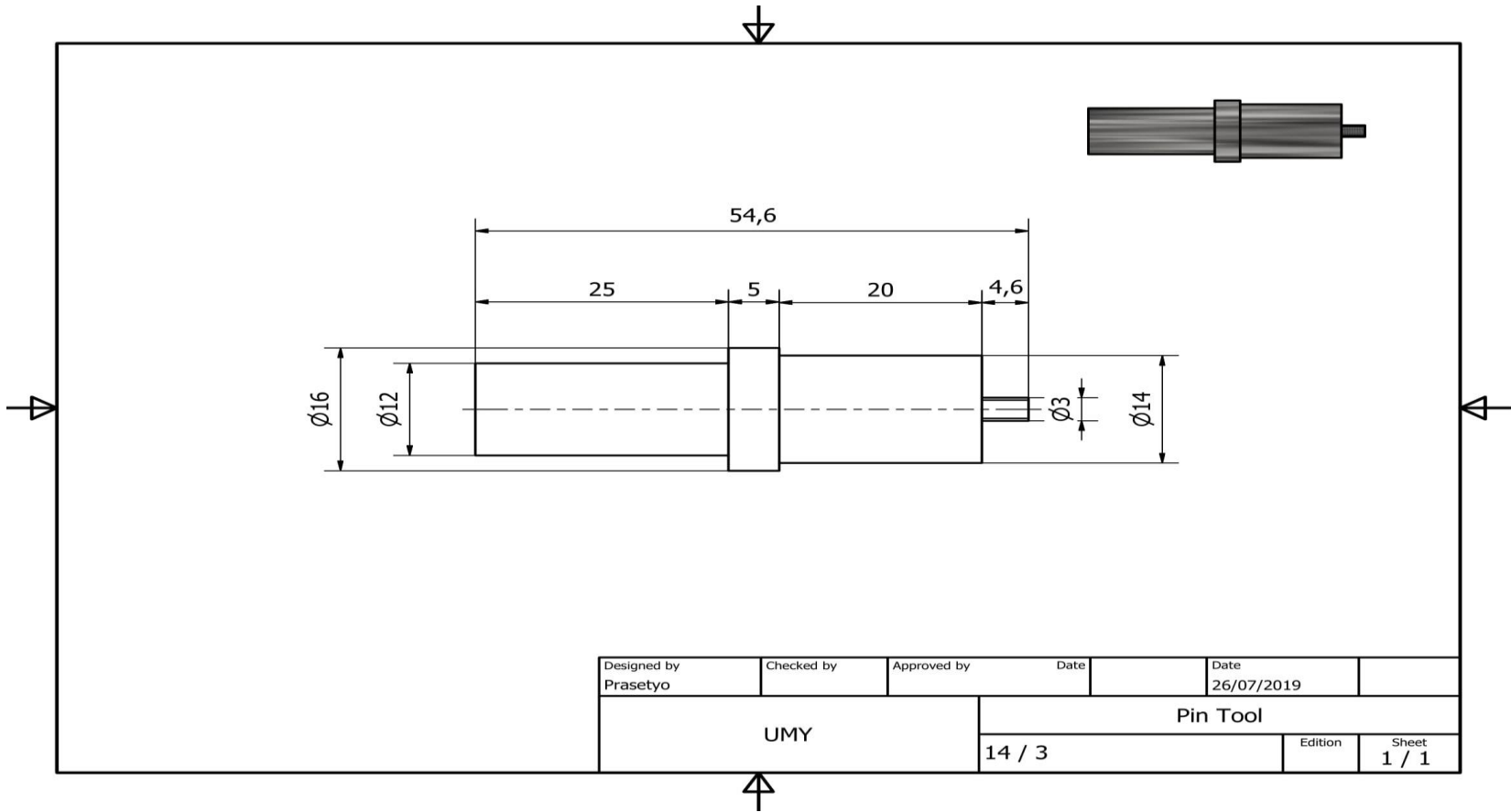
LAMPIRAN



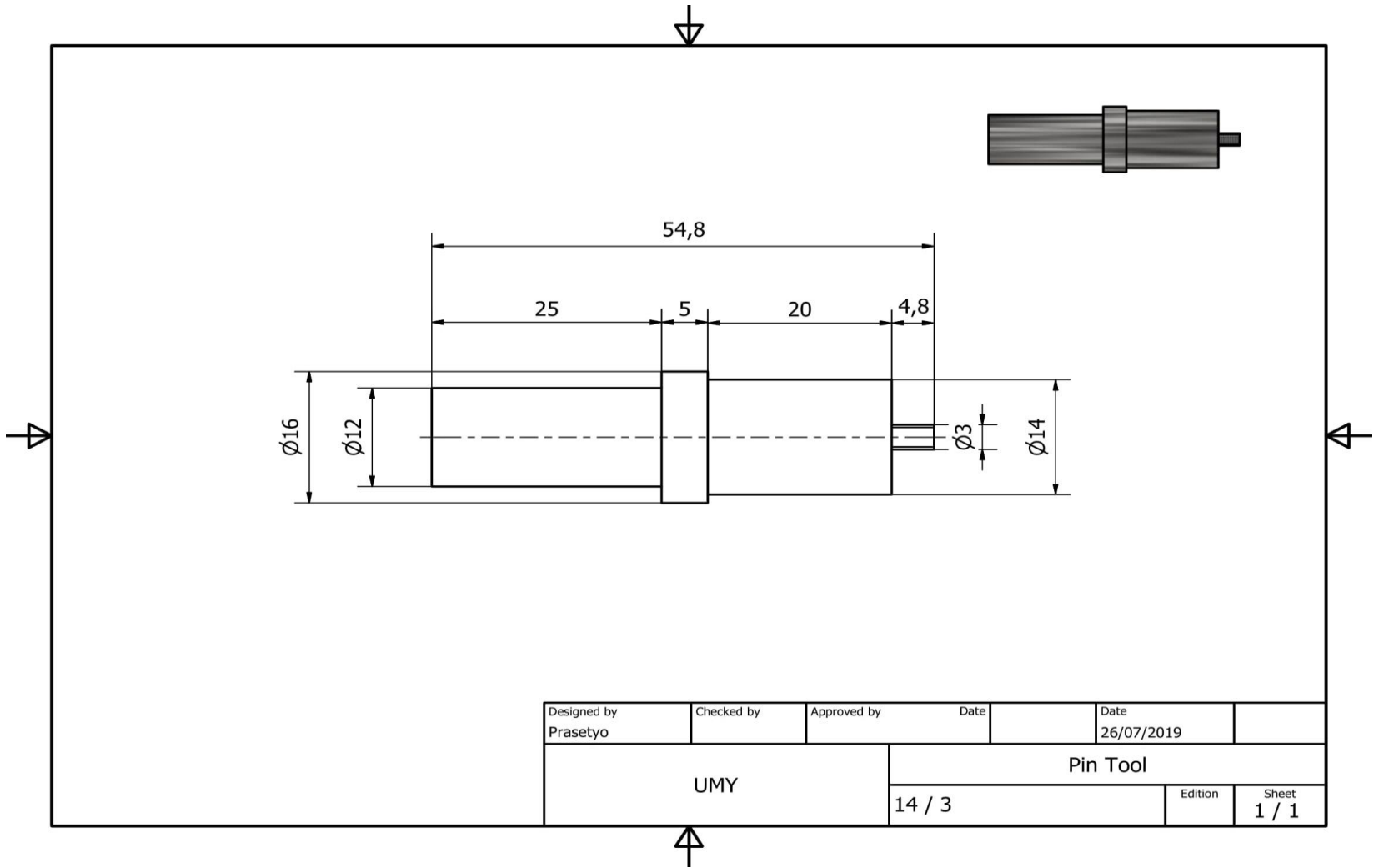
Designed by Prasetyo	Checked by	Approved by	Date	Date 26/07/2019	
UMY			Pin Tool		
			10 / 3	Edition	Sheet 1 / 1



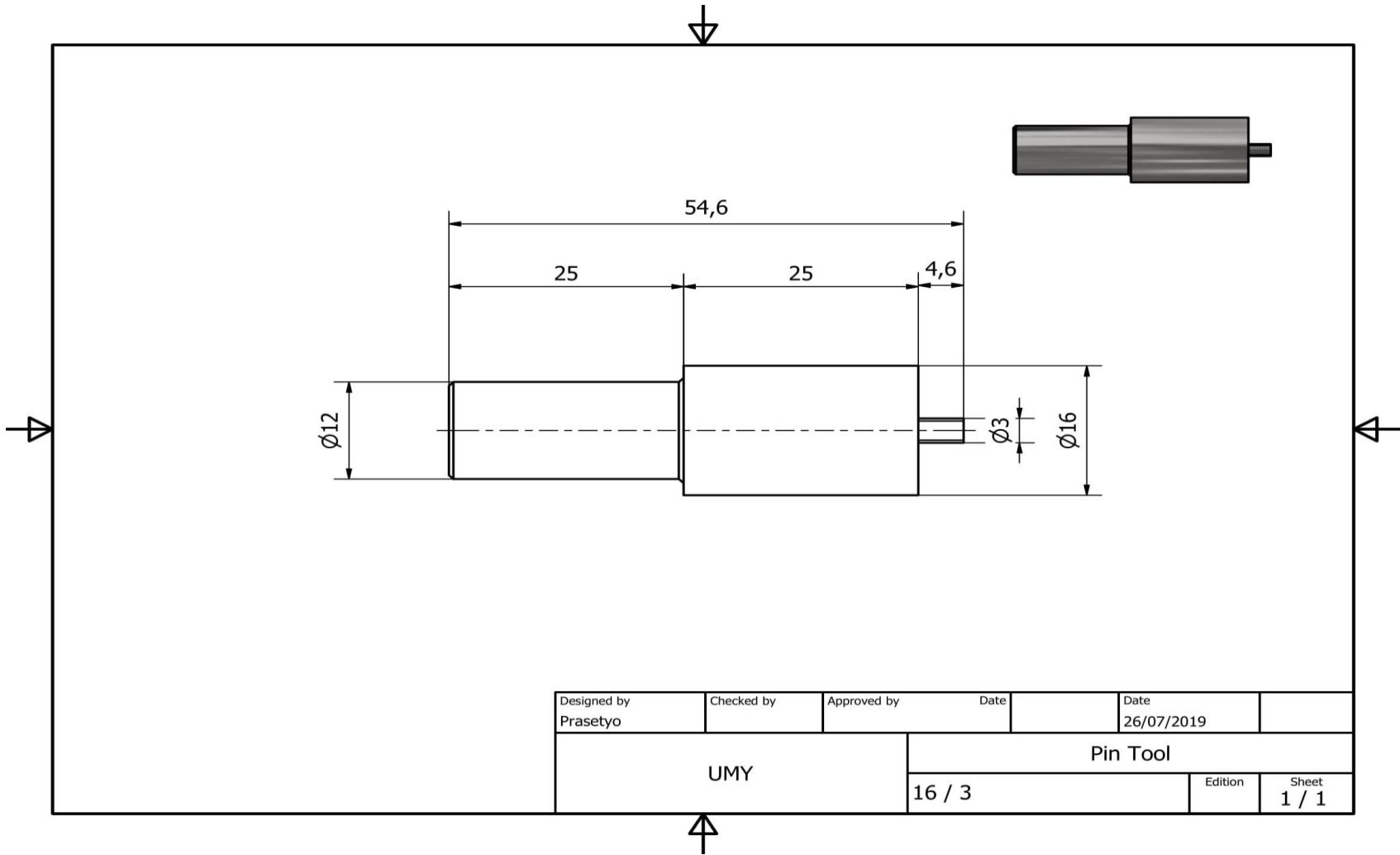
Designed by Prasetyo	Checked by	Approved by	Date	Date 26/07/2019
UMY		Pin Tool		
		10 / 3	Edition	Sheet 1 / 1



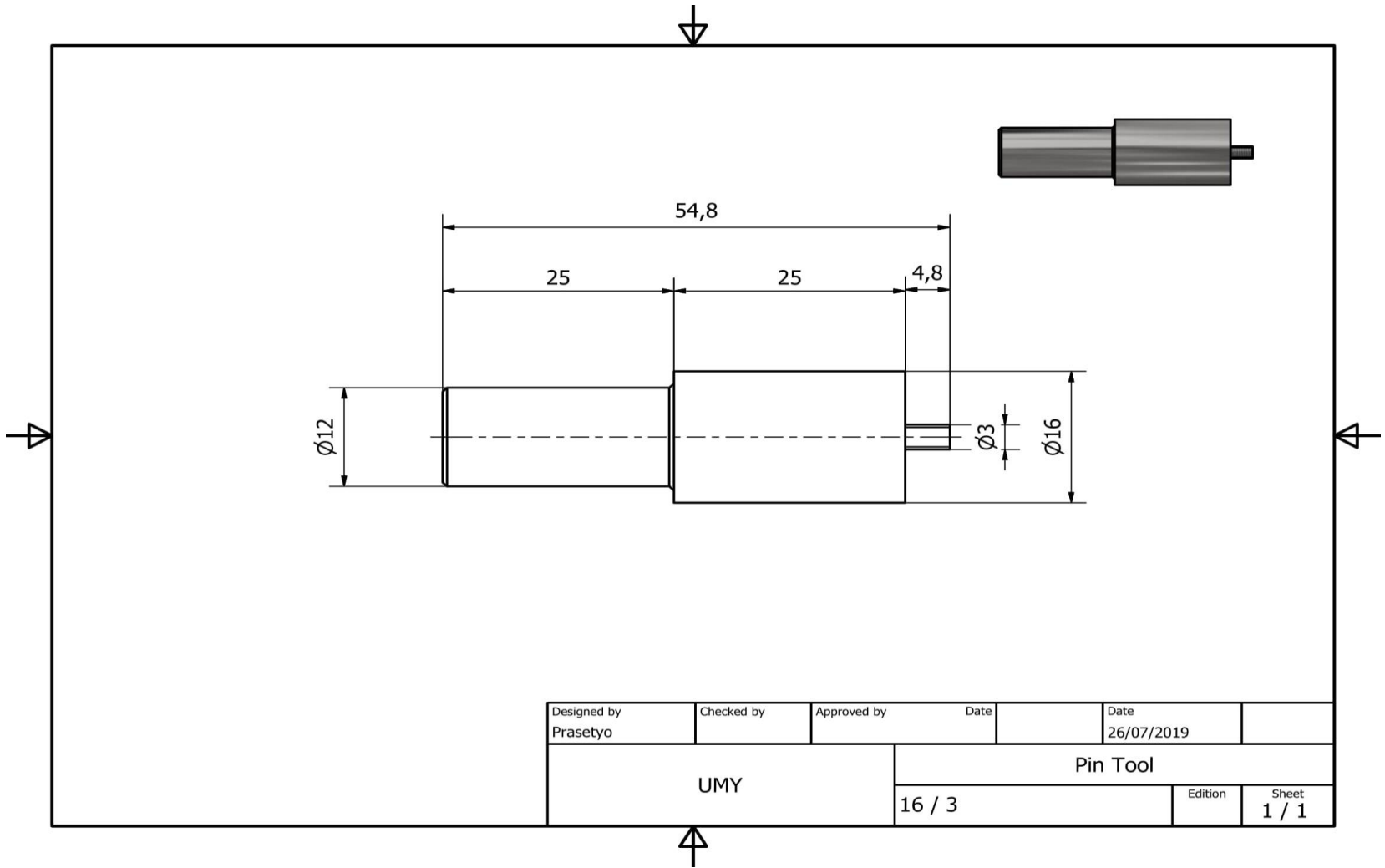
Designed by Prasetyo	Checked by	Approved by	Date	Date 26/07/2019
UMY			Pin Tool	
14 / 3			Edition	Sheet 1 / 1



Designed by Prasetyo	Checked by	Approved by	Date	Date 26/07/2019	
UMY			Pin Tool		
14 / 3			Edition	Sheet 1 / 1	



Designed by Prasetyo	Checked by	Approved by	Date	Date 26/07/2019
UMY			Pin Tool	
			16 / 3	Edition Sheet 1 / 1



Designed by Prasetyo	Checked by	Approved by	Date	Date 26/07/2019	
UMY			Pin Tool		
16 / 3			Edition	Sheet 1 / 1	



POLITEKNIK ATMI SURAKARTA

Kampus I : Jl. Mojo No. 1, Karangasem, Laweyan, Surakarta 57145. Phone : +62 271 714466 • Fax : +62 271 714390
Kampus II : Jl. Adi Sucipto Km 9.5, Blulukon, Colomadu, Karanganyar 57174. Phone: +62 271 7686220
E-mail: politeknik@atmi.ac.id • Website: <http://www.atmi.ac.id>
Jawa Tengah, Indonesia

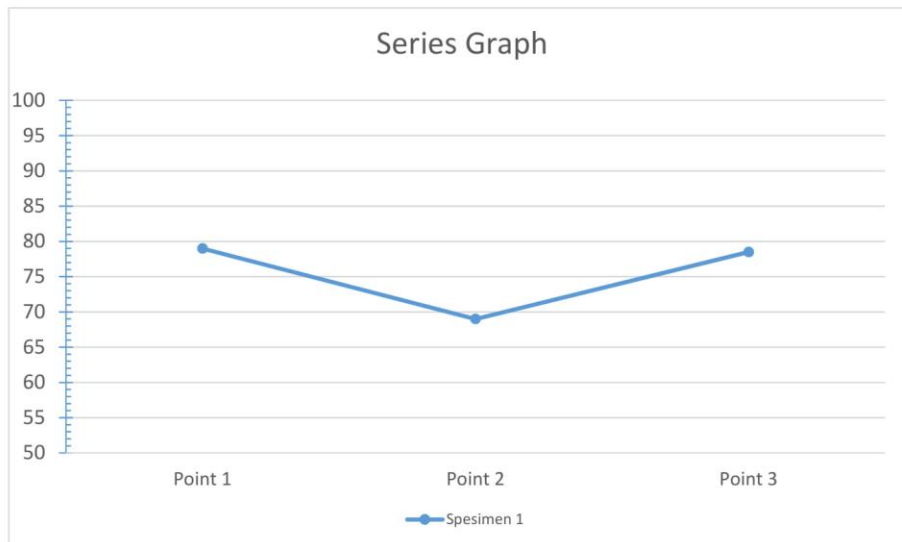


Hardness Test Report

Customer : Prasetyo
Material : Polycarbonate
Note : 10/4,6
Standart : Shore D

Result

	Point 1	Point 2	Point 3
Spesimen 1	79	69	78,5



Statistics:

Series	Shore D
x	75,50
s	9,75
v [%]	12,91



POLITEKNIK ATMI SURAKARTA

Kampus I : Jl. Mojo No. 1, Karangasem, Laweyan, Surakarta 57145. Phone : +62 271 714466 • Fax : +62 271 714390
Kampus II : Jl. Adi Sucipto Km 9.5, Blulukon, Colomadu, Karanganyar 57174. Phone: +62 271 7686220
E-mail: politeknik@atmi.ac.id • Website: <http://www.atmi.ac.id>
Jawa Tengah, Indonesia

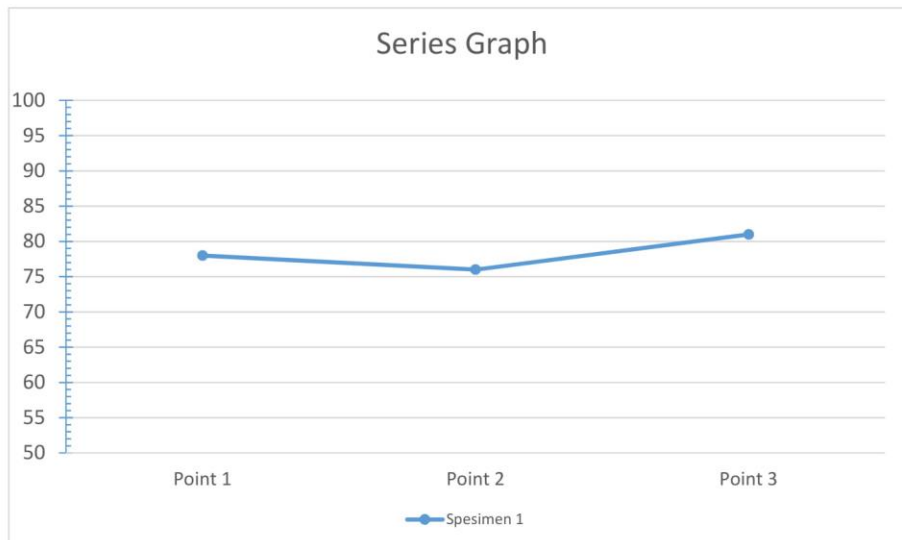


Hardness Test Report

Customer : Prasetyo
Material : Polycarbonate
Note : 10/4,8
Standart : Shore D

Result

	Point 1	Point 2	Point 3
Spesimen 1	78	76	81



Statistics:

Series	Shore D
x	78,33
s	3,5
v [%]	4,47



POLITEKNIK ATMI SURAKARTA

Kampus I : Jl. Mojo No. 1, Karangasem, Laweyan, Surakarta 57145. Phone : +62 271 714466 • Fax : +62 271 714390
Kampus II : Jl. Adi Sucipto Km 9.5, Blulukan, Colomadu, Karanganyar 57174. Phone: +62 271 7686220
E-mail: politeknik@atmi.ac.id • Website: <http://www.atmi.ac.id>
Jawa Tengah, Indonesia

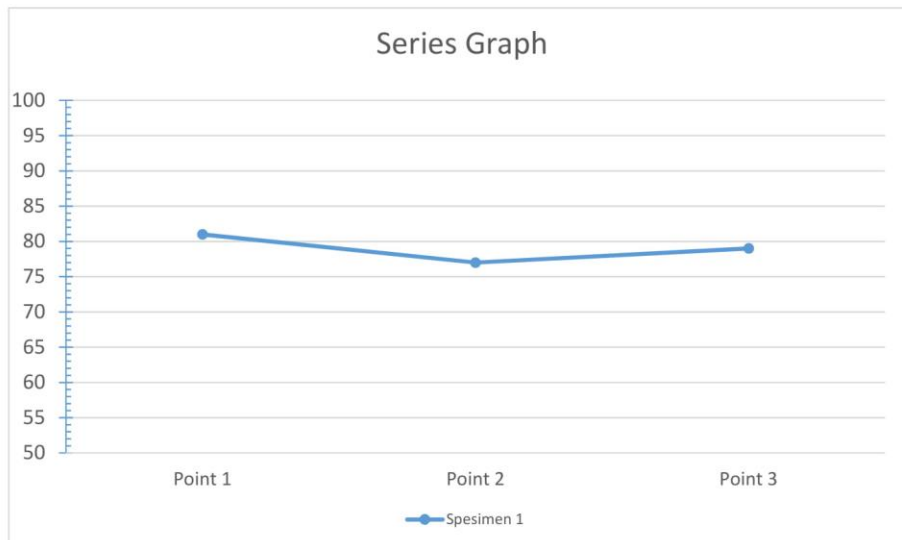


Hardness Test Report

Customer : Prasetyo
Material : Polycarbonate
Note : 14/4,6
Standart : Shore D

Result

	Point 1	Point 2	Point 3
Spesimen 1	81	77	79



Statistics:

Series	Shore D
x	79,00
s	3
v [%]	3,80



POLITEKNIK ATMI SURAKARTA

Kampus I : Jl. Mojo No. 1, Karangasem, Laweyan, Surakarta 57145. Phone : +62 271 714466 • Fax : +62 271 714390
Kampus II : Jl. Adi Sucipto Km 9.5, Blulukon, Colomadu, Karanganyar 57174. Phone: +62 271 7686220
E-mail: politeknik@atmi.ac.id • Website: <http://www.atmi.ac.id>
Jawa Tengah, Indonesia

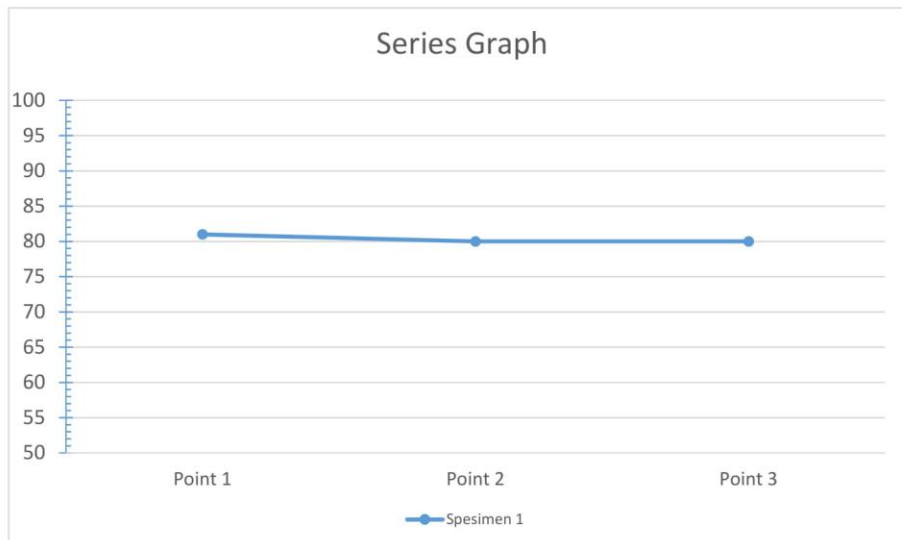


Hardness Test Report

Customer : Prasetyo
Material : Polycarbonate
Note : 14/4,8
Standart : Shore D

Result

	Point 1	Point 2	Point 3
Spesimen 1	81	80	80



Statistics:

Series	Shore D
x	80,33
s	0,5
v [%]	0,62



POLITEKNIK ATMI SURAKARTA

Kampus I : Jl. Mojo No. 1, Karangasem, Laweyan, Surakarta 57145. Phone : +62 271 714466 • Fax : +62 271 714390
Kampus II : Jl. Adi Sucipto Km 9.5, Blulukon, Colomadu, Karanganyar 57174. Phone: +62 271 7686220
E-mail: politeknik@atmi.ac.id • Website: <http://www.atmi.ac.id>
Jawa Tengah, Indonesia

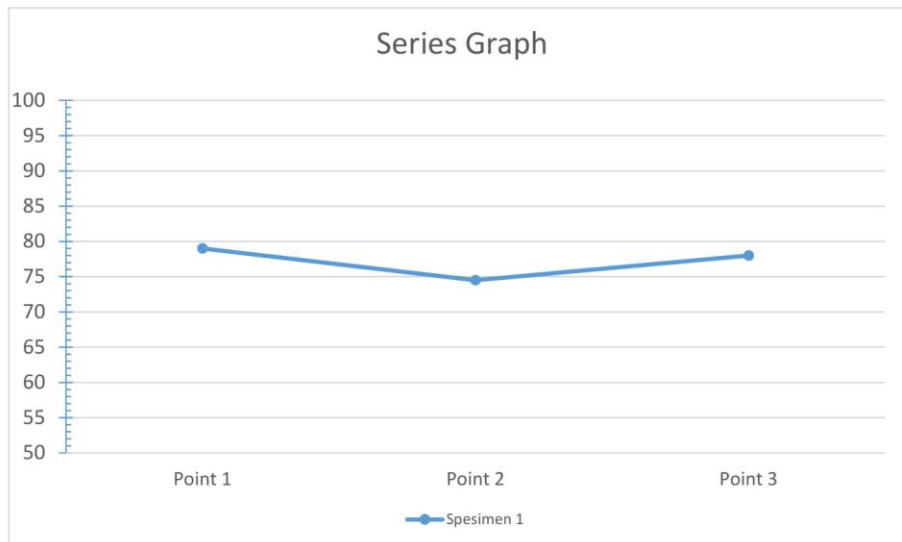


Hardness Test Report

Customer : Prasetyo
Material : Polycarbonate
Note : 16/4,6
Standart : Shore D

Result

	Point 1	Point 2	Point 3
Spesimen 1	79	74,5	78



Statistics:

Series	Shore D
x	77,17
s	4
v [%]	5,18



POLITEKNIK ATMI SURAKARTA

Kampus I : Jl. Mojo No. 1, Karangasem, Laweyan, Surakarta 57145. Phone : +62 271 714466 • Fax : +62 271 714390
Kampus II : Jl. Adi Sucipto Km 9.5, Blulukon, Colomadu, Karanganyar 57174. Phone: +62 271 7686220
E-mail: politeknik@atmi.ac.id • Website: <http://www.atmi.ac.id>
Jawa Tengah, Indonesia

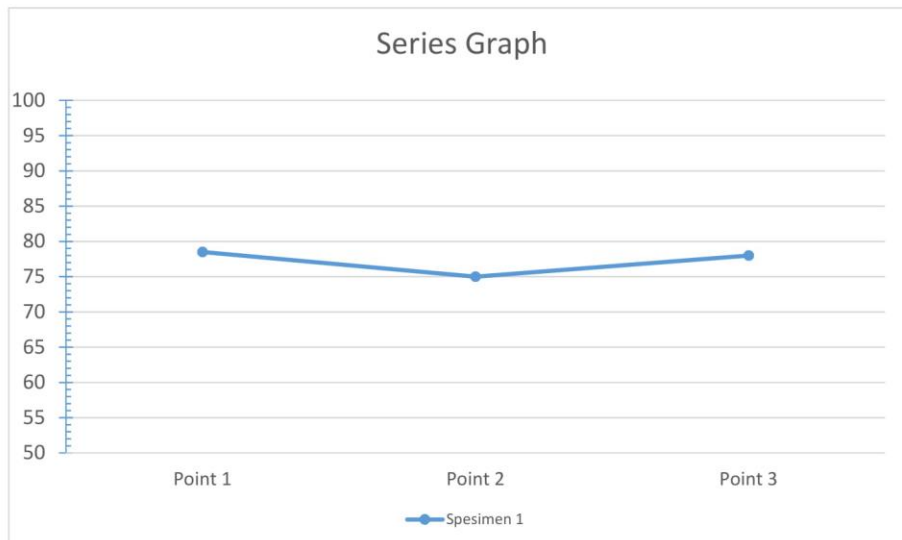


Hardness Test Report

Customer : Prasetyo
Material : Polycarbonate
Note : 16/4,8
Standart : Shore D

Result

	Point 1	Point 2	Point 3
Spesimen 1	78,5	75	78



Statistics:

Series	Shore D
x	77,17
s	3,25
v [%]	4,21

KUAT TARIK

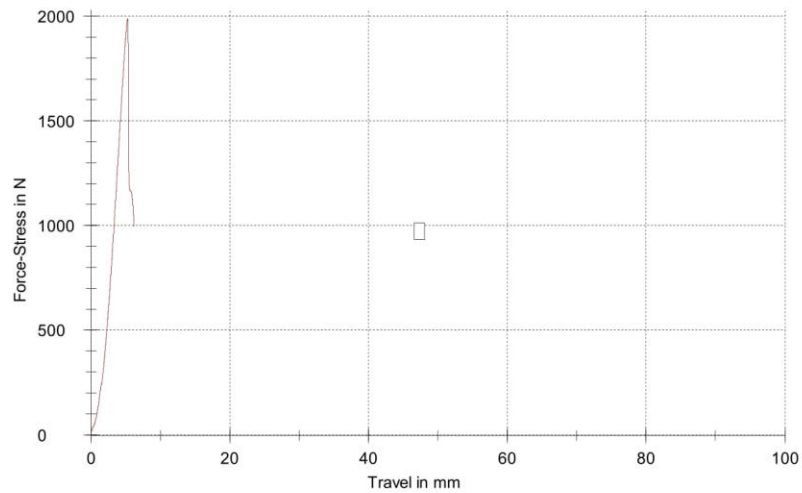
Parameter table:

Headline	: KUAT TARIK	Evaluat. method	: M (Automatic A, B or C)
Customer	: 1571/LUPKKP-PLASTIK //19	Specimen holders:	:
Tester	: L.TRIYONO + SUPRIYANTO	Extensometer	:
Material	: POLYCARBONATE	Load cell	:
Test standard	: ASTM D 638		

Results:

Legends	Nr	Fmax Lm kgf	Measurement travel end mm
	1	202,806	5,59

Series graph:



Statistics:




Series	Fmax Lm kgf	Measurement travel end mm
n = 1		
x	202,806	5,59
s	-	-
v	-	-

KUAT TARIK (10/46)

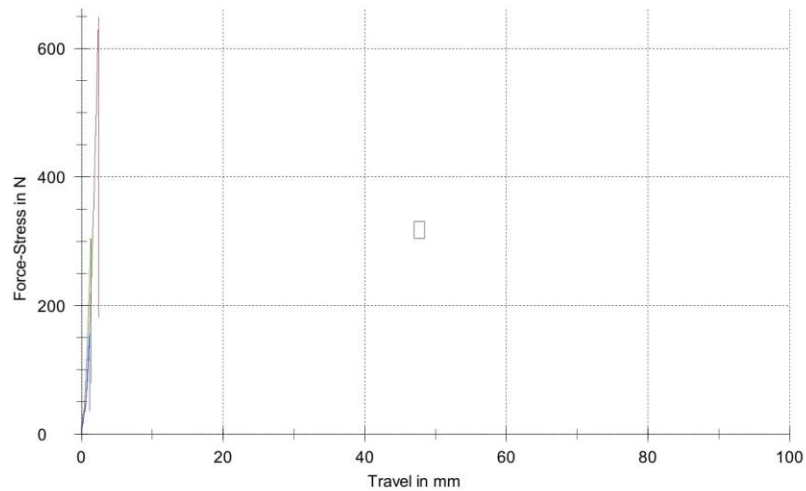
Parameter table:

Headline	: KUAT TARIK (10/46)	Evaluat. method	: M (Automatic A, B or C)
Customer	: 928/LUPKPP-PLASTIK/IV/19	Specimen holders	:
Tester	: L.TRIYONO	Extensometer	:
Material	: POLICARBONATE	Load cell	:
Test standard	: ASTM D 638		

Results:

Legends	Nr	Fmax Lm kgf	Measurement travel end mm
	1	66,185	2,43
	2	30,995	1,35
	3	15,971	1,18

Series graph:



Statistics:

Series n = 3	Fmax Lm kgf	Measurement travel end mm
x	37,717	1,65
s	25,773	0,68
v	68,33	41,01

KUAT TARIK (10/48)

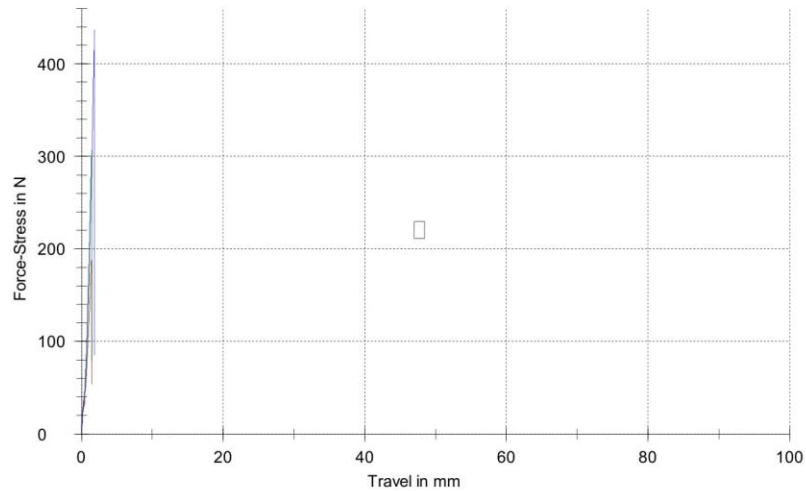
Parameter table:

Headline	: KUAT TARIK (10/48)	Evaluat. method	: M (Automatic A, B or C)
Customer	: 928/LUPKPP-PLASTIK/IV/19	Specimen holders	:
Tester	: L.TRIYONO	Extensometer	:
Material	: POLICARBONATE	Load cell	:
Test standard	: ASTM D 638		

Results:

Legends	Nr	Fmax Lm kgf	Measurement travel end mm
	1	19,214	1,47
	2	31,317	1,44
	3	44,545	1,84

Series graph:



Statistics:




Series n = 3	Fmax Lm kgf	Measurement travel end mm
x	31,692	1,58
s	12,670	0,22
v	39,98	14,04

KUAT TARIK (14/46)

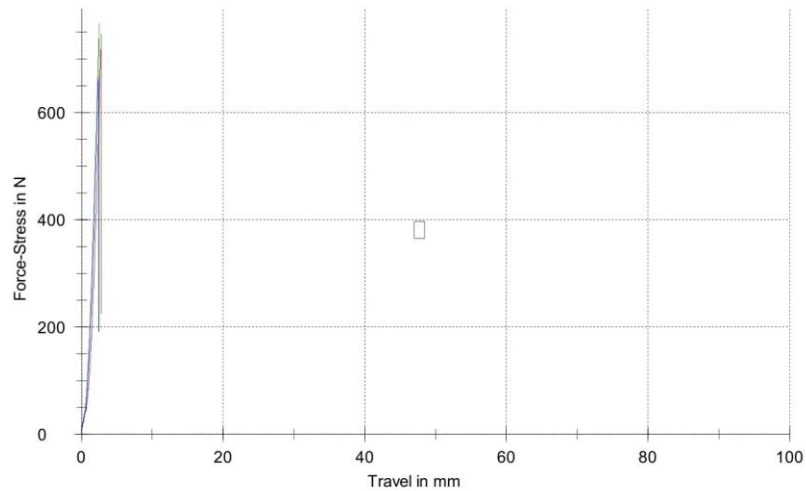
Parameter table:

Headline	: KUAT TARIK (14/46)	Evaluat. method	: M (Automatic A, B or C)
Customer	: 929/LUPKPP-PLASTIK/IV/19	Specimen holders	:
Tester	: L.TRIYONO	Extensometer	:
Material	: POLICARBONATE	Load cell	:
Test standard	: ASTM D 638		

Results:

Legends	Nr	Fmax Lm kgf	Measurement travel end mm
	1	76,196	2,81
	2	78,195	2,52
	3	68,038	2,40

Series graph:



Statistics:

Series n = 3	Fmax Lm kgf	Measurement travel end mm
x	74,143	2,58
s	5,380	0,21
v	7,26	8,21

KUAT TARIK (14/48)

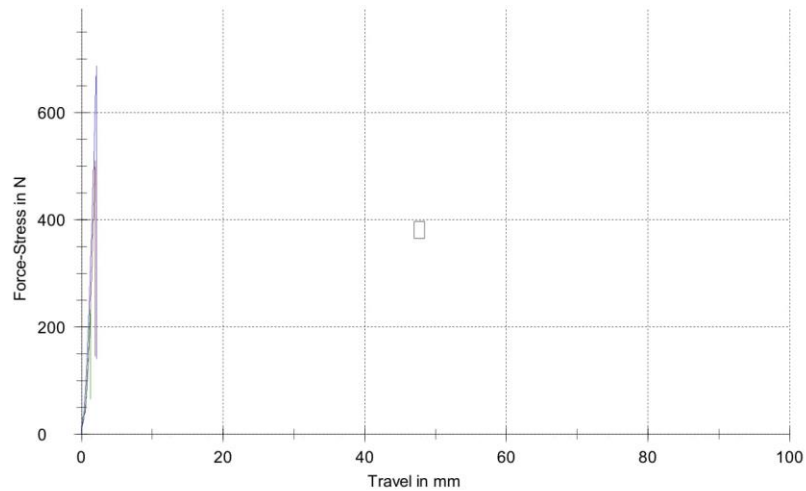
Parameter table:

Headline	: KUAT TARIK (14/48)	Evaluat. method	: M (Automatic A, B or C)
Customer	: 929/LUPKPP-PLASTIK/IV/19	Specimen holders	:
Tester	: L.TRIYONO	Extensometer	:
Material	: POLICARBONATE	Load cell	:
Test standard	: ASTM D 638		

Results:

Legends	Nr	Fmax Lm kgf	Measurement travel end mm
	1	52,078	1,96
	2	24,116	1,31
	3	70,068	2,12

Series graph:



Statistics:

Series n = 3	Fmax Lm kgf	Measurement travel end mm
x	48,754	1,80
s	23,156	0,43
v	47,50	24,13

KUAT TARIK (16/46)

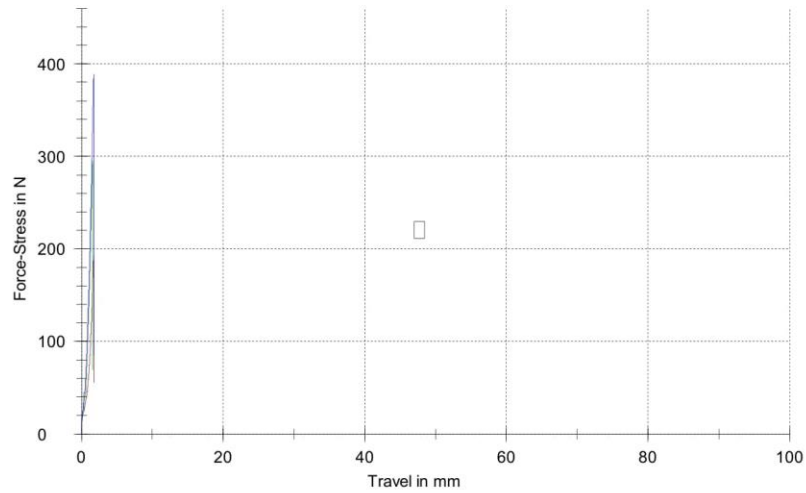
Parameter table:

Headline	: KUAT TARIK (16/46)	Evaluat. method	: M (Automatic A, B or C)
Customer	: 930/LUPKPP-PLASTIK/IV/19	Specimen holders	:
Tester	: L.TRIYONO	Extensometer	:
Material	: POLICARBONATE	Load cell	:
Test standard	: ASTM D 638		

Results:

Legends	Nr	Fmax Lm kgf	Measurement travel end mm
	1	19,530	1,73
	2	30,139	1,58
	3	39,649	1,73

Series graph:



Statistics:

Series n = 3	Fmax Lm kgf	Measurement travel end mm
x	29,773	1,68
s	10,065	0,09
v	33,81	5,26

KUAT TARIK (16/48)

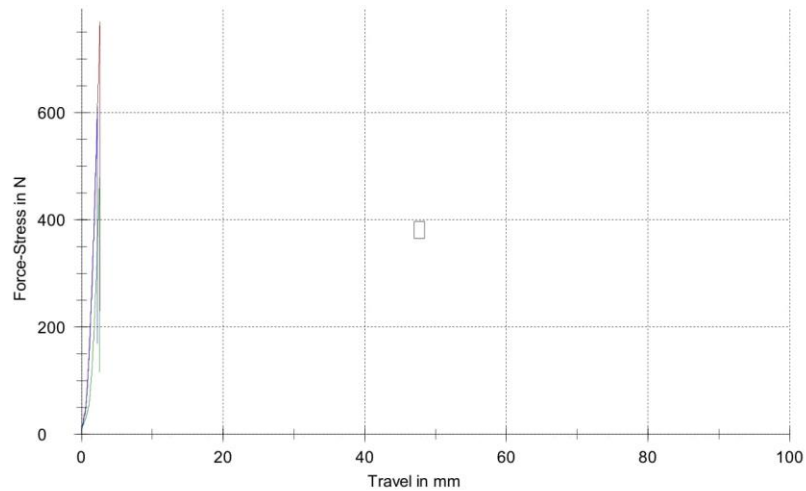
Parameter table:

Headline	: KUAT TARIK (16/48)	Evaluat. method	: M (Automatic A, B or C)
Customer	: 930/LUPKPP-PLASTIK/IV/19	Specimen holders	:
Tester	: L.TRIYONO	Extensometer	:
Material	: POLICARBONATE	Load cell	:
Test standard	: ASTM D 638		

Results:

Legends	Nr	Fmax Lm kgf	Measurement travel end mm
	1	78,560	2,62
	2	48,910	2,59
	3	62,389	2,29

Series graph:



Statistics:

Series n = 3	Fmax Lm kgf	Measurement travel end mm
x	63,286	2,50
s	14,846	0,18
v	23,46	7,37

