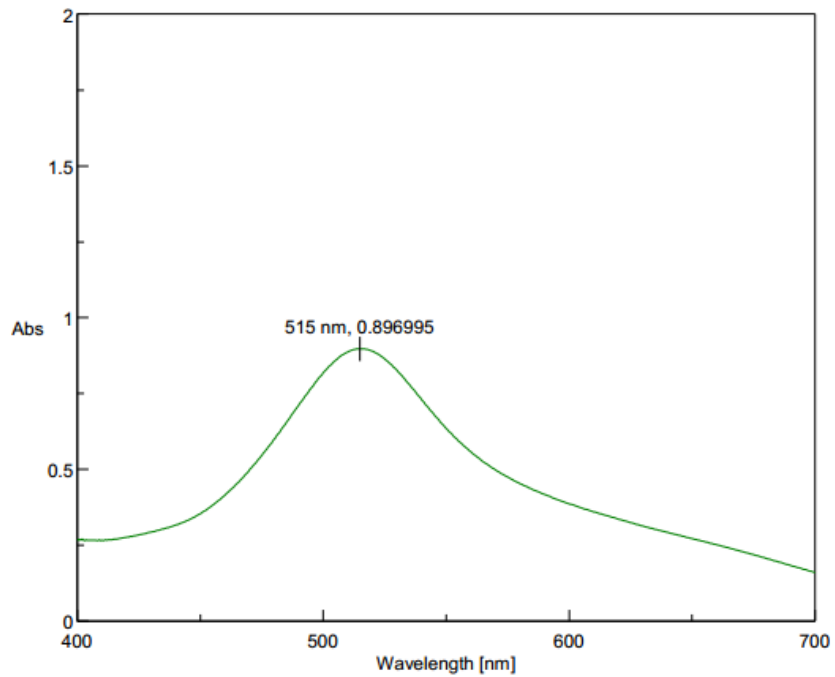


LAMPIRAN

Lampiran 1.



Hasil Panjang Gelombang Maksimum Uji Aktivitas Antioksidan



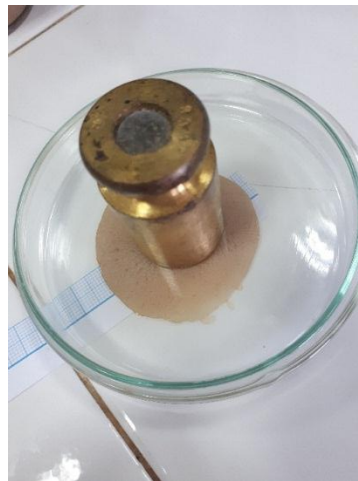
Hasil Uji Homogenitas Sediaan



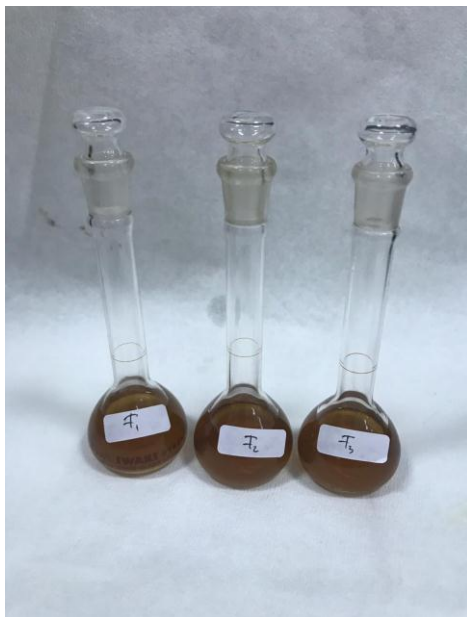
Hasil Uji pH Sediaan



Uji Daya Lekat Sediaan



Uji Daya Sebar Sediaan



Uji Aktivitas Antioksidan



Ekstrak Etanol Bunga Rosella Ungu



Formula I



Formula II, III, dan IV

Lampiran 2. Determinasi Tanaman

**LABORATORIUM BIOLOGI**

**FAKULTAS MIPA
UNIVERSITAS AHMAD DAHLAN**

Jl. Prof. Dr. Soepomo, Yogyakarta Telp. (0274) 563515

SURAT KETERANGAN

Nomor : 006/Lab.Bio/B/I/2019

Yang bertanda tangan di bawah ini Kepala Laboratorium Biologi Universitas Ahmad Dahlan menerangkan bahwa :

Nama : Nilla Nur Indah W
NIM : 20150350073
Prodi, PT : Farmasi, Universitas Muhammadiyah Yogyakarta

Telah melakukan determinasi tanaman dengan bimbingan Hery Setiyawan, M.Si di Laboratorium Biologi Universitas Ahmad Dahlan, pada tanggal 21 Januari 2019

Tanaman tersebut adalah :
Hibiscus sabdariffa L.

Demikian Surat Keterangan ini untuk dapat dipergunakan seperlunya.

Yogyakarta, 21 Januari 2019
Kepala Laboratorium Biologi



Drs. Hadi Sasongko, M.Si.

1b - 2b - 3b - 4b - 6b - 7b - 9b - 10b - 11b - 12b - 13b - 14a - 15a - 109b - 119b - 120b -
128b - 129b - 135b - 136b - 139b - 140b - 142b - 143a - 144a Malvaceae
1a - 2b - 3a Hibiscus
1b - 2b - 4a *Hibiscus sabdarifa* L.

Flora of Java (Steenis, 1958)

Lampiran 3. Uji Statistika

Uji Normalitas Data

Tests of Normality

Kelompok		Kolmogorov-Smirnov(a)			Shapiro-Wilk		
		Statistic	df	Sig.	Statistic	df	Sig.
Inhibisi	Rutin	.492	6	.000	.496	6	.000
	Ekstrak	.210	6	.200(*)	.924	6	.537
	F I	.253	6	.200(*)	.878	6	.259
	F II	.236	6	.200(*)	.877	6	.256
	F III	.191	6	.200(*)	.973	6	.910
	F IV	.229	6	.200(*)	.916	6	.480

* This is a lower bound of the true significance.

a Lilliefors Significance Correction

Uji *Kruskal-Wallis***Kruskal-Wallis Test**

Ranks

Kelompok		N	Mean Rank
Inhibisi	Rutin	6	33.50
	Ekstrak	6	15.50
	F I	6	3.50
	F II	6	9.50
	F III	6	21.50
	F IV	6	27.50
Total		36	

Test Statistics(a,b)

	Inhibisi
Chi-Square	34.146
df	5
Asymp. Sig.	.000

a Kruskal Wallis Test

b Grouping Variable: Kelompok

Uji *Man-Whitney* Rutin dan Ekstrak
Ranks

Kelompok		N	Mean Rank	Sum of Ranks
Inhibisi	Rutin	6	9.50	57.00
	Ekstrak	6	3.50	21.00
Total		12		

Test Statistics(b)

	Inhibisi
Mann-Whitney U	.000
Wilcoxon W	21.000
Z	-2.989
Asymp. Sig. (2-tailed)	.003
Exact Sig. [2*(1-tailed Sig.)]	.002(a)

a Not corrected for ties.

b Grouping Variable: Kelompok

Uji *Man-Whitney* Rutin dan Formula I
Ranks

Kelompok		N	Mean Rank	Sum of Ranks
Inhibisi	Rutin	6	9.50	57.00
	FI	6	3.50	21.00
Total		12		

Test Statistics(b)

	Inhibisi
Mann-Whitney U	.000
Wilcoxon W	21.000
Z	-2.989
Asymp. Sig. (2-tailed)	.003
Exact Sig. [2*(1-tailed Sig.)]	.002(a)

a Not corrected for ties.

b Grouping Variable: Kelompok

Uji *Man-Whitney* Rutin dan Formula II
Ranks

Kelompok		N	Mean Rank	Sum of Ranks
Inhibisi	Rutin	6	9.50	57.00
	F II	6	3.50	21.00
	Total	12		

Test Statistics(b)

	Inhibisi
Mann-Whitney U	.000
Wilcoxon W	21.000
Z	-2.994
Asymp. Sig. (2-tailed)	.003
Exact Sig. [2*(1-tailed Sig.)]	.002(a)

a Not corrected for ties.

b Grouping Variable: Kelompok

Uji *Man-Whitney* Rutin dan Formula III
Ranks

Kelompok		N	Mean Rank	Sum of Ranks
Inhibisi	Rutin	6	9.50	57.00
	F III	6	3.50	21.00
	Total	12		

Test Statistics(b)

	Inhibisi
Mann-Whitney U	.000
Wilcoxon W	21.000
Z	-2.989
Asymp. Sig. (2-tailed)	.003
Exact Sig. [2*(1-tailed Sig.)]	.002(a)

a Not corrected for ties.

b Grouping Variable: Kelompok

Uji *Man-Whitney* Rutin dan Formula IV
Ranks

Kelompok		N	Mean Rank	Sum of Ranks
Inhibisi	Rutin	6	9.50	57.00
	F IV	6	3.50	21.00
	Total	12		

Test Statistics(b)

	Inhibisi
Mann-Whitney U	.000
Wilcoxon W	21.000
Z	-2.989
Asymp. Sig. (2-tailed)	.003
Exact Sig. [2*(1-tailed Sig.)]	.002(a)

a Not corrected for ties.

b Grouping Variable: Kelompok

Uji *Man-Whitney* Ekstrak dan Formula I
Ranks

Kelompok		N	Mean Rank	Sum of Ranks
Inhibisi	Ekstrak	6	9.50	57.00
	F I	6	3.50	21.00
	Total	12		

Test Statistics(b)

	Inhibisi
Mann-Whitney U	.000
Wilcoxon W	21.000
Z	-2.882
Asymp. Sig. (2-tailed)	.004
Exact Sig. [2*(1-tailed Sig.)]	.002(a)

a Not corrected for ties.

b Grouping Variable: Kelompok

Uji *Man-Whitney* Ekstrak dan Formula II
Ranks

Kelompok		N	Mean Rank	Sum of Ranks
Inhibisi	Ekstrak	6	9.50	57.00
	F II	6	3.50	21.00
	Total	12		

Test Statistics(b)

	Inhibisi
Mann-Whitney U	.000
Wilcoxon W	21.000
Z	-2.887
Asymp. Sig. (2-tailed)	.004
Exact Sig. [2*(1-tailed Sig.)]	.002(a)

a Not corrected for ties.

b Grouping Variable: Kelompok

Uji *Man-Whitney* Ekstrak dan Formula III
Ranks

Kelompok		N	Mean Rank	Sum of Ranks
Inhibisi	Ekstrak	6	3.50	21.00
	F III	6	9.50	57.00
	Total	12		

Test Statistics(b)

	Inhibisi
Mann-Whitney U	.000
Wilcoxon W	21.000
Z	-2.882
Asymp. Sig. (2-tailed)	.004
Exact Sig. [2*(1-tailed Sig.)]	.002(a)

a Not corrected for ties.

b Grouping Variable: Kelompok

Uji *Man-Whitney* Ekstrak dan Formula IV
Ranks

Kelompok		N	Mean Rank	Sum of Ranks
Inhibisi	Ekstrak	6	3.50	21.00
	F IV	6	9.50	57.00
	Total	12		

Test Statistics(b)

	Inhibisi
Mann-Whitney U	.000
Wilcoxon W	21.000
Z	-2.882
Asymp. Sig. (2-tailed)	.004
Exact Sig. [2*(1-tailed Sig.)]	.002(a)

a Not corrected for ties.

b Grouping Variable: Kelompok

Uji *Man-Whitney* Formula I dan Formula II
Ranks

Kelompok		N	Mean Rank	Sum of Ranks
Inhibisi	F I	6	3.50	21.00
	F II	6	9.50	57.00
	Total	12		

Test Statistics(b)

	Inhibisi
Mann-Whitney U	.000
Wilcoxon W	21.000
Z	-2.887
Asymp. Sig. (2-tailed)	.004
Exact Sig. [2*(1-tailed Sig.)]	.002(a)

a Not corrected for ties.

b Grouping Variable: Kelompok

Uji *Man-Whitney* Formula I dan Formula III
Ranks

	Kelompok	N	Mean Rank	Sum of Ranks
Inhibisi	F I	6	3.50	21.00
	F III	6	9.50	57.00
	Total	12		

Test Statistics(b)

	Inhibisi
Mann-Whitney U	.000
Wilcoxon W	21.000
Z	-2.882
Asymp. Sig. (2-tailed)	.004
Exact Sig. [2*(1-tailed Sig.)]	.002(a)

a Not corrected for ties.

b Grouping Variable: Kelompok

Uji *Man-Whitney* Formula I dan Formula IV
Ranks

	Kelompok	N	Mean Rank	Sum of Ranks
Inhibisi	F I	6	3.50	21.00
	F IV	6	9.50	57.00
	Total	12		

Test Statistics(b)

	Inhibisi
Mann-Whitney U	.000
Wilcoxon W	21.000
Z	-2.882
Asymp. Sig. (2-tailed)	.004
Exact Sig. [2*(1-tailed Sig.)]	.002(a)

a Not corrected for ties.

b Grouping Variable: Kelompok

Uji *Man-Whitney* Formula II dan Formula III

Ranks

Kelompok	N	Mean Rank	Sum of Ranks
Inhibisi F II	6	3.50	21.00
F III	6	9.50	57.00
Total	12		

Test Statistics(b)

	Inhibisi
Mann-Whitney U	.000
Wilcoxon W	21.000
Z	-2.887
Asymp. Sig. (2-tailed)	.004
Exact Sig. [2*(1-tailed Sig.)]	.002(a)

a Not corrected for ties.

b Grouping Variable: Kelompok

Uji *Man-Whitney* Formula II dan Formula IV

Ranks

Kelompok	N	Mean Rank	Sum of Ranks
Inhibisi F II	6	3.50	21.00
F IV	6	9.50	57.00
Total	12		

Test Statistics(b)

	Inhibisi
Mann-Whitney U	.000
Wilcoxon W	21.000
Z	-2.887
Asymp. Sig. (2-tailed)	.004
Exact Sig. [2*(1-tailed Sig.)]	.002(a)

a Not corrected for ties.

b Grouping Variable: Kelompok

Uji *Man-Whitney* Formula III dan Formula IV
Ranks

Kelompok	N	Mean Rank	Sum of Ranks
Inhibisi F III	6	3.50	21.00
F IV	6	9.50	57.00
Total	12		

Test Statistics(b)

	Inhibisi
Mann-Whitney U	.000
Wilcoxon W	21.000
Z	-2.882
Asymp. Sig. (2-tailed)	.004
Exact Sig. [2*(1-tailed Sig.)]	.002(a)

a Not corrected for ties.

b Grouping Variable: Kelompok