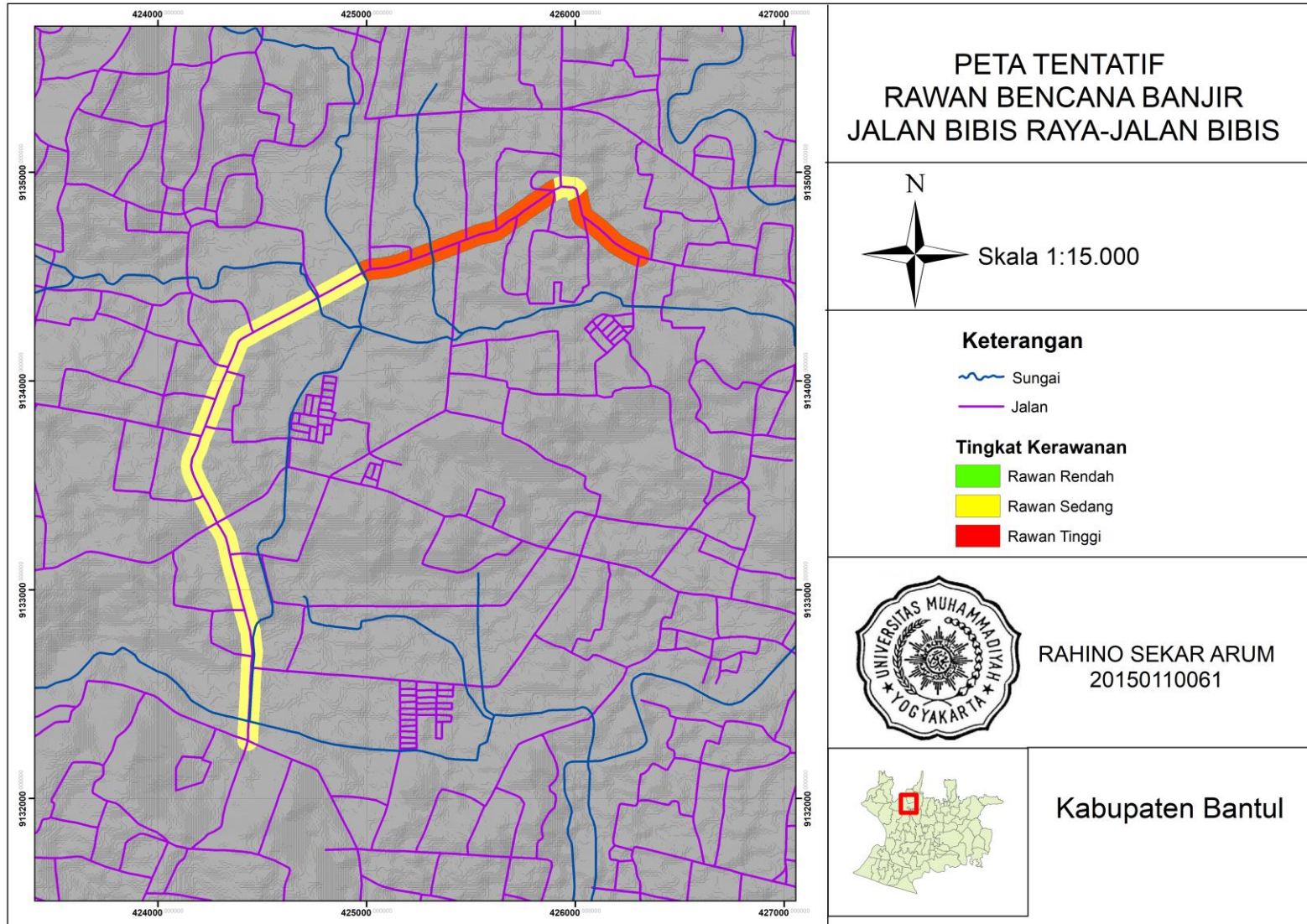
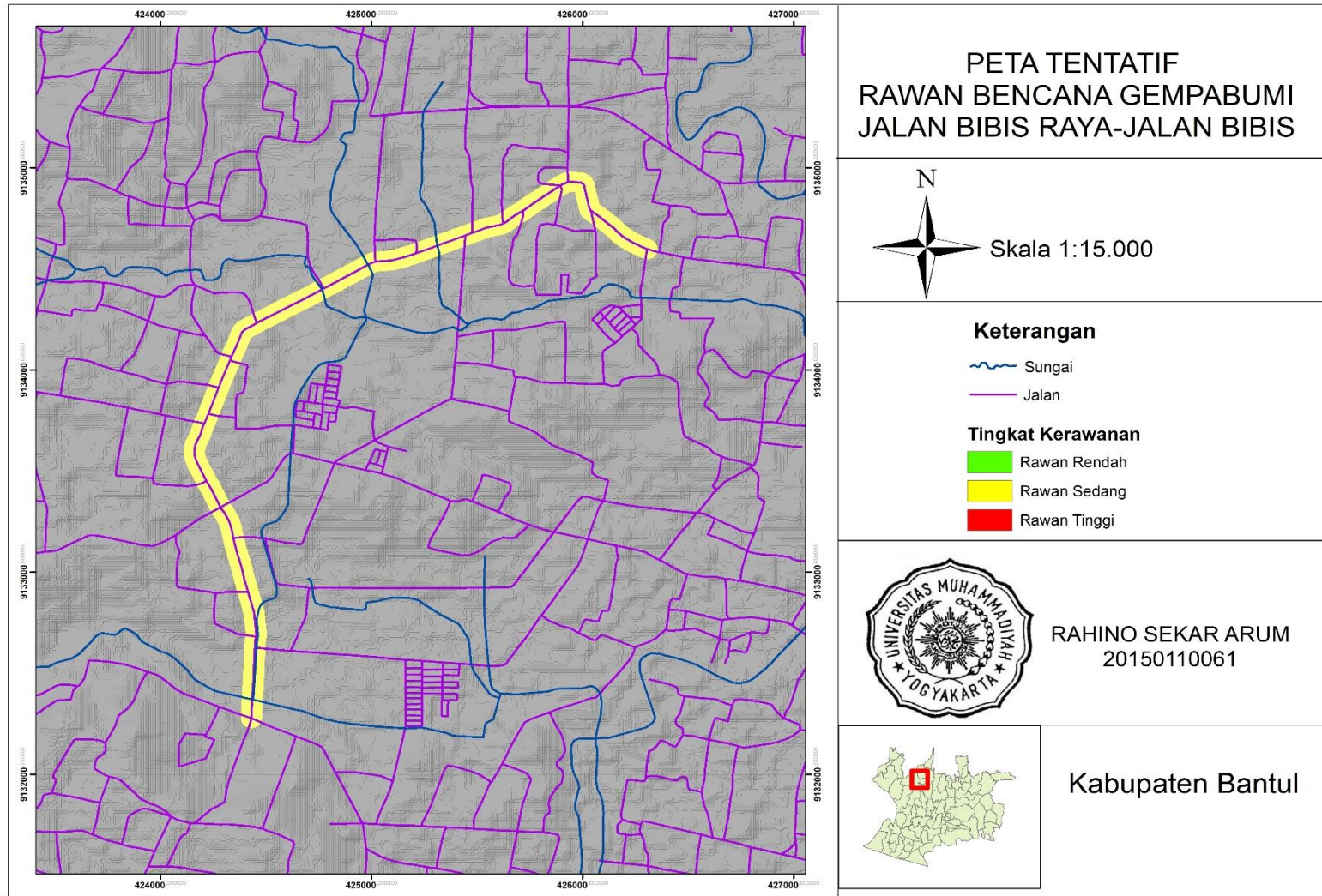


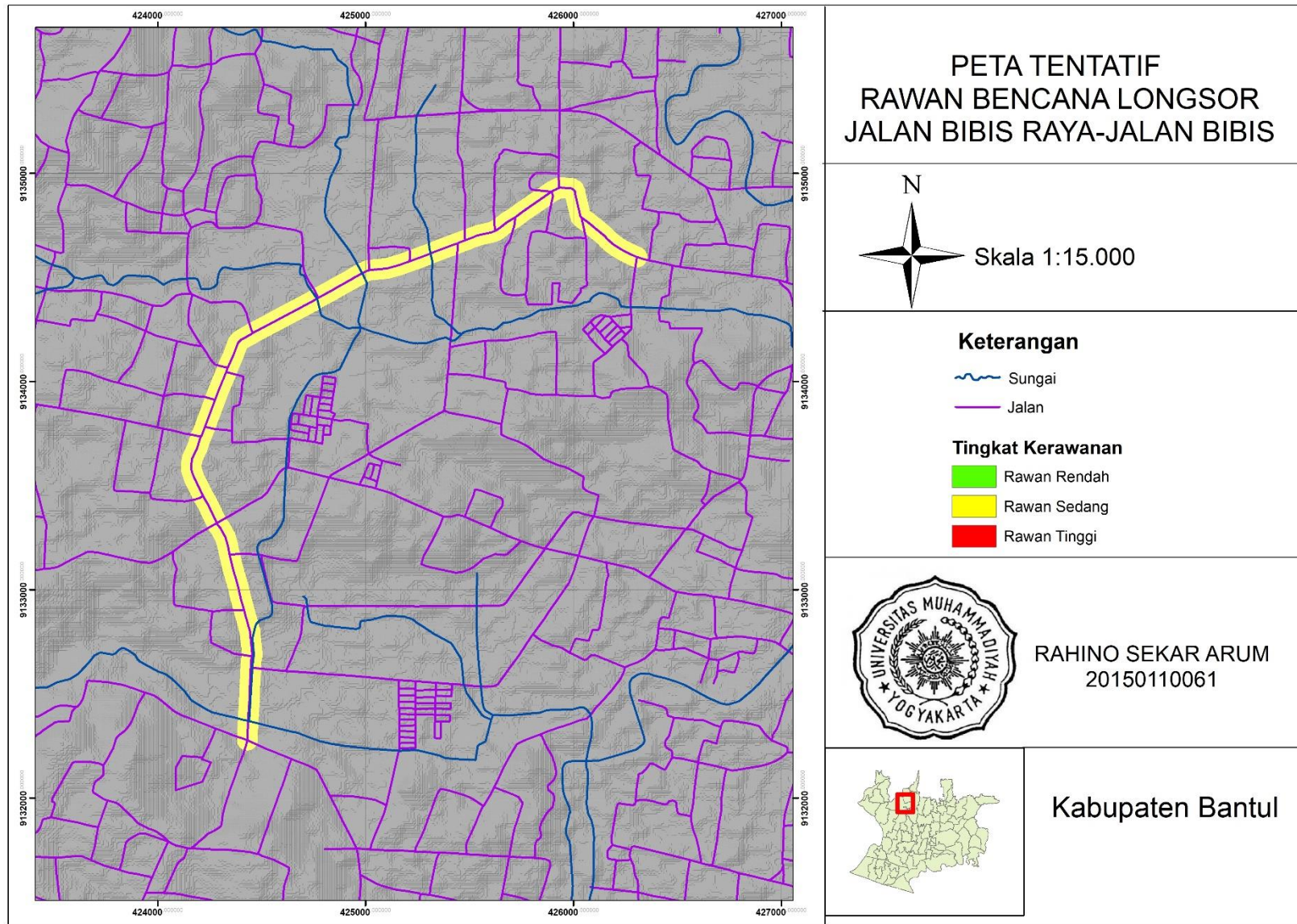
Lampiran 1 Peta tentatif rawan bencana banjir



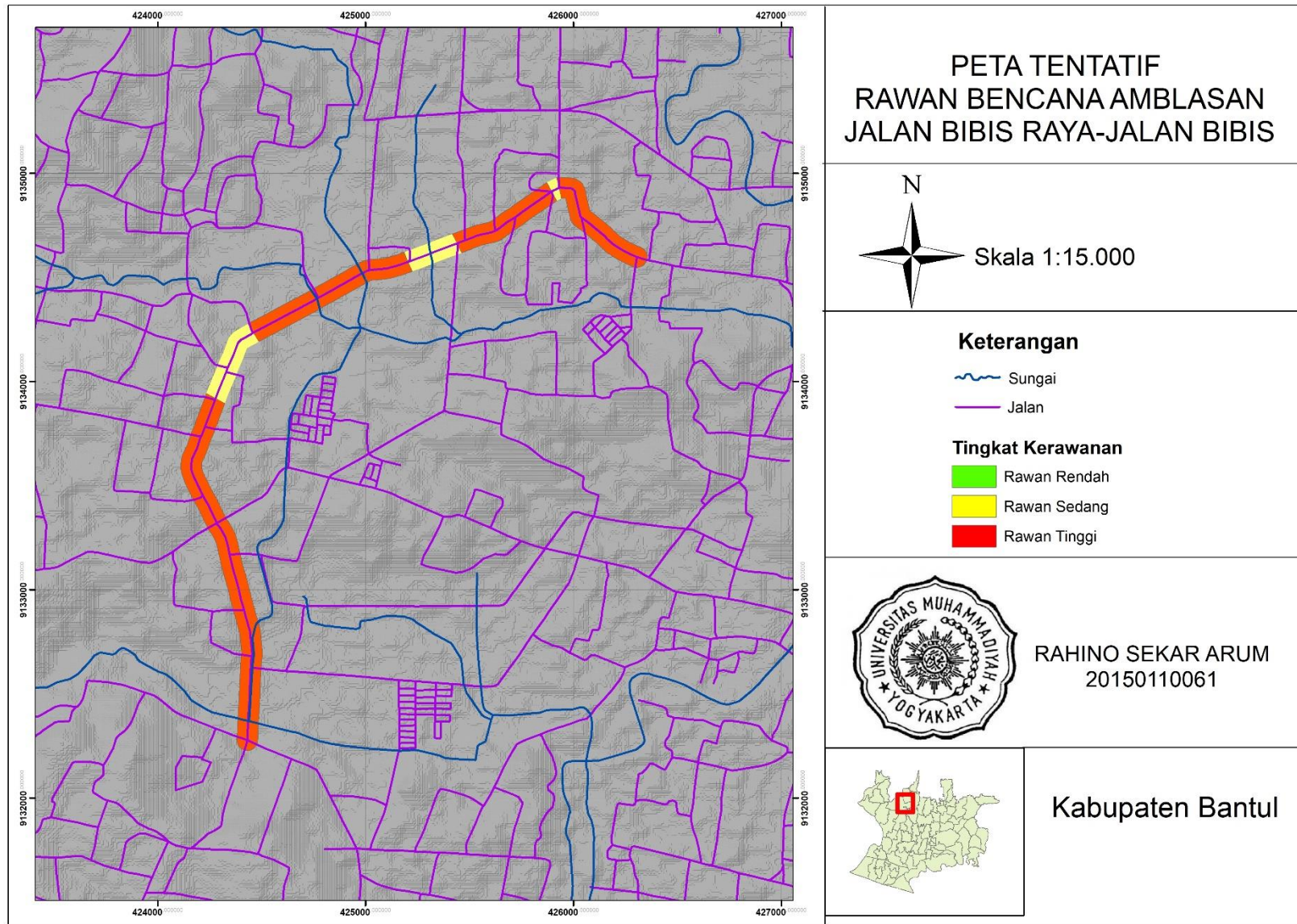
Lampiran 2 Peta tentatif rawan bencana gempa bumi



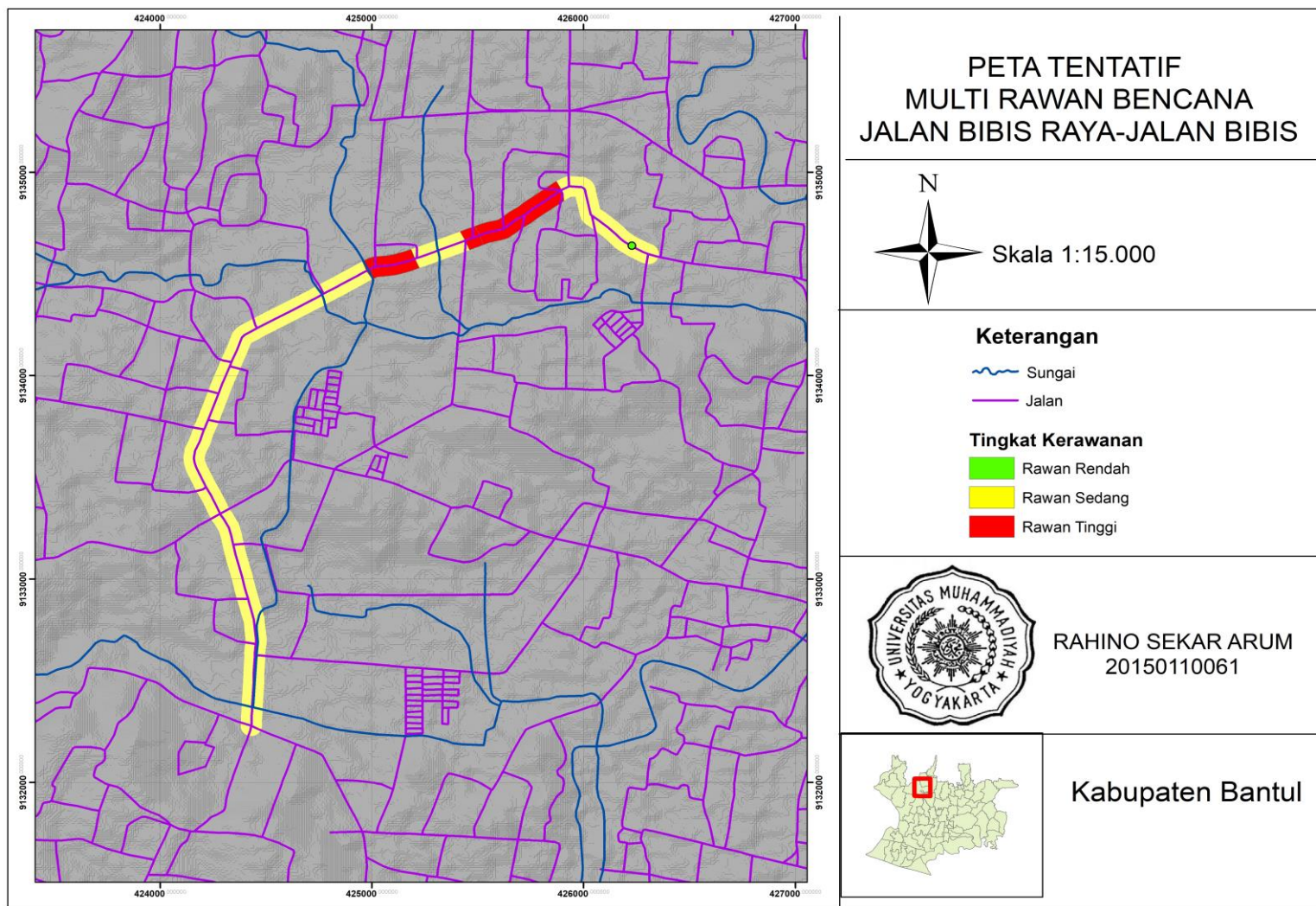
Lampiran 3 Peta tentatif rawan bencana longsor



Lampiran 4 Peta tentatif rawan bencana amblasan



Lampiran 5 Peta tentatif multi-rawan bencana



Lampiran 6 Peta indeks kerusakan jalan



Ashpalt Surfaced Roads & Parking Lots Condition Survey Data Sheet For										Sketch			
Sample Unit													
1. Alligator Cracking/Buaya			6. Depression			11. Patching & cut patching			16. Shoving				
2. Bleeding/kegemukan			7. Edge cracking			12. Polished Aggregate			17. Slippage Cracking				
3. Block cracking			8. Joint reflection cracking			13. Potholes Count			18. Swell				
4. Bump and sags			9. lane/shoulder Drop off			14. Railroad Crossing			19. Weathering/Pelepasan butir				
5. Corrugation			10. Long & train cracking			15. Rutting/Alur							
STA	Distress Severity	Quantity									Total	Density (%)	Deduct Value
6+920-7+020	12 H	6									6	1	20
	1 L	6									6	1	10

	12 L	0.4									0.4	0.07	0
	7 M	0.06									0.06	0.01	0
Ashpalt Surfaced Roads & Parking Lots Condition Survey Data Sheet For										Sketch			
Sample Unit													
1. Alligator Cracking/Buaya			6. Depression			11. Patching & cut patching			16. Shoving				
2. Bleeding/kegemukan			7. Edge cracking			12. Polished Aggregate			17. Slippage Cracking				
3. Block cracking			8. Joint reflection cracking			13. Potholes Count			18. Swell				
4. Bump and sags			9. lane/shoulder Drop off			14. Railroad Crossing			19. Weathering/Pelepasan butir				
5. Corrugation			10. Long & train cracking			15. Rutting/Alur							

STA	Distress	Quantity									Total	Density (%)	Deduct Value
	Severity												
7+020- 7+120	7 H	0.27	1.6	0.146	1.072	0.012	0.2	0.64			3.94	0.6	11
	7 M	0.3	0.0336	0.05	0.66						0.454	0.08	0
	7 L	0.386									0.39	0.07	0

Ashpalt Surfaced Roads & Parking Lots Condition Survey Data Sheet For Sample Unit										Sketch		
1. Alligator Cracking/Buaya			6. Depression			11. Patching & cut patching			16. Shoving			
2. Bleeding/kegemukan			7. Edge cracking			12. Polished Aggregate			17. Slippage Cracking			
3. Block cracking			8. Joint reflection cracking			13. Potholes Count			18. Swell			
4. Bump and sags			9. lane/shoulder Drop off			14. Railroad Crossing			19. Weathering/Pelepasan butir			
5. Corrugation			10. Long & train cracking			15. Rutting/Alur						
STA	Distress Severity	Quantity								Total	Density (%)	Deduct Value
	1 L	0.4466	0.02							0.466	0.08	0

7+120- 7+220	13 M	0.048									0.048	0.01	0
	7 M	3.08									3.08	0.51	5
	1 M	0.063									0.063	0.01	0
	7 H	3.3	0.705								4.01	0.67	10.8
	11 L	2.4									2.4	0.4	1

Ashpalt Surfaced Roads & Parking Lots Condition Survey Data Sheet										Sketch			
For Sample Unit													
1. Alligator Cracking/Buaya			6. Depression			11. Patching & cut patching			16. Shoving				
2. Bleeding/kegemukan			7. Edge cracking			12. Polished Aggregate			17. Slippage Cracking				
3. Block cracking			8. Joint reflection cracking			13. Potholes Count			18. Swell				
4. Bump and sags			9. lane/shoulder Drop off			14. Railroad Crossing			19. Weathering/Pelepasan butir				
5. Corrugation			10. Long & train cracking			15. Rutting/Alur							
STA	Distress Severity	Quantity								Total	Density (%)	Deduct Value	
	1 L	0.98	0.6							1.58	0.26	4	

7+220- 7+320	10 M	0.5									0.5	0.08	0
	7 M	0.066									0.066	0.01	0
	10 H	0.66									0.66	0.12	5
	11 L	0.689									0.69	0.1	0
	11 H	0.864									0.86	0.14	8
	13 M	0.033									0.033	0.1	8
	16 L	27.16									2716	3.5	11

Ashpalt Surfaced Roads & Parking Lots Condition Survey Data Sheet For										Sketch			
Sample Unit													
1. Alligator Cracking/Buaya			6. Depression			11. Patching & cut patching			16. Shoving				
2. Bleeding/kegemukan			7. Edge cracking			12. Polished Aggregate			17. Slippage Cracking				
3. Block cracking			8. Joint reflection cracking			13. Potholes Count			18. Swell				
4. Bump and sags			9. lane/shoulder Drop off			14. Railroad Crossing			19. Weathering/Pelepasan butir				
5. Corrugation			10. Long & train cracking			15. Rutting/Alur							
STA	Distress Severity	Quantity								Total	Density (%)	Deduct Value	
	13 L	0.25								0.25	4.17	82	

7+320- 7+420	1 M	0.6	0.8	2.4	8.96	3	0.93				16.68	2.78	30
	10 L	0.675	3								3.68	0.61	0
	11 M	1.6									1.6	0.27	0
	7 H	2.44									2.44	0.41	0

Ashpalt Surfaced Roads & Parking Lots Condition Survey Data Sheet										Sketch			
For Sample Unit													
1. Alligator Cracking/Buaya			6. Depression			11. Patching & cut patching				16. Shoving			
2. Bleeding/kegemukan			7. Edge cracking			12. Polished Aggregate				17. Slippage Cracking			
3. Block cracking			8. Joint reflection cracking			13. Potholes Count				18. Swell			
4. Bump and sags			9. lane/shoulder Drop off			14. Railroad Crossing				19. Weathering/Pelepasan butir			
5. Corrugation			10. Long & train cracking			15. Rutting/Alur							
STA	Distress Severity	Quantity								Total	Density (%)	Deduct Value	
	1 M	10	3.92							13.92	2.82	20	

7+420- 7+520	1 L	4.8									4.8	0.8	9
	13 L	0.21									0.21	0.04	0.5
	11 M	20									20	3.33	18
	16 M	2.2	16								18.2	3.03	20

Ashpalt Surfaced Roads & Parking Lots Condition Survey Data Sheet										Sketch			
For Sample Unit													
1. Alligator Cracking/Buaya			6. Depression			11. Patching & cut patching				16. Shoving			
2. Bleeding/kegemukan			7. Edge cracking			12. Polished Aggregate				17. Slippage Cracking			
3. Block cracking			8. Joint reflection cracking			13. Potholes Count				18. Swell			
4. Bump and sags			9. lane/shoulder Drop off			14. Railroad Crossing				19. Weathering/Pelepasan butir			
5. Corrugation			10. Long & train cracking			15. Rutting/Alur							
STA	Distress Severity	Quantity								Total	Density (%)	Deduct Value	
	11 M	8.5	25.3	10.88						44.63	7.45	29	

7+520-	16 L	9									9	1.5	7
7+620													

Ashpalt Surfaced Roads & Parking Lots Condition Survey Data Sheet										Sketch			
For Sample Unit													
1. Alligator Cracking/Buaya			6. Depression			11. Patching & cut patching				16. Shoving			
2. Bleeding/kegemukan			7. Edge cracking			12. Polished Aggregate				17. Slippage Cracking			
3. Block cracking			8. Joint reflection cracking			13. Potholes Count				18. Swell			
4. Bump and sags			9. lane/shoulder Drop off			14. Railroad Crossing				19. Weathering/Pelepasan butir			
5. Corrugation			10. Long & train cracking			15. Rutting/Alur							
STA	Distress Severity	Quantity								Total	Density (%)	Deduct Value	
	7 L	1.95								1.95	0.33	1	

7+620-													
7+720													

Ashpalt Surfaced Roads & Parking Lots Condition Survey Data Sheet										Sketch			
For Sample Unit													
1. Alligator Cracking/Buaya			6. Depression			11. Patching & cut patching				16. Shoving			
2. Bleeding/kegemukan			7. Edge cracking			12. Polished Aggregate				17. Slippage Cracking			
3. Block cracking			8. Joint reflection cracking			13. Potholes Count				18. Swell			
4. Bump and sags			9. lane/shoulder Drop off			14. Railroad Crossing				19. Weathering/Pelepasan butir			
5. Corrugation			10. Long & train cracking			15. Rutting/Alur							
STA	Distress Severity	Quantity								Total	Density (%)	Deduct Value	
	13 M	1.5								1.5	0.25	55	

7+720- 7+820	11 M	21.1									21.1	3.52	20

Ashpalt Surfaced Roads & Parking Lots Condition Survey Data Sheet										Sketch			
For Sample Unit													
1. Alligator Cracking/Buaya			6. Depression			11. Patching & cut patching				16. Shoving			
2. Bleeding/kegemukan			7. Edge cracking			12. Polished Aggregate				17. Slippage Cracking			
3. Block cracking			8. Joint reflection cracking			13. Potholes Count				18. Swell			
4. Bump and sags			9. lane/shoulder Drop off			14. Railroad Crossing				19. Weathering/Pelepasan butir			
5. Corrugation			10. Long & train cracking			15. Rutting/Alur							
STA	Distress Severity	Quantity								Total	Density (%)	Deduct Value	
	11 H	82.6								82.6	13.77	80	

7+820- 7+920	11 M	21.8									21.8	3.63	19

Ashpalt Surfaced Roads & Parking Lots Condition Survey Data Sheet										Sketch			
For Sample Unit													
1. Alligator Cracking/Buaya			6. Depression			11. Patching & cut patching				16. Shoving			
2. Bleeding/kegemukan			7. Edge cracking			12. Polished Aggregate				17. Slippage Cracking			
3. Block cracking			8. Joint reflection cracking			13. Potholes Count				18. Swell			
4. Bump and sags			9. lane/shoulder Drop off			14. Railroad Crossing				19. Weathering/Pelepasan butir			
5. Corrugation			10. Long & train cracking			15. Rutting/Alur							
STA	Distress Severity	Quantity									Total	Density (%)	Deduct Value
	19 M	11.76									11.76	1.96	9.5

7+920- 8+020													

Ashpalt Surfaced Roads & Parking Lots Condition Survey Data Sheet										Sketch			
For Sample Unit													
1. Alligator Cracking/Buaya			6. Depression			11. Patching & cut patching			16. Shoving				
2. Bleeding/kegemukan			7. Edge cracking			12. Polished Aggregate			17. Slippage Cracking				
3. Block cracking			8. Joint reflection cracking			13. Potholes Count			18. Swell				
4. Bump and sags			9. lane/shoulder Drop off			14. Railroad Crossing			19. Weathering/Pelepasan butir				
5. Corrugation			10. Long & train cracking			15. Rutting/Alur							
STA	Distress Severity	Quantity									Total	Density (%)	Deduct Value
	1 L	2.4									2.4	0.4	6

8+020- 8+120	6 M	6.8									6.8	1.13	9
	11 M	2.4									2.4	0.4	6

Ashpalt Surfaced Roads & Parking Lots Condition Survey Data Sheet										Sketch			
For Sample Unit													
1. Alligator Cracking/Buaya			6. Depression			11. Patching & cut patching			16. Shoving				
2. Bleeding/kegemukan			7. Edge cracking			12. Polished Aggregate			17. Slippage Cracking				
3. Block cracking			8. Joint reflection cracking			13. Potholes Count			18. Swell				
4. Bump and sags			9. lane/shoulder Drop off			14. Railroad Crossing			19. Weathering/Pelepasan butir				
5. Corrugation			10. Long & train cracking			15. Rutting/Alur							
STA	Distress Severity	Quantity								Total	Density (%)	Deduct Value	
	1 M	0.5								0.5	0.83	20	

6+620- 6+720	4 M	0.64									0.64	0.11	8
	12 L	117									117	19.5	7
	7 M	13									13	2.17	11

Ashpalt Surfaced Roads & Parking Lots Condition Survey Data Sheet										Sketch			
For Sample Unit													
1. Alligator Cracking/Buaya			6. Depression			11. Patching & cut patching			16. Shoving				
2. Bleeding/kegemukan			7. Edge cracking			12. Polished Aggregate			17. Slippage Cracking				
3. Block cracking			8. Joint reflection cracking			13. Potholes Count			18. Swell				
4. Bump and sags			9. lane/shoulder Drop off			14. Railroad Crossing			19. Weathering/Pelepasan butir				
5. Corrugation			10. Long & train cracking			15. Rutting/Alur							
STA	Distress Severity	Quantity								Total	Density (%)	Deduct Value	
	7 L	0.08	2.5							2.58	0.43	2	

6+720-	7 M	0.14	1.6								1.74	0.29	4
6+820													

Ashpalt Surfaced Roads & Parking Lots Condition Survey Data Sheet										Sketch			
For Sample Unit													
1. Alligator Cracking/Buaya			6. Depression			11. Patching & cut patching			16. Shoving				
2. Bleeding/kegemukan			7. Edge cracking			12. Polished Aggregate			17. Slippage Cracking				
3. Block cracking			8. Joint reflection cracking			13. Potholes Count			18. Swell				
4. Bump and sags			9. lane/shoulder Drop off			14. Railroad Crossing			19. Weathering/Pelepasan butir				
5. Corrugation			10. Long & train cracking			15. Rutting/Alur							
STA	Distress Severity	Quantity								Total	Density (%)	Deduct Value	
	7 M	3.2								3.2	0.53	5	

6+820-													
6+920													