

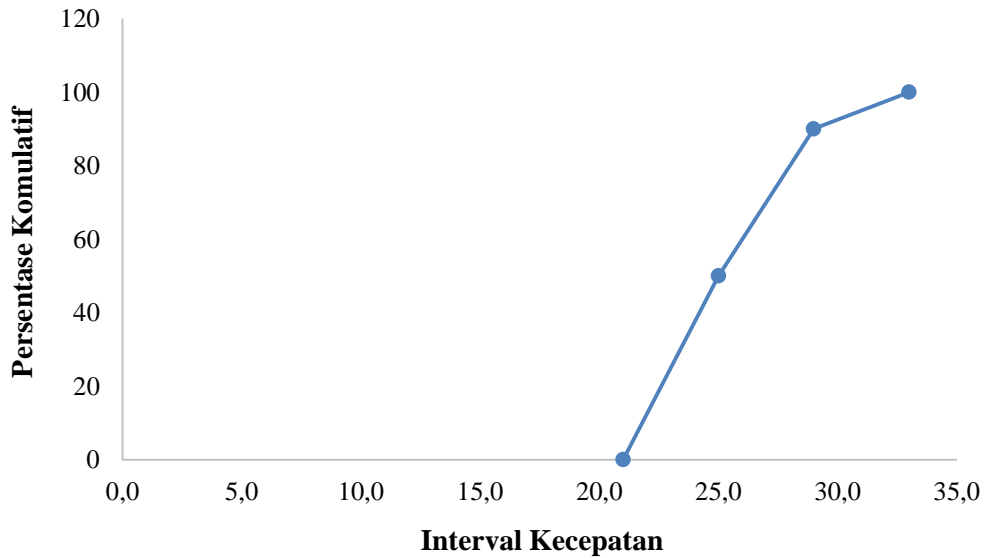
Lampiran 3 Formulir Survei Lalu Lintas U-T

FORMULIR SURVEI PENCACAHAN ARUS LALU LINTAS KENDARAAN															
Ruas / Simpang		: TAMAN SISWA			Hari		: SABTU		Surveyor		: Agustina Priyanti				
Arah		: U-T			Tanggal		: Mei 2018		Tanda Tangan						
LURUS															
Lengan	Waktu	Jenis Kendaraan											Jumlah (kend)	Cuaca	
		Trailer	Truk Gandeng	Truk Besar	Truk Sedang	Bus Besar, AKAP	Bus Sedang, AKDP	Angkutan Umum non Bus (Angkot)	Pickup, Mobil hantaran (box)	Sedan, Jeep, Kijang	Sepeda Motor	Kend Tak bermotor			
U-T	07.00 - 07.15	0	0	0	0	0	0	2	5	10	123	0	140	cerah	
	07.15 - 07.30	0	0	0	0	0	0	0	4	9	263	0	276	cerah	
	07.30 - 07.45	0	0	0	0	0	0	3	12	23	102	1	141	cerah	
	07.45 - 08.00	0	0	0	0	0	0	0	4	11	82	1	98	cerah	
	08.00 - 08.15	0	0	0	1	0	2	0	0	7	76	0	86	cerah	
	08.15 - 08.30	0	0	0	0	0	0	0	3	6	60	0	69	cerah	
	08.30 - 08.45	0	0	0	0	0	1	0	2	10	60	4	77	cerah	
	08.45 - 09.00	0	0	0	0	0	2	0	6	9	74	0	91	cerah	
	12.00 - 12.15	0	0	0	0	0	0	0	0	3	76	0	79	cerah	
	12.15 - 12.30	0	0	0	0	0	1	0	1	14	86	0	102	cerah	
	12.30 - 12.45	0	0	0	1	0	2	0	0	19	100	0	122	cerah	
	12.45 - 13.00	0	0	0	1	0	1	0	0	14	89	1	106	cerah	
	13.00 - 13.15	0	0	0	1	0	1	0	2	13	87	0	104	berawan	
	13.15 - 13.30	0	0	0	1	0	0	0	1	18	89	2	111	berawan	
	13.30 - 13.45	0	0	0	2	0	1	0	3	21	118	0	145	berawan	
	13.45 - 14.00	0	0	0	2	0	1	0	3	13	106	1	126	berawan	
	16.00 - 16.15	0	0	0	0	0	1	0	4	19	135	2	161	berawan	
	16.15 - 16.30	0	0	0	0	0	1	0	1	22	143	0	167	berawan	
	16.30 - 16.45	0	0	0	0	0	0	0	0	16	142	3	161	berawan	
	16.45 - 17.00	0	0	0	0	0	1	0	2	19	150	1	173	berawan	
	17.00 - 17.15	0	0	0	0	0	2	0	2	17	151	2	174	berawan	
	17.15 - 17.30	0	0	0	0	0	1	0	1	12	127	2	143	berawan	
	17.30 - 17.45	0	0	0	0	0	1	0	0	10	58	0	69	berawan	
	17.45 - 18.00	0	0	0	0	0	1	0	0	6	61	1	69	berawan	
	Jumlah														
	Total		0	0	0	0	0	0	0	0	0	0	0	0	0
														0	

Lampiran 13. Data Kecepatan HV Lengan Utara

HV									
Interval Kecepatan			Angka tengah (xi)	Jumlah Data (fi)	Jumlah Komulatif	Presentase Data	Persentase komulatif	(fi . xi)	(fi . xi ²)
1			2	3	4	5	6	7	8
15	-	19	17,0	0	0	0	0	0	0
19	-	23	21,0	0	0	0	0	0	0
23	-	27	25,0	5	5	50	50	125	3125
27	-	31	29,0	4	9	40	90	116	3364
31	-	35	33,0	1	10	10	100	33	1089
35	-	39	37,0	0	10	0	100	0	0
39	-	43	41,0	0	10	0	100	0	0
43	-	47	45,0	0	10	0	100	0	0
47	-	51	49,0	0	10	0	100	0	0
Total				10				274	7578

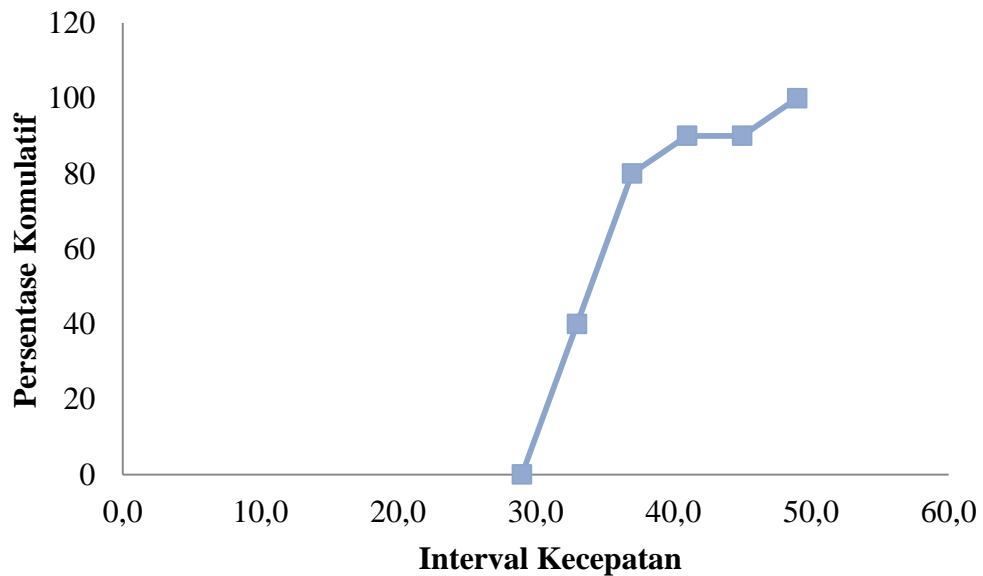
Kecepatan rata-rata = 27,4 km/jam
 Varian = 7,04 km/jam
 Standar Deviasi = 2,6533 km/jam
 Standar error = 0,839047 km/jam



Lampiran 14. Data Kecepatan LV Lengan Utara

LV									
Interval Kecepatan			Angka tengah (xi)	Jumlah Data (fi)	Jumlah Komulatif	Presentase Data	Persentase komulatif	(fi . xi)	(fi . xi ²)
1			2	3	4	5	6	7	8
15	-	19	17,0	0	0	0	0	0	0
19	-	23	21,0	0	0	0	0	0	0
23	-	27	25,0	0	0	0	0	0	0
27	-	31	29,0	0	0	0	0	0	0
31	-	35	33,0	4	4	40	40	132	4356
35	-	39	37,0	4	8	40	80	148	5476
39	-	43	41,0	1	9	10	90	41	1681
43	-	47	45,0	0	9	0	90	0	0
47	-	51	49,0	1	10	10	100	49	2401
Total					10			370	13914

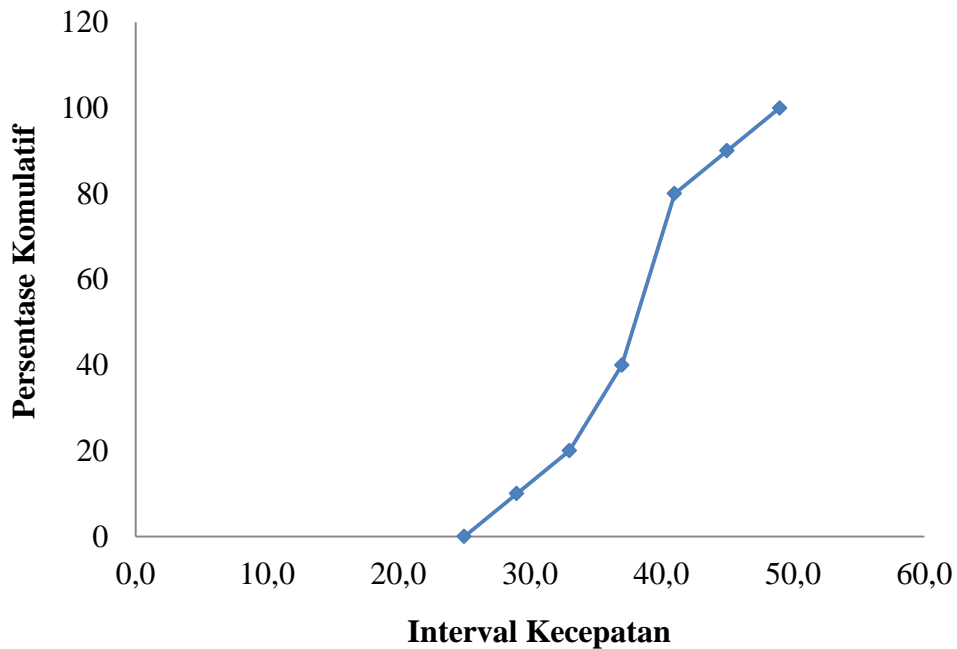
Kecepatan rata-rata = 37 km/jam
 Varian = 22,4 km/jam
 Standar Deviasi = 4,732864 km/jam
 Standar error = 1,496663 km/jam



Lampiran 15. Data Kecepatan MC Lengan Utara

MC									
Interval Kecepatan			Angka tengah (xi)	Jumlah Data (fi)	Jumlah Komulatif	Presentase Data	Persentase komulatif	(fi . xi)	(fi . xi ²)
1			2	3	4	5	6	7	8
15	-	19	17,0	0	0	0	0	0	0
19	-	23	21,0	0	0	0	0	0	0
23	-	27	25,0	0	0	0	0	0	0
27	-	31	29,0	1	1	10	10	29	841
31	-	35	33,0	1	1	10	20	33	1089
35	-	39	37,0	2	2	20	40	74	2738
39	-	43	41,0	4	4	40	80	164	6724
43	-	47	45,0	1	1	10	90	45	2025
47	-	51	49,0	1	1	10	100	49	2401
Total				10				394	15818

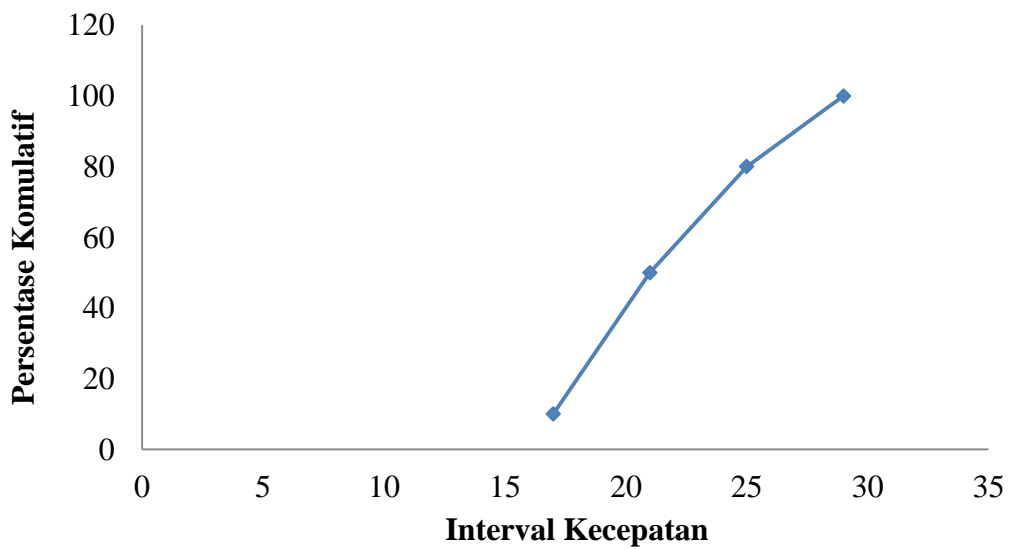
Kecepatan rata-rata = 39,4 km/jam
 Varian = 29,44 km/jam
 Standar Deviasi = 5,42586 km/jam
 Standar error = 1,71581 km/jam



Lampiran 16. Data Kecepatan HV Lengan Timur

HV									
Interval Kecepatan			Angka tengah (xi)	Jumlah Data (fi)	Jumlah Komulatif	Presentase Data	Persentase komulatif	(fi . xi)	(fi . xi ²)
1			2	3	4	5	6	7	8
15	-	19	17	1	1	10	10	17	289
19	-	23	21	4	5	40	50	84	1764
23	-	27	25	3	8	30	80	75	1875
27	-	31	29	2	10	20	100	58	1682
31	-	35	33	0	10	0	100	0	0
35	-	39	37	0	10	0	100	0	0
39	-	43	41	0	10	0	100	0	0
43	-	47	45	0	10	0	100	0	0
47	-	51	49	0	10	0	100	0	0
Total				10				234	5610

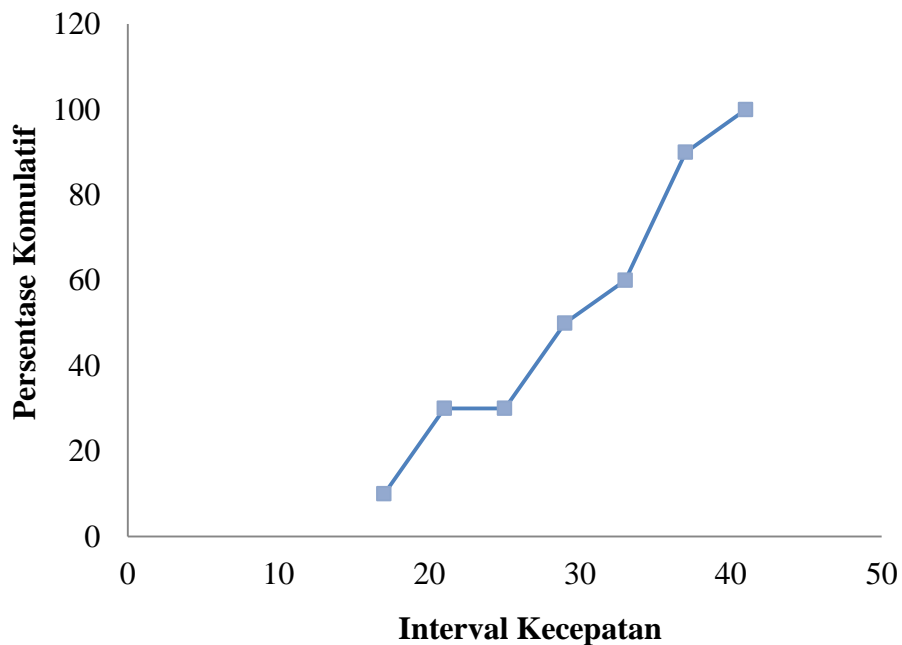
Kecepatan rata-rata = 23,4 km/jam
 Varian = 13,44 km/jam
 Standar Deviasi = 3,666061 km/jam
 Standar error = 1,15931 km/jam



Lampiran 17. Data Kecepatan LV Lengan Timur

LV									
Interval Kecepatan			Angka tengah (xi)	Jumlah Data (fi)	Jumlah Komulatif	Presentase Data	Persentase komulatif	(fi . xi)	(fi . xi ²)
1			2	3	4	5	6	7	8
15	-	19	17	1	1	10	10	17	289
19	-	23	21	2	3	20	30	42	882
23	-	27	25	0	3	0	30	0	0
27	-	31	29	2	5	20	50	58	1682
31	-	35	33	1	6	10	60	33	1089
35	-	39	37	3	9	30	90	111	4107
39	-	43	41	1	10	10	100	41	1681
43	-	47	45	0	10	0	100	0	0
47	-	51	49	0	10	0	100	0	0
Total				10				302	9730

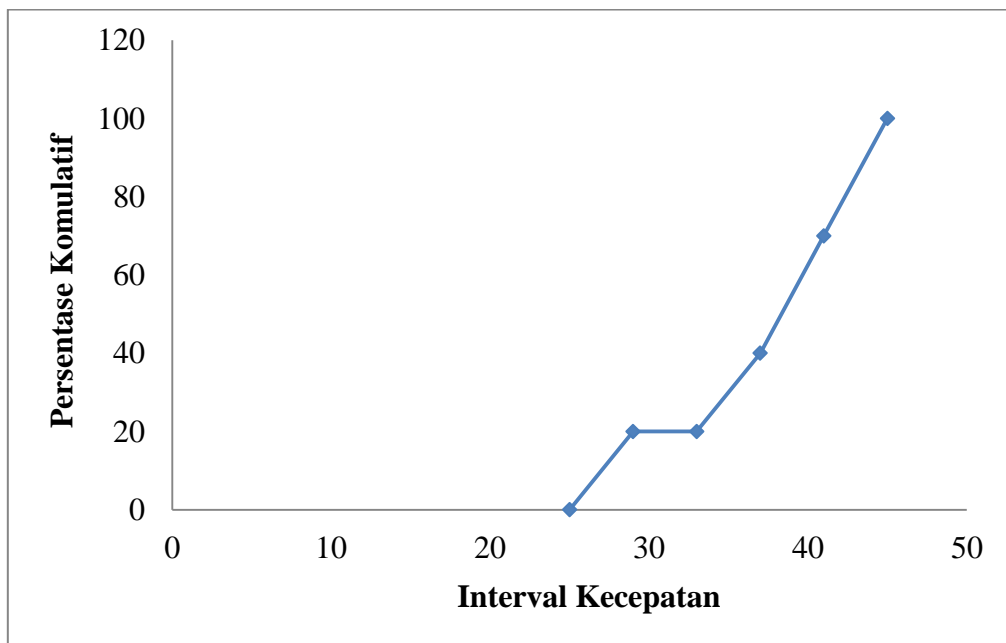
Kecepatan rata-rata = 30,2 km/jam
 Varian = 60,96 km/jam
 Standar Deviasi = 7,807689 km/jam
 Standar error = 2,469008 km/jam



Lampiran 18. Data Kecepatan MC Lengan Timur

MC									
Interval Kecepatan			Angka tengah (xi)	Jumlah Data (fi)	Jumlah Komulatif	Presentase Data	Persentase komulatif	(fi . xi)	(fi . xi ²)
1			2	3	4	5	6	7	8
15	-	19	17	0	0	0	0	0	0
19	-	23	21	0	0	0	0	0	0
23	-	27	25	0	0	0	0	0	0
27	-	31	29	2	2	20	20	58	1682
31	-	35	33	0	2	0	20	0	0
35	-	39	37	2	4	20	40	74	2738
39	-	43	41	3	7	30	70	123	5043
43	-	47	45	3	10	30	100	135	6075
47	-	51	49	0	10	0	100	0	0
Total					10			390	15538

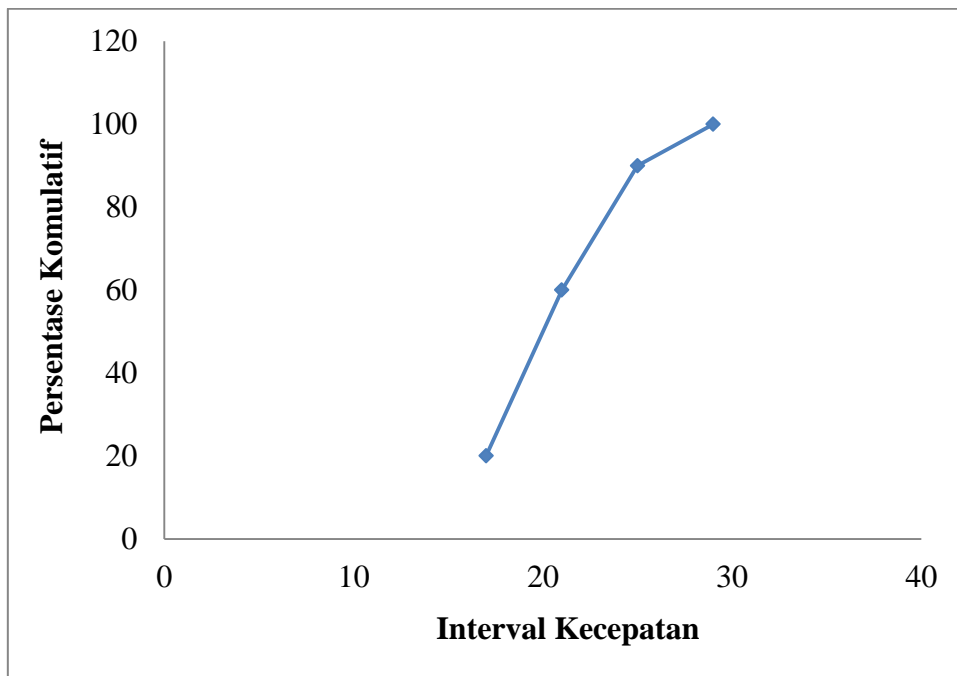
Kecepatan rata-rata = 39 km/jam
 Varian = 32,8 km/jam
 Standar Deviasi = 5,727128 km/jam
 Standar error = 1,811077 km/jam



Lampiran 19. Data Kecepatan HV Lengan Barat

HV									
Interval Kecepatan			Angka tengah (xi)	Jumlah Data (fi)	Jumlah Komulatif	Present ase Data	Persentase komulatif	(fi . xi)	(fi . xi ²)
1			2	3	4	5	6	7	8
15	-	19	17	2	2	20	20	34	578
19	-	23	21	4	6	40	60	84	1764
23	-	27	25	3	9	30	90	75	1875
27	-	31	29	1	10	10	100	29	841
31	-	35	33	0	10	0	100	0	0
35	-	39	37	0	10	0	100	0	0
39	-	43	41	0	10	0	100	0	0
43	-	47	45	0	10	0	100	0	0
47	-	51	49	0	10	0	100	0	0
Total					10			222	5058

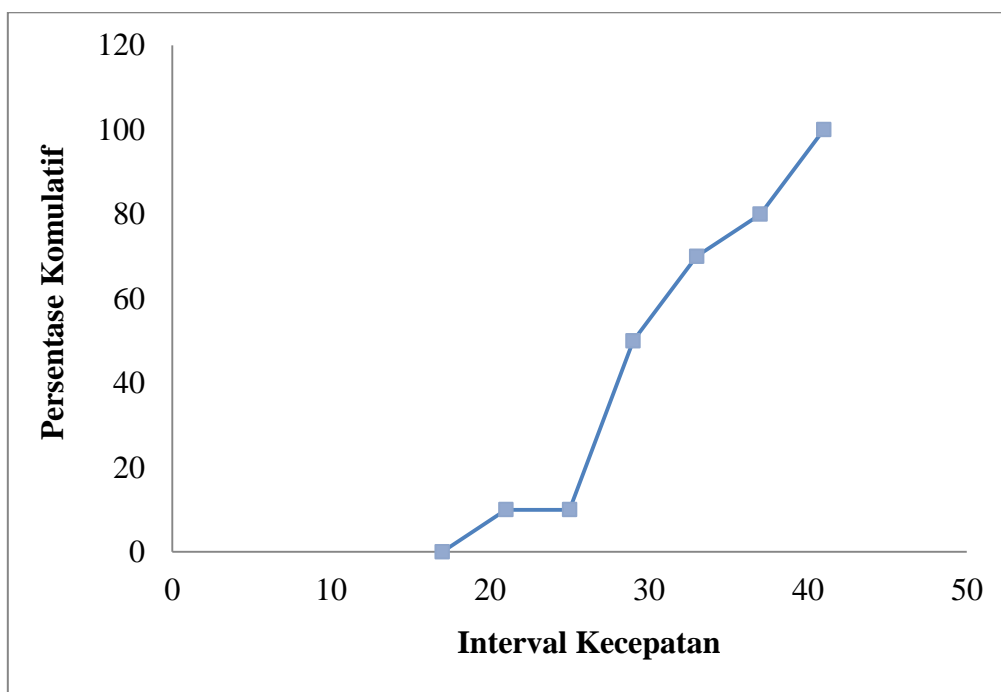
Kecepatan rata-rata = 22,2 km/jam
 Varian = 12,96 km/jam
 Standar Deviasi = 3,6 km/jam
 Standar error = 1,13842 km/jam



Lampiran 20. Data Kecepatan LV Lengan Barat

LV									
Interval Kecepatan			Angka tengah (xi)	Jumlah Data (fi)	Jumlah Komulatif	Presentase Data	Persentase komulatif	(fi . xi)	(fi . xi ²)
1			2	3	4	5	6	7	8
15	-	19	17	0	0	0	0	0	0
19	-	23	21	1	1	10	10	21	441
23	-	27	25	0	1	0	10	0	0
27	-	31	29	4	5	40	50	116	3364
31	-	35	33	2	7	20	70	66	2178
35	-	39	37	1	8	10	80	37	1369
39	-	43	41	2	10	20	100	82	3362
43	-	47	45	0	10	0	100	0	0
47	-	51	49	0	10	0	100	0	0
Total				10				322	10714

Kecepatan rata-rata = 32,2 km/jam
 Varian = 34,56 km/jam
 Standar Deviasi = 5,87877 km/jam
 Standar error = 1,85903 km/jam



Lampiran 21. Data Kecepatan MC Lengan Barat

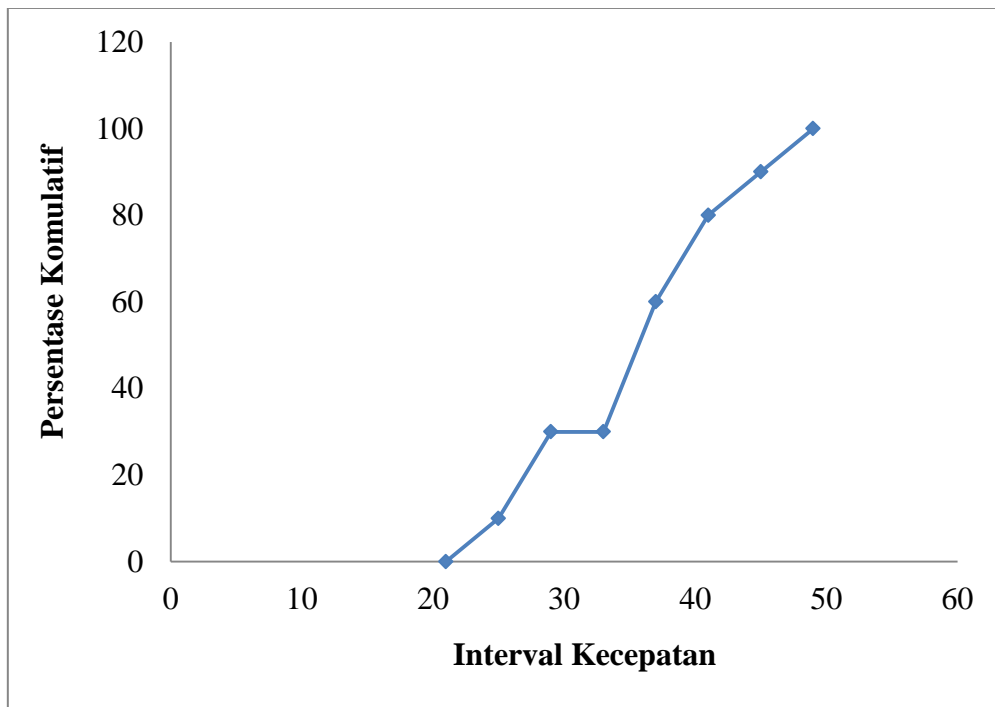
MC									
Interval Kecepatan			Angka tengah (xi)	Jumlah Data (fi)	Jumlah Komulatif	Presentase Data	Persentase komulatif	(fi . xi)	(fi . xi ²)
1			2	3	4	5	6	7	8
15	-	19	17	0	0	0	0	0	0
19	-	23	21	0	0	0	0	0	0
23	-	27	25	1	1	10	10	25	625
27	-	31	29	2	3	20	30	58	1682
31	-	35	33	0	3	0	30	0	0
35	-	39	37	3	6	30	60	111	4107
39	-	43	41	2	8	20	80	82	3362
43	-	47	45	1	9	10	90	45	2025
47	-	51	49	1	10	10	100	49	2401
Total					10			370	14202

Kecepatan rata-rata = 37 km/jam

Varian = 51,2 km/jam

Standar Deviasi = 7,155418 km/jam

Standar error = 2,262742 km/jam



Lampiran 22. Data Kecepatan HV Lengan Selatan

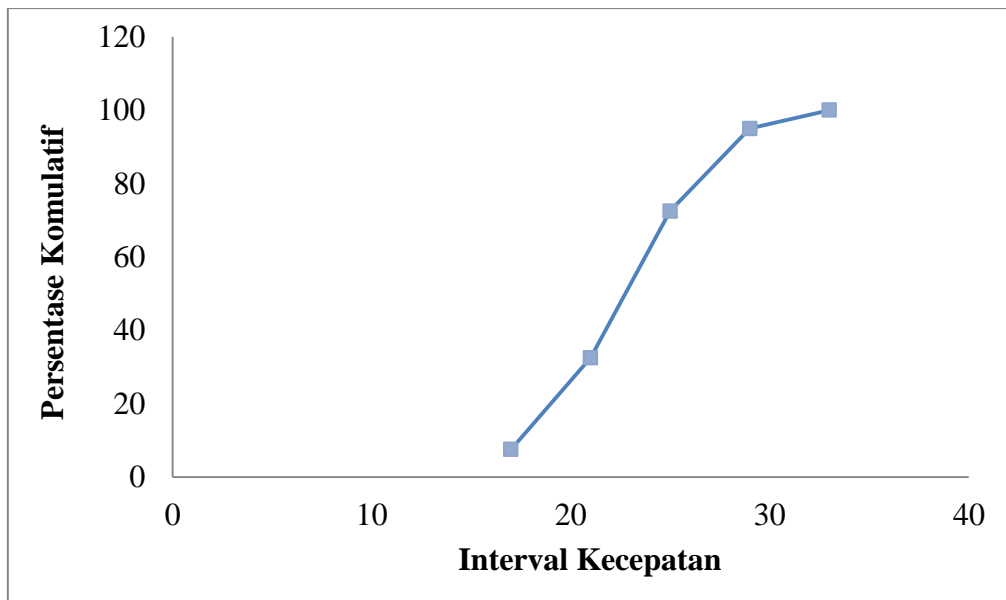
HV									
Interval Kecepatan			Angka tengah (xi)	Jumlah Data (fi)	Jumlah Komulatif	Presentase Data	Persentase komulatif	(fi . xi)	(fi . xi ²)
1			2	3	4	5	6	7	8
15	-	19	17	3	3	7,5	7,5	51	867
19	-	23	21	10	13	25	32,5	210	4410
23	-	27	25	16	29	40	72,5	400	10000
27	-	31	29	9	38	22,5	95	261	7569
31	-	35	33	2	40	5	100	66	2178
35	-	39	37	0	40	0	100	0	0
39	-	43	41	0	40	0	100	0	0
43	-	47	45	0	40	0	100	0	0
47	-	51	49	0	40	0	100	0	0
Total				40				988	25024

Kecepatan rata-rata = 24,7 km/jam

Varian = 15,51 km/jam

Standar Deviasi = 3,938274 km/jam

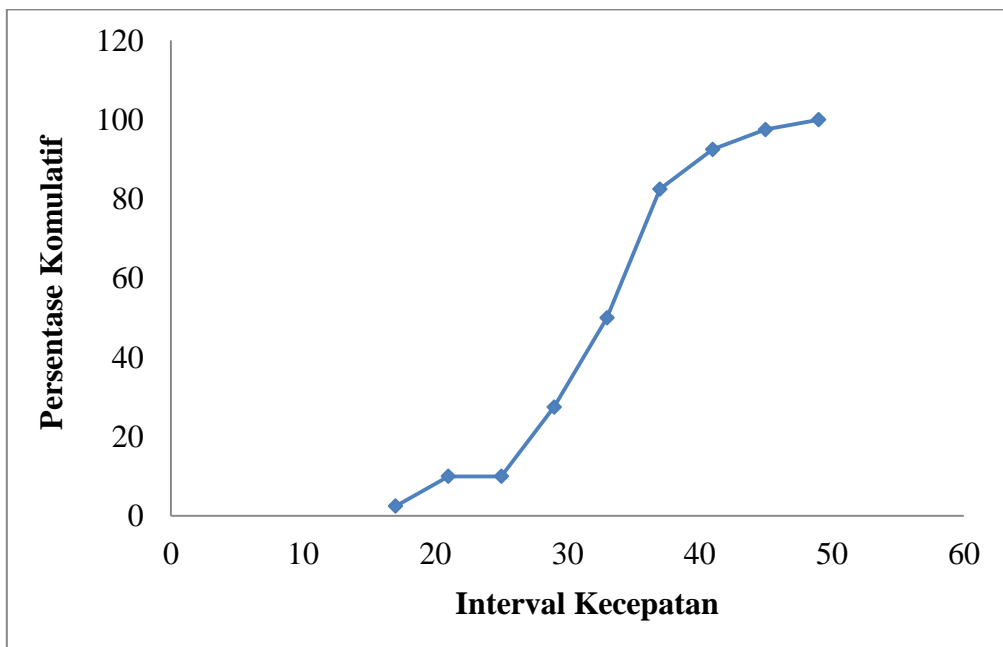
Standar error = 0,622696 km/jam



Lampiran 23. Data Kecepatan LV Lengan Selatan

LV									
Interval Kecepatan			Angka tengah (xi)	Jumlah Data (fi)	Jumlah Komulatif	Presentase Data	Persentase komulatif	(fi . xi)	(fi . xi ²)
1			2	3	4	5	6	7	8
15	-	19	17	1	1	2,5	2,5	17	289
19	-	23	21	3	4	7,5	10	63	1323
23	-	27	25	0	4	0	10	0	0
27	-	31	29	7	11	17,5	27,5	203	5887
31	-	35	33	9	20	22,5	50	297	9801
35	-	39	37	13	33	32,5	82,5	481	17797
39	-	43	41	4	37	10	92,5	164	6724
43	-	47	45	2	39	5	97,5	90	4050
47	-	51	49	1	40	2,5	100	49	2401
Total				40				1364	48272

Kecepatan rata-rata = 34,1 km/jam
 Varian = 43,99 km/jam
 Standar Deviasi = 6,632496 km/jam
 Standar error = 1,04869 km/jam



Lampiran 24. Data Kecepatan MC Lengan Selatan

MC									
Interval Kecepatan			Angka tengah (xi)	Jumlah Data (fi)	Jumlah Komulatif	Presentase Data	Persentase komulatif	(fi . xi)	(fi . xi ²)
1			2	3	4	5	6	7	8
15	-	19	17	0	0	0	0	0	0
19	-	23	21	0	0	0	0	0	0
23	-	27	25	1	1	2,5	2,5	25	625
27	-	31	29	7	8	17,5	20	203	5887
31	-	35	33	1	9	2,5	22,5	33	1089
35	-	39	37	11	20	27,5	50	407	15059
39	-	43	41	10	30	25	75	410	16810
43	-	47	45	7	37	17,5	92,5	315	14175
47	-	51	49	3	40	7,5	100	147	7203
Total					40			1540	60848

Kecepatan rata-rata = 38,5 km/jam
 Varian = 38,95 km/jam
 Standar Deviasi = 6,240994 km/jam
 Standar error = 0,986788 km/jam

