

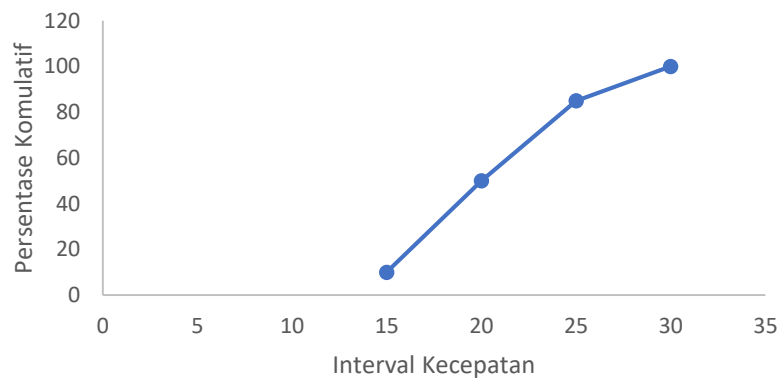
LAMPIRAN 1
(DATA KECEPATAN)

1. Analisa Data Kecepatan Pada Jalan Magelang U

a. Data kecepatan jenis kendaraan berat (HV) Jalan Magelang U.

Tabel 1 Analisis Data Kecepatan Jalan Magelang U

| Interval Kecepatan | Angka tengah (xi) | Jumlah Data (fi) | Jumlah Komulatif | Persentase Data | Persentase komulatif | (fi . xi) | (fi . xi ²) |
|--------------------|-------------------|------------------|---------------------|-----------------|----------------------|-----------|-------------------------|
| 1 | 2 | 3 | 4 | 5 | 6 | 7 | 8 |
| 15 - 19.9 | 17.5 | 2 | 2 | 10 | 10 | 34.9 | 609.005 |
| 20 - 24.9 | 22.5 | 8 | 10 | 40 | 50 | 179.6 | 4032.02 |
| 25 - 29.9 | 27.5 | 7 | 17 | 35 | 85 | 192.1 | 5274.51 |
| 30 - 34.9 | 32.5 | 3 | 20 | 15 | 100 | 97.35 | 3159.00 |
| 35 - 39.9 | 37.5 | 0 | 20 | 0 | 100 | 0 | 0 |
| 40 - 44.9 | 42.5 | 0 | 20 | 0 | 100 | 0 | 0 |
| 45 - 49.9 | 47.5 | 0 | 20 | 0 | 100 | 0 | 0 |
| 50 - 54.9 | 52.5 | 0 | 20 | 0 | 100 | 0 | 0 |
| 55 - 60 | 57.5 | 0 | 20 | 0 | 100 | 0 | 0 |
| Total | | 20 | | | | 504 | 13074.5 |
| | | | Kecepatan rata-rata | = | | 25.2 | km/jam |
| | | | Varian | = | | 18.6 | km/jam |
| | | | Standar Deviasi | = | | 4.32 | km/jam |
| | | | Standar error | = | | 0.96 | km/jam |

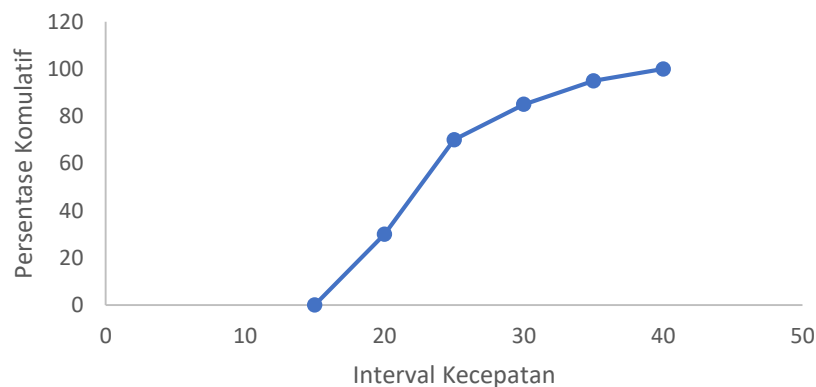


Gambar 1 Grafik kecepatan kendaraan berat (HV) Jalan Magelang U

b. Data Kecepatan Kendaraan Ringan (LV) Jalan Magelang U.

Tabel 2 Data Kecepatan Kendaraan Ringan (LV) Jalan Magelang U

| Interval Kecepatan | Angka tengah (xi) | Jumlah Data (fi) | Jumlah Komulatif | Presentase Data | Persentase komulatif | (fi . xi) | (fi . xi ²) |
|--------------------|-------------------|------------------|------------------|---------------------|----------------------|-----------|-------------------------|
| 1 | 2 | 3 | 4 | 5 | 6 | 7 | 8 |
| 15 - | 19.9 | 17.5 | 0 | 0 | 0 | 0 | 0 |
| 20 - | 24.9 | 22.5 | 6 | 6 | 30 | 30 | 134.7 15 |
| 25 - | 29.9 | 27.5 | 8 | 14 | 40 | 70 | 219.6 2 |
| 30 - | 34.9 | 32.5 | 3 | 17 | 15 | 85 | 97.35 08 |
| 35 - | 39.9 | 37.5 | 2 | 19 | 10 | 95 | 74.9 05 |
| 40 - | 44.9 | 42.5 | 1 | 20 | 5 | 100 | 42.45 03 |
| 45 - | 49.9 | 47.5 | 0 | 20 | 0 | 100 | 0 0 |
| 50 - | 54.9 | 52.5 | 0 | 20 | 0 | 100 | 0 0 |
| 55 - | 60 | 57.5 | 0 | 20 | 0 | 100 | 0 0 |
| Total | | | 20 | | | | 569 05 |
| | | | | Kecepatan rata-rata | = | 28.45 | km/jam |
| | | | | Varian | = | 31.5 | km/jam |
| | | | | Standar Deviasi | = | 5.6124 | km/jam |
| | | | | | | 86 | |
| | | | | Standar error | = | 1.2549 | km/jam |
| | | | | | | 9 | |

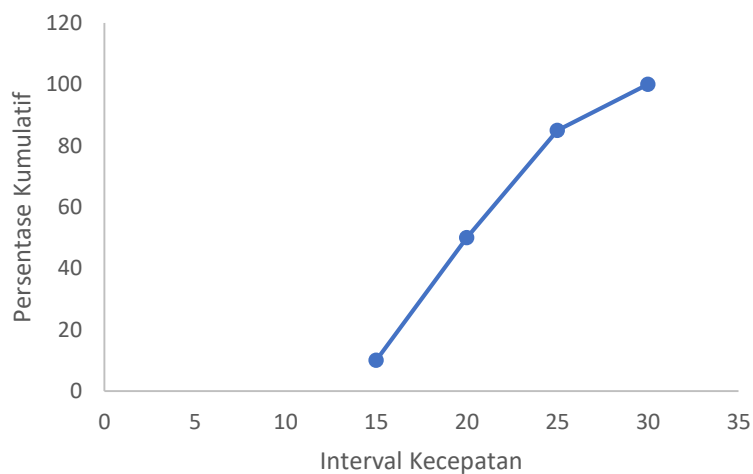


Gambar 2 Grafik kecepatan kendaraan ringan (LV) Jalan Magelang U

c. Data Kecepatan Kendaraan Bermotor (MC) Jalan Magelang U

Tabel 3 Data Kecepatan Kendaraan Bermotor (MC) Jalan Magelang U

| Interval Kecepatan | Angka tengah (xi) | Jumlah Data (fi) | Jumlah Kumulatif | Presentase Data | Persentase kumulatif | (fi . xi) | (fi . xi ²) |
|--------------------|-------------------|------------------|------------------|---------------------|----------------------|-----------|-------------------------|
| 1 | 2 | 3 | 4 | 5 | 6 | 7 | 8 |
| 15 - 19.9 | 17.5 | 2 | 2 | 10 | 10 | 34.9 | 609.00 |
| 20 - 24.9 | 22.5 | 8 | 8 | 40 | 50 | 179.6 | 4032.0 |
| 25 - 29.9 | 27.5 | 7 | 7 | 35 | 85 | 192.15 | 5274.5 |
| 30 - 34.9 | 32.5 | 3 | 3 | 15 | 100 | 97.35 | 3159.0 |
| 35 - 39.9 | 37.5 | 0 | 0 | 0 | 100 | 0 | 0 |
| 40 - 44.9 | 42.5 | 0 | 0 | 0 | 100 | 0 | 0 |
| 45 - 49.9 | 47.5 | 0 | 0 | 0 | 100 | 0 | 0 |
| 50 - 54.9 | 52.5 | 0 | 0 | 0 | 100 | 0 | 0 |
| 55 - 60 | 57.5 | 0 | 0 | 0 | 100 | 0 | 0 |
| Total | | 20 | | | | 504 | 13074.55 |
| | | | | Kecepatan rata-rata | = | 25.2 | km/jam |
| | | | | Varian | = | 18.6875 | km/jam |
| | | | | Standar Deviasi | = | 4.322904 | km/jam |
| | | | | Standar error | = | 0.966631 | km/jam |



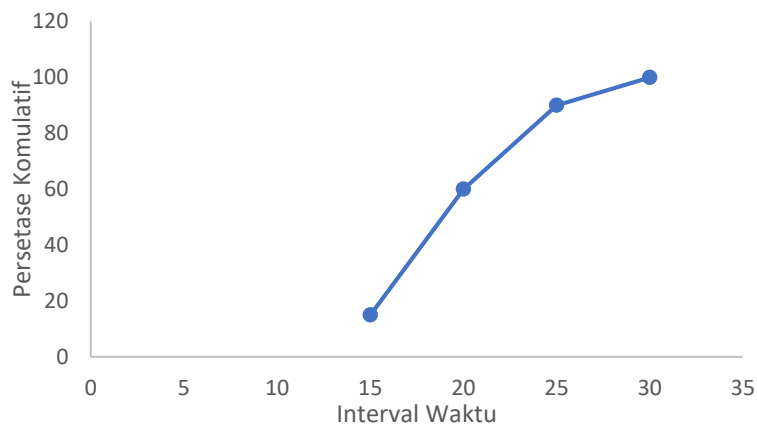
Gambar 3 Grafik kecepatan kendaraan beromotor (MC) Jalan Magelang U

2. Analisis Data Kecepatan Jalan Padjajaran

a. Data Kecepatan Kendaraan Berat (HV) Jalan Padjajaran

Tabel 4 Analisis Data Kecepatan Berat (HV) Jalan Padjajaran

| Interval Kecepatan | Angka tengah (xi) | Jumlah Data (fi) | Jumlah Komulatif | Presentase Data | Persentase komulatif | (fi . xi) | (fi . xi ²) |
|---------------------|-------------------|------------------|------------------|-----------------|----------------------|-----------|-------------------------|
| 1 | 2 | 3 | 4 | 5 | 6 | 7 | 8 |
| 15 - 19.9 | 17.5 | 3 | 3 | 15 | 15 | 52.35 | 913.5075 |
| 20 - 24.9 | 22.5 | 9 | 12 | 45 | 60 | 202.05 | 4536.023 |
| 25 - 29.9 | 27.5 | 6 | 18 | 30 | 90 | 164.7 | 4521.015 |
| 30 - 34.9 | 32.5 | 2 | 20 | 10 | 100 | 64.9 | 2106.005 |
| 35 - 39.9 | 37.5 | 0 | 20 | 0 | 100 | 0 | 0 |
| 40 - 44.9 | 42.5 | 0 | 20 | 0 | 100 | 0 | 0 |
| 45 - 49.9 | 47.5 | 0 | 20 | 0 | 100 | 0 | 0 |
| 50 - 54.9 | 52.5 | 0 | 20 | 0 | 100 | 0 | 0 |
| 55 - 60 | 57.5 | 0 | 20 | 0 | 100 | 0 | 0 |
| Total | | 20 | | | | 484 | 12076.55 |
| Kecepatan rata-rata | | | | | = | 24.2 | km/jam |
| Varian | | | | | = | 18.1875 | km/jam |
| Standar Deviasi | | | | | = | 4.264681 | km/jam |
| Standar error | | | | | = | 0.953612 | km/jam |

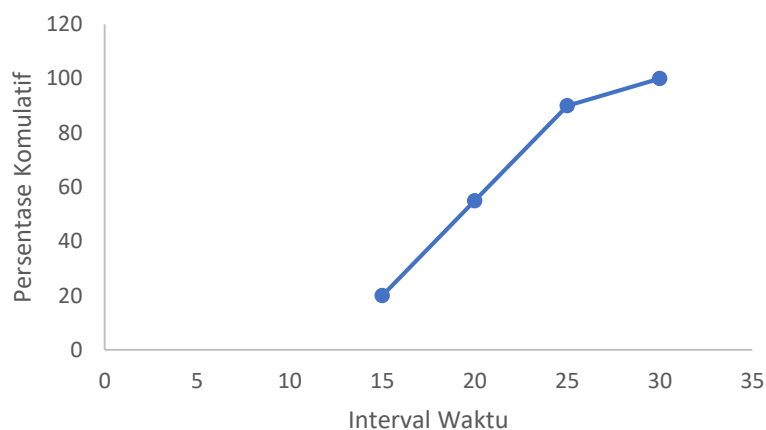


Gambar 4 Grafik kecepatan kendaraan berat (HV) Jalan Padjajaran

b. Data Kecepatan Kendaraan Ringan (LV) Jalan Padjajaran.

Tabel 5 Analisis Data Kecepatan Kendaraan Ringan (LV) Jalan Padjajaran

| Interval Kecepatan | Angka tengah (xi) | Jumlah Data (fi) | Jumlah Komulatif | Presentase Data | Persentase komulati se | (fi . xi) | (fi . xi ²) |
|---------------------|-------------------|------------------|------------------|-----------------|------------------------|-----------|-------------------------|
| 1 | 2 | 3 | 4 | 5 | 6 | 7 | 8 |
| 15 - 19.9 | 17.5 | 4 | 4 | 20 | 20 | 69.8 | 1218.0 |
| 20 - 24.9 | 22.5 | 7 | 11 | 35 | 55 | 157.15 | 3528.0 |
| 25 - 29.9 | 27.5 | 7 | 18 | 35 | 90 | 192.15 | 5274.5 |
| 30 - 34.9 | 32.5 | 2 | 20 | 10 | 100 | 64.9 | 2106.0 |
| 35 - 39.9 | 37.5 | 0 | 20 | 0 | 100 | 0 | 0 |
| 40 - 44.9 | 42.5 | 0 | 20 | 0 | 100 | 0 | 0 |
| 45 - 49.9 | 47.5 | 0 | 20 | 0 | 100 | 0 | 0 |
| 50 - 54.9 | 52.5 | 0 | 20 | 0 | 100 | 0 | 0 |
| 55 - 60 | 57.5 | 0 | 20 | 0 | 100 | 0 | 0 |
| Total | | 20 | | | | 484 | 12126.55 |
| Kecepatan rata-rata | | | | | = | 24.2 | km/jam |
| Varian | | | | | = | 20.6875 | km/jam |
| Standar Deviasi | | | | | = | 4.548351 | km/jam |
| Standar error | | | | | = | 1.017042 | km/jam |

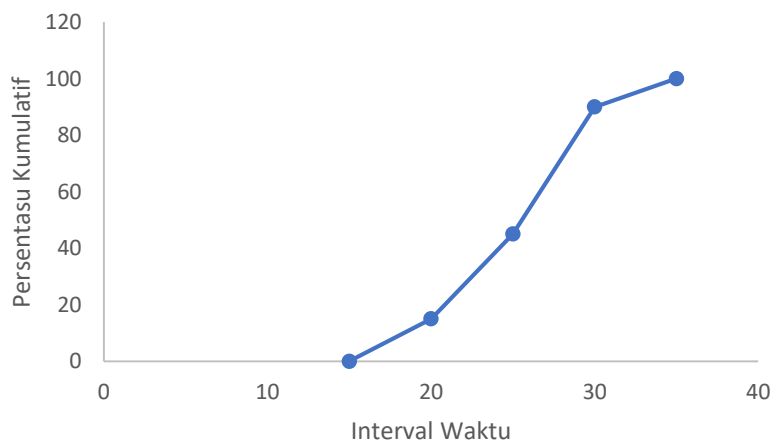


Gambar 5 Grafik kecepatan kendaraan ringan (LV) Jalan Padjajaran

c. Kecepatan Kendaraan Bermotor (MC) Jalan Padjajaran

Tabel 6 Analisis Data Kecepatan Bermotot (MC) Jalan Padjajaran

| Interval Kecepatan | Angka tengah (xi) | Jumlah Data (fi) | Jumlah Komulatif | Presentase Data | Persentase komulatif | (fi . xi) | (fi . xi ²) |
|---------------------|-------------------|------------------|------------------|-----------------|----------------------|-----------|-------------------------|
| 1 | 2 | 3 | 4 | 5 | 6 | 7 | 8 |
| 15 - 19.9 | 17.5 | 0 | 0 | 0 | 0 | 0 | 0 |
| 20 - 24.9 | 22.5 | 3 | 3 | 15 | 15 | 67.35 | 1512.08 |
| 25 - 29.9 | 27.5 | 6 | 9 | 30 | 45 | 164.7 | 4521.015 |
| 30 - 34.9 | 32.5 | 9 | 18 | 45 | 90 | 292.05 | 9477.023 |
| 35 - 39.9 | 37.5 | 2 | 20 | 10 | 100 | 74.9 | 2805.005 |
| 40 - 44.9 | 42.5 | 0 | 20 | 0 | 100 | 0 | 0 |
| 45 - 49.9 | 47.5 | 0 | 20 | 0 | 100 | 0 | 0 |
| 50 - 54.9 | 52.5 | 0 | 20 | 0 | 100 | 0 | 0 |
| 55 - 60 | 57.5 | 0 | 20 | 0 | 100 | 0 | 0 |
| Total | | 20 | | | | 599 | 18315.05 |
| Kecepatan rata-rata | | | | | = | 29.95 | km/jam |
| Varian | | | | | = | 18.75 | km/jam |
| Standar Deviasi | | | | | = | 4.3301 | km/jam |
| Standar error | | | | | = | 0.9682 | km/jam |



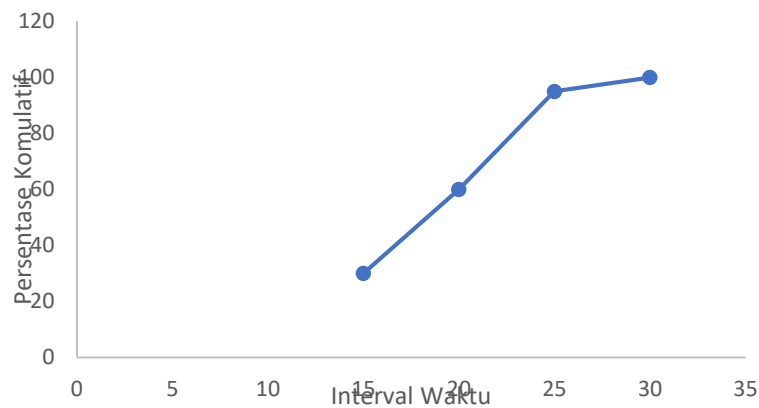
Gambar 6 Grafik kecepatan kendaraan bermotor (MC) Jalan Padjajaran

3. Analisis Kecepatan Kendaraan Jalan Magelang S

a. Kecepatan Kendaraan Berat (HV) Jalan Magelang S

Tabel 7 Analisis Kecepatan Kendararan Berat (HV) Jalan Magelang S

| Interval Kecepatan | Angka tengah (xi) | Jumlah Data (fi) | Jumlah Komulatif | Persentase Data | Persentase komulatif | (fi . xi) | (fi . xi ²) |
|---------------------|-------------------|------------------|------------------|-----------------|----------------------|-----------|-------------------------|
| 1 | 2 | 3 | 4 | 5 | 6 | 7 | 8 |
| 15 - 19.9 | 17.5 | 6 | 6 | 30 | 30 | 104.7 | 1827.015 |
| 20 - 24.9 | 22.5 | 6 | 12 | 30 | 60 | 134.7 | 3024.015 |
| 25 - 29.9 | 27.5 | 7 | 19 | 35 | 95 | 192.15 | 5274.518 |
| 30 - 34.9 | 32.5 | 1 | 20 | 5 | 100 | 32.45 | 1053.003 |
| 35 - 39.9 | 37.5 | 0 | 20 | 0 | 100 | 0 | 0 |
| 40 - 44.9 | 42.5 | 0 | 20 | 0 | 100 | 0 | 0 |
| 45 - 49.9 | 47.5 | 0 | 20 | 0 | 100 | 0 | 0 |
| 50 - 54.9 | 52.5 | 0 | 20 | 0 | 100 | 0 | 0 |
| 55 - 60 | 57.5 | 0 | 20 | 0 | 100 | 0 | 0 |
| Total | | 20 | | | | 464 | 11178.55 |
| Kecepatan rata-rata | | | | | = | 23.2 | km/jam |
| Varian | | | | | = | 20.6875 | km/jam |
| Standar Deviasi | | | | | = | 4.548351 | km/jam |
| Standar error | | | | | = | 1.017042 | km/jam |

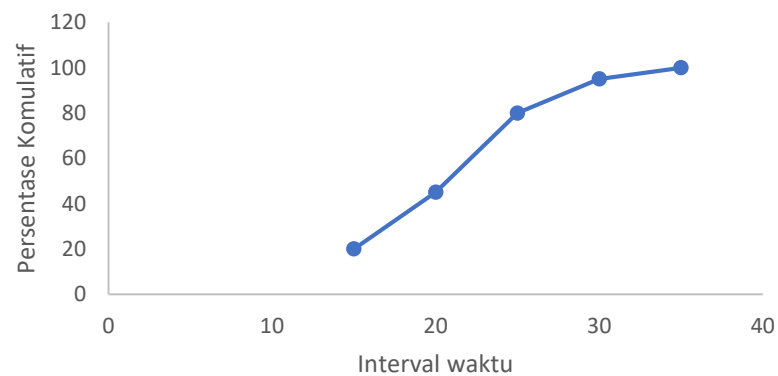


Gambar 7 Grafik kecepatan kendaraan berat (HV) Jalan Magelang S

b. Kecepatan Kendaraan Ringan (LV) Jalan Magelang S

Tabel 8 Analisis Kecepatan Kendaraan Ringan (LV) Jalan Magelang S

| Interval Kecepatan | Angka tengah (xi) | Jumlah Data (fi) | Jumlah Komulatif | Persentase Data | Persentase komulatif | (fi . xi) | (fi . xi ²) |
|---------------------|-------------------|------------------|------------------|-----------------|----------------------|-----------|-------------------------|
| 1 | 2 | 3 | 4 | 5 | 6 | 7 | 8 |
| 15 - 19.9 | 17.5 | 4 | 4 | 20 | 20 | 69.8 | 1218.0 |
| 20 - 24.9 | 22.5 | 5 | 9 | 25 | 45 | 112.25 | 2520.0 |
| 25 - 29.9 | 27.5 | 7 | 16 | 35 | 80 | 192.15 | 5274.5 |
| 30 - 34.9 | 32.5 | 3 | 19 | 15 | 95 | 97.35 | 3159.0 |
| 35 - 39.9 | 37.5 | 1 | 20 | 5 | 100 | 37.45 | 1402.5 |
| 40 - 44.9 | 42.5 | 0 | 20 | 0 | 100 | 0 | 0 |
| 45 - 49.9 | 47.5 | 0 | 20 | 0 | 100 | 0 | 0 |
| 50 - 54.9 | 52.5 | 0 | 20 | 0 | 100 | 0 | 0 |
| 55 - 60 | 57.5 | 0 | 20 | 0 | 100 | 0 | 0 |
| Total | | 20 | | | | 509 | 13574. |
| Kecepatan rata-rata | | | | | = | 25.45 | km/jam |
| Varian | | | | | = | 31 | km/jam |
| Standar Deviasi | | | | | = | 5.5677 | km/jam |
| Standar error | | | | | = | 64 | km/jam |
| | | | | | | 1.2449 | 9 |

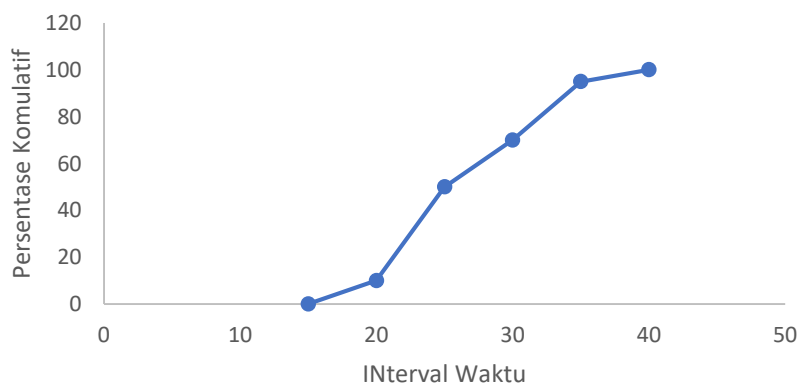


Gambar 8 Grafik kecepatan kendaraan ringan (LV) Jalan Magelang S

c. Kecepatan Kendaraan Bermotor (MC) Jalan Magelang S

Tabel 9 Analisis Kecepatan Kendaraan Bermotor (MC) Jalan Magelang S

| Interval Kecepatan | Angka tengah (xi) | Jumlah Data (fi) | Jumlah Komulatif | Presentase Data | Persentase komulatif | (fi . xi) | (fi . xi ²) |
|---------------------|-------------------|------------------|------------------|-----------------|----------------------|-----------|-------------------------|
| 1 | 2 | 3 | 4 | 5 | 6 | 7 | 8 |
| 15 - 19.9 | 17.5 | 0 | 0 | 0 | 0 | 0 | 0 |
| 20 - 24.9 | 22.5 | 2 | 2 | 10 | 10 | 44.9 | 1008.05 |
| 25 - 29.9 | 27.5 | 8 | 10 | 40 | 50 | 219.6 | 6028.02 |
| 30 - 34.9 | 32.5 | 4 | 14 | 20 | 70 | 129.8 | 4212.01 |
| 35 - 39.9 | 37.5 | 5 | 19 | 25 | 95 | 187.25 | 7012.513 |
| 40 - 44.9 | 42.5 | 1 | 20 | 5 | 100 | 42.45 | 1802.003 |
| 45 - 49.9 | 47.5 | 0 | 20 | 0 | 100 | 0 | 0 |
| 50 - 54.9 | 52.5 | 0 | 20 | 0 | 100 | 0 | 0 |
| 55 - 60 | 57.5 | 0 | 20 | 0 | 100 | 0 | 0 |
| Total | | 20 | | | | 624 | 20062.55 |
| Kecepatan rata-rata | | | | | = | 31.2 | km/jam |
| Varian | | | | | = | 29.6875 | km/jam |
| Standar Deviasi | | | | | = | 5.448624 | km/jam |
| Standar error | | | | | = | 1.218349 | km/jam |

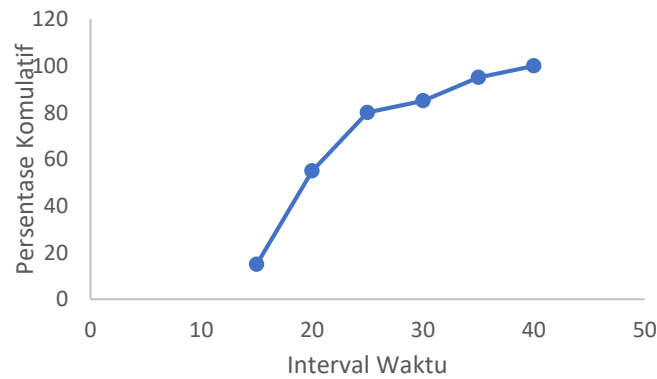


Gambar 9 Grafik kecepatan kendaraan bermotor (MC) Jalan Magelang S

4. Analisis Kecepatan Kendaraan Jalan Siliwangi
 a. Kecepatan Kendaraan Berat (HV) Jalan Siliwangi

Tabel 10 Analisis Kecepatan Kendaraan Berat (HV) Jalan Siliwangi

| Interval Kecepatan | Angka tengah (xi) | Jumlah Data (fi) | Jumlah Kumulatif | Persentase Data | Persentase kumulatif | (fi . xi) | (fi . xi ²) |
|---------------------|-------------------|------------------|------------------|-----------------|----------------------|-----------|-------------------------|
| 1 | 2 | 3 | 4 | 5 | 6 | 7 | 8 |
| 15 - 19.9 | 17.5 | 3 | 3 | 15 | 15 | 52.35 | 913.5075 |
| 20 - 24.9 | 22.5 | 8 | 11 | 40 | 55 | 179.6 | 4032.02 |
| 25 - 29.9 | 27.5 | 5 | 16 | 25 | 80 | 137.25 | 3767.513 |
| 30 - 34.9 | 32.5 | 1 | 17 | 5 | 85 | 32.45 | 1053.003 |
| 35 - 39.9 | 37.5 | 2 | 19 | 10 | 95 | 74.9 | 2805.005 |
| 40 - 44.9 | 42.5 | 1 | 20 | 5 | 100 | 42.45 | 1802.003 |
| 45 - 49.9 | 47.5 | 0 | 20 | 0 | 100 | 0 | 0 |
| 50 - 54.9 | 52.5 | 0 | 20 | 0 | 100 | 0 | 0 |
| 55 - 60 | 57.5 | 0 | 20 | 0 | 100 | 0 | 0 |
| Total | | 20 | | | | 519 | 14373 |
| Kecepatan rata-rata | | | | | = | 25.95 | km/jam |
| Varian | | | | | = | 45.25 | km/jam |
| Standar Deviasi | | | | | = | 6.7268 | km/jam |
| Standar error | | | | | = | 1.5041 | km/jam |
| | | | | | | 12 | 61 |

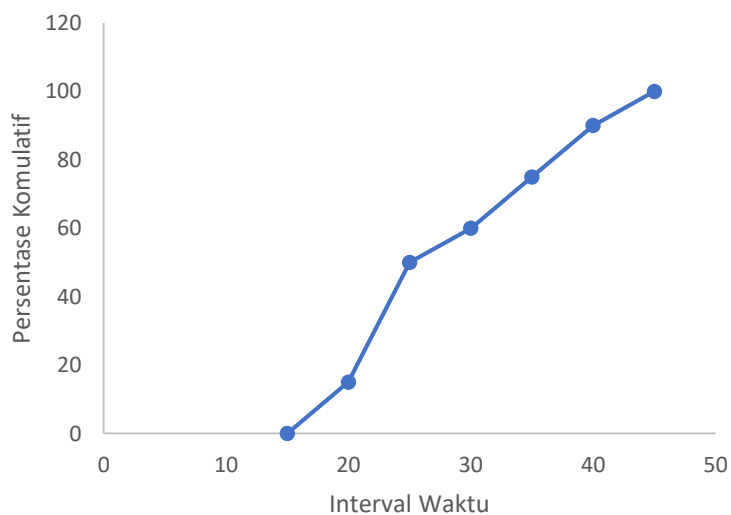


Gambar 10 Grafik kecepatan kendaran berat (HV) Jalan Siliwangi

b. Kecepatan Kendaraan Ringan (LV) Jalan Siliwangi

Tabel 11 Analisis Kecepatan Kendaraan Ringan (LV) Jalan Siliwangi

| Interval Kecepatan | Angka tengah (xi) | Jumlah Data (fi) | Jumlah Komulatif | Presentase Data | Persentase komulatif | (fi . xi) | (fi . xi ²) |
|---------------------|-------------------|------------------|------------------|-----------------|----------------------|-----------|-------------------------|
| 1 | 2 | 3 | 4 | 5 | 6 | 7 | 8 |
| 15 - 19.9 | 17.5 | 0 | 0 | 0 | 0 | 0 | 0 |
| 20 - 24.9 | 22.5 | 3 | 3 | 15 | 15 | 67.35 | 1512.008 |
| 25 - 29.9 | 27.5 | 7 | 10 | 35 | 50 | 192.15 | 5274.518 |
| 30 - 34.9 | 32.5 | 2 | 12 | 10 | 60 | 64.9 | 2106.005 |
| 35 - 39.9 | 37.5 | 3 | 15 | 15 | 75 | 112.35 | 4207.508 |
| 40 - 44.9 | 42.5 | 3 | 18 | 15 | 90 | 127.35 | 5406.008 |
| 45 - 49.9 | 47.5 | 2 | 20 | 10 | 100 | 94.9 | 4503.005 |
| 50 - 54.9 | 52.5 | 0 | 20 | 0 | 100 | 0 | 0 |
| 55 - 60 | 57.5 | 0 | 20 | 0 | 100 | 0 | 0 |
| Total | | 20 | | | | 659 | 23009 |
| Kecepatan rata-rata | | | | | = | 32.95 | km/jam |
| Varian | | | | | = | 64.75 | km/jam |
| Standar Deviasi | | | | | = | 8.046738 | km/jam |
| Standar error | | | | | = | 1.799305 | km/jam |



Gambar 11 Grafik kecepatan kendaraan ringan (LV) Jalan Siliwangi

LAMPIRAN 2
(LOKASI SURVEY)

1. Lengan A

- Dari arah Selatan ke Utara



- Dari arah Utara ke Selatan



2. Lengan B

- Dari arah Timur ke Barat



- Dari arah Barat ke Timur



3. Lengan C

- Dari arah utara ke selatan



- Dari arah selatan ke utara



4. Lengan D

- Dari arah Timur ke Barat



- Dari arah Barat ke Timur



LAMPIRAN 3
(DATA LALU LINTAS)

Ruas : Lengan A Arah : Utara - Selatan
 Hari/ Tanggal : Senin/ 14 mei 2018

| PERIODE WAKTU | JENIS KENDARAAN | | | | JUMLAH (kend.) |
|---------------|-----------------|------|------|----|-------------------|
| | HV | LV | MC | UM | |
| 06.00 - 07.00 | 44 | 1011 | 4415 | 10 | 5480 |
| 06.15 - 07.15 | 37 | 785 | 4534 | 11 | 5367 |
| 06.30-07.30 | 41 | 703 | 4273 | 12 | 5029 |
| 06.45-07.45 | 43 | 670 | 3600 | 13 | 4326 |
| 07.00 - 08.00 | 43 | 629 | 2842 | 8 | 3522 |
| 12.00 - 13.00 | 50 | 786 | 1729 | 2 | 2567 |
| 12.15 - 13.15 | 52 | 836 | 1800 | 2 | 2690 |
| 12.30 - 13.30 | 54 | 849 | 1744 | 3 | 2650 |
| 12.45 - 13.45 | 51 | 825 | 1619 | 4 | 2499 |
| 13.00 - 14.00 | 62 | 856 | 1582 | 2 | 2502 |
| 17.00 - 18.00 | 22 | 812 | 2122 | 9 | 2965 |
| 17.15 - 18.15 | 20 | 771 | 1870 | 6 | 2667 |
| 17.30 - 18.30 | 28 | 728 | 1613 | 4 | 2373 |
| 17.45 - 18.45 | 32 | 731 | 1384 | 3 | 2150 |
| 18.00 - 19.00 | 31 | 709 | 1310 | 2 | 2052 |

Ruas : Lengan A Arah : Selatan - Utara
 Hari/ Tanggal : Senin/ 14 mei 2018

| PERIODE WAKTU | JENIS KENDARAAN | | | | JUMLAH (kend.) |
|---------------|-----------------|------|------|----|-------------------|
| | HV | LV | MC | UM | |
| 06.00 - 07.00 | 33 | 747 | 2811 | 12 | 3603 |
| 06.15 - 07.15 | 48 | 841 | 3030 | 10 | 3929 |
| 06.30-07.30 | 46 | 865 | 2982 | 7 | 3900 |
| 06.45-07.45 | 59 | 851 | 2778 | 4 | 3692 |
| 07.00 - 08.00 | 60 | 821 | 2550 | 5 | 3436 |
| 12.00 - 13.00 | 38 | 1136 | 1958 | 2 | 3134 |
| 12.15 - 13.15 | 39 | 1147 | 1932 | 2 | 3120 |
| 12.30 - 13.30 | 38 | 1234 | 2038 | 2 | 3312 |
| 12.45 - 13.45 | 42 | 1244 | 2244 | 3 | 3533 |
| 13.00 - 14.00 | 49 | 1240 | 2526 | 5 | 3820 |
| 17.00 - 18.00 | 42 | 1419 | 3630 | 7 | 5098 |
| 17.15 - 18.15 | 46 | 1385 | 3403 | 8 | 4842 |
| 17.30 - 18.30 | 40 | 1296 | 3220 | 8 | 4564 |
| 17.45 - 18.45 | 32 | 1242 | 2981 | 10 | 4265 |
| 18.00 - 19.00 | 30 | 1185 | 2869 | 8 | 4092 |

Ruas : Lengan B Arah : Timur - Barat
 Hari/ Tanggal : Senin/ 14 mei 2018

| PERIODE WAKTU | JENIS KENDARAAN | | | | | | JUMLAH (kend.) |
|---------------|-----------------|----|-----|-----|------|----|-------------------|
| | LT | LB | MHV | LV | MC | UM | |
| 06.00 - 07.00 | 14 | 8 | 18 | 296 | 1002 | 3 | 1341 |
| 06.15 - 07.15 | 8 | 8 | 17 | 302 | 1001 | 4 | 1340 |
| 06.30-07.30 | 12 | 9 | 25 | 300 | 1134 | 9 | 1489 |
| 06.45-07.45 | 15 | 8 | 25 | 290 | 1082 | 12 | 1432 |
| 07.00 - 08.00 | 11 | 9 | 27 | 284 | 1025 | 12 | 1368 |
| 12.00 - 13.00 | 8 | 5 | 36 | 221 | 400 | 12 | 682 |
| 12.15 - 13.15 | 9 | 5 | 40 | 237 | 381 | 10 | 682 |
| 12.30 - 13.30 | 10 | 7 | 44 | 264 | 360 | 8 | 693 |
| 12.45 - 13.45 | 10 | 7 | 44 | 255 | 365 | 1 | 682 |
| 13.00 - 14.00 | 6 | 10 | 36 | 256 | 393 | 2 | 703 |
| 17.00 - 18.00 | 12 | 3 | 24 | 313 | 657 | 7 | 1016 |
| 17.15 - 18.15 | 5 | 5 | 22 | 294 | 572 | 7 | 905 |
| 17.30 - 18.30 | 4 | 6 | 23 | 283 | 555 | 6 | 877 |
| 17.45 - 18.45 | 2 | 7 | 21 | 246 | 538 | 6 | 820 |
| 18.00 - 19.00 | 2 | 6 | 20 | 228 | 501 | 3 | 760 |

Ruas : Lengan B Arah : Timur - Barat
 Hari/ Tanggal : Senin/ 14 mei 2018

| PERIODE WAKTU | JENIS KENDARAAN | | | | | | JUMLAH (kend.) |
|---------------|-----------------|----|-----|-----|------|----|-------------------|
| | LT | LB | MHV | LV | MC | UM | |
| 06.00 - 07.00 | 13 | 18 | 33 | 564 | 2135 | 6 | 2769 |
| 06.15 - 07.15 | 8 | 19 | 39 | 556 | 2445 | 8 | 3075 |
| 06.30-07.30 | 8 | 17 | 39 | 541 | 2561 | 10 | 3176 |
| 06.45-07.45 | 10 | 17 | 52 | 513 | 2287 | 10 | 2889 |
| 07.00 - 08.00 | 10 | 19 | 58 | 497 | 1960 | 6 | 2550 |
| 12.00 - 13.00 | 10 | 8 | 53 | 507 | 948 | 1 | 1527 |
| 12.15 - 13.15 | 13 | 9 | 60 | 509 | 918 | 1 | 1510 |
| 12.30 - 13.30 | 13 | 14 | 62 | 529 | 852 | 2 | 1472 |
| 12.45 - 13.45 | 13 | 18 | 65 | 513 | 783 | 3 | 1395 |
| 13.00 - 14.00 | 13 | 11 | 61 | 486 | 751 | 3 | 1325 |
| 17.00 - 18.00 | 22 | 4 | 19 | 427 | 1069 | 3 | 1544 |
| 17.15 - 18.15 | 20 | 5 | 21 | 410 | 998 | 3 | 1457 |
| 17.30 - 18.30 | 24 | 3 | 31 | 369 | 972 | 3 | 1402 |
| 17.45 - 18.45 | 22 | 2 | 37 | 349 | 861 | 2 | 1273 |
| 18.00 - 19.00 | 13 | 2 | 38 | 343 | 843 | 1 | 1240 |

Ruas : Lengan C Arah : Selatan - Utara
 Hari/ Tanggal : Senin/ 14 mei 2018

| PERIODE WAKTU | JENIS KENDARAAN | | | | JUMLAH (kend.) |
|---------------|-----------------|------|------|----|-------------------|
| | HV | LV | MC | UM | |
| 06.00 - 07.00 | 96 | 1127 | 5063 | 7 | 6293 |
| 06.15 - 07.15 | 77 | 905 | 4892 | 6 | 5880 |
| 06.30-07.30 | 86 | 803 | 4479 | 9 | 5377 |
| 06.45-07.45 | 90 | 777 | 4020 | 11 | 4898 |
| 07.00 - 08.00 | 91 | 742 | 3344 | 11 | 4188 |
| 12.00 - 13.00 | 133 | 781 | 1933 | 2 | 2849 |
| 12.15 - 13.15 | 131 | 815 | 1971 | 1 | 2918 |
| 12.30 - 13.30 | 140 | 838 | 1981 | 1 | 2960 |
| 12.45 - 13.45 | 141 | 843 | 1890 | 1 | 2875 |
| 13.00 - 14.00 | 143 | 874 | 1895 | 2 | 2914 |
| 17.00 - 18.00 | 84 | 796 | 2043 | 7 | 2930 |
| 17.15 - 18.15 | 75 | 739 | 1836 | 2 | 2652 |
| 17.30 - 18.30 | 77 | 725 | 1657 | 0 | 2459 |
| 17.45 - 18.45 | 69 | 730 | 1505 | 1 | 2305 |
| 18.00 - 19.00 | 71 | 735 | 1482 | 1 | 2289 |

Ruas : Lengan C Arah : Selatan - Utara
 Hari/ Tanggal : Senin/ 14 mei 2018

| PERIODE WAKTU | JENIS KENDARAAN | | | | JUMLAH (kend.) |
|---------------|-----------------|------|------|----|-------------------|
| | HV | LV | MC | UM | |
| 06.00 - 07.00 | 63 | 777 | 2222 | 3 | 3065 |
| 06.15 - 07.15 | 82 | 874 | 2619 | 3 | 3578 |
| 06.30-07.30 | 75 | 936 | 2822 | 4 | 3837 |
| 06.45-07.45 | 95 | 923 | 2778 | 5 | 3801 |
| 07.00 - 08.00 | 100 | 921 | 2693 | 8 | 3722 |
| 12.00 - 13.00 | 79 | 1149 | 2196 | 10 | 3434 |
| 12.15 - 13.15 | 91 | 1139 | 2239 | 10 | 3479 |
| 12.30 - 13.30 | 102 | 1201 | 2285 | 7 | 3595 |
| 12.45 - 13.45 | 114 | 1235 | 2436 | 5 | 3790 |
| 13.00 - 14.00 | 110 | 1246 | 2649 | 4 | 4009 |
| 17.00 - 18.00 | 76 | 1334 | 4150 | 9 | 5569 |
| 17.15 - 18.15 | 80 | 1302 | 3973 | 6 | 5361 |
| 17.30 - 18.30 | 77 | 1226 | 3686 | 3 | 4992 |
| 17.45 - 18.45 | 69 | 1191 | 3280 | 6 | 4546 |
| 18.00 - 19.00 | 56 | 1182 | 3058 | 7 | 4303 |

Ruas : Lengan D Arah : Timur - Barat
 Hari/ Tanggal : Senin/ 14 mei 2018

| PERIODE WAKTU | JENIS KENDARAAN | | | | | | JUMLAH (kend.) |
|------------------|-----------------|----|-----|-----|------|----|-------------------|
| | LT | LB | MHV | LV | MC | UM | |
| 06.00 - 07.00 | 1 | 0 | 5 | 305 | 899 | 2 | 1212 |
| 06.15 - 07.15 | 1 | 1 | 10 | 315 | 1033 | 5 | 1365 |
| 06.30-07.30 | 1 | 5 | 13 | 332 | 1099 | 9 | 1459 |
| 06.45-07.45 | 1 | 5 | 13 | 347 | 1121 | 12 | 1499 |
| 07.00 - 08.00 | 0 | 6 | 11 | 344 | 1140 | 12 | 1513 |
| 12.00 - 13.00 | 4 | 3 | 14 | 355 | 864 | 20 | 1260 |
| 12.15 - 13.15 | 5 | 5 | 21 | 390 | 961 | 18 | 1400 |
| 12.30 - 13.30 | 5 | 7 | 25 | 432 | 963 | 13 | 1445 |
| 12.45 - 13.45 | 1 | 6 | 28 | 408 | 945 | 3 | 1391 |
| 13.00 - 14.00 | 1 | 8 | 32 | 428 | 934 | 1 | 1404 |
| 17.00 - 18.00 | 3 | 0 | 19 | 404 | 1489 | 12 | 1927 |
| 17.15 - 18.15 | 3 | 0 | 19 | 394 | 1433 | 8 | 1857 |
| 17.30 - 18.30 | 3 | 0 | 16 | 393 | 1306 | 2 | 1720 |
| 17.45 - 18.45 | 1 | 0 | 15 | 381 | 1117 | 2 | 1516 |
| 18.00 - 19.00 | 1 | 0 | 12 | 346 | 927 | 2 | 1288 |

Ruas : Lengan D Arah : Barat - Timur
 Hari/ Tanggal : Senin/ 14 mei 2018

| PERIODE WAKTU | JENIS KENDARAAN | | | | | | JUMLAH (kend.) |
|------------------|-----------------|----|-----|-----|------|----|-------------------|
| | LT | LB | MHV | LV | MC | UM | |
| 06.00 - 07.00 | 3 | 9 | 40 | 659 | 3269 | 11 | 3991 |
| 06.15 - 07.15 | 1 | 8 | 42 | 656 | 3246 | 11 | 3964 |
| 06.30-07.30 | 0 | 8 | 45 | 602 | 2892 | 10 | 3557 |
| 06.45-07.45 | 0 | 10 | 51 | 605 | 2746 | 7 | 3419 |
| 07.00 - 08.00 | 2 | 11 | 52 | 570 | 2434 | 6 | 3075 |
| 12.00 - 13.00 | 15 | 10 | 60 | 623 | 1378 | 1 | 2087 |
| 12.15 - 13.15 | 17 | 9 | 60 | 649 | 1362 | 0 | 2097 |
| 12.30 - 13.30 | 13 | 9 | 65 | 719 | 1445 | 0 | 2251 |
| 12.45 - 13.45 | 12 | 15 | 61 | 693 | 1442 | 0 | 2223 |
| 13.00 - 14.00 | 15 | 22 | 57 | 670 | 1482 | 3 | 2249 |
| 17.00 - 18.00 | 12 | 6 | 38 | 587 | 1302 | 4 | 1949 |
| 17.15 - 18.15 | 13 | 7 | 37 | 561 | 1255 | 2 | 1875 |
| 17.30 - 18.30 | 14 | 5 | 37 | 546 | 1301 | 0 | 1903 |
| 17.45 - 18.45 | 13 | 5 | 29 | 534 | 1262 | 0 | 1843 |
| 18.00 - 19.00 | 18 | 8 | 26 | 490 | 1252 | 0 | 1794 |