

LAMPIRAN



Fakultas Kedokteran dan Ilmu Kesehatan Universitas Muhammadiyah Yogyakarta

Nomor : 646/EP-FKIK-UMY/XII/2017

KETERANGAN LOLOS UJI ETIK **ETHICAL APPROVAL**

Komite Etik Penelitian Fakultas Kedokteran dan Ilmu Kesehatan Universitas Muhammadiyah Yogyakarta dalam upaya melindungi hak asasi dan kesejahteraan responden/subyek penelitian, telah mengkaji dengan teliti protokol berjudul :

The Ethics Committee of the Faculty of Medicine and Health Sciences, University of Muhammadiyah Yogyakarta, with regards of the protection of human rights and welfare in research, has carefully reviewed the research protocol entitled :

“Pengaruh Ekstrak Etanol Daun Sirsak (*Annona muricata L.*) Dalam Menghambat Migrasi Sel Kanker Serviks Secara In Vitro”

Peneliti Utama : Indira Putri Fiana Dewi
Principal Investigator

Nama Institusi : Program Studi Kedokteran FKIK UMY
Name of the Institution

Negara : Indonesia
Country

Dan telah menyetujui protokol tersebut diatas.
And approved the above-mentioned protocol.

Yogyakarta, 12 Desember 2017

Sekretaris
Secretary

Dr. dr. Titiek Hidayati, M.Kes.

*Peneliti Berkewajiban :

1. Menjaga kerahasiaan identitas subyek penelitian
2. Memberitahukan status penelitian apabila :
 - a. Setelah masa berlakunya keterangan lolos uji etik, penelitian masih belum selesai, dalam hal ini *ethical clearance* harus diperpanjang
 - b. Penelitian berhenti di tengah jalan
3. Melaporkan kejadian serius yang tidak diinginkan (*serious adverse events*)
4. Peneliti tidak boleh melakukan tindakan apapun pada responden/subyek sebelum penelitian lolos uji etik

Kampus:

Jl. Lingkar Selatan, Tamantirto, Kasihan, Bantul, Yogyakarta 55183
Telp. (0274) 387656 ext. 213, 7491350 Fax. (0274) 387658

Muda mendunia

Jam ke-0



Kontrol Sel



$\frac{1}{2}$ Doxorubicin



$\frac{1}{8}$ IC50



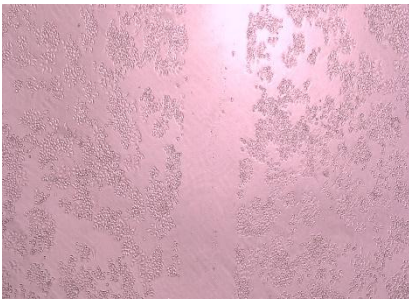
$\frac{1}{4}$ IC50



$\frac{1}{3}$ IC50



$\frac{1}{2}$ IC50

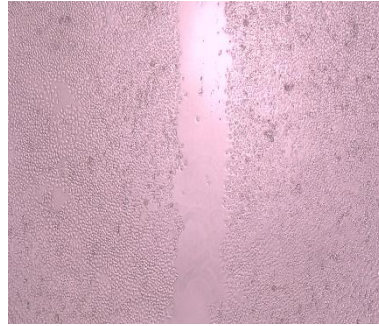


IC 50

Jam ke-24



Kontrol



$\frac{1}{2}$ Doxorubicin



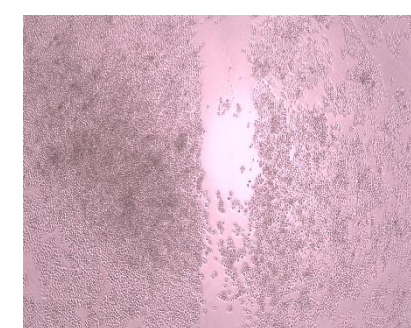
$\frac{1}{8}$ IC50



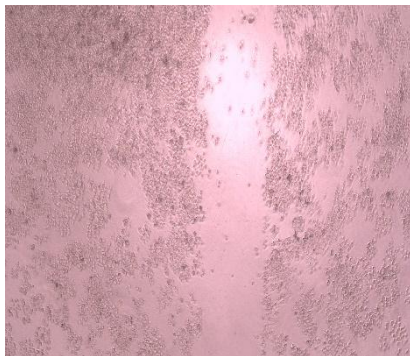
$\frac{1}{4}$ IC50



$\frac{1}{3}$ IC50

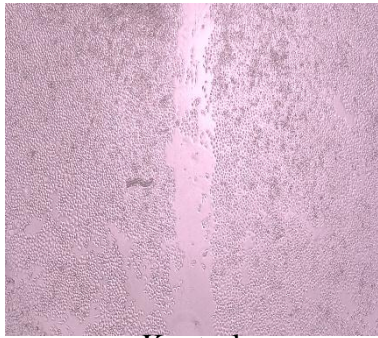


$\frac{1}{2}$ IC50

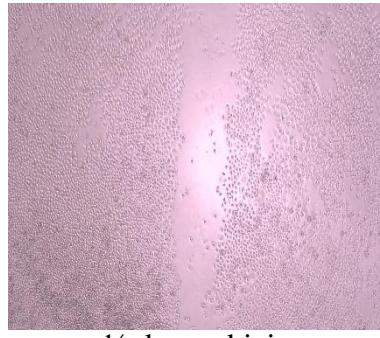


IC 50

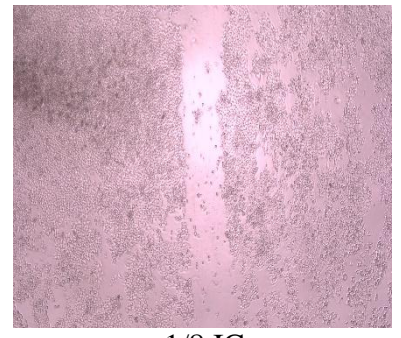
Jam ke- 29



Kontrol



$\frac{1}{2}$ doxorubicin

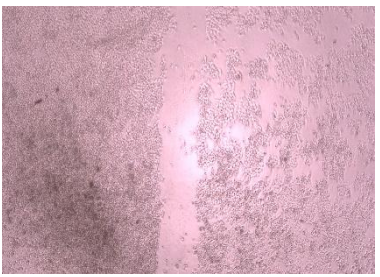


$\frac{1}{8}$ IC

50



$\frac{1}{4}$ IC 50



$\frac{1}{3}$ IC50

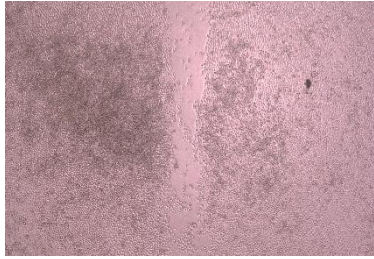


$\frac{1}{2}$ IC50

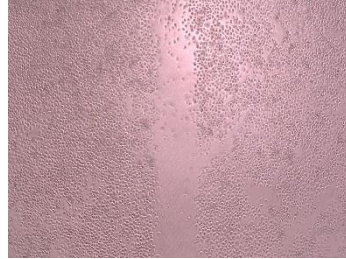


IC50

Jam ke-36



Kontrol



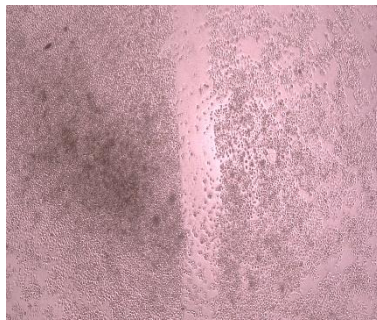
$\frac{1}{2}$ doxorubicin



$\frac{1}{8}$ IC50



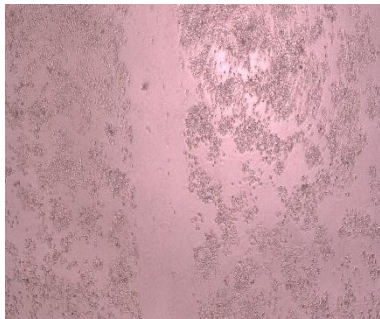
$\frac{1}{4}$ IC50



$\frac{1}{3}$ IC50

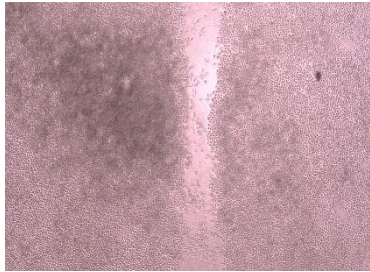


$\frac{1}{2}$ IC50



IC50

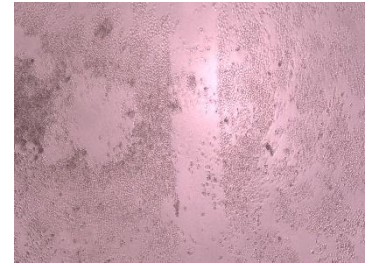
Jam ke-42



Kontrol



$\frac{1}{2}$ doxorubicin



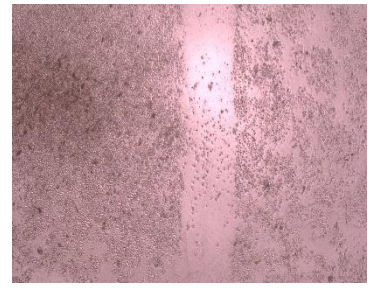
$\frac{1}{8}$ IC50



$\frac{1}{4}$ IC50



$\frac{1}{3}$ IC50

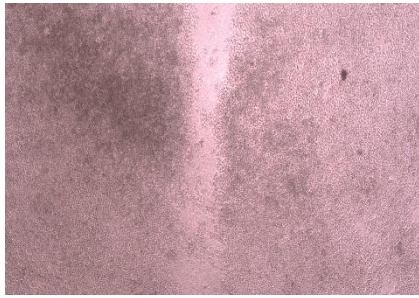


$\frac{1}{2}$ IC50



IC50

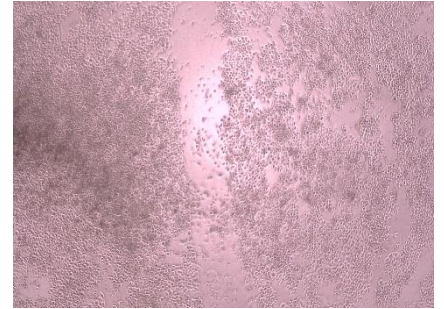
Jam ke-47



Kontrol



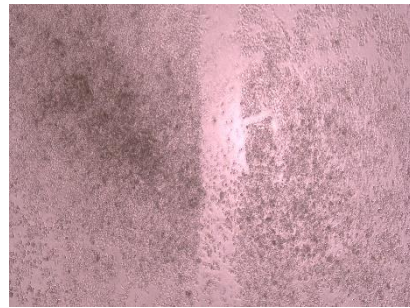
$\frac{1}{2}$ doxorubicin



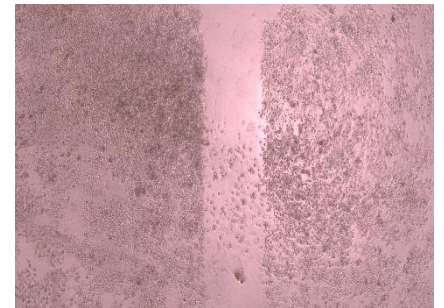
$\frac{1}{8}$ IC50



$\frac{1}{4}$ IC50



$\frac{1}{3}$ IC50



$\frac{1}{2}$ IC50



IC50

HASIL RERATA MIGRASI EKSTRAK DAUN TEH HITAM (*Camellia Sinensis*)

Waktu	Kontrol	Doxo	dosis 1/8	dosis 1/4	dosis 1/3	dosis 1/2	IC 50
0	53590156,8 µg/mL ± 13684,6375	93971653,79 µg/mL ± 8186,882313	76204488,3 µg/mL ± 49873,6555	64038551,3 µg/mL ± 36355,8952	65873833,4 µg/mL ± 63427,47827	74074857,3 µg/mL ± 8358,00215	82707416,6 µg/mL ± 22762,47439
12	40527017,8 µg/mL ± 11398,5613	86043679,78 µg/mL ± 91364,56009	63563756,6 µg/mL ± 39163,8162	51687405,9 µg/mL ± 41101,2888	55126724,3 µg/mL ± 7878,583756	58538129 µg/mL ± 68109,2323	70812016 µg/mL ± 87759,02261
24	38079093,1 µg/mL ± 9625,13751	81962746,97 µg/mL ± 141393,072	57904452 µg/mL ± 10676,6053	44385039,1 µg/mL ± 59793,6565	53136528,7 µg/mL ± 2351,837154	56336134,5 µg/mL ± 68282,4734	63258692 µg/mL ± 19772,11982
36	35365262,2 µg/mL ± 20849,7506	74160714,62 µg/mL ± 28869,04856	44040948,6 µg/mL ± 937,623592	27922004,8 µg/mL ± 2725,18953	49835058,3 µg/mL ± 6263,551868	53285489,1 µg/mL ± 59316,3594	57100383,4 µg/mL ± 18483,77126