

LAMPIRAN

Lampran 1

	LEVERAGE	ROE	SIZE	AGE	UNDERWRITER	RETRUN
Mean	0.120776	0.070253	0.863119	0.224450	0.070064	0.095655
Median	0.132455	0.073210	0.865455	0.205828	0.000000	0.104349
Maximum	0.156420	0.148598	0.916469	0.358052	0.164990	0.305120
Minimum	0.028470	0.001217	0.750805	0.113965	0.000000	0.013749
Std. Dev.	0.032267	0.036157	0.026567	0.057984	0.082117	0.057619
Skewness	-1.084406	0.098190	1.602494	0.400432	0.304851	0.989713
Kurtosis	3.217629	2.433216	7.844960	2.033871	1.092934	4.494918
Jarque-Bera	14.45127	1.094418	102.6428	4.789979	12.19294	18.71510
Probability	0.000728	0.578562	0.000000	0.091174	0.002251	0.000086
Sum	8.816653	5.128462	63.00767	16.38484	5.114690	6.982804
Sum Sq. Dev.	0.074965	0.094126	0.050817	0.242078	0.485516	0.239034
Observations	73	73	73	73	73	73

Lampiran 2

Dependent Variable: RETRUN

Method: Least Squares

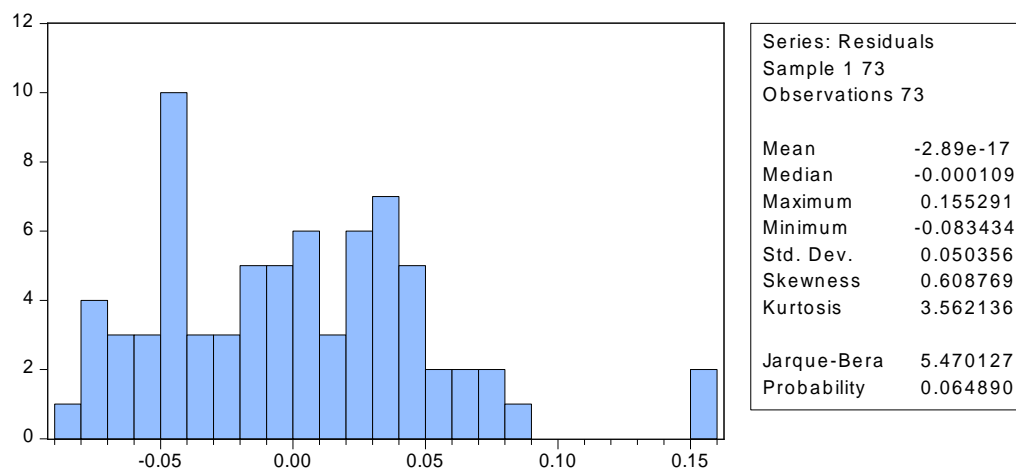
Date: 10/07/18 Time: 22:07

Sample: 1 73

Included observations: 73

Variable	Coefficient	Std. Error	t-Statistic	Prob.
C	0.350567	0.206551	1.697237	0.0943
LEVERAGE	-0.076005	0.204556	-0.371561	0.7114
ROE	-0.408458	0.187728	-2.175796	0.0331
SIZE	-0.323212	0.245451	-1.316804	0.1924
AGE	0.301584	0.106824	2.823175	0.0063
UNDERWRITER	-0.082177	0.082001	-1.002140	0.3199
R-squared	0.236213	Mean dependent var	0.095655	
Adjusted R-squared	0.179214	S.D. dependent var	0.057619	
S.E. of regression	0.052201	Akaike info criterion	-2.988816	
Sum squared resid	0.182571	Schwarz criterion	-2.800559	
Log likelihood	115.0918	Hannan-Quinn criter.	-2.913792	
F-statistic	4.144163	Durbin-Watson stat	1.838880	
Prob(F-statistic)	0.002436			

Lampiran 3 Normalitas



Lampiran 4 Autokorelasi

R-squared	0.236213	Mean dependent var	0.095655
Adjusted R-squared	0.179214	S.D. dependent var	0.057619
S.E. of regression	0.052201	Akaike info criterion	-2.988816
Sum squared resid	0.182571	Schwarz criterion	-2.800559
Log likelihood	115.0918	Hannan-Quinn criter.	-2.913792
F-statistic	4.144163	Durbin-Watson stat	1.838880
Prob(F-statistic)	0.002436		

Lampiran 5 Heteroskedastisitas

Heteroskedasticity Test: Harvey

F-statistic	0.534346	Prob. F(5,67)	0.7495
Obs*R-squared	2.799360	Prob. Chi-Square(5)	0.7309
Scaled explained SS	2.902356	Prob. Chi-Square(5)	0.7150

Lampiran 6 Multikolinieritas

Variance Inflation Factors

Date: 10/07/18 Time: 22:21

Sample: 1 73

Included observations: 73

Variable	Coefficient Variance	Uncentered VIF	Centered VIF
C	0.042663	1142.938	NA
LEVERAGE	0.041843	17.50243	1.151136
ROE	0.035242	5.876990	1.217338
SIZE	0.060246	1203.495	1.123521
AGE	0.011411	16.41471	1.013774
UNDERWRITER	0.006724	2.082396	1.198091

Lampiran 7

Jumlah sampel

No.	Kode Saham	Nama Perusahaan
1	ACST	Acset Indonusa Tbk, PT
2	AGII	Aneka Gas Industri Tbk
3	AGRS	Bank Agris Tbk, PT
4	APII	Arita Prima Indonesia Tbk, PT
5	ARTO	Bank Artos Indonesia Tbk
6	ATIC	Anabatic Technologies Tbk, PT
7	BBHI	Bank Harda Internasional Tbk, PT
8	BBMD	Bank Mestika Dharma Tbk, PT
9	BBYB	Bank Yudha Bakti Tbk, PT
10	BELL	Trisula Textile Industries Tbk
11	BIKA	Binakarya Jaya Abadi Tbk, PT
12	BIRD	Blue Bird Tbk, PT
13	BMAS	Bank Maspion Indonesia Tbk, PT
14	BOGA	Bintang Oto Global Tbk
15	BOLT	Garuda Metalindo Tbk, PT
16	BPII	Batavia Prosperindo Internasional Tbk, PT
17	CAMP	Campina Ice Cream Industry Tbk
18	CINT	Chitose Internasional Tbk, PT
19	CLEO	Sariguna Primatira Tbk, PT

20	CSIS	Cahayasakti Investindo Sukses Tbk, PT
21	DAYA	Duta Intidaya Tbk
22	DMAS	Puradelta Lestari Tbk, PT
23	DNAR	Bank Dinar Indonesia Tbk, PT
24	DPUM	Dua Putra Utama Makmur Tbk
25	DWGL	Dwi Guna Laksana Tbk
26	DYAN	Dyandra Media Internasional Tbk, PT
27	FINN	First Indo American Leasing Tbk, PT
28	FIRE	Alfa Energi Investama Tbk, PT
29	FORZ	Forza Land Indonesia Tbk, PT
30	HOKI	Buyung Poetra Sembada Tbk, PT
31	HOTL	Saraswati Griya Lestari Tbk, PT
32	IBFN	Intan Baruprana Finance Tbk, PT
33	IDPR	Indonesia Pondasi Raya Tbk
34	IMJS	Indomobil Multijasa Tbk, PT
35	IMPC	Impack Pratama Industri Tbk, PT
36	IPCM	Jasa Armada Indonesia Tbk
37	JGLE	Graha Ardasentra Propertindo Tbk
38	JMAS	Asuransi Jiwa Syariah Jasa Mitra Abadi Tbk
39	KINO	Kino Indonesia Tbk
40	KMTR	Kirana Megatara Tbk, PT
41	KRAH	Grand Kartech Tbk, PT
42	LINK	Link Net Tbk, PT
43	MAPB	MAP Boga Adiperkasa Tbk, PT
44	MARI	Mahaka Radio Intrega Tbk
45	MARK	Mark Dynamics Indonesia Tbk, PT
46	MDIA	Intermedia Capital Indonesia Tbk, PT
47	MGNA	Magna Finance Tbk, PT
48	MIKA	Mitra Keluarga Karyasehat Tbk, PT
49	MINA	Sanurhasta Mitra Tbk, PT
50	MLPT	Multipolar Technology Tbk, PT
51	MMLP	Mega Manunggal Properti Tbk, PT
52	MPOW	Megapower Makmur Tbk, PT
53	MTRA	Mitra Pemuda Tbk
54	MTWI	Malacca Trust Wuwungan Insurance Tbk
55	NASA	Ayana Land Internasional Tbk, PT
56	NOBU	Bank Nationalnobu Tbk, PT
57	NRCA	Nusa Raya Cipta Tbk, PT
58	OASA	Protech Mitra Perkasa Tbk

59	PBSA	Paramita Bangun Sarana Tbk
60	POWR	Cikarang Listrindo Tbk
61	PRDA	Prodia Widyahusada Tbk
62	SHIP	Sillo Maritime Perdana Tbk
63	SIDO	Industri Jamu dan Farmasi Sidomuncul Tbk, PT
64	SILO	Siloam International Hospitals Tbk, PT
65	SMBR	Semen Baturaja Tbk, PT
66	SSMS	Sawit Sumbermas Sarana Tbk, PT
67	TARA	Sitara Propertindo Tbk, PT
68	TGRA	Terregra Asia Energi Tbk, PT
69	TOPS	Totalindo Eka Persada Tbk, PT
70	VICO	Victoria Investama Tbk, PT
71	WSBP	Waskita Beton Precast Tbk
72	WTON	Wijaya Karya Beton Tbk, PT
73	ZINC	Kapuas Prima Coal Tbk

Lampiran 8

Data angka 1

No.	Kode Saham	Open Price	Closing Price	Tahun Berdiri	Tahun Listing
1	ACST	2500	2694.23	1995	2013
2	AGII	1000	1160	1905	2016
3	AGRS	110	187	1973	2014
4	APII	220	330	2000	2013
5	ARTO	132	173	1992	2016
6	ATIC	700	725	2001	2015
7	BBHI	125	129	1992	2015
8	BBMD	1380	1560	1995	2013
9	BBYB	115	182.81	1989	2015
10	BELL	150	210	1971	2017
11	BIKA	1000	1500	2007	2015
12	BIRD	6500	7450	2001	2014
13	BMAS	320	325	1989	2013
14	BOGA	103	175	2011	2016
15	BOLT	550	825	1982	2015
16	BPII	500	550	1998	2014

17	CAMP	330	955	1972	2017
18	CINT	330	363	1978	2014
19	CLEO	115	262	1998	2017
20	CSIS	300	560	1995	2017
21	DAYA	180	187.66	2005	2016
22	DMAS	210	219	1993	2015
23	DNAR	110	187	1990	2014
24	DPUM	550	825	2012	2015
25	DWGL	150	492	1986	2017
26	DYAN	350	385	2007	2013
27	FINN	105	178	1981	2017
28	FIRE	500	750	2015	2017
29	FORZ	220	330	2012	2017
30	HOKI	310	346	2003	2017
31	HOTL	185	200	2006	2013
32	IBFN	288	290	1991	2014
33	IDPR	1280	1475	1977	2015
34	IMJS	500	540	2004	2013
35	IMPC	380	570	1981	2014
36	IPCM	380	402	2013	2017
37	JGLE	140	173	1988	2016
38	JMAS	140	238	2014	2017
39	KINO	3800	3850	1999	2015
40	KMTR	458	685	1991	2017
41	KRAH	275	410	1990	2013
42	LINK	1600	2400	1996	2014
43	MAPB	1680	1895	2013	2017
44	MARI	750	770	2006	2016
45	MARK	250	374	2002	2017
46	MDIA	138	151	2008	2014
47	MGNA	105	155	1984	2014
48	MIKA	1700	2120	1995	2015
49	MINA	105	178	1993	2017
50	MLPT	480	720	2001	2013
51	MMLP	585	873.16	2010	2015
52	MPOW	200	296	2007	2017
53	MTRA	185	214	1980	2016
54	MTWI	100	442	1952	2017
55	NASA	103	175	2014	2017

56	NOBU	375	430	1990	2013
57	NRCA	850	1270	1975	2013
58	OASA	190	322	2006	2016
59	PBSA	1200	1260	2002	2016
60	POWR	1500	1540	1990	2016
61	PRDA	6500	6600	1988	2016
62	SHIP	140	238	1989	2016
63	SIDO	580	700	1975	2013
64	SILO	9000	9438.68	1996	2013
65	SMBR	560	570	1974	2013
66	SSMS	670	720	1995	2013
67	TARA	106	180	2006	2014
68	TGRA	200	545	1995	2017
69	TOPS	310	464	1996	2017
70	VICO	125	210	1989	2013
71	WSBP	490	540	2014	2016
72	WTON	590	760	1997	2014
73	ZINC	140	296	2005	2017

Data angka 2

No.	Kode Saham	Net Income	Total Asset	Total Liabilitas	Total Ekuitas
1	ACST	52670156329	7.54771E+11	5.3656E+11	2.18211E+11
2	AGII	5.97702E+11	4.95345E+12	3.07458E+12	1.71477E+12
3	AGRS	12629000000	2.50928E+12	2.13729E+12	3.71988E+11
4	APII	19622396797	1.7858E+11	1.10082E+11	68498037200
5	ARTO	2383690317	7.45647E+11	6.38433E+11	1.07214E+11
6	ATIC	81481385410	1.9737E+12	1.56472E+12	4.0898E+11
7	BBHI	33929936090	2.02053E+12	1.7292E+12	2.91324E+11
8	BBMD	3.34624E+11	7.3688E+12	5.50968E+12	1.85913E+12
9	BBYB	12655881055	2.69195E+12	2.41955E+12	2.72399E+11

10	BELL	3787737459	3.87981E+11	1.96328E+11	1.91653E+11
11	BIKA	1.70315E+11	1.7334E+12	1.35663E+12	3.7677E+11
12	BIRD	7.13202E+11	5.01191E+12	3.80666E+12	1.20526E+12
13	BMAS	23654038000	3.40328E+12	3.03339E+12	3.69898E+11
14	BOGA	74764000000	2.51192E+13	2.23535E+13	2.76577E+12
15	BOLT	3.02625E+11	9.11611E+11	3.86754E+11	5.24857E+11
16	BPII	32689352390	2.7902E+11	54758788350	2.24261E+11
17	CAMP	49802299009	1.03104E+12	4.78205E+11	5.52836E+11
18	CINT	1.24205E+11	2.62915E+11	77798659892	1.85117E+11
19	CLEO	39015746963	4.63289E+11	2.65127E+11	1.98161E+11
20	CSIS	6136028979	2.52131E+11	1.31033E+11	1.21098E+11
21	DAYA	35031464000	1.26998E+11	81850163000	45148033000
22	DMAS	9.64567E+11	7.60283E+12	1.20745E+12	6.39538E+12
23	DNAR	7578510761	8.54801E+11	5.81212E+11	2.73588E+11
24	DPUM	36042533740	3.10943E+11	2.54027E+11	56915816164
25	DWGL	1.45896E+11	1.78726E+12	1.39421E+12	3.93055E+11
26	DYAN	64951900135	1.41845E+12	8.65025E+11	5.53428E+11
27	FINN	7717350532	8.66961E+11	7.29843E+11	1.37119E+11
28	FIRE	5510871649	3.33255E+11	2.53849E+11	79406423854
29	FORZ	7819896453	4.276E+11	3.22739E+11	1.04861E+11
30	HOKI	43399842450	3.70245E+11	1.50171E+11	2.20074E+11
31	HOTL	17125821349	8.43617E+11	5.69577E+11	2.7404E+11
32	IBFN	31252896720	2.35528E+12	1.96153E+12	3.93748E+11
33	IDPR	1.80445E+11	9.22263E+11	4.53122E+11	4.69141E+11
34	IMJS	66015699	5.67691E+12	4.46437E+12	1.21254E+12
35	IMPC	1.85782E+11	1.64481E+12	8.88742E+11	7.56072E+11
36	IPCM	1.17064E+11	5.9837E+11	2.61636E+11	3.36734E+11
37	JGLE	2.45715E+11	4.31771E+12	2.38558E+12	1.93213E+12
38	JMAS	58122759	70822435698	8048586711	61951539697
39	KINO	2.04551E+11	1.86338E+12	1.201E+12	6.62385E+11
40	KMTR	2.04642E+11	3.80682E+12	2.75451E+12	1.05231E+12
41	KRAH	14665962550	2.28799E+11	92647366745	36151159815
42	LINK	5.57887E+11	3.2262E+12	7.06136E+11	2.51901E+12
43	MAPB	1.19771E+11	1.23383E+12	1.08618E+12	1.47652E+11
44	MARI	32141755569	1.56265E+11	67999817146	88265241725
45	MARK	21156413510	1.70938E+11	90318106019	80619536441
46	MDIA	118963773	984900277	300451852	684448425
47	MGNA	3813534071	3.38764E+11	2.7479E+11	63973645717
48	MIKA	5.41443E+11	2.15667E+12	3.50493E+11	1.80617E+12

49	MINA	2669065147	1.17113E+11	3487103929	1.13626E+11
50	MLPT	28509146000	1.00425E+12	8.09935E+11	1.94311E+11
51	MMLP	2.86E+11	2.139E+12	6.91E+11	1.148E+12
52	MPOW	7382907000	3.50204E+11	2.68745E+11	81458635000
53	MTRA	9849612036	2.59288E+11	1.35477E+11	1.23811E+11
54	MTWI	5475553589	2.76988E+11	1.64012E+11	1.12976E+11
55	NASA	166250000	8.90712E+11	91803206151	7.98909E+11
56	NOBU	3706000000	1.21752E+12	9.61435E+11	2.56086E+11
57	NRCA	91862980549	8.35886E+11	5.67729E+11	2.68156E+11
58	OASA	2756577041	14439716356	1152426070	13287290286
59	PBSA	1.75653E+11	7.56764E+11	3.789E+11	3.77863E+11
60	POWR	1.09919E+12	1.39433E+13	9.26931E+12	4.67399E+12
61	PRDA	66503624672	5.77866E+11	4.51539E+11	1.26327E+11
62	SHIP	61116019592	5.81821E+11	1.56605E+11	4.25217E+11
63	SIDO	3.87538E+11	2.151E+12	8.46384E+11	1.30465E+12
64	SILO	51959602529	1.58623E+12	1.34159E+12	2.44641E+11
65	SMBR	2.98513E+11	1.19859E+12	2.44448E+11	9.54138E+11
66	SSMS	3.44844E+11	2.11361E+12	1.64757E+12	4.66041E+11
67	TARA	4125390824	9.69041E+11	3.42042E+11	6.26999E+11
68	TGRA	231388999	2.76987E+11	21412285867	2.57575E+11
69	TOPS	2.01223E+11	2.78477E+12	2.14985E+12	6.34911E+11
70	VICO	1.10254E+11	7.72642E+11	83269793796	6.89373E+11
71	WSBP	4.2902E+11	4.33241E+12	3.00158E+12	1.33083E+12
72	WTON	241206242	2917400751	2187382982	730017770
73	ZINC	34914108521	5.56844E+11	4.09879E+11	1.46966E+11

Underwriter

No.	Kode Saham	Underwriter
1	ACST	PT Kim Eng Securities
2	AGII	PT DBS Vickers Securities Indonesia, PT Mandiri Sekuritas & PT RHB Securities Indonesia
3	AGRS	PT Indo Premier Securities
4	APII	PT Lautandhana Securindo
5	ARTO	PT Binaartha Parama & PT Erdikha Elit Sekuritas
6	ATIC	PT Bahana Securities
7	BBHI	PT Lautandhana Securindo
8	BBMD	PT Ciptadana Securities
9	BBYB	PT Semesta Indovest

10	BELL	PT Lotus Andalan Sekuritas
11	BIKA	PT RHB OSK Securities Indonesia
12	BIRD	PT Credit Suisse Securities Indonesia, PT Danareksa Sekuritas, PT UBS Securities Indonesia
13	BMAS	PT Makinta Securities
14	BOGA	PT Jasa Utama Capital
15	BOLT	PT RHB OSK Securities Indonesia
16	BPII	PT Panin Sekuritas Tbk
17	CAMP	PT Shinhan Sekuritas Indonesia
18	CINT	PT Danareksa Sekuritas, PT Sinarmas Sekuritas
19	CLEO	PT Lautandhana Securindo
20	CSIS	PT Ciptadana Sekuritas Asia :
21	DAYA	PT Trimegah Securities Tbk.
22	DMAS	PT Macquarie Capital Securities Indonesia, PT CLSA Indonesia, PT Sinarmas Sekuritas
23	DNAR	PT Andalan Artha Advisindo Sekuritas
24	DPUM	PT DBS Vickers Securities Indonesia, PT Sucorinvest Central Gani, PT BNI Securities
25	DWGL	PT Sinarmas Sekuritas
26	DYAN	PT Mandiri Sekuritas, PT OSK Nusadana Securities Indonesia
27	FINN	PT UOB Kay Hian Sekuritas
28	FIRE	PT Ciptadana Sekuritas Asia & PT Lautandhana Securindo
29	FORZ	PT Sinarmas Sekuritas
30	HOKI	PT Bahana Sekuritas, PT RHB Sekuritas Indonesia & PT Trimegah Sekuritas Indonesia Tbk.
31	HOTL	PT Valbury Asia Securities
32	IBFN	PT BNI Securities
33	IDPR	PT Yuanta Securities Indonesia, PT Minna Padi Investama Tbk
34	IMJS	PT Kresna Graha Sekurindo, PT Buana Capital
35	IMPC	PT Ciptadana Securities
36	IPCM	PT Danareksa Sekuritas & PT Mandiri Sekuritas
37	JGLE	PT Danatama Makmur
38	JMAS	PT Jasa Utama Capital Sekuritas
39	KINO	PT Deutsche Securities Indonesia, PT Credit Suisse Securities Indonesia, PT Indo Premier Securities
40	KMTR	PT Trimegah Sekuritas Indonesia Tbk.
41	KRAH	PT Andalan Artha Advisindo Sekuritas, PT Andalan Artha Advisindo Sekuritas
42	LINK	PT Ciptadana Securities
43	MAPB	PT Indo Premier Sekuritas
44	MARI	PT Trimegah Securities Tbk.
45	MARK	PT Panin Sekuritas Tbk
46	MDIA	PT Ciptadana Securities, PT Sinarmas Sekuritas, PT Kresna Graha Sekurindo Tbk
47	MGNA	PT Jasa Utama Capital

48	MIKA	PT Kresna Graha Sekurindo Tbk
49	MINA	PT Jasa Utama Capital Sekuritas
50	MLPT	PT Ciptadana Securities (affiliated)
51	MMLP	PT Indo Premier Securities
52	MPOW	PT KGI Sekuritas Indonesia :
53	MTRA	PT Lautandhana Securindo
54	MTWI	PT Panin Sekuritas Tbk. :
55	NASA	PT Jasa Utama Capital Sekuritas
56	NOBU	PT Ciptadana Securities
57	NRCA	PT Ciptadana Securities
58	OASA	PT Erdhika Elit Sekuritas
59	PBSA	PT Sinarmas Sekuritas
60	POWR	PT Indo Premier Securities
61	PRDA	PT Citigroup Securities Indonesia
62	SHIP	PT Lautandhana Securindo & PT UOB Kay Hian Securities
63	SIDO	PT Kresna Graha Sekurindo Tbk., PT Mandiri Sekuritas
64	SILO	PT Ciptadana Securities
65	SMBR	PT Bahana Securities, PT Danareksa Sekuritas, PT Mandiri Sekuritas
66	SSMS	PT BNP Paribas Securities Indonesia, PT Mandiri Sekuritas, PT RHB OSK Securities Indonesia
67	TARA	PT Sinarmas Sekuritas
68	TGRA	PT Lautandhana Securindo & PT Mega Capital Sekuritas
69	TOPS	PT Bahana Sekuritas, PT CLSA Sekuritas Indonesia & PT Indo Premier Sekuritas (affiliated)
70	VICO	PT Andalan Artha Advisindo Sekuritas
71	WSBP	PT Bahana Securities
72	WTON	PT Bahana Securities, PT Danareksa Sekuritas, PT Mandiri Sekuritas, PT Sucorinvest Central Gani
73	ZINC	PT Erdikha Elit Sekuritas :

Data angka 3

LEVERAGE	ROE	SIZE	AGE	SKOR UNDERWRITER	INITIAL RETRUN
0.7109	0.2414	27.3497	1.2553	1.0000	0.0777
0.6207	0.3486	29.2311	4.7095	1.0000	0.1600
0.8518	0.0340	28.5510	1.6128	1.0000	0.7000
0.6164	0.2865	25.9083	1.1139	0.0000	0.5000
0.8562	0.0222	27.3375	3.1781	0.0000	0.3106
0.7928	0.1992	28.3109	1.1461	0.0000	0.0357
0.8558	0.1165	28.3344	1.3617	0.0000	0.0320
0.7477	0.1800	29.6283	1.2553	0.0000	0.1304

0.8988	0.0465	28.6213	1.4150	0.0000	0.5897
0.5060	0.0198	26.6842	3.8286	1.0000	0.4000
0.7826	0.4520	28.1811	0.9031	1.0000	0.5000
0.7595	0.5917	29.2428	1.1139	1.0000	0.1462
0.8913	0.0639	28.8558	1.3802	0.0000	0.0156
0.8899	0.0270	30.8547	1.6094	0.0000	0.6990
0.4243	0.5766	27.5385	1.5185	1.0000	0.5000
0.1963	0.1458	26.3545	1.2041	0.0000	0.1000
0.4638	0.0901	27.6616	3.8067	0.0000	1.8939
0.2959	0.6710	26.2951	1.5563	1.0000	0.1000
0.5723	0.1969	26.8616	2.9444	0.0000	1.2783
0.5197	0.0507	26.2532	3.0910	1.0000	0.8667
0.6445	0.7759	25.5674	2.3979	1.0000	0.0426
0.1588	0.1508	29.6595	1.3424	1.0000	0.0429
0.6799	0.0277	27.4741	1.3802	0.0000	0.7000
0.8170	0.6333	26.4629	0.4771	0.0000	0.5000
0.7801	0.3712	28.2117	3.4340	1.0000	2.2800
0.6098	0.1174	27.9806	0.7782	1.0000	0.1000
0.8418	0.0563	27.4883	3.5835	0.0000	0.6952
0.7617	0.0694	26.5322	0.6931	1.0000	0.5000
0.7548	0.0746	26.7815	1.6094	1.0000	0.5000
0.4056	0.1972	26.6374	2.6391	1.0000	0.1161
0.6752	0.0625	27.4610	0.8451	1.0000	0.0811
0.8328	0.0794	28.4877	1.3617	0.0000	0.0069
0.4913	0.3846	27.5501	1.5798	0.0000	0.1523
0.7864	0.0001	29.3674	0.9542	0.0000	0.0800
0.5403	0.2457	28.1286	1.5185	1.0000	0.5000
0.4372	0.3476	27.1175	1.3863	1.0000	0.0579
0.5525	0.1272	29.0937	3.3322	0.0000	0.2357
0.1136	0.0009	24.9834	1.0986	0.0000	0.7000
0.6445	0.3088	28.2534	2.7726	1.0000	0.0132
0.7236	0.1945	28.9678	3.2581	1.0000	0.4956
0.4049	0.4057	26.1561	1.3617	0.0000	0.4909
0.2189	0.2215	28.8023	1.2553	1.0000	0.5000
0.8803	0.8112	27.8411	1.3863	1.0000	0.1280
0.4352	0.3641	25.7748	2.3026	1.0000	0.0267
0.5284	0.2624	25.8646	2.7081	0.0000	0.4960
0.3051	0.1738	20.7081	0.7782	1.0000	0.0942
0.8112	0.0596	26.5486	1.4771	0.0000	0.4762
0.1625	0.2998	28.3996	2.9957	0.0000	0.2471
0.0298	0.0235	25.4864	3.1781	0.0000	0.6952

0.8065	0.1467	27.6353	1.0792	0.0000	0.5000
0.3230	0.2491	28.3914	1.6094	0.0000	0.4926
0.7674	0.0906	26.5818	2.3026	0.0000	0.4800
0.5225	0.0796	26.2812	3.5835	0.0000	0.1568
0.5921	0.0485	26.3472	4.1744	0.0000	3.4200
0.1031	0.0002	27.5153	1.0986	0.0000	0.6990
0.7897	0.0145	27.8278	1.3617	0.0000	0.1467
0.6792	0.3426	27.4518	1.5798	0.0000	0.4941
0.0798	0.2075	23.3932	2.3026	0.0000	0.6947
0.5007	0.4649	27.3523	2.6391	1.0000	0.0500
0.6648	0.2352	30.2660	3.2581	0.0000	0.0267
0.7814	0.5264	27.0826	3.3322	0.0000	0.0154
0.2692	0.1437	27.0894	3.2958	0.0000	0.7000
0.3935	0.2970	28.3970	1.5798	1.0000	0.2069
0.8458	0.2124	28.0924	1.2304	0.0000	0.0487
0.2039	0.3129	27.8122	1.5911	1.0000	0.0179
0.7795	0.7399	28.3794	1.2553	1.0000	0.0746
0.3530	0.0066	27.5996	0.9031	0.0000	0.6981
0.0773	0.0009	26.3472	3.0910	0.0000	1.7250
0.7720	0.3169	28.6552	3.0445	1.0000	0.4968
0.1078	0.1599	27.3731	1.3802	0.0000	0.6800
0.6928	0.3224	29.0971	0.6931	0.0000	0.1020
0.7498	0.3304	21.7940	1.2304	1.0000	0.2881
0.7361	0.2376	27.0456	2.4849	0.0000	1.1143

Data angka 3 setelah theilnager

LEVERAGE	ROE	SIZE	AGE	UDW	RETRUN
0.139110	0.081059	0.862847	0.184853	0.164990	0.045988
0.129986	0.097409	0.892032	0.358052	0.164990	0.065996
0.152270	0.030400	0.881594	0.209530	0.164990	0.138041
0.129539	0.088307	0.839802	0.174136	0.000000	0.116666
0.152668	0.024601	0.862655	0.294129	0.000000	0.091952
0.146905	0.073644	0.877879	0.176634	0.000000	0.031180
0.152633	0.056307	0.878243	0.192532	0.000000	0.029514

0.142667	0.069997	0.898071	0.184853	0.000000	0.059587
0.156420	0.035563	0.882678	0.196260	0.000000	0.126694
0.117366	0.023195	0.852285	0.322835	0.164990	0.104349
0.145962	0.110929	0.875864	0.156792	0.164990	0.116666
0.143790	0.126918	0.892211	0.174136	0.164990	0.063076
0.155766	0.041722	0.886286	0.193834	0.000000	0.020624
0.155642	0.027127	0.916469	0.209312	0.000000	0.137945
0.107466	0.125282	0.865820	0.203314	0.164990	0.116666
0.073092	0.062992	0.847004	0.181047	0.000000	0.052174
0.112364	0.049520	0.867753	0.321907	0.000000	0.227060
0.089750	0.135146	0.846048	0.205828	0.164990	0.052174
0.124813	0.073210	0.855113	0.283112	0.000000	0.186538
0.118942	0.037139	0.845374	0.290075	0.164990	0.153597
0.132455	0.145334	0.834260	0.255489	0.164990	0.034036
0.065751	0.064075	0.898545	0.191162	0.164990	0.034156
0.136048	0.027460	0.864808	0.193834	0.000000	0.138041
0.149127	0.131295	0.848743	0.113965	0.000000	0.116666
0.145723	0.100520	0.876339	0.305743	0.164990	0.249129
0.128844	0.056523	0.872742	0.145542	0.164990	0.052174
0.151381	0.039142	0.865030	0.312329	0.000000	0.137570
0.143998	0.043465	0.849853	0.137363	0.164990	0.116666
0.143339	0.045056	0.853836	0.209312	0.164990	0.116666
0.105077	0.073268	0.851538	0.268029	0.164990	0.056225
0.135569	0.041245	0.864601	0.151674	0.164990	0.046980
0.150568	0.046483	0.880615	0.192532	0.000000	0.013749
0.115648	0.102324	0.866003	0.207375	0.000000	0.064398
0.146313	0.001217	0.894109	0.161171	0.000000	0.046666
0.121279	0.081786	0.875048	0.203314	0.164990	0.116666
0.109099	0.097280	0.859176	0.194261	0.164990	0.039699
0.122639	0.058838	0.889933	0.301178	0.000000	0.080103
0.055620	0.005054	0.824677	0.172934	0.000000	0.138041
0.132458	0.091686	0.876987	0.274726	0.164990	0.018926
0.140345	0.072758	0.888005	0.297810	0.164990	0.116155
0.104990	0.105088	0.843809	0.192532	0.000000	0.115600
0.077189	0.077645	0.885465	0.184853	0.164990	0.116666
0.154803	0.148598	0.870565	0.194261	0.164990	0.059023
0.108838	0.099563	0.837636	0.250360	0.164990	0.026943
0.119930	0.084520	0.839093	0.271510	0.000000	0.116198
0.091127	0.068785	0.750805	0.145542	0.164990	0.050640
0.148597	0.040283	0.850116	0.200524	0.000000	0.113854
0.066513	0.090335	0.879253	0.285568	0.000000	0.082008

0.028470	0.025287	0.832937	0.294129	0.000000	0.137570
0.148171	0.063198	0.867340	0.171398	0.000000	0.116666
0.093776	0.082351	0.879125	0.209312	0.000000	0.115797
0.144533	0.049671	0.850648	0.250360	0.000000	0.114308
0.119261	0.046536	0.845825	0.312329	0.000000	0.065324
0.126959	0.036323	0.846886	0.337096	0.000000	0.305120
0.052969	0.002380	0.865455	0.172934	0.000000	0.137945
0.146615	0.019848	0.870357	0.192532	0.000000	0.063186
0.135974	0.096568	0.864456	0.207375	0.000000	0.115977
0.046611	0.075149	0.798000	0.250360	0.000000	0.137521
0.116745	0.112491	0.862888	0.268029	0.164990	0.036893
0.134524	0.080011	0.907685	0.297810	0.000000	0.026943
0.145845	0.119710	0.858624	0.301178	0.000000	0.020464
0.085598	0.062550	0.858732	0.299530	0.000000	0.138041
0.103495	0.089922	0.879212	0.207375	0.164990	0.075047
0.151734	0.076037	0.874484	0.183016	0.000000	0.036426
0.074510	0.092285	0.870112	0.208114	0.164990	0.022048
0.145669	0.141924	0.878940	0.184853	0.164990	0.045072
0.098023	0.013383	0.866780	0.156792	0.000000	0.137854
0.045873	0.004945	0.846886	0.290075	0.000000	0.216697
0.144967	0.092884	0.883200	0.287884	0.164990	0.116289
0.054164	0.065982	0.863216	0.193834	0.000000	0.136054
0.137331	0.093678	0.889985	0.137363	0.000000	0.052704
0.142864	0.094839	0.770239	0.183016	0.164990	0.088564
0.141553	0.080417	0.858036	0.260083	0.000000	0.174163