

LAMPIRAN

Lampiran 1 : Daftar Nama Perusahaan Manufaktur Yang Menjadi Sampel Penelitian.

No	Nama Perusahaan	Kode
1	Alkindo Naratama Tbk	ALDO
2	Charoen Pokphand Indonesia Tbk	CPIN
3	Darya-Varia Laboratoria Tbk	DVLA
4	Ekadharma Internasional Tbk	EKAD
5	Indofood CBP Sukses Makmur Tbk	ICBP
6	Intanwijaya Internasional Tbk	INCI
7	Indofood Sukses Makmur Tbk	INDF
8	JAPFA Comfeed Indonesia Tbk	JPFA
9	Kimia Farma (persero) Tbk	KAEF
10	Kedawung Setia Industrial Tbk	KDSI
11	Kalbe Farma Tbk	KLBF
12	Merck Tbk	MERK
13	Mayora Indah Tbk	MYOR
14	Sekar Laut Tbk	SKLT
15	Selamat Sempurna Tbk	SMSM
16	Mandom Indonesia Tbk	TCID

Lampiran 2 : Data Perusahaan Dari Setiap Variabel

NO	Nama Perusahaan	Periode	NP	GROWTH	PROFITABILITAS	SIZE
1	ALDO	2013	2.595020293	0.254492309	0.161485336	26.43196697
2		2014	2.535712371	0.236727749	0.132108166	26.60048122
3		2015	2.365016683	0.090064566	0.14087205	26.62592873
4		2016	1.642707198	0.237889531	0.125589969	26.74022896
5		2017	1.438392203	0.063481885	0.126558443	26.93527387
6	CPIN	2013	5.561632616	0.204214364	0.254116713	30.38609465
7		2014	5.664150878	0.135887624	0.159608688	30.66897148
8		2015	3.394104826	0.032845385	0.145890909	30.83721344
9		2016	3.579073976	0.278611432	0.157191764	30.81758009
10		2017	3.13281209	0.290419284	0.159002409	30.83061597
11	DVLA	2013	2.693770688	0.013154833	0.137527131	27.80502004
12		2014	1.966685456	0.001940307	0.084088558	27.84310172
13		2015	1.495607679	0.183250925	0.11082949	27.95040404
14		2016	1.820708707	0.111215643	0.140872797	28.05718097
15		2017	1.96649634	0.085637548	0.145345591	28.12625755
16	EKAD	2013	1.146460165	0.087346679	0.16596297	26.5627484
17		2014	1.317240617	0.257733255	0.149180794	26.74362436
18		2015	0.957352527	0.009426956	0.161118058	26.68862148
19		2016	0.696408618	0.069799814	0.153184265	27.27792352
20		2017	0.732703134	0.131811242	0.114957194	27.40382894
21	ICBP	2013	4.483411491	0.155536286	0.168482234	30.68819979
22		2014	5.078840863	0.196367589	0.168330447	30.84629892
23		2015	4.794808805	0.057244837	0.178383101	30.91045093
24		2016	5.405211492	0.085850066	0.196277809	30.99493011
25		2017	5.106735681	0.033091212	0.174331602	31.08479558
26	INCI	2013	0.344578891	0.257099259	0.081938853	25.63696476
27		2014	0.314224704	0.354225874	0.080427571	25.72042823
28		2015	0.358425027	0.242179345	0.110097474	25.8563905
29		2016	0.228133621	0.288282814	0.041135699	26.31928261
30		2017	0.253630723	0.531836614	0.061682252	26.43959721
31	INDF	2013	1.510192586	0.150004339	0.089037175	31.98891884
32		2014	1.437550654	0.101546009	0.124824781	32.08626628
33		2015	1.053734428	0.007351192	0.086024211	32.15097678
34		2016	1.583582762	0.041965162	0.119861981	32.03986633
35		2017	1.4318957	0.05147992	0.110038997	32.10767006

NO	Nama Perusahaan	Periode	NP	GROWTH	PROFITABILITAS	SIZE
36	JPFA	2013	2.479559102	0.200720171	0.122137252	30.33356217
37		2014	1.914462807	0.142293242	0.072749799	30.38661849
38		2015	1.107982538	0.023060459	0.085844589	30.47357109
39		2016	1.771297834	0.081541146	0.231688503	30.58858547
40		2017	1.514316365	0.093831021	0.11309229	30.67976653
41	KAEF	2013	2.017330342	0.164379554	0.132755692	28.5360242
42		2014	4.492525291	0.039776322	0.13059761	28.71897164
43		2015	2.349545282	0.075059782	0.129123297	28.86500291
44		2016	6.724245038	0.195691045	0.119572538	29.15980468
45		2017	5.829224106	0.054370914	0.128942757	29.43867837
46	KDSI	2013	0.396936001	0.065303794	0.10227802	27.46877726
47		2014	0.371805129	0.173061786	0.112205197	27.58201724
48		2015	0.204145299	0.053936643	0.030271625	27.79406952
49		2016	0.337673431	0.164177239	0.112265634	27.76404127
50		2017	0.458768029	0.125383478	0.142038307	27.91491482
51	KLBF	2013	6.8934344	0.173486036	0.231819082	30.05715581
52		2014	8.737630351	0.08538872	0.216052543	30.15073429
53		2015	5.784662189	0.029877693	0.192372288	30.24815541
54		2016	5.697743978	0.083117803	0.188616316	30.35402621
55		2017	5.701653602	0.041699163	0.17656872	30.44140161
56	MERK	2013	8.265220783	0.283989741	0.342519287	27.26997423
57		2014	6.472926112	0.071314701	0.327750101	27.29778298
58		2015	6.409551387	0.139293196	0.301018867	27.18730386
59		2016	7.07361377	0.052224926	0.264029717	27.33521936
60		2017	6.187468858	0.117742997	0.235080423	27.46497427
61	MYOR	2013	5.903645532	0.143398834	0.268718764	29.90416074
62		2014	4.584671723	0.179004851	0.100469719	29.96297053
63		2015	5.251289652	0.04584927	0.240685874	30.05959686
64		2016	5.870480172	0.23829499	0.221647149	30.18998505
65		2017	6.141208368	0.134426127	0.22176734	30.33344551
66	SKLT	2013	0.890318476	0.411536884	0.081918978	26.43365805
67		2014	1.351142389	0.201695211	0.107458554	26.52711954
68		2015	1.680913827	0.093464019	0.131979583	26.65580474
69		2016	0.718376306	0.119100417	0.069714775	27.0658096
70		2017	2.470381077	0.096346286	0.074684567	27.17891117
71	SMSM	2013	4.933315901	0.04569401	0.335938741	28.16229812
72		2014	5.962858789	0.105366371	0.366604844	28.19029113
73		2015	4.75808595	0.064592876	0.320296921	28.42857696

NO	Nama Perusahaan	Periode	NP	GROWTH	PROFITABILITAS	SIZE
74		2016	3.571712334	0.027454187	0.317831974	28.44405578
75		2017	3.953178497	0.159759656	0.303792178	28.52438748
76	TCID	2013	2.022580023	0.095479192	0.135375931	28.01352629
77		2014	2.745369025	0.138223893	0.13581129	28.24795406
78		2015	1.934605624	0.002896756	0.317501507	28.3643966
79		2016	1.409483973	0.091531919	0.09088345	28.41268319
80		2017	1.936739134	0.071086108	0.096391241	28.4904482

Lampiran 3: Statistik Deskriptif

	PROFITABI			
	NP	GROWTH	LITAS	SIZE
Mean	3.092139	0.131574	0.161215	28.71632
Median	2.357281	0.103456	0.139200	28.38854
Maximum	8.737630	0.531837	0.366605	32.15098
Minimum	0.204145	0.001940	0.030272	25.63696
Std. Dev.	2.260557	0.098289	0.077549	1.788977
Skewness	0.544151	1.353103	0.940414	0.225750
Kurtosis	2.094102	5.537697	3.135579	1.871754
Jarque-Bera	6.683504	45.87818	11.85299	4.922638
Probability	0.035375	0.000000	0.002668	0.085322
Sum	247.3711	10.52594	12.89723	2297.305
Sum Sq. Dev.	403.6995	0.763198	0.475092	252.8347
Observations	80	80	80	80

Lampiran 4 : Hasil Uji Asumsi Klasik

Uji Heteroskedastisitas

Heteroskedasticity Test: White

F-statistic	1.480188	Prob. F(9,70)	0.1724
Obs*R-squared	12.79061	Prob. Chi-Square(9)	0.1723
Scaled explained SS	14.92786	Prob. Chi-Square(9)	0.0929

Test Equation:

Dependent Variable: RESID^2

Method: Least Squares

Date: 10/21/18 Time: 14:28

Sample: 1 84

Included observations: 80

Variable	Coefficient	Std. Error	t-Statistic	Prob.
C	-233.2631	160.0415	-1.457516	0.1494
GROWTH	85.32823	92.17491	0.925721	0.3578
GROWTH^2	-12.42495	32.81464	-0.378641	0.7061
GROWTH*PROFITABILITAS	-103.9333	63.99717	-1.624029	0.1089
GROWTH*SIZE	-2.430907	3.034477	-0.801096	0.4258
PROFITABILITAS	150.8843	142.3526	1.059934	0.2928
PROFITABILITAS^2	-44.86437	66.52135	-0.674436	0.5023
PROFITABILITAS*SIZE	-3.996250	4.586358	-0.871334	0.3866
SIZE	14.80343	10.62931	1.392700	0.1681
SIZE^2	-0.234116	0.176716	-1.324818	0.1895
R-squared	0.159883	Mean dependent var		2.181136
Adjusted R-squared	0.051868	S.D. dependent var		3.529870
S.E. of regression	3.437108	Akaike info criterion		5.423607
Sum squared resid	826.9599	Schwarz criterion		5.721360
Log likelihood	-206.9443	Hannan-Quinn criter.		5.542984
F-statistic	1.480188	Durbin-Watson stat		1.822429
Prob(F-statistic)	0.172424			

Lampiran 5 : Uji Autokorelasi

Dependent Variable: NP

Method: Least Squares

Date: 10/21/18 Time: 14:25

Sample (adjusted): 1 84

Included observations: 80 after adjustments

Variable	Coefficient	Std. Error	t-Statistic	Prob.
C	-11.94008	3.001019	-3.978674	0.0002
GROWTH	2.207796	1.864640	1.184033	0.2401
PROFITABILITAS	19.89179	2.245955	8.856717	0.0000
SIZE	0.401683	0.100693	3.989185	0.0002
R-squared	0.567770	Mean dependent var		3.092139
Adjusted R-squared	0.550709	S.D. dependent var		2.260557
S.E. of regression	1.515234	Akaike info criterion		3.717723
Sum squared resid	174.4909	Schwarz criterion		3.836824
Log likelihood	-144.7089	Hannan-Quinn criter.		3.765474
F-statistic	33.27748	Durbin-Watson stat		2.088010
Prob(F-statistic)	0.000000			

Lampiran 6 : Uji Multikolinieritas

Variance Inflation Factors

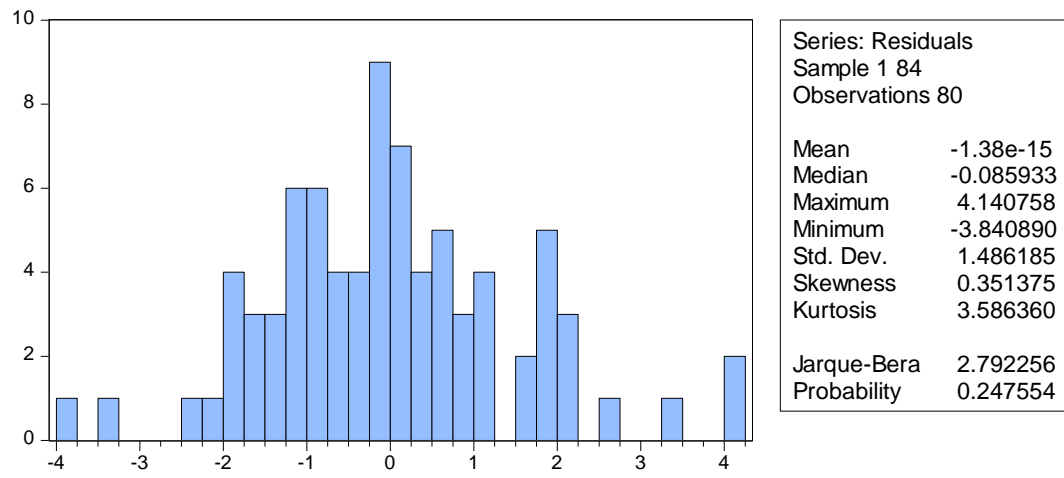
Date: 10/21/18 Time: 14:37

Sample: 1 85

Included observations: 80

Variable	Coefficient Variance	Uncentered VIF	Centered VIF
C	9.006114	313.8111	NA
GROWTH	3.476882	3.253069	1.155761
PROFITABILITAS	5.044314	5.612015	1.043808
SIZE	0.010139	292.4481	1.116546

Lampiran 7 : Uji Normalitas



Lampiran 8 : Uji Hipotesis

Uji F, Uji t, dan Koefisien Determinasi

Dependent Variable: NP

Method: Least Squares

Date: 10/21/18 Time: 14:25

Sample (adjusted): 1 84

Included observations: 80 after adjustments

Variable	Coefficient	Std. Error	t-Statistic	Prob.
C	-11.94008	3.001019	-3.978674	0.0002
GROWTH	2.207796	1.864640	1.184033	0.2401
PROFITABILITAS	19.89179	2.245955	8.856717	0.0000
SIZE	0.401683	0.100693	3.989185	0.0002
R-squared	0.567770	Mean dependent var	3.092139	
Adjusted R-squared	0.550709	S.D. dependent var	2.260557	
S.E. of regression	1.515234	Akaike info criterion	3.717723	
Sum squared resid	174.4909	Schwarz criterion	3.836824	
Log likelihood	-144.7089	Hannan-Quinn criter.	3.765474	
F-statistic	33.27748	Durbin-Watson stat	2.088010	
Prob(F-statistic)	0.000000			