

LAMPIRAN 1

DATA PERUSAHAAN

NO	KODE	NAMA PERUSAHAAN
1	AISA	Tiga Pilar Sejahtera Food Tbk
2	AKPI	Argha Karya Prima Industry Tbk
3	ALDO	Alkindo Naratama Tbk
4	AMFG	Asahimas Flat Glass Tbk
5	APLI	Asiaplast Industries Tbk
6	ARNA	Arwana Citra Mulia Tbk
7	ASII	Astra International Tbk
8	AUTO	Astra Auto Part Tbk
9	BUDI	Budi Acid Jaya Tbk
10	CPIN	Charoen Pokphand Indonesia Tbk
11	DLTA	Delta Djakarta Tbk
12	DPNS	Duta Pertiwi Nusantara
13	DVLA	Darya Varia Laboratoria Tbk
14	EKAD	Ekadharna International Tbk
15	GGRM	Gudang Garam Tbk
16	ICBP	Indofood CBP Sukses Makmur Tbk
17	IGAR	Champion Pasific Indonesia Tbk
18	INAI	Indal Aluminium Industry Tbk
19	INCI	Intan Wijaya International Tbk
20	INDF	Indofood Sukses Makmur Tbk
21	INDS	Indospring Tbk
22	INTP	Indocement Tunggul Prakasa Tbk
23	JECC	Jembo Cable Company Tbk
24	JPFA	Japfa Comfeed Indonesia Tbk
25	KAEF	Kimia Farma Tbk
26	KBLF	Kalbe Farma Tbk
27	KBLI	KMI Wire and Cable Tbk
28	KBLM	Kabelindo Murni Tbk
29	KDSI	Kedawung Setia Industrial Tbk
30	LION	Lion Metal Works Tbk
31	LMSH	Lionmesh Prima Tbk
32	MERK	Merck Tbk
33	MLBI	Multi Bintang Indonesia Tbk
34	MYOR	Mayora Indah Tbk
35	NIPS	Nippres Tbk

36	PYFA	Pyridam Farma Tbk
37	RICY	Ricky Putra Globalindo Tbk
38	ROTI	Nippon Indosari Corporindo Tbk
39	SCCO	Supreme Cable Manufacturing and Commerce Tbk
40	SKLT	Sekar Laut Tbk
41	SMGR	Semen Gresik Tbk
42	SMSM	Selamat Sempurna Tbk
43	SRSN	Indo Acitama Tbk
44	STTP	Siantar Top Tbk
45	TCID	Mandom Indonesia Tbk
46	TOTO	Surya Toto Indonesia Tbk
47	TRIS	Trisula International Tbk
48	TRST	Trias Sentosa Tbk
49	TSPC	Tempo Scan Pasific Tbk
50	ULTJ	Ultrajaya Milk Industry and Trading Company Tbk
51	UNIT	Nusantara Inti Corpora Tbk
52	UNVR	Unilever Indonesia Tbk

LAMPIRAN 2

DATA KEUANGAN SEBELUM OUTLIER

NO	PERUSAHAAN	TAHUN	PBV	ROE	CR	DAR	SIZE
1	AISA	2012	1.5540	0.1247	1.2695	0.4742	28.6418
2		2013	1.7754	0.1471	1.7503	0.5306	29.0314
3		2014	1.8804	0.1054	2.6633	0.5137	29.2681
4		2015	0.9817	0.0942	1.6229	0.5622	29.4246
5		2016	1.4680	0.1687	2.3756	0.5392	29.5098
6	AKPI	2012	0.6451	0.0369	1.4044	0.5083	24.1610
7		2013	0.5351	0.0336	1.3591	0.5062	24.2677
8		2014	0.5471	0.0336	1.1319	0.5368	27.7332
9		2015	0.5372	0.0250	1.0306	0.6158	28.3329
10		2016	0.5464	0.0468	1.1288	0.5718	28.3475
11	ALDO	2012	2.4038	0.1239	1.3001	0.5028	26.4864
12		2013	2.5950	0.1615	1.2997	0.5360	26.7131
13		2014	2.7167	0.1416	1.3036	0.5708	26.9256
14		2015	2.3650	0.1409	1.3444	0.5330	27.0118
15		2016	1.6427	0.1256	1.4783	0.5104	27.2252
16	AMFG	2012	1.4661	0.1411	3.8870	0.2113	28.6809
17		2013	1.1004	0.1226	4.1778	0.2200	28.7993
18		2014	1.1265	0.1497	5.6844	0.2141	28.9318
19		2015	0.8385	0.1007	4.6543	0.2061	28.9301
20		2016	0.8079	0.0724	2.0198	0.3462	28.9458
21	APLI	2012	0.5900	0.0192	1.4367	0.3451	26.5630
22		2013	0.4478	0.0086	1.8408	0.2828	26.3636
23		2014	0.5410	0.0432	2.8790	0.1778	26.4071
24		2015	0.4401	0.0084	1.1785	0.2821	26.2865
25		2016	0.6815	0.1019	1.4952	0.2161	26.4907
26	ARNA	2012	4.9768	0.2624	1.1662	0.3548	27.7387
27		2013	7.8335	0.3093	1.2993	0.2966	27.9800
28		2014	7.0192	0.2878	1.6075	0.2778	28.1071
29		2015	4.1026	0.0796	1.0207	0.3747	27.8872
30		2016	4.0266	0.0964	1.3488	0.3856	28.0444
31	ASII	2012	3.4257	0.2532	1.3991	0.5073	32.8677
32		2013	2.5925	0.2100	1.2420	0.5038	32.8983
33		2014	2.5010	0.1841	1.3098	0.4908	32.9378
34		2015	1.9197	0.1234	1.3793	0.4845	32.8470
35		2016	2.3945	0.1308	1.2394	0.4657	32.8300
36	AUTO	2012	2.6009	0.2071	1.1649	0.3824	29.7446
37		2013	1.8404	0.1107	1.8899	0.2424	30.0015

38		2014	1.9958	0.0941	1.3319	0.2950	30.1370
39		2015	0.7603	0.0318	1.3229	0.2926	30.0926
40		2016	0.9377	0.0459	1.5051	0.2789	30.1810
41	BUDI	2012	0.5471	0.0060	1.1141	0.6286	28.4619
42		2013	0.5048	0.0485	1.0763	0.6285	28.5745
43		2014	0.4825	0.0314	1.0459	0.6330	28.4570
44		2015	0.2564	0.0191	1.0008	0.6616	28.4976
45		2016	0.3360	0.0332	1.0014	0.6026	28.5342
46	CPIN	2012	7.3201	0.3279	3.3128	0.3379	30.6902
47		2013	5.5616	0.2541	3.7923	0.2191	30.8761
48		2014	5.6323	0.1586	2.2407	0.4720	31.0035
49		2015	3.3941	0.1459	2.1062	0.4911	31.0358
50		2016	3.5791	0.1591	2.1728	0.4151	31.2753
51	DLTA	2012	6.8259	0.3568	5.2646	0.1974	28.1732
52		2013	8.9941	0.3998	4.7054	0.2197	28.3248
53		2014	8.2130	0.3794	4.3996	0.2377	28.3785
54		2015	4.9003	0.2260	6.4237	0.1817	28.0841
55		2016	3.9544	0.2514	7.6039	0.1548	28.1370
56	DPNS	2012	0.8193	0.1325	8.5923	0.1568	25.7116
57		2013	0.6966	0.2990	10.1742	0.1285	25.6010
58		2014	0.4952	0.0616	12.7248	0.1222	25.6119
59		2015	0.5311	0.0409	13.3500	0.1209	25.4980
60		2016	0.5031	0.0380	15.1646	0.1110	25.4763
61	DVLA	2012	2.2492	0.1769	4.3102	0.2169	27.7148
62		2013	2.6938	0.1375	4.2418	0.2314	27.7279
63		2014	1.9978	0.0861	4.9140	0.2367	27.7298
64		2015	1.4956	0.1108	3.5229	0.2926	27.8981
65		2016	1.8207	0.1409	2.8549	0.2950	28.0035
66	EKAD	2012	1.2740	0.1886	2.4109	0.2991	26.6766
67		2013	1.1465	0.1660	2.3287	0.3082	26.7603
68		2014	1.3433	0.1530	2.3296	0.3493	26.9897
69		2015	0.9574	0.1611	3.5688	0.2508	26.9990
70		2016	0.6964	0.1532	4.8856	0.1573	27.0665
71	GGRM	2012	4.0715	0.1529	2.1702	0.3590	31.5234
72		2013	2.7472	0.1490	1.7221	0.4206	31.6463
73		2014	3.5391	0.1646	1.6202	0.4310	31.8083
74		2015	2.7843	0.1698	1.7704	0.4015	31.8847
75		2016	3.1076	0.1687	1.9379	0.3715	31.9654
76	ICBP	2012	3.7951	0.1904	2.7200	0.3275	30.7091
77		2013	4.6505	0.1748	2.4106	0.4027	30.8537
78		2014	5.2375	0.1765	2.1942	0.4173	31.0330

79		2015	4.7948	0.1784	2.3260	0.3830	31.0886
80		2016	5.4052	0.1963	2.4068	0.3599	31.1710
81	IGAR	2012	1.6269	0.1839	4.3635	0.2251	27.0448
82		2013	1.2705	0.1552	3.3891	0.2828	27.1900
83		2014	1.1885	0.2141	4.1209	0.2651	27.3270
84		2015	0.7014	0.1656	4.9610	0.1914	27.2414
85		2016	1.3526	0.1854	5.8220	0.1495	27.3988
86	INAI	2012	0.5516	0.1792	1.9933	0.7889	27.0909
87		2013	0.7524	0.0397	1.2362	0.8351	27.1858
88		2014	0.9108	0.1841	1.0824	0.8638	27.5622
89		2015	0.5350	0.1193	1.0035	0.8197	27.9565
90		2016	0.7919	0.1378	1.0029	0.8073	27.8814
91	INCI	2012	0.3832	0.0384	7.7109	0.1249	24.8919
92		2013	0.3446	0.0819	13.8713	0.0738	25.1207
93		2014	0.3158	0.0810	12.8634	0.0767	25.4240
94		2015	0.3584	0.1101	9.6773	0.0914	25.6408
95		2016	0.2281	0.0411	5.8150	0.0985	25.8941
96	INDF	2012	1.5045	0.1400	2.0489	0.4251	31.5471
97		2013	1.5102	0.0890	1.6673	0.5086	31.6868
98		2014	1.4716	0.1298	1.8125	0.5321	31.7835
99		2015	1.0537	0.0860	1.7053	0.5304	31.7924
100		2016	1.5836	0.1199	1.5081	0.4653	31.8320
101	INDS	2012	1.1640	0.1180	2.3609	0.3173	28.0210
102		2013	0.8012	0.0842	3.8559	0.2020	28.1631
103		2014	0.5761	0.0701	2.9122	0.2015	28.2553
104		2015	0.1197	0.0010	2.2313	0.2486	28.1375
105		2016	0.2570	0.0240	3.0327	0.1652	28.1239
106	INTP	2012	4.2559	0.2453	6.0276	0.1466	30.4812
107		2013	3.2351	0.2202	6.1483	0.1448	30.6112
108		2014	3.7446	0.2154	4.9339	0.1491	30.6266
109		2015	3.4435	0.1825	4.8866	0.1365	30.5101
110		2016	2.1689	0.1481	4.5250	0.1331	30.3629
111	JECC	2012	2.0107	0.2224	1.1562	0.7985	27.8420
112		2013	2.9183	0.1527	0.9779	0.8809	28.0298
113		2014	2.1354	0.1437	1.0320	0.8436	28.0318
114		2015	0.5550	0.0067	1.0501	0.7293	28.1398
115		2016	1.1251	0.2815	1.1402	0.7037	28.3429
116	JPFA	2012	2.7528	0.2256	1.8245	0.5654	30.5121
117		2013	2.4796	0.1221	2.0646	0.6484	30.6950
118		2014	1.9553	0.0757	1.7715	0.6713	30.8280
119		2015	1.1080	0.0858	1.7943	0.6439	30.8508

120		2016	1.7713	0.2317	2.0664	0.5131	30.9292
121	KAEF	2012	2.8511	0.1427	2.8031	0.3057	28.9486
122		2013	2.0173	0.1328	2.4267	0.3429	29.1008
123		2014	4.7276	0.1498	2.3870	0.4287	29.1398
124		2015	2.5949	0.1359	1.9302	0.4246	29.2121
125		2016	6.7240	0.1196	1.7137	0.5076	29.3909
126	KBLF	2012	7.3019	0.2408	3.4054	0.2173	30.2438
127		2013	6.8934	0.2318	2.8393	0.2488	30.4037
128		2014	8.7854	0.2174	3.4036	0.2151	30.4857
129		2015	5.6568	0.1881	3.6978	0.2014	30.5151
130		2016	5.6977	0.1886	4.1311	0.1814	30.5950
131	KBLI	2012	0.8867	0.1481	3.0708	0.2725	28.5758
132		2013	0.6418	0.0829	2.5502	0.3368	28.4522
133		2014	0.6011	0.0777	3.3263	0.3089	28.4998
134		2015	0.4642	0.1123	2.8476	0.3380	28.6101
135		2016	0.8370	0.2530	3.4106	0.2939	28.6650
136	KBLM	2012	0.5711	0.0900	0.9751	0.6338	27.6510
137		2013	0.6562	0.0285	0.9565	0.5879	27.6633
138		2014	0.2682	0.0317	1.0410	0.5515	27.5471
139		2015	0.4987	0.0430	1.0573	0.5469	27.5982
140		2016	0.8383	0.0663	1.3016	0.4983	27.6184
141	KDSI	2012	0.6344	0.1166	1.5911	0.4462	27.8944
142		2013	0.3969	0.1023	1.4446	0.5860	27.9577
143		2014	0.3963	0.1228	1.3679	0.6126	28.1173
144		2015	0.2041	0.0303	1.1566	0.6781	28.1698
145		2016	0.3377	0.1123	1.2319	0.6325	28.3218
146	LION	2012	1.4549	0.2296	9.3446	0.1423	26.5342
147		2013	1.5012	0.1558	6.7289	0.1660	26.5334
148		2014	1.1357	0.1144	3.6878	0.2962	26.6572
149		2015	0.1201	0.1012	3.8023	0.2889	26.6875
150		2016	0.1161	0.0900	3.5587	0.3138	26.6612
151	LMSH	2012	1.0336	0.4233	4.0674	0.2413	26.1308
152		2013	0.6952	0.1302	4.1966	0.2209	26.2693
153		2014	0.5499	0.0675	5.3333	0.2017	26.2410
154		2015	0.0491	0.0173	8.0889	0.1595	25.8858
155		2016	0.0483	0.0533	2.7701	0.2795	25.7849
156	MERK	2012	8.1700	0.2587	3.8712	0.2681	27.5583
157		2013	8.2652	0.3425	3.9795	0.2651	27.8083
158		2014	6.5853	0.3347	4.5859	0.2346	27.4839
159		2015	6.4096	0.3010	3.6522	0.2620	27.6143
160		2016	7.0736	0.2640	4.2166	0.2168	27.6652

161	MLBI	2012	47.2689	1.3746	0.5805	0.7137	28.0802
162		2013	25.6032	1.1860	0.9775	0.4459	28.9013
163		2014	0.4547	1.4353	0.5139	0.7518	28.7258
164		2015	0.2254	0.6483	0.5842	0.6352	28.6229
165		2016	0.3017	1.1968	0.6795	0.6393	28.8138
166	MYOR	2012	4.9975	0.2427	2.7611	0.6305	29.9834
167		2013	5.9036	0.2687	2.4434	0.5944	30.1174
168		2014	4.5847	0.1005	2.0899	0.6041	30.2821
169		2015	5.2513	0.2407	2.3653	0.5420	30.3269
170		2016	5.8705	0.2216	2.2502	0.5152	30.5406
171	NIPS	2012	0.4058	0.1069	1.1064	0.6149	27.2782
172		2013	0.9918	0.1436	1.0511	0.7045	27.5379
173		2014	1.2435	0.0854	1.2939	0.5176	27.6468
174		2015	1.0375	0.0504	1.0473	0.6065	27.6188
175		2016	0.6871	0.0780	1.2182	0.5261	27.6699
176	PYFA	2012	0.7138	0.0605	2.4134	0.3544	25.8979
177		2013	0.8358	0.0658	1.5368	0.4624	25.9837
178		2014	0.7440	0.0274	1.6268	0.4373	26.1273
179		2015	0.5921	0.0305	1.9912	0.3672	26.1070
180		2016	1.0143	0.0488	2.1908	0.3684	26.1029
181	RICY	2012	0.3043	0.0143	2.2530	0.5644	25.8362
182		2013	0.3002	0.0130	2.0997	0.5720	26.2713
183		2014	0.2861	0.0388	1.3283	0.6670	27.8011
184		2015	0.2550	0.0337	1.1856	0.6661	27.7363
185		2016	0.2396	0.0340	1.1487	0.6799	27.8311
186	ROTI	2012	10.4789	0.2237	1.1246	0.4468	27.8057
187		2013	6.5576	0.2007	1.1364	0.5680	28.0402
188		2014	7.3018	0.1964	1.3664	0.5520	28.2624
189		2015	5.3875	0.2276	2.0534	0.5608	28.4078
190		2016	5.6135	0.1939	2.9623	0.5058	28.5560
191	SCCO	2012	1.2730	0.2595	1.4621	0.5601	28.8960
192		2013	1.2783	0.1483	1.3942	0.5984	28.9531
193		2014	1.0026	0.1699	1.5663	0.5109	28.9402
194		2015	0.8303	0.1725	1.6858	0.4798	28.8932
195		2016	1.2255	0.2791	1.6895	0.5019	28.9508
196	SKLT	2012	0.9602	0.0615	1.4148	0.4815	26.7190
197		2013	0.8903	0.0819	1.2275	0.5376	27.0637
198		2014	1.3511	0.1075	1.1838	0.5375	27.2474
199		2015	1.6809	0.1320	1.1925	0.5968	27.3368
200		2016	0.7184	0.0697	1.3153	0.4788	27.4493
201	SMGR	2012	5.1756	0.2712	1.7059	0.3166	30.6065

202		2013	3.8493	0.2456	1.8824	0.2919	30.8297
203		2014	3.8429	0.2227	2.2095	0.2717	30.9264
204		2015	2.4642	0.1649	1.5970	0.2808	30.9249
205		2016	1.7800	0.1483	1.2725	0.3087	30.8943
206	SMSM	2012	4.4314	0.3274	1.9442	0.4308	28.4029
207		2013	4.9604	0.3503	2.1120	0.4171	28.4952
208		2014	6.0942	0.3762	2.1120	0.3616	28.5991
209		2015	4.7581	0.3203	2.3938	0.3513	28.6617
210		2016	2.5420	0.2262	2.8603	0.2992	28.6888
211	SRSN	2012	1.1181	0.0630	2.7521	0.3305	26.6743
212		2013	0.9575	0.0509	3.2813	0.2529	26.6953
213		2014	0.9289	0.0451	2.8710	0.3031	26.8820
214		2015	0.8851	0.0456	2.1671	0.4076	26.9991
215		2016	0.7487	0.0275	1.7426	0.4394	26.9390
216		2012	2.3728	0.1287	0.9975	0.5362	27.8808
217	STTP	2013	2.9253	0.1649	1.1424	0.5278	28.1587
218		2014	4.6263	0.1516	1.4842	0.5203	28.4060
219		2015	3.9152	0.1841	1.5789	0.4745	28.5649
220		2016	3.5763	0.1491	1.6545	0.4999	28.5977
221	TCID	2012	2.0165	0.0137	7.7265	0.1306	28.2468
222		2013	2.0226	0.1354	3.5732	0.1930	28.3380
223		2014	2.7454	0.1358	1.7982	0.3074	28.4675
224		2015	1.9346	0.3175	4.9911	0.1764	28.4704
225		2016	1.4095	0.0909	5.2595	0.1839	28.5580
226	TOTO	2012	3.6676	0.2627	2.1544	0.4101	28.0864
227		2013	3.6830	0.2284	2.1950	0.4069	28.1683
228		2014	3.4978	0.2628	2.1085	0.4541	28.3506
229		2015	4.8087	0.1912	2.4085	0.3886	28.4546
230		2016	0.3373	0.1106	2.1899	0.4097	28.3581
231	TRIS	2012	1.4017	0.1830	2.5012	0.3377	27.0492
232		2013	1.4206	0.1707	2.3030	0.3713	27.2310
233		2014	1.2043	0.1184	2.0231	0.4088	27.3391
234		2015	0.9527	0.1138	1.8875	0.4268	27.4799
235		2016	1.0134	0.0727	1.6417	0.4581	27.5278
236	TRST	2012	0.7160	0.0454	1.3033	0.3817	28.2984
237		2013	0.4112	0.0193	1.1429	0.4765	28.3406
238		2014	0.6075	0.0172	1.2378	0.4614	28.5505
239		2015	0.4448	0.0129	1.3085	0.4171	28.5301
240		2016	0.4359	0.0175	1.2970	0.4128	28.4417
241	TSPC	2012	4.9990	0.1894	3.0933	0.2762	29.5227
242		2013	3.7860	0.1653	2.9619	0.2857	29.5560

243		2014	3.1583	0.1435	3.0022	0.2723	29.6475
244		2015	1.8157	0.1220	2.5376	0.3099	29.7329
245		2016	1.9125	0.1177	2.6521	0.2962	29.8435
246	ULTJ	2012	2.2914	0.2108	2.0182	0.3075	28.6642
247		2013	6.4500	0.1613	2.4701	0.2833	28.8724
248		2014	4.7265	0.1245	3.3446	0.2210	28.9963
249		2015	4.0732	0.1870	3.7455	0.2097	29.1112
250		2016	3.7830	0.2034	4.8436	0.1769	29.1756
251	UNIT	2012	0.1082	0.0015	0.5843	0.3671	25.2059
252		2013	0.0782	0.0034	0.4031	0.4745	25.3471
253		2014	0.0990	0.0015	0.4507	0.4501	25.3526
254		2015	0.0807	0.0016	0.5962	0.4724	25.4962
255		2016	0.1113	0.0035	0.6486	0.4363	25.3687
256	UNVR	2012	40.0884	1.2194	0.6683	0.6689	30.9380
257		2013	46.6264	1.2581	0.6964	0.6813	31.0572
258		2014	51.9221	1.2486	0.7149	0.6676	31.1723
259		2015	58.4812	1.2122	0.6540	0.6931	31.2279
260		2016	62.9311	1.3585	0.6056	1.8278	31.3212

LAMPIRAN 3

DATA KEUANGAN SETELAH OUTLIER

NO	PERUSAHAAN	TAHUN	PBV	ROE	CR	DAR	SIZE
1	AISA	2012	1.5540	0.1247	1.2695	0.4742	28.6418
2		2013	1.7754	0.1471	1.7503	0.5306	29.0314
3		2014	1.8804	0.1054	2.6633	0.5137	29.2681
4		2015	0.9817	0.0942	1.6229	0.5622	29.4246
5		2016	1.4680	0.1687	2.3756	0.5392	29.5098
6	AKPI	2012	0.6451	0.0369	1.4044	0.5083	24.1610
7		2013	0.5351	0.0336	1.3591	0.5062	24.2677
8		2014	0.5471	0.0336	1.1319	0.5368	27.7332
9		2015	0.5372	0.0250	1.0306	0.6158	28.3329
10		2016	0.5464	0.0468	1.1288	0.5718	28.3475
11	ALDO	2012	2.4038	0.1239	1.3001	0.5028	26.4864
12		2013	2.5950	0.1615	1.2997	0.5360	26.7131
13		2014	2.7167	0.1416	1.3036	0.5708	26.9256
14		2015	2.3650	0.1409	1.3444	0.5330	27.0118
15		2016	1.6427	0.1256	1.4783	0.5104	27.2252
16	AMFG	2012	1.4661	0.1411	3.8870	0.2113	28.6809
17		2013	1.1004	0.1226	4.1778	0.2200	28.7993
18		2014	1.1265	0.1497	5.6844	0.2141	28.9318
19		2015	0.8385	0.1007	4.6543	0.2061	28.9301
20		2016	0.8079	0.0724	2.0198	0.3462	28.9458
21	APLI	2012	0.5900	0.0192	1.4367	0.3451	26.5630
22		2013	0.4478	0.0086	1.8408	0.2828	26.3636
23		2014	0.5410	0.0432	2.8790	0.1778	26.4071
24		2015	0.4401	0.0084	1.1785	0.2821	26.2865
25		2016	0.6815	0.1019	1.4952	0.2161	26.4907
26	ARNA	2012	4.9768	0.2624	1.1662	0.3548	27.7387
27		2013	7.8335	0.3093	1.2993	0.2966	27.9800
28		2014	7.0192	0.2878	1.6075	0.2778	28.1071
29		2015	4.1026	0.0796	1.0207	0.3747	27.8872
30		2016	4.0266	0.0964	1.3488	0.3856	28.0444
31	ASII	2012	3.4257	0.2532	1.3991	0.5073	
32		2013	2.5925	0.2100	1.2420	0.5038	
33		2014	2.5010	0.1841	1.3098	0.4908	
34		2015	1.9197	0.1234	1.3793	0.4845	
35		2016	2.3945	0.1308	1.2394	0.4657	
36	AUTO	2012	2.6009	0.2071	1.1649	0.3824	29.7446
37		2013	1.8404	0.1107	1.8899	0.2424	30.0015

38		2014	1.9958	0.0941	1.3319	0.2950	30.1370
39		2015	0.7603	0.0318	1.3229	0.2926	30.0926
40		2016	0.9377	0.0459	1.5051	0.2789	30.1810
41	BUDI	2012	0.5471	0.0060	1.1141	0.6286	28.4619
42		2013	0.5048	0.0485	1.0763	0.6285	28.5745
43		2014	0.4825	0.0314	1.0459	0.6330	28.4570
44		2015	0.2564	0.0191	1.0008	0.6616	28.4976
45		2016	0.3360	0.0332	1.0014	0.6026	28.5342
46	CPIN	2012	7.3201	0.3279	3.3128	0.3379	30.6902
47		2013	5.5616	0.2541	3.7923	0.2191	30.8761
48		2014	5.6323	0.1586	2.2407	0.4720	31.0035
49		2015	3.3941	0.1459	2.1062	0.4911	31.0358
50		2016	3.5791	0.1591	2.1728	0.4151	31.2753
51	DLTA	2012	6.8259	0.3568	5.2646	0.1974	28.1732
52		2013			4.7054	0.2197	28.3248
53		2014	8.2130	0.3794	4.3996	0.2377	28.3785
54		2015	4.9003	0.2260		0.1817	28.0841
55		2016	3.9544	0.2514		0.1548	28.1370
56	DPNS	2012	0.8193	0.1325		0.1568	25.7116
57		2013	0.6966	0.2990		0.1285	25.6010
58		2014	0.4952	0.0616		0.1222	25.6119
59		2015	0.5311	0.0409		0.1209	25.4980
60		2016	0.5031	0.0380		0.1110	25.4763
61	DVLA	2012	2.2492	0.1769	4.3102	0.2169	27.7148
62		2013	2.6938	0.1375	4.2418	0.2314	27.7279
63		2014	1.9978	0.0861	4.9140	0.2367	27.7298
64		2015	1.4956	0.1108	3.5229	0.2926	27.8981
65		2016	1.8207	0.1409	2.8549	0.2950	28.0035
66	EKAD	2012	1.2740	0.1886	2.4109	0.2991	26.6766
67		2013	1.1465	0.1660	2.3287	0.3082	26.7603
68		2014	1.3433	0.1530	2.3296	0.3493	26.9897
69		2015	0.9574	0.1611	3.5688	0.2508	26.9990
70		2016	0.6964	0.1532	4.8856	0.1573	27.0665
71	GGRM	2012	4.0715	0.1529	2.1702	0.3590	31.5234
72		2013	2.7472	0.1490	1.7221	0.4206	31.6463
73		2014	3.5391	0.1646	1.6202	0.4310	31.8083
74		2015	2.7843	0.1698	1.7704	0.4015	31.8847
75		2016	3.1076	0.1687	1.9379	0.3715	31.9654
76	ICBP	2012	3.7951	0.1904	2.7200	0.3275	30.7091
77		2013	4.6505	0.1748	2.4106	0.4027	30.8537
78		2014	5.2375	0.1765	2.1942	0.4173	31.0330

79		2015	4.7948	0.1784	2.3260	0.3830	31.0886
80		2016	5.4052	0.1963	2.4068	0.3599	31.1710
81	IGAR	2012	1.6269	0.1839	4.3635	0.2251	27.0448
82		2013	1.2705	0.1552	3.3891	0.2828	27.1900
83		2014	1.1885	0.2141	4.1209	0.2651	27.3270
84		2015	0.7014	0.1656	4.9610	0.1914	27.2414
85		2016	1.3526	0.1854	5.8220	0.1495	27.3988
86	INAI	2012	0.5516	0.1792	1.9933	0.7889	27.0909
87		2013	0.7524	0.0397	1.2362	0.8351	27.1858
88		2014	0.9108	0.1841	1.0824	0.8638	27.5622
89		2015	0.5350	0.1193	1.0035	0.8197	27.9565
90		2016	0.7919	0.1378	1.0029	0.8073	27.8814
91	INCI	2012	0.3832	0.0384		0.1249	24.8919
92		2013	0.3446	0.0819		0.0738	25.1207
93		2014	0.3158	0.0810		0.0767	25.4240
94		2015	0.3584	0.1101		0.0914	25.6408
95		2016	0.2281	0.0411	5.8150	0.0985	25.8941
96	INDF	2012	1.5045	0.1400	2.0489	0.4251	31.5471
97		2013	1.5102	0.0890	1.6673	0.5086	31.6868
98		2014	1.4716	0.1298	1.8125	0.5321	31.7835
99		2015	1.0537	0.0860	1.7053	0.5304	31.7924
100		2016	1.5836	0.1199	1.5081	0.4653	31.8320
101	INDS	2012	1.1640	0.1180	2.3609	0.3173	28.0210
102		2013	0.8012	0.0842	3.8559	0.2020	28.1631
103		2014	0.5761	0.0701	2.9122	0.2015	28.2553
104		2015	0.1197	0.0010	2.2313	0.2486	28.1375
105		2016	0.2570	0.0240	3.0327	0.1652	28.1239
106	INTP	2012	4.2559	0.2453	6.0276	0.1466	30.4812
107		2013	3.2351	0.2202	6.1483	0.1448	30.6112
108		2014	3.7446	0.2154	4.9339	0.1491	30.6266
109		2015	3.4435	0.1825	4.8866	0.1365	30.5101
110		2016	2.1689	0.1481	4.5250	0.1331	30.3629
111	JECC	2012	2.0107	0.2224	1.1562	0.7985	27.8420
112		2013	2.9183	0.1527	0.9779	0.8809	28.0298
113		2014	2.1354	0.1437	1.0320	0.8436	28.0318
114		2015	0.5550	0.0067	1.0501	0.7293	28.1398
115		2016	1.1251	0.2815	1.1402	0.7037	28.3429
116	JPFA	2012	2.7528	0.2256	1.8245	0.5654	30.5121
117		2013	2.4796	0.1221	2.0646	0.6484	30.6950
118		2014	1.9553	0.0757	1.7715	0.6713	30.8280
119		2015	1.1080	0.0858	1.7943	0.6439	30.8508

120		2016	1.7713	0.2317	2.0664	0.5131	30.9292
121	KAEF	2012	2.8511	0.1427	2.8031	0.3057	28.9486
122		2013	2.0173	0.1328	2.4267	0.3429	29.1008
123		2014	4.7276	0.1498	2.3870	0.4287	29.1398
124		2015	2.5949	0.1359	1.9302	0.4246	29.2121
125		2016	6.7240	0.1196	1.7137	0.5076	29.3909
126	KBLF	2012	7.3019	0.2408	3.4054	0.2173	30.2438
127		2013	6.8934	0.2318	2.8393	0.2488	30.4037
128		2014		0.2174	3.4036	0.2151	30.4857
129		2015	5.6568	0.1881	3.6978	0.2014	30.5151
130		2016	5.6977	0.1886	4.1311	0.1814	30.5950
131	KBLI	2012	0.8867	0.1481	3.0708	0.2725	28.5758
132		2013	0.6418	0.0829	2.5502	0.3368	28.4522
133		2014	0.6011	0.0777	3.3263	0.3089	28.4998
134		2015	0.4642	0.1123	2.8476	0.3380	28.6101
135		2016	0.8370	0.2530	3.4106	0.2939	28.6650
136	KBLM	2012	0.5711	0.0900	0.9751	0.6338	27.6510
137		2013	0.6562	0.0285	0.9565	0.5879	27.6633
138		2014	0.2682	0.0317	1.0410	0.5515	27.5471
139		2015	0.4987	0.0430	1.0573	0.5469	27.5982
140		2016	0.8383	0.0663	1.3016	0.4983	27.6184
141	KDSI	2012	0.6344	0.1166	1.5911	0.4462	27.8944
142		2013	0.3969	0.1023	1.4446	0.5860	27.9577
143		2014	0.3963	0.1228	1.3679	0.6126	28.1173
144		2015	0.2041	0.0303	1.1566	0.6781	28.1698
145		2016	0.3377	0.1123	1.2319	0.6325	28.3218
146	LION	2012	1.4549	0.2296		0.1423	26.5342
147		2013	1.5012	0.1558		0.1660	26.5334
148		2014	1.1357	0.1144	3.6878	0.2962	26.6572
149		2015	0.1201	0.1012	3.8023	0.2889	26.6875
150		2016	0.1161	0.0900	3.5587	0.3138	26.6612
151	LMSH	2012	1.0336		4.0674	0.2413	26.1308
152		2013	0.6952	0.1302	4.1966	0.2209	26.2693
153		2014	0.5499	0.0675	5.3333	0.2017	26.2410
154		2015	0.0491	0.0173		0.1595	25.8858
155		2016	0.0483	0.0533	2.7701	0.2795	25.7849
156	MERK	2012	8.1700	0.2587	3.8712	0.2681	27.5583
157		2013	8.2652	0.3425	3.9795	0.2651	27.8083
158		2014	6.5853	0.3347	4.5859	0.2346	27.4839
159		2015	6.4096	0.3010	3.6522	0.2620	27.6143
160		2016	7.0736	0.2640	4.2166	0.2168	27.6652

161	MLBI	2012			0.5805	0.7137	28.0802
162		2013			0.9775	0.4459	28.9013
163		2014	0.4547		0.5139	0.7518	28.7258
164		2015	0.2254		0.5842	0.6352	28.6229
165		2016	0.3017		0.6795	0.6393	28.8138
166	MYOR	2012	4.9975	0.2427	2.7611	0.6305	29.9834
167		2013	5.9036	0.2687	2.4434	0.5944	30.1174
168		2014	4.5847	0.1005	2.0899	0.6041	30.2821
169		2015	5.2513	0.2407	2.3653	0.5420	30.3269
170		2016	5.8705	0.2216	2.2502	0.5152	30.5406
171	NIPS	2012	0.4058	0.1069	1.1064	0.6149	27.2782
172		2013	0.9918	0.1436	1.0511	0.7045	27.5379
173		2014	1.2435	0.0854	1.2939	0.5176	27.6468
174		2015	1.0375	0.0504	1.0473	0.6065	27.6188
175		2016	0.6871	0.0780	1.2182	0.5261	27.6699
176	PYFA	2012	0.7138	0.0605	2.4134	0.3544	25.8979
177		2013	0.8358	0.0658	1.5368	0.4624	25.9837
178		2014	0.7440	0.0274	1.6268	0.4373	26.1273
179		2015	0.5921	0.0305	1.9912	0.3672	26.1070
180		2016	1.0143	0.0488	2.1908	0.3684	26.1029
181	RICY	2012	0.3043	0.0143	2.2530	0.5644	25.8362
182		2013	0.3002	0.0130	2.0997	0.5720	26.2713
183		2014	0.2861	0.0388	1.3283	0.6670	27.8011
184		2015	0.2550	0.0337	1.1856	0.6661	27.7363
185		2016	0.2396	0.0340	1.1487	0.6799	27.8311
186	ROTI	2012		0.2237	1.1246	0.4468	27.8057
187		2013	6.5576	0.2007	1.1364	0.5680	28.0402
188		2014	7.3018	0.1964	1.3664	0.5520	28.2624
189		2015	5.3875	0.2276	2.0534	0.5608	28.4078
190		2016	5.6135	0.1939	2.9623	0.5058	28.5560
191	SCCO	2012	1.2730	0.2595	1.4621	0.5601	28.8960
192		2013	1.2783	0.1483	1.3942	0.5984	28.9531
193		2014	1.0026	0.1699	1.5663	0.5109	28.9402
194		2015	0.8303	0.1725	1.6858	0.4798	28.8932
195		2016	1.2255	0.2791	1.6895	0.5019	28.9508
196	SKLT	2012	0.9602	0.0615	1.4148	0.4815	26.7190
197		2013	0.8903	0.0819	1.2275	0.5376	27.0637
198		2014	1.3511	0.1075	1.1838	0.5375	27.2474
199		2015	1.6809	0.1320	1.1925	0.5968	27.3368
200		2016	0.7184	0.0697	1.3153	0.4788	27.4493
201	SMGR	2012	5.1756	0.2712	1.7059	0.3166	30.6065

202		2013	3.8493	0.2456	1.8824	0.2919	30.8297
203		2014	3.8429	0.2227	2.2095	0.2717	30.9264
204		2015	2.4642	0.1649	1.5970	0.2808	30.9249
205		2016	1.7800	0.1483	1.2725	0.3087	30.8943
206	SMSM	2012	4.4314	0.3274	1.9442	0.4308	28.4029
207		2013	4.9604	0.3503	2.1120	0.4171	28.4952
208		2014	6.0942	0.3762	2.1120	0.3616	28.5991
209		2015	4.7581	0.3203	2.3938	0.3513	28.6617
210		2016	2.5420	0.2262	2.8603	0.2992	28.6888
211	SRSN	2012	1.1181	0.0630	2.7521	0.3305	26.6743
212		2013	0.9575	0.0509	3.2813	0.2529	26.6953
213		2014	0.9289	0.0451	2.8710	0.3031	26.8820
214		2015	0.8851	0.0456	2.1671	0.4076	26.9991
215		2016	0.7487	0.0275	1.7426	0.4394	26.9390
216	STTP	2012	2.3728	0.1287	0.9975	0.5362	27.8808
217		2013	2.9253	0.1649	1.1424	0.5278	28.1587
218		2014	4.6263	0.1516	1.4842	0.5203	28.4060
219		2015	3.9152	0.1841	1.5789	0.4745	28.5649
220		2016	3.5763	0.1491	1.6545	0.4999	28.5977
221	TCID	2012	2.0165	0.0137		0.1306	28.2468
222		2013	2.0226	0.1354	3.5732	0.1930	28.3380
223		2014	2.7454	0.1358	1.7982	0.3074	28.4675
224		2015	1.9346	0.3175	4.9911	0.1764	28.4704
225		2016	1.4095	0.0909	5.2595	0.1839	28.5580
226	TOTO	2012	3.6676	0.2627	2.1544	0.4101	28.0864
227		2013	3.6830	0.2284	2.1950	0.4069	28.1683
228		2014	3.4978	0.2628	2.1085	0.4541	28.3506
229		2015	4.8087	0.1912	2.4085	0.3886	28.4546
230		2016	0.3373	0.1106	2.1899	0.4097	28.3581
231	TRIS	2012	1.4017	0.1830	2.5012	0.3377	27.0492
232		2013	1.4206	0.1707	2.3030	0.3713	27.2310
233		2014	1.2043	0.1184	2.0231	0.4088	27.3391
234		2015	0.9527	0.1138	1.8875	0.4268	27.4799
235		2016	1.0134	0.0727	1.6417	0.4581	27.5278
236	TRST	2012	0.7160	0.0454	1.3033	0.3817	28.2984
237		2013	0.4112	0.0193	1.1429	0.4765	28.3406
238		2014	0.6075	0.0172	1.2378	0.4614	28.5505
239		2015	0.4448	0.0129	1.3085	0.4171	28.5301
240		2016	0.4359	0.0175	1.2970	0.4128	28.4417
241	TSPC	2012	4.9990	0.1894	3.0933	0.2762	29.5227
242		2013	3.7860	0.1653	2.9619	0.2857	29.5560

243		2014	3.1583	0.1435	3.0022	0.2723	29.6475
244		2015	1.8157	0.1220	2.5376	0.3099	29.7329
245		2016	1.9125	0.1177	2.6521	0.2962	29.8435
246	ULTJ	2012	2.2914	0.2108	2.0182	0.3075	28.6642
247		2013	6.4500	0.1613	2.4701	0.2833	28.8724
248		2014	4.7265	0.1245	3.3446	0.2210	28.9963
249		2015	4.0732	0.1870	3.7455	0.2097	29.1112
250		2016	3.7830	0.2034	4.8436	0.1769	29.1756
251	UNIT	2012	0.1082	0.0015	0.5843	0.3671	25.2059
252		2013	0.0782	0.0034	0.4031	0.4745	25.3471
253		2014	0.0990	0.0015	0.4507	0.4501	25.3526
254		2015	0.0807	0.0016	0.5962	0.4724	25.4962
255		2016	0.1113	0.0035	0.6486	0.4363	25.3687
256	UNVR	2012			0.6683	0.6689	30.9380
257		2013			0.6964	0.6813	31.0572
258		2014			0.7149	0.6676	31.1723
259		2015			0.6540	0.6931	31.2279
260		2016			0.6056		31.3212

LAMPIRAN 4
DATA NILAI PERUSAHAAN (PBV)

PERUSAHAAN	TAHUN	ekuitas	closing price	jumlah lembar saham	nilai buku	PBV
AISA	2012	2,033,453,000,000	1,080	2,926,000,000	694.960	1.5540
	2013	2,356,773,000,000	1,430	2,926,000,000	805.459	1.7754
	2014	3,585,936,000,000	2,095	3,218,600,000	1,114.129	1.8804
	2015	3,966,907,000,000	1,210	3,218,600,000	1,232.495	0.9817
	2016	4,264,400,000,000	1,945	3,218,600,000	1,324.924	1.4680
AKPI	2012	843,266,716,000	800	680,000,000	1,240.098	0.6451
	2013	1,029,336,226,000	810	680,000,000	1,513.730	0.5351
	2014	1,031,605,289,000	830	680,000,000	1,517.067	0.5471
	2015	1,107,565,893,000	875	680,000,000	1,628.773	0.5372
	2016	1,120,035,169,000	900	680,000,000	1,647.111	0.5464
ALDO	2012	107,536,357,440	470	550,000,000	195.521	2.4038
	2013	139,883,299,162	660	550,000,000	254.333	2.5950
	2014	148,803,798,920	735	550,000,000	270.552	2.7167
	2015	170,929,026,813	735	550,000,000	310.780	2.3650
	2016	200,887,900,422	600	550,000,000	365.251	1.6427
AMFG	2012	2,457,049,000,000	8,300	434,000,000	5,661.403	1.4661
	2013	2,760,727,000,000	7,000	434,000,000	6,361.122	1.1004
	2014	3,101,440,000,000	8,050	434,000,000	7,146.175	1.1265
	2015	3,390,223,000,000	6,550	434,000,000	7,811.574	0.8385
	2016	3,599,264,000,000	6,700	434,000,000	8,293.235	0.8079
APLI	2012	218,635,793,389	86	1,500,000,000	145.757	0.5900
	2013	217,723,188,925	65	1,500,000,000	145.149	0.4478
	2014	224,572,991,214	81	1,500,000,000	149.715	0.5410
	2015	221,561,080,751	65	1,500,000,000	147.707	0.4401
	2016	246,501,444,451	112	1,500,000,000	164.334	0.6815
ARNA	2012	604,808,179,406	1,640	1,835,357,744	329.531	4.9768
	2013	768,489,883,529	820	7,341,430,976	104.678	7.8335
	2014	909,942,258,556	870	7,341,430,976	123.946	7.0192
	2015	894,728,477,056	500	7,341,430,976	121.874	4.1026
	2016	948,088,201,259	520	7,341,430,976	129.142	4.0266
ASII	2012	89,814,000,000,000	7,600	40,483,553,140	2,218.531	3.4257
	2013	106,188,000,000,000	6,800	40,483,553,140	2,622.991	2.5925
	2014	120,187,000,000,000	7,425	40,483,553,140	2,968.786	2.5010

	2015	126,533,000,000,000	6,000	40,483,553,140	3,125.541	1.9197
	2016	139,906,000,000,000	8,275	40,483,553,140	3,455.873	2.3945
AUTO	2012	5,485,099,000,000	3,700	3,855,786,400	1,422.563	2.6009
	2013	9,558,754,000,000	3,650	4,819,733,000	1,983.254	1.8404
	2014	10,142,706,000,000	4,200	4,819,733,000	2,104.412	1.9958
	2015	10,143,426,000,000	1,600	4,819,733,000	2,104.562	0.7603
	2016	10,536,558,000,000	2,050	4,819,733,000	2,186.129	0.9377
BUDI	2012	854,135,000,000	114	4,098,997,362	208.377	0.5471
	2013	885,121,000,000	109	4,098,997,362	215.936	0.5048
	2014	908,931,000,000	107	4,098,997,362	221.745	0.4825
	2015	1,105,251,000,000	63	4,498,997,362	245.666	0.2564
	2016	1,164,982,000,000	87	4,498,997,362	258.943	0.3360
CPIN	2012	8,176,464,000,000	3,650	16,398,000,000	498.626	7.3201
	2013	9,950,900,000,000	3,375	16,398,000,000	606.836	5.5616
	2014	11,005,218,000,000	3,780	16,398,000,000	671.132	5.6323
	2015	12,561,427,000,000	2,600	16,398,000,000	766.034	3.3941
	2016	14,157,243,000,000	3,090	16,398,000,000	863.352	3.5791
DLTA	2012	598,211,513,000	255,000	16,013,181	37,357.444	6.8259
	2013	676,557,993,000	380,000	16,013,181	42,250.068	8.9941
	2014	760,396,104,000	390,000	16,013,181	47,485.637	8.2130
	2015	849,621,481,000	5,200	800,659,050	1,061.153	4.9003
	2016	1,012,374,008,000	5,000	800,659,050	1,264.426	3.9544
DPNS	2012	155,593,301,345	385	331,129,952	469.886	0.8193
	2013	223,427,964,789	470	331,129,952	674.744	0.6966
	2014	236,041,363,276	353	331,129,952	712.836	0.4952
	2015	241,296,079,044	387	331,129,952	728.705	0.5311
	2016	263,264,403,585	400	331,129,952	795.049	0.5031
DVLA	2012	841,546,479,000	1,690	1,120,000,000	751.381	2.2492
	2013	914,702,952,000	2,200	1,120,000,000	816.699	2.6938
	2014	947,454,725,000	1,690	1,120,000,000	845.942	1.9978
	2015	973,517,334,000	1,300	1,120,000,000	869.212	1.4956
	2016	1,079,579,612,000	1,755	1,120,000,000	963.910	1.8207
EKAD	2012	191,977,807,039	350	698,775,000	274.735	1.2740
	2013	237,707,561,355	390	698,775,000	340.178	1.1465
	2014	267,906,054,012	515	698,775,000	383.394	1.3433
	2015	291,961,416,611	400	698,775,000	417.819	0.9574
	2016	592,004,807,725	590	698,775,000	847.204	0.6964
GGRM	2012	26,605,713,000,000	56,300	1,924,088,000	13,827.701	4.0715
	2013	29,416,271,000,000	42,000	1,924,088,000	15,288.423	2.7472
	2014	33,000,157,000,000	60,700	1,924,088,000	17,151.064	3.5391

	2015	38,007,909,000,000	55,000	1,924,088,000	19,753.727	2.7843
	2016	39,564,228,000,000	63,900	1,924,088,000	20,562.588	3.1076
ICBP	2012	11,984,361,000,000	7,800	5,830,954,000	2,055.300	3.7951
	2013	12,789,017,000,000	10,200	5,830,954,000	2,193.298	4.6505
	2014	14,584,301,000,000	13,100	5,830,954,000	2,501.186	5.2375
	2015	16,386,911,000,000	13,475	5,830,954,000	2,810.331	4.7948
	2016	18,500,823,000,000	8,575	11,661,908,000	1,586.432	5.4052
IGAR	2012	242,028,852,241	375	1,050,000,000	230.504	1.6269
	2013	225,742,774,790	295	972,204,500	232.197	1.2705
	2014	257,674,022,610	315	972,204,500	265.041	1.1885
	2015	310,464,258,463	224	972,204,500	319.340	0.7014
	2016	373,749,035,530	520	972,204,500	384.435	1.3526
INAI	2012	129,218,262,395	450	158,400,000	815.772	0.5516
	2013	126,317,803,126	600	158,400,000	797.461	0.7524
	2014	121,742,186,500	350	316,800,000	384.287	0.9108
	2015	239,820,902,657	405	316,800,000	757.010	0.5350
	2016	258,016,602,673	645	316,800,000	814.446	0.7919
INCI	2012	115,759,878,140	245	181,035,556	639.432	0.3832
	2013	126,091,686,236	240	181,035,556	696.502	0.3446
	2014	136,427,394,601	238	181,035,556	753.594	0.3158
	2015	154,051,308,997	305	181,035,556	850.945	0.3584
	2016	242,826,462,751	306	181,035,556	1,341.319	0.2281
INDF	2012	34,140,237,000,000	5,850	8,780,426,500	3,888.221	1.5045
	2013	38,373,129,000,000	6,600	8,780,426,500	4,370.304	1.5102
	2014	40,274,198,000,000	6,750	8,780,426,500	4,586.816	1.4716
	2015	43,121,593,000,000	5,175	8,780,426,500	4,911.105	1.0537
	2016	43,941,423,000,000	7,925	8,780,426,500	5,004.475	1.5836
INDS	2012	1,136,572,861,829	4,200	315,000,000	3,608.168	1.1640
	2013	1,752,865,614,508	2,675	525,000,000	3,338.792	0.8012
	2014	1,822,667,471,833	1,600	656,249,710	2,777.399	0.5761
	2015	1,919,038,917,988	350	656,249,710	2,924.251	0.1197
	2016	2,068,063,877,631	810	656,249,710	3,151.337	0.2570
INTP	2012	19,418,738,000,000	22,450	3,681,231,699	5,275.065	4.2559
	2013	22,758,217,000,000	20,000	3,681,231,699	6,182.229	3.2351
	2014	24,577,013,000,000	25,000	3,681,231,699	6,676.302	3.7446
	2015	23,865,950,000,000	22,325	3,681,231,699	6,483.143	3.4435
	2016	26,138,703,000,000	15,400	3,681,231,699	7,100.532	2.1689
JECC	2012	142,875,793,000	1,900	151,200,000	944.946	2.0107
	2013	147,660,344,000	2,850	151,200,000	976.590	2.9183
	2014	166,393,719,000	2,350	151,200,000	1,100.488	2.1354
	2015	367,756,259,000	1,350	151,200,000	2,432.250	0.5550

	2016	470,338,342,000	3,500	151,200,000	3,110.703	1.1251
JPFA	2012	4,763,327,000,000	6,150	2,132,104,582	2,234.096	2.7528
	2013	5,245,222,000,000	1,220	10,660,522,910	492.023	2.4796
	2014	5,179,545,000,000	950	10,660,522,910	485.862	1.9553
	2015	6,109,692,000,000	635	10,660,522,910	573.114	1.1080
	2016	9,372,964,000,000	1,455	11,410,522,910	821.432	1.7713
KAEF	2012	1,441,533,689,666	740	5,554,000,000	259.549	2.8511
	2013	1,624,354,688,981	590	5,554,000,000	292.466	2.0173
	2014	1,721,078,859,509	1,465	5,554,000,000	309.881	4.7276
	2015	1,862,096,822,470	870	5,554,000,000	335.271	2.5949
	2016	2,271,497,409,194	2,750	5,554,000,000	408.984	6.7240
KBLF	2012	7,371,643,614,897	1,060	50,780,072,110	145.168	7.3019
	2013	8,499,957,965,575	1,250	46,875,122,110	181.332	6.8934
	2014	9,764,101,018,423	1,830	46,875,122,110	208.300	8.7854
	2015	10,938,285,985,269	1,320	46,875,122,110	233.349	5.6568
	2016	12,463,847,141,085	1,515	46,875,122,110	265.895	5.6977
KBLI	2012	845,141,024,021	187	4,007,235,107	210.904	0.8867
	2013	886,649,700,731	142	4,007,235,107	221.262	0.6418
	2014	926,637,603,251	139	4,007,235,107	231.241	0.6011
	2015	1,027,361,931,042	119	4,007,235,107	256.377	0.4642
	2016	1,321,345,840,449	276	4,007,235,107	329.740	0.8370
KBLM	2012	264,746,064,454	135	1,120,000,000	236.380	0.5711
	2013	269,664,159,813	158	1,120,000,000	240.772	0.6562
	2014	647,249,655,440	155	1,120,000,000	577.901	0.2682
	2015	296,475,380,006	132	1,120,000,000	264.710	0.4987
	2016	320,655,277,264	240	1,120,000,000	286.299	0.8383
KDSI	2012	316,006,115,379	495	405,000,000	780.262	0.6344
	2013	352,008,887,573	345	405,000,000	869.158	0.3969
	2014	372,032,694,424	364	405,000,000	918.599	0.3963
	2015	378,921,289,074	191	405,000,000	935.608	0.2041
	2016	419,784,286,104	350	405,000,000	1,036.504	0.3377
LION	2012	371,829,387,027	10,400	52,016,000	7,148.366	1.4549
	2013	415,784,337,843	12,000	52,016,000	7,993.393	1.5012
	2014	425,933,669,395	9,300	52,016,000	8,188.513	1.1357
	2015	454,599,496,171	1,050	52,016,000	8,739.609	0.1201
	2016	470,603,093,171	1,050	52,016,000	9,047.276	0.1161
LMSH	2012	97,525,195,182	10,500	9,600,000	10,158.874	1.0336
	2013	110,468,094,376	8,000	9,600,000	11,507.093	0.6952
	2014	112,593,050,691	6,450	9,600,000	11,728.443	0.5499
	2015	112,441,377,144	575	9,600,000	11,712.643	0.0491
	2016	117,316,469,122	590	9,600,000	12,220.466	0.0483

MERK	2012	416,741,865,000	152,000	22,400,000	18,604.548	8.1700
	2013	512,218,622,000	189,000	22,400,000	22,866.903	8.2652
	2014	544,244,319,000	160,000	22,400,000	24,296.621	6.5853
	2015	473,543,282,000	6,775	448,000,000	1,057.016	6.4096
	2016	582,672,469,000	9,200	448,000,000	1,300.608	7.0736
MLBI	2012	329,853,000,000	740,000	21,070,000	15,655.102	47.2689
	2013	987,533,000,000	1,200,000	21,070,000	46,869.150	25.6032
	2014	553,797,000,000	11,950	21,070,000	26,283.673	0.4547
	2015	766,480,000,000	8,200	21,070,000	36,377.788	0.2254
	2016	820,640,000,000	11,750	21,070,000	38,948.268	0.3017
MYOR	2012	3,067,850,327,238	20,000	766,584,000	4,001.975	4.9975
	2013	3,938,760,819,650	26,000	894,347,989	4,404.058	5.9036
	2014	4,077,036,284,827	20,900	894,347,989	4,558.669	4.5847
	2015	5,194,459,927,187	30,500	894,347,989	5,808.097	5.2513
	2016	6,265,255,987,065	1,645	22,358,699,725	280.216	5.8705
NIPS	2012	202,073,660,000	4,100	20,000,000	10,103.683	0.4058
	2013	235,945,772,000	325	720,000,000	327.702	0.9918
	2014	582,222,106,000	487	1,486,666,666	391.629	1.2435
	2015	609,002,679,000	425	1,486,666,666	409.643	1.0375
	2016	842,580,894,000	354	1,635,333,332	515.235	0.6871
PYFA	2012	87,705,472,878	117	535,080,000	163.911	0.7138
	2013	94,112,175,387	147	535,080,000	175.884	0.8358
	2014	97,096,611,306	135	535,080,000	181.462	0.7440
	2015	101,222,059,197	112	535,080,000	189.172	0.5921
	2016	105,508,790,427	200	535,080,000	197.183	1.0143
RICY	2012	366,957,389,624	174	641,717,510	571.836	0.3043
	2013	372,002,989,683	174	641,717,510	579.699	0.3002
	2014	390,263,218,936	174	641,717,510	608.154	0.2861
	2015	400,079,043,512	159	641,717,510	623.450	0.2550
	2016	412,499,070,065	154	641,717,510	642.805	0.2396
ROTI	2012	666,607,597,550	6,900	1,012,360,000	658.469	10.4789
	2013	787,337,649,671	1,020	5,061,800,000	155.545	6.5576
	2014	960,122,354,744	1,385	5,061,800,000	189.680	7.3018
	2015	1,188,534,951,872	1,265	5,061,800,000	234.805	5.3875
	2016	1,442,751,772,026	1,600	5,061,800,000	285.027	5.6135
SCCO	2012	654,044,664,731	4,050	205,583,400	3,181.408	1.2730
	2013	707,611,129,154	4,400	205,583,400	3,441.966	1.2783
	2014	809,954,326,656	3,950	205,583,400	3,939.785	1.0026
	2015	922,352,503,822	3,725	205,583,400	4,486.513	0.8303
	2016	1,220,420,673,224	7,275	205,583,400	5,936.378	1.2255
SKLT	2012	129,482,560,948	180	690,740,500	187.455	0.9602

	2013	139,650,353,636	180	690,740,500	202.175	0.8903
	2014	153,368,106,620	300	690,740,500	222.034	1.3511
	2015	152,044,668,111	370	690,740,500	220.118	1.6809
	2016	296,151,295,872	308	690,740,500	428.745	0.7184
SMGR	2012	18,164,854,648,000	15,850	5,931,520,000	3,062.428	5.1756
	2013	21,803,975,875,000	14,150	5,931,520,000	3,675.951	3.8493
	2014	25,004,930,004,000	16,200	5,931,520,000	4,215.602	3.8429
	2015	27,440,798,401,000	11,400	5,931,520,000	4,626.268	2.4642
	2016	30,574,391,457,000	9,175	5,931,520,000	5,154.563	1.7800
SMSM	2012	820,328,000,000	2,525	1,439,668,860	569.803	4.4314
	2013	1,001,310,000,000	3,450	1,439,668,860	695.514	4.9604
	2014	1,122,120,000,000	4,750	1,439,668,860	779.429	6.0942
	2015	1,440,248,000,000	4,760	1,439,668,860	1,000.402	4.7581
	2016	2,220,108,000,000	980	5,758,675,440	385.524	2.5420
SRSN	2012	269,204,143,000	50	6,020,000,000	44.718	1.1181
	2013	314,375,634,000	50	6,020,000,000	52.222	0.9575
	2014	324,030,213,000	50	6,020,000,000	53.826	0.9289
	2015	340,079,836,000	50	6,020,000,000	56.492	0.8851
	2016	402,053,633,000	50	6,020,000,000	66.786	0.7487
	2012	579,691,340,310	1,050	1,310,000,000	442.512	2.3728
STTP	2013	694,128,409,113	1,550	1,310,000,000	529.869	2.9253
	2014	815,510,869,260	2,880	1,310,000,000	622.527	4.6263
	2015	1,008,809,438,257	3,015	1,310,000,000	770.084	3.9152
	2016	1,168,512,137,670	3,190	1,310,000,000	891.994	3.5763
TCID	2012	1,096,821,575,914	11,000	201,066,667	5,455.014	2.0165
	2013	1,182,990,689,957	11,900	201,066,667	5,883.574	2.0226
	2014	1,283,504,442,268	17,525	201,066,667	6,383.477	2.7454
	2015	1,714,871,478,033	16,500	201,066,667	8,528.870	1.9346
	2016	1,783,158,507,325	12,500	201,066,667	8,868.494	1.4095
TOTO	2012	898,164,900,513	6,650	495,360,000	1,813.156	3.6676
	2013	1,035,650,413,675	7,700	495,360,000	2,090.703	3.6830
	2014	1,125,897,630,494	3,975	990,720,000	1,136.444	3.4978
	2015	1,491,542,919,106	6,950	1,032,000,000	1,445.294	4.8087
	2016	1,523,874,519,542	498	1,032,000,000	1,476.623	0.3373
TRIS	2012	242,556,471,149	340	1,000,000,000	242.556	1.4017
	2013	282,306,467,893	400	1,002,598,000	281.575	1.4206
	2014	308,551,077,438	356	1,043,763,025	295.614	1.2043
	2015	329,208,076,905	300	1,045,446,325	314.897	0.9527
	2016	346,627,180,477	336	1,045,446,325	331.559	1.0134
TRST	2012	1,352,992,459,388	345	2,808,000,000	481.835	0.7160
	2013	1,707,075,047,626	250	2,808,000,000	607.933	0.4112

	2014	1,756,440,396,879	380	2,808,000,000	625.513	0.6075
	2015	1,956,920,690,054	310	2,808,000,000	696.909	0.4448
	2016	1,932,355,184,014	300	2,808,000,000	688.161	0.4359
TSPC	2012	3,353,156,079,810	3,725	4,500,000,000	745.146	4.9990
	2013	3,862,951,854,240	3,250	4,500,000,000	858.434	3.7860
	2014	4,082,127,697,809	2,865	4,500,000,000	907.139	3.1583
	2015	4,337,140,975,120	1,750	4,500,000,000	963.809	1.8157
	2016	4,635,273,142,692	1,970	4,500,000,000	1,030.061	1.9125
ULTJ	2012	1,676,519,113,422	1,330	2,888,382,000	580.435	2.2914
	2013	2,015,146,534,086	4,500	2,888,382,000	697.673	6.4500
	2014	2,273,306,156,418	3,720	2,888,382,000	787.052	4.7265
	2015	2,797,505,693,922	3,945	2,888,382,000	968.537	4.0732
	2016	3,489,233,494,783	4,570	2,888,382,000	1,208.024	3.7830
UNIT	2012	240,425,406,576	345	75,422,200	3,187.727	0.1082
	2013	241,257,262,302	250	75,422,200	3,198.757	0.0782
	2014	242,242,496,901	318	75,422,200	3,211.820	0.0990
	2015	242,974,314,739	260	75,422,200	3,221.523	0.0807
	2016	244,021,820,832	360	75,422,200	3,235.411	0.1113
UNVR	2012	3,968,365,000,000	20,850	7,630,000,000	520.100	40.0884
	2013	4,254,670,000,000	26,000	7,630,000,000	557.624	46.6264
	2014	4,746,514,000,000	32,300	7,630,000,000	622.086	51.9221
	2015	4,827,360,000,000	37,000	7,630,000,000	632.682	58.4812
	2016	4,704,258,000,000	38,800	7,630,000,000	616.548	62.9311

LAMPIRAN 5

DATA LAPORAN KEUANGAN PERUSAHAAN PROFITABILITAS (ROE)

PERUSAHAAN	TAHUN	PENERIMAAN SETELAH PAJAK	TOTAL EKUITAS	ROE
AISA	2012	253,664	2,033,453	0.1247454
	2013	346,728	2,356,773	0.1471198
	2014	377,903	3,585,936	0.1053848
	2015	373,750	3,966,907	0.0942170
	2016	719,228	4,264,400	0.1686587
AKPI	2012	31,115,755	843,266,716	0.0368991
	2013	34,620,336	1,029,336,226	0.0336337
	2014	34,659,623	1,031,605,289	0.0335978
	2015	27,644,714	1,107,565,893	0.0249599
	2016	52,393,857	1,120,035,169	0.0467788
ALDO	2012	13,327,139,458	107,536,357,440	0.1239315
	2013	22,589,101,552	139,883,299,162	0.1614853
	2014	21,070,935,796	148,803,798,920	0.1416021
	2015	24,079,122,338	170,929,026,813	0.1408720
	2016	25,229,505,223	200,887,900,422	0.1255900
AMFG	2012	346,609	2,457,049	0.1410672
	2013	338,358	2,760,727	0.1225612
	2014	464,152	3,101,440	0.1496569
	2015	341,346	3,390,223	0.1006854
	2016	260,444	3,599,264	0.0723603
APLI	2012	4,203,700,813	218,635,793,389	0.0192270
	2013	1,881,586,263	217,723,188,925	0.0086421
	2014	9,691,077,439	224,572,991,214	0.0431534
	2015	1,854,274,736	221,561,080,751	0.0083691
	2016	25,109,482,194	246,501,444,451	0.1018634
ARNA	2012	158,684,349,130	604,808,179,406	0.2623714
	2013	237,697,913,883	768,489,883,529	0.3093052
	2014	261,879,784,046	909,942,258,556	0.2877982
	2015	71,209,943,348	894,728,477,056	0.0795883
	2016	91,375,910,975	948,088,201,259	0.0963791
ASII	2012	22,742	89,814	0.2532122
	2013	22,297	106,188	0.2099766
	2014	22,131	120,187	0.1841381
	2015	15,613	126,533	0.1233907
	2016	18,302	139,906	0.1308164
AUTO	2012	1,135,914	5,485,099	0.2070909

	2013	1,058,015	9,558,754	0.1106855
	2014	954,086	10,142,706	0.0940662
	2015	322,701	10,143,426	0.0318138
	2016	483,421	10,536,558	0.0458804
BUDI	2012	5,084	854,135	0.0059522
	2013	42,886	885,121	0.0484521
	2014	28,524	908,931	0.0313819
	2015	21,072	1,105,251	0.0190654
	2016	38,624	1,164,982	0.0331542
CPIN	2012	2,680,872	8,176,464	0.3278767
	2013	2,528,690	9,950,900	0.2541167
	2014	1,745,724	11,005,218	0.1586269
	2015	1,832,598	12,561,427	0.1458909
	2016	2,251,813	14,157,243	0.1590573
DLTA	2012	213,421,077	598,211,513	0.3567652
	2013	270,498,062	676,557,993	0.3998150
	2014	288,499,375	760,396,104	0.3794067
	2015	192,045,199	849,621,481	0.2260362
	2016	254,509,268	1,012,374,008	0.2513985
DPNS	2012	20,608,530,035	155,593,301,345	0.1324513
	2013	66,813,230,321	223,427,964,789	0.2990370
	2014	14,528,830,097	236,041,363,276	0.0615521
	2015	9,859,176,172	241,296,079,044	0.0408592
	2016	10,009,391,103	263,264,403,585	0.0380203
DVLA	2012	148,909,089	841,546,479	0.1769470
	2013	125,796,473	914,702,952	0.1375271
	2014	81,597,761	947,454,725	0.0861231
	2015	107,894,430	973,517,334	0.1108295
	2016	152,083,400	1,079,579,612	0.1408728
EKAD	2012	36,197,747,370	191,977,807,039	0.1885517
	2013	39,450,652,821	237,707,561,355	0.1659630
	2014	40,985,863,205	267,906,054,012	0.1529860
	2015	47,040,256,456	291,961,416,611	0.1611181
	2016	90,685,821,530	592,004,807,725	0.1531843
GGRM	2012	4,068,711	26,605,713	0.1529262
	2013	4,383,932	29,416,271	0.1490309
	2014	5,432,667	33,000,157	0.1646255
	2015	6,452,834	38,007,909	0.1697761
	2016	6,672,628	39,564,228	0.1686531
ICBP	2012	2,282,371	11,984,361	0.1904458
	2013	2,235,040	12,789,017	0.1747625

	2014	2,574,172	14,584,301	0.1765029
	2015	2,923,148	16,386,911	0.1783831
	2016	3,631,301	18,500,823	0.1962778
IGAR	2012	44,507,701,367	242,028,852,241	0.1838942
	2013	35,030,416,158	225,742,774,790	0.1551785
	2014	55,155,278,768	257,674,022,610	0.2140506
	2015	51,416,184,307	310,464,258,463	0.1656106
	2016	69,305,629,795	373,749,035,530	0.1854336
INAI	2012	23,155,488,541	129,218,262,395	0.1791967
	2013	5,019,540,731	126,317,803,126	0.0397374
	2014	22,415,476,342	121,742,186,500	0.1841225
	2015	28,615,673,167	239,820,902,657	0.1193210
	2016	35,552,975,244	258,016,602,673	0.1377934
INCI	2012	4,443,840,864	115,759,878,140	0.0383884
	2013	10,331,808,096	126,091,686,236	0.0819389
	2014	11,056,884,369	136,427,394,601	0.0810459
	2015	16,960,660,023	154,051,308,997	0.1100975
	2016	9,988,836,259	242,826,462,751	0.0411357
INDF	2012	4,779,446	34,140,237	0.1399945
	2013	3,416,635	38,373,129	0.0890372
	2014	5,229,489	40,274,198	0.1298471
	2015	3,709,501	43,121,593	0.0860242
	2016	5,266,906	43,941,423	0.1198620
INDS	2012	134,068,283,255	1,136,572,861,829	0.1179584
	2013	147,608,449,013	1,752,865,614,508	0.0842098
	2014	127,819,512,585	1,822,667,471,833	0.0701277
	2015	1,933,819,152	1,919,038,917,988	0.0010077
	2016	49,556,367,334	2,068,063,877,631	0.0239627
INTP	2012	4,763,388	19,418,738	0.2452985
	2013	5,012,294	22,758,217	0.2202411
	2014	5,293,416	24,577,013	0.2153808
	2015	4,356,661	23,865,950	0.1825471
	2016	3,870,319	26,138,703	0.1480685
JECC	2012	31,770,770	142,875,793	0.2223664
	2013	22,553,551	147,660,344	0.1527394
	2014	23,904,334	166,393,719	0.1436613
	2015	2,464,669	367,756,259	0.0067019
	2016	132,423,161	470,338,342	0.2815487
JPFA	2012	1,074,577	4,763,327	0.2255938
	2013	640,637	5,245,222	0.1221373
	2014	391,866	5,179,545	0.0756565

	2015	524,484	6,109,692	0.0858446
	2016	2,171,608	9,372,964	0.2316885
KAEF	2012	205,763,997,378	1,441,533,689,666	0.1427396
	2013	215,642,329,977	1,624,354,688,981	0.1327557
	2014	257,836,015,297	1,721,078,859,509	0.1498107
	2015	252,972,506,074	1,862,096,822,470	0.1358536
	2016	271,597,947,663	2,271,497,409,194	0.1195678
KBLF	2012	1,775,098,847,932	7,371,643,614,897	0.2408010
	2013	1,970,452,449,686	8,499,957,965,575	0.2318191
	2014	2,122,677,647,816	9,764,101,018,423	0.2173961
	2015	2,057,694,281,873	10,938,285,985,269	0.1881185
	2016	2,350,884,933,551	12,463,847,141,085	0.1886163
KBLI	2012	125,181,635,828	845,141,024,021	0.1481192
	2013	73,530,280,777	886,649,700,731	0.0829305
	2014	72,026,856,790	926,637,603,251	0.0777293
	2015	115,371,098,970	1,027,361,931,042	0.1122984
	2016	334,338,838,592	1,321,345,840,449	0.2530290
KBLM	2012	23,833,078,478	264,746,064,454	0.0900224
	2013	7,678,095,359	269,664,159,813	0.0284728
	2014	20,498,841,379	647,249,655,440	0.0316707
	2015	12,760,365,612	296,475,380,006	0.0430402
	2016	21,245,022,916	320,655,277,264	0.0662550
KDSI	2012	36,837,060,793	316,006,115,379	0.1165707
	2013	36,002,772,194	352,008,887,573	0.1022780
	2014	45,687,373,251	372,032,694,424	0.1228047
	2015	11,470,563,293	378,921,289,074	0.0302716
	2016	47,127,349,067	419,784,286,104	0.1122656
LION	2012	85,373,721,654	371,829,387,027	0.2296046
	2013	64,761,350,816	415,784,337,843	0.1557571
	2014	48,712,977,670	425,933,669,395	0.1143675
	2015	46,018,637,487	454,599,496,171	0.1012290
	2016	42,345,417,055	470,603,093,171	0.0899812
LMSH	2012	41,282,515,026	97,525,195,182	0.4233010
	2013	14,382,899,194	110,468,094,376	0.1301996
	2014	7,605,091,176	112,593,050,691	0.0675449
	2015	1,944,443,395	112,441,377,144	0.0172930
	2016	6,252,814,811	117,316,469,122	0.0532987
MERK	2012	107,808,155	416,741,865	0.2586929
	2013	175,444,757	512,218,622	0.3425193
	2014	182,147,224	544,244,319	0.3346791

	2015	142,545,462	473,543,282	0.3010189
	2016	153,842,847	582,672,469	0.2640297
MLBI	2012	453,405	329,853	1.3745669
	2013	1,171,229	987,533	1.1860150
	2014	794,883	553,797	1.4353328
	2015	496,909	766,480	0.6483000
	2016	982,129	820,640	1.1967842
MYOR	2012	744,428,404,309	3,067,850,327,238	0.2426547
	2013	1,058,418,939,252	3,938,760,819,650	0.2687188
	2014	409,618,689,484	4,077,036,284,827	0.1004697
	2015	1,250,233,128,560	5,194,459,927,187	0.2406859
	2016	1,388,676,127,665	6,265,255,987,065	0.2216471
NIPS	2012	21,610,141	202,073,660	0.1069419
	2013	33,872,112	235,945,772	0.1435589
	2014	49,741,721	582,222,106	0.0854343
	2015	30,671,339	609,002,679	0.0503632
	2016	65,683,137	842,580,894	0.0779547
PYFA	2012	5,308,221,363	87,705,472,878	0.0605233
	2013	6,195,800,338	94,112,175,387	0.0658342
	2014	2,661,022,001	97,096,611,306	0.0274059
	2015	3,087,104,465	101,222,059,197	0.0304983
	2016	5,146,317,041	105,508,790,427	0.0487762
RICY	2012	5,256,556,182	366,957,389,624	0.0143247
	2013	4,840,205,736	372,002,989,683	0.0130112
	2014	15,124,699,961	390,263,218,936	0.0387551
	2015	13,465,713,464	400,079,043,512	0.0336576
	2016	14,033,426,519	412,499,070,065	0.0340205
ROTI	2012	149,149,548,025	666,607,597,550	0.2237441
	2013	158,015,270,921	787,337,649,671	0.2006957
	2014	188,577,521,074	960,122,354,744	0.1964099
	2015	270,538,700,440	1,188,534,951,872	0.2276237
	2016	279,777,368,831	1,442,751,772,026	0.1939193
SCCO	2012	169,741,648,691	654,044,664,731	0.2595261
	2013	104,962,314,423	707,611,129,154	0.1483333
	2014	137,618,900,727	809,954,326,656	0.1699095
	2015	159,119,646,125	922,352,503,822	0.1725150
	2016	340,593,630,534	1,220,420,673,224	0.2790789
SKLT	2012	7,962,693,771	129,482,560,948	0.0614963
	2013	11,440,014,188	139,650,353,636	0.0819190
	2014	16,480,714,984	153,368,106,620	0.1074586
	2015	20,066,791,849	152,044,668,111	0.1319796

	2016	20,646,121,074	296,151,295,872	0.0697148
SMGR	2012	4,926,639,847	18,164,854,648	0.2712182
	2013	5,354,298,521	21,803,975,875	0.2455652
	2014	5,567,659,839	25,004,930,004	0.2226625
	2015	4,525,441,038	27,440,798,401	0.1649165
	2016	4,535,036,823	30,574,391,457	0.1483280
SMSM	2012	268,543	820,328	0.3273605
	2013	350,777	1,001,310	0.3503181
	2014	422,126	1,122,120	0.3761861
	2015	461,307	1,440,248	0.3202969
	2016	502,192	2,220,108	0.2262016
SRSN	2012	16,956,040	269,204,143	0.0629858
	2013	15,994,295	314,375,634	0.0508764
	2014	14,600,316	324,030,213	0.0450585
	2015	15,504,788	340,079,836	0.0455916
	2016	11,056,051	402,053,633	0.0274989
	2012	74,626,183,474	579,691,340,310	0.1287343
STTP	2013	114,437,068,803	694,128,409,113	0.1648644
	2014	123,635,526,965	815,510,869,260	0.1516050
	2015	185,705,201,171	1,008,809,438,257	0.1840835
	2016	174,176,717,866	1,168,512,137,670	0.1490585
TCID	2012	15037385196	1,096,821,575,914	0.0137100
	2013	160,148,465,833	1,182,990,689,957	0.1353759
	2014	174,314,394,101	1,283,504,442,268	0.1358113
	2015	544,474,278,014	1,714,871,478,033	0.3175015
	2016	162,059,596,347	1,783,158,507,325	0.0908834
TOTO	2012	235,945,643,357	898,164,900,513	0.2626975
	2013	236,557,513,162	1,035,650,413,675	0.2284144
	2014	295,861,032,723	1,125,897,630,494	0.2627779
	2015	285,236,780,659	1,491,542,919,106	0.1912361
	2016	168,564,583,718	1,523,874,519,542	0.1106158
TRIS	2012	44,393,034,558	242,556,471,149	0.1830214
	2013	48,195,237,468	282,306,467,893	0.1707196
	2014	36,522,815,125	308,551,077,438	0.1183688
	2015	37,448,445,764	329,208,076,905	0.1137531
	2016	25,213,015,324	346,627,180,477	0.0727381
TRST	2012	61,453,058,755	1,352,992,459,388	0.0454201
	2013	32,965,552,359	1,707,075,047,626	0.0193111
	2014	30,256,039,162	1,756,440,396,879	0.0172258
	2015	25,314,103,403	1,956,920,690,054	0.0129357
	2016	33,794,866,940	1,932,355,184,014	0.0174890

TSPC	2012	635,176,093,653	3,353,156,079,810	0.1894263
	2013	638,535,108,795	3,862,951,854,240	0.1652972
	2014	585,790,816,012	4,082,127,697,809	0.1435013
	2015	529,218,651,807	4,337,140,975,120	0.1220202
	2016	545,493,536,262	4,635,273,142,692	0.1176831
ULTJ	2012	353,431,619,485	1,676,519,113,422	0.2108128
	2013	325,127,420,664	2,015,146,534,086	0.1613418
	2014	283,061,430,451	2,273,306,156,418	0.1245153
	2015	523,100,215,029	2,797,505,693,922	0.1869881
	2016	709,825,635,742	3,489,233,494,783	0.2034331
UNIT	2012	352,726,678	240,425,406,576	0.0014671
	2013	831,855,726	241,257,262,302	0.0034480
	2014	352,883,734	242,242,496,901	0.0014567
	2015	385,953,128	242,974,314,739	0.0015885
	2016	860,775,733	244,021,820,832	0.0035275
UNVR	2012	4,839,145	3,968,365	1.2194304
	2013	5,352,625	4,254,670	1.2580588
	2014	5,926,720	4,746,514	1.2486469
	2015	5,851,805	4,827,360	1.2122164
	2016	6,390,672	4,704,258	1.3584867

LAMPIRAN 6

DATA LAPORAN KEUANGAN PERUSAHAAN PERUSAHAAN
LIKUIDITAS (CR)

PERUSAHAAN	TAHUN	aset lancar	hutang lancar	CR
AISA	2012	1,544,940	1,216,997	1.2694690
	2013	2,445,504	1,397,224	1.7502591
	2014	3,977,086	1,493,308	2.6632724
	2015	4,463,635	2,750,456	1.6228709
	2016	5,949,164	2,504,330	2.3755511
AKPI	2012	792,097,723	563,998,914	1.4044313
	2013	943,606,169	694,269,154	1.3591360
	2014	920,128,174	812,876,508	1.1319409
	2015	1,015,820,277	985,625,515	1.0306351
	2016	870,146,141	770,887,902	1.1287583
ALDO	2012	133,060,260,045	102,348,279,288	1.3000732
	2013	195,585,658,856	150,482,940,928	1.2997198
	2014	240,651,118,780	184,602,687,438	1.3036166
	2015	247,659,994,988	184,214,469,035	1.3444112
	2016	298,258,060,232	201,756,667,857	1.4783058
AMFG	2012	1,658,468	426,669	3.8870131
	2013	1,980,116	473,960	4.1778125
	2014	2,263,728	398,238	5.6843596
	2015	2,231,181	479,376	4.6543444
	2016	1,787,723	885,086	2.0198297
APLI	2012	140,079,343,003	97,499,476,226	1.4367189
	2013	126,905,701,667	68,941,583,137	1.8407715
	2014	89,509,388,915	31,090,308,805	2.8790125
	2015	81,119,626,942	68,835,516,891	1.1784560
	2016	71,131,579,000	47,573,871,564	1.4951816
ARNA	2012	323,837,015,729	277,678,054,056	1.1662319
	2013	405,105,632,599	311,780,561,616	1.2993293
	2014	507,458,459,958	315,672,948,473	1.6075450
	2015	509,178,006,986	498,857,920,866	1.0206874
	2016	642,892,045,913	476,631,150,852	1.3488251
ASII	2012	75,799	54,178	1.3990734
	2013	88,352	71,139	1.2419629
	2014	97,241	74,241	1.3098019
	2015	105,161	76,242	1.3793054
	2016	110,403	89,079	1.2393830

AUTO	2012	3,205,631	2,751,766	1.1649359
	2013	5,029,517	2,661,312	1.8898637
	2014	5,138,080	3,857,809	1.3318648
	2015	4,796,770	3,625,907	1.3229159
	2016	4,903,902	3,258,146	1.5051204
BUDI	2012	1,010,594	907,065	1.1141363
	2013	1,094,079	1,016,562	1.0762541
	2014	988,526	945,117	1.0459298
	2015	1,492,365	1,491,109	1.0008423
	2016	1,092,360	1,090,816	1.0014155
CPIN	2012	7,180,890	2,167,652	3.3127504
	2013	8,824,900	2,327,048	3.7923154
	2014	10,009,670	4,467,242	2.2406823
	2015	12,013,294	5,703,842	2.1061758
	2016	12,059,433	5,550,257	2.1727702
DLTA	2012	631,333,221	119,919,552	5.2646396
	2013	748,111,003	158,990,741	4.7053747
	2014	858,313,129	195,089,619	4.3995838
	2015	902,006,833	140,419,495	6.4236581
	2016	1,048,133,697	137,842,096	7.6038723
DPNS	2012	107,455,824,614	12,506,012,328	8.5923332
	2013	167,103,003,126	16,424,251,535	10.1741624
	2014	183,045,202,210	14,384,941,579	12.7247790
	2015	185,099,466,179	13,865,122,841	13.3500055
	2016	174,907,377,454	11,533,925,524	15.1646009
DVLA	2012	826,342,540	191,717,606	4.3102069
	2013	913,983,962	215,473,310	4.2417502
	2014	925,293,721	188,297,347	4.9140030
	2015	1,043,830,034	296,298,118	3.5229047
	2016	1,068,967,094	374,427,510	2.8549374
EKAD	2012	180,370,886,413	74,814,329,851	2.4109136
	2013	229,041,255,054	98,355,431,960	2.3287098
	2014	296,439,331,922	127,248,837,925	2.3296035
	2015	284,055,202,739	79,594,446,891	3.5687817
	2016	337,644,083,636	69,110,450,442	4.8855720
GGRM	2012	29,954,021	13,802,317	2.1702169
	2013	34,604,461	20,094,580	1.7220793
	2014	38,532,600	23,783,134	1.6201649
	2015	42,568,431	24,045,086	1.7703589
	2016	41,933,173	21,638,565	1.9378907
ICBP	2012	9,922,662	3,648,069	2.7199765

	2013	11,321,715	4,696,583	2.4106281
	2014	13,621,918	6,208,146	2.1942007
	2015	13,961,500	6,002,344	2.3260080
	2016	15,571,362	6,469,785	2.4067820
IGAR	2012	265,069,749,187	60,746,702,955	4.3635249
	2013	262,716,285,534	77,516,948,155	3.3891464
	2014	302,146,092,589	73,319,694,813	4.1209404
	2015	309,534,956,646	62,393,966,974	4.9609757
	2016	363,004,314,204	62,350,881,953	5.8219596
INAI	2012	428,198,233,994	214,820,869,351	1.9932804
	2013	543,234,334,813	439,441,122,554	1.2361937
	2014	644,378,101,805	595,335,758,497	1.0823776
	2015	955,465,955,552	952,130,242,797	1.0035034
	2016	974,282,450,341	971,422,099,001	1.0029445
INCI	2012	96,740,984,835	12,546,019,891	7.7108904
	2013	84,716,525,404	6,107,335,794	13.8712735
	2014	86,975,126,294	6,761,434,983	12.8634124
	2015	107,268,622,816	11,084,537,386	9.6773207
	2016	118,743,367,562	20,420,038,273	5.8150414
INDF	2012	26,235,990	12,805,200	2.0488544
	2013	32,464,497	19,471,309	1.6672992
	2014	41,014,127	22,628,835	1.8124719
	2015	42,816,745	25,107,538	1.7053343
	2016	28,985,443	19,219,441	1.5081314
INDS	2012	877,635,915,018	371,743,866,089	2.3608619
	2013	1,086,590,779,051	281,799,219,289	3.8559041
	2014	975,954,232,621	335,123,443,361	2.9122231
	2015	992,929,224,058	445,006,853,182	2.2312673
	2016	981,694,103,645	323,699,362,103	3.0327341
INTP	2012	14,579,400	2,418,762	6.0276290
	2013	16,846,777	2,740,089	6.1482591
	2014	16,087,370	3,260,559	4.9339300
	2015	13,133,854	2,687,743	4.8865736
	2016	14,424,622	3,187,742	4.5250281
JECC	2012	614,693,235	531,671,545	1.1561522
	2013	1,029,276,933	1,052,583,258	0.9778580
	2014	873,185,261	846,116,408	1.0319919
	2015	927,492,569	883,284,008	1.0500502
	2016	1,131,735,197	992,544,784	1.1402359
JPFA	2012	6,429,500	3,523,891	1.8245457
	2013	9,004,667	4,361,546	2.0645585

	2014	8,709,318	4,916,448	1.7714655
	2015	9,604,154	5,352,670	1.7942735
	2016	11,061,008	5,352,670	2.0664468
KAEF	2012	1,505,798,399,164	537,184,235,226	2.8031321
	2013	1,810,614,614,537	746,123,148,554	2.4266967
	2014	2,040,430,857,906	854,811,681,426	2.3869946
	2015	2,100,921,793,619	1,088,431,346,892	1.9302290
	2016	2,906,737,458,288	1,696,208,867,581	1.7136672
KBLF	2012	6,441,710,544,081	1,891,617,853,724	3.4053974
	2013	7,497,319,451,543	2,640,590,023,748	2.8392592
	2014	8,120,805,370,192	2,385,920,172,489	3.4036367
	2015	8,748,491,608,702	2,365,880,490,863	3.6977741
	2016	9,572,529,767,897	2,317,161,787,100	4.1311443
KBLI	2012	751,099,870,070	244,597,427,319	3.0707595
	2013	917,080,806,097	359,617,439,291	2.5501567
	2014	851,745,555,700	256,060,417,655	3.3263460
	2015	961,562,673,606	337,673,717,786	2.8476089
	2016	1,223,453,184,817	358,715,994,083	3.4106458
KBLM	2012	430,524,213,124	441,527,159,100	0.9750798
	2013	352,670,946,095	368,703,142,721	0.9565173
	2014	356301386185	342253230813	1.0410461
	2015	362277745626	342643691341	1.0573017
	2016	394,738,153,988	303,264,273,023	1.3016309
KDSI	2012	369,492,031,597	232,231,315,524	1.5910517
	2013	490,442,425,485	339,511,722,996	1.4445523
	2014	556,324,706,587	406,688,594,384	1.3679378
	2015	731,258,691,057	632,245,408,415	1.1566058
	2016	709,583,883,699	575,996,641,235	1.2319236
LION	2012	394,802,917,573	42,249,381,295	9.3445846
	2013	428,821,050,227	63,728,680,126	6.7288550
	2014	487,363,953,548	132,155,047,281	3.6878194
	2015	508,345,199,844	133,693,524,978	3.8023173
	2016	542,813,854,009	152,533,565,561	3.5586518
LMSH	2012	101,832,924,451	25,036,281,503	4.0674141
	2013	115,485,009,525	27,518,969,110	4.1965602
	2014	103,238,666,138	19,357,303,490	5.3333186

	2015	89,126,109,044	11,018,274,023	8.0889356
	2016	98,274,709,046	35,476,763,264	2.7701149
MERK	2012	463,883,090	119,827,938	3.8712432
	2013	588,237,590	147,818,253	3.9794652
	2014	595,338,719	129,820,145	4.5858732
	2015	483,679,971	132,435,895	3.6521818
	2016	508,615,377	120,622,129	4.2166009
MLBI	2012	462,471	796,679	0.5804985
	2013	706,252	722,542	0.9774546
	2014	816,494	1,588,801	0.5139058
	2015	709,955	1,215,227	0.5842160
	2016	901,258	1,326,261	0.6795480
MYOR	2012	5,313,599,558,516	1,924,434,119,144	2.7611231
	2013	6,430,065,428,871	2,631,646,469,682	2.4433622
	2014	6,508,768,623,440	3,114,337,601,361	2.0899368
	2015	7,454,347,029,087	3,151,495,162,694	2.3653367
	2016	8,739,782,750,141	3,884,051,319,005	2.2501718
NIPS	2012	308,486,312	278,822,186	1.1063908
	2013	534,840,333	508,836,644	1.0511042
	2014	671,452,284	518,954,801	1.2938550
	2015	701,282,705	669,595,797	1.0473224
	2016	825,372,776	677,524,406	1.2182185
PYFA	2012	68,587,818,688	28,419,830,374	2.4133789
	2013	74,973,759,491	48,785,877,103	1.5367923
	2014	78,077,523,686	47,994,726,116	1.6267938
	2015	72,745,997,374	36,534,059,349	1.9911830
	2016	83,106,443,468	37,933,579,448	2.1908411
RICY	2012	601,056,426,926	266,783,974,109	2.2529705
	2013	627,793,686,555	298,985,392,467	2.0997470
	2014	845,372,465,085	636,410,615,756	1.3283444
	2015	851,477,572,604	718,198,051,081	1.1855749
	2016	943,936,823,539	821,755,111,705	1.1486838
ROTI	2012	219,818,034,145	195,455,567,772	1.1246445
	2013	363,881,019,917	320,197,405,822	1.1364271
	2014	420,316,388,535	307,608,669,233	1.3663997
	2015	812,990,646,097	395,920,006,814	2.0534215
	2016	949,414,338,057	320,501,824,382	2.9622744
SCCO	2012	1,197,203,155,764	818,847,218,587	1.4620593

	2013	1,454,622,022,241	1,043,362,648,524	1.3941672
	2014	1,293,776,722,303	826,026,927,582	1.5662646
	2015	1,380,917,436,620	819,137,955,839	1.6858179
	2016	2,019,188,845,621	1,195,158,412,670	1.6894738
SKLT	2012	125,666,621,792	88,824,705,832	1.4147710
	2013	154,315,590,972	125,712,112,019	1.2275316
	2014	167,419,411,740	141,425,302,223	1.1838010
	2015	189,758,915,421	159,132,842,277	1.1924560
	2016	222,686,872,602	169,302,583,936	1.3153188
SMGR	2012	8,231,297,105	4,825,204,637	1.7058960
	2013	9,972,110,370	5,297,630,537	1.8823718
	2014	11,648,544,675	5,271,929,548	2.2095410
	2015	10,538,703,910	6,599,189,622	1.5969694
	2016	10,373,158,827	8,151,673,428	1.2725189
SMSM	2012	899,279	462,534	1.9442441
	2013	1,108,057	524,655	2.1119726
	2014	1,133,730	536,800	2.1120156
	2015	1,368,558	571,712	2.3937892
	2016	1,454,387	508,482	2.8602527
SRSN	2012	306,887,345	111,511,056	2.7520800
	2013	294,789,185	89,839,668	3.2812809
	2014	335,892,150	116,994,521	2.8710075
	2015	440,739,212	203,379,900	2.1670736
	2016	481,542,567	276,341,289	1.7425647
	2012	569,839,536,195	571,296,021,580	0.9974506
STTP	2013	684,263,795,106	598,988,885,897	1.1423648
	2014	799,430,399,430	538,631,479,995	1.4841880
	2015	875,469,433,776	554,491,047,968	1.5788703
	2016	921,133,961,428	556,752,312,634	1.6544771
TCID	2012	768,615,499,251	99,477,347,026	7.7265380
	2013	726,505,280,778	203,320,578,032	3.5732009
	2014	874,017,297,803	486,053,837,459	1.7981903
	2015	1,112,672,539,416	222,930,621,643	4.9911158
	2016	1,174,482,404,487	223,305,151,868	5.2595401
TOTO	2012	966,806,112,377	448,767,622,842	2.1543580
	2013	1,089,798,514,557	496,494,829,421	2.1949846
	2014	1,115,004,308,039	528,814,814,904	2.1084967
	2015	1,349,062,605,364	560,119,357,447	2.4085270
	2016	1,290,208,433,386	589,149,809,544	2.1899497
TRIS	2012	286,526,762,458	114,554,270,248	2.5012316

	2013	344,826,483,524	149,727,675,228	2.3030244
	2014	387,852,596,236	191,709,343,326	2.0231283
	2015	428,277,334,914	226,897,001,062	1.8875407
	2016	462,578,104,758	281,765,921,952	1.6417106
TRST	2012	838,465,235,358	643,329,849,780	1.3033209
	2013	1,194,457,109,014	1,045,073,685,266	1.1429406
	2014	1,182,292,914,595	955,175,792,503	1.2377752
	2015	1,137,766,718,031	869,536,723,928	1.3084746
	2016	1,179,999,891,768	909,779,313,844	1.2970177
TSPC	2012	3,393,778,315,450	1,097,134,545,306	3.0933110
	2013	3,991,115,858,814	1,347,465,965,403	2.9619419
	2014	3,714,700,991,066	1,237,332,206,210	3.0021856
	2015	4,304,922,144,352	1,696,486,657,073	2.5375514
	2016	4,385,083,916,291	1,653,413,220,121	2.6521403
ULTJ	2012	1,196,426,603,843	592,822,529,143	2.0181868
	2013	1,565,510,655,138	633,794,053,008	2.4700621
	2014	1,642,101,746,819	490,967,089,226	3.3446269
	2015	2,103,565,054,627	561,628,179,393	3.7454763
	2016	2,874,821,874,013	593,525,591,694	4.8436359
UNIT	2012	79,421,010,563	135,917,282,415	0.5843334
	2013	86,216,186,724	213,861,401,763	0.4031405
	2014	87,589,595,022	194,344,206,162	0.4506931
	2015	127,287,422,486	213,482,744,909	0.5962422
	2016	119,703,443,513	184,553,791,533	0.6486100
UNVR	2012	5,035,962	7,535,896	0.6682632
	2013	5,862,939	8,419,442	0.6963572
	2014	6,337,170	8,864,242	0.7149139
	2015	6,623,114	10,127,542	0.6539705
	2016	6,588,109	10,878,074	0.6056319

LAMPIRAN 7

DATA LAPORAN KEUANGAN PERUSAHAAN STRUKTUR MODAL
(DAR)

PERUSAHAAN	TAHUN	TOTAL HUTANG	TOTAL ASSET	DAR
AISA	2012	1,834,123	3,867,576	0.4742306
	2013	2,664,051	5,020,824	0.5306004
	2014	3,787,932	7,373,868	0.5136967
	2015	5,094,072	9,060,979	0.5621989
	2016	4,990,139	9,254,539	0.5392099
AKPI	2012	871,567,714	1,714,834,430	0.5082518
	2013	1,055,230,963	2,084,567,189	0.5062111
	2014	1,195,437,301	2,227,042,590	0.5367824
	2015	1,775,577,239	2,883,143,132	0.6158478
	2016	1,495,874,021	2,615,909,190	0.5718371
ALDO	2012	108,756,811,468	216,293,168,908	0.5028213
	2013	161,595,933,059	301,479,232,221	0.5360102
	2014	197,870,888,906	346,674,687,826	0.5707682
	2015	195,081,792,385	366,010,819,198	0.5329946
	2016	209,442,676,180	410,330,576,602	0.5104242
AMFG	2012	658,332	3,115,421	0.2113140
	2013	778,666	3,539,393	0.2199999
	2014	844,685	3,946,125	0.2140543
	2015	880,052	4,270,275	0.2060879
	2016	1,905,626	5,504,890	0.3461697
APLI	2012	115,231,507,057	333,867,300,446	0.3451416

	2013	85,871,301,621	303,594,490,546	0.2828487
	2014	48,553,666,580	273,126,657,794	0.1777698
	2015	87,059,306,497	308,620,387,248	0.2820919
	2016	67,967,245,679	314,468,690,130	0.2161336
ARNA	2012	332,551,590,871	937,359,770,277	0.3547748
	2013	336,754,918,531	1,135,244,802,060	0.2966364
	2014	349,995,874,987	1,259,938,133,543	0.2777881
	2015	536,050,998,398	1,430,779,475,454	0.3746566
	2016	595,128,097,887	1,543,216,299,146	0.3856414
ASII	2012	92,460	182,274	0.5072583
	2013	107,806	213,994	0.5037805
	2014	115,840	236,027	0.4907913
	2015	118,902	245,435	0.4844541
	2016	121,949	261,855	0.4657119
AUTO	2012	3,396,543	8,881,642	0.3824229
	2013	3,058,924	12,617,678	0.2424316
	2014	4,244,862	14,387,568	0.2950368
	2015	4,195,684	14,339,110	0.2926042
	2016	4,075,716	14,612,274	0.2789241
BUDI	2012	1,445,537	2,299,672	0.6285840
	2013	1,497,754	2,382,875	0.6285491
	2014	1,568,051	2,476,982	0.6330490
	2015	2,160,702	3,265,953	0.6615839
	2016	1,766,825	2,931,807	0.6026403
CPIN	2012	4,172,163	12,348,627	0.3378645
	2013	3,444,249	15,722,197	0.2190692
	2014	9,836,577	20,841,795	0.4719640
	2015	12,123,488	24,684,915	0.4911294
	2016	10,047,751	24,204,994	0.4151107
DLTA	2012	147,095,322	745,306,835	0.1973621
	2013	190,482,809	867,040,802	0.2196930
	2014	237,047,063	997,443,167	0.2376547
	2015	188,700,435	1,038,321,916	0.1817360
	2016	185,422,642	1,197,796,650	0.1548031
DPNS	2012	28,939,822,487	184,533,123,823	0.1568273
	2013	32,944,704,261	256,372,669,050	0.1285032
	2014	32,849,679,334	268,891,042,610	0.1221673
	2015	33,187,031,327	274,483,110,371	0.1209074
	2016	32,865,162,199	296,129,565,784	0.1109824
DVLA	2012	233,144,997	1,074,691,476	0.2169413
	2013	275,351,336	1,190,054,288	0.2313771

	2014	293,785,055	1,241,239,780	0.2366868
	2015	402,760,903	1,376,278,237	0.2926450
	2016	451,785,946	1,531,365,558	0.2950216
EKAD	2012	81,915,660,390	273,893,467,429	0.2990785
	2013	105,893,942,734	343,601,504,089	0.3081882
	2014	143,820,128,736	411,726,182,748	0.3493101
	2015	97,730,178,889	389,691,595,500	0.2507885
	2016	110,503,822,983	702,508,630,708	0.1572989
GGRM	2012	14,903,612	41,509,325	0.3590425
	2013	21,353,980	50,770,251	0.4206002
	2014	25,099,875	58,234,278	0.4310155
	2015	25,497,504	63,505,413	0.4015013
	2016	23,387,406	62,951,634	0.3715139
ICBP	2012	5,835,523	17,819,884	0.3274726
	2013	8,621,314	21,410,331	0.4026707
	2014	10,445,187	25,029,488	0.4173152
	2015	10,173,713	26,560,624	0.3830374
	2016	10,401,125	28,901,948	0.3598763
IGAR	2012	70,313,908,037	312,342,760,278	0.2251178
	2013	89,003,869,709	314,746,644,499	0.2827794
	2014	92,945,504,329	350,619,526,939	0.2650894
	2015	73,471,782,127	383,936,040,590	0.1913646
	2016	65,716,637,766	439,465,673,296	0.1495376
INAI	2012	483,005,957,440	612,224,219,835	0.7889364
	2013	639,563,606,250	765,881,409,376	0.8350687
	2014	771,921,558,950	893,663,745,450	0.8637718
	2015	1,090,438,393,880	1,330,259,296,537	0.8197187
	2016	1,081,015,810,782	1,339,032,413,455	0.8073112
INCI	2012	16,518,960,939	132,278,839,079	0.1248798
	2013	10,050,376,983	136,142,063,219	0.0738227
	2014	11,328,447,922	147,755,842,523	0.0766701
	2015	15,494,757,317	169,546,066,314	0.0913897
	2016	26,524,918,593	269,351,381,344	0.0984770
INDF	2012	25,249,168	59,389,405	0.4251460
	2013	39,719,660	78,092,789	0.5086214
	2014	45,803,053	86,077,251	0.5321157
	2015	48,709,933	91,831,526	0.5304271
	2016	38,233,092	82,174,515	0.4652670
INDS	2012	528,206,496,386	1,664,779,358,215	0.3172832
	2013	443,652,749,965	2,196,518,364,473	0.2019800
	2014	459,998,606,660	2,282,666,078,493	0.2015181

	2015	634,889,428,231	2,553,928,346,219	0.2485933
	2016	409,208,624,907	2,477,272,502,538	0.1651851
INTP	2012	3,336,422	22,755,160	0.1466227
	2013	3,852,446	26,610,663	0.1447708
	2014	4,307,622	28,884,635	0.1491320
	2015	3,772,410	27,638,360	0.1364918
	2016	4,011,877	30,150,580	0.1330614
JECC	2012	566,079,393	708,955,186	0.7984699
	2013	1,092,161,372	1,239,821,716	0.8809020
	2014	897,735,513	1,064,129,232	0.8436339
	2015	990,707,822	1,358,464,081	0.7292853
	2016	1,116,872,234	1,587,210,576	0.7036699
JPFA	2012	6,198,137	10,961,464	0.5654479
	2013	9,672,368	14,917,590	0.6483868
	2014	10,579,414	15,758,959	0.6713270
	2015	11,049,774	17,159,466	0.6439463
	2016	9,878,062	19,251,026	0.5131187
KAEF	2012	634,813,891,119	2,076,347,580,785	0.3057358
	2013	847,584,859,909	2,471,939,548,890	0.3428825
	2014	1,291,699,778,059	3,012,778,637,568	0.4287404
	2015	1,374,127,253,841	3,236,224,076,311	0.4246082
	2016	2,341,155,131,870	4,612,562,541,064	0.5075606
KBLF	2012	2,046,313,566,061	9,417,957,180,958	0.2172779
	2013	2,815,103,309,451	11,315,061,275,126	0.2487926
	2014	2,675,166,377,592	12,439,267,396,015	0.2150582
	2015	2,758,131,396,170	13,696,417,381,439	0.2013761
	2016	2,762,162,069,572	15,226,009,210,657	0.1814108
KBLI	2012	316,557,195,204	1,161,698,219,225	0.2724952
	2013	450,372,591,220	1,337,022,291,951	0.3368475
	2014	414,243,649,312	1,340,881,252,563	0.3089339
	2015	524,437,909,934	1,551,799,840,976	0.3379546
	2016	550,076,575,595	1,871,422,416,044	0.2939350
KBLM	2012	458,195,274,791	722,941,339,245	0.6337932
	2013	384,632,097,122	654,296,256,935	0.5878562
	2014	356,961,782,297	647,249,655,440	0.5515056
	2015	357,910,337,055	654,385,717,061	0.5469409
	2016	318,436,089,653	639,091,366,917	0.4982638
KDSI	2012	254,557,936,376	570,564,051,755	0.4461514
	2013	498,224,954,613	850,233,842,186	0.5859858
	2014	588,299,859,463	960,332,553,887	0.6126001
	2015	798,172,379,792	1,177,093,668,866	0.6780874

	2016	722,488,734,446	1,142,273,020,550	0.6325009
LION	2012	61,667,655,113	433,497,042,140	0.1422562
	2013	82,783,559,318	498,567,897,161	0.1660427
	2014	179,232,241,844	605,165,911,239	0.2961704
	2015	184,730,654,202	639,330,150,373	0.2889441
	2016	215,209,902,816	685,812,995,987	0.3138026
LMSH	2012	31,022,520,184	128,547,715,366	0.2413308
	2013	31,299,504,329	141,697,598,705	0.2208894
	2014	28,441,933,937	141,034,984,628	0.2016658
	2015	21,341,373,897	133,782,751,041	0.1595226
	2016	45,511,700,128	162,828,169,250	0.2795075
MERK	2012	152,689,086	569,430,951	0.2681433
	2013	184,727,696	696,946,318	0.2650530
	2014	166,811,511	711,055,830	0.2345969
	2015	168,103,536	641,646,818	0.2619876
	2016	161,262,425	743,934,894	0.2167695
MLBI	2012	822,195	1,152,048	0.7136812
	2013	794,615	1,782,148	0.4458749
	2014	1,677,254	2,231,051	0.7517775
	2015	1,334,373	2,100,853	0.6351577
	2016	1,454,398	2,275,038	0.6392851
MYOR	2012	5,234,655,914,665	8,302,506,241,903	0.6304911
	2013	5,771,077,430,823	9,709,838,250,473	0.5943536
	2014	6,220,960,735,713	10,297,997,020,540	0.6040942
	2015	6,148,255,759,034	11,342,715,686,221	0.5420444
	2016	6,657,165,872,077	12,922,421,859,142	0.5151639
NIPS	2012	322,620,214	524,693,874	0.6148732
	2013	562,461,853	798,407,625	0.7044796
	2014	624,632,294	1,206,854,400	0.5175705
	2015	938,717,411	1,547,720,090	0.6065163
	2016	935,375,496	1,777,956,390	0.5260959
PYFA	2012	48,144,037,183	135,849,510,061	0.3543924
	2013	80,936,445,295	175,048,620,682	0.4623655
	2014	75,460,789,155	172,557,400,461	0.4373083
	2015	58,729,478,032	159,951,537,229	0.3671705
	2016	61,554,005,181	167,062,795,608	0.3684483
RICY	2012	475,541,284,698	842,498,674,322	0.5644416
	2013	497,223,323,456	869,226,313,138	0.5720298
	2014	781,749,249,068	1,172,012,468,004	0.6670144
	2015	798,114,824,380	1,198,193,867,892	0.6660982
	2016	876,184,855,001	1,288,683,925,066	0.6799067

ROTI	2012	538,337,083,673	1,204,944,681,223	0.4467733
	2013	1,035,351,397,437	1,822,689,047,108	0.5680351
	2014	1,182,771,921,472	2,142,894,276,216	0.5519507
	2015	1,517,788,685,162	2,706,323,637,034	0.5608304
	2016	1,476,889,086,692	2,919,640,858,718	0.5058461
SCCO	2012	832,876,706,628	1,486,921,371,360	0.5601350
	2013	1,054,421,170,969	1,762,032,300,123	0.5984119
	2014	846,052,863,354	1,656,007,190,010	0.5108993
	2015	850,791,824,810	1,773,144,328,632	0.4798210
	2016	1,229,514,818,362	2,449,935,491,586	0.5018560
SKLT	2012	120,263,906,808	249,746,467,756	0.4815440
	2013	162,339,135,063	301,989,488,699	0.5375655
	2014	178,206,785,017	331,574,891,637	0.5374556
	2015	225,066,080,248	377,110,748,359	0.5968169
	2016	272,088,644,079	568,239,939,951	0.4788270
SMGR	2012	8,414,229,138	26,579,083,786	0.3165733
	2013	8,988,908,217	30,792,884,092	0.2919151
	2014	9,326,744,733	34,331,674,737	0.2716659
	2015	10,712,320,531	38,153,118,932	0.2807718
	2016	13,652,504,525	44,226,895,982	0.3086924
SMSM	2012	620,875	1,441,204	0.4308030
	2013	716,547	1,717,857	0.4171168
	2014	635,514	1,757,634	0.3615736
	2015	779,860	2,220,108	0.3512712
	2016	674,685	2,254,740	0.2992296
SRSN	2012	132,904,817	402,108,960	0.3305194
	2013	106,406,914	420,782,548	0.2528786
	2014	140,918,993	464,949,206	0.3030847
	2015	233,993,478	574,073,314	0.4076021
	2016	315,096,071	717,149,704	0.4393728
	2012	670,149,495,580	1,249,840,835,890	0.5361879
STTP	2013	775,930,985,779	1,470,059,394,892	0.5278229
	2014	884,693,224,635	1,700,204,093,895	0.5203453
	2015	910,758,598,913	1,919,568,037,170	0.4744602
	2016	1,167,899,357,271	2,336,411,494,941	0.4998689
TCID	2012	164,751,376,547	1,261,572,952,461	0.1305920
	2013	282,961,770,795	1,465,952,460,752	0.1930225
	2014	569,730,901,368	1,853,235,343,636	0.3074250
	2015	367,225,370,670	2,082,096,848,703	0.1763729
	2016	401,942,530,776	2,185,101,038,101	0.1839469

TOTO	2012	624,499,013,875	1,522,663,914,388	0.4101358
	2013	710,527,268,893	1,746,177,682,568	0.4069043
	2014	936,489,293,896	2,062,386,924,390	0.4540803
	2015	947,997,940,099	2,439,540,859,205	0.3885969
	2016	1,057,566,418,720	2,581,440,938,262	0.4096807
TRIS	2012	123,691,800,811	366,248,271,960	0.3377266
	2013	166,702,353,369	449,008,821,261	0.3712674
	2014	213,369,013,290	521,920,090,728	0.4088155
	2015	245,138,356,170	574,346,433,075	0.4268127
	2016	293,073,984,034	639,701,164,511	0.4581420
TRST	2012	835,136,579,731	2,188,129,039,119	0.3816670
	2013	1,553,844,457,566	3,260,919,505,192	0.4765050
	2014	1,504,845,098,173	3,261,285,495,052	0.4614270
	2015	1,400,438,809,900	3,357,359,499,954	0.4171251
	2016	1,358,241,040,272	3,290,596,224,286	0.4127644
TSPC	2012	1,279,828,890,909	4,632,984,970,719	0.2762428
	2013	1,545,006,061,565	5,407,957,915,805	0.2856912
	2014	1,527,428,955,386	5,609,556,653,195	0.2722905
	2015	1,947,588,124,083	6,284,729,099,203	0.3098921
	2016	1,950,534,206,746	6,585,807,349,438	0.2961724
ULTJ	2012	744,274,268,607	2,420,793,382,029	0.3074506
	2013	796,474,448,056	2,811,620,982,142	0.2832795
	2014	644,827,122,017	2,918,133,278,435	0.2209725
	2015	742,490,216,326	3,539,995,910,248	0.2097432
	2016	749,966,146,582	4,239,199,641,365	0.1769122
UNIT	2012	139,475,335,813	379,900,742,389	0.3671363
	2013	217,861,673,225	459,118,935,528	0.4745212
	2014	198,280,335,744	440,522,832,644	0.4501023
	2015	217,565,067,467	460,539,382,206	0.4724136
	2016	188,891,359,540	432,913,180,372	0.4363262
UNVR	2012	8,016,614	11,984,979	0.6688884
	2013	9,093,518	13,348,188	0.6812549
	2014	9,534,156	14,280,670	0.6676267
	2015	10,902,585	15,729,945	0.6931102
	2016	12,041,437	6,588,109	1.8277532

LAMPIRAN 8

DATA LAPORAN KEUANGAN PERUSAHAAN UKURAN PERUSAHAAN
(SIZE)

PERUSAHAAN	TAHUN	total penjualan	SIZE
AISA	2012	2,747,623,000,000	28.6417573
	2013	4,056,735,000,000	29.0313996
	2014	5,139,974,000,000	29.2680691
	2015	6,010,895,000,000	29.4245948
	2016	6,545,680,000,000	29.5098264
AKPI	2012	31,115,755,000	24.1609801
	2013	34,620,336,000	24.2677071
	2014	1,107,565,893,000	27.7331858
	2015	2,017,466,511,000	28.3328636
	2016	2,047,218,639,000	28.3475032
ALDO	2012	318,332,488,772	26.4863622
	2013	399,345,658,763	26.7130932
	2014	493,881,857,454	26.9255622
	2015	538,363,112,800	27.0117991
	2016	666,434,061,412	27.2252070
AMFG	2012	2,857,310,000,000	28.6809017
	2013	3,216,480,000,000	28.7993087
	2014	3,672,186,000,000	28.9318082
	2015	3,665,989,000,000	28.9301193
	2016	3,724,075,000,000	28.9458396
APLI	2012	343,677,756,488	26.5629703
	2013	281,551,386,863	26.3635808

	2014	294,081,114,204	26.4071215
	2015	260,667,211,707	26.2865104
	2016	319,727,703,679	26.4907355
ARNA	2012	1,113,663,603,211	27.7386762
	2013	1,417,640,229,330	27.9800148
	2014	1,609,758,677,687	28.1071054
	2015	1,291,926,384,471	27.8871555
	2016	1,511,978,367,218	28.0444401
ASII	2012	188,053,000,000,000	32.8677450
	2013	193,880,000,000,000	32.8982605
	2014	201,701,000,000,000	32.9378075
	2015	184,196,000,000,000	32.8470215
	2016	181,084,000,000,000	32.8299821
AUTO	2012	8,277,485,000,000	29.7445603
	2013	10,701,988,000,000	30.0014506
	2014	12,255,427,000,000	30.1369900
	2015	11,723,787,000,000	30.0926410
	2016	12,806,867,000,000	30.1810026
BUDI	2012	2,295,369,000,000	28.4619147
JUTA	2013	2,568,954,000,000	28.5745199
	2014	2,284,211,000,000	28.4570418
	2015	2,378,805,000,000	28.4976194
	2016	2,467,553,000,000	28.5342481
CPIN	2012	21,310,925,000,000	30.6902410
	2013	25,662,992,000,000	30.8760711
	2014	29,150,275,000,000	31.0034855
	2015	30,107,727,000,000	31.0358030
	2016	38,256,857,000,000	31.2753439
DLTA	2012	1,719,814,548,000	28.1732376
	2013	2,001,358,536,000	28.3248473
	2014	2,111,639,244,000	28.3784857
	2015	1,573,137,749,000	28.0840933
	2016	1,658,618,899,000	28.1370064
DPNS	2012	146,690,966,909	25.7115939
	2013	131,333,196,189	25.6010034
	2014	132,775,925,237	25.6119288
	2015	118,475,319,120	25.4979705
	2016	115,940,711,050	25.4763448
DVLA	2012	1,087,379,869,000	27.7147921
	2013	1,101,684,170,000	27.7278612
	2014	1,103,821,775,000	27.7297996

	2015	1,306,098,136,000	27.8980653
	2016	1,451,356,680,000	28.0035199
EKAD	2012	385,037,050,333	26.6766054
	2013	418,668,758,096	26.7603459
	2014	526,573,620,057	26.9896570
	2015	531,537,606,573	26.9990398
	2016	568,638,832,579	27.0665113
GGRM	2012	49,028,696,000,000	31.5234269
	2013	55,436,954,000,000	31.6462675
	2014	65,185,850,000,000	31.8082635
	2015	70,365,573,000,000	31.8847252
	2016	76,274,147,000,000	31.9653552
ICBP	2012	21,716,913,000,000	30.7091125
	2013	25,094,681,000,000	30.8536770
	2014	30,022,463,000,000	31.0329670
	2015	31,741,094,000,000	31.0886333
	2016	34,466,069,000,000	31.1709964
IGAR	2012	556,445,856,927	27.0448357
	2013	643,403,327,263	27.1900376
	2014	737,863,227,409	27.3270243
	2015	677,331,846,043	27.2414272
	2016	792,794,834,768	27.3988303
INAI	2012	582,654,361,422	27.0908600
	2013	640,702,671,875	27.1858313
	2014	933,462,438,255	27.5621666
	2015	1,384,675,922,166	27.9564872
	2016	1,284,510,320,664	27.8813987
INCI	2012	64,628,362,916	24.8919192
	2013	81,244,267,131	25.1207261
	2014	110,023,088,698	25.4239561
	2015	136,668,408,270	25.6408235
	2016	176,067,561,639	25.8941336
INDF	2012	50,201,548,000,000	31.5470670
	2013	57,731,998,000,000	31.6868327
	2014	63,594,452,000,000	31.7835473
	2015	64,161,947,000,000	31.7924314
	2016	66,750,317,000,000	31.8319802
INDS	2012	1,476,987,701,603	28.0210258
	2013	1,702,447,098,851	28.1630878
	2014	1,866,977,260,105	28.2553418
	2015	1,659,505,639,261	28.1375409

	2016	1,637,036,790,119	28.1239089
INTP	2012	17,290,337,000,000	30.4811689
	2013	19,691,286,000,000	30.6111973
	2014	19,996,264,000,000	30.6265666
	2015	17,798,055,000,000	30.5101103
	2016	15,361,894,000,000	30.3629111
JECC	2012	1,234,827,852,000	27.8419527
	2013	1,490,073,098,000	28.0298463
	2014	1,493,012,114,000	28.0318167
	2015	1,663,335,876,000	28.1398463
	2016	2,037,784,842,000	28.3428845
JPFA	2012	17,832,702,000,000	30.5120551
	2013	21,412,085,000,000	30.6949766
	2014	24,458,880,000,000	30.8280145
	2015	25,022,913,000,000	30.8508130
	2016	27,063,310,000,000	30.9292001
KAEF	2012	3,734,241,101,309	28.9485657
	2013	4,348,073,988,385	29.1007541
	2014	4,521,024,379,760	29.1397597
	2015	4,860,371,483,524	29.2121360
	2016	5,811,502,656,431	29.3908603
KBLF	2012	13,636,405,178,957	30.2437642
	2013	16,002,131,057,048	30.4037430
	2014	17,368,532,547,558	30.4856812
	2015	17,887,464,223,321	30.5151213
	2016	19,374,230,957,505	30.5949650
KBLI	2012	2,572,350,076,614	28.5758410
	2013	2,273,197,243,380	28.4522084
	2014	2,384,078,038,239	28.4998336
	2015	2,662,038,531,021	28.6101133
	2016	2,812,196,217,447	28.6649869
KBLM	2012	1,020,197,078,016	27.6510169
	2013	1,032,787,438,869	27.6632825
	2014	919,537,870,594	27.5471371
	2015	967,710,339,797	27.5981986
	2016	987,409,109,474	27.6183503
KDSI	2012	1,301,332,627,213	27.8944100
	2013	1,386,314,584,485	27.9576700
	2014	1,626,232,662,544	28.1172872
	2015	1,713,946,192,967	28.1698195
	2016	1,995,337,146,834	28.3218341

LION	2012	333,921,950,207	26.5341731
	2013	333,674,349,966	26.5334314
	2014	377,622,622,150	26.6571612
	2015	389,251,192,409	26.6874907
	2016	379,137,149,036	26.6611638
LMSH	2012	223,079,062,667	26.1307921
	2013	256,210,760,822	26.2692662
	2014	249,072,012,369	26.2410079
	2015	174,598,965,938	25.8857576
	2016	157,855,084,036	25.7849433
MERK	2012	929,876,824,000	27.5583180
	2013	1,193,952,302,000	27.8082902
	2014	863,207,535,000	27.4839210
	2015	983,446,471,000	27.6143290
	2016	1,034,806,890,000	27.6652359
MLBI	2012	1,566,984,000,000	28.0801739
	2013	3,561,989,000,000	28.9013402
	2014	2,988,501,000,000	28.7257930
	2015	2,696,318,000,000	28.6229083
	2016	3,263,311,000,000	28.8137634
MYOR	2012	10,510,625,669,832	29.9834078
	2013	12,017,837,133,337	30.1174131
	2014	14,169,088,278,238	30.2820838
	2015	14,818,730,635,847	30.3269131
	2016	18,349,959,898,358	30.5406485
NIPS	2012	702,719,255,000	27.2782233
	2013	911,064,069,000	27.5378791
	2014	1,015,868,035,000	27.6467646
	2015	987,862,829,000	27.6188097
	2016	1,039,635,856,000	27.6698916
PYFA	2012	176,730,979,672	25.8978945
	2013	192,555,731,180	25.9836515
	2014	222,302,407,528	26.1273045
	2015	217,843,921,422	26.1070447
	2016	216,951,583,953	26.1029401
RICY	2012	166,164,356,847	25.8362432
	2013	256,726,418,918	26.2712768
	2014	1,185,443,580,242	27.8011381
	2015	1,111,051,293,008	27.7363278
	2016	1,221,519,096,811	27.8311164
ROTI	2012	1,190,825,893,340	27.8056682

	2013	1,505,519,937,691	28.0401594
	2014	1,880,262,901,697	28.2624327
	2015	2,174,501,712,899	28.4078207
	2016	2,521,920,968,213	28.5560420
SCCO	2012	3,542,885,004,273	28.8959625
	2013	3,751,042,310,613	28.9530549
	2014	3,703,267,949,291	28.9402368
	2015	3,533,081,041,052	28.8931914
	2016	3,742,637,722,322	28.9508118
SKLT	2012	401,724,215,506	26.7190317
	2013	567,048,547,543	27.0637108
	2014	681,419,524,161	27.2474440
	2015	745,107,731,208	27.3367947
	2016	833,850,372,883	27.4493198
SMGR	2012	19,598,247,884,000	30.6064613
	2013	24,501,240,780,000	30.8297449
	2014	26,987,035,135,000	30.9263777
	2015	26,948,004,471,000	30.9249304
	2016	26,134,306,138,000	30.8942700
SMSM	2012	2,163,842,000,000	28.4029065
	2013	2,372,982,000,000	28.4951685
	2014	2,632,860,000,000	28.5990918
	2015	2,802,924,000,000	28.6616843
	2016	2,879,876,000,000	28.6887684
SRSN	2012	384,145,388,000	26.6742869
	2013	392,315,526,000	26.6953323
	2014	472,834,591,000	26.8820115
	2015	531,573,325,000	26.9991070
	2016	500,539,668,000	26.9389527
	2012	1,283,736,251,902	27.8807959
STTP	2013	1,694,935,468,814	28.1586658
	2014	2,170,464,194,350	28.4059622
	2015	2,544,277,844,656	28.5648680
	2016	2,629,107,367,897	28.5976655
TCID	2012	1,851,152,825,559	28.2468297
	2013	2,027,899,402,527	28.3380216
	2014	2,308,203,551,971	28.4674907
	2015	2,314,889,854,074	28.4703832
	2016	2,526,776,164,168	28.5579654
TOTO	2012	1,576,763,006,759	28.0863951
	2013	1,711,306,783,682	28.1682784

	2014	2,053,630,374,083	28.3506303
	2015	2,278,673,871,193	28.4546148
	2016	2,069,017,634,710	28.3580950
TRIS	2012	558,886,515,975	27.0492123
	2013	670,290,947,164	27.2309777
	2014	746,828,922,732	27.3391020
	2015	859,743,472,895	27.4798999
	2016	901,909,489,240	27.5277800
TRST	2012	1,949,153,201,410	28.2984161
	2013	2,033,149,367,039	28.3406071
	2014	2,507,884,797,367	28.5504608
	2015	2,457,349,444,991	28.5301044
	2016	2,249,418,846,803	28.4416930
TSPC	2012	6,630,809,553,343	29.5227480
	2013	6,854,889,233,121	29.5559833
	2014	7,512,115,037,587	29.6475382
	2015	8,181,481,867,179	29.7328944
	2016	9,138,238,993,842	29.8434888
ULTJ	2012	2,809,851,307,439	28.6641527
	2013	3,460,231,249,075	28.8723565
	2014	3,916,789,366,423	28.9962934
	2015	4,393,932,684,171	29.1112458
	2016	4,685,987,917,355	29.1755979
UNIT	2012	88,465,983,753	25.2058840
	2013	101,886,214,646	25.3471225
	2014	102,448,044,300	25.3526216
	2015	118,260,140,704	25.4961526
	2016	104,109,821,503	25.3687122
UNVR	2012	27,303,248,000,000	30.9380268
	2013	30,757,435,000,000	31.0571529
	2014	34,511,534,000,000	31.1723147
	2015	36,484,030,000,000	31.2278957
	2016	40,053,732,000,000	31.3212430

LAMPIRAN 9
HASIL OLAH DATA

1. ANALISIS DESKRIPTIF

a. Deskriptif sebelum outlier

	PBV	ROE	CR	DAR	SIZE
Mean	3.274729	0.176386	2.685953	0.404681	28.43270
Median	1.468010	0.139995	2.023128	0.402670	28.32183
Maximum	58.48124	1.435333	15.16460	0.880900	32.93781
Minimum	0.048280	0.001008	0.403141	0.073820	24.16098
Std. Dev.	6.963930	0.216443	2.290083	0.177897	1.768424
Skewness	5.870731	4.032834	2.749802	0.324595	0.306695
Kurtosis	40.15075	20.95575	12.34679	2.437759	2.776034
Jarque-Bera Probability	16382.18 0.000000	4181.380 0.000000	1269.187 0.000000	7.959545 0.018690	4.601657 0.100176
Sum	848.1549	45.68402	695.6619	104.8125	7364.070
Sum Sq. Dev.	12512.05	12.08664	1353.076	8.164993	806.8498
Observations	259	259	259	259	259

b. Deskriptif setelah outlier

	PBV	ROE	CR	DAR	SIZE
--	-----	-----	----	-----	------

Mean	2.295581	0.137425	2.283830	0.414673	28.44938
Median	1.466070	0.135810	2.018190	0.407600	28.33802
Maximum	8.265220	0.379410	6.148260	0.880900	31.96536
Minimum	0.048280	0.001010	0.403140	0.133060	24.16098
Std. Dev.	2.073326	0.085651	1.222075	0.165519	1.591795
Skewness	1.096722	0.508228	1.072419	0.469319	0.210575
Kurtosis	3.191911	2.861321	3.502139	2.675185	2.724566
Jarque-Bera Probability	45.45021 0.000000	9.866400 0.007203	45.49192 0.000000	9.248858 0.009809	2.374044 0.305129
Sum	516.5058	30.92064	513.8618	93.30141	6401.111
Sum Sq. Dev.	962.9044	1.643283	334.5366	6.136853	567.5734
Observations	225	225	225	225	225

2. ANALISIS REGRESI LINIER BERGANDA

Dependent Variable: PBV

Method: Least Squares

Date: 03/16/18 Time: 22:54

Sample (adjusted): 1 259

Included observations: 225 after adjustments

Weighting series: ROE

Weight type: Variance (average scaling)

Variable	Coefficient	Std. Error	t-Statistic	Prob.
C	-2.331682	0.838003	-2.782427	0.0059
ROE	16.09819	0.881662	18.25892	0.0000
CR	-0.185790	0.069654	-2.667313	0.0082
DAR	-0.732165	0.381796	-1.917686	0.0564
SIZE	0.110473	0.033615	3.286443	0.0012

Weighted Statistics

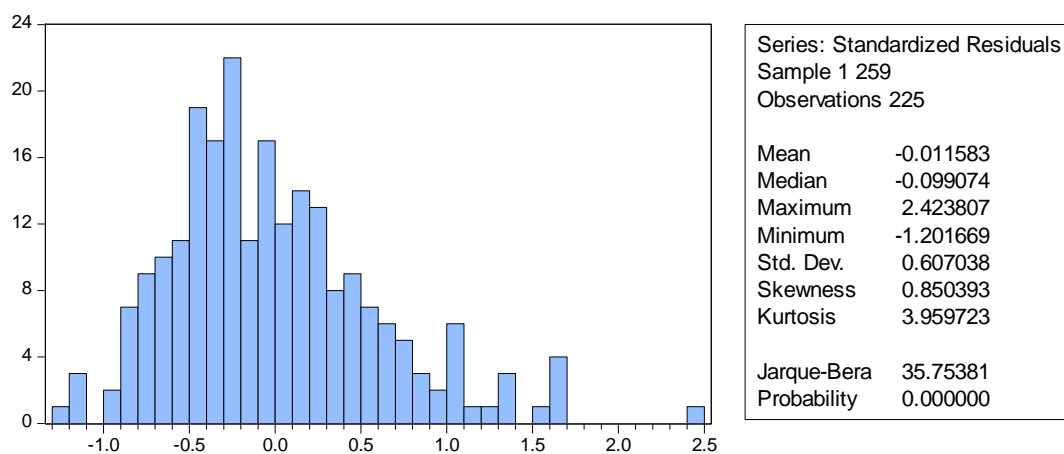
R-squared	0.716401	Mean dependent var	1.070428
Adjusted R-squared	0.711245	S.D. dependent var	0.732739
S.E. of regression	0.612644	Akaike info criterion	1.879906
Sum squared resid	82.57321	Schwarz criterion	1.955820
Log likelihood	-206.4895	Hannan-Quinn criter.	1.910545
F-statistic	138.9361	Durbin-Watson stat	1.975094
Prob(F-statistic)	0.000000	Weighted mean dep.	0.621515

Unweighted Statistics

R-squared	0.575627	Mean dependent var	2.295581
Adjusted R-squared	0.567911	S.D. dependent var	2.073326
S.E. of regression	1.362869	Sum squared resid	408.6308
Durbin-Watson stat	2.010181		

3. UJI ASUMSI KLASIK

a. uji Normalitas



b. Uji Multikolinieritas

Variable	Coefficient Variance	Uncentered VIF	Centered VIF
C	0.702249	420.9758	NA
ROE	0.777328	2.150207	1.624845
CR	0.004852	8.457142	2.742383
DAR	0.145768	17.00569	1.659303
SIZE	0.001130	494.6421	1.781402

c. Uji Autokorelasi

Weighted Statistics			
R-squared	0.716401	Mean dependent var	1.070428
Adjusted R-squared	0.711245	S.D. dependent var	0.732739
S.E. of regression	0.612644	Akaike info criterion	1.879906
Sum squared resid	82.57321	Schwarz criterion	1.955820
Log likelihood	-206.4895	Hannan-Quinn criter.	1.910545
F-statistic	138.9361	Durbin-Watson stat	1.975094
Prob(F-statistic)	0.000000	Weighted mean dep.	0.621515

d. Uji Heterosedastisitas

Sebelum di bobot

Heteroskedasticity Test: White

F-statistic	3.542734	Prob. F(14,210)	0.0000
Obs*R-squared	42.98800	Prob. Chi-Square(14)	0.0001
Scaled explained SS	64.12047	Prob. Chi-Square(14)	0.0000

Test Equation:

Dependent Variable: RESID²

Method: Least Squares

Date: 03/06/18 Time: 11:48

Sample: 1 259

Included observations: 225

Variable	Coefficient	Std. Error	t-Statistic	Prob.
C	-68.47987	62.23504	-1.100343	0.2724
ROE ²	-40.93915	28.67608	-1.427641	0.1549
ROE*CR	5.260443	3.078891	1.708551	0.0890
ROE*DAR	24.80443	22.97912	1.079433	0.2816
ROE*SIZE	0.864821	2.633538	0.328387	0.7429
ROE	-18.20209	73.69508	-0.246992	0.8052
CR ²	-0.191184	0.228588	-0.836372	0.4039
CR*DAR	-2.213808	3.419185	-0.647467	0.5180
CR*SIZE	-0.086530	0.172223	-0.502429	0.6159
CR	3.323837	5.132017	0.647667	0.5179
DAR ²	-9.184524	10.51413	-0.873541	0.3834
DAR*SIZE	0.982648	1.344049	0.731110	0.4655
DAR	-18.02526	40.88877	-0.440837	0.6598
SIZE ²	-0.096042	0.077996	-1.231358	0.2196
SIZE	5.061030	4.350141	1.163417	0.2460
R-squared	0.191058	Mean dependent var	1.738940	
Adjusted R-squared	0.137128	S.D. dependent var	3.078586	
S.E. of regression	2.859726	Akaike info criterion	5.003669	
Sum squared resid	1717.387	Schwarz criterion	5.231409	
Log likelihood	-547.9128	Hannan-Quinn criter.	5.095586	
F-statistic	3.542734	Durbin-Watson stat	1.661670	
Prob(F-statistic)	0.000031			

setelah di bobot

Heteroskedasticity Test: White

F-statistic	2.054107	Prob. F(5,219)	0.0723
Obs*R-squared	10.07923	Prob. Chi-Square(5)	0.0730
Scaled explained SS	13.94374	Prob. Chi-Square(5)	0.0160

Test Equation:

Dependent Variable: WGT_RESID^2

Method: Least Squares

Date: 03/17/18 Time: 18:10

Sample: 1 259

Included observations: 225

Variable	Coefficient	Std. Error	t-Statistic	Prob.
C	0.165858	0.093861	1.767062	0.0786
ROE^2*WGT^2	43.76598	15.93659	2.746258	0.0065
CR^2*WGT^2	-0.010672	0.016695	-0.639254	0.5233
DAR^2*WGT^2	0.019987	0.237215	0.084257	0.9329
SIZE^2*WGT^2	0.000396	0.000421	0.941883	0.3473
WGT^2	-0.262920	0.254192	-1.034333	0.3021
R-squared	0.044797	Mean dependent var		0.366992
Adjusted R-squared	0.022988	S.D. dependent var		0.625712
S.E. of regression	0.618478	Akaike info criterion		1.903195
Sum squared resid	83.77088	Schwarz criterion		1.994291
Log likelihood	-208.1095	Hannan-Quinn criter.		1.939962
F-statistic	2.054107	Durbin-Watson stat		1.762353
Prob(F-statistic)	0.072306			