

LAMPIRAN

Transformasi 1 Gardu Induk 150 kV Bantul



Setting Rele Sisi Incoming 20 kV

OCR dan GFR sisi 20 kV	SEG MRI3-11E1D	<i>Rasio CT = 2000/5, In Ry = 5 A</i>	<i>Rasio CT = 2000/5, In Ry = 5 A</i> ✓
	Range OCR I>: 0.20 In – 4.00 In TMS : 0.05 – 10 I>>: 0.5 – 40 x In tI: 0.03 – 10 s Range GFR I>: 0.01 In – 2.00 In TMS : 0.05 – 10 I>>: 0.01 – 15 x In tI: 0.03 – 10 s	OCR Is = 5,00 A Tap = 1,00 x IN TMS = 0,25 (SI) OCR High Set I>> = 17,5 A t>> = 0,5 detik GFR Is = 2,00 A Tap = 0,40 x IN TMS = 0,40 (SI) GFR High set I>> = 17,5 A t>> = 0,5 detik	OCR Is = 5,00 A ✓ Tap = 1,00 x IN ✓ TMS = 0,25 (SI) ✓ OCR High Set I>> = 3,5 x IN ✓ t>> = 0,4 detik ✓ GFR Is = 1,75 A ✓ Tap = 0,35 x IN ✓ TMS = 0,45 (SI) ✓ GFR High set I>> = 3,0 x IN ✓ t>> = 0,4 detik ✓

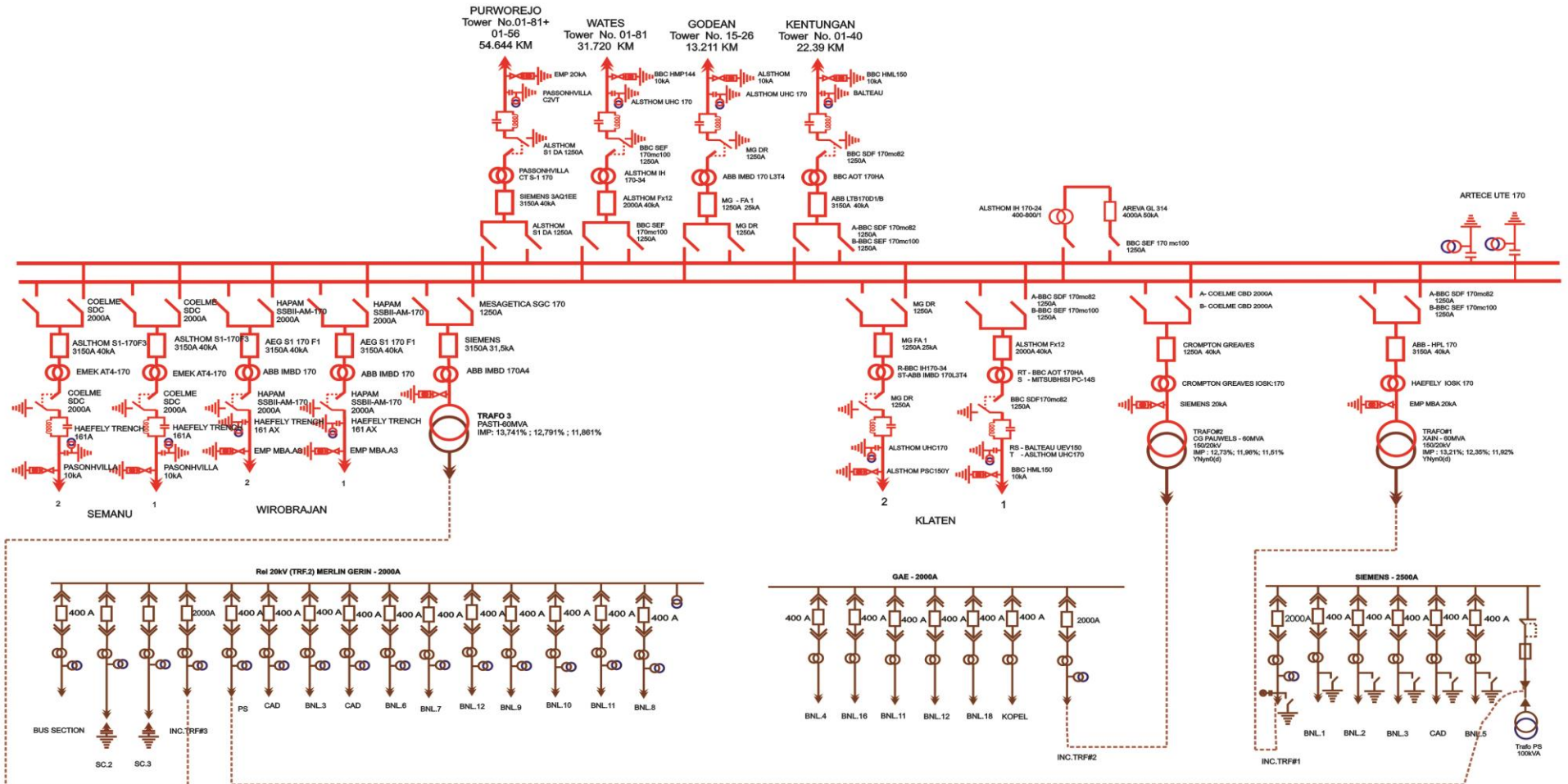
Kabel AAAC berdasarkan SPLN 64:1985

2.1.1 Tabel XIII A - Penghantar AAC

Penampang nominal (mm ²)	Jari-jari (mm)	Urat	GMR (mm)	Impedansi urutan positif (Ω /km)	Impedansi urutan nol (Ω /km)
16	2,2563	7	1,6380	1,8382+j 0,4035	1,9862+j 1,6910
25	2,8203	7	2,0475	1,1765+j 0,3895	1,3245+j 1,6770
35	3,3371	7	2,4227	0,8403+j 0,3791	0,9883+j 1,6666
50	3,9886	7	2,8957	0,5882+j 0,3677	0,7362+j 1,6552
70	4,7193	7	3,4262	0,4202+j 0,3572	0,5682+j 1,6447
95	5,4979	19	4,1674	0,3096+j 0,3464	0,4576+j 1,6339
120	6,1791	19	4,6837	0,2451+j 0,3375	0,3931+j 1,6250
150	6,9084	19	5,2365	0,1961+j 0,3305	0,3441+j 1,6180
185	7,6722	19	5,8155	0,1590+j 0,3239	0,3070+j 1,6114
240	8,7386	19	6,6238	0,1225+j 0,3157	0,2705+j 1,6032

2.1.2 Tabel XIII B - Penghantar AAAC

Penampang nominal (mm ²)	Jari-jari (mm)	Urat	GMR (mm)	Impedansi urutan positif (Ω /km)	Impedansi urutan nol (Ω /km)
16	2,2563	7	1,6380	2,0161+j 0,4036	2,1641+j 1,6911
25	2,8203	7	2,0475	1,2903+j 0,3895	1,4384+j 1,6770
35	3,3371	7	2,4227	0,9217+j 0,3790	1,0697+j 1,6665
50	3,9886	7	2,8957	0,6452+j 0,3678	0,7932+j 1,6553
70	4,7193	7	3,4262	0,4608+j 0,3572	0,6088+j 1,6447
95	5,4979	19	4,1674	0,3396+j 0,3449	0,4876+j 1,6324
120	6,1791	19	4,6837	0,2688+j 0,3376	0,4168+j 1,6251
150	6,9084	19	5,2365	0,2162+j 0,3305	0,3631+j 1,6180
185	7,6722	19	5,8155	0,1744+j 0,3239	0,3224+j 1,6114
240	8,7386	19	6,6238	0,1344+j 0,3158	0,2824+j 1,6033



 PT PLN (Persero) TRANSMISI JAWA BAGIAN TENGAH AREA PELAKSANA PEMELIHARAAN SALATIGA GI 150 kV BANTUL				
Tanggal	Digambar	Diperiksa	Disetujui	Revisi
07-08-2017	LINDAL	DEVY M	ANDRY D. S.	04