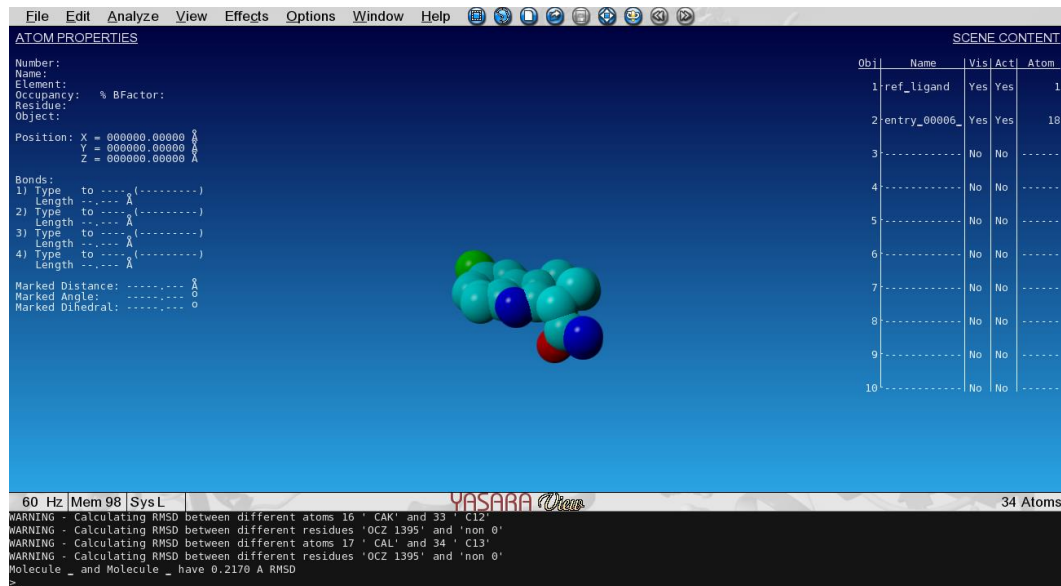


LAMPIRAN

Lampiran 1. RMSD dan Skor Penambatan Ligan Asli



```
zephyrus@zephyrus-K43BY: ~/Docking/results
zephyrus@zephyrus-K43BY:~/Docking$ cd results
zephyrus@zephyrus-K43BY:~/Docking/results$ more bestranking.csv
TOTAL_SCORE,SCORE_RB_PEN,SCORE_NORM_HEVATOMS,SCORE_NORM_CRT_HEVATOMS,SCORE_NORM_WEIGHT,SCORE_NORM_CRT_WEIGHT,SCORE_RB_PEN_NORM_CRT_HEVATOMS,SCORE_NORM_CONTACT,EVAL,TIME
NAD-DEPENDENT PROTEIN DEACETYLASE SIRTUIN-3,_entry_00001_conf_01,-90.07,-86.07,-5.29823,-35.0292,-0.362158,-14.3225,-33.4736,-5.00389,919191,7.82
NAD-DEPENDENT PROTEIN DEACETYLASE SIRTUIN-3,_entry_00002_conf_01,-89.2344,-85.2344,-5.24908,-34.7043,-0.358798,-14.1896,-33.1486,-4.95747,938062,8.112
NAD-DEPENDENT PROTEIN DEACETYLASE SIRTUIN-3,_entry_00003_conf_01,-88.6833,-84.6833,-5.21667,-34.4899,-0.356582,-14.102,-32.9343,-4.92685,928900,9.292
NAD-DEPENDENT PROTEIN DEACETYLASE SIRTUIN-3,_entry_00004_conf_01,-88.4225,-84.4225,-5.20132,-34.3885,-0.355533,-14.0605,-32.8328,-4.91236,931777,9.972
NAD-DEPENDENT PROTEIN DEACETYLASE SIRTUIN-3,_entry_00005_conf_01,-89.8948,-85.8948,-5.28793,-34.9611,-0.361453,-14.2947,-33.4054,-4.73131,931310,9.876
NAD-DEPENDENT PROTEIN DEACETYLASE SIRTUIN-3,_entry_00006_conf_01,-90.7912,-86.7912,-5.34066,-35.3097,-0.365058,-14.4372,-33.7541,-4.77849,959036,10.268
NAD-DEPENDENT PROTEIN DEACETYLASE SIRTUIN-3,_entry_00007_conf_01,-89.6297,-85.6297,-5.27234,-34.858,-0.360387,-14.2525,-33.3023,-4.97943,938690,10.008
NAD-DEPENDENT PROTEIN DEACETYLASE SIRTUIN-3,_entry_00008_conf_01,-88.2809,-84.2809,-5.19299,-34.3334,-0.354964,-14.038,-32.7778,-4.90449,939186,10.092
NAD-DEPENDENT PROTEIN DEACETYLASE SIRTUIN-3,_entry_00009_conf_01,-89.0679,-85.0679,-5.23929,-34.6395,-0.358128,-14.1632,-33.0839,-4.94822,949991,10.116
zephyrus@zephyrus-K43BY:~/Docking/results$
```

Lampiran 2. Skor Penambatan Perwakilan Senyawa Marker Terbaik

```

zephyrus@zephyrus-K43BY:~/Docking$ cd results
zephyrus@zephyrus-K43BY:~/Docking/results$ more bestranking.csv
TOTAL_SCORE,SCORE_RB_PEN,SCORE_NORM_HEVATOMS,SCORE_NORM_CRT_HEVATOMS,SCORE_NORM_WEIGHT,SCORE_NORM_CRT_WEIGHT,SCORE_RB_PEN_NORM_CRT_HEVATOMS,SCORE_NORM_CONTACT, EVAL, TIME
6. Rimpang Jahe Merah (n=10).cdx_entry_00001_conf_01,-105.044,-73.0437,-4.04014,-35.4578,-0.291369,-14.7591,-24.6561,-3.89051,11135397,233.456
6. Rimpang Jahe Merah (n=10).cdx_entry_00002_conf_01,-103.709,-71.7088,-3.9888,-35.0072,-0.287666,-14.5716,-24.2055,-3.9888,11585280,371.428
6. Rimpang Jahe Merah (n=10).cdx_entry_00003_conf_01,-102.574,-70.5738,-3.94515,-34.6241,-0.284518,-14.4121,-23.8224,-3.79903,11965580,501.472
6. Rimpang Jahe Merah (n=10).cdx_entry_00004_conf_01,-105.703,-73.7031,-4.06551,-35.6804,-0.293198,-14.8518,-24.8787,-3.91493,12384692,519.308
6. Rimpang Jahe Merah (n=10).cdx_entry_00005_conf_01,-102.838,-70.8379,-3.95531,-34.7133,-0.285251,-14.4492,-23.9116,-3.95531,11774699,492.068
6. Rimpang Jahe Merah (n=10).cdx_entry_00006_conf_01,-100.147,-68.1471,-3.85181,-33.805,-0.277787,-14.0711,-23.0033,-3.70915,11652089,489.336
6. Rimpang Jahe Merah (n=10).cdx_entry_00007_conf_01,-101.975,-69.9749,-3.92211,-34.422,-0.282857,-14.328,-23.6203,-3.77685,11504581,482.72
6. Rimpang Jahe Merah (n=10).cdx_entry_00008_conf_01,-104.648,-72.6476,-4.02491,-35.3241,-0.29027,-14.7035,-24.5224,-4.02491,12094114,505.184
6. Rimpang Jahe Merah (n=10).cdx_entry_00009_conf_01,-102.816,-70.816,-3.95446,-34.7059,-0.28519,-14.4461,-23.9042,-3.95446,11236318,470.22
zephyrus@zephyrus-K43BY:~/Docking/results$

```

```

zephyrus@zephyrus-K43BY:~/Docking/results
zephyrus@zephyrus-K43BY:~/Docking$ cd results
zephyrus@zephyrus-K43BY:~/Docking/results$ more bestranking.csv
TOTAL_SCORE,SCORE_RB_PEN,SCORE_NORM_HEVATOMS,SCORE_NORM_CRT_HEVATOMS,SCORE_NORM_WEIGHT,SCORE_NORM_CRT_WEIGHT,SCORE_RB_PEN_NORM_CRT_HEVATOMS,SCORE_NORM_CONTACT, EVAL, TIME
4. Buah Cabe Jawa.cdx_entry_00001_conf_01,-87.0367,-79.0367,-4.1446,-31.5473,-0.305037,-13.2206,-28.6476,-4.1446,1752010,20.876
4. Buah Cabe Jawa.cdx_entry_00002_conf_01,-87.756,-79.756,-4.17886,-31.808,-0.307558,-13.3299,-28.9084,-4.17886,1718775,20.684
4. Buah Cabe Jawa.cdx_entry_00003_conf_01,-87.3045,-79.3045,-4.15736,-31.6444,-0.305975,-13.2613,-28.7447,-4.15736,1691017,20.704
4. Buah Cabe Jawa.cdx_entry_00004_conf_01,-88.2005,-80.2005,-4.20003,-31.9692,-0.309116,-13.3974,-29.0695,-4.20003,1707160,21.196
4. Buah Cabe Jawa.cdx_entry_00005_conf_01,-86.8774,-78.8774,-4.13702,-31.4896,-0.304478,-13.1964,-28.5899,-4.13702,1703963,20.664
4. Buah Cabe Jawa.cdx_entry_00006_conf_01,-86.4224,-78.4224,-4.11535,-31.3247,-0.302884,-13.1273,-28.425,-4.11535,1769267,21.608
4. Buah Cabe Jawa.cdx_entry_00007_conf_01,-89.4516,-81.4516,-4.2596,-32.4226,-0.3135,-13.5875,-29.523,-4.2596,1765558,21.628
4. Buah Cabe Jawa.cdx_entry_00008_conf_01,-90.1175,-82.1175,-4.29131,-32.664,-0.315834,-13.6886,-29.7643,-4.29131,1710163,21.06
4. Buah Cabe Jawa.cdx_entry_00009_conf_01,-87.6094,-79.6094,-4.17188,-31.7549,-0.307044,-13.3076,-28.8552,-4.17188,1686078,21.052
zephyrus@zephyrus-K43BY:~/Docking/results$

```

```

zephyrus@zephyrus-K43BY: ~/Docking/results
zephyrus@zephyrus-K43BY:~/Docking$ cd results
zephyrus@zephyrus-K43BY:~/Docking/results$ more bestranking.csv
TOTAL_SCORE,SCORE_RB_PEN,SCORE_NORM_HEVATOMS,SCORE_NORM_CRT_HEVATOMS,SCORE_NORM_WEIGHT,SCORE_NORM_CRT_WEIGHT,SCORE_RB_PEN_NORM_CRT_HEVATOMS,SCORE_NORM_CONTACT,EVAL,TIME
23. Herba Meniran.cdx_entry_00001_conf_01,-79.5149,-53.5149,-2.6505,-25.5903,-0.189994,-10.6303,-17.2227,-2.6505,5705227,128.608
23. Herba Meniran.cdx_entry_00002_conf_01,-80.973,-54.973,-2.6991,-26.0595,-0.193478,-10.8252,-17.692,-2.6991,6634738,188.116
23. Herba Meniran.cdx_entry_00003_conf_01,-86.4326,-60.4326,-2.88109,-27.8166,-0.206524,-11.5551,-19.449,-2.88109,6538042,184.996
23. Herba Meniran.cdx_entry_00004_conf_01,-89.7129,-63.7129,-2.99043,-28.8723,-0.214362,-11.9937,-20.5047,-2.99043,6251815,179.592
23. Herba Meniran.cdx_entry_00005_conf_01,-81.8312,-55.8312,-2.72771,-26.3357,-0.195529,-10.94,-17.9681,-2.72771,6520975,185.252
23. Herba Meniran.cdx_entry_00006_conf_01,-85.4498,-59.4498,-2.84833,-27.5003,-0.204175,-11.4237,-19.1327,-2.84833,6663621,188.348
23. Herba Meniran.cdx_entry_00007_conf_01,-82.1391,-56.1391,-2.73797,-26.4348,-0.196265,-10.9811,-18.0672,-2.73797,6484205,184.964
23. Herba Meniran.cdx_entry_00008_conf_01,-86.0854,-60.0854,-2.86951,-27.7048,-0.205694,-11.5087,-19.3373,-2.86951,5715815,161.328
23. Herba Meniran.cdx_entry_00009_conf_01,-84.055,-58.055,-2.80183,-27.0514,-0.200843,-11.2373,-18.6838,-2.80183,6027312,171.496
zephyrus@zephyrus-K43BY:~/Docking/results$

```

```

zephyrus@zephyrus-K43BY: ~/Docking/results
zephyrus@zephyrus-K43BY:~/Docking$ cd results
zephyrus@zephyrus-K43BY:~/Docking/results$ more bestranking.csv
TOTAL_SCORE,SCORE_RB_PEN,SCORE_NORM_HEVATOMS,SCORE_NORM_CRT_HEVATOMS,SCORE_NORM_WEIGHT,SCORE_NORM_CRT_WEIGHT,SCORE_RB_PEN_NORM_CRT_HEVATOMS,SCORE_NORM_CONTACT,EVAL,TIME
36. Rimpang Temulawak.cdx_entry_00001_conf_01,-84.5678,-74.5678,-5.28549,-33.5608,-0.387347,-14.0444,-29.5922,-4.97458,1957830,18.168
36. Rimpang Temulawak.cdx_entry_00002_conf_01,-83.9023,-73.9023,-5.2439,-33.2967,-0.384299,-13.9339,-29.3282,-5.2439,2000698,18.776
36. Rimpang Temulawak.cdx_entry_00003_conf_01,-86.2055,-76.2055,-5.38785,-34.2107,-0.394848,-14.3164,-30.2422,-5.07091,1986770,18.512
36. Rimpang Temulawak.cdx_entry_00004_conf_01,-83.8042,-73.8042,-5.23776,-33.2577,-0.383849,-13.9176,-29.2892,-4.92966,1924211,18.04
36. Rimpang Temulawak.cdx_entry_00005_conf_01,-84.7151,-74.7151,-5.29469,-33.6192,-0.388021,-14.0689,-29.6507,-4.98324,1943128,18.396
36. Rimpang Temulawak.cdx_entry_00006_conf_01,-84.6718,-74.6718,-5.29199,-33.602,-0.387823,-14.0617,-29.6335,-4.98069,1939189,18.224
36. Rimpang Temulawak.cdx_entry_00007_conf_01,-84.729,-74.729,-5.29556,-33.6247,-0.388085,-14.0712,-29.6562,-4.98406,1972786,18.156
36. Rimpang Temulawak.cdx_entry_00008_conf_01,-85.9467,-75.9467,-5.37167,-34.108,-0.393662,-14.2734,-30.1395,-5.05569,1936020,18.264
36. Rimpang Temulawak.cdx_entry_00009_conf_01,-82.7208,-72.7208,-5.17005,-32.8278,-0.378887,-13.7377,-28.8593,-4.86593,1994317,18.504
zephyrus@zephyrus-K43BY:~/Docking/results$

```

Lampiran 3. Skor Penambatan Senyawa Pembeding

```

zephyrus@zephyrus-K43BY: ~/Docking/results
zephyrus@zephyrus-K43BY:~/Docking$ cd results
zephyrus@zephyrus-K43BY:~/Docking/results$ more bestranking.csv
TOTAL_SCORE,SCORE_RB_PEN,SCORE_NORM_HEVATOMS,SCORE_NORM_CRT_HEVATOMS,SCORE_NORM_WEIGHT,SCORE_NORM_CRT_WEIGHT,SCORE_RB_PEN_NORM_CRT_HEVATOMS,SCORE_NORM_CONTACT,EVAL,TIME
NAD-DEPENDENT PROTEIN DEACETYLASE SIRTUIN-3,entry_00001_conf_01,-90.07,-86.07,-5.29823,-35.0292,-0.362158,-14.3225,-33.4736,-5.00389,919191,7.82
NAD-DEPENDENT PROTEIN DEACETYLASE SIRTUIN-3,entry_00002_conf_01,-89.2344,-85.2344,-5.24908,-34.7043,-0.358798,-14.1896,-33.1486,-4.95747,938062,8.112
NAD-DEPENDENT PROTEIN DEACETYLASE SIRTUIN-3,entry_00003_conf_01,-88.6833,-84.6833,-5.21667,-34.4899,-0.356582,-14.102,-32.9343,-4.92685,928900,9.292
NAD-DEPENDENT PROTEIN DEACETYLASE SIRTUIN-3,entry_00004_conf_01,-88.4225,-84.4225,-5.20132,-34.3885,-0.355533,-14.0605,-32.8328,-4.91236,931777,9.972
NAD-DEPENDENT PROTEIN DEACETYLASE SIRTUIN-3,entry_00005_conf_01,-89.8948,-85.8948,-5.28793,-34.9611,-0.361453,-14.2947,-33.4054,-4.73131,931310,9.876
NAD-DEPENDENT PROTEIN DEACETYLASE SIRTUIN-3,entry_00006_conf_01,-90.7912,-86.7912,-5.34066,-35.3097,-0.365058,-14.4372,-33.7541,-4.77849,959030,10.268
NAD-DEPENDENT PROTEIN DEACETYLASE SIRTUIN-3,entry_00007_conf_01,-89.6297,-85.6297,-5.27234,-34.858,-0.360387,-14.2525,-33.3023,-4.97943,938690,10.008
NAD-DEPENDENT PROTEIN DEACETYLASE SIRTUIN-3,entry_00008_conf_01,-88.2809,-84.2809,-5.19299,-34.3334,-0.354964,-14.038,-32.7778,-4.90449,939186,10.092
NAD-DEPENDENT PROTEIN DEACETYLASE SIRTUIN-3,entry_00009_conf_01,-89.0679,-85.0679,-5.23929,-34.6395,-0.358128,-14.1632,-33.0839,-4.94822,949991,10.116
zephyrus@zephyrus-K43BY:~/Docking/results$

```

Skor Ligan Asli 4BVB

```

Terminal
argevollen@argevollen-Satellite-L645 ~/docking $ cd results
argevollen@argevollen-Satellite-L645 ~/docking/results $ more bestranking.csv
TOTAL_SCORE,SCORE_RB_PEN,SCORE_NORM_HEVATOMS,SCORE_NORM_CRT_HEVATOMS,SCORE_NORM_WEIGHT,SCORE_NORM_CRT_WEIGHT,SCORE_RB_PEN_NORM_CRT_HEVATOMS,SCORE_NORM_CONTACT,EVAL,TIME
entry_00001_conf_01,-69.8246,-63.8246,-3.32498,-25.3086,-0.246514,-10.6321,-23.1339,-3.17384,1427002,7.816
entry_00002_conf_01,-70.5626,-64.5626,-3.36012,-25.5761,-0.24912,-10.7445,-23.4014,-3.20739,1433018,7.84
entry_00003_conf_01,-68.1799,-62.1799,-3.24666,-24.7125,-0.240707,-10.3817,-22.5377,-3.09908,1418114,7.756
entry_00004_conf_01,-68.7123,-62.7123,-3.27201,-24.9055,-0.242587,-10.4627,-22.7307,-3.12329,1409361,7.636
entry_00005_conf_01,-70.1322,-64.1322,-3.33963,-25.4201,-0.2476,-10.6789,-23.2454,-3.18783,1431476,7.824
entry_00006_conf_01,-68.2334,-62.2334,-3.24921,-24.7319,-0.240896,-10.3898,-22.5571,-3.10152,1374431,7.488
entry_00007_conf_01,-69.4421,-63.4421,-3.30677,-25.17,-0.245164,-10.5739,-22.9952,-3.15646,1435349,7.852
entry_00008_conf_01,-69.3655,-63.3655,-3.30312,-25.1422,-0.244893,-10.5622,-22.9675,-3.15298,1397773,7.664
entry_00009_conf_01,-69.8235,-63.8235,-3.32493,-25.3082,-0.24651,-10.6319,-23.1335,-3.1738,1411850,7.692
argevollen@argevollen-Satellite-L645 ~/docking/results $

```

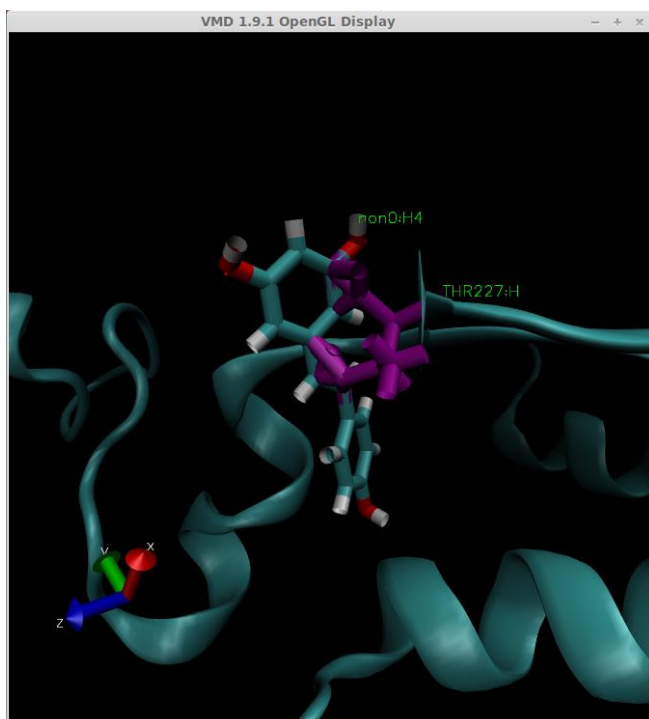
Skor Resveratrol

```

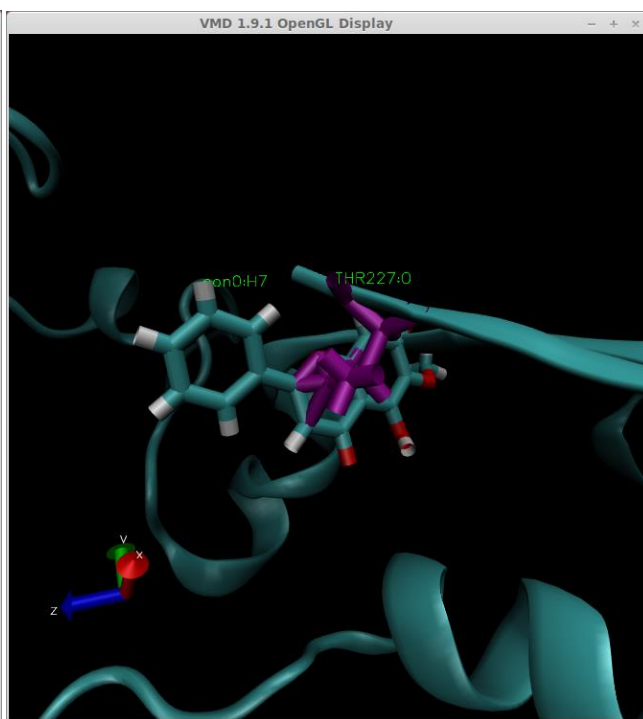
Terminal
argevollen@argevollen-Satellite-L645 ~/docking/Resveratrol/results $ more bestranking.csv
TOTAL_SCORE,SCORE_RB_PEN,SCORE_NORM_HEVATOMS,SCORE_NORM_CRT_HEVATOMS,SCORE_NORM_WEIGHT,SCORE_NORM_CRT_WEIGHT,SCORE_RB_PEN_NORM_CRT_HEVATOMS,SCORE_NORM_CONTACT,EVAL,TIME
entry_00001_conf_01,-77.8489,-67.8489,-4.57935,-30.2763,-0.341089,-12.7387,-26.3872,-4.09731,1719514,9.272
entry_00002_conf_01,-77.4266,-67.4266,-4.5545,-30.1121,-0.339239,-12.6696,-26.2229,-4.07508,1781911,9.4
entry_00003_conf_01,-77.5342,-67.5342,-4.56083,-30.1539,-0.339711,-12.6872,-26.2648,-4.08075,1732070,9.18
entry_00004_conf_01,-77.6678,-67.6678,-4.56869,-30.2059,-0.340296,-12.709,-26.3168,-4.08778,1785221,9.452
entry_00005_conf_01,-77.4617,-67.4617,-4.55657,-30.1257,-0.339393,-12.6753,-26.2366,-4.07693,1741054,9.232
entry_00006_conf_01,-77.347,-67.347,-4.54982,-30.0811,-0.338891,-12.6566,-26.192,-4.0709,1704562,9.016
entry_00007_conf_01,-77.8624,-67.8624,-4.58014,-30.2815,-0.341149,-12.7409,-26.3924,-4.09802,1744161,9.236
entry_00008_conf_01,-78.169,-68.169,-4.59818,-30.4008,-0.342492,-12.7911,-26.5117,-4.11416,1736609,9.144
entry_00009_conf_01,-78.2063,-68.2063,-4.60037,-30.4153,-0.342655,-12.7972,-26.5262,-4.11612,1802508,9.516
argevollen@argevollen-Satellite-L645 ~/docking/Resveratrol/results $

```

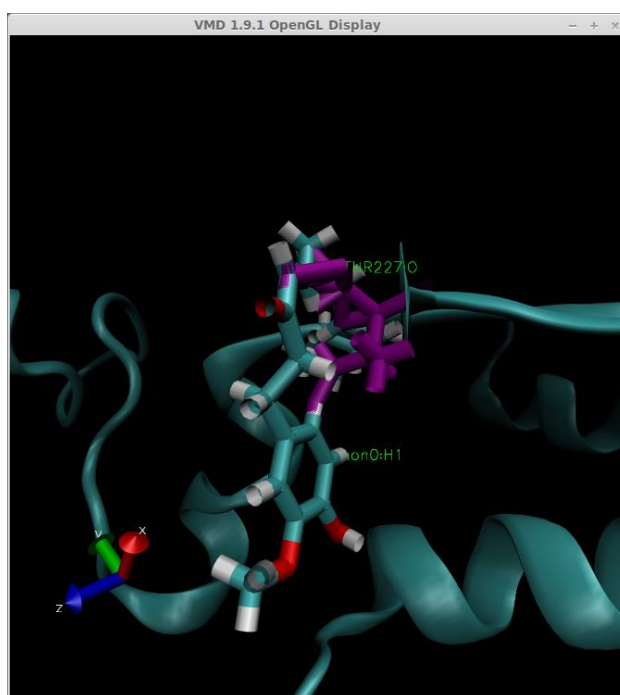
Skor Oroxylin A

Lampiran 4. Visualisasi Senyawa Pembanding dan Perwakilan Senyawa *Marker* Terbaik

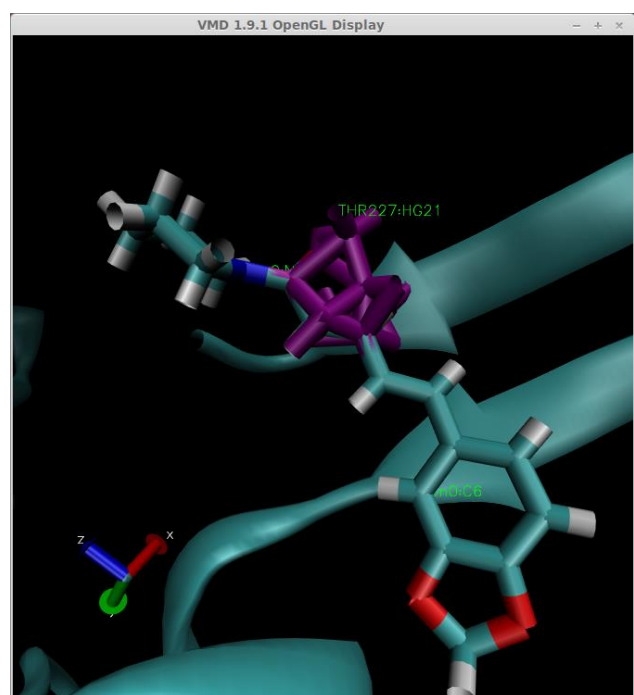
Resveratrol



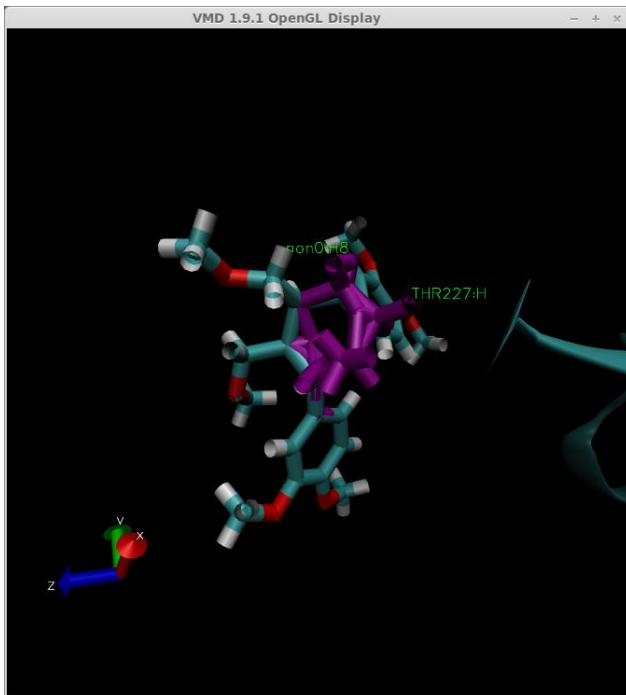
Oroxylin A



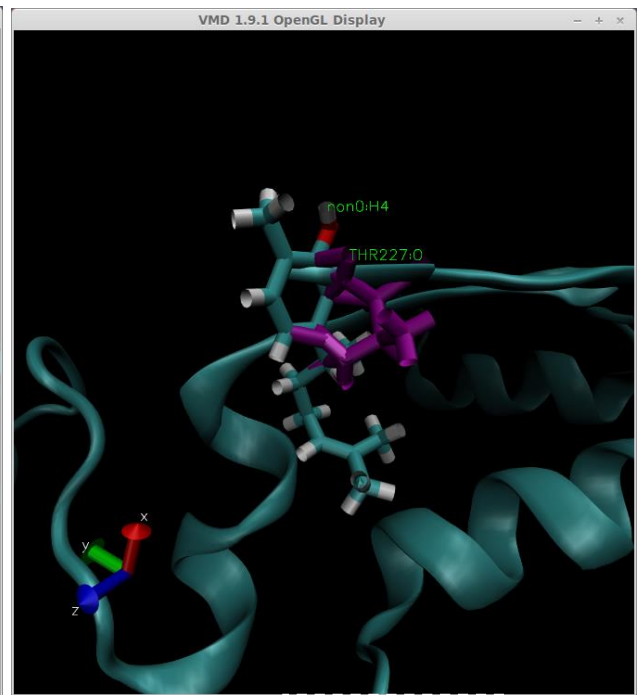
Shogaol



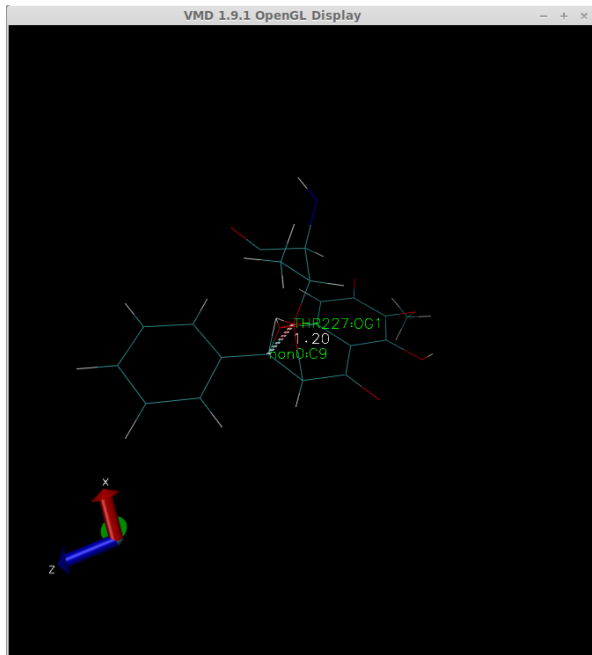
Piperin



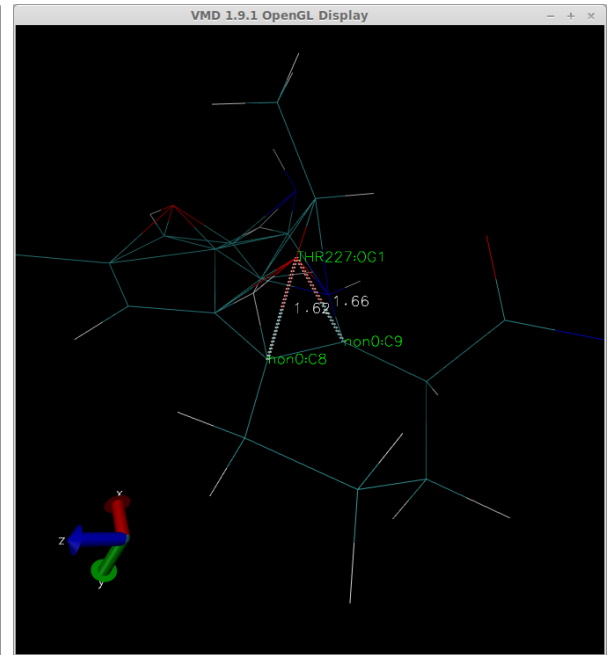
Filantin



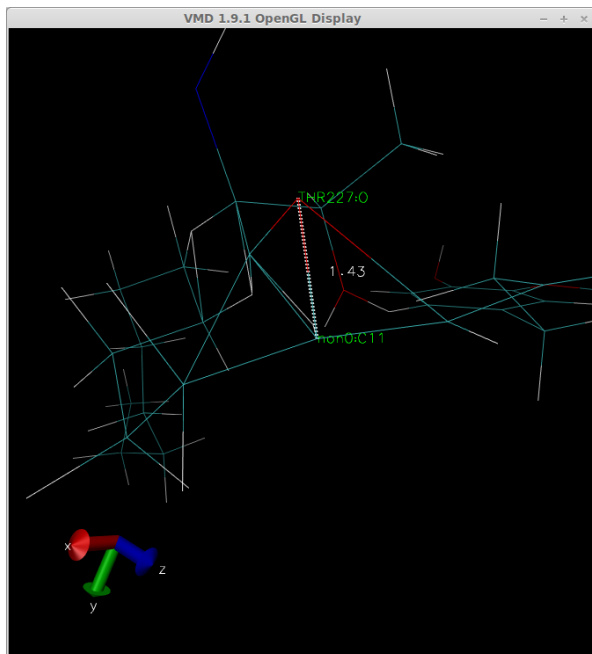
Xantorizol

Lampiran 5. Ikatan Ligan-Reseptor Hasil Penambatan

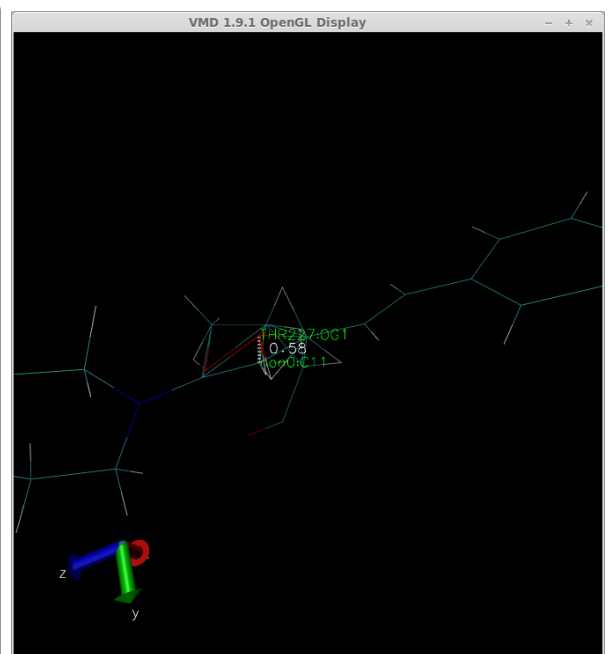
Oroxylin A



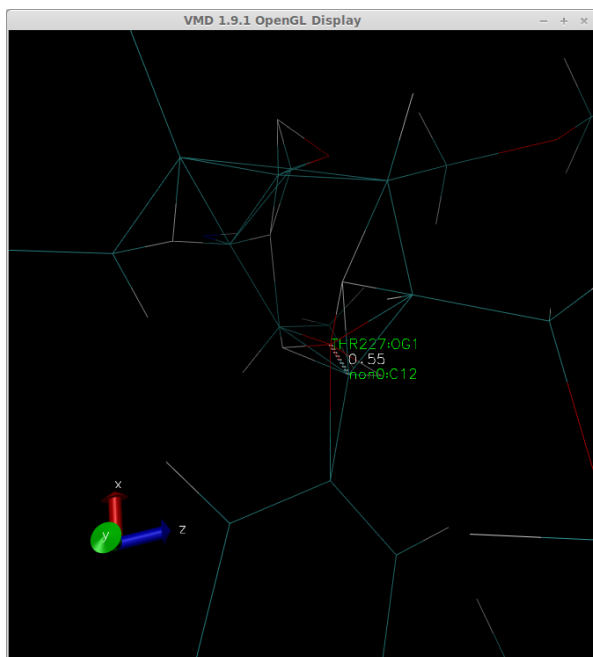
OCZ (Ligan Asli)



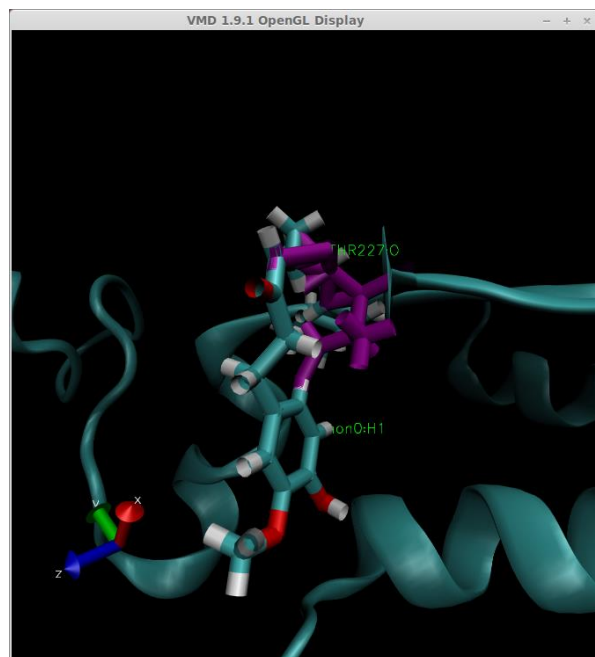
Shogaol



Piperin



Filantin



Xanthorizol

Lampiran 6. Data Hasil Penambatan Molekul Senyawa *Marker*

No	Nama	Nama Latin	Nama Senyawa	Golongan Senyawa	Score	Entry
1	Buah Adas	<i>Foeniculi vulgaris fructus</i>	Trans-Anetol	Minyak Atsiri	-66.564	8
2	Umbi Lapis Bawang Putih	<i>Alii sativi Bulbus</i>	Alisin	Dialil sulfida	-54.393	3
3	Rimpang Bengle	<i>Zingiberis purpurei rhizoma</i>	Terpinen-4-ol	Minyak atsiri	-61.938	1
4	Cabe Jawa	<i>Piperis retrofracti fructus</i>	Piperin	Alkaloid	-90.118	8
5	Gambir	<i>Uncariae gambirisi folii extractum siccum</i>	[+] Katekin	Flavonoid	-83.645	3
6	Rimpang Jahe Merah (n=4)	<i>Zingiberis officinalis Var. Rubrum Rhizoma</i>	Shogaol	Fenolik	-88.697	9
7	Rimpang Jahe Merah (n=6)	<i>Zingiberis officinalis Var. Rubrum Rhizoma</i>	Shogaol	Fenolik	-92.169	2
8	Rimpang Jahe Merah (n=8)	<i>Zingiberis officinalis Var. Rubrum Rhizoma</i>	Shogaol	Fenolik	-100.81	3
9	Rimpang Jahe Merah (n=10)	<i>Zingiberis officinalis Var. Rubrum Rhizoma</i>	Shogaol	Fenolik	-105.7	4
10	Rimpang Jahe (n=4)	<i>Zingiberis officinalis Var. Rubrum Rhizoma</i>	Shogaol	Fenolik	-88.697	9
11	Rimpang Jahe (n=6)	<i>Zingiberis officinalis Var. Rubrum Rhizoma</i>	Shogaol	Fenolik	-92.169	2
12	Rimpang Jahe (n=8)	<i>Zingiberis officinalis Var. Rubrum Rhizoma</i>	Shogaol	Fenolik	-100.81	3

13	Rimpang Jahe (n=10)	<i>Zingiberis officinalis</i> Var. <i>Rubrum Rhizoma</i>	Shogaol	Fenolik	-105.7	4
14	Daun Jambu Biji	<i>Psidii guajavae Folium</i>	Kuersetin	Flavonoid	-78.314	8
15	Daun Jati Belanda	<i>Guazumae ulmifoliae Folium</i>	Tilirosida	Flavonoid	-74.503	1
16	Kulit Kayu Manis	<i>Cinnamomi burmani Cortex</i>	Sinamaldehyd	Minyak atsiri	-66.97	1
17	Buah Kayu Putih	<i>Melaleucaeleucandrae fructus</i>	Sineol	Minyak Atsiri	-62.713	1
18	Buah Kemukus	<i>Piperis cubebae fructus</i>	Kubebin	Fenolik	-96.417	3
19	Rimpang Kencur	<i>Kaempferiae galangae rhizome</i>	Etil p-metoksinamat	Sinamat	-75.59	3
20	Daun Kenikir	<i>Cosmosis caudati folium</i>	Isokuersetin	Flavonoid	-73.459	6
21	Kulit Batang Kragean	<i>Litsea cubebae cortex</i>	Sineol	Minyak Atsiri	-62.71	1
22	Daun Kumis Kucing	<i>Orthosiphonis staminei folium</i>	Sinensetin	Flavonoid	-34.878	4
23	Rimpang Kunyit	<i>Curcumae domesticae rhizoma</i>	Kurkumin	Fenolik	-87.468	8
24	Daun Legundi	<i>Vitidis trifoliae folium</i>	Viteksikarpin	Flavonoid	-46.575	7
25	Rimpang Lengkuas	<i>Alpiniae galangae rhizoma</i>	Galangin	Flavonoid	-82.776	1
26	Daun Lidah Buaya	<i>Aloe verae folium</i>	Aloin A	Fenolik	-88.348	4
27	Daging Buah Mahkota Dewa	<i>Phaleriae macrocarpae pericarpium</i>	Falerin	Fenolik	-89.076	3
28	Buah Mengkudu	<i>Morindae citrifoliae fructus</i>	Skopoletin	Fenolik	-69.471	8

29	Herba Meniran	<i>Phyllanthi niruri herba</i>	Filantin	Flavonoid	-89.713	4
30	Biji Pala	<i>Myristiciae fragransis semen</i>	Miristisin		-71.295	9
31	Herba Patikan Cina	<i>Euphorbiae prostratae herba</i>	Kuersetin	Flavonoid	-78.317	8
32	Kulit Pule	<i>Alsotinae scholaridis cortex</i>	Tetrahidroalstonin	Alkaloid	-80.666	1
33	Daun Salam	<i>Syzygii polyanthi folium</i>	Kuersetin	Flavonoid	-82.891	3
34	Herba Sambiloto	<i>Andrographidis paniculatae herba</i>	Andrografolid	Terpenoid	-76.517	6
35	Daun Sembung	<i>Blumae balsamiferae folium</i>	Kuersetin	Flavonoid	-78.31	8
36	Daun Tapak Liman	<i>Elephantopi scaberi folium</i>	Isodeoksi-elefantopin		-70.329	5
37	Rimpang Teki	<i>Cyperi rotundi rhizoma</i>	Sineol	Minyak atsiri	-62.713	1
38	Daun Tempuyung	<i>Sonchi arvensidis folium</i>	Luteolin	Flavonoid	-76.013	9
39	Rimpang Temu Giring	<i>Curcumae heyneanae rhizoma</i>	Kurkumin	Fenolik	-88.212	8
40	Rimpang Temu Kunci	<i>Boesenbergiae rhizoma</i>	Pinostrobin	Flavonoid	-88.492	9
41	Rimpang Temulawak	<i>Curcuma Xanthorrhizae rhizoma</i>	Xantorizol	Terpenoid	-86.206	3
42	Ekstrak Kental Rimpang Temu Mangga	<i>Curcumae manggae rhizomae extractum spissum</i>	Kurkumangosida	Fenolik	-43.49	6
43	Buah Anyang-anyang	<i>Elaeocarpi grandifleri fructus</i>	Katekin	Flavonoid	-83.971	3

44	Herba Bandotan	<i>Agerati conyzoidii herbae</i>	Nobiletin	Flavonoid	3.6971	7
45	Ekstrak Kental Umbi Lapis Bawang Putih	<i>Alii sativi bulbi extractum spissum</i>	Alisin	Dialil sulfida	-55.74	4
46	Daun Bayam Duri	<i>Amaranthi spinosi folium</i>	Rutin	Flavonoid	-61.776	5
47	Herba Benalu	<i>Scurrulae atropurpureae herba</i>	Kuersetin	Flavonoid	-78.143	2
48	Daun Binahong	<i>Anrederae scandensis folium</i>	2,4-dihidroksi-6-metoksi-5-formil-3-metilalkon	Flavonoid	-72.551	8
49	Daun Gandapura	<i>Gaultheriae fragrantissimae folium</i>	Metil Salisilat	Aldehyd	-70.352	7
50	Rambut Jagung	<i>Zea maydis stigmae</i>	Stigmasterol	Steroid	-75.622	4
51	Kulit Batang Jamblang	<i>Eugenia cumini cortex</i>	Asam Galat	Fenolik	-70.304	9
52	Kulit Buah Jeruk Nipis	<i>Citri aurantifoliae pericarpium</i>	Hesperidin	Flavonoid	-69.706	8
53	Bunga Kecombra ng	<i>Nicolaiae speciosae flos</i>	Rutin	Flavonoid	-59.878	5
54	Daun Kemuning	<i>Murrayae paniculatae folium</i>	Murangatin	Fenolik	-76.617	9
55	Bunga Krisan	<i>Chrysanthemi morifolli flos</i>	Mirisetin	Flavonoid	-76.551	2
56	Herba Patikan Kebo	<i>Euphorbiae hirtae herba</i>	Kuersetin	Flavonoid	-82.901	3
57	Buah Pisang Batu	<i>Musae brachycarpa fructus</i>	(+) Katekin	Flavonoid	-83.974	3

58	Bunga Rosela	<i>Hibisci sabdariffae Flos</i>	Sianoidin 3-O-glukosida	Flavonoid	-89.517	8
59	Daun Senggugu	<i>Clerodendri serrati folium</i>	Asam Oleanolat	Terpenoid	-29.078	8
60	Daun Sengitan	<i>Sambuci javanicae folium</i>	Rutin	Flavonoid	-58.436	4
61	Buah Seprantu	<i>Sindorae sumatranae fructus</i>	Stigmasterol	Steroid	-75.639	4
62	Herba Sidaguri	<i>Sidae rhombifoliae herbae</i>	20-Hidroksiekdis on	Fenolik	-41.738	2
63	Daun Tea	<i>Camelliae sinensidis folium</i>	(+) Katekin	Flavonoid	-83.971	3