

LAMPIRAN

Uji Normalitas

Explore

Spesimen

Case Processing Summary

Spesimen		Cases					
		Valid		Missing		Total	
		N	Percent	N	Percent	N	Percent
Kekuatan Transversal	YG H1	4	100.0%	0	.0%	4	100.0%
	YG H2	4	100.0%	0	.0%	4	100.0%
	YG H3	4	100.0%	0	.0%	4	100.0%
	AQ H1	4	100.0%	0	.0%	4	100.0%
	AQ H2	4	100.0%	0	.0%	4	100.0%
	AQ H3	4	100.0%	0	.0%	4	100.0%

Descriptives

Spesimen			Statistic	Std. Error	
Kekuatan Transversal	YG H1	Mean	69.2950	1.50405	
		95% Confidence Interval for Mean	Lower Bound	64.5085	
			Upper Bound	74.0815	
		5% Trimmed Mean	69.2933		
		Median	69.2800		
		Variance	9.049		
		Std. Deviation	3.00809		
		Minimum	65.81		
		Maximum	72.81		
		Range	7.00		
		Interquartile Range	5.83		
		Skewness	.024	1.014	
		Kurtosis	-1.138	2.619	
		YG H2	Mean	68.7275	10.81910
95% Confidence Interval for Mean	Lower Bound		34.2963		
	Upper Bound		1.0316E2		
5% Trimmed Mean	68.6067				
Median	67.6400				
Variance	468.211				
Std. Deviation	2.16382E1				

	Minimum		44.98	
	Maximum		94.65	
	Range		49.67	
	Interquartile Range		41.81	
	Skewness		.229	1.014
	Kurtosis		-1.570	2.619
YG H3	Mean		65.6350	4.49261
	95% Confidence Interval for Mean	Lower Bound	51.3375	
		Upper Bound	79.9325	
	5% Trimmed Mean		65.5283	
	Median		64.6750	
	Variance		80.734	
	Std. Deviation		8.98522	
	Minimum		56.74	
	Maximum		76.45	
	Range		19.71	
	Interquartile Range		17.14	
	Skewness		.397	1.014
	Kurtosis		-2.675	2.619
AQ H1	Mean		72.9550	2.55493
	95% Confidence Interval for Mean	Lower Bound	64.8241	
		Upper Bound	81.0859	
	5% Trimmed Mean		72.7672	
	Median		71.2650	
	Variance		26.111	
	Std. Deviation		5.10986	
	Minimum		69.17	
	Maximum		80.12	
	Range		10.95	
	Interquartile Range		9.14	
	Skewness		1.343	1.014
	Kurtosis		1.170	2.619
AQ H2	Mean		70.5375	3.10094
	95% Confidence Interval for Mean	Lower Bound	60.6689	
		Upper Bound	80.4061	
	5% Trimmed Mean		70.3361	
	Median		68.7250	
	Variance		38.463	

	Std. Deviation		6.20187	
	Minimum		65.20	
	Maximum		79.50	
	Range		14.30	
	Interquartile Range		10.75	
	Skewness		1.554	1.014
	Kurtosis		2.915	2.619
AQ H3	Mean		70.2475	1.12720
	95% Confidence Interval for Mean	Lower Bound	66.6603	
		Upper Bound	73.8347	
	5% Trimmed Mean		70.1994	
	Median		69.8150	
	Variance		5.082	
	Std. Deviation		2.25439	
	Minimum		67.99	
	Maximum		73.37	
	Range		5.38	
	Interquartile Range		4.09	
	Skewness		1.091	1.014
	Kurtosis		2.133	2.619

Tests of Normality

Spesimen	Kolmogorov-Smirnov ^a			Shapiro-Wilk		
	Statistic	df	Sig.	Statistic	df	Sig.
Kekuatan Transversal YG H1	.151	4	.	.994	4	.975
YG H2	.181	4	.	.984	4	.923
YG H3	.236	4	.	.943	4	.671
AQ H1	.257	4	.	.847	4	.217
AQ H2	.362	4	.	.840	4	.194
AQ H3	.306	4	.	.915	4	.511

a. Lilliefors Significance Correction

Uji Homogenitas

Oneway

Descriptives

Kekuatan Transversal

	N	Mean	Std. Deviation	Std. Error	95% Confidence Interval for Mean		Minimum	Maximum
					Lower Bound	Upper Bound		
YG H1	4	69.2950	3.00809	1.50405	64.5085	74.0815	65.81	72.81
YG H2	4	68.7275	21.63819	10.81910	34.2963	103.1587	44.98	94.65
YG H3	4	65.6350	8.98522	4.49261	51.3375	79.9325	56.74	76.45
AQ H1	4	72.9550	5.10986	2.55493	64.8241	81.0859	69.17	80.12
AQ H2	4	70.5375	6.20187	3.10094	60.6689	80.4061	65.20	79.50
AQ H3	4	70.2475	2.25439	1.12720	66.6603	73.8347	67.99	73.37
Total	24	69.5663	9.32375	1.90320	65.6292	73.5033	44.98	94.65

Test of Homogeneity of Variances

Kekuatan Transversal

Levene Statistic	df1	df2	Sig.
6.663	5	18	.001

ANOVA

Kekuatan Transversal

	Sum of Squares	df	Mean Square	F	Sig.
Between Groups	116.491	5	23.298	.223	.948
Within Groups	1882.951	18	104.608		
Total	1999.442	23			

NPar Tests

Descriptive Statistics

	N	Mean	Std. Deviation	Minimum	Maximum
Kekuatan Transversal	24	69.5662	9.32375	44.98	94.65
Spesimen	24	3.5000	1.74456	1.00	6.00

Kruskal-Wallis Test

Ranks

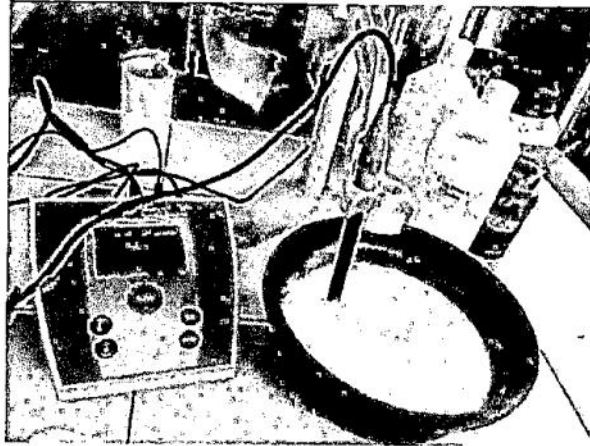
	Spesimen	N	Mean Rank
Kekuatan Transversal	YG H1	4	11.75
	YG H2	4	12.25
	YG H3	4	9.50
	AQ H1	4	16.25
	AQ H2	4	11.50
	AQ H3	4	13.75
	Total	24	

Test Statistics^{a,b}

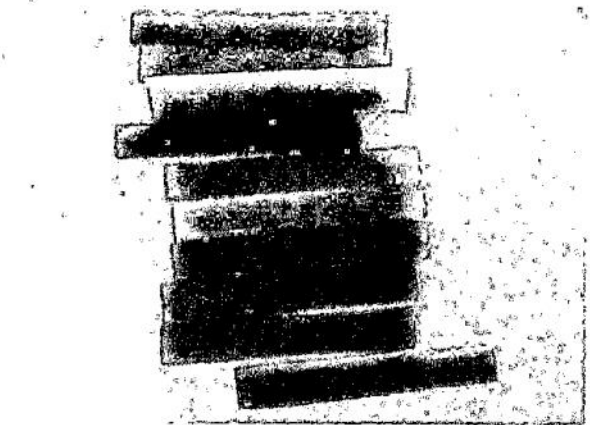
	Kekuatan Transversal
Chi-Square	2.100
df	5
Asymp. Sig.	.835

a. Kruskal Wallis Test

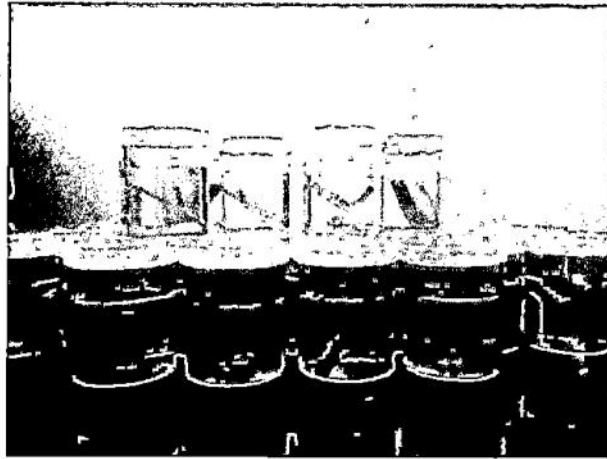
b. Grouping Variable: Spesimen

Foto Alat dan Bahan Penelitian

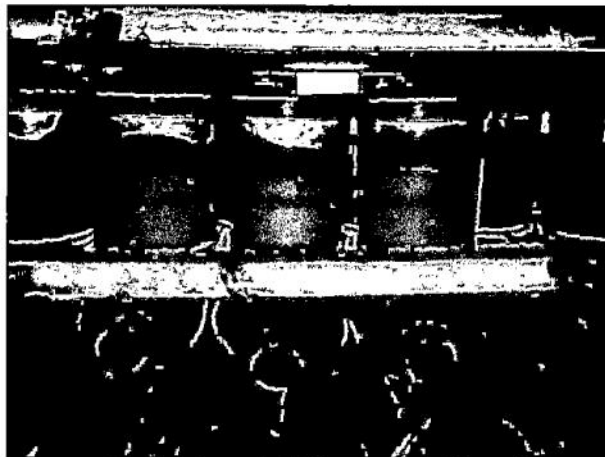
Pengukuran ph pada yoghurt menggunakan alat pengukur ph



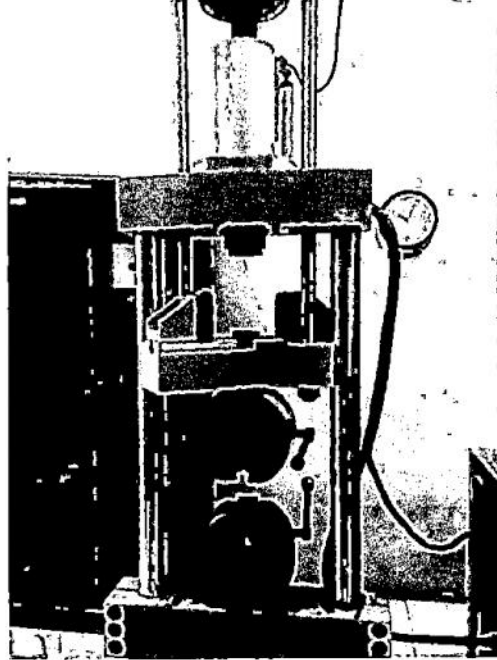
Spesimen lempeng resin akrilik *heat cured*



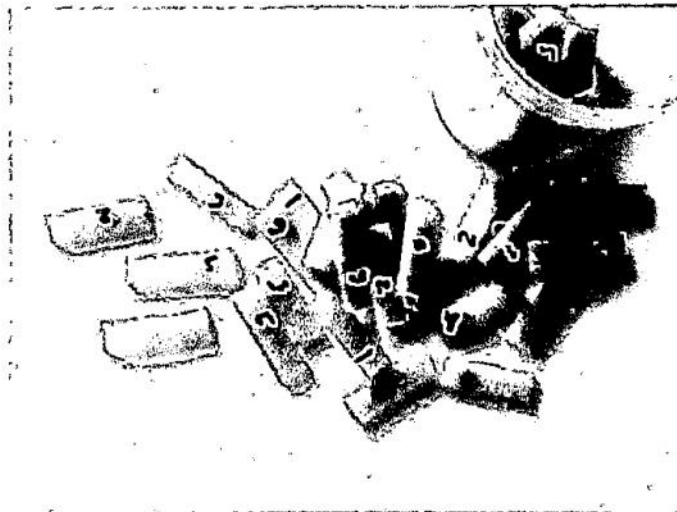
Perendaman resin akrilik *heat cured* pada
Aquades



Perendaman resin akrilik *heat cured* pada
yoghurt



Alat uji kekuatan transversal



Lempeng resin akrilik heat cured setelah
pengujian kekuatan transversal