

LAMPIRAN

Lampiran 1

Uji Normalitas

Explore

Perlakuan

Case Processing Summary

Perlakuan		Cases					
		Valid		Missing		Total	
		N	Percent	N	Percent	N	Percent
Jumlah Koloni	Aquades	5	100.0%	0	.0%	5	100.0%
	10%	5	100.0%	0	.0%	5	100.0%
	20%	5	100.0%	0	.0%	5	100.0%
	40%	5	100.0%	0	.0%	5	100.0%

Descriptives

Perlakuan			Statistic	Std. Error	
Jumlah Koloni	Aquades	Mean	171.80	14.122	
		95% Confidence Interval for Mean	132.59		
		Lower Bound	211.01		
		Upper Bound	171.78		
		5% Trimmed Mean	164.00		
		Median	997.200		
		Variance	31.578		
		Std. Deviation	134		
		Minimum	210		
		Maximum	76		
		Range	60		
		Interquartile Range	.167		.913
		Skewness	-2.003		2.000
		Kurtosis			
10%		Mean	17.60	1.503	
		95% Confidence Interval for Mean	13.43		
		Lower Bound	21.77		
		Upper Bound	17.50		
		5% Trimmed Mean	17.00		
		Median			

	Variance		11.300	
	Std. Deviation		3.362	
	Minimum		14	
	Maximum		23	
	Range		9	
	Interquartile Range		6	
	Skewness		1.169	.913
	Kurtosis		2.034	2.000
20%	Mean		13.40	1.568
	95% Confidence Interval for Mean	Lower Bound	9.05	
		Upper Bound	17.75	
	5% Trimmed Mean		13.39	
	Median		14.00	
	Variance		12.300	
	Std. Deviation		3.507	
	Minimum		9	
	Maximum		18	
	Range		9	
	Interquartile Range		6	
	Skewness		.025	.913
	Kurtosis		-.874	2.000
40%	Mean		1.40	.510
	95% Confidence Interval for Mean	Lower Bound	-.02	
		Upper Bound	2.82	
	5% Trimmed Mean		1.39	
	Median		1.00	
	Variance		1.300	
	Std. Deviation		1.140	
	Minimum		0	
	Maximum		3	
	Range		3	
	Interquartile Range		2	
	Skewness		.405	.913
	Kurtosis		-.178	2.000

Tests of Normality

Perlakuan	Kolmogorov-Smirnov ^a			Shapiro-Wilk		
	Statistic	df	Sig.	Statistic	df	Sig.
Jumlah Koloni Aquades	.198	5	.200 [*]	.944	5	.697
10%	.253	5	.200 [*]	.925	5	.560
20%	.168	5	.200 [*]	.981	5	.940
40%	.237	5	.200 [*]	.961	5	.814

a. Lilliefors Significance Correction

*. This is a lower bound of the true significance.

Anova

Oneway

Descriptives

Jumlah Koloni

	N	Mean	Std. Deviation	Std. Error	95% Confidence Interval for Mean		Minimum	Maximum
					Lower Bound	Upper Bound		
Aquades	5	171.80	31.578	14.122	132.59	211.01	134	210
10%	5	17.60	3.362	1.503	13.43	21.77	14	23
20%	5	13.40	3.507	1.568	9.05	17.75	9	18
40%	5	1.40	1.140	.510	-.02	2.82	0	3
Total	20	51.05	73.269	16.383	16.76	85.34	0	210

Test of Homogeneity of Variances

Jumlah Koloni

Levene Statistic	df1	df2	Sig.
16.174	3	16	.000

ANOVA

Jumlah Koloni					
	Sum of Squares	df	Mean Square	F	Sig.
Between Groups	97910.550	3	32636.850	127.725	.000
Within Groups	4088.400	16	255.525		
Total	101998.950	19			

Post Hoc Tests

Multiple Comparisons

Jumlah Koloni

LSD

(I) Perlakuan	(J) Perlakuan	Mean Difference (I-J)	Std. Error	Sig.	95% Confidence Interval	
					Lower Bound	Upper Bound
Aquades	10%	154.200 [*]	10.110	.000	132.77	175.63
	20%	158.400 [*]	10.110	.000	136.97	179.83
	40%	170.400 [*]	10.110	.000	148.97	191.83
10%	Aquades	-154.200 [*]	10.110	.000	-175.63	-132.77
	20%	4.200	10.110	.683	-17.23	25.63
	40%	16.200	10.110	.129	-5.23	37.63
20%	Aquades	-158.400 [*]	10.110	.000	-179.83	-136.97
	10%	-4.200	10.110	.683	-25.63	17.23
	40%	12.000	10.110	.253	-9.43	33.43
40%	Aquades	-170.400 [*]	10.110	.000	-191.83	-148.97
	10%	-16.200	10.110	.129	-37.63	5.23
	20%	-12.000	10.110	.253	-33.43	9.43

*. The mean difference is significant at the 0.05 level.

Pengenceran	Sampel				
	1	2	3	4	5
Aquades	210	198	153	134	164
10%	14	23	16	18	17
20%	11	18	14	9	15
40%	1	0	2	1	3

Lampiran 2

ALAT DAN BAHAN



Gambar 6. Evaporator, Homogenizer, Penyerbuk

Gambar 7. Ekstrak Daun Kelor (*Moringa oleifera* L.)



Gambar 8. Inkubator dan



Gammar 9. Vortex mixer

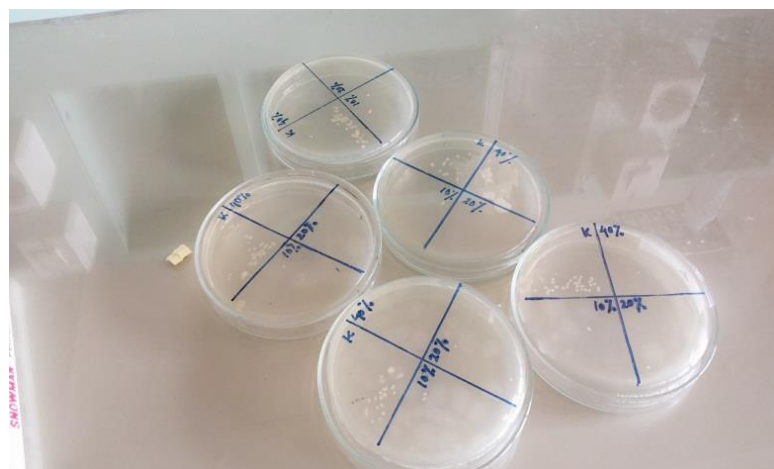
Lampiran 3**FOTO PENELITIAN****Gambar 10. Perendaman Akrilik pada Saliva Buatan****Gambar 11. Perendaman Akrilik pada Bakteri *Streptococcus Pyogenes***



Gambar 12. Pengenceran Ekstrak Daun Kelor (*Moringa oleifera* L.) dan kontrol



Gambar 13. Penempatan pada Ose Steril



Gambar 14. Hasil Inkubasi Bakteri *Streptococcus pyogenes*