

Uji statistic

**Case Processing Summary**

		Cases					
		Valid		Missing		Total	
		N	Percent	N	Percent	N	Percent
hasil	bahan						
	ekstrak stroberi	5	100.0%	0	.0%	5	100.0%
	ekstrak tomat	5	100.0%	0	.0%	5	100.0%
	air	5	100.0%	0	.0%	5	100.0%
	karbamid peroksida 10%	5	100.0%	0	.0%	5	100.0%

**Descriptives**

bahan				Statistic	Std. Error
hasil	ekstrak stroberi	Mean		11.8100	1.11974
		95% Confidence Interval for Mean	Lower Bound	8.7011	
			Upper Bound	14.9189	
		5% Trimmed Mean		11.8839	
		Median		12.1600	
		Variance		6.269	
		Std. Deviation		2.50382	
		Minimum		7.76	
		Maximum		14.53	
		Range		6.77	
		Interquartile Range		3.97	
		Skewness		-1.196	.913
		Kurtosis		2.340	2.000
	ekstrak tomat	Mean		10.1440	1.41029
		95% Confidence Interval for Mean	Lower Bound	6.2284	
			Upper Bound	14.0596	
		5% Trimmed Mean		10.1761	
		Median		10.5600	
		Variance		9.945	
		Std. Deviation		3.15351	
		Minimum		5.56	
		Maximum		14.15	
		Range		8.59	
		Interquartile Range		5.42	
		Skewness		-.416	.913
		Kurtosis		.878	2.000
	air	Mean		3.2760	1.33493

karbamid peroksida 10%	95% Confidence Interval for Mean	Lower Bound	-4303	
		Upper Bound	6.9823	
	5% Trimmed Mean		3.1778	
	Median		2.4200	
	Variance		8.910	
	Std. Deviation		2.98498	
	Minimum		.15	
	Maximum		8.17	
	Range		8.02	
	Interquartile Range		4.63	
	Skewness		1.329	.913
	Kurtosis		2.565	2.000
	Mean		17.9760	2.88351
	95% Confidence Interval for Mean	Lower Bound	9.9701	
		Upper Bound	25.9819	
	5% Trimmed Mean		17.8183	
	Median		18.1800	
	Variance		41.573	
	Std. Deviation		6.44772	
	Minimum		10.95	
Maximum		27.84		
Range		16.89		
Interquartile Range		11.18		
Skewness		.836	.913	
Kurtosis		.848	2.000	

#### Tests of Normality

bahan		Kolmogorov-Smirnov(a)			Shapiro-Wilk		
		Statistic	df	Sig.	Statistic	df	Sig.
hasil	ekstrak stroberi	.286	5	.200(*)	.911	5	.474
	ekstrak tomat	.170	5	.200(*)	.983	5	.949
	air	.278	5	.200(*)	.889	5	.353
	karbamid peroksida 10%	.225	5	.200(*)	.947	5	.712

\* This is a lower bound of the true significance.

a Lilliefors Significance Correction

**ANOVA**

hasil

	Sum of Squares	df	Mean Square	F	Sig.
Between Groups	547.780	3	182.593	10.951	.000
Within Groups	266.788	16	16.674		
Total	814.567	19			

**Multiple Comparisons**

Dependent Variable: hasil  
LSD

(I) bahan	(J) bahan	Mean Difference (I-J)	Std. Error	Sig.	95% Confidence Interval	
		Lower Bound	Upper Bound	Lower Bound	Upper Bound	Lower Bound
ekstrak stroberi	ekstrak tomat	1.66600	2.58257	.528	-3.8088	7.1408
	air	8.53400(*)	2.58257	.004	3.0592	14.0088
	karbamid peroksida 10%	-	2.58257	.030	-11.6408	-.6912
ekstrak tomat	ekstrak stroberi	-1.66600	2.58257	.528	-7.1408	3.8088
	air	6.86800(*)	2.58257	.017	1.3932	12.3428
	karbamid peroksida 10%	-	2.58257	.008	-13.3068	-2.3572
air	ekstrak stroberi	-	2.58257	.004	-14.0088	-3.0592
	ekstrak tomat	6.86800(*)	2.58257	.017	-12.3428	-1.3932
	karbamid peroksida 10%	14.70000(*)	2.58257	.000	-20.1748	-9.2252
karbamid peroksida 10%	ekstrak stroberi	6.16600(*)	2.58257	.030	.6912	11.6408
	ekstrak tomat	7.83200(*)	2.58257	.008	2.3572	13.3068
	air	14.70000(*)	2.58257	.000	9.2252	20.1748

\* The mean difference is significant at the .05 level.



Gambar 6 Perendaman gigi pada teh hitam



Gambar 7 Perendaman gigi pada buah ekstrak buah tomat dan ekstrak buah stroberi



Gambar 8 Perendaman gigi pada larutan kontrol negative dan kontrol positif



Gambar 8 Gigi diuji dengan specthropotometer



Gambar 9 Memasukkan data pada spectrophotometer ke computer



Gambar 10 Setelah perendaman



Gambar 11 Setelah perendaman dengan kontrol negatif



Gambar 12 Setelah perendaman kontrol positif

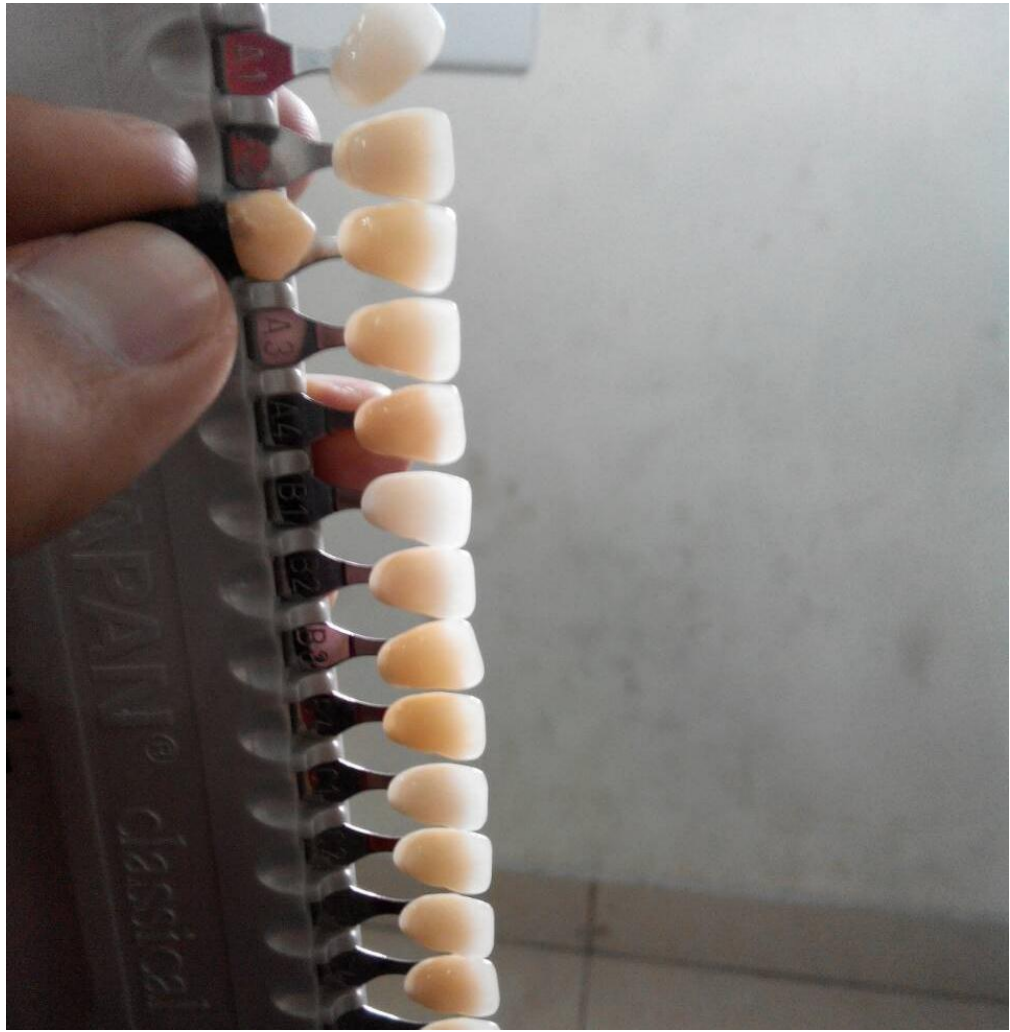




Gambar 13 Setelah perendaman dengan ekstrak stroberi



Gambar 14 Setelah perendaman ekstrak tomat



Gambar 15 pengukuran warna gigi dengan *shade guide*



Gambar 16 alat dan bahan penelitian



Gambar 17 aquades dan karbamid peroksida 10 %