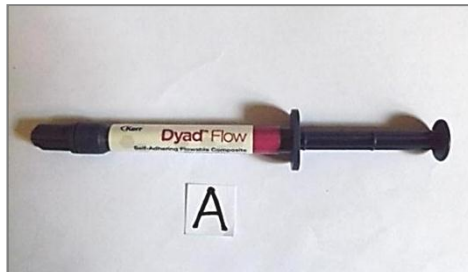
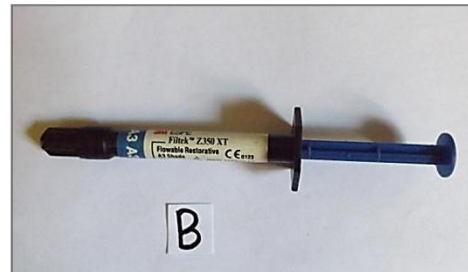
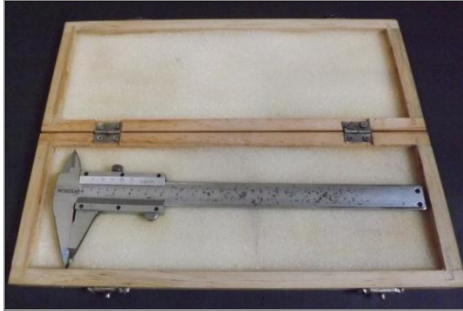
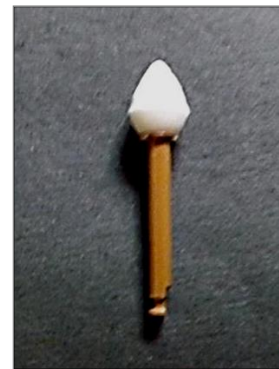


# LAMPIRAN

**Lampiran 1****Foto Bahan Penelitian***Self adhering flowable**Resin komposit flowable**Asam fosfat 37 %**Bonding total etch**Larutan methylene blue 2%**Cat kuku**Aseton**Saliva buatan**Malam merah*

**Foto Alat Penelitian***Sliding caliper**Mikromotor dan henpis**Round diamond bur**Flat disc wheel bur**Polishing bur**Dental probe**Bus-bus*



*Microbrush*



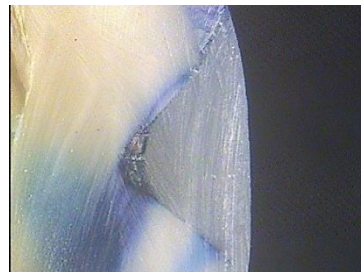
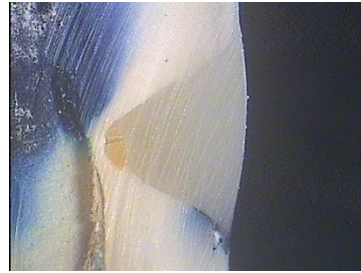
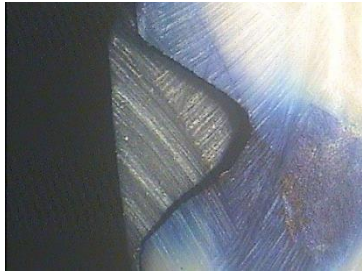
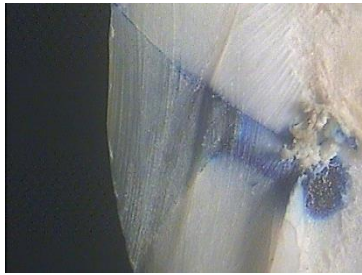
*Microbrush khusus untuk penggunaan self adhering flowable*



*Light curing unit*

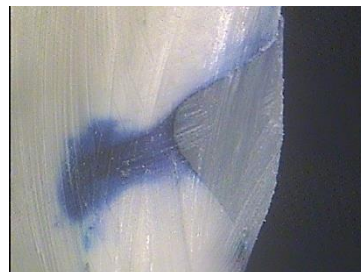
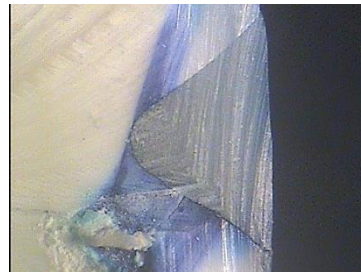
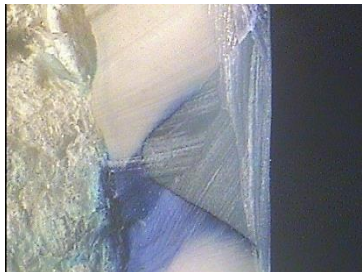
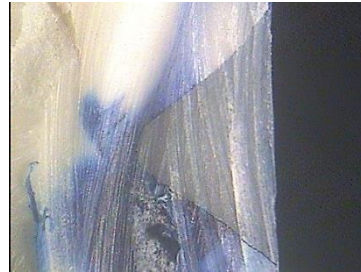
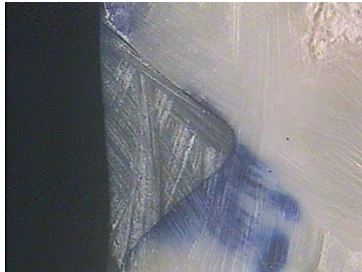


*Stereomikroskop*

**Lampiran 2****Foto Hasil Penelitian Kelompok I  
(Resin Komposit *Flowable* dan *Total Etch*)**



**Foto Hasil Penelitian Kelompok II**  
**(Resin Komposit *Self Adhering Flowable*)**



**Lampiran 3****Tabel Rekapitulasi Skor Hasil Penelitian**

<b>Kelompok I</b> (Resin komposit <i>Flowable&amp;Total</i> <i>Etch</i> )	<b>Kelompok II</b> ( <i>Self Adhering</i> <i>Flowable</i> )
3	3
3	3
3	3
1	3
1	3
3	3

## Lampiran 4

## Hasil Uji Statistik

NPar Tests  
Mann-Whitney Test

## Ranks

	Kelompok	N	Mean Rank	Sum of Ranks
Skoring Kebocoran Mikro	Kelompok 1	6	5.50	33.00
	Kelompok 2	6	7.50	45.00
	Total	12		

Test Statistics<sup>b</sup>

	Skoring Kebocoran Mikro
Mann-Whitney U	12.000
Wilcoxon W	33.000
Z	-1.483
Asymp. Sig. (2-tailed)	.138
Exact Sig. [2*(1-tailed Sig.)]	.394 <sup>a</sup>

a. Not corrected for ties.

b. Grouping Variable: Kelompok

## Frequency Table

## Kelompok 1

	Frequency	Percent	Valid Percent	Cumulative Percent
Valid Skor 1	2	33.3	33.3	33.3
Skor 3	4	66.7	66.7	100.0
Total	6	100.0	100.0	

## Kelompok 2

	Frequency	Percent	Valid Percent	Cumulative Percent
Valid Skor 3	6	100.0	100.0	100.0