

# LAMPIRAN

**Lampiran I****Data**

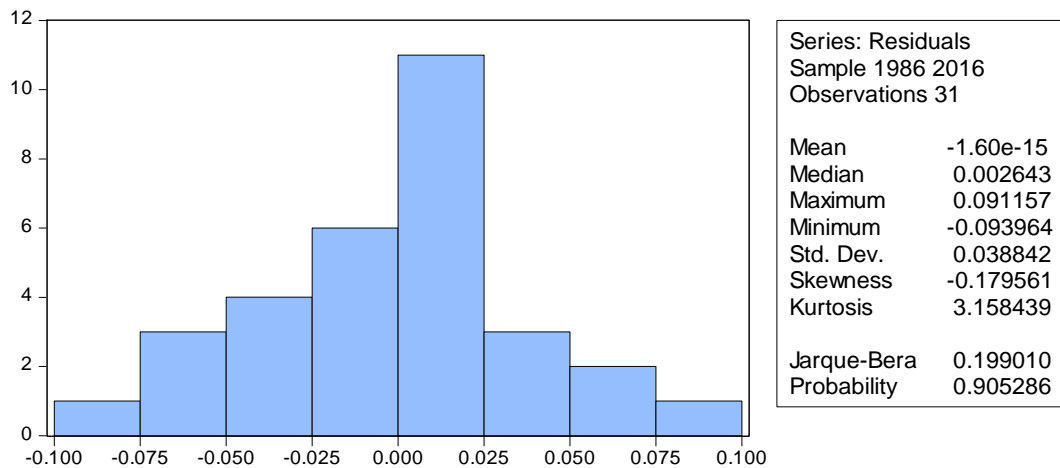
<b>Tahun</b>	<b>PDRB (Juta Rupiah)</b>	<b>PMDN (Juta Rupiah)</b>	<b>PMA (Juta Rupiah)</b>	<b>Luas Sawit (ha)</b>	<b>Angkatan Kerja (Jiwa)</b>
1986	24698580	84581	8438	19733	1237717
1987	26991625	106279	10128	22122	1243818
1988	28797996	409895	16538	22979	1243899
1989	30155125	566236	62827	22718	1267197
1990	32296969	661591	73008	24440	1411138
1991	34452601	882715	88740	26182	1450205
1992	36866473	1129266	98448	37698	1549014
1993	38919400	1719405	99109	52119	1621747
1994	41853813	1984511	108476	66424	1682633
1995	45453341	2106779	122280	71771	1713331
1996	49763618	2370619	172091	81966	1752533
1997	54384855	2619652	335228	98896	1725533
1998	51990359	3020296	644135	135176	1787677
1999	53418481	3103129	884419	160247	1901686
2000	54992517	3395910	1829085	87131	1778795
2001	56297049	3681354	2496978	163945	1771550
2002	58860718	3871001	2851082	170008	1827278
2003	60662857	4411370	3545991	180986	1901757
2004	63569412	4437965	4023741	184553	1954343
2005	66546697	4096567	5633475	192547	1993428
2006	70286937	7256213	5605522	220406	1969298
2007	74521663	4579583	6627638	250500	2143823
2008	78559608	5201255	7611365	308596	2157549
2009	82300545	6339180	9813786	289334	2200895
2010	86065854	8381742	10199052	522508	2197325
2011	90797590	10004669	12205479	625532	2233195
2012	96161928	13177576	19390833	773945	2182524
2013	101980339	17266077	28194885	906486	2140166
2014	107113786	24474623	30340629	929360	2320229
2015	112261168	30420152	55583763	1046212	2357224
2016	118184632	40383786	75430409	1055656	2388758

Sumber: Badan Pusat Statistik Kalimantan Barat (diolah)

## Lampiran II

### Hasil Uji Asumsi Klasik

#### 1. Uji Normalitas



#### 2. Uji Autokorelasi

Breusch-Godfrey Serial Correlation LM Test:

F-statistic	1.442145	Prob. F(2,24)	0.2562
Obs*R-squared	3.325845	Prob. Chi-Square(2)	0.1896

Test Equation:

Dependent Variable: RESID

Method: Least Squares

Date: 02/26/18 Time: 16:59

Sample: 1986 2016

Included observations: 31

Presample missing value lagged residuals set to zero.

Variable	Coefficient	Std. Error	t-Statistic	Prob.
C	-0.569250	2.047607	-0.278008	0.7834
LOG(PMDN)	-0.002193	0.018946	-0.115760	0.9088
LOG(PMA)	0.000563	0.012735	0.044206	0.9651
LOG(LUAS_LAHAN_PRODUKTIF)	-0.005836	0.027430	-0.212743	0.8333
LOG(ANGKATAN_KERJA)	0.046046	0.161008	0.285988	0.7773
RESID(-1)	0.319472	0.207914	1.536559	0.1375
RESID(-2)	-0.209458	0.205638	-1.018579	0.3186
R-squared	0.107285	Mean dependent var	-1.60E-15	
Adjusted R-squared	-0.115893	S.D. dependent var	0.038842	
S.E. of regression	0.041031	Akaike info criterion	-3.353313	
Sum squared resid	0.040404	Schwarz criterion	-3.029509	
Log likelihood	58.97635	Hannan-Quinn criter.	-3.247761	
F-statistic	0.480715	Durbin-Watson stat	1.960414	
Prob(F-statistic)	0.816001			

### 3. Uji Heteroskedastisitas

Heteroskedasticity Test: Glejser

F-statistic	0.976682	Prob. F(4,26)	0.4373
Obs*R-squared	4.049543	Prob. Chi-Square(4)	0.3993
Scaled explained SS	3.760235	Prob. Chi-Square(4)	0.4394

Test Equation:

Dependent Variable: ARESID

Method: Least Squares

Date: 02/26/18 Time: 17:00

Sample: 1986 2016

Included observations: 31

Variable	Coefficient	Std. Error	t-Statistic	Prob.
C	-1.703265	1.213577	-1.403508	0.1723
LOG(PMDN)	0.004033	0.011366	0.354828	0.7256
LOG(PMA)	-0.010327	0.007421	-1.391659	0.1758
LOG(LUAS_LAHAN_PRODUKTIF)	-0.006109	0.015544	-0.392983	0.6975
LOG(ANGKATAN_KERJA)	0.131110	0.095255	1.376406	0.1804
R-squared	0.130630	Mean dependent var		0.029540
Adjusted R-squared	-0.003119	S.D. dependent var		0.024636
S.E. of regression	0.024675	Akaike info criterion		-4.419382
Sum squared resid	0.015830	Schwarz criterion		-4.188093
Log likelihood	73.50041	Hannan-Quinn criter.		-4.343987
F-statistic	0.976682	Durbin-Watson stat		1.246450
Prob(F-statistic)	0.437251			

## 4. Uji Multikolinearitas

### a. R<sup>2</sup> Majemuk

Dependent Variable: LOG(PDRB)  
Method: Least Squares  
Date: 02/26/18 Time: 17:00  
Sample: 1986 2016  
Included observations: 31

Variable	Coefficient	Std. Error	t-Statistic	Prob.
C	8.115570	2.052040	3.954880	0.0005
LOG(PMDN)	0.036448	0.019220	1.896391	0.0691
LOG(PMA)	0.038356	0.012548	3.056810	0.0051
LOG(LUAS_LAHAN_PRODUKTIF)	0.162418	0.026283	6.179481	0.0000
LOG(ANGKATAN_KERJA)	0.467245	0.161067	2.900932	0.0075
R-squared	0.992461	Mean dependent var		17.85304
Adjusted R-squared	0.991302	S.D. dependent var		0.447354
S.E. of regression	0.041723	Akaike info criterion		-3.368857
Sum squared resid	0.045260	Schwarz criterion		-3.137569
Log likelihood	57.21728	Hannan-Quinn criter.		-3.293463
F-statistic	855.7245	Durbin-Watson stat		1.486680
Prob(F-statistic)	0.000000			

### b. R<sup>2</sup> Parsial

Dependent Variable: LOG(PMDN)  
Method: Least Squares  
Date: 02/26/18 Time: 17:01  
Sample: 1986 2016  
Included observations: 31

Variable	Coefficient	Std. Error	t-Statistic	Prob.
C	-35.65364	19.36803	-1.840850	0.0767
LOG(PMA)	0.204357	0.119330	1.712541	0.0983
LOG(LUAS_LAHAN_PRODUKTIF)	0.190466	0.260617	0.730826	0.4712
LOG(ANGKATAN_KERJA)	3.156959	1.493990	2.113106	0.0440
R-squared	0.924796	Mean dependent var		14.94062
Adjusted R-squared	0.916440	S.D. dependent var		1.445264
S.E. of regression	0.417778	Akaike info criterion		1.212181
Sum squared resid	4.712538	Schwarz criterion		1.397212
Log likelihood	-14.78881	Hannan-Quinn criter.		1.272496
F-statistic	110.6749	Durbin-Watson stat		0.653013
Prob(F-statistic)	0.000000			

Dependent Variable: LOG(PMA)  
 Method: Least Squares  
 Date: 02/26/18 Time: 17:02  
 Sample: 1986 2016  
 Included observations: 31

Variable	Coefficient	Std. Error	t-Statistic	Prob.
C	-49.57928	29.99172	-1.653099	0.1099
LOG(PMDN)	0.479451	0.279965	1.712541	0.0983
LOG(LUAS_LAHAN_PRODUKTIF)	1.024002	0.351666	2.911860	0.0071
LOG(ANGKATAN_KERJA)	3.069298	2.398690	1.279573	0.2116
R-squared	0.946818	Mean dependent var		13.94840
Adjusted R-squared	0.940909	S.D. dependent var		2.632460
S.E. of regression	0.639916	Akaike info criterion		2.064953
Sum squared resid	11.05628	Schwarz criterion		2.249984
Log likelihood	-28.00677	Hannan-Quinn criter.		2.125269
F-statistic	160.2304	Durbin-Watson stat		0.553812
Prob(F-statistic)	0.000000			

Dependent Variable: LOG(LUAS\_LAHAN\_PRODUKTIF)  
 Method: Least Squares  
 Date: 02/26/18 Time: 17:02  
 Sample: 1986 2016  
 Included observations: 31

Variable	Coefficient	Std. Error	t-Statistic	Prob.
C	-28.24985	14.00714	-2.016817	0.0538
LOG(PMDN)	0.101845	0.139356	0.730826	0.4712
LOG(PMA)	0.233383	0.080149	2.911860	0.0071
LOG(ANGKATAN_KERJA)	2.452139	1.080816	2.268785	0.0315
R-squared	0.947637	Mean dependent var		11.85743
Adjusted R-squared	0.941819	S.D. dependent var		1.266537
S.E. of regression	0.305497	Akaike info criterion		0.586161
Sum squared resid	2.519867	Schwarz criterion		0.771191
Log likelihood	-5.085491	Hannan-Quinn criter.		0.646476
F-statistic	162.8787	Durbin-Watson stat		0.624024
Prob(F-statistic)	0.000000			

Dependent Variable: LOG(ANGKATAN\_KERJA)

Method: Least Squares

Date: 02/26/18 Time: 17:03

Sample: 1986 2016

Included observations: 31

Variable	Coefficient	Std. Error	t-Statistic	Prob.
C	12.70228	0.189203	67.13586	0.0000
LOG(PMDN)	0.044951	0.021273	2.113106	0.0440
LOG(PMA)	0.018628	0.014558	1.279573	0.2116
LOG(LUAS_LAHAN_PRODUKTIF)	0.065297	0.028781	2.268785	0.0315
R-squared	0.943670	Mean dependent var		14.40797
Adjusted R-squared	0.937412	S.D. dependent var		0.199267
S.E. of regression	0.049852	Akaike info criterion		-3.039603
Sum squared resid	0.067101	Schwarz criterion		-2.854572
Log likelihood	51.11384	Hannan-Quinn criter.		-2.979287
F-statistic	150.7738	Durbin-Watson stat		0.755442
Prob(F-statistic)	0.000000			

### *Lampiran III*

#### **Hasil Regresi Linier**

Dependent Variable: PDRB  
Method: Least Squares  
Date: 02/26/18 Time: 16:57  
Sample: 1986 2016  
Included observations: 31

Variable	Coefficient	Std. Error	t-Statistic	Prob.
C	-29967518	4375220.	-6.849375	0.0000
PMDN	-0.148318	0.468821	-0.316363	0.7543
PMA	0.102034	0.212717	0.479671	0.6355
LUAS_LAHAN_PRODUKTIF	37.95083	5.527076	6.866349	0.0000
ANGKATAN_KERJA	44.27884	2.786689	15.88941	0.0000
R-squared	0.989179	Mean dependent var		62232469
Adjusted R-squared	0.987514	S.D. dependent var		26782343
S.E. of regression	2992700.	Akaike info criterion		32.80794
Sum squared resid	2.33E+14	Schwarz criterion		33.03923
Log likelihood	-503.5231	Hannan-Quinn criter.		32.88333
F-statistic	594.1648	Durbin-Watson stat		1.481922
Prob(F-statistic)	0.000000			

#### **Hasil Regresi Log Linier**

Dependent Variable: LOG(PDRB)  
Method: Least Squares  
Date: 02/26/18 Time: 16:58  
Sample: 1986 2016  
Included observations: 31

Variable	Coefficient	Std. Error	t-Statistic	Prob.
C	8.115570	2.052040	3.954880	0.0005
LOG(PMDN)	0.036448	0.019220	1.896391	0.0691
LOG(PMA)	0.038356	0.012548	3.056810	0.0051
LOG(LUAS_LAHAN_PRODUKTIF)	0.162418	0.026283	6.179481	0.0000
LOG(ANGKATAN_KERJA)	0.467245	0.161067	2.900932	0.0075
R-squared	0.992461	Mean dependent var		17.85304
Adjusted R-squared	0.991302	S.D. dependent var		0.447354
S.E. of regression	0.041723	Akaike info criterion		-3.368857
Sum squared resid	0.045260	Schwarz criterion		-3.137569
Log likelihood	57.21728	Hannan-Quinn criter.		-3.293463
F-statistic	855.7245	Durbin-Watson stat		1.486680
Prob(F-statistic)	0.000000			