

## LAMPIRAN DATA HASIL PENELITIAN

**Tabel 1. Data hasil pengukuran diameter lesi stomatitis perhari (mm)**

Kontrol negatif

tikus	hari ke 1	hari ke 2	hari ke 3	hari ke 4	hari ke 5	hari ke 6	hari ke 7
1	4.9	4.6	3.2	3.2	2.9	4.7	4.5
2	4.1	3.5	3.1	2.5	2	3.1	3
3	3.9	3.2	2.9	2.3	1	1.1	0

Kontrol positif

tikus	hari ke 1	hari ke 2	hari ke 3	hari ke 4	hari ke 5	hari ke 6	hari ke 7
1	4.2	4	3.9	3	2.9	2	1.9
2	4.9	4.1	4	3.2	3	2.9	2.8
3	5	4.2	4.1	4	3.1	2.8	2.3

Perlakuan *chitosan*

tikus	hari ke 1	hari ke 2	hari ke 3	hari ke 4	hari ke 5	hari ke 6	hari ke 7
1	4.9	3.5	3.2	2.9	2.6	2	2.7
2	4	3.7	3	3	2.9	1.9	0
3	4.1	3.4	2.5	2.3	1.2	1.1	2

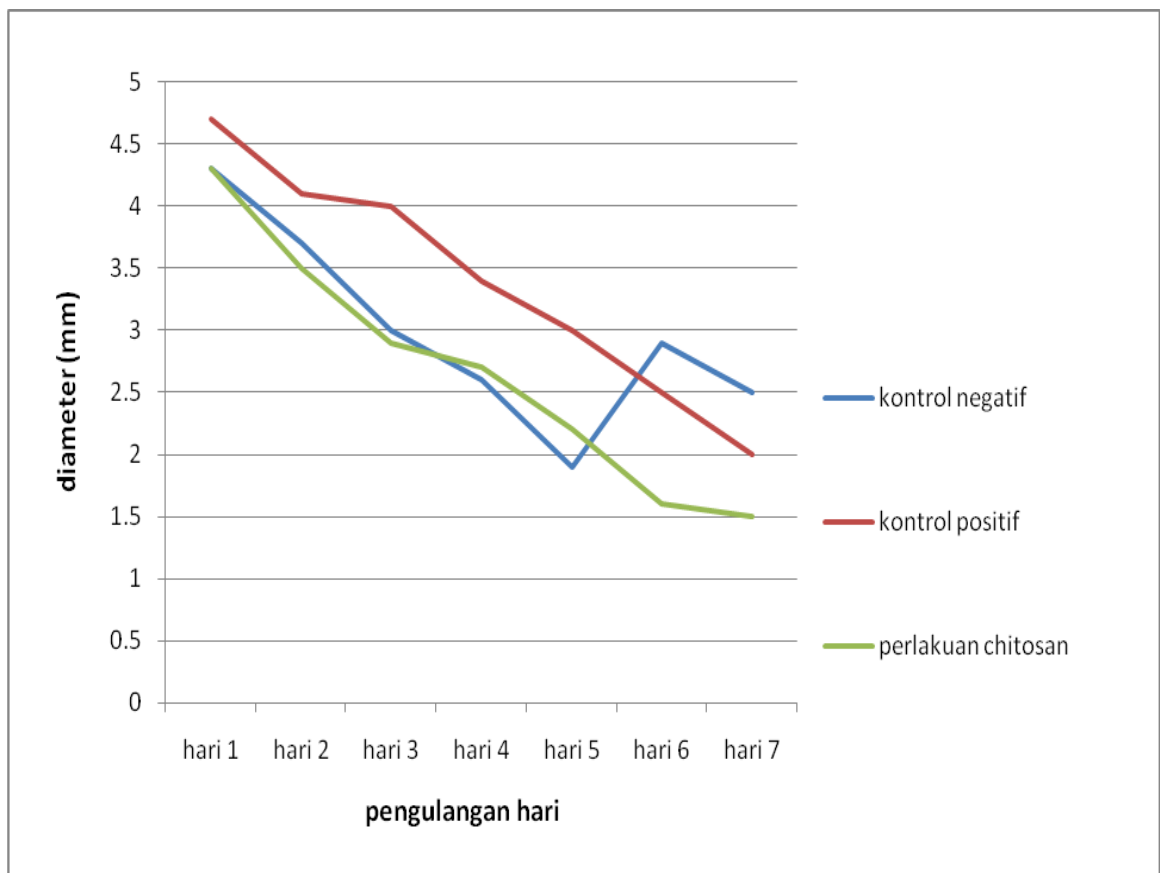
**Tabel 2. Rata – rata ukuran diameter perhari.**

Kelompok	hari 1	hari 2	hari 3	hari 4	hari 5	hari 6	hari 7
kontrol negatif	4.3	3.7	3	2.6	1.9	2.9	2.5
kontrol positif	4.7	4.1	4	3.4	3	2.5	2
perlakuan chitosan	4.3	3.5	2.9	2.7	2.2	1.6	1.5

**Tabel 3. Rata – rata ukuran diameter perkelompok.**

tikus	k.negatif	k.positif	chitosan
1	4	3.128	3.114
2	3.042	3.557	2.642
3	2.057	3.642	2.371

**Grafik rata-rata ukuran diameter lesi perhari.**



## LAMPIRAN DATA HASIL UJI STATISTIKA

### Tes uji normalitas berdasarkan hari

- Kontrol negatif

#### Tests of Normality

kelompok	Kolmogorov -Smirnov <sup>a</sup>			Shapiro-Wilk		
	Statistic	df	Sig.	Statistic	df	Sig.
hr 1 kontrol negatif	.314	3	.	.893	3	.363
hr 2 kontrol negatif	.308	3	.	.902	3	.391
hr 3 kontrol negatif	.253	3	.	.964	3	.637
hr 4 kontrol negatif	.304	3	.	.907	3	.407
hr 5 kontrol negatif	.181	3	.	.999	3	.942
hr 6 kontrol negatif	.196	3	.	.996	3	.878
hr 7 kontrol negatif	.253	3	.	.964	3	.637

a. Lilliefors Significance Correction

- Kontrol positif

#### Tests of Normality

kelompok	Kolmogorov -Smirnov <sup>a</sup>			Shapiro-Wilk		
	Statistic	df	Sig.	Statistic	df	Sig.
hr 1 kontrol positif	.343	3	.	.842	3	.220
hr 2 kontrol positif	.175	3	.	1.000	3	1.000
hr 3 kontrol positif	.175	3	.	1.000	3	1.000
hr 4 kontrol positif	.314	3	.	.893	3	.363
hr 5 kontrol positif	.175	3	.	1.000	3	1.000
hr 6 kontrol positif	.349	3	.	.832	3	.194
hr 7 kontrol positif	.196	3	.	.996	3	.878

a. Lilliefors Significance Correction

- Perlakuan chitosan

#### Tests of Normality

kelompok	Kolmogorov -Smirnov <sup>a</sup>			Shapiro-Wilk		
	Statistic	df	Sig.	Statistic	df	Sig.
hr 1 chitosan	.349	3	.	.832	3	.194
hr 2 chitosan	.253	3	.	.964	3	.637
hr 3 chitosan	.276	3	.	.942	3	.537
hr 4 chitosan	.337	3	.	.855	3	.253
hr 5 chitosan	.324	3	.	.878	3	.317
hr 6 chitosan	.349	3	.	.832	3	.194
hr 7 chitosan	.288	3	.	.928	3	.482

a. Lilliefors Significance Correction

## Tes Uji Normalitas Berdasarkan Kelompok

### Tests of Normality

kelompok		Kolmogorov-Smirnov <sup>a</sup>			Shapiro-Wilk		
		Statistic	df	Sig.	Statistic	df	Sig.
ukuran diameter lesi	kontrol negatif	.176	3	.	1.000	3	.984
	kontrol positif	.328	3	.	.871	3	.298
	perlakuan chitosan	.237	3	.	.976	3	.705

a. Lilliefors Significance Correction

## Hasil Uji Komparatif *Oneway Anova*

### Test of Homogeneity of Variances

ukuran diameter lesi

Levene Statistic	df 1	df 2	Sig.
1.470	2	6	.302

### Descriptives

ukuran diameter lesi

	N	Mean	Std. Deviation	Std. Error	95% Confidence Interval for Mean		Minimum	Maximum
					Lower Bound	Upper Bound		
kontrol negatif	3	3.0333	.97146	.56087	.6201	5.4466	2.06	4.00
kontrol positif	3	3.4429	.27553	.15908	2.7584	4.1273	3.13	3.64
perlakuan chitosan	3	2.7095	.37589	.21702	1.7758	3.6433	2.37	3.11
Total	9	3.0619	.62572	.20857	2.5809	3.5429	2.06	4.00

### ANOVA

ukuran diameter lesi

	Sum of Squares	df	Mean Square	F	Sig.
Between Groups	.810	2	.405	1.047	.407
Within Groups	2.322	6	.387		
Total	3.132	8			

**Test of Homogeneity of Variances**

	Levene Statistic	df 1	df 2	Sig.
hari1	.112	2	6	.896
hari2	7.431	2	6	.024
hari3	3.153	2	6	.116
hari4	.306	2	6	.747
hari5	2.744	2	6	.142
hari6	2.279	2	6	.184
hari7	2.822	2	6	.137

**ANOVA**

		Sum of Squares	df	Mean Square	F	Sig.
hari1	Between Groups	.296	2	.148	.621	.568
	Within Groups	1.427	6	.238		
	Total	1.722	8			
hari2	Between Groups	.487	2	.243	1.266	.348
	Within Groups	1.153	6	.192		
	Total	1.640	8			
hari3	Between Groups	2.109	2	1.054	19.367	.002
	Within Groups	.327	6	.054		
	Total	2.436	8			
hari4	Between Groups	.987	2	.493	2.289	.183
	Within Groups	1.293	6	.216		
	Total	2.280	8			
hari5	Between Groups	1.727	2	.863	1.491	.298
	Within Groups	3.473	6	.579		
	Total	5.200	8			
hari6	Between Groups	2.660	2	1.330	1.067	.401
	Within Groups	7.480	6	1.247		
	Total	10.140	8			
hari7	Between Groups	1.487	2	.743	.301	.751
	Within Groups	14.833	6	2.472		
	Total	16.320	8			

## LAMPIRAN DOKUMENTASI PENELITIAN

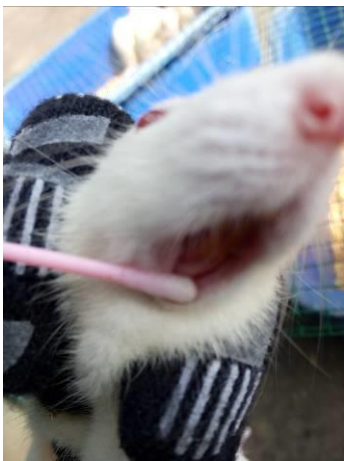
### Proses Pembuatan Gel Chitosan



Lokasi : Laboratorium Fakultas farmasi Universitas Gadjah Mada, Yogyakarta.



Proses Induksi sariawan, Pemberian Perlakuan, Pengukuran dan pemusnahan hewan uji.



Lokasi : Laboratorium Hewan Uji, FKIK Universitas Muhammadiyah Yogyakarta.

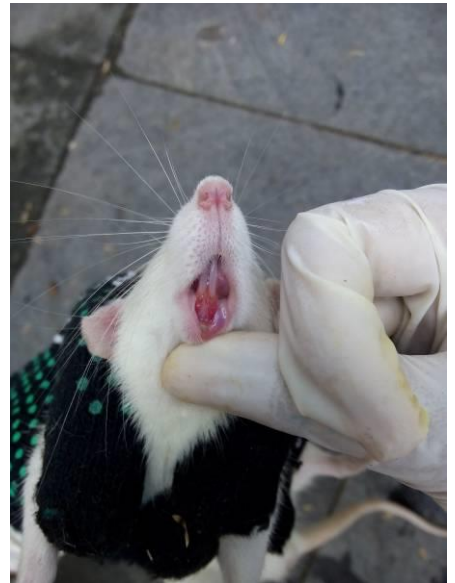
### Gambar Stomatitis Pada Mukosa Tikus



a

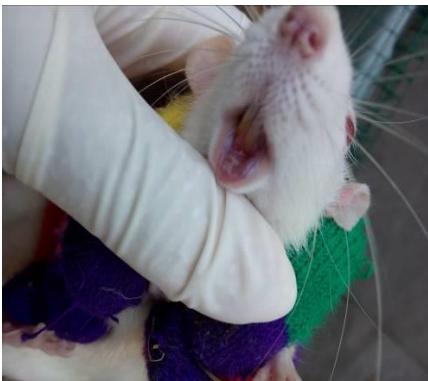


b



c

ket : a. Mukosa tikus kel.kontrol negatif pasca pembuatan stomatitis hari pertama  
b. Mukosa tikus kel.kontrol positif pasca pembuatan stomatitis hari pertama  
c. Mukosa tikus kel. *Chitosan* pasca pembuatan stomatitis hari pertama



a



b



c

ket: a. Mukosa tikus Kel. Kontrol Negatif hari ke 7 (selesai penelitian)  
b. Mukosa tikus Kel. Kontrol Positif hari ke 7 (selesai penelitian)  
c. Mukosa tikus Kel. *Chitosan* Negatif hari ke 7 (selesai penelitian)





Ket : proses pemusnahan hewan uji.

Lokasi : Laboratorium Kadang Hewan Uji Universitas Muhammadiyah Yogyakarta.