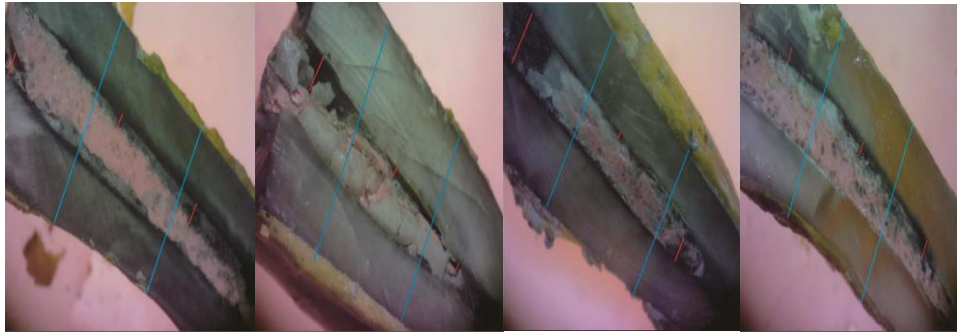


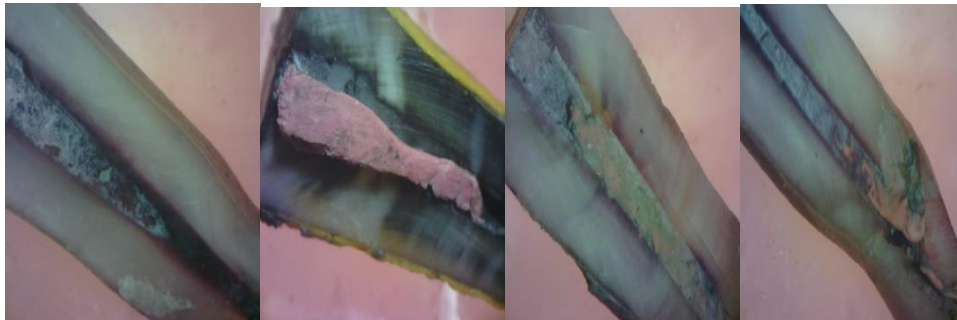
# LAMPIRAN

## Gambar Hasil Penelitian

### 1. Kelompok A (SIK + NaOCl 5,25%)



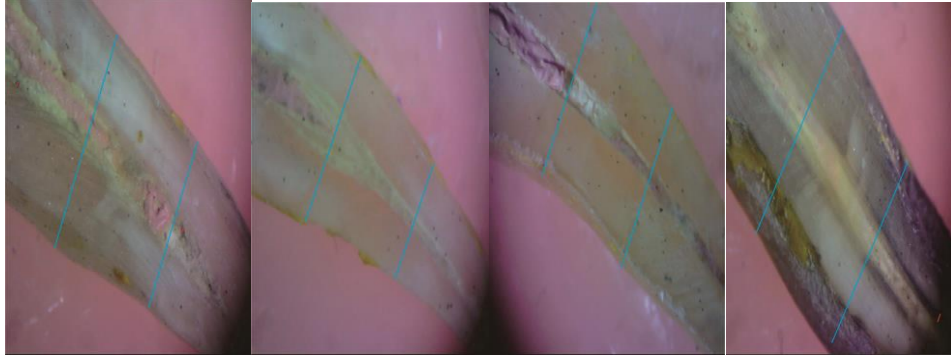
### 2. Kelompok B (SIK + Aquabides)



### 3. Kelompok C (AH Plus + NaOCl 5,25%)



#### 4. Kelompok D (AH Plus + Aquabides)



### Hasil Uji Statistik

#### 1. Uji Normalitas

##### Case Processing Summary

Kelompok		Cases					
		Valid		Missing		Total	
		N	Percent	N	Percent	N	Percent
Skor	SIK + NaOCl 5.25%	12	100.0%	0	.0%	12	100.0%
	SIK + Aquabides	12	100.0%	0	.0%	12	100.0%
	AH Plus + NaOCl 5.25%	12	100.0%	0	.0%	12	100.0%
	AH Plus + Aquabides	12	100.0%	0	.0%	12	100.0%

### Descriptives

Kelompok		Statistic	Std. Error	
Skor	SIK + NaOCl 5.25%	Mean	1.6960	.33853
		95% Lower Bound Confidence Interval for Mean	.9509	
		5% Trimmed Mean	2.4411	
		Median	1.6037	
		Variance	1.2480	
		Std. Deviation	1.375	
		Minimum	1.17271	
		Maximum	.46	
		Range	4.60	
		Interquartile Range	4.14	
		Skewness	.85	
		Kurtosis	1.681	.637
			2.733	1.232
SIK + Aquabides		Mean	.8776	.12276
		95% Lower Bound Confidence Interval for Mean	.6074	
		5% Trimmed Mean	1.1478	
			.8698	

	Median	.8910	
	Variance	.181	
	Std. Deviation	.42527	
	Minimum	.31	
	Maximum	1.59	
	Range	1.28	
	Interquartile Range	.83	
	Skewness	.018	.637
	Kurtosis	-1.146	1.232
AH Plus + NaOCl 5.25%	Mean	.3743	.15921
	95% Lower Bound Confidence Interval for Mean	.0239	
	Upper Bound	.7248	
	5% Trimmed Mean	.3189	
	Median	.1380	
	Variance	.304	
	Std. Deviation	.55154	
	Minimum	.00	
	Maximum	1.75	
	Range	1.75	
	Interquartile Range	.47	
	Skewness	1.774	.637

	Kurtosis	2.803	1.232
AH Plus + Aquabides	Mean	.1177	.06637
	95% Lower Bound Confidence Interval for Mean	-.0284	
	Upper Bound	.2638	
	5% Trimmed Mean	.0915	
	Median	.0000	
	Variance	.053	
	Std. Deviation	.22992	
	Minimum	.00	
	Maximum	.71	
	Range	.71	
	Interquartile Range	.26	
	Skewness	1.930	.637
	Kurtosis	3.165	1.232

### Tests of Normality

Kelompok	Kolmogorov-Smirnov <sup>a</sup>			Shapiro-Wilk		
	Statistic	df	Sig.	Statistic	df	Sig.
skor SIK + NaOCl 5.25%	.233	12	.071	.817	12	.015
SIK + Aquabides	.141	12	.200*	.938	12	.478

AH Plus + NaOCl 5.25%	.254	12	.032	.733	12	.002
AH Plus + Aquabides	.446	12	.000	.592	12	.000

a. Lilliefors Significance Correction

\*. This is a lower bound of the true significance.

### NPar Tests

#### Descriptive Statistics

	N	Mean	Std. Deviation	Minimum	Maximum
Skor	48	.7664	.90457	.00	4.60
kelompok	48	2.5000	1.12987	1.00	4.00

## 2. Uji Kruskal Wallis antar kelompok

#### Ranks

	Kelompok	N	Mean Rank
Skor	SIK + NaOCl 5.25%	12	38.25
	SIK + Aquabides	12	30.17
	AH Plus + NaOCl 5.25%	12	17.92
	AH Plus + Aquabides	12	11.67
	Total	48	

### Test Statistics<sup>a,b</sup>

	Skor
Chi-Square	27.114
Df	3
Asymp. Sig.	.000

a. Kruskal Wallis Test

b. Grouping Variable:  
kelompok

### 3. Uji Post Hoc Mann-Whitney antar kelompok

#### Ranks

kelompok	N	Mean Rank	Sum of Ranks
skor SIK + NaOCl 5.25%	12	15.67	188.00
SIK + Aquabides	12	9.33	112.00
Total	24		

### Test Statistics<sup>b</sup>

	Skor
Mann-Whitney U	34.000
Wilcoxon W	112.000
Z	-2.196
Asymp. Sig. (2-tailed)	.028
Exact Sig. [2*(1-tailed Sig.)]	.028 <sup>a</sup>



a. Not corrected for ties.

b. Grouping Variable: kelompok

### **NPar Tests**

#### **Mann-Whitney Test**

##### **Ranks**

	Kelompok	N	Mean Rank	Sum of Ranks
skor	SIK + NaOCl 5.25%	12	17.25	207.00
	AH Plus + NaOCl 5.25%	12	7.75	93.00
	Total	24		

##### **Test Statistics<sup>b</sup>**

	skor
Mann-Whitney U	15.000
Wilcoxon W	93.000
Z	-3.319
Asymp. Sig. (2-tailed)	.001
Exact Sig. [2*(1-tailed Sig.)]	.000 <sup>a</sup>

a. Not corrected for ties.

b. Grouping Variable: kelompok

## NPar Tests

### Mann-Whitney Test

#### Ranks

	Kelompok	N	Mean Rank	Sum of Ranks
skor	SIK + NaOCl 5.25%	12	18.33	220.00
	AH Plus + Aquabides	12	6.67	80.00
	Total	24		

#### Test Statistics<sup>b</sup>

	skor
Mann-Whitney U	2.000
Wilcoxon W	80.000
Z	-4.156
Asymp. Sig. (2-tailed)	.000
Exact Sig. [2*(1-tailed Sig.)]	.000 <sup>a</sup>

a. Not corrected for ties.

b. Grouping Variable: kelompok

## NPar Tests

### Mann-Whitney Test

#### Ranks

	Kelompok	N	Mean Rank	Sum of Ranks
skor	SIK + Aquabides	12	16.08	193.00
	AH Plus + NaOCl 5.25%	12	8.92	107.00
	Total	24		

#### Test Statistics<sup>b</sup>

	skor
Mann-Whitney U	29.000
Wilcoxon W	107.000
Z	-2.502
Asymp. Sig. (2-tailed)	.012
Exact Sig. [2*(1-tailed Sig.)]	.012 <sup>a</sup>

a. Not corrected for ties.

b. Grouping Variable: kelompok

## NPar Tests

### Mann-Whitney Test

#### Ranks

	Kelompok	N	Mean Rank	Sum of Ranks
skor	SIK + Aquabides	12	17.75	213.00
	AH Plus + Aquabides	12	7.25	87.00
	Total	24		

#### Test Statistics<sup>b</sup>

	skor
Mann-Whitney U	9.000
Wilcoxon W	87.000
Z	-3.740
Asymp. Sig. (2-tailed)	.000
Exact Sig. [2*(1-tailed Sig.)]	.000 <sup>a</sup>

a. Not corrected for ties.

b. Grouping Variable: kelompok

## NPar Tests

### Mann-Whitney Test

#### Ranks

Kelompok	N	Mean Rank	Sum of Ranks
skor AH Plus + NaOCl 5.25%	12	14.25	171.00
AH Plus + Aquabides	12	10.75	129.00
Total	24		

#### Test Statistics<sup>b</sup>

	skor
Mann-Whitney U	51.000
Wilcoxon W	129.000
Z	-1.394
Asymp. Sig. (2-tailed)	.163
Exact Sig. [2*(1-tailed Sig.)]	.242 <sup>a</sup>

a. Not corrected for ties.

b. Grouping Variable: kelompok

**4. Uji Post Hoc Mann Whitney antar bagian**

**Kelompok SIK + NaOCl 5,25%**

bagian	N	Mean Rank	Sum of Ranks
SIK + NaOCl 5.25% 1/3 Koronal	4	6.00	24.00
1/3 Tengah	4	3.00	12.00
Total	8		

	SIK + NaOCl 5.25%
Mann-Whitney U	2.000
Wilcoxon W	12.000
Z	-1.775
Asymp. Sig. (2-tailed)	.076
Exact Sig. [2*(1-tailed Sig.)]	.114 <sup>a</sup>

bagian	N	Mean Rank	Sum of Ranks
SIK + NaOCl 5.25% 1/3 Koronal	4	5.50	22.00
1/3 Apikal	4	3.50	14.00
Total	8		

	SIK + NaOCl 5.25%
Mann-Whitney U	4.000
Wilcoxon W	14.000
Z	-1.155
Asymp. Sig. (2-tailed)	.248
Exact Sig. [2*(1-tailed Sig.)]	.343 <sup>a</sup>

bagian	N	Mean Rank	Sum of Ranks
SIK + NaOCl 5.25% 1/3 Tengah	4	3.50	14.00
1/3 Apikal	4	5.50	22.00
Total	8		

	SIK + NaOCl 5.25%
Mann-Whitney U	4.000
Wilcoxon W	14.000
Z	-1.162
Asymp. Sig. (2-tailed)	.245
Exact Sig. [2*(1-tailed Sig.)]	.343 <sup>a</sup>

**Kelompok SIK +Aquabides**

bagian	N	Mean Rank	Sum of Ranks
SIK + Aquabides 1/3 Koronal	4	5.00	20.00
1/3 Tengah	4	4.00	16.00
Total	8		

	SIK + Aquabides
Mann-Whitney U	6.000
Wilcoxon W	16.000
Z	-.577
Asymp. Sig. (2-tailed)	.564
Exact Sig. [2*(1-tailed Sig.)]	.686 <sup>a</sup>

bagian	N	Mean Rank	Sum of Ranks
SIK + Aquabides 1/3 Koronal	4	3.75	15.00
1/3 Apikal	4	5.25	21.00
Total	8		



	SIK + Aquabides
Mann-Whitney U	5.000
Wilcoxon W	15.000
Z	-.866
Asymp. Sig. (2-tailed)	.386
Exact Sig. [2*(1-tailed Sig.)]	.486 <sup>a</sup>

bagian	N	Mean Rank	Sum of Ranks
SIK + Aquabides 1/3 Tengah	4	3.50	14.00
1/3 Apikal	4	5.50	22.00
Total	8		

	SIK + Aquabides
Mann-Whitney U	4.000
Wilcoxon W	14.000
Z	-1.155
Asymp. Sig. (2-tailed)	.248
Exact Sig. [2*(1-tailed Sig.)]	.343 <sup>a</sup>

**Kelompok AHPlus + NaOCl 5,25%**

bagian	N	Mean Rank	Sum of Ranks
AH Plus + NaOCl 5.25% 1/3 Koronal	4	5.25	21.00
1/3 Tengah	4	3.75	15.00
Total	8		

	AH Plus + NaOCl 5.25%
Mann-Whitney U	5.000
Wilcoxon W	15.000
Z	-.992
Asymp. Sig. (2-tailed)	.321
Exact Sig. [2*(1-tailed Sig.)]	.486 <sup>a</sup>

Bagian	N	Mean Rank	Sum of Ranks
AH Plus + NaOCl 5.25% 1/3 Koronal	4	4.75	19.00
1/3 Apikal	4	4.25	17.00
Total	8		

	AH Plus + NaOCl 5.25%
Mann-Whitney U	7.000
Wilcoxon W	17.000
Z	-.296
Asymp. Sig. (2-tailed)	.767
Exact Sig. [2*(1-tailed Sig.)]	.886 <sup>a</sup>

bagian	N	Mean Rank	Sum of Ranks
AH Plus + NaOCl 5.25% 1/3 Tengah	4	3.88	15.50
1/3 Apikal	4	5.12	20.50
Total	8		

	AH Plus + NaOCl 5.25%
Mann-Whitney U	5.500
Wilcoxon W	15.500
Z	-.769
Asymp. Sig. (2-tailed)	.442
Exact Sig. [2*(1-tailed Sig.)]	.486 <sup>a</sup>

**Kelompok AHPlus + Aquabides**

bagian	N	Mean Rank	Sum of Ranks
AH Plus + Aquabides 1/3 Koronal	4	5.00	20.00
1/3 Tengah	4	4.00	16.00
Total	8		

	AH Plus + Aquabides
Mann-Whitney U	6.000
Wilcoxon W	16.000
Z	-1.000
Asymp. Sig. (2-tailed)	.317
Exact Sig. [2*(1-tailed Sig.)]	.686 <sup>a</sup>

bagian	N	Mean Rank	Sum of Ranks
AH Plus + Aquabides 1/3 Koronal	4	3.88	15.50
1/3 Apikal	4	5.12	20.50
Total	8		

	AH Plus + Aquabides
Mann-Whitney U	5.500
Wilcoxon W	15.500
Z	-.833
Asymp. Sig. (2-tailed)	.405
Exact Sig. [2*(1-tailed Sig.)]	.486 <sup>a</sup>

Bagian	N	Mean Rank	Sum of Ranks
AH Plus + Aquabides 1/3 Tengah	4	3.50	14.00
1/3 Apikal	4	5.50	22.00
Total	8		

	AH Plus + Aquabides
Mann-Whitney U	4.000
Wilcoxon W	14.000
Z	-1.512
Asymp. Sig. (2-tailed)	.131
Exact Sig. [2*(1-tailed Sig.)]	.343 <sup>a</sup>



Fakultas Kedokteran dan Ilmu Kesehatan  
Universitas Muhammadiyah Yogyakarta

**SURAT KETERANGAN  
KELAYAKAN ETIKA PENELITIAN**

Nomor : 364/EP-FKIK-UMY/X/2016

Komisi Etika Penelitian Fakultas Kedokteran dan Ilmu Kesehatan Universitas Muhammadiyah Yogyakarta yang terdiri atas :

1. Prof. dr.H. Djauhar Ismail, Sp.A(K)., Ph.D.
2. Prof.Dr.dr.H. Soewito A, Sp.THT-KL
3. drg. Ana Medawati, M.Kes
4. drh. Tri Wulandari, M.Kes
5. Dr. dr. Titiek Hidayati, M. Kes
6. Dr. dr. Tri Wahyuliati, Sp. S., M. Kes
7. Titih Huriah, Ns., M. Kep., Sp. Kom
8. Dr. drg. Tita Ratya Utari, Sp. Ort
9. Sabtanti Harimurti, Ph. D., Apt
10. Dr. dr. Arlina Dewi, MMR
11. Dra. Irma Risdiyana, Apt., MPH
12. dr. Inayati Habib, Sp. MK., M. Kes

Telah mengkaji permohonan kelayakan etika penelitian yang diajukan oleh :

**Nama Peneliti** : Baiq Dwi Wulan Anggraini (20130340028)  
Aninda Puspa Hapsari (20130340102)  
Riri Noviani R N (20130340119)

**Judul Penelitian** : Pengaruh Siler Semen Ionomer Kaca dan Epoxy Resin Terhadap Kerapatan Dinding Saluran Akar Setelah Dilakukan Irigasi EDTA 17%, NaOCl 5,25% dan Chlorhexidine Gluconate 2%

**Pada Tanggal** : 07 Oktober 2016  
**Dengan Hasil** : Layak Etik

Demikian surat keterangan ini diberikan untuk dapat digunakan sebagaimana mestinya.

Yogyakarta, 10 Oktober 2016

Sekretaris,  
  
Dr. dr. Titiek Hidayati, M. Kes

Kampus:

Jl. Lingkar Selatan, Tamantirto, Kasihan, Bantul, Yogyakarta 55183  
Telp. (0274) 387656 ext. 213, 7491350 Fax. (0274) 387658

*Muda mendunia*

## Laboratorium Biokimia FKIK UMY

Jl. Ringroad selatan Tamantirto Kasihan Bantul.

### SURAT KETERANGAN

No: 040/PEN/VII/2017

Saya yang namanya tercantum di bawah ini, telah selesai melaksanakan tugas Penelitian / KTI di Laboratorium Biokimia FKIK UMY.

NO	NAMA	NO MHS	JURUSAN	KET
1	Aninda Puspa Hapsari	20130340102	Ked. Gigi	

Dengan judul Penelitian :

*"Pengaruh Obturasi Siler Semen Ionomer Kaca dan Resin Epoksi terhadap Kerapatan Dinding Saluran Akar setelah Irigasi NaOCl 5,25%"*

Demikian surat keterangan ini dibuat agar di penggunaan sebagaimana mestinya.

Yogyakarta, 8 Mei 2017

Petugas Lab. Penelitian

  
( Marfiandi )



SURAT KETERANGAN BEBAS LABORATORIUM

Menerangkan bahwa:

Nama : *Aninda Puspa Hapsari / Riri Noviani RN / Baiq Dwi W. A*

NIM : *(20130340102 / 20130340119 / 20130340028)*

Peminatan/Semester : *Fakultas kedokteran dan Ilmu kesehatan, kedokteran Gigi UMY*

Tidak memiliki tanggungan peminjaman di Laboratorium FKM UAD

Yogyakarta, .....



Dr. Surahma Asti Mulasari, S.Si.M.Kes