

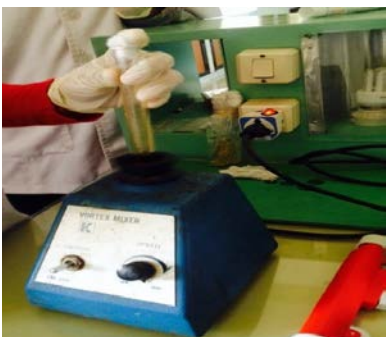
a. Ekstrak kental daun teh hijau



b. Ekstrak daun teh hijau dengan konsentrasi 30%, 40%, 50%, 70% dan 100%



c. Vortex mixer



d. Inkubator



e. Aquades Steril



f. Spritus



g. Inkubasi batri pada media agar darah



h. Ose



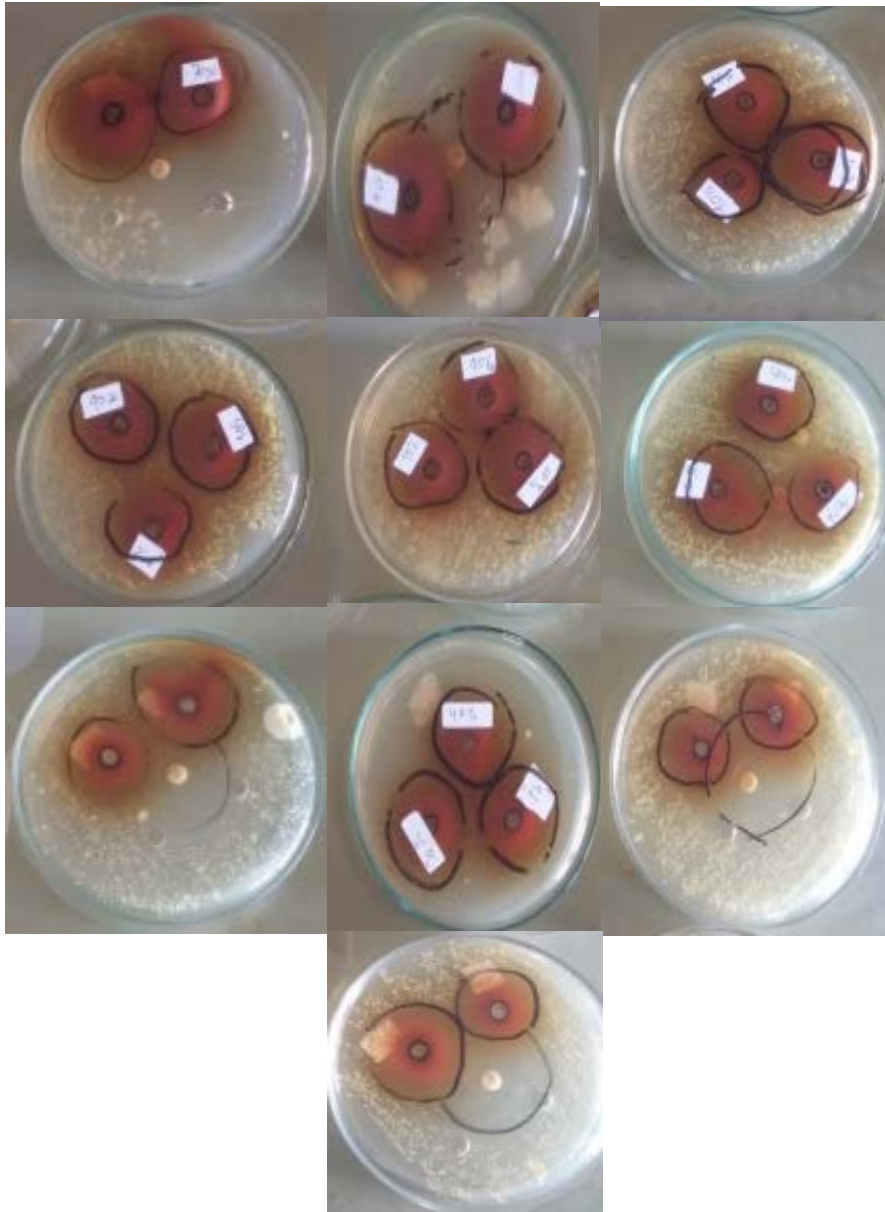
i. Paper Point



j. Timbangan Digital



k. Sampel



Uji Normalitas & Homogenitas

Explore

kelompok

Case Processing Summary

kelompok		Cases					
		Valid		Missing		Total	
		N	Percent	N	Percent	N	Percent
zona_radikal	30%	5	100.0%	0	.0%	5	100.0%
	40%	5	100.0%	0	.0%	5	100.0%
	50%	5	100.0%	0	.0%	5	100.0%
	70%	5	100.0%	0	.0%	5	100.0%
	100%	5	100.0%	0	.0%	5	100.0%
	Positif	5	100.0%	0	.0%	5	100.0%

Descriptives

kelompok			Statistic	Std. Error	
zona_radikal	30%	Mean	33.4280	1.12969	
		95% Confidence Interval for Mean	Lower Bound	30.2915	
			Upper Bound	36.5645	
		5% Trimmed Mean	33.4400		
		Median	33.3000		
		Variance	6.381		
		Std. Deviation	2.52606		
		Minimum	29.87		
		Maximum	36.77		
		Range	6.90		
		Interquartile Range	4.35		
		Skewness	-.178	.913	
		Kurtosis	.799	2.000	
			40%	Mean	35.9600
95% Confidence Interval for Mean	Lower Bound			33.0872	
	Upper Bound			38.8328	
5% Trimmed Mean	36.0389				
Median	36.4000				
Variance	5.353				
Std. Deviation	2.31366				
Minimum	32.20				
Maximum	38.30				
Range	6.10				
Interquartile Range	3.80				
Skewness	-1.291			.913	
Kurtosis	2.132			2.000	

50%	Mean		37.9060	4.61037
	95% Confidence Interval for Mean	Lower Bound	25.1056	
		Upper Bound	50.7064	
	5% Trimmed Mean		38.5494	
	Median		42.8000	
	Variance		106.278	
	Std. Deviation		1.03091E1	
	Minimum		19.80	
	Maximum		44.43	
	Range		24.63	
	Interquartile Range		14.36	
	Skewness		-2.047	.913
	Kurtosis		4.252	2.000
	70%	Mean		43.7600
95% Confidence Interval for Mean		Lower Bound	38.8506	
		Upper Bound	48.6694	
5% Trimmed Mean			43.9278	
Median			45.2000	
Variance			15.633	
Std. Deviation			3.95386	
Minimum			37.40	
Maximum			47.10	
Range			9.70	
Interquartile Range			6.80	
Skewness			-1.335	.913
Kurtosis			1.325	2.000
100%		Mean		45.6100
	95% Confidence Interval for Mean	Lower Bound	41.0886	
		Upper Bound	50.1314	
	5% Trimmed Mean		45.6489	
	Median		45.7000	
	Variance		13.260	
	Std. Deviation		3.64139	
	Minimum		40.72	
	Maximum		49.80	
	Range		9.08	
	Interquartile Range		6.92	
	Skewness		-.284	.913
	Kurtosis		-1.238	2.000
	Positif	Mean		47.6200
95% Confidence Interval for Mean		Lower Bound	42.5554	
		Upper Bound	52.6846	
5% Trimmed Mean			47.6056	
Median			47.3000	
Variance			16.637	

Std. Deviation	4.07885	
Minimum	42.80	
Maximum	52.70	
Range	9.90	
Interquartile Range	7.90	
Skewness	.127	.913
Kurtosis	-1.870	2.000

Tests of Normality

kelompok	Kolmogorov-Smirnov ^a			Shapiro-Wilk		
	Statistic	df	Sig.	Statistic	df	Sig.
zona_radikal 30%	.187	5	.200	.988	5	.970
40%	.255	5	.200	.911	5	.473
50%	.350	5	.045	.709	5	.012
70%	.242	5	.200	.873	5	.279
100%	.170	5	.200	.974	5	.898
Positif	.167	5	.200	.963	5	.826

a. Lilliefors Significance Correction

*. This is a lower bound of the true significance.

Test of Homogeneity of Variance

		Levene Statistic	df1	df2	Sig.
zona_radikal	Based on Mean	2.229	5	24	.084
	Based on Median	.586	5	24	.710
	Based on Median and with adjusted df	.586	5	6.011	.713
	Based on trimmed mean	1.694	5	24	.174

Anova

NPar Tests

Descriptive Statistics

	N	Mean	Std. Deviation	Minimum	Maximum
zona_radikal	30	40.7140	7.13595	19.80	52.70
kelompok	30	3.5000	1.73702	1.00	6.00

Kruskal-Wallis Test

Ranks

	kelompok	N	Mean Rank
zona_radikal	30%	5	5.20
	40%	5	8.00
	50%	5	13.70
	70%	5	19.40
	100%	5	22.20
	Positif	5	24.50
	Total	30	

Test Statistics^{a,b}

	zona_radikal
Chi-Square	19.790
df	5
Asymp. Sig.	.001

a. Kruskal Wallis Test

b. Grouping Variable: kelompok

Post-Hoc Test

T-Test (1*2)

Group Statistics

	kelompok	N	Mean	Std. Deviation	Std. Error Mean
zona_radikal	30%	5	33.4280	2.52606	1.12969
	40%	5	35.9600	2.31366	1.03470

Independent Samples Test

		Levene's Test for Equality of Variances		t-test for Equality of Means						
		F	Sig.	t	df	Sig. (2-tailed)	Mean Difference	Std. Error Difference	95% Confidence Interval of the Difference	
									Lower	Upper
zona_radikal	Equal variances assumed	.027	.874	-1.653	8	.137	-2.53200	1.53192	-6.06463	1.00063
	Equal variances not assumed			-1.653	7.939	.137	-2.53200	1.53192	-6.06935	1.00535

NPar Tests (1*3)

Descriptive Statistics

	N	Mean	Std. Deviation	Minimum	Maximum
zona_radikal	30	40.7140	7.13595	19.80	52.70
kelompok	30	3.5000	1.73702	1.00	6.00

Mann-Whitney Test

Ranks

	kelompok	N	Mean Rank	Sum of Ranks
zona_radikal	30%	5	4.00	20.00
	50%	5	7.00	35.00
	Total	10		

Test Statistics^b

	zona_radikal
Mann-Whitney U	5.000
Wilcoxon W	20.000
Z	-1.567
Asymp. Sig. (2-tailed)	.117
Exact Sig. [2*(1-tailed Sig.)]	.151 ^a

a. Not corrected for ties.

b. Grouping Variable: kelompok

T-Test (1*4)

Group Statistics

	kelompok	N	Mean	Std. Deviation	Std. Error Mean
zona_radikal	30%	5	33.4280	2.52606	1.12969
	70%	5	43.7600	3.95386	1.76822

Independent Samples Test

	Levene's Test for Equality of Variances	t-test for Equality of Means								
		F	Sig.	t	df	Sig. (2-tailed)	Mean Difference	Std. Error Difference	95% Confidence Interval of the Difference	
									Lower	Upper
zona_radikal	Equal variances assumed	1.134	.318	-4.924	8	.001	-10.33200	2.09828	-15.17065	-5.49335
	Equal variances not assumed			-4.924	6.799	.002	-10.33200	2.09828	-15.32354	-5.34046

T-Test (1*5)

Group Statistics

	kelompok	N	Mean	Std. Deviation	Std. Error Mean
zona_radikal	30%	5	33.4280	2.52606	1.12969
	100%	5	45.6100	3.64139	1.62848

Independent Samples Test

	Levene's Test for Equality of Variances	t-test for Equality of Means								
		F	Sig.	t	df	Sig. (2-tailed)	Mean Difference	Std. Error Difference	95% Confidence Interval of the Difference	
									Lower	Upper
zona_radikal	Equal variances assumed	.867	.379	-6.146	8	.000	-12.18200	1.98195	-16.75239	-7.61161
	Equal variances not assumed			-6.146	7.126	.000	-12.18200	1.98195	-16.85183	-7.51217

T-Test (1*6)

Group Statistics

	kelompok	N	Mean	Std. Deviation	Std. Error Mean
zona_radikal	30%	5	33.4280	2.52606	1.12969
	Positif	5	47.6200	4.07885	1.82412

Independent Samples Test

	Levene's Test for Equality of Variances	t-test for Equality of Means								
		F	Sig.	t	df	Sig. (2-tailed)	Mean Difference	Std. Error Difference	95% Confidence Interval of the Difference	
									Lower	Upper
zona_radikal	Equal variances assumed	1.735	.224	-6.614	8	.000	-14.19200	2.14560	-19.13976	-9.24424
	Equal variances not assumed			-6.614	6.675	.000	-14.19200	2.14560	-19.31607	-9.06793

NPar Tests (2*3)

Descriptive Statistics

	N	Mean	Std. Deviation	Minimum	Maximum
zona_radikal	30	40.7140	7.13595	19.80	52.70
kelompok	30	3.5000	1.73702	1.00	6.00

Mann-Whitney Test

Ranks

	kelompok	N	Mean Rank	Sum of Ranks
zona_radikal	40%	5	4.00	20.00
	50%	5	7.00	35.00
	Total	10		

Test Statistics^b

	zona_radikal
Mann-Whitney U	5.000
Wilcoxon W	20.000
Z	-1.567
Asymp. Sig. (2-tailed)	.117
Exact Sig. [2*(1-tailed Sig.)]	.151 ^a

a. Not corrected for ties.

b. Grouping Variable: kelompok

T-Test (2*4)

Group Statistics

	kelompok	N	Mean	Std. Deviation	Std. Error Mean
zona_radikal	40%	5	35.9600	2.31366	1.03470
	70%	5	43.7600	3.95386	1.76822

Independent Samples Test

	Levene's Test for Equality of Variances	t-test for Equality of Means								
		F	Sig.	t	df	Sig. (2-tailed)	Mean Difference	Std. Error Difference	95% Confidence Interval of the Difference	
									Lower	Upper
zona_radikal	Equal variances assumed	1.521	.252	-3.807	8	.005	-7.80000	2.04871	-12.52433	-3.07567
	Equal variances not assumed			-3.807	6.452	.008	-7.80000	2.04871	-12.72912	-2.87088

T-Test (2*5)

Group Statistics

	kelompok	N	Mean	Std. Deviation	Std. Error Mean
zona_radikal	40%	5	35.9600	2.31366	1.03470
	100%	5	45.6100	3.64139	1.62848

Independent Samples Test

	Levene's Test for Equality of Variances	t-test for Equality of Means								
		F	Sig.	t	df	Sig. (2-tailed)	Mean Difference	Std. Error Difference	95% Confidence Interval of the Difference	
									Lower	Upper
zona_radikal	Equal variances assumed	1.229	.300	-5.002	8	.001	-9.65000	1.92939	-14.09918	-5.20082
	Equal variances not assumed			-5.002	6.777	.002	-9.65000	1.92939	-14.24288	-5.05712

T-Test (2*6)

Group Statistics

	kelompok	N	Mean	Std. Deviation	Std. Error Mean
zona_radikal	40%	5	35.9600	2.31366	1.03470
	Positif	5	47.6200	4.07885	1.82412

Independent Samples Test

	Levene's Test for Equality of Variances	t-test for Equality of Means								
		F	Sig.	t	df	Sig. (2-tailed)	Mean Difference	Std. Error Difference	95% Confidence Interval of the Difference	
									Lower	Upper
zona_radikal	Equal variances assumed	2.265	.171	-5.560	8	.001	-11.66000	2.09714	-16.49602	-6.82398
	Equal variances not assumed			-5.560	6.333	.001	-11.66000	2.09714	-16.72690	-6.59310

NPar Tests (3*4)

Descriptive Statistics

	N	Mean	Std. Deviation	Minimum	Maximum
zona_radikal	30	40.7140	7.13595	19.80	52.70
kelompok	30	3.5000	1.73702	1.00	6.00

Mann-Whitney Test

Ranks

	kelompok	N	Mean Rank	Sum of Ranks
zona_radikal	50%	5	4.40	22.00
	70%	5	6.60	33.00
	Total	10		

Test Statistics^b

	zona_radikal
Mann-Whitney U	7.000
Wilcoxon W	22.000
Z	-1.149
Asymp. Sig. (2-tailed)	.251
Exact Sig. [2*(1-tailed Sig.)]	.310 ^a

a. Not corrected for ties.

b. Grouping Variable: kelompok

NPar Tests (3*5)

Descriptive Statistics

	N	Mean	Std. Deviation	Minimum	Maximum
zona_radikal	30	40.7140	7.13595	19.80	52.70
kelompok	30	3.5000	1.73702	1.00	6.00

Mann-Whitney Test

Ranks

	kelompok	N	Mean Rank	Sum of Ranks
zona_radikal	50%	5	3.80	19.00
	100%	5	7.20	36.00
	Total	10		

Test Statistics^b

	zona_radikal
Mann-Whitney U	4.000
Wilcoxon W	19.000
Z	-1.776
Asymp. Sig. (2-tailed)	.076
Exact Sig. [2*(1-tailed Sig.)]	.095 ^a

a. Not corrected for ties.

b. Grouping Variable: kelompok

NPar Tests (3*6)

Descriptive Statistics

	N	Mean	Std. Deviation	Minimum	Maximum
zona_radikal	30	40.7140	7.13595	19.80	52.70
kelompok	30	3.5000	1.73702	1.00	6.00

Mann-Whitney Test

Ranks

	kelompok	N	Mean Rank	Sum of Ranks
zona_radikal	50%	5	3.50	17.50
	Positif	5	7.50	37.50
	Total	10		

Test Statistics^b

	zona_radikal
Mann-Whitney U	2.500
Wilcoxon W	17.500
Z	-2.095
Asymp. Sig. (2-tailed)	.036
Exact Sig. [2*(1-tailed Sig.)]	.032 ^a

a. Not corrected for ties.

b. Grouping Variable: kelompok

T-Test (4*5)

Group Statistics

	kelompok	N	Mean	Std. Deviation	Std. Error Mean
zona_radikal	70%	5	43.7600	3.95386	1.76822
	100%	5	45.6100	3.64139	1.62848

Independent Samples Test

		Levene's Test for Equality of Variances		t-test for Equality of Means						
		F	Sig.	t	df	Sig. (2-tailed)	Mean Difference	Std. Error Difference	95% Confidence Interval of the Difference	
									Lower	Upper
zona_radikal	Equal variances assumed	.031	.865	-.770	8	.464	-1.85000	2.40386	-7.39331	3.69331
	Equal variances not assumed			-.770	7.946	.464	-1.85000	2.40386	-7.39983	3.69983

T-Test (4*6)

Group Statistics

	kelompok	N	Mean	Std. Deviation	Std. Error Mean
zona_radikal	70%	5	43.7600	3.95386	1.76822
	Positif	5	47.6200	4.07885	1.82412

Independent Samples Test

		Levene's Test for Equality of Variances		t-test for Equality of Means						
		F	Sig.	t	df	Sig. (2-tailed)	Mean Difference	Std. Error Difference	95% Confidence Interval of the Difference	
									Lower	Upper
zona_radikal	Equal variances assumed	.029	.868	-1.519	8	.167	-3.86000	2.54047	-9.71834	1.99834
	Equal variances not assumed			-1.519	7.992	.167	-3.86000	2.54047	-9.71933	1.99933

T-Test (5*6)

Group Statistics

	kelompok	N	Mean	Std. Deviation	Std. Error Mean
zona_radikal	100%	5	45.6100	3.64139	1.62848
	Positif	5	47.6200	4.07885	1.82412

Independent Samples Test

		Levene's Test for Equality of Variances		t-test for Equality of Means						
		F	Sig.	t	df	Sig. (2-tailed)	Mean Difference	Std. Error Difference	95% Confidence Interval of the Difference	
									Lower	Upper
zona_radikal	Equal variances assumed	.132	.726	-.822	8	.435	-2.01000	2.44527	-7.64880	3.62880
	Equal variances not assumed			-.822	7.899	.435	-2.01000	2.44527	-7.66135	3.64135

Post Hoc Tests

Multiple Comparisons

zona_radikal
LSD

(I) kelompok	(J) kelompok	Mean Difference (I-J)	Std. Error	Sig.	95% Confidence Interval	
					Lower Bound	Upper Bound
30%	40%	-2.53200	3.30193	.137	-9.3469	4.2829
	50%	-4.47800	3.30193	.117	-11.2929	2.3369
	70%	-10.33200	3.30193	.001	-17.1469	-3.5171
	100%	-12.18200	3.30193	.000	-18.9969	-5.3671
	Positif	-14.19200	3.30193	.000	-21.0069	-7.3771
40%	30%	2.53200	3.30193	.137	-4.2829	9.3469
	50%	-1.94600	3.30193	.117	-8.7609	4.8689
	70%	-7.80000	3.30193	.001	-14.6149	-.9851
	100%	-9.65000	3.30193	.001	-16.4649	-2.8351
	Positif	-11.66000	3.30193	.001	-18.4749	-4.8451
50%	30%	4.47800	3.30193	.117	-2.3369	11.2929
	40%	1.94600	3.30193	.117	-4.8689	8.7609
	70%	-5.85400	3.30193	.251	-12.6689	.9609
	100%	-7.70400	3.30193	.076	-14.5189	-.8891
	Positif	-9.71400	3.30193	.036	-16.5289	-2.8991
70%	30%	10.33200	3.30193	.001	3.5171	17.1469
	40%	7.80000	3.30193	.001	.9851	14.6149
	50%	5.85400	3.30193	.251	-.9609	12.6689
	100%	-1.85000	3.30193	.464	-8.6649	4.9649
	Positif	-3.86000	3.30193	.167	-10.6749	2.9549
100%	30%	12.18200	3.30193	.000	5.3671	18.9969
	40%	9.65000	3.30193	.001	2.8351	16.4649
	50%	7.70400	3.30193	.076	.8891	14.5189
	70%	1.85000	3.30193	.464	-4.9649	8.6649
	Positif	-2.01000	3.30193	.435	-8.8249	4.8049
Positif	30%	14.19200	3.30193	.000	7.3771	21.0069
	40%	11.66000	3.30193	.001	4.8451	18.4749
	50%	9.71400	3.30193	.036	2.8991	16.5289
	70%	3.86000	3.30193	.167	-2.9549	10.6749
	100%	2.01000	3.30193	.435	-4.8049	8.8249

*. The mean difference is significant at the 0.05 level.