

LAMPIRAN

Lampiran 1

Daftar Perusahaan yang Menerbitkan *Sustainability Report*

Periode 2012-2016

No	Kode	Nama Perusahaan	2012	2013	2014	2015	2016
1	AALI	AGRO ASRI LESTARI	v	v	v	v	v
2	ADHI	ADHI	-	v	v	v	v
3	ADMF	ADIRA FINANCE	v	v	v	v	-
4	ANTM	PT ANEKA TAMBANG	v	v	v	v	-
5	ASII	ASTRA INTERNASIONAL	v	v	v	v	v
6	BBCA	BANK BCA	-	-	-	v	v
7	BBNI	BANK BNI	v	v	v	v	v
8	BBRI	BANK BRI	v	v	v	v	v
9	BBTN	BANK BTN	v	v	v	v	v
10	BDMN	BANK DANAMON	-	v	v	v	
11	BNGA	BANK CIMB NIAGA	v	v	v	v	v
12	BNII	MAYBANK INDONESIA	v	v	v	v	v
13	BNLI	BANK PERMATA	-	-	v	v	v
14	INCO	PT VALE INDONESIA	v	v	v	v	v
15	INDY	INDIKA ENERGY	v	v	v	v	-
16	INTP	INDOCEMENT TUNGGAL PRAKARSA Tbk.	-	v	v	v	v
17	ITMG	INDO TAMBANGRAYA MEGAH Tbk.	-	v	v	v	v
18	JSMR	JASA MARGA PERSERO Tbk.	v	v	-	v	-
19	PGAS	PERUSAHAAN GAS NEGARA PERSERO Tbk.	-	v	v	v	v
20	PTBA	PT BATU BARA BUKIT ASAM	v	v	v	v	v
21	SMCB	PT HOLCIM INDONESIA	v	v	v	v	v
22	SMGR	PT SEMEN INDONESIA	-	v	v	v	v
23	TLKM	PT TELEKOMUNIKASI INDONESIA	v	v	v	v	v
24	UNSP	BAKRIE SUMATERA PLANTATION Tbk.	v	v	v	v	-

Lanjutan Lampiran 1

No	Kode	Nama Perusahaan	2012	2013	2014	2015	2016
25	UNTR	PT UNITED TRACTORS	-	v	v	v	v
27	WIKA	PT WIJAYA KARYA	v	v	v	v	v

Catatan: Daftar perusahaan ini telah melalui uji *outlier*

Lampiran 2

Variabel Dependen-Kinerja Pasar

NO	KODE	NAMA PERUSAHAAN	TAHUN	KINERJA PASAR
1	AALI	AGRO ASRI LESTARI	2012	2.462878719
2	ADMF	ADIRA FINANCE	2012	1.18515901
3	ANTM	PT ANEKA TAMBANG	2012	0.918036878
4	ASII	ASTRA INTERNASIONAL	2012	2.272975013
5	BBNI	BANK BNI	2012	1.149139346
6	BBRI	BANK BRI	2012	1.26770155
7	BBTN	BANK BTN	2012	1.063956491
8	BNGA	BANK CIMB NIAGA	2012	1.062961055
9	BNII	MAYBANK INDONESIA	2012	1.114845944
10	INCO	PT VALE INDONESIA	2012	1.341199539
11	INDY	INDIKA ENERGY	2012	0.841188389
12	JSMR	JASA MARGA PERSERO Tbk.	2012	2.248987585
13	PTBA	PT BATU BARA BUKIT ASAM	2012	3.083248857
14	SMCB	PT HOLCIM INDONESIA	2012	2.638217213
15	TLKM	PT TELEKOMUNIKASI INDONESIA	2012	0.787786534
16	UNSP	BAKRIE SUMATERA PLANTATION Tbk.	2012	1.356444326
17	WIKA	PT WIJAYA KARYA	2012	1.801353751
18	AALI	AGRO ASRI LESTARI	2013	2.938603905
19	ADHI	ADHI	2013	1.344467122
20	ADMF	ADIRA FINANCE	2013	1.112214263
21	ANTM	PT ANEKA TAMBANG	2013	0.834453983
22	ASII	ASTRA INTERNASIONAL	2013	1.955743013
23	BBNI	BANK BNI	2013	1.125065236
24	BBRI	BANK BRI	2013	1.267276847

Lanjutan Lampiran 2

NO	KODE	NAMA PERUSAHAAN	TAHUN	KINERJA PASAR
25	BBTN	BANK BTN	2013	1.017810679
26	BDMN	BANK DANAMON	2013	1.060501322
27	BNGA	BANK CIMB NIAGA	2013	1.043628797
28	BNII	MAYBANK INDONESIA	2013	1.057037932
29	INCO	PT VALE INDONESIA	2013	1.266984164
30	INDY	INDIKA ENERGY	2013	0.699722966
31	INTP	INDOCEMENT TUNGGAL PRAKARSA Tbk.	2013	3.42924952
32	ITMG	INDO TAMBANGRAYA MEGAH Tbk.	2013	1.95570815
33	JSMR	JASA MARGA PERSERO Tbk.	2013	2.093722001
34	PGAS	PERUSAHAAN GAS NEGARA PERSERO Tbk.	2013	2.767974984
35	PTBA	PT BATU BARA BUKIT ASAM	2013	2.217974497
36	SMCB	PT HOLCIM INDONESIA	2013	1.915813673
37	SMGR	PT SEMEN INDONESIA	2013	3.470249422
38	TLKM	PT TELEKOMUNIKASI INDONESIA	2013	2.171385858
39	UNSP	BAKRIE SUMATERA PLANTATION Tbk.	2013	1.110629971
40	UNTR	PT UNITED TRACTORS	2013	1.7441121
41	WIKA	PT WIJAYA KARYA	2013	1.843083685
42	AALI	AGRO ASRI LESTARI	2014	2.32687766
43	ADHI	ADHI	2014	1.299981719
44	ADMF	ADIRA FINANCE	2014	1.074586208
45	ANTM	PT ANEKA TAMBANG	2014	0.773223493
46	ASII	ASTRA INTERNASIONAL	2014	1.960994065
47	BBNI	BANK BNI	2014	1.142379338
48	BBRI	BANK BRI	2014	1.286482023
49	BBTN	BANK BTN	2014	1.007307121
50	BDMN	BANK DANAMON	2014	1.079774526
51	BNGA	BANK CIMB NIAGA	2014	0.991706
52	BNII	MAYBANK INDONESIA	2014	0.989032916
53	BNLI	BANK PERMATA	2014	0.998055393
54	INCO	PT VALE INDONESIA	2014	1.342120527
55	INDY	INDIKA ENERGY	2014	0.680951927
56	INTP	INDOCEMENT TUNGGAL PRAKARSA Tbk.	2014	2.936169509

Lanjutan Lampiran 2

NO	KODE	NAMA PERUSAHAAN	TAHUN	KINERJA PASAR
57	ITMG	INDO TAMBANGRAYA MEGAH Tbk.	2014	1.486789079
58	PGAS	PERUSAHAAN GAS NEGARA PERSERO Tbk.	2014	2.028166772
59	PTBA	PT BATU BARA BUKIT ASAM	2014	2.086858654
60	SMCB	PT HOLCIM INDONESIA	2014	1.172467827
61	SMGR	PT SEMEN INDONESIA	2014	2.630871069
62	TLKM	PT TELEKOMUNIKASI INDONESIA	2014	2.456311364
63	UNSP	BAKRIE SUMATERA PLANTATION Tbk.	2014	1.1551479
64	UNTR	PT UNITED TRACTORS	2014	1.708886585
65	WIKA	PT WIJAYA KARYA	2014	1.937722669
66	AALI	AGRO ASRI LESTARI	2015	1.722150431
67	ADHI	ADHI	2015	1.263500763
68	ADMF	ADIRA FINANCE	2015	0.959422556
69	ANTM	PT ANEKA TAMBANG	2015	0.763926629
70	ASII	ASTRA INTERNASIONAL	2015	1.680313567
71	BBCA	BANK BNI	2015	1.396189561
72	BBNI	BANK BRI	2015	1.002173442
73	BBRI	BANK BTN	2015	1.182941377
74	BBTN	BANK DANAMON	2015	1.026809555
75	BDMN	BANK CIMB NIAGA	2015	1.009797962
76	BNGA	MAYBANK INDONESIA	2015	0.964102455
77	BNII	PT VALE INDONESIA	2015	0.970177881
78	BNLI	INDIKA ENERGY	2015	0.935260112
79	INCO	INDOCEMENT TUNGGAL PRAKARSA Tbk.	2015	0.749490165
80	INDY	INDO TAMBANGRAYA MEGAH Tbk.	2015	0.673908271
81	INTP	JASA MARGA PERSERO Tbk.	2015	2.763720614
82	ITMG	PERUSAHAAN GAS NEGARA PERSERO Tbk.	2015	0.752271149
83	JSMR	PT BATU BARA BUKIT ASAM	2015	1.660736041
84	PGAS	PT HOLCIM INDONESIA	2015	1.242100946
85	PTBA	PT SEMEN INDONESIA	2015	1.30607714
86	SMCB	PT TELEKOMUNIKASI INDONESIA	2015	0.985535141

Lanjutan Lampiran 2

NO	KODE	NAMA PERUSAHAAN	TAHUN	KINERJA PASAR
87	SMGR	BAKRIE SUMATERA PLANTATION Tbk.	2015	1.862640291
88	TLKM	PT UNITED TRACTORS	2015	2.454700752
89	UNSP	PT WIJAYA KARYA	2015	1.206977573
90	UNTR	AGRO ASRI LESTARI	2015	1.288756824
91	WIKA	ADHI	2015	1.480802352
92	AALI	ADIRA FINANCE	2016	1.457538114
93	ADHI	PT ANEKA TAMBANG	2016	1.149110129
94	ASII	ASTRA INTERNASIONAL	2016	1.799162307
95	BBCA	BANK BNI	2016	1.431271814
96	BBNI	BANK BRI	2016	1.017278184
97	BBRI	BANK BTN	2016	1.172640611
98	BBTN	BANK DANAMON	2016	1.022920105
99	BNGA	BANK CIMB NIAGA	2016	0.918214981
100	BNII	MAYBANK INDONESIA	2016	1.02175336
101	BNLI	BANK PERMATA	2016	0.97085513
102	INCO	PT VALE INDONESIA	2016	0.980224298
103	INTP	INDOCEMENT TUNGGAL PRAKARSA Tbk.	2016	2.33764773
104	ITMG	INDO TAMBANGRAYA MEGAH Tbk.	2016	1.672451973
105	PGAS	PERUSAHAAN GAS NEGARA PERSERO Tbk.	2016	1.212775551
106	PTBA	PT BATU BARA BUKIT ASAM	2016	2.069191853
107	SMCB	PT HOLCIM INDONESIA	2016	0.9430419
108	SMGR	PT SEMEN INDONESIA	2016	1.515733425
109	TLKM	PT TELEKOMUNIKASI INDONESIA	2016	2.730183481
110	UNTR	PT UNITED TRACTORS	2016	1.878661638
111	WIKA	PT WIJAYA KARYA	2016	1.293243803

Lampiran 3

Variabel Independen- Pengungkapan *Sustainability Report*

NO	KODE	NAMA PERUSAHAAN	TAHUN	SRDI
1	AALI	AGRO ASRI LESTARI	2012	0.604026846
2	ADMF	ADIRA FINANCE	2012	0.510067114
3	ANTM	PT ANEKA TAMBANG	2012	0.617449664
4	ASII	ASTRA INTERNASIONAL	2012	0.590604027
5	BBNI	BANK BNI	2012	0.563758389
6	BBRI	BANK BRI	2012	0.610738255
7	BBTN	BANK BTN	2012	0.362416107
8	BNGA	BANK CIMB NIAGA	2012	0.375838926
9	BNII	MAYBANK INDONESIA	2012	0.523489933
10	INCO	PT VALE INDONESIA	2012	0.66442953
11	INDY	INDIKA ENERGY	2012	0.624161074
12	JSMR	JASA MARGA PERSERO Tbk.	2012	0.651006711
13	PTBA	PT BATU BARA BUKIT ASAM	2012	0.684563758
14	SMCB	PT HOLCIM INDONESIA	2012	0.516778523
15	TLKM	PT TELEKOMUNIKASI INDONESIA	2012	0.697986577
16	UNSP	BAKRIE SUMATERA PLANTATION Tbk.	2012	0.630872483
17	WIKA	PT WIJAYA KARYA	2012	0.677852349
18	AALI	AGRO ASRI LESTARI	2013	0.624161074
19	ADHI	ADHI	2013	0.234899329
20	ADMF	ADIRA FINANCE	2013	0.543624161
21	ANTM	PT ANEKA TAMBANG	2013	0.590604027
22	ASII	ASTRA INTERNASIONAL	2013	0.416107
23	BBNI	BANK BNI	2013	0.362416107
24	BBRI	BANK BRI	2013	0.617449664
25	BBTN	BANK BTN	2013	0.32885906
26	BDMN	BANK DANAMON	2013	0.382550336
27	BNGA	BANK CIMB NIAGA	2013	0.348993289
28	BNII	MAYBANK INDONESIA	2013	0.362416107
29	INCO	PT VALE INDONESIA	2013	0.55704698
30	INDY	INDIKA ENERGY	2013	0.375838926
31	INTP	INDOCEMENT TUNGGAL PRAKARSA Tbk.	2013	0.644295302
32	ITMG	INDO TAMBANGRAYA MEGAH Tbk.	2013	0.409395973

Lanjutan Lampiran 3

NO	KODE	NAMA PERUSAHAAN	TAHUN	SRDI
33	JSMR	JASA MARGA PERSERO Tbk.	2013	0.409395973
34	PGAS	PERUSAHAAN GAS NEGARA PERSERO Tbk.	2013	0.429530201
35	PTBA	PT BATU BARA BUKIT ASAM	2013	0.691275168
36	SMCB	PT HOLCIM INDONESIA	2013	0.704697987
37	SMGR	PT SEMEN INDONESIA	2013	0.604026846
38	TLKM	PT TELEKOMUNIKASI INDONESIA	2013	0.456375839
39	UNSP	BAKRIE SUMATERA PLANTATION Tbk.	2013	0.510067114
40	UNTR	PT UNITED TRACTORS	2013	0.436241611
41	WIKA	PT WIJAYA KARYA	2013	0.456375839
42	AALI	AGRO ASRI LESTARI	2014	0.604026846
43	ADHI	ADHI	2014	0.255033557
44	ADMF	ADIRA FINANCE	2014	0.44295302
45	ANTM	PT ANEKA TAMBANG	2014	0.543624161
46	ASII	ASTRA INTERNASIONAL	2014	0.503355705
47	BBNI	BANK BNI	2014	0.429530201
48	BBRI	BANK BRI	2014	0.637583893
49	BBTN	BANK BTN	2014	0.496644295
50	BDMN	BANK DANAMON	2014	0.389261745
51	BNGA	BANK CIMB NIAGA	2014	0.355704698
52	BNII	MAYBANK INDONESIA	2014	0.382550336
53	BNLI	BANK PERMATA	2014	0.389261745
54	INCO	PT VALE INDONESIA	2014	0.583892617
55	INDY	INDIKA ENERGY	2014	0.295302013
56	INTP	INDOCEMENT TUNGGAL PRAKARSA Tbk.	2014	0.691275168
57	ITMG	INDO TAMBANGRAYA MEGAH Tbk.	2014	0.516778523
58	PGAS	PERUSAHAAN GAS NEGARA PERSERO Tbk.	2014	0.530201342
59	PTBA	PT BATU BARA BUKIT ASAM	2014	0.798657718
60	SMCB	PT HOLCIM INDONESIA	2014	0.677852349
61	SMGR	PT SEMEN INDONESIA	2014	0.644295302
62	TLKM	PT TELEKOMUNIKASI INDONESIA	2014	0.469798658
63	UNSP	BAKRIE SUMATERA PLANTATION Tbk.	2014	0.409395973
64	UNTR	PT UNITED TRACTORS	2014	0.476510067
65	WIKA	PT WIJAYA KARYA	2014	0.604026846

Lanjutan Lampiran 3

NO	KODE	NAMA PERUSAHAAN	TAHUN	SRDI
66	AALI	AGRO ASRI LESTARI	2015	0.711409396
67	ADHI	ADHI	2015	0.275167785
68	ADMF	ADIRA FINANCE	2015	0.496644295
69	ANTM	PT ANEKA TAMBANG	2015	0.771812081
70	ASII	ASTRA INTERNASIONAL	2015	0.503355705
71	BBCA	BANK BNI	2015	0.362416
72	BBNI	BANK BRI	2015	0.409395973
73	BBRI	BANK BTN	2015	0.604026846
74	BBTN	BANK DANAMON	2015	0.624161074
75	BDMN	BANK CIMB NIAGA	2015	0.402684564
76	BNGA	MAYBANK INDONESIA	2015	0.375838926
77	BNII	PT VALE INDONESIA	2015	0.33557
78	BNLI	INDIKA ENERGY	2015	0.348993289
79	INCO	INDOCEMENT TUNGGAL PRAKARSA Tbk.	2015	0.55033557
80	INDY	INDO TAMBANGRAYA MEGAH Tbk.	2015	0.295302013
81	INTP	JASA MARGA PERSERO Tbk.	2015	0.657718121
82	ITMG	PERUSAHAAN GAS NEGARA PERSERO Tbk.	2015	0.429530201
83	JSMR	PT BATU BARA BUKIT ASAM	2015	0.38255
84	PGAS	PT HOLCIM INDONESIA	2015	0.510067114
85	PTBA	PT SEMEN INDONESIA	2015	0.832214765
86	SMCB	PT TELEKOMUNIKASI INDONESIA	2015	0.516778523
87	SMGR	BAKRIE SUMATERA PLANTATION Tbk.	2015	0.523489933
88	TLKM	PT UNITED TRACTORS	2015	0.416107383
89	UNSP	PT WIJAYA KARYA	2015	0.389261745
90	UNTR	AGRO ASRI LESTARI	2015	0.463087248
91	WIKA	ADHI	2015	0.463087248
92	AALI	ADIRA FINANCE	2016	0.718120805
93	ADHI	PT ANEKA TAMBANG	2016	0.261744966
94	ASII	ASTRA INTERNASIONAL	2016	0.469798658
95	BBCA	BANK BNI	2016	0.167785235
96	BBNI	BANK BRI	2016	0.355704698
97	BBRI	BANK BTN	2016	0.302013423
98	BBTN	BANK DANAMON	2016	0.523489933
99	BNGA	BANK CIMB NIAGA	2016	0.348993289

Lanjutan Lampiran 3

NO	KODE	NAMA PERUSAHAAN	TAHUN	SRDI
100	BNII	MAYBANK INDONESIA	2016	0.416107383
101	BNLI	BANK PERMATA	2016	0.369127517
102	INCO	PT VALE INDONESIA	2016	0.288590604
103	INTP	INDOCEMENT TUNGGAL PRAKARSA Tbk.	2016	0.315436242
104	ITMG	INDO TAMBANGRAYA MEGAH Tbk.	2016	0.409395973
105	PGAS	PERUSAHAAN GAS NEGARA PERSERO Tbk.	2016	0.55704698
106	PTBA	PT BATU BARA BUKIT ASAM	2016	0.66442953
107	SMCB	PT HOLCIM INDONESIA	2016	0.463087248
108	SMGR	PT SEMEN INDONESIA	2016	0.375838926
109	TLKM	PT TELEKOMUNIKASI INDONESIA	2016	0.409395973
110	UNTR	PT UNITED TRACTORS	2016	0.463087248
111	WIKA	PT WIJAYA KARYA	2016	0.308724832

Lampiran 4

Variabel Moderasi-Profitabilitas

NO	KODE	NAMA PERUSAHAAN	TAHUN	PROFITABILITAS
1	AALI	AGRO ASRI LESTARI	2012	0.202922909
2	ADMF	ADIRA FINANCE	2012	0.055719267
3	ANTM	PT ANEKA TAMBANG	2012	0.151868966
4	ASII	ASTRA INTERNASIONAL	2012	0.124768206
5	BBNI	BANK BNI	2012	0.021146978
6	BBRI	BANK BRI	2012	0.033894673
7	BBTN	BANK BTN	2012	0.01220563
8	BNGA	BANK CIMB NIAGA	2012	0.021527823
9	BNII	MAYBANK INDONESIA	2012	0.010461178
10	INCO	PT VALE INDONESIA	2012	0.028929141
11	INDY	INDIKA ENERGY	2012	0.0371528
12	JSMR	JASA MARGA PERSERO Tbk.	2012	0.062044115
13	PTBA	PT BATU BARA BUKIT ASAM	2012	0.228566686
14	SMCB	PT HOLCIM INDONESIA	2012	0.111007036
15	TLKM	PT TELEKOMUNIKASI INDONESIA	2012	0.164875324

Lanjutan Lampiran 4

NO	KODE	NAMA PERUSAHAAN	TAHUN	PROFITABILITAS
16	UNSP	BAKRIE SUMATERA PLANTATION Tbk.	2012	0.056238745
17	WIKA	PT WIJAYA KARYA	2012	0.046150324
18	AALI	AGRO ASRI LESTARI	2013	0.127184644
19	ADHI	ADHI	2013	0.042016204
20	ADMF	ADIRA FINANCE	2013	0.05508106
21	ANTM	PT ANEKA TAMBANG	2013	0.018748921
22	ASII	ASTRA INTERNASIONAL	2013	0.10419451
23	BBNI	BANK BNI	2013	0.023426428
24	BBRI	BANK BRI	2013	0.034102383
25	BBTN	BANK BTN	2013	0.011909463
26	BDMN	BANK DANAMON	2013	0.022575879
27	BNGA	BANK CIMB NIAGA	2013	0.019629102
28	BNII	MAYBANK INDONESIA	2013	0.011172909
29	INCO	PT VALE INDONESIA	2013	0.016944315
30	INDY	INDIKA ENERGY	2013	-0.023225645
31	INTP	INDOCEMENT TUNGGAL PRAKARSA Tbk.	2013	0.188380825
32	ITMG	INDO TAMBANGRAYA MEGAH Tbk.	2013	0.165560935
33	JSMR	JASA MARGA PERSERO Tbk.	2013	0.043636941
34	PGAS	PERUSAHAAN GAS NEGARA PERSERO Tbk.	2013	0.204870197
35	PTBA	PT BATU BARA BUKIT ASAM	2013	0.158795614
36	SMCB	PT HOLCIM INDONESIA	2013	0.063934585
37	SMGR	PT SEMEN INDONESIA	2013	0.173881034
38	TLKM	PT TELEKOMUNIKASI INDONESIA	2013	0.15857633
39	UNSP	BAKRIE SUMATERA PLANTATION Tbk.	2013	-0.142436551
40	UNTR	PT UNITED TRACTORS	2013	0.083657432
41	WIKA	PT WIJAYA KARYA	2013	0.049573126
42	AALI	AGRO ASRI LESTARI	2014	0.141245206
43	ADHI	ADHI	2014	0.031232456
44	ADMF	ADIRA FINANCE	2014	0.026466477
45	ANTM	PT ANEKA TAMBANG	2014	-0.035169623
46	ASII	ASTRA INTERNASIONAL	2014	0.093738481
47	BBNI	BANK BNI	2014	0.025996309
48	BBRI	BANK BRI	2014	0.030243398
49	BBTN	BANK BTN	2014	0.007716304

Lanjutan Lampiran 4

NO	KODE	NAMA PERUSAHAAN	TAHUN	PROFITABILITAS
50	BDMN	BANK DANAMON	2014	0.013707431
51	BNGA	BANK CIMB NIAGA	2014	0.010052392
52	BNII	MAYBANK INDONESIA	2014	0.004970246
53	BNLI	BANK PERMATA	2014	0.00856203
54	INCO	PT VALE INDONESIA	2014	0.073803332
55	INDY	INDIKA ENERGY	2014	-0.013316261
56	INTP	INDOCEMENT TUNGGAL PRAKARSA Tbk.	2014	0.1825866
57	ITMG	INDO TAMBANGRAYA MEGAH Tbk.	2014	0.153148205
58	PGAS	PERUSAHAAN GAS NEGARA PERSERO Tbk.	2014	0.120291516
59	PTBA	PT BATU BARA BUKIT ASAM	2014	0.136322635
60	SMCB	PT HOLCIM INDONESIA	2014	0.038898244
61	SMGR	PT SEMEN INDONESIA	2014	0.162425514
62	TLKM	PT TELEKOMUNIKASI INDONESIA	2014	0.152212641
63	UNSP	BAKRIE SUMATERA PLANTATION Tbk.	2014	-0.029240519
64	UNTR	PT UNITED TRACTORS	2014	0.080275451
65	WIKA	PT WIJAYA KARYA	2014	0.047174879
66	AALI	AGRO ASRI LESTARI	2015	0.032338788
67	ADHI	ADHI	2015	0.027744394
68	ADMF	ADIRA FINANCE	2015	0.023963057
69	ANTM	PT ANEKA TAMBANG	2015	-0.047463846
70	ASII	ASTRA INTERNASIONAL	2015	0.063613584
71	BBCA	BANK BNI	2015	0.030344203
72	BBNI	BANK BRI	2015	0.017972113
73	BBRI	BANK BTN	2015	0.028927626
74	BBTN	BANK DANAMON	2015	0.010773139
75	BDMN	BANK CIMB NIAGA	2015	0.013129804
76	BNGA	MAYBANK INDONESIA	2015	0.001791444
77	BNII	PT VALE INDONESIA	2015	0.007255229
78	BNLI	INDIKA ENERGY	2015	0.001352635
79	INCO	INDOCEMENT TUNGGAL PRAKARSA Tbk.	2015	0.022060921
80	INDY	INDO TAMBANGRAYA MEGAH Tbk.	2015	-0.035735404
81	INTP	JASA MARGA PERSERO Tbk.	2015	0.157630952
82	ITMG	PERUSAHAAN GAS NEGARA PERSERO Tbk.	2015	0.053554804

Lanjutan Lampiran 4

NO	KODE	NAMA PERUSAHAAN	TAHUN	PROFITABILITAS
83	JSMR	PT BATU BARA BUKIT ASAM	2015	0.035921067
84	PGAS	PT HOLCIM INDONESIA	2015	0.062010396
85	PTBA	PT SEMEN INDONESIA	2015	0.120581616
86	SMCB	PT TELEKOMUNIKASI INDONESIA	2015	0.010110345
87	SMGR	BAKRIE SUMATERA PLANTATION Tbk.	2015	0.118612611
88	TLKM	PT UNITED TRACTORS	2015	0.140317621
89	UNSP	PT WIJAYA KARYA	2015	-0.062496396
90	UNTR	AGRO ASRI LESTARI	2015	0.045247038
91	WIKA	ADHI	2015	0.035863202
92	AALI	ADIRA FINANCE	2016	0.087273522
93	ADHI	PT ANEKA TAMBANG	2016	0.015680565
94	ASII	ASTRA INTERNASIONAL	2016	0.069893643
95	BBCA	BANK BNI	2016	0.030487808
96	BBNI	BANK BRI	2016	0.018921381
97	BBRI	BANK BTN	2016	0.026132752
98	BBTN	BANK DANAMON	2016	0.012228247
99	BNGA	BANK CIMB NIAGA	2016	0.008617387
100	BNII	MAYBANK INDONESIA	2016	0.01180279
101	BNLI	BANK PERMATA	2016	-0.039166202
102	INCO	PT VALE INDONESIA	2016	0.00085644
103	INTP	INDOCEMENT TUNGGAL PRAKARSA Tbk.	2016	0.12836632
104	ITMG	INDO TAMBANGRAYA MEGAH Tbk.	2016	0.10804254
105	PGAS	PERUSAHAAN GAS NEGARA PERSERO Tbk.	2016	0.045153206
106	PTBA	PT BATU BARA BUKIT ASAM	2016	0.108975057
107	SMCB	PT HOLCIM INDONESIA	2016	-0.014399741
108	SMGR	PT SEMEN INDONESIA	2016	0.102540247
109	TLKM	PT TELEKOMUNIKASI INDONESIA	2016	0.162417669
110	UNTR	PT UNITED TRACTORS	2016	0.079768385
111	WIKA	PT WIJAYA KARYA	2016	0.036889794

Lampiran 5

Variabel Moderasi-Komisaris Independen

NO	KODE	NAMA PERUSAHAAN	TAHUN	KI
1	AALI	AGRO ASRI LESTARI	2012	43%
2	ADMF	ADIRA FINANCE	2012	43%
3	ANTM	PT ANEKA TAMBANG	2012	33%
4	ASII	ASTRA INTERNASIONAL	2012	30%
5	BBNI	BANK BNI	2012	57%
6	BBRI	BANK BRI	2012	63%
7	BBTN	BANK BTN	2012	50%
8	BNGA	BANK CIMB NIAGA	2012	33%
9	BNII	MAYBANK INDONESIA	2012	57%
10	INCO	PT VALE INDONESIA	2012	30%
11	INDY	INDIKA ENERGY	2012	40%
12	JSMR	JASA MARGA PERSERO Tbk.	2012	33%
13	PTBA	PT BATU BARA BUKIT ASAM	2012	33%
14	SMCB	PT HOLCIM INDONESIA	2012	50%
15	TLKM	PT TELEKOMUNIKASI INDONESIA	2012	40%
16	UNSP	BAKRIE SUMATERA PLANTATION Tbk.	2012	50%
17	WIKA	PT WIJAYA KARYA	2012	33%
18	AALI	AGRO ASRI LESTARI	2013	43%
19	ADHI	ADHI	2013	33%
20	ADMF	ADIRA FINANCE	2013	50%
21	ANTM	PT ANEKA TAMBANG	2013	33%
22	ASII	ASTRA INTERNASIONAL	2013	30%
23	BBNI	BANK BNI	2013	57%
24	BBRI	BANK BRI	2013	38%
25	BBTN	BANK BTN	2013	50%
26	BDMN	BANK DANAMON	2013	50%
27	BNGA	BANK CIMB NIAGA	2013	50%
28	BNII	MAYBANK INDONESIA	2013	50%
29	INCO	PT VALE INDONESIA	2013	30%
30	INDY	INDIKA ENERGY	2013	33%
31	INTP	INDOCEMENT TUNGGAL PRAKARSA Tbk.	2013	43%
32	ITMG	INDO TAMBANGRAYA MEGAH Tbk.	2013	33%
33	JSMR	JASA MARGA PERSERO Tbk.	2013	20%

Lanjutan Lampiran 5

NO	KODE	NAMA PERUSAHAAN	TAHUN	KI
34	PGAS	PERUSAHAAN GAS NEGARA PERSERO Tbk.	2013	33%
35	PTBA	PT BATU BARA BUKIT ASAM	2013	33%
36	SMCB	PT HOLCIM INDONESIA	2013	50%
37	SMGR	PT SEMEN INDONESIA	2013	33%
38	TLKM	PT TELEKOMUNIKASI INDONESIA	2013	33%
39	UNSP	BAKRIE SUMATERA PLANTATION Tbk.	2013	43%
40	UNTR	PT UNITED TRACTORS	2013	43%
41	WIKA	PT WIJAYA KARYA	2013	33%
42	AALI	AGRO ASRI LESTARI	2014	33%
43	ADHI	ADHI	2014	33%
44	ADMF	ADIRA FINANCE	2014	50%
45	ANTM	PT ANEKA TAMBANG	2014	33%
46	ASII	ASTRA INTERNASIONAL	2014	36%
47	BBNI	BANK BNI	2014	50%
48	BBRI	BANK BRI	2014	71%
49	BBTN	BANK BTN	2014	50%
50	BDMN	BANK DANAMON	2014	33%
51	BNGA	BANK CIMB NIAGA	2014	50%
52	BNII	MAYBANK INDONESIA	2014	50%
53	BNLI	BANK PERMATA	2014	50%
54	INCO	PT VALE INDONESIA	2014	30%
55	INDY	INDIKA ENERGY	2014	33%
56	INTP	INDOCEMENT TUNGGAL PRAKARSA Tbk.	2014	43%
57	ITMG	INDO TAMBANGRAYA MEGAH Tbk.	2014	33%
58	PGAS	PERUSAHAAN GAS NEGARA PERSERO Tbk.	2014	33%
59	PTBA	PT BATU BARA BUKIT ASAM	2014	33%
60	SMCB	PT HOLCIM INDONESIA	2014	50%
61	SMGR	PT SEMEN INDONESIA	2014	29%
62	TLKM	PT TELEKOMUNIKASI INDONESIA	2014	43%
63	UNSP	BAKRIE SUMATERA PLANTATION Tbk.	2014	50%
64	UNTR	PT UNITED TRACTORS	2014	43%
65	WIKA	PT WIJAYA KARYA	2014	40%
66	AALI	AGRO ASRI LESTARI	2015	40%
67	ADHI	ADHI	2015	33%
68	ADMF	ADIRA FINANCE	2015	40%
69	ANTM	PT ANEKA TAMBANG	2015	33%

Lanjutan Lampiran 5

NO	KODE	NAMA PERUSAHAAN	TAHUN	KI
70	ASII	ASTRA INTERNASIONAL	2015	36%
71	BBCA	BANK BNI	2015	60%
72	BBNI	BANK BRI	2015	33%
73	BBRI	BANK BTN	2015	63%
74	BBTN	BANK DANAMON	2015	57%
75	BDMN	BANK CIMB NIAGA	2015	57%
76	BNGA	MAYBANK INDONESIA	2015	50%
77	BNII	PT VALE INDONESIA	2015	50%
78	BNLI	INDIKA ENERGY	2015	50%
79	INCO	INDOCEMENT TUNGGAL PRAKARSA Tbk.	2015	30%
80	INDY	INDO TAMBANGRAYA MEGAH Tbk.	2015	33%
81	INTP	JASA MARGA PERSERO Tbk.	2015	43%
82	ITMG	PERUSAHAAN GAS NEGARA PERSERO Tbk.	2015	33%
83	JSMR	PT BATU BARA BUKIT ASAM	2015	33%
84	PGAS	PT HOLCIM INDONESIA	2015	33%
85	PTBA	PT SEMEN INDONESIA	2015	33%
86	SMCB	PT TELEKOMUNIKASI INDONESIA	2015	43%
87	SMGR	BAKRIE SUMATERA PLANTATION Tbk.	2015	29%
88	TLKM	PT UNITED TRACTORS	2015	43%
89	UNSP	PT WIJAYA KARYA	2015	50%
90	UNTR	AGRO ASRI LESTARI	2015	33%
91	WIKA	ADHI	2015	43%
92	AALI	ADIRA FINANCE	2016	40%
93	ADHI	PT ANEKA TAMBANG	2016	33%
94	ASII	ASTRA INTERNASIONAL	2016	33%
95	BBCA	BANK BNI	2016	60%
96	BBNI	BANK BRI	2016	50%
97	BBRI	BANK BTN	2016	56%
98	BBTN	BANK DANAMON	2016	57%
99	BNGA	BANK CIMB NIAGA	2016	50%
100	BNII	MAYBANK INDONESIA	2016	50%
101	BNLI	BANK PERMATA	2016	50%
102	INCO	PT VALE INDONESIA	2016	50%
103	INTP	INDOCEMENT TUNGGAL PRAKARSA Tbk.	2016	43%
104	ITMG	INDO TAMBANGRAYA MEGAH Tbk.	2016	33%
105	PGAS	PERUSAHAAN GAS NEGARA PERSERO Tbk.	2016	33%

Lanjutan Lampiran 5

NO	KODE	NAMA PERUSAHAAN	TAHUN	KI
106	PTBA	PT BATU BARA BUKIT ASAM	2016	33%
107	SMCB	PT HOLCIM INDONESIA	2016	50%
108	SMGR	PT SEMEN INDONESIA	2016	29%
109	TLKM	PT TELEKOMUNIKASI INDONESIA	2016	43%
110	UNTR	PT UNITED TRACTORS	2016	33%
111	WIKA	PT WIJAYA KARYA	2016	33%

Lampiran 6

Variabel Kontrol-Ukuran Perusahaan

NO	KODE	NAMA PERUSAHAAN	TAHUN	SIZE
1	AALI	AGRO ASRI LESTARI	2012	30.15031
2	ADMF	ADIRA FINANCE	2012	30.86815
3	ANTM	PT ANEKA TAMBANG	2012	30.61207
4	ASII	ASTRA INTERNASIONAL	2012	32.83653
5	BBNI	BANK BNI	2012	33.44007
6	BBRI	BANK BRI	2012	33.94337
7	BBTN	BANK BTN	2012	32.34727
8	BNGA	BANK CIMB NIAGA	2012	32.91632
9	BNII	MAYBANK INDONESIA	2012	32.38265
10	INCO	PT VALE INDONESIA	2012	21.57046
11	INDY	INDIKA ENERGY	2012	21.57652
12	JSMR	JASA MARGA PERSERO Tbk.	2012	30.83999
13	PTBA	PT BATU BARA BUKIT ASAM	2012	30.1749
14	SMCB	PT HOLCIM INDONESIA	2012	30.12987
15	TLKM	PT TELEKOMUNIKASI INDONESIA	2012	32.34387
16	UNSP	BAKRIE SUMATERA PLANTATION Tbk.	2012	30.57458
17	WIKA	PT WIJAYA KARYA	2012	30.02392
18	AALI	AGRO ASRI LESTARI	2013	30.33661
19	ADHI	ADHI	2013	29.90531
20	ADMF	ADIRA FINANCE	2013	31.06483
21	ANTM	PT ANEKA TAMBANG	2013	30.71591

Lanjutan Lampiran 6

NO	KODE	NAMA PERUSAHAAN	TAHUN	SIZE
22	ASII	ASTRA INTERNASIONAL	2013	32.99697
23	BBNI	BANK BNI	2013	33.58855
24	BBRI	BANK BRI	2013	34.07066
25	BBTN	BANK BTN	2013	32.50751
26	BDMN	BANK DANAMON	2013	32.84725
27	BNGA	BANK CIMB NIAGA	2013	33.01948
28	BNII	MAYBANK INDONESIA	2013	32.57656
29	INCO	PT VALE INDONESIA	2013	30.95622
30	INDY	INDIKA ENERGY	2013	30.97154
31	INTP	INDOCEMENT TUNGGAL PRAKARSA Tbk.	2013	30.9122
32	ITMG	INDO TAMBANGRAYA MEGAH Tbk.	2013	30.4624
33	JSMR	JASA MARGA PERSERO Tbk.	2013	30.97622
34	PGAS	PERUSAHAAN GAS NEGARA PERSERO Tbk.	2013	31.60476
35	PTBA	PT BATU BARA BUKIT ASAM	2013	30.08866
36	SMCB	PT HOLCIM INDONESIA	2013	30.33205
37	SMGR	PT SEMEN INDONESIA	2013	31.0583
38	TLKM	PT TELEKOMUNIKASI INDONESIA	2013	32.48267
39	UNSP	BAKRIE SUMATERA PLANTATION Tbk.	2013	30.52224
40	UNTR	PT UNITED TRACTORS	2013	31.68041
41	WIKA	PT WIJAYA KARYA	2013	30.16432
42	AALI	AGRO ASRI LESTARI	2014	28.59468
43	ADHI	ADHI	2014	29.97847
44	ADMF	ADIRA FINANCE	2014	31.02991
45	ANTM	PT ANEKA TAMBANG	2014	30.72407
46	ASII	ASTRA INTERNASIONAL	2014	33.09498
47	BBNI	BANK BNI	2014	33.66308
48	BBRI	BANK BRI	2014	34.31807
49	BBTN	BANK BTN	2014	32.60483
50	BDMN	BANK DANAMON	2014	32.90765
51	BNGA	BANK CIMB NIAGA	2014	33.08276
52	BNII	MAYBANK INDONESIA	2014	32.59609
53	BNLI	BANK PERMATA	2014	32.85327
54	INCO	PT VALE INDONESIA	2014	30.9996
55	INDY	INDIKA ENERGY	2014	30.98064
56	INTP	INDOCEMENT TUNGGAL PRAKARSA Tbk.	2014	30.99434
57	ITMG	INDO TAMBANGRAYA MEGAH Tbk.	2014	30.41994

Lanjutan Lampiran 6

NO	KODE	NAMA PERUSAHAAN	TAHUN	SIZE
58	PGAS	PERUSAHAAN GAS NEGARA PERSERO Tbk.	2014	31.97898
59	PTBA	PT BATU BARA BUKIT ASAM	2014	30.32646
60	SMCB	PT HOLCIM INDONESIA	2014	30.47566
61	SMGR	PT SEMEN INDONESIA	2014	31.16659
62	TLKM	PT TELEKOMUNIKASI INDONESIA	2014	32.57904
63	UNSP	BAKRIE SUMATERA PLANTATION Tbk.	2014	30.48988
64	UNTR	PT UNITED TRACTORS	2014	31.73022
65	WIKA	PT WIJAYA KARYA	2014	30.39829
66	AALI	AGRO ASRI LESTARI	2015	30.69965
67	ADHI	ADHI	2015	30.45008
68	ADMF	ADIRA FINANCE	2015	30.95405
69	ANTM	PT ANEKA TAMBANG	2015	31.04404
70	ASII	ASTRA INTERNASIONAL	2015	33.13405
71	BBCA	BANK BNI	2015	34.01853
72	BBNI	BANK BRI	2015	33.86267
73	BBRI	BANK BTN	2015	34.40915
74	BBTN	BANK DANAMON	2015	32.7774
75	BDMN	BANK CIMB NIAGA	2015	32.86777
76	BNGA	MAYBANK INDONESIA	2015	33.10685
77	BNII	PT VALE INDONESIA	2015	32.6912
78	BNLI	INDIKA ENERGY	2015	32.83881
79	INCO	INDOCEMENT TUNGGAL PRAKARSA Tbk.	2015	31.08351
80	INDY	INDO TAMBANGRAYA MEGAH Tbk.	2015	31.021
81	INTP	JASA MARGA PERSERO Tbk.	2015	30.95023
82	ITMG	PERUSAHAAN GAS NEGARA PERSERO Tbk.	2015	30.41945
83	JSMR	PT BATU BARA BUKIT ASAM	2015	31.23448
84	PGAS	PT HOLCIM INDONESIA	2015	32.12636
85	PTBA	PT SEMEN INDONESIA	2015	30.45798
86	SMCB	PT TELEKOMUNIKASI INDONESIA	2015	30.48297
87	SMGR	BAKRIE SUMATERA PLANTATION Tbk.	2015	31.27263
88	TLKM	PT UNITED TRACTORS	2015	32.74405
89	UNSP	PT WIJAYA KARYA	2015	30.45991
90	UNTR	AGRO ASRI LESTARI	2015	31.75355
91	WIKA	ADHI	2015	30.60667
92	AALI	ADIRA FINANCE	2016	30.81845
93	ADHI	PT ANEKA TAMBANG	2016	30.63151

Lanjutan Lampiran 6

NO	KODE	NAMA PERUSAHAAN	TAHUN	SIZE
94	ASII	ASTRA INTERNASIONAL	2016	33.19881
95	BBCA	BANK BNI	2016	34.14831
96	BBNI	BANK BRI	2016	34.03299
97	BBRI	BANK BTN	2016	34.54241
98	BBTN	BANK DANAMON	2016	32.99778
99	BNGA	BANK CIMB NIAGA	2016	33.11819
100	BNII	MAYBANK INDONESIA	2016	32.74709
101	BNLI	BANK PERMATA	2016	32.74016
102	INCO	PT VALE INDONESIA	2016	31.01595
103	INTP	INDOCEMENT TUNGGAL PRAKARSA Tbk.	2016	31.03723
104	ITMG	INDO TAMBANGRAYA MEGAH Tbk.	2016	30.40642
105	PGAS	PERUSAHAAN GAS NEGARA PERSERO Tbk.	2016	32.13791
106	PTBA	PT BATU BARA BUKIT ASAM	2016	30.55293
107	SMCB	PT HOLCIM INDONESIA	2016	30.61484
108	SMGR	PT SEMEN INDONESIA	2016	31.42035
109	TLKM	PT TELEKOMUNIKASI INDONESIA	2016	32.82181
110	UNTR	PT UNITED TRACTORS	2016	31.78977
111	WIKA	PT WIJAYA KARYA	2016	31.06812

Lampiran 7

Variabel Kontrol-*Leverage*

NO	KODE	NAMA PERUSAHAAN	TAHUN	LEVERAGE
1	AALI	AGRO ASRI LESTARI	2012	0.326137209
2	ADMF	ADIRA FINANCE	2012	4.055924351
3	ANTM	PT ANEKA TAMBANG	2012	0.535852208
4	ASII	ASTRA INTERNASIONAL	2012	1.029460886
5	BBNI	BANK BNI	2012	6.65769736
6	BBRI	BANK BRI	2012	7.497559692
7	BBTN	BANK BTN	2012	0.908017893
8	BNGA	BANK CIMB NIAGA	2012	7.715047145
9	BNII	MAYBANK INDONESIA	2012	10.97548403
10	INCO	PT VALE INDONESIA	2012	0.355311909
11	INDY	INDIKA ENERGY	2012	1.290638812

Lanjutan Lampiran 7

NO	KODE	NAMA PERUSAHAAN	TAHUN	LEVERAGE
12	JSMR	JASA MARGA PERSERO Tbk.	2012	1.529024698
13	PTBA	PT BATU BARA BUKIT ASAM	2012	0.496617057
14	SMCB	PT HOLCIM INDONESIA	2012	0.445525784
15	TLKM	PT TELEKOMUNIKASI INDONESIA	2012	0.662769865
16	UNSP	BAKRIE SUMATERA PLANTATION Tbk.	2012	1.398580476
17	WIKA	PT WIJAYA KARYA	2012	2.889547854
18	AALI	AGRO ASRI LESTARI	2013	0.457284328
19	ADHI	ADHI	2013	5.277814237
20	ADMF	ADIRA FINANCE	2013	4.146876155
21	ANTM	PT ANEKA TAMBANG	2013	0.709081854
22	ASII	ASTRA INTERNASIONAL	2013	1.015237127
23	BBNI	BANK BNI	2013	7.108775037
24	BBRI	BANK BRI	2013	6.893650269
25	BBTN	BANK BTN	2013	10.35004153
26	BDMN	BANK DANAMON	2013	4.838983528
27	BNGA	BANK CIMB NIAGA	2013	7.454786393
28	BNII	MAYBANK INDONESIA	2013	10.32674154
29	INCO	PT VALE INDONESIA	2013	0.330668053
30	INDY	INDIKA ENERGY	2013	1.438564563
31	INTP	INDOCEMENT TUNGGAL PRAKARSA Tbk.	2013	0.157959937
32	ITMG	INDO TAMBANGRAYA MEGAH Tbk.	2013	0.444345882
33	JSMR	JASA MARGA PERSERO Tbk.	2013	1.6103246
34	PGAS	PERUSAHAAN GAS NEGARA PERSERO Tbk.	2013	0.599857936
35	PTBA	PT BATU BARA BUKIT ASAM	2013	0.546321698
36	SMCB	PT HOLCIM INDONESIA	2013	0.697831983
37	SMGR	PT SEMEN INDONESIA	2013	0.412260051
38	TLKM	PT TELEKOMUNIKASI INDONESIA	2013	0.652601261
39	UNSP	BAKRIE SUMATERA PLANTATION Tbk.	2013	2.701376414
40	UNTR	PT UNITED TRACTORS	2013	0.609088842
41	WIKA	PT WIJAYA KARYA	2013	2.90304407
42	AALI	AGRO ASRI LESTARI	2014	0.56775932
43	ADHI	ADHI	2014	4.971237701
44	ADMF	ADIRA FINANCE	2014	6.358420226
45	ANTM	PT ANEKA TAMBANG	2014	0.847863616
46	ASII	ASTRA INTERNASIONAL	2014	0.961611981
47	BBNI	BANK BNI	2014	5.590648008

Lanjutan Lampiran 7

NO	KODE	NAMA PERUSAHAAN	TAHUN	LEVERAGE
48	BBRI	BANK BRI	2014	7.205198655
49	BBTN	BANK BTN	2014	10.84426939
50	BDMN	BANK DANAMON	2014	4.927415787
51	BNGA	BANK CIMB NIAGA	2014	7.196180084
52	BNII	MAYBANK INDONESIA	2014	8.782796388
53	BNLI	BANK PERMATA	2014	9.842637729
54	INCO	PT VALE INDONESIA	2014	0.307410915
55	INDY	INDIKA ENERGY	2014	1.509967275
56	INTP	INDOCEMENT TUNGGAL PRAKARSA Tbk.	2014	0.165430903
57	ITMG	INDO TAMBANGRAYA MEGAH Tbk.	2014	0.454833167
58	PGAS	PERUSAHAAN GAS NEGARA PERSERO Tbk.	2014	1.097654403
59	PTBA	PT BATU BARA BUKIT ASAM	2014	0.708256591
60	SMCB	PT HOLCIM INDONESIA	2014	0.963255281
61	SMGR	PT SEMEN INDONESIA	2014	0.372452034
62	TLKM	PT TELEKOMUNIKASI INDONESIA	2014	0.635936139
63	UNSP	BAKRIE SUMATERA PLANTATION Tbk.	2014	0.761822599
64	UNTR	PT UNITED TRACTORS	2014	0.562911754
65	WIKA	PT WIJAYA KARYA	2014	2.196612683
66	AALI	AGRO ASRI LESTARI	2015	0.838854832
67	ADHI	ADHI	2015	2.246926691
68	ADMF	ADIRA FINANCE	2015	5.362198905
69	ANTM	PT ANEKA TAMBANG	2015	0.657330167
70	ASII	ASTRA INTERNASIONAL	2015	0.939691622
71	BBCA	BANK BNI	2015	5.600510572
72	BBNI	BANK BRI	2015	5.261818365
73	BBRI	BANK BTN	2015	6.764944903
74	BBTN	BANK DANAMON	2015	11.39583446
75	BDMN	BANK CIMB NIAGA	2015	4.496368317
76	BNGA	MAYBANK INDONESIA	2015	7.328255133
77	BNII	PT VALE INDONESIA	2015	9.011835726
78	BNLI	INDIKA ENERGY	2015	8.710884277
79	INCO	INDOCEMENT TUNGGAL PRAKARSA Tbk.	2015	0.248208655
80	INDY	INDO TAMBANGRAYA MEGAH Tbk.	2015	1.586085831
81	INTP	JASA MARGA PERSERO Tbk.	2015	0.158066618
82	ITMG	PERUSAHAAN GAS NEGARA PERSERO Tbk.	2015	0.411962275
83	JSMR	PT BATU BARA BUKIT ASAM	2015	1.969195472

NO	KODE	NAMA PERUSAHAAN	TAHUN	LEVERAGE
84	PGAS	PT HOLCIM INDONESIA	2015	1.14867459
85	PTBA	PT SEMEN INDONESIA	2015	0.818999462
86	SMCB	PT TELEKOMUNIKASI INDONESIA	2015	1.04992404
87	SMGR	BAKRIE SUMATERA PLANTATION Tbk.	2015	0.390379331
88	TLKM	PT UNITED TRACTORS	2015	0.77862097
89	UNSP	PT WIJAYA KARYA	2015	4.042477529
90	UNTR	AGRO ASRI LESTARI	2015	0.572353834
91	WIKA	ADHI	2015	2.604641532
92	AALI	ADIRA FINANCE	2016	0.376994162
93	ADHI	PT ANEKA TAMBANG	2016	2.692127203
94	ASII	ASTRA INTERNASIONAL	2016	0.871649536
95	BBCA	BANK BNI	2016	4.973219124
96	BBNI	BANK BRI	2016	5.52021338
97	BBRI	BANK BTN	2016	5.836228596
98	BBTN	BANK DANAMON	2016	10.19511126
99	BNGA	BANK CIMB NIAGA	2016	6.061926959
100	BNII	MAYBANK INDONESIA	2016	7.648488015
101	BNLI	BANK PERMATA	2016	7.581176412
102	INCO	PT VALE INDONESIA	2016	0.213073882
103	INTP	INDOCEMENT TUNGGAL PRAKARSA Tbk.	2016	0.000153484
104	ITMG	INDO TAMBANGRAYA MEGAH Tbk.	2016	0.333206969
105	PGAS	PERUSAHAAN GAS NEGARA PERSERO Tbk.	2016	1.155752741
106	PTBA	PT BATU BARA BUKIT ASAM	2016	0.760430347
107	SMCB	PT HOLCIM INDONESIA	2016	1.451820616
108	SMGR	PT SEMEN INDONESIA	2016	0.446533974
109	TLKM	PT TELEKOMUNIKASI INDONESIA	2016	0.701764193
110	UNTR	PT UNITED TRACTORS	2016	0.50136818
111	WIKA	PT WIJAYA KARYA	2016	1.487978863

Lampiran 8**Variabel-Uji Sensitivitas**

NO	KODE	TAHUN	EcoDI	EnvDI	LADI	HRDI	SocDI	PRDI
			9 item	34 item	16 item	12 item	11 item	9 item
1	AALI	2012	0.88889	0.61765	0.6875	0.33333	0.54545	0.55556
2	ADMF	2012	0.33333	0.5	0.5625	0.25	0.27273	0.66667
3	ANTM	2012	0.88889	0.61765	0.6875	0.5	0.54545	0.88889
4	ASII	2012	0.77778	0.70588	0.5625	0.41667	0.36364	0.55556
5	BBNI	2012	0.77778	0.5	0.75	0.33333	0.54545	0.66667
6	BBRI	2012	0.88889	0.61765	0.625	0.41667	0.54545	0.88889
7	BBTN	2012	0.77778	0.08824	0.5625	0	0.09091	0.33333
8	BNGA	2012	0.33333	0.14706	0.5	0.08333	0.18182	0.22222
9	BNII	2012	0.66667	0.35294	0.6875	0.33333	0.27273	0.77778
10	INCO	2012	0.88889	0.70588	0.6875	0.5	0.54545	1
11	INDY	2012	0.88889	0.67647	0.1875	0.91667	0.63636	0.66667
12	JSMR	2012	0.88889	0.647059	0.75	0.58333	0.54545	0.88889
13	PTBA	2012	0.88889	0.73529	0.6875	0.58333	0.63636	0.88889
14	SMCB	2012	0.77778	0.38235	0.5	0.58333	0.36364	0.33333
15	TLKM	2012	0.88889	0.76471	0.75	0.5	0.45455	0.88889
16	UNSP	2012	0.44444	0.41176	0.625	0.5	0.27273	0.22222
17	WIKA	2012	0.88889	0.73529	0.6875	0.58333	0.54545	0.88889
18	AALI	2013	0.888889	0.764706	0.75	0.166667	0.363636	0.666667
19	ADHI	2013	0.333333	0.029412	0.5	0	0.090909	0
20	ADMF	2013	0.333333	0.147059	0.4375	0.083333	0.363636	0.555556
21	ANTM	2013	0.777778	0.764706	0.5	0	0.454545	0.222222
22	ASII	2013	0.444444	0.352941	0.375	0	0.181818	0.333333
23	BBNI	2013	0.444444	0.088235	0.375	0.083333	0.272727	0.222222
24	BBRI	2013	0.333333	0.352941	0.875	0.583333	0.363636	0.777778
25	BBTN	2013	0.666667	0.058824	0.5	0.083333	0.090909	0.222222
26	BDMN	2013	0.555556	0.147059	0.3125	0.083333	0.272727	0.333333
27	BNGA	2013	0.444444	0.058824	0.4375	0.166667	0.090909	0.222222
28	BNII	2013	0.444444	0.117647	0.4375	0.166667	0.090909	0.222222
29	INCO	2013	0.666667	0.382353	0.375	0.166667	0.181818	0
30	INDY	2013	0.333333	0.323529	0.1875	0.25	0.090909	0.111111
31	INTP	2013	1	0.735294	0.625	0.5	0.636364	0.666667
32	ITMG	2013	0.555556	0.323529	0.4375	0.083333	0.090909	0.222222

Lanjutan Lampiran 8

NO	KODE	TAHUN	EcoDI	EnvDI	LADI	HRDI	SocDI	PRDI
			9 item	34 item	16 item	12 item	11 item	9 item
34	PGAS	2013	0.666667	0.264706	0.375	0.083333	0.363636	0.333333
35	PTBA	2013	0.555556	0.441176	0.5	0.583333	0.545455	0.666667
36	SMCB	2013	0.888889	0.911765	0.8125	0.75	0.636364	0.888889
37	SMGR	2013	0.666667	0.735294	0.6875	0	0.181818	0.555556
38	TLKM	2013	0.666667	0.176471	0.625	0.25	0.454545	0.333333
39	UNSP	2013	0.444444	0.235294	0.5625	0.5	0.272727	0.222222
40	UNTR	2013	0.555556	0.352941	0.4375	0	0.272727	0.333333
41	WIKA	2013	0.666667	0.058824	0.625	0	0.272727	0
42	AALI	2014	0.555556	0.647059	0.8125	0.25	0.272727	0.777778
43	ADHI	2014	0.333333	0.029412	0.3125	0	0.090909	0
44	ADMF	2014	0.555556	0.088235	0.25	0	0.090909	0.444444
45	ANTM	2014	0.333333	0.764706	0.6875	0.083333	0.272727	0.333333
46	ASII	2014	0.555556	0.441176	0.5625	0.416667	0.363636	0.222222
47	BBNI	2014	0.555556	0.294118	0.375	0.166667	0.363636	0.333333
48	BBRI	2014	0.666667	0.382353	0.5625	0.166667	0.363636	0.333333
49	BBTN	2014	0.444444	0.5	0.375	0	0.090909	0.333333
50	BDMN	2014	0.555556	0.147059	0.375	0.166667	0.363636	0.222222
51	BNGA	2014	0.444444	0.088235	0.25	0.166667	0.272727	0.333333
52	BNII	2014	0.444444	0.117647	0.5	0.083333	0.181818	0.444444
53	BNLI	2014	0.222222	0.323529	0.25	0	0.272727	0.444444
54	INCO	2014	0.888889	0.5	0.8125	0.25	0.727273	0.222222
55	INDY	2014	0.222222	0.088235	0.1875	0	0.272727	0
56	INTP	2014	0.888889	0.676471	0.5625	0.166667	0.181818	0.555556
57	ITMG	2014	0.777778	0.441176	0.8125	0.083333	0.090909	0
58	PGAS	2014	0.555556	0.411765	0.75	0.333333	0.363636	0.555556
59	PTBA	2014	1	0.823529	0.75	0.75	0.727273	0.666667
60	SMCB	2014	0.888889	0.911765	0.8125	0.75	0.545455	1
61	SMGR	2014	0.555556	0.558824	0.4375	0	0.545455	0.666667
62	TLKM	2014	0.666667	0.176471	0.6875	0.333333	0.454545	0.333333
63	UNSP	2014	0.555556	0.382353	0.25	0.083333	0.272727	0
64	UNTR	2014	0.666667	0.352941	0.5625	0.166667	0.454545	0.222222
65	WIKA	2014	0.777778	0.205882	0.875	0.166667	0.272727	0.444444
66	AALI	2015	0.555556	0.617647	0.6875	0.916667	0.545455	0.888889
67	ADHI	2015	0.333333	0.029412	0.375	0	0	0.111111
68	ADMF	2015	0.444444	0.205882	0.4375	0	0.090909	0.555556

Lanjutan Lampiran 8

NO	KODE	TAHUN	EcoDI	EnvDI	LADI	HRDI	SocDI	PRDI
			9 item	34 item	16 item	12 item	11 item	9 item
70	ASII	2015	0.444444	0.5	0.4375	0.333333	0.545455	0.333333
71	BBCA	2015	0.333333	0.088235	0.25	0	0.181818	0.222222
72	BBNI	2015	0.555556	0.264706	0.375	0.166667	0.363636	0.333333
73	BBRI	2015	0.888889	0.176471	0.5	0.083333	0.454545	0.444444
74	BBTN	2015	0.888889	0.382353	0.75	0.666667	0.909091	0.777778
75	BDMN	2015	0.555556	0.205882	0.3125	0.083333	0.272727	0.555556
76	BNGA	2015	0.444444	0.117647	0.375	0.166667	0.272727	0.333333
77	BNII	2015	0.333333	0.117647	0.25	0	0.272727	0.222222
78	BNLI	2015	0.222222	0.176471	0.375	0.083333	0.181818	0.111111
79	INCO	2015	0.555556	0.558824	0.75	0	0.636364	0.222222
80	INDY	2015	0.222222	0.058824	0.125	0	0.363636	0
81	INTP	2015	0.777778	0.588235	0.375	0	0.181818	0.555556
82	ITMG	2015	0.444444	0.441176	0.3125	0.083333	0.272727	0.111111
83	JSMR	2015	0.555556	0.117647	0.5	0.166667	0.181818	0.111111
84	PGAS	2015	0.555556	0.382353	0.75	0.166667	0.363636	0.555556
85	PTBA	2015	1	1	1	0.916667	0.909091	1
86	SMCB	2015	0.777778	0.852941	0.625	0	0.272727	0
87	SMGR	2015	0.777778	0.323529	0.25	0	0.272727	0.777778
88	TLKM	2015	0.666667	0.088235	0.625	0.083333	0.363636	0.333333
89	UNSP	2015	0.444444	0.411765	0.25	0	0.090909	0
90	UNTR	2015	0.666667	0.323529	0.5	0.083333	0.454545	0.333333
91	WIKA	2015	0.666667	0.235294	0.375	0	0.272727	0.111111
92	AALI	2016	0.555556	0.617647	0.8125	0.833333	0.545455	0.888889
93	ADHI	2016	0.333333	0	0.1875	0	0	0.111111
94	ASII	2016	0.444444	0.529412	0.5625	0	0.454545	0.222222
95	BBCA	2016	0.555556	0.029412	0	0	0.090909	0.111111
96	BBNI	2016	0.222222	0.235294	0.3125	0	0.090909	0.111111
97	BBRI	2016	0.333333	0	0.25	0	0.272727	0.111111
98	BBTN	2016	0.777778	0.235294	0.8125	0.5	0.454545	0.666667
99	BNGA	2016	0.333333	0	0.3125	0.083333	0.272727	0.333333
100	BNII	2016	0.444444	0.205882	0.3125	0	0.272727	0.222222
101	BNLI	2016	0.222222	0.205882	0.4375	0.083333	0.181818	0.222222
102	INCO	2016	0.111111	0.147059	0.0625	0	0.181818	0
103	INTP	2016	0.222222	0.176471	0.125	0	0.090909	0.111111
104	ITMG	2016	0.444444	0.382353	0.3125	0	0.272727	0.111111

Lanjutan Lampiran 8

NO	KODE	TAHUN	EcoDI	EnvDI	LADI	HRDI	SocDI	PRDI
			9 item	34 item	16 item	12 item	11 item	9 item
106	PTBA	2016	0.777778	0.529412	0.5625	0.833333	1	1
107	SMCB	2016	0.222222	0.588235	0.5625	0	0.272727	0
108	SMGR	2016	0.333333	0.323529	0.1875	0	0.090909	0
109	TLKM	2016	0.666667	0.147059	0.5	0.083333	0.272727	0.333333
110	UNTR	2016	0.666667	0.294118	0.5	0.083333	0.454545	0.444444
111	WIKA	2016	0.444444	0	0.125	0	0.181818	0.111111

Lampiran 9

Output Hasil Olah Data

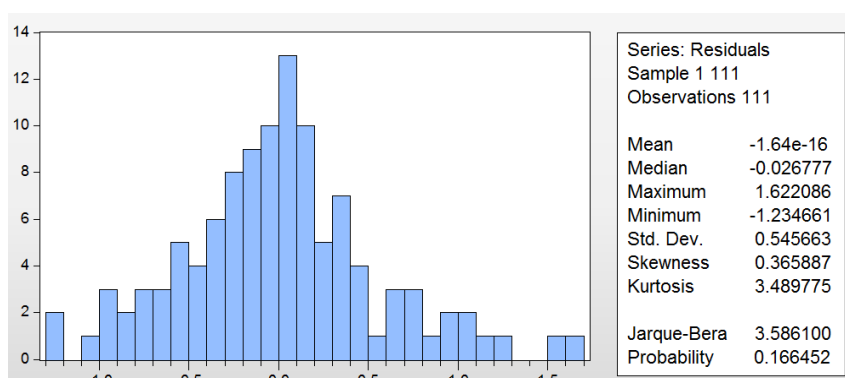
1. Statistik Deskriptif

Descriptive Statistics

	N	Minimum	Maximum	Mean	Std. Deviation
KP	111	.67391	3.47025	1.4999166	.64466405
SRDI	111	.16779	.83221	.4898119	.13713445
PROF	111	-.14244	.22857	.0573056	.06574972
KI	111	.20000	.71429	.4153429	.09760806
SIZE	111	3.E+12	1.E+15	1.34E+14	1.939E+14
LEV	111	.00015	11.39583	3.0764825	3.23442997
Valid N (listwise)	111				

2. Uji Hipotesis 1

- Uji Normalitas



- Uji Multikolinearitas

Variance Inflation Factors
Date: 11/14/17 Time: 21:45
Sample: 1 111
Included observations: 111

Variable	Coefficient Variance	Uncentered VIF	Centered VIF
C	0.606944	1027.320	NA
SRDI	0.160073	50.17268	1.458990
SIZE	0.000480	861.9991	1.782183
LEV	0.000197	15.76129	1.381977

- Uji Autokorelasi dan Uji Hipotesis

Dependent Variable: TOBINSQ
 Method: Least Squares
 Date: 11/14/17 Time: 21:39
 Sample: 1 111
 Included observations: 111
 HAC standard errors & covariance (Bartlett kernel, Newey-West fixed bandwidth = 5.0000)

Variable	Coefficient	Std. Error	t-Statistic	Prob.
C	-0.641106	0.779066	-0.822916	0.4124
SRDI	1.043155	0.400091	2.607296	0.0104
SIZE	0.061146	0.021907	2.791104	0.0062
LEV	-0.096826	0.014043	-6.895009	0.0000
R-squared	0.283555	Mean dependent var		1.499917
Adjusted R-squared	0.263468	S.D. dependent var		0.644664
S.E. of regression	0.553260	Akaike info criterion		1.689393
Sum squared resid	32.75233	Schwarz criterion		1.787034
Log likelihood	-89.76131	Hannan-Quinn criter.		1.729003
F-statistic	14.11620	Durbin-Watson stat		1.901142
Prob(F-statistic)	0.000000	Wald F-statistic		20.64606
Prob(Wald F-statistic)	0.000000			

- Uji Heteroskedastisitas

Heteroskedasticity Test: White

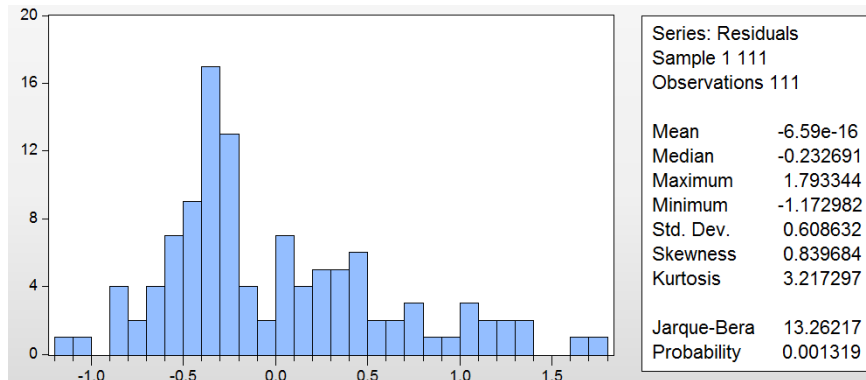
F-statistic	4.964071	Prob. F(9,101)	0.0000
Obs*R-squared	34.04188	Prob. Chi-Square(9)	0.0001
Scaled explained SS	39.37905	Prob. Chi-Square(9)	0.0000

Test Equation:
 Dependent Variable: RESID^2
 Method: Least Squares
 Date: 11/29/17 Time: 11:28
 Sample: 1 111
 Included observations: 111

Variable	Coefficient	Std. Error	t-Statistic	Prob.
C	7.432640	9.745905	0.762642	0.4475
SRDI^2	0.293142	2.009189	0.145901	0.8843
SRDI*SIZE	0.443534	0.294152	1.507839	0.1347
SRDI*LEV	-0.335883	0.148912	-2.255581	0.0263
SRDI	-12.92420	9.363203	-1.380318	0.1705
SIZE^2	-0.000308	0.007377	-0.041753	0.9668
SIZE*LEV	0.015906	0.017595	0.903984	0.3682
SIZE	-0.226422	0.523582	-0.432447	0.6663
LEV^2	0.010996	0.004981	2.207669	0.0295
LEV	-0.520174	0.551227	-0.943665	0.3476
R-squared	0.306684	Mean dependent var		0.295066
Adjusted R-squared	0.244903	S.D. dependent var		0.467697
S.E. of regression	0.406411	Akaike info criterion		1.122869
Sum squared resid	16.68219	Schwarz criterion		1.366970
Log likelihood	-52.31920	Hannan-Quinn criter.		1.221893
F-statistic	4.964071	Durbin-Watson stat		2.204241
Prob(F-statistic)	0.000016			

3. Uji Hipotesis 2

Uji Normalitas



Uji heteroskedastisitas

Heteroskedasticity Test: White

F-statistic	5.342406	Prob. F(2,108)	0.0061
Obs*R-squared	9.992973	Prob. Chi-Square(2)	0.0068
Scaled explained SS	10.68306	Prob. Chi-Square(2)	0.0048

Test Equation:
 Dependent Variable: RESID^2
 Method: Least Squares
 Date: 11/29/17 Time: 11:30
 Sample: 1 111
 Included observations: 111

Variable	Coefficient	Std. Error	t-Statistic	Prob.
C	-0.335536	0.580696	-0.577817	0.5646
SRDI^2	-0.492951	2.349085	-0.209848	0.8342
SRDI	1.694702	2.390880	0.708819	0.4800

R-squared	0.090027	Mean dependent var	0.367096
Adjusted R-squared	0.073175	S.D. dependent var	0.549106
S.E. of regression	0.528634	Akaike info criterion	1.589615
Sum squared resid	30.18104	Schwarz criterion	1.662845
Log likelihood	-85.22363	Hannan-Quinn criter.	1.619322
F-statistic	5.342406	Durbin-Watson stat	1.975647
Prob(F-statistic)	0.006131		

Semua Sampel

Dependent Variable: TOBINSQ
 Method: Least Squares
 Date: 11/15/17 Time: 19:08
 Sample: 1 111
 Included observations: 111
 HAC standard errors & covariance (Bartlett kernel, Newey-West fixed bandwidth = 5.0000)

Variable	Coefficient	Std. Error	t-Statistic	Prob.
C	0.740896	0.187253	3.956664	0.0001
SRDI	1.549617	0.392274	3.950348	0.0001
R-squared	0.108661	Mean dependent var		1.499917
Adjusted R-squared	0.100484	S.D. dependent var		0.644664
S.E. of regression	0.611418	Akaike info criterion		1.871781
Sum squared resid	40.74763	Schwarz criterion		1.920601
Log likelihood	-101.8838	Hannan-Quinn criter.		1.891586
F-statistic	13.28796	Durbin-Watson stat		1.603114
Prob(F-statistic)	0.000411	Wald F-statistic		15.60525
Prob(Wald F-statistic)	0.000139			

Sampel-Profitabilitas Tinggi

Dependent Variable: TOBINSQ
 Method: Least Squares
 Date: 11/15/17 Time: 21:53
 Sample: 1 43
 Included observations: 43
 HAC standard errors & covariance (Bartlett kernel, Newey-West fixed bandwidth = 4.0000)

Variable	Coefficient	Std. Error	t-Statistic	Prob.
C	1.635358	0.357815	4.570395	0.0000
SRDI	0.748893	0.686929	1.090204	0.2820
R-squared	0.018882	Mean dependent var		2.040253
Adjusted R-squared	-0.005047	S.D. dependent var		0.661872
S.E. of regression	0.663541	Akaike info criterion		2.062942
Sum squared resid	18.05173	Schwarz criterion		2.144858
Log likelihood	-42.35324	Hannan-Quinn criter.		2.093150
F-statistic	0.789072	Durbin-Watson stat		2.224662
Prob(F-statistic)	0.379563	Wald F-statistic		1.188544
Prob(Wald F-statistic)	0.281990			

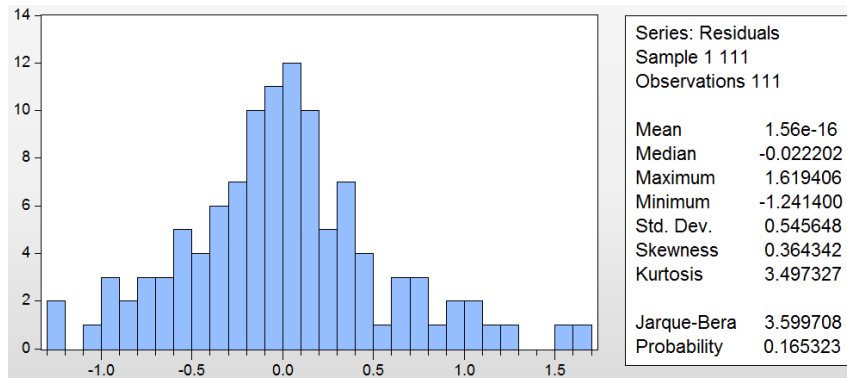
Sampel-Profitabilitas Rendah

Dependent Variable: TOBINSQ
 Method: Least Squares
 Date: 11/15/17 Time: 19:21
 Sample: 1 68
 Included observations: 68
 HAC standard errors & covariance (Bartlett kernel, Newey-West fixed bandwidth = 4.0000)

Variable	Coefficient	Std. Error	t-Statistic	Prob.
C	0.864644	0.139516	6.197453	0.0000
SRDI	0.641503	0.331120	1.937374	0.0570
R-squared	0.076465	Mean dependent var		1.158233
Adjusted R-squared	0.062472	S.D. dependent var		0.319110
S.E. of regression	0.308982	Akaike info criterion		0.517900
Sum squared resid	6.300992	Schwarz criterion		0.583180
Log likelihood	-15.60860	Hannan-Quinn criter.		0.543766
F-statistic	5.464541	Durbin-Watson stat		1.695166
Prob(F-statistic)	0.022448	Wald F-statistic		3.753417
Prob(Wald F-statistic)	0.056981			

4. Uji Hipotesis 3

- Uji Normalitas



- Uji Multikolinearitas

Variance Inflation Factors
Date: 11/14/17 Time: 22:08
Sample: 1 111
Included observations: 111

Variable	Coefficient Variance	Uncentered VIF	Centered VIF
C	1.795556	638.9880	NA
SRDI	2.854417	262.6391	18.93102
KI	4.212055	272.7363	14.15236
SRDI_KI	15.79325	254.9262	26.79939
SIZE	0.001129	400.8911	1.387818
LEV	0.000528	3.726365	1.947975

- Uji Autokorelasi dan Uji Hipotesis

Dependent Variable: TOBINSQ
 Method: Least Squares
 Date: 12/05/17 Time: 20:53
 Sample: 1 111
 Included observations: 111
 HAC standard errors & covariance (Bartlett kernel, Newey-West fixed bandwidth = 5.0000)

Variable	Coefficient	Std. Error	t-Statistic	Prob.
C	-0.698226	1.094526	-0.637926	0.5249
SRDI	1.162526	1.377719	0.843805	0.4007
KI	0.121997	1.339455	0.091079	0.9276
SRDI_KI	-0.287019	2.759388	-0.104015	0.9174
SIZE	0.061297	0.023839	2.571321	0.0115
LEV	-0.096483	0.013755	-7.014228	0.0000

R-squared	0.283595	Mean dependent var	1.499917
Adjusted R-squared	0.249480	S.D. dependent var	0.644664
S.E. of regression	0.558489	Akaike info criterion	1.725374
Sum squared resid	32.75053	Schwarz criterion	1.871835
Log likelihood	-89.75827	Hannan-Quinn criter.	1.784789
F-statistic	8.313016	Durbin-Watson stat	1.899152
Prob(F-statistic)	0.000001	Wald F-statistic	14.86482
Prob(Wald F-statistic)	0.000000		

- Uji Heteroskedastisitas

Heteroskedasticity Test: White

F-statistic	2.536963	Prob. F(19,91)	0.0017
Obs*R-squared	38.43654	Prob. Chi-Square(19)	0.0052
Scaled explained SS	42.94597	Prob. Chi-Square(19)	0.0013

Test Equation:
 Dependent Variable: RESID^2
 Method: Least Squares
 Date: 11/29/17 Time: 11:32
 Sample: 1 111
 Included observations: 111
 Collinear test regressors dropped from specification

Variable	Coefficient	Std. Error	t-Statistic	Prob.
C	36.63498	28.76163	1.273745	0.2060
SRDI^2	38.24149	68.18757	0.560828	0.5763
SRDI*KI	267.9145	323.5489	0.828049	0.4098
SRDI*SRDI_KI	-185.0828	316.7065	-0.584399	0.5604
SRDI*SIZE	1.214196	1.343420	0.903810	0.3685
SRDI*LEV	-1.660832	0.994936	-1.669285	0.0985
SRDI	-81.75389	77.20822	-1.058875	0.2925
KI^2	70.48890	89.47490	0.787807	0.4329
KI*SRDI_KI	-257.5826	357.3237	-0.720866	0.4728
KI*SIZE	0.949082	1.932619	0.491086	0.6245
KI*LEV	-1.389263	0.991462	-1.401226	0.1645
KI	-89.14562	85.98859	-1.036715	0.3026
SRDI_KI^2	198.8381	346.0440	0.574604	0.5670
SRDI_KI*SIZE	-1.295906	3.371419	-0.384380	0.7016
SRDI_KI*LEV	2.795004	2.102548	1.329341	0.1871
SIZE^2	0.001465	0.008130	0.180154	0.8574
SIZE*LEV	0.023274	0.023494	0.990610	0.3245
SIZE	-0.857325	0.967866	-0.885789	0.3781

5. Uji Sensitivitas

Statistik Deskriptif

Descriptive Statistics					
	N	Minimum	Maximum	Mean	Std. Deviation
ECODI	111	.11111	1.00000	.5775776	.21753636
ENVDI	111	.00000	1.00000	.3667197	.25297288
LADI	111	.00000	1.00000	.5005631	.21043372
HRDI	111	.00000	.91667	.2192192	.26037268
SOCDI	111	.00000	1.00000	.3382473	.20700402
PRDI	111	.00000	1.00000	.3893894	.28969347
Valid N (listwise)	111				

Uji Sensitivitas

Dependent Variable: TOBINSQ
 Method: Least Squares
 Date: 11/15/17 Time: 19:40
 Sample: 1 111
 Included observations: 111
 HAC standard errors & covariance (Bartlett kernel, Newey-West fixed bandwidth = 5.0000)

Variable	Coefficient	Std. Error	t-Statistic	Prob.
C	-0.982533	1.148159	-0.855746	0.3941
ECODI	0.706409	0.421871	1.674468	0.0971
ENDI	-0.377440	0.327534	-1.152370	0.2519
LADI	-0.240059	0.156122	-1.537640	0.1272
HRDI	-0.499472	0.366605	-1.362423	0.1761
SOCDI	-0.314664	0.587698	-0.535418	0.5935
PRDI	0.602558	0.273260	2.205068	0.0297
SIZE	0.080008	0.035438	2.257672	0.0261
LEV	-0.115186	0.020715	-5.560601	0.0000
R-squared	0.271296	Mean dependent var		1.349556
Adjusted R-squared	0.214142	S.D. dependent var		0.671175
S.E. of regression	0.594987	Akaike info criterion		1.877051
Sum squared resid	36.10899	Schwarz criterion		2.096743
Log likelihood	-95.17633	Hannan-Quinn criter.		1.966173
F-statistic	4.746806	Durbin-Watson stat		1.399333
Prob(F-statistic)	0.000057	Wald F-statistic		5.211564
Prob(Wald F-statistic)	0.000018			

