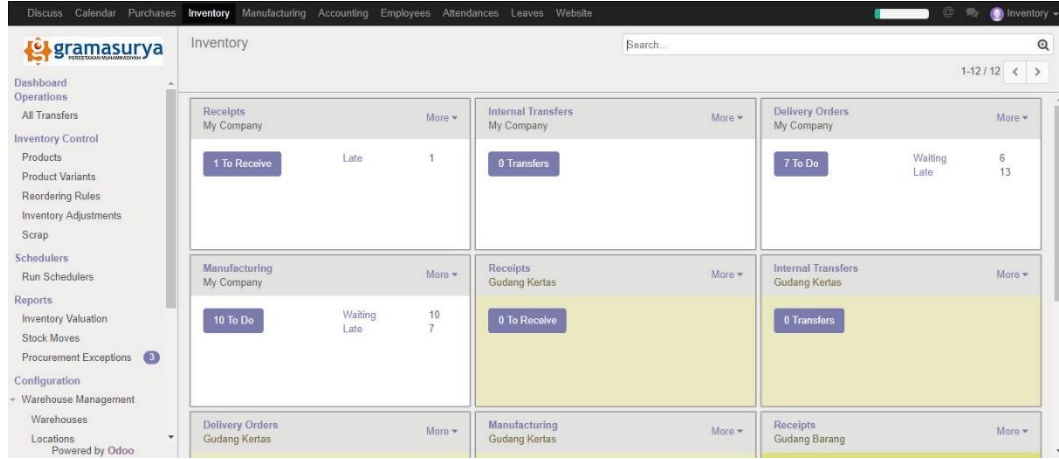


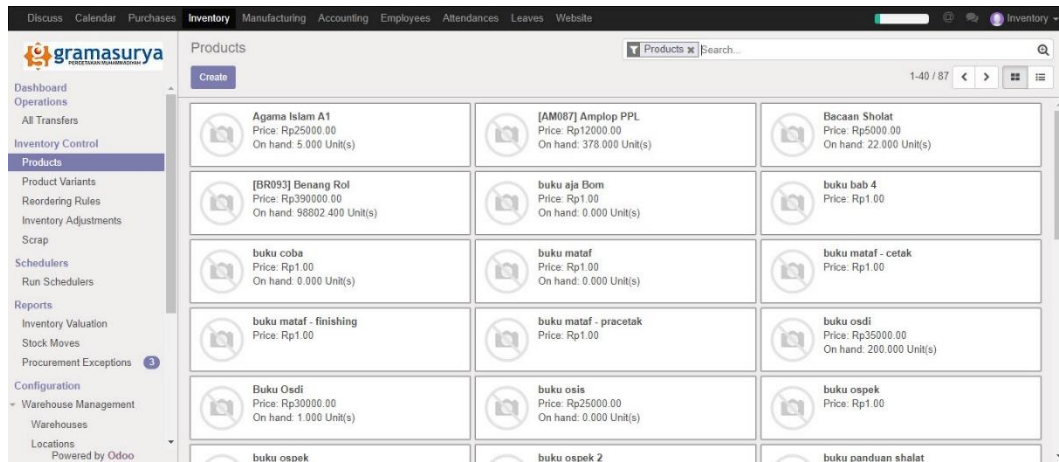
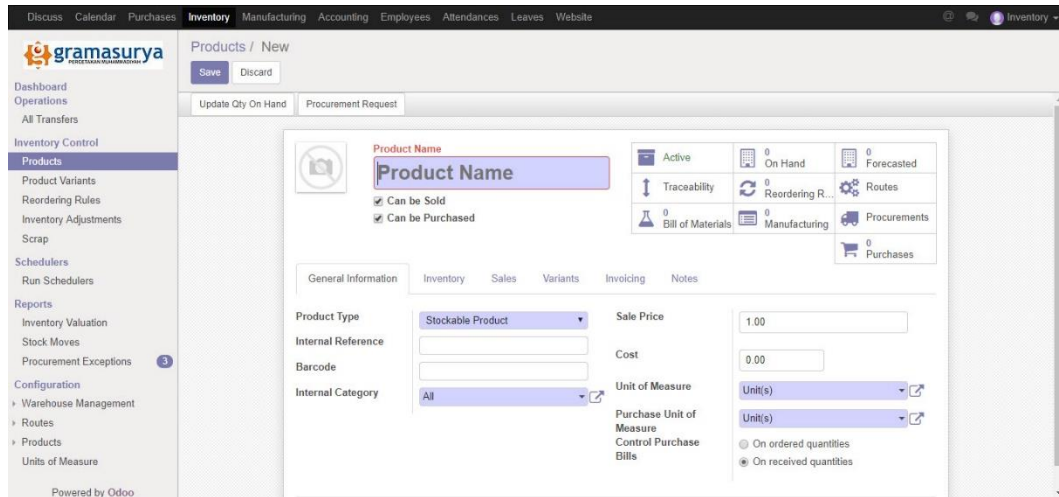
# LAMPIRAN

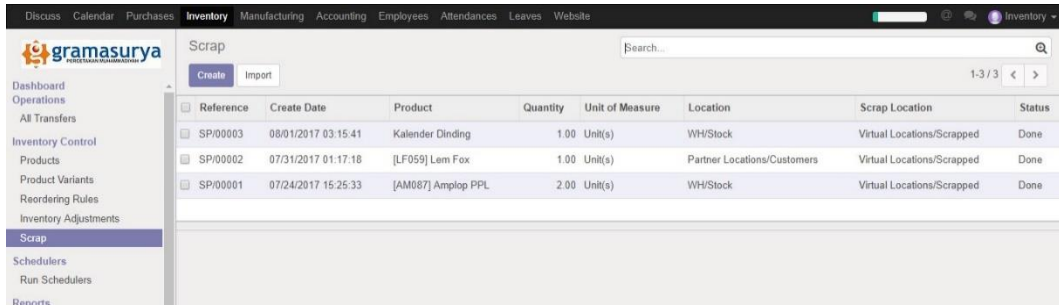
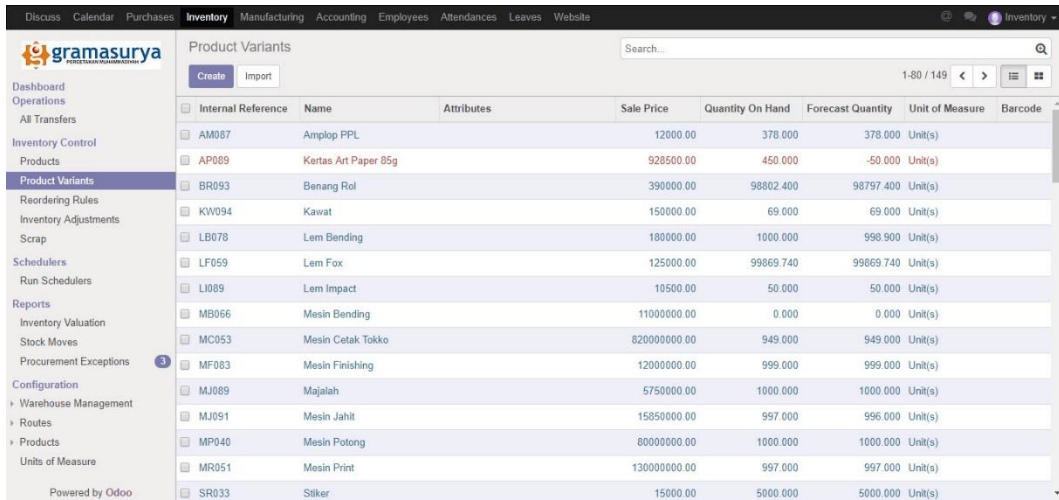
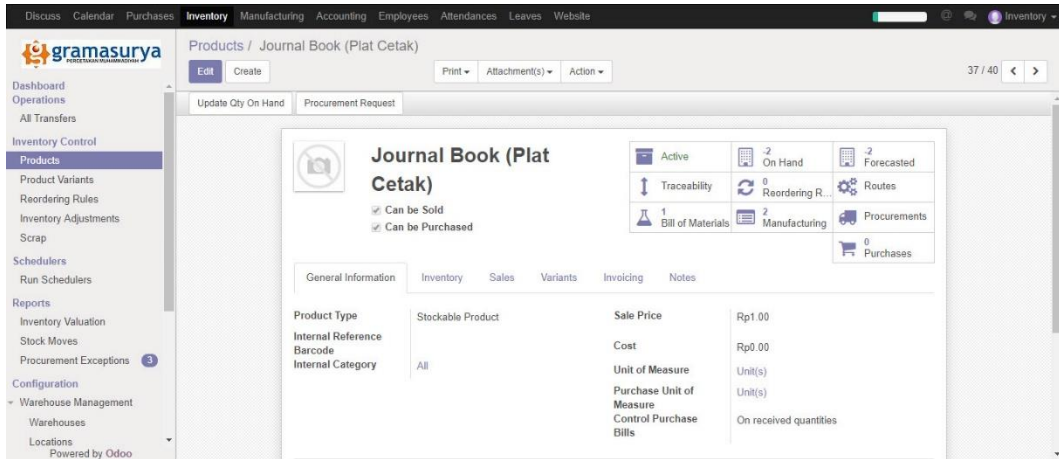
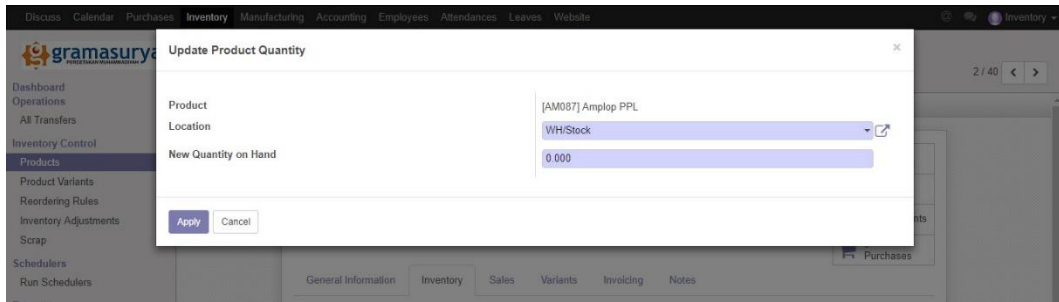
## 1. Screenshoot Interface Aplikasi

### a. Inventory



### b. Inventory Control





### c. Reports

Product	Quantity	Unit of Measure	Location	Incoming Date	Inventory Value
[AM087] Amplop PPL (1)	378.00				75600.00
[AP080] Kertas Art Paper (3)	795.80				565415900.00
[AP089] Kertas Art Paper 85g (1)	450.00				139275000.00
[BR093] Benang Rol (5)	98802.40				1284431200.00
[HV044] Kertas HVS 100g (3)	98899.60				5694277200.00
[HV070] Kertas HVS 70g (5)	90113.80				6758535000.00
[IV030] Kertas Ivory (4)	760.00				228000.00
[KW094] Kawat (1)	69.00				3450000.00
[LB078] Lem Bending (2)	1000.00				12000000.00
[LF059] Lem Fox (4)	98869.74				4094659340.00
[LI089] Lem Impact (1)	50.00				105000.00
[MC053] Mesin Cetak Tokko (1)	949.00				0.00
[MF083] Mesin Finishing (1)	999.00				0.00
[MJ089] Majalah (2)	1000.00				11500000.00
[MJ091] Mesin Jahit (1)	997.00				0.00

### d. Configuration

Warehouse Name	Location Stock	Address
My Company	WH/Stock	PT Gramasurya
Gudang Kertas	GK/Stock	
Gudang Barang	GB/Stock	

**Warehouse Name** [Active] [Routes]

**Short Name** [ ] **Address** [ ]

**Warehouse Configuration**

**Incoming Shipments**

- Receive goods directly in stock (1 step)
- Unload in input location then go to stock (2 steps)
- Unload in input location, go through a quality control before being admitted in stock (3 steps)

**Outgoing Shipments**

- Ship directly from stock (Ship only)
- Bring goods to output location before shipping (Pick + Ship)
- Make packages into a dedicated location, then bring them to the output location for shipping (Pick + Pack + Ship)

**Manufacture in this Warehouse**

**Purchase to resupply this warehouse**

**Default Resupply Warehouse** [ ]

**Resupply Warehouses**

- My Company
- Gudang Kertas
- Gudang Barang

Discuss Calendar Purchases **Inventory** Manufacturing Accounting Employees Attendances Leaves Website

**gramasurya** Warehouses / Gudang Kertas

2 / 3

**Gudang Kertas** Active Routes

Short Name: GK Address:

Warehouse Configuration

Incoming Shipments: Receive goods directly in stock (1 step)  
 Outgoing Shippings: Ship directly from stock (Ship only)

Manufacture in this Warehouse:   
 Purchase to resupply this warehouse:   
 Default Resupply Warehouse:  My Company  Gudang Barang

Discuss Calendar Purchases **Inventory** Manufacturing Accounting Employees Attendances Leaves Website

**gramasurya** Locations / New

Save Discard

Location Name:

Parent Location:

Additional Information

Location Type: Internal Location  
 Owner:   
 Is a Scrap Location?   
 Is a Return Location?

Localization

Corridor (X):   
 Shelves (Y):   
 Height (Z):   
 Barcode:

Logistics

Removal Strategy:   
 Put Away Strategy:

Discuss Calendar Purchases **Inventory** Manufacturing Accounting Employees Attendances Leaves Website

**gramasurya** Locations

Internal x Search...

1-6 / 6

Display Name	Location Type
GB/Stock	Internal Location
GK/Stock	Internal Location
WH/Stock	Internal Location
WH/Stock/Finish Product	Internal Location
WH/Stock/Raw Material	Internal Location
Gudang Kertas	Internal Location

Discuss Calendar Purchases **Inventory** Manufacturing Accounting Employees Attendances Leaves Website

**gramasurya** Routes

Search...

1-11 / 11

Route Name
+ Vendor to Gudang Kertas
+ Vendor to Gudang Material
+ Manufacture
+ Buy
+ Gudang Kertas: Ship Only
+ Gudang Barang: Receipt in 1 step
+ Gudang Barang: Ship Only
+ Gudang Kertas: Receipt in 1 step
+ My Company: Receipt in 1 step
+ My Company: Ship Only
+ Make To Order

Discuss Calendar Purchases **Inventory** Manufacturing Accounting Employees Attendances Leaves Website

gramasurya

Routes / New

Save Discard

Route Name  Active

**Applicable On**  
Select the places where this route can be selected

Product Categories  Warehouses   
 Products  Sale Order Lines

**Push Rules**

Source Location	Destination Location	Operation Name
Add an item		

Powered by Odoo

Discuss Calendar Purchases **Inventory** Manufacturing Accounting Employees Attendances Leaves Website

gramasurya

Routes / Vendor to Gudang Kertas

Edit Create Attachment(s) Action 1 / 11

**Vendor to Gudang Kertas** Active

**Applicable On**  
Select the places where this route can be selected

Product Categories  Warehouses   
 Products  Sale Order Lines

**Push Rules**

Source Location	Destination Location	Operation Name
WH/Stock	GK/Stock	Mutasi Internal

Powered by Odoo

Discuss Calendar Purchases **Inventory** Manufacturing Accounting Employees Attendances Leaves Website

gramasurya

Product Categories

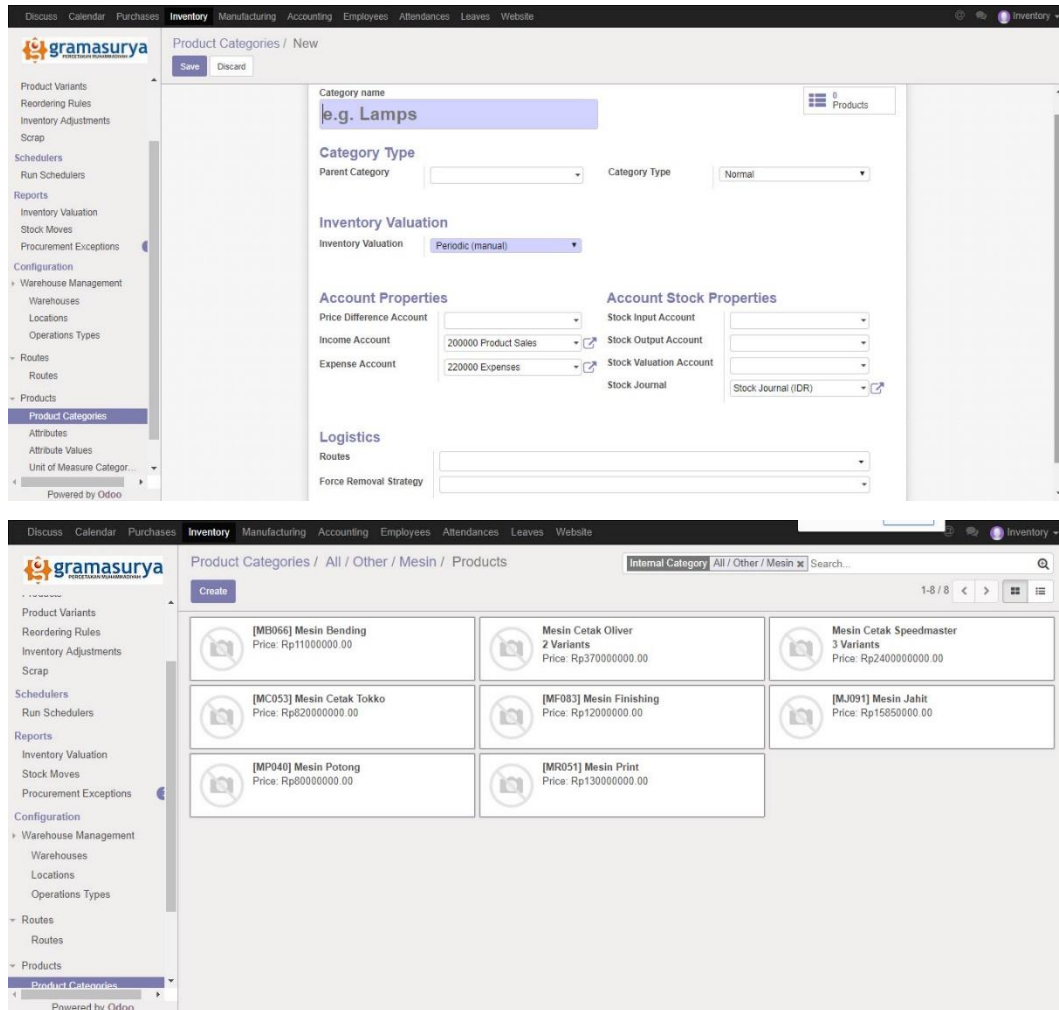
Create Import Search... 1-7/7

**Display Name**

- All
- All / Other
- All / Other / Material
- All / Other / Mesin
- All / Penjualan
- All / Penjualan / Majalah
- All / Saleable

139.162.42.93:8069/web#menu\_id=211&action=





## 2. Langkah-langkah dalam Fungsional Aplikasi

### a. Mencari Jumlah Stok Barang Gudang

- 1) Cek *stock* untuk melihat jumlah barang di Gudang yang telah ter-*update*. Dengan cara membuka sub menu “*Inventory Valuation*” (menu berada pada bagian *Reports* yang dilingkari warna merah).
- 2) Pada bagian atas, klik “*Group By*”. Pilih *Location* untuk Lalu cek lokasi departemen atau unit masing – masing (yang berada pada lingkaran warna hijau).
- 3) Jumlah stok barang dapat dilihat pada lingkaran warna biru.

Inventory Valuation

Product	Quantity	Unit of Measure	Location	Incoming Date	Inventory Value
GB/Stock (1)	200.00				10000000.00
GK/Stock (1)	200.00				61900000.00
WH/Stock (106)	1014072.66				742349213.38
WH/Stock/Finish Product (8)	885.72				10134540.00
WH/Stock/Raw Material (23)	500182.75				20459791000.00
					21284174753.38

Inventory Valuation

Product	Quantity	Unit of Measure	Location
GB/Stock (1)	200.00		
GK/Stock (1)	200.00		
WH/Stock (106)	1014072.66		
WH/Stock/Finish Product (8)	885.72		
WH/Stock/Raw Material (23)	500182.75		

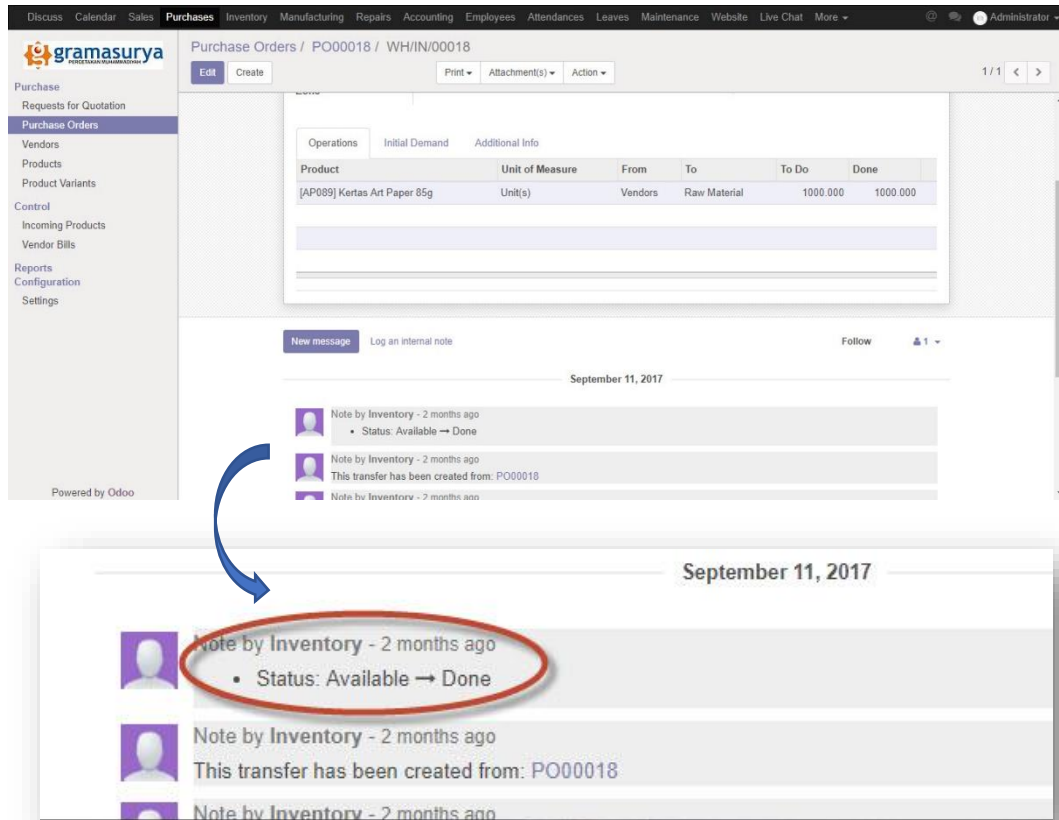
- b. Mengetahui penerima barang yang keluar maupun masuk
- 1) Dari barang masuk dapat dilihat melalui *purchasing*, sedangkan barang keluar melalui *Sales order*. Dari tiap fungsi tersebut memiliki usernya yang menjalankan, dengan begitu dapat diketahui siapa yang mengoperatori.

Sales Orders

Order Number	Order Date	Customer	Salesperson	Total	Invoice Status
SO036	09/13/2017 14:56:01	Andri Bayu Suryatno	Administrator	Rp 3593750.00	Fully Invoiced
SO034	08/02/2017 11:35:36	TI UMY, Okto	Sales	Rp 36000.00	Fully Invoiced
SO033	07/31/2017 01:04:44	BAA UAD	Sales	Rp 125000.00	Fully Invoiced
SO027	07/23/2017 00:49:09	Topan Firdaus	Administrator	Rp 50000.00	To Invoice
SO026	07/22/2017 22:00:55	Gunawan	Sales	Rp 1.15	To Invoice
SO025	07/22/2017 21:17:26	Gunawan	Sales	Rp 25000.00	Fully Invoiced
SO024	07/22/2017 21:11:27	BAA UAD, Drs. Dedy Pramono, M.Hum	Sales	Rp 25000.00	Fully Invoiced

Order Number	Order Date	Customer	Salesperson
SO036	09/13/2017 14:56:01	Andri Bayu Suryatno	Administrator
SO034	08/02/2017 11:35:36	TI UMY, Okto	Sales
SO033	07/31/2017 01:04:44	BAA UAD	Sales
SO027	07/23/2017 00:49:09	Topan Firdaus	Administrator
SO026	07/22/2017 22:00:55	Gunawan	Sales
SO025	07/22/2017 21:17:26	Gunawan	Sales

- 2) Atau dapat pula dengan melihatnya di note setiap produk yang pernah di pesan pada modul purchase pada bagian purchase order (lingkaran merah adalah penerima barang atau yang mengoperatori barang saat itu / *inventory*).



### 3. Melacak Lokasi Barang

- a. Melacak posisi barang di gudang

Untuk melacak atau mencari lokasi barang gudang, dapat dilakukan dengan membuka modul *Inventory* lalu klik *Location* pada bagian menu *Configuration* sub menu *Warehouse Management*. Klik WH/Stock dan klik pada bagian tombol *current stock*. Produk akan ditampilkan, lalu *expand* pada produk yang ingin kita cari lokasinya.



Discuss Calendar Sales Purchases **Inventory** Manufacturing Repairs Accounting Employees Attendances Leaves Maintenance Website Live Chat More

gramasurya

Locations / WH/Stock / Current Stock

Internal Locations x Product x Search...

Filters Group By Favorites

Product	Quantity	Unit of Measure	Location	Incoming Date	Inventory Value
[AM087] Amplop PPL (1)	378.00				75600.00
[AP080] Kertas Art Paper (3)	795.80				565415900.00
[AP089] Kertas Art Paper 85g (3)	1750.00				541625000.00
[AP089] Kertas Art Paper 85g	450.00	Unit(s)	WH/Stock	07/18/2017 15:57:16	139275000.00
[AP089] Kertas Art Paper 85g	300.00	Unit(s)	WH/Stock/Raw Material	09/10/2017 22:34:45	92850000.00
[AP089] Kertas Art Paper 85g	1000.00	Unit(s)	WH/Stock/Raw Material	09/11/2017 11:12:50	309500000.00
[BR093] Benang Rol (6)	99002.40				1287031200.00
[BR093] Benang Rol	-0.60	Unit(s)	WH/Stock/Finish Product	07/24/2017 00:50:23	-7800.00
[BR093] Benang Rol	-12.00	Unit(s)	WH/Stock/Finish Product	07/24/2017 00:56:23	-156000.00
[BR093] Benang Rol	0.25	Unit(s)	WH/Stock/Raw Material	07/20/2017 21:43:01	3250.00
[BR093] Benang Rol	4.75	Unit(s)	WH/Stock/Raw Material	07/20/2017 21:43:01	61750.00
[BR093] Benang Rol	98810.00	Unit(s)	WH/Stock/Raw Material	07/20/2017 21:43:01	1284530000.00
[BR093] Benang Rol	200.00	Unit(s)	WH/Stock/Raw Material	09/10/2017 22:28:24	2600000.00
[HV044] Kertas HVS 100g (3)	99899.60				5694277200.00
[HV070] Kertas HVS 70g (5)	90113.80				6758535000.00

Product	Quantity	Unit of Measure	Location
[AM087] Amplop PPL (1)	378.00		
[AP080] Kertas Art Paper (3)	795.80		
[AP089] Kertas Art Paper 85g (3)	1750.00		
[AP089] Kertas Art Paper 85g	450.00	Unit(s)	WH/Stock
[AP089] Kertas Art Paper 85g	300.00	Unit(s)	WH/Stock/Raw Material
[AP089] Kertas Art Paper 85g	1000.00	Unit(s)	WH/Stock/Raw Material
[BR093] Benang Rol (6)	99002.40		
[BR093] Benang Rol	-0.60	Unit(s)	WH/Stock/Finish Product
[BR093] Benang Rol	-12.00	Unit(s)	WH/Stock/Finish Product
[BR093] Benang Rol	0.25	Unit(s)	WH/Stock/Raw Material
[BR093] Benang Rol	4.75	Unit(s)	WH/Stock/Raw Material
[BR093] Benang Rol	98810.00	Unit(s)	WH/Stock/Raw Material
[BR093] Benang Rol	200.00	Unit(s)	WH/Stock/Raw Material

#### 4. Melacak barang berdasarkan Tanggal

- Melacak barang yang masih tersedia berdasarkan tanggal dapat dilakukan dengan cara mengklik bagian menu *Reports* sub menu *Stock Moves*. Setelah tampilan barang keluar, klik pada bagian "filters" untuk mengetahui barang yang *ready* lalu klik lagi pada tombol "group by" dan pilih *Date*. Maka akan terlihat barang apa saja yang *ready* berdasarkan tanggal yang diinginkan.

Discuss Calendar Sales Purchases **Inventory** Manufacturing Repairs Accounting Employees Attendances Leaves Maintenance Website More - Administrator

gramasurya Stock Moves Search

Filters Group By Favorites 1-80 / 472

Description	Reference	Source Document	Product	Quantity	Unit of Measure	Source Location	Destination Location	Expected Date	Status
INV.INV. Pelat Termal			[PT045] Plat Thermal	500.000	Unit(s)	Virtual Locations/Inventory adjustment	WH/Stock	07/18/2017 15:13:52	Done
INV.INV. Tinta HDX			[TX065] Tinta HDX (HDX-)	50.000	Unit(s)	Virtual Locations/Inventory adjustment	WH/Stock	07/18/2017 15:17:36	Done
INV.INV. Staples			[ST024] Staples	30.000	Unit(s)	Virtual Locations/Inventory adjustment	WH/Stock	07/18/2017 15:18:08	Done
INV.INV. Lem Banding			[LB078] Lem Banding	375.000	Unit(s)	Virtual Locations/Inventory adjustment	WH/Stock	07/18/2017 15:19:03	Done
INV.INV. Lem Inpak			[LI089] Lem Impact	50.000	Unit(s)	Virtual Locations/Inventory adjustment	WH/Stock	07/18/2017 15:19:50	Done
INV.INV. Lem Fox			[LF059] Lem Fox	72.000	Unit(s)	Virtual Locations/Inventory adjustment	WH/Stock	07/18/2017 15:20:35	Done
INV.INV. Benang Rol			[BR093] Benang Rol	30.000	Unit(s)	Virtual Locations/Inventory adjustment	WH/Stock	07/18/2017 15:44:56	Done
INV.INV. Lem Emblem			[TE075] Tinta Emblem Cyan	50.000	Unit(s)	Virtual Locations/Inventory adjustment	WH/Stock	07/18/2017 15:47:45	Done
INV.INV. Majalah			[MJ089] Majalah	500.000	Unit(s)	Virtual Locations/Inventory adjustment	WH/Stock	07/18/2017 15:48:17	Done
INV.INV. Pelat			Pelat	500.000	Unit(s)	Virtual Locations/Inventory adjustment	WH/Stock	07/18/2017 15:51:57	Done

Run Schedulers  
Reports  
Inventory Valuation  
**Stock Moves**  
Procurement Exceptions 3  
Configuration  
Settings  
Warehouse Management  
Warehouses  
Locations  
Operations Types  
Routes  
Routes  
Products  
Product Categories  
Attributes  
Attribute Values  
Unit of Measure Cate...  
Units of Measure  
Powered by Odoo



## 5. Melacak Status Order yang Belum Datang

Untuk mencari status barang order yang belum datang dapat dilihat dengan dua cara, yaitu:

### a. Dashboard Inventory

Dengan membuka bagian *dashboard inventory*, maka akan terlihat tampilan kolom-kolom. Lalu pilih bagian *delivery order*, akan terlihat barang apa saja yang masih belum sampai di gudang perusahaan.

Discuss Calendar Sales Purchases **Inventory** Manufacturing Repairs Accounting Employees Attendances Leaves Maintenance Website Live Chat More - Administrator

gramasurya Inventory Search

Filters Group By Favorites 1-11 / 11

<b>Receipts</b> My Company More > 2 To Receive Late 2	<b>Internal Transfers</b> My Company More > 4 Transfers Waiting Late 1 5	<b>Delivery Orders</b> My Company More > 7 To Do Waiting Late 6 13
<b>Manufacturing</b> My Company More > 10 To Do Waiting Late 10 7	<b>Internal Transfers</b> Gudang Kertas More > 0 Transfers	<b>Delivery Orders</b> Gudang Kertas More > 0 To Do
<b>Manufacturing</b> Gudang Kertas More > 0 To Do	<b>Receipts</b> Gudang Barang More > 0 To Receive	<b>Internal Transfers</b> Gudang Barang More > 0 Transfers

Dashboard  
Operations  
All Transfers  
Inventory Control  
Products  
Product Variants  
Reordering Rules  
Inventory Adjustments  
Scrap  
Schedulers  
Run Schedulers  
Reports  
Inventory Valuation  
Stock Moves  
Procurement Exceptions 3  
Configuration  
Settings  
Warehouse Management  
Routes  
Products  
Units of Measure  
Powered by Odoo

Receipts My Company	More ▾	Internal Transfers My Company	More ▾	Delivery Orders My Company	More ▾	
2 To Receive	Late	2	4 Transfers	Waiting Late	1 5	
				7 To Do	Waiting Late	6 13

b. Sub Menu All Transfers

Sub Menu All Transfers ini dapat ditemukan pada bagian menu Operations. Cukup mengklik pada bagian sub menu All Transfers maka akan muncul semua daftar yang pernah diorder beserta tanggal dan statusnya.

Discuss Calendar Sales Purchases **Inventory** Manufacturing Repairs Accounting Employees Attendances Leaves Maintenance Website Live Chat More ▾ Administrator ▾

gramasurya

Stock Operations

Create Import

Search...

Filters Group By Favorites 1-58 / 58

Reference	Destination Location Zone	Partner	Scheduled Date	Source Document	Back Order of	Status
WH/INT/00007	GB/Stock		11/10/2017 17:30:07	PO00020		Waiting Another Operation
WH/IN/00020	WH/Stock	PT Jaya Bangun	11/10/2017 17:30:07	PO00020		Available
WH/INT/00006	GK/Stock		11/10/2017 17:25:29	PO00019		Available
WH/IN/00019	WH/Stock	PT Maju Saja	11/10/2017 17:25:29	PO00019		Done
WH/OUT/00032	Partner Locations/Customers	Andri Bayu Suryatno	09/13/2017 14:56:01	SO036		Cancelled
WH/INT/00005	GK/Stock		09/11/2017 11:08:18	PO00018		Available
WH/IN/00018	WH/Stock	PT Maju Saja	09/11/2017 11:08:18	PO00018		Done
WH/IN/00017	WH/Stock	PT Jaya Bangun	09/11/2017 10:37:42	PO00017		Done
WH/INT/00004	GK/Stock		09/11/2017 10:37:42	PO00017		Done

Reference	Destination Location Zone	Partner	Scheduled Date	Source Document	Back Order	Status
WH/INT/00007	GB/Stock		11/10/2017 17:30:07	PO00020		Waiting Another Operation
WH/IN/00020	WH/Stock	PT Jaya Bangun	11/10/2017 17:30:07	PO00020		Available
WH/INT/00006	GK/Stock		11/10/2017 17:25:29	PO00019		Available
WH/IN/00019	WH/Stock	PT Maju Saja	11/10/2017 17:25:29	PO00019		Done