

# Lampiran



Gbr 1. Ekstrak buah Asam Jawa



Gbr 2. spiritus



gbr 3. Akuades



gbr 4. Vortex



Gbr 5. Pipet ukur 1 ml



Gbr 6. Glove dan masker



Gbr 7. BHI cair



Gbr 8. autoclaf



Gbr 9. Timbangan



Gbr 10. anaerobic jar



Gbr 11. Ose steril



Gbr 12. Proses penelitian



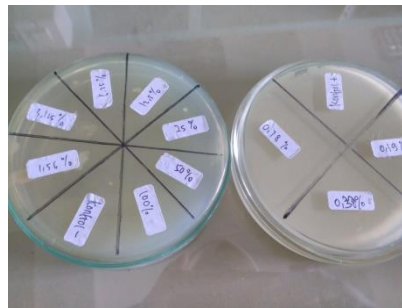
Gbr 13. Aquades 1 ml



Gbr 14. sebelum inkubasi



Gbr 16. Hasil dilusi cair



Gbr 17. Hasil dilusi padat